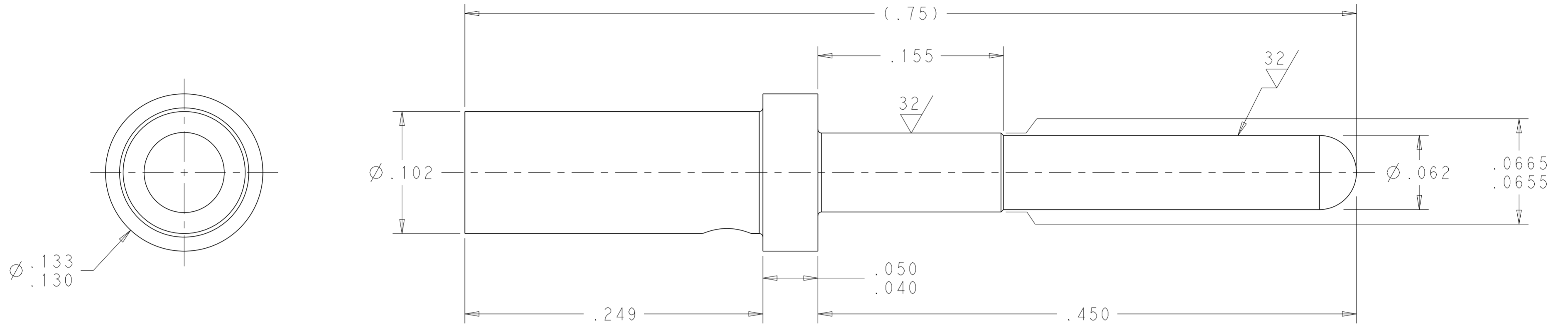


THIS DRAWING IS UNPUBLISHED. RELEASED FOR PUBLICATION 20
 © COPYRIGHT 20 BY - ALL RIGHTS RESERVED.

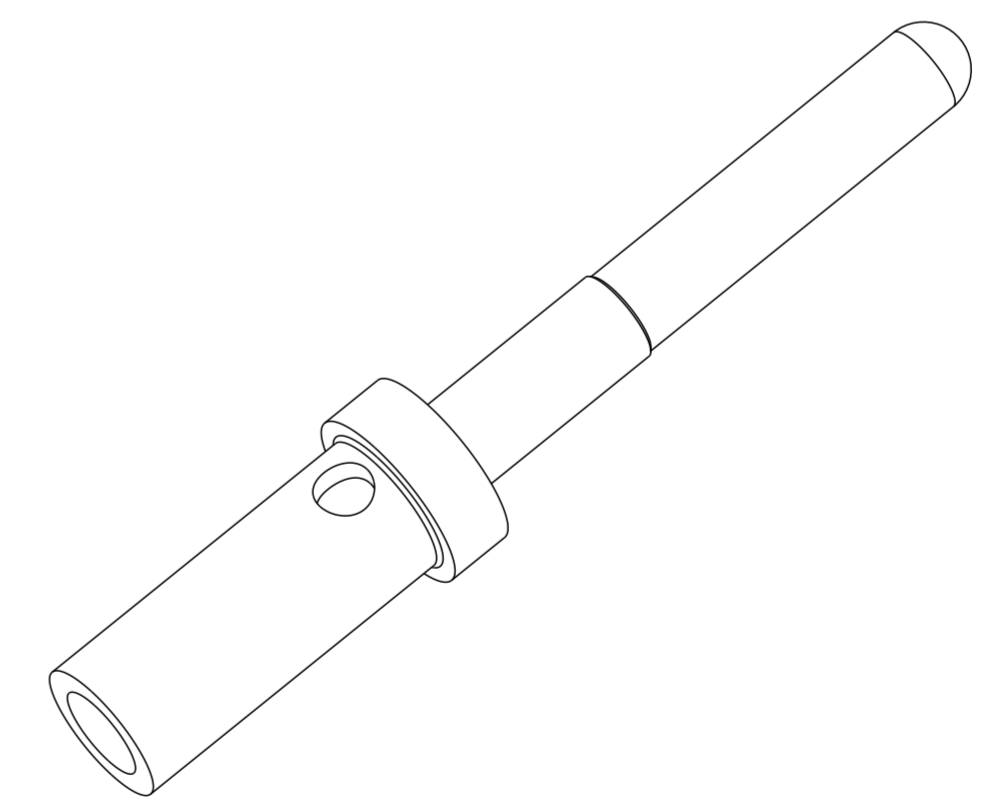
LOC	DIST	REVISIONS			
P	LTR	DESCRIPTION	DATE	DWN	APVD
-	-	B	REVISD PER ECO-13-005777	04APR2013	KH DO



- PART NUMBER CHANGES AND OR DESIGN CHANGES AFFECTING THE INTERCHANGEABILITY REQUIRE PRIOR TE APPROVAL AND AUTHORIZATION BY REVISION TO THIS DRAWING.
- MATERIAL: COPPER ALLOY
- FINISH: SILVER PLATE .000200 MIN THK. OVER NICKEL .000050 MIN. THK.
- ITEMS PROVIDED TO THIS SPECIFICATION TO BE PERMANENTLY IDENTIFIED ON THE CONTAINER WITH THE FOLLOWING IDENTIFIER:

TE PART NO.
 XXXXXXXX-X

YEAR WEEK
 DATE CODE (e.g. 0216)
 XXXX



SCALE 8:1

2212101-1
 PART NUMBER

THIS DRAWING IS A CONTROLLED DOCUMENT.		DWN S. WELDON 03JAN2013	TE Connectivity	
DIMENSIONS: INCHES		CHK D. ORRIS 03JAN2013		
TOLERANCES UNLESS OTHERWISE SPECIFIED:		APVD D. ORRIS 26OCT2012	NAME PIN CONTACT, SIZE 16, CRIMP REMOVABLE, .430 FRONT EXT, SPECIAL	
0 PLC ±- 1 PLC ±- 2 PLC ±.02 3 PLC ±.010 4 PLC ±- ANGLES ±3° FINISH		PRODUCT SPEC -	SIZE A200779	DRAWING NO C-2212101
MATERIAL -		APPLICATION SPEC -	RESTRICTED TO -	SCALE 15:1
		WEIGHT -	SHEET 1 OF 1	REV B
		Customer Drawing		