

- SEALED VERSION / gedichtete Version -

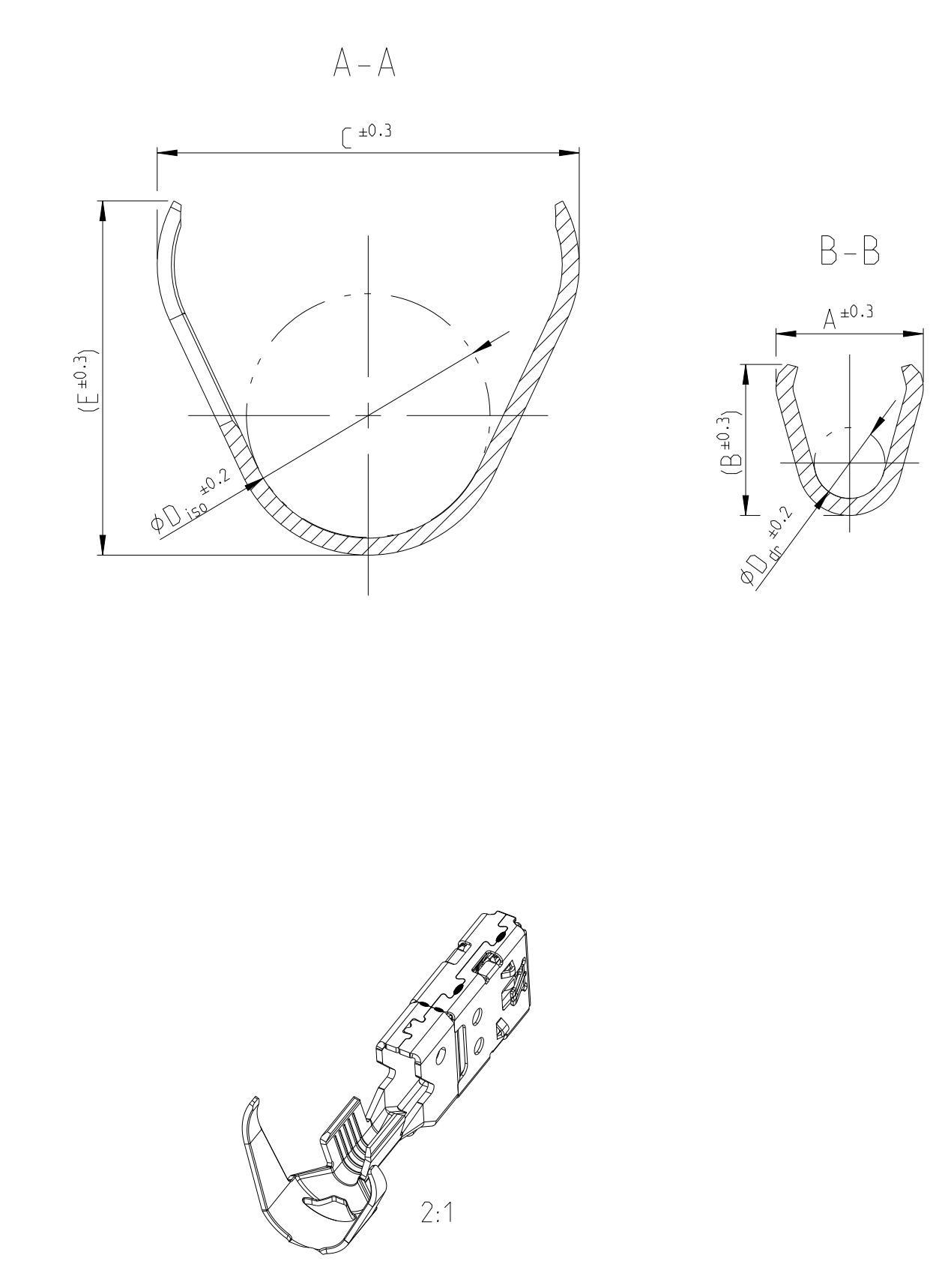
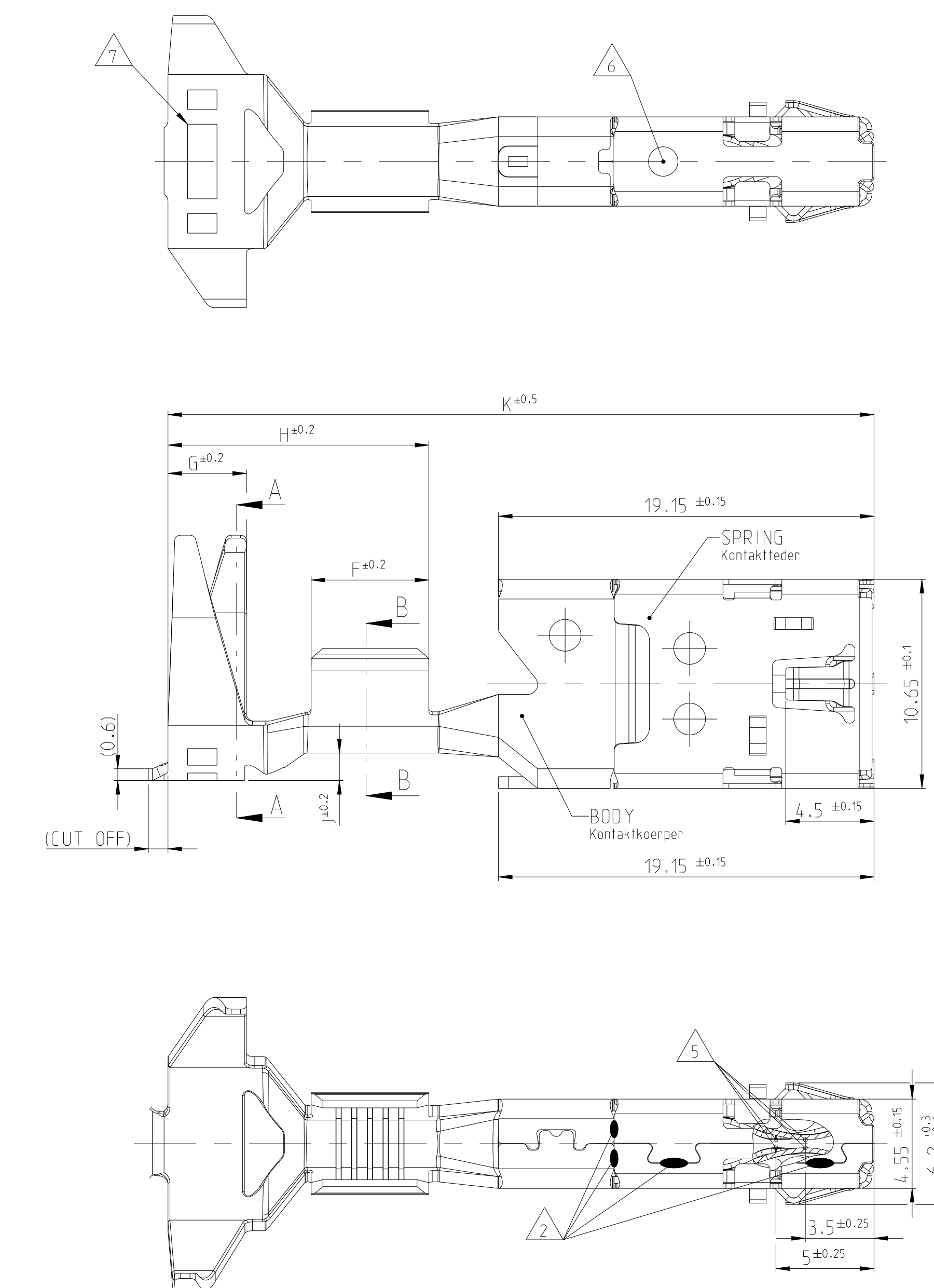
THE DRAWING SHOWS THE 2-DIMENSIONAL REFERENCE COMPONENT CONDITION OF THE ASSEMBLY TO IDENTIFY AND SPECIFY THE NECESSARY DIMENSIONS ONLY. THE DELIVERED PARTS MAY DEVIATE FROM THE DRAWING REGARDING THE ORIENTATION AND POSITION OF EACH COMPONENT (e.g. SLACK LABEL), SO FAR THE FUNCTIONALITY IS NOT COMPROMISED.

DIE ZEICHNUNG ZEIGT DEN 2-DIMENSIONALEN IDEALZUSTAND DES ZUSAMMENBAUTEILS BEZÜGLICH DER KOMPONENTEN ZUR IDENTIFIKATION UND SPEZIFIKATION DER NOTWENDIGEN DIMENSIONEN. HINSEITLICH DER ORIENTIERUNG UND DER LAGE DER KOMPONENTEN (z.B. BEFESTIGUNGS- KABELKODIEREN) DIE DELIVERTEN TEILE VON DER ZEICHNUNG ABWEICHEN, SOFERN DIE FUNKTIONALITÄT NICHT BEEINTRÄCHTIGT IST.

REVISIONS			
NO.	DATE	DESCRIPTION	BY
C2	08FEB2023	SEE ECR-23-165755	EH
C3	29MAR2023	SEE ECR-23-169971	EH
C4	24MAY2023	SEE ECR-23-175284	SEK
C5	20MAR2024	PCN-24-203851	SDT

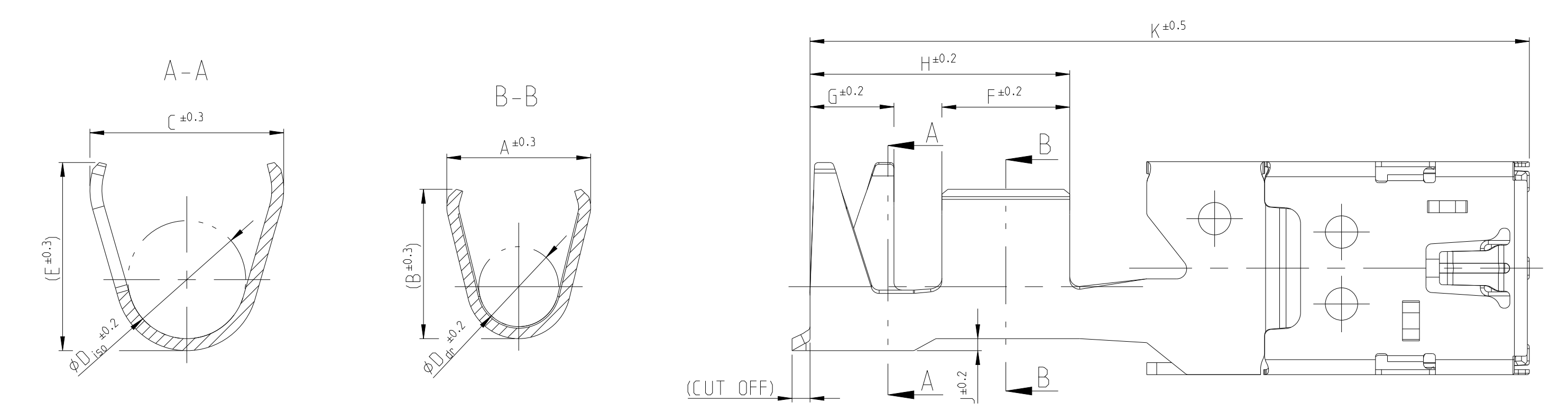
- NOTES**
Bemerkungen
- TO BE USED WITH TAB 8x0.8/1.2mm OR 9.5x0.8/1.2mm ACC. INTERFACE DRAWING 114-94201 REV. A2 OR NEWER
Geignet fuer Flachstecker 8x0.8/1.2mm oder 9.5x0.8/1.2mm nach Auslieferungschrift 114-94201 Rev. A2 oder neuer
 - LASER WELDED
Lasergeschweisst
 - CONTACT BODY PRE TIN SnAg 2 TO 4 µm
Kontaktkoerper verzinkt SnAg 2 bis 4 µm
 - CODING 1 AS SHOWN
Kodierung 1 dargestellt
 - CONTACT AREA GALVANIC PLATED SILVER 2 TO 5µm
Kontaktbereich galvanisch versilbert 2 bis 5µm
 - STAMPED INDICATOR FOR SURFACE IN CONTACT AREA:
- AG: SILVER PLATING
Markierung fuer Oberflaeche im Kontaktbereich
- AG: versilbert
 - REVISION STATUS
Aenderungsstand
 - 114-94285 AND 108-94421 NOT FOR NEW APPLICATIONS.
114-94285 und 108-94421 nicht fuer Neuanwendungen.

PN 2208765

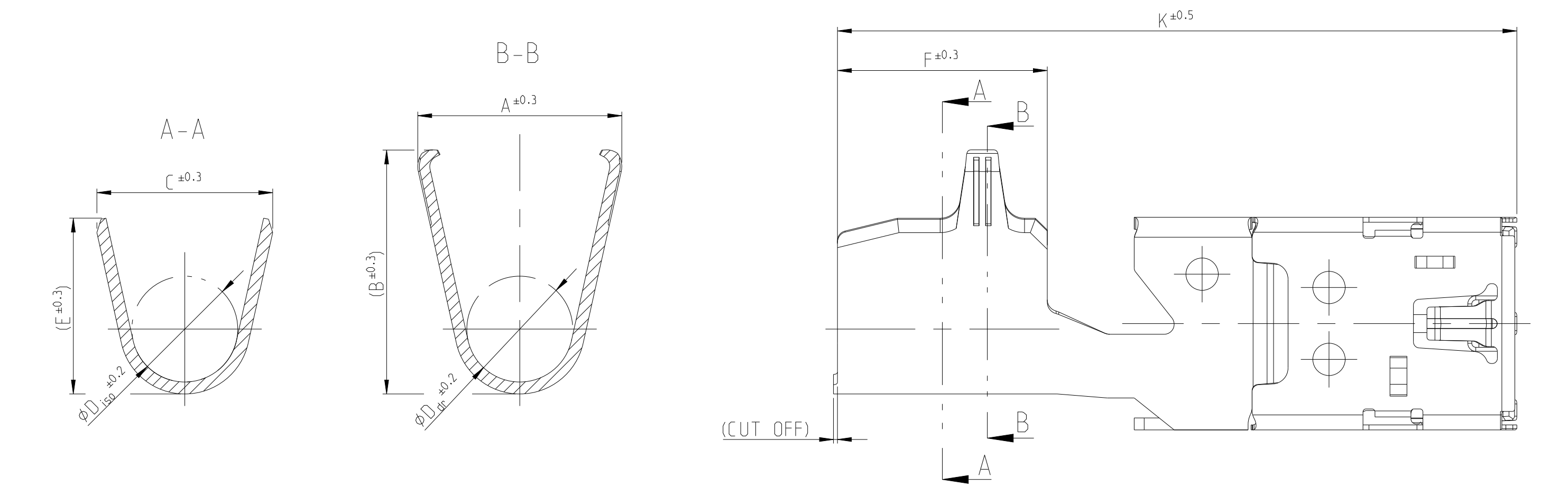


- STANDARD CRIMP VERSION / ungedichtete Version -

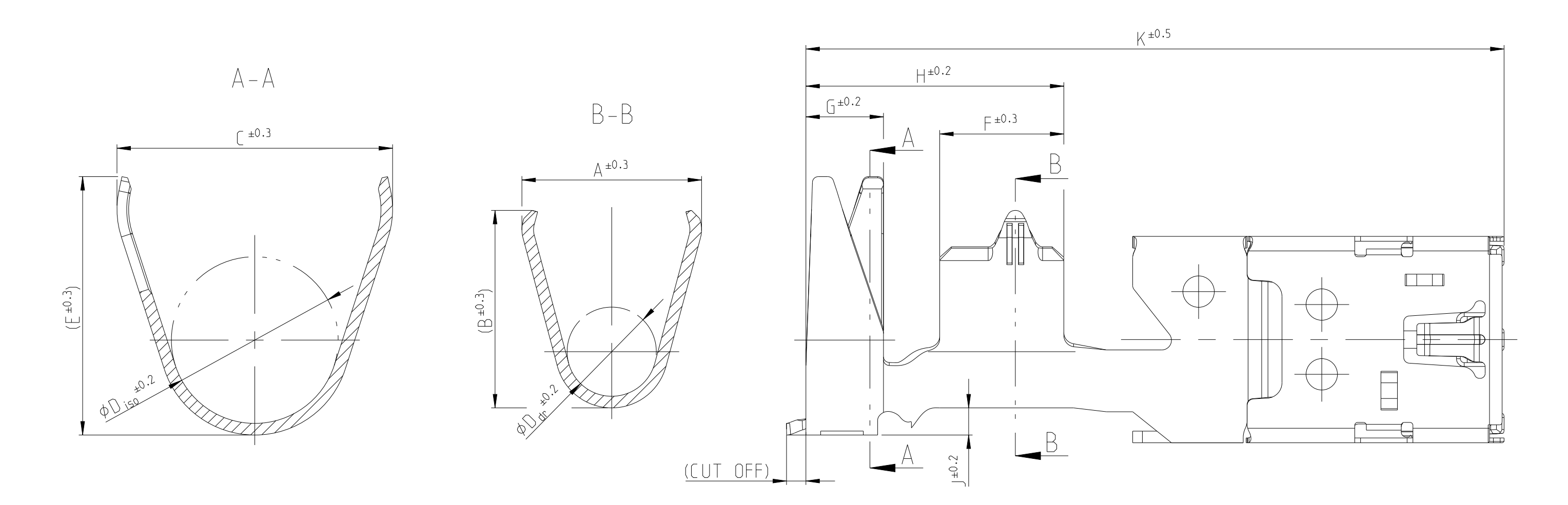
PN 2208762 AND PN 2208763



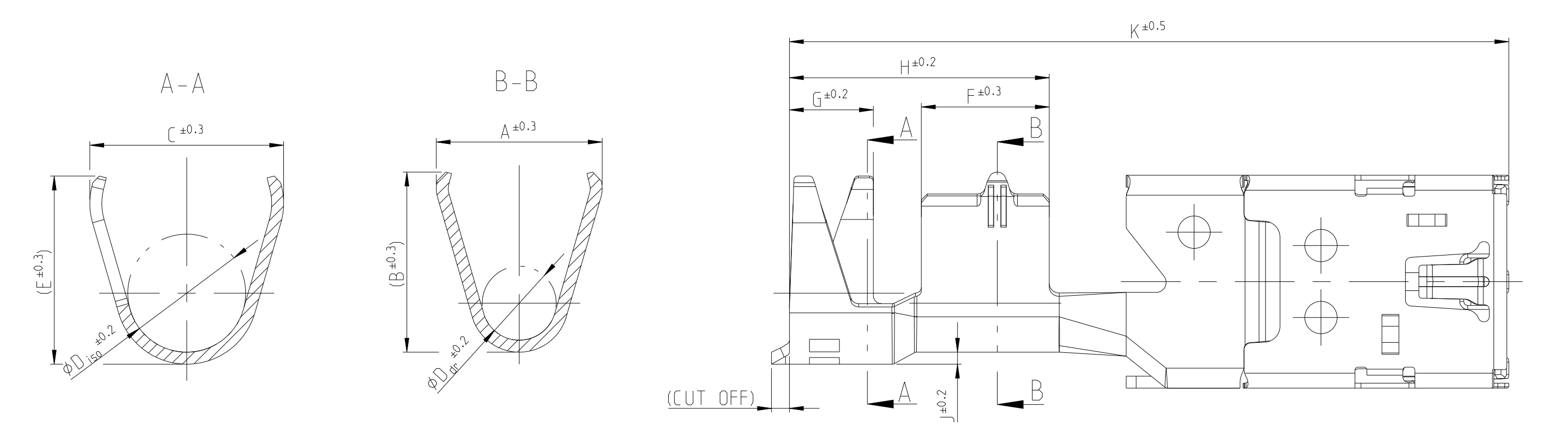
PN 2208764



PN 2208766 AND PN 2299675



PN 2411085



CODING / Kodierungen

VERSION / Auslieferung	REV.	CODING 1	REV.	CODING 2	REV.	CODING 5	REV.	BODY Kontaktkoerper	SPRING Kontaktfeder	BODY Kontaktkoerper	SPRING Kontaktfeder	WIRE RANGE Draht-groessenbereich (mm ²)	WIRE RANGE Draht-groessenbereich (mm ²)	SEALED: Dichtungsbund-φ IN mm	STANDARD CRIMP: WIRE INSULATION φ IN mm	A	B	D _{gr}	C	E	D _{iso}	F	G	H	J	K
SEALED	1-2299675-3	B	2-2299675-1	-	5-2299675-1	-	C14415/C14410	C18080	3	5	6	-	10-12	SEAL COLLAR DIA. φ8.75 OR φ10.0	9.3	10.2	4.6	14.2	13.3	8.6	6.4	4	13.3	1.4	36	
	1-2208766-3	C	2-2208766-1	-	5-2208766-1	-	C14415/C14410	C18080	3	5	6	-	4-6	SEAL COLLAR DIA. φ8.75 OR φ10.0	8.3	9	3.7	14.9	13	8.6	6.4	4	13.3	1.4	36	
	1-2208765-3	B	2-2208765-1	-	5-2208765-1	-	C14415/C14410	C18080	3	5	6	-	2.5	SEAL COLLAR DIA. φ8.75 OR φ10.0	5.2	5.3	2.5	14.9	13.2	8.6	6	4	13.3	1.4	36	
STANDARD CRIMP	1-2208764-3	B	2-2208764-1	-	5-2208764-3	B	C14415/C14410	C18080	3	5	6	12-16	10-16	φ8.3 max.	10.2	12.2	5.3	-	-	-	10.5	-	-	-	34	
	1-2411085-3	A	2-2411085-1	-	5-2411085-3	-	C14415/C14410	C18080	3	5	6	-	6	φ4.0-6.5	8.3	9	3.7	9.7	9.4	5.9	6.4	4.2	13	0.6	36	
	1-2208763-3	-	2-2208763-1	-	5-2208763-3	B	C14415/C14410	C18080	3	5	6	6-10	-	φ4.0-6.5	7.2	7.5	4	9.7	9.4	5.9	6.4	4.2	13	0.6	36	
	1-2208762-3	B	2-2208762-1	-	5-2208762-3	B	C14415/C14410	C18080	3	5	6	2.5-4	2.5-4	φ2.7-3.7	5.2	5.3	2.5	6.4	6.1	3.6	6	3.8	12.7	0.4	36	

THIS DRAWING IS A CONTROLLED DOCUMENT. DIMENSIONING AND TOLERANCING PER GPS ISO STANDARDS.

DATE: 19MAY2014
REV: 12AUG2014

TE Connectivity

Produktgruppenzeichnung
PRODUCT GROUP DRAWING
MCON 8 CONTACT

DATE: 00779
DRAWING NO: 2208761

CUSTOMER DRAWING