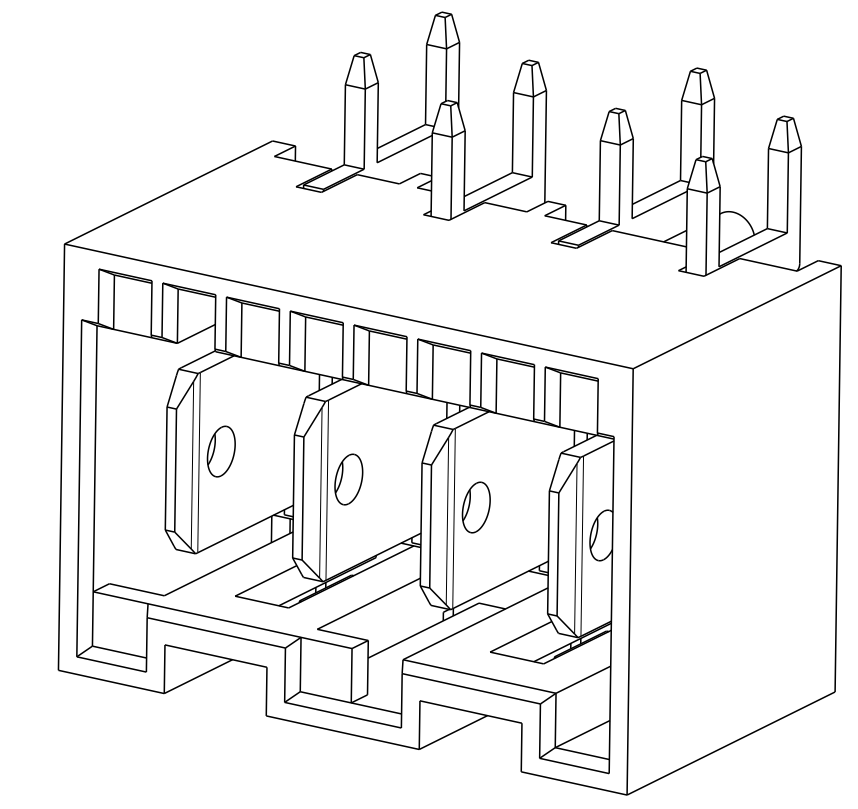
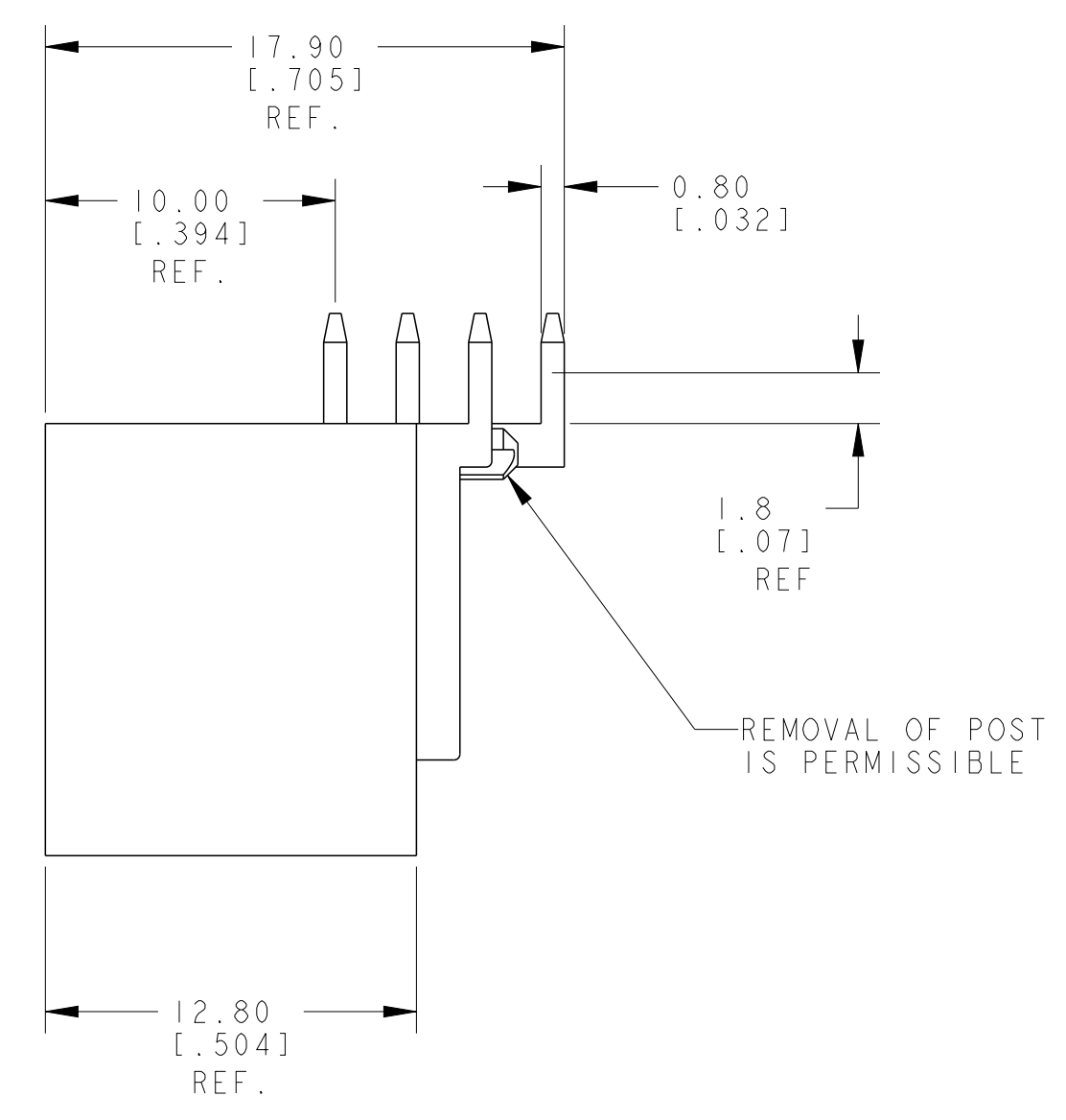
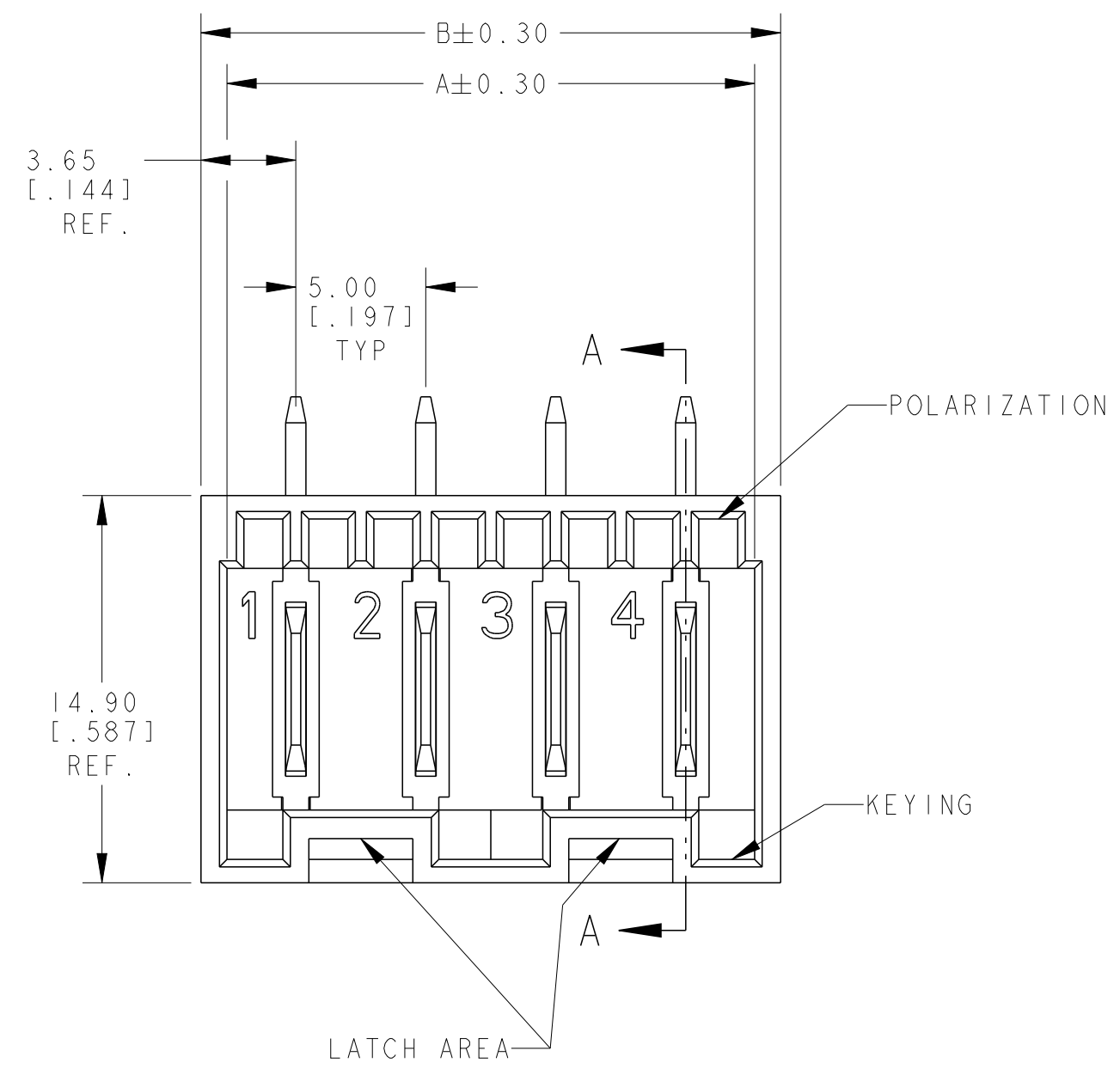
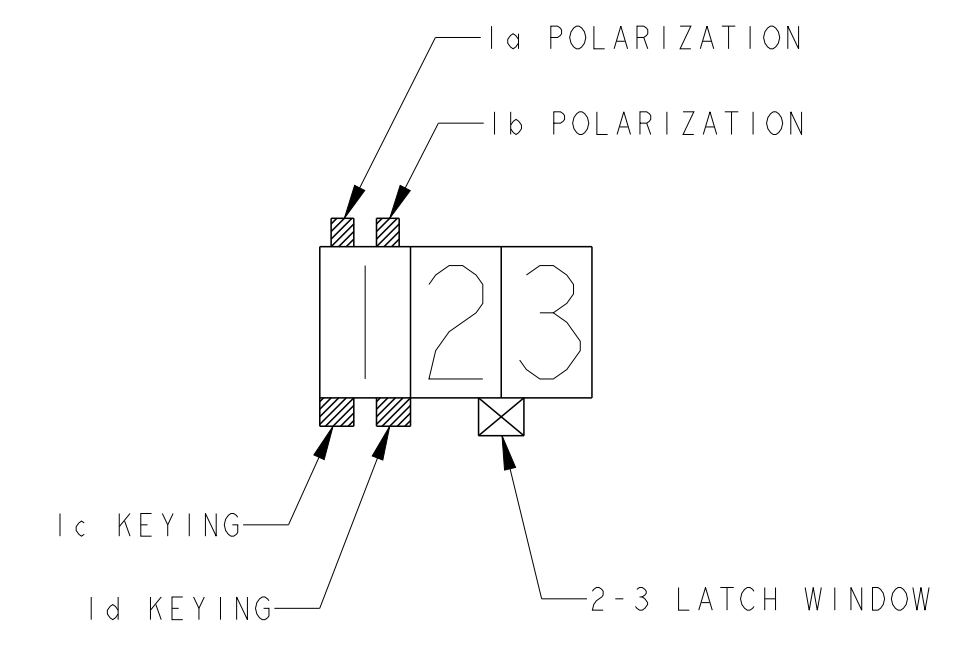
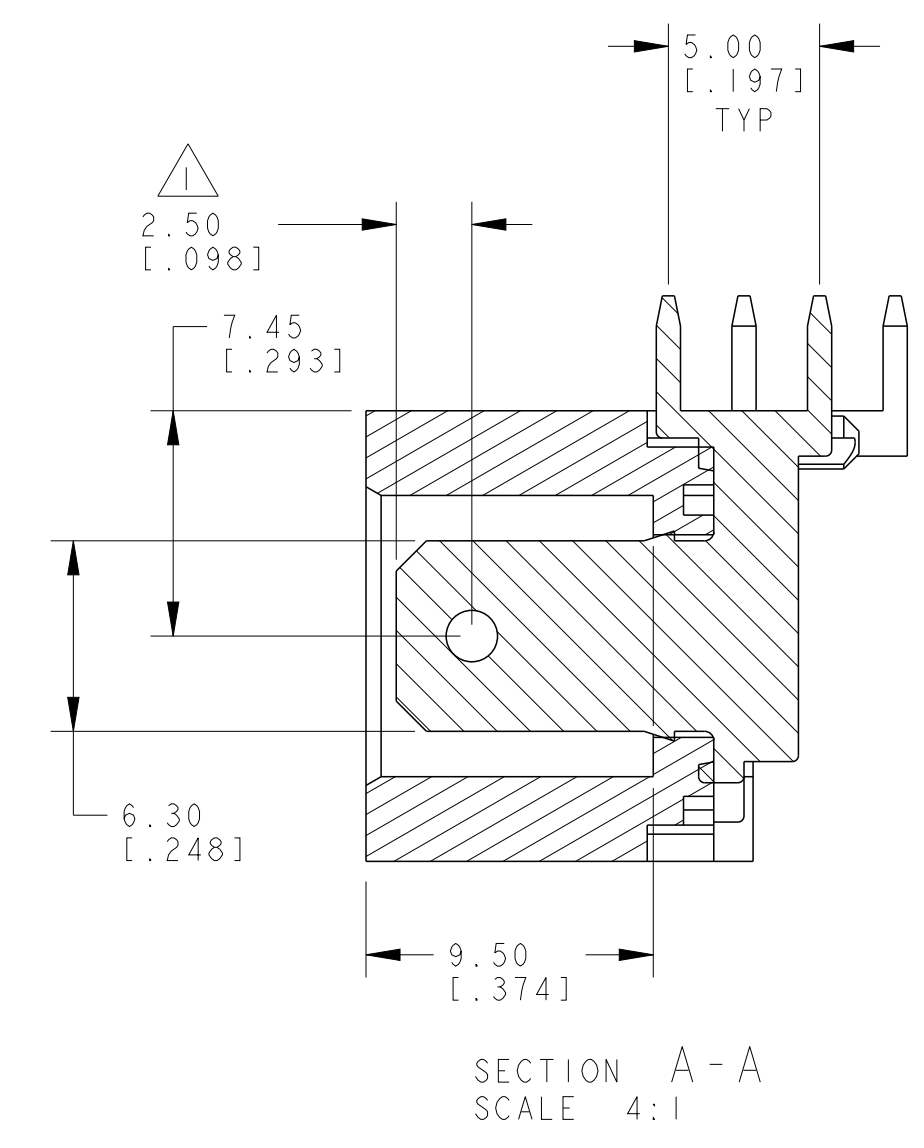
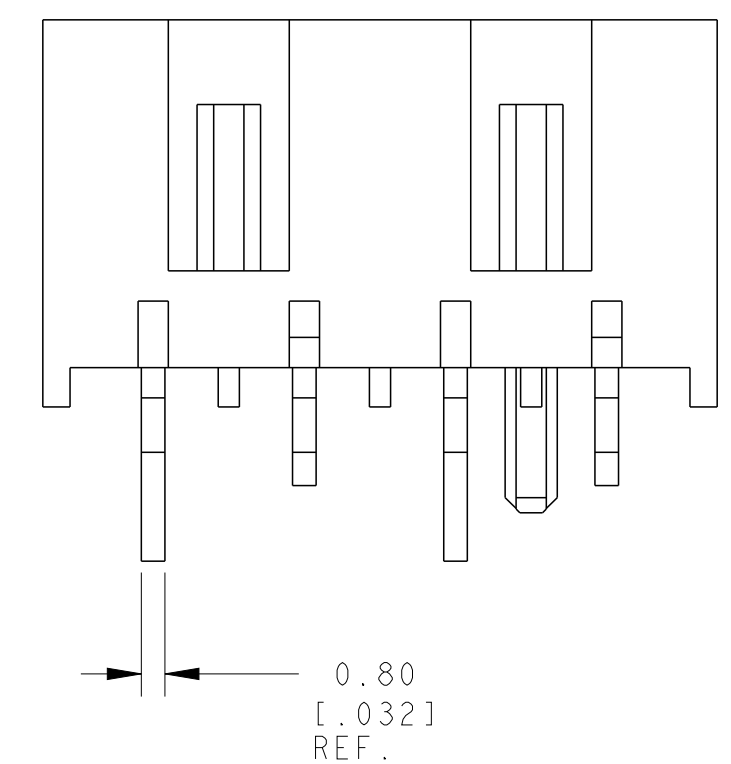


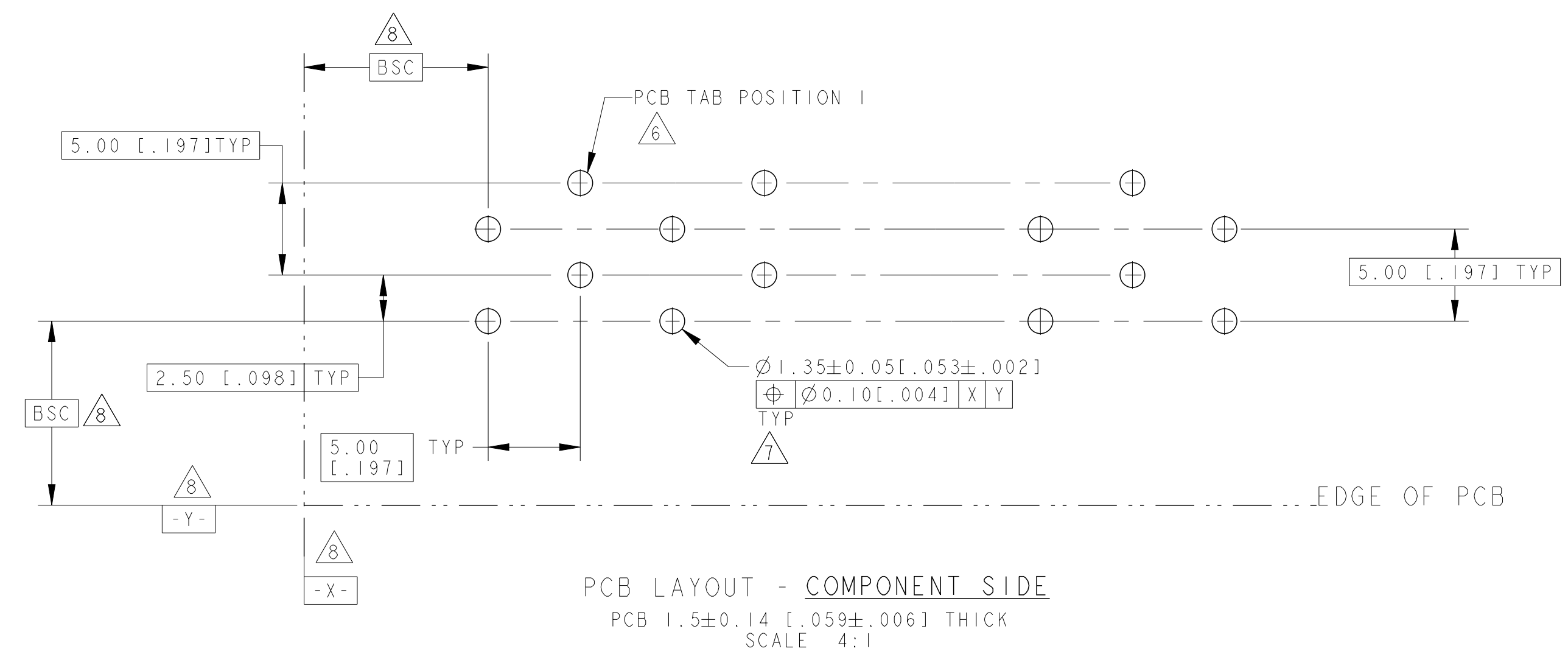
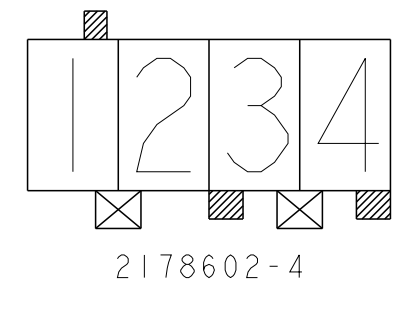
LOC	DIST	REVISIONS			
P	LTN	DESCRIPTION	DATE	OWN	APVD
1		PRELIMINARY RELEASE	30MAY2013	SS	RRP
2		CHANGES PER CUSTOMER REQUEST	18OCT2013	SS	RRP
3		CONTACT ORIENTATION CHANGED	25JUN2014	SS	RR



- △ HOUSING HAS RAST 5 COMPLIANT KEYING, LATCHING, AND POLARIZATION. TAB IS 6.3 x 0.8 [.250 x .032], HOWEVER, THE LOCATION OF THE TAB HOLE DOES NOT MEET DIN 46244.
- 2. POSSIBLE TE CONNECTIVITY MATING CONNECTOR FAMILIES INCLUDE POSITIVE-LOCK RAST 5, STANDARD TIMER RAST 5, MULTIFITTING, MULTIFITTING MKII, AND MONO-SHAPE TAB CONNECTORS.
- 3. SEE SHEET 2 FOR AVAILABLE CONFIGURATIONS .
- △ MATERIAL: HOUSING, NYLON 66, UL 94V-0 GWT. CONTACT, BRASS, 0.8 mm THICK.
- △ FINISH: CONTACTS, 2 μm MIN Silver OVER 1.3 μm MIN NICKEL Lubricated.
- △ PCB TABS INSERTED IN A STAGGERED PATTERN BEGINNING WITH POSITION 1.
- △ SELECTED HOLES MAY BE 1.05+0.05/-0.00 DIA [.041+.002/-0.001 DIA] FOR IMPROVED (PRESS-FIT) RETENTION TO P.C.B. PRIOR TO SOLDERING.
- △ DATUM AND BASIC DIMENSION ESTABLISHED BY CUSTOMER.
- 9. PRODUCT QUALIFICATION PER 108-2183
- △ PRELIMINARY - NOT FOR PRODUCTION



PICTORIAL VIEW KEY



PCB LAYOUT - COMPONENT SIDE
 PCB 1.5±0.14 [.059±.006] THICK
 SCALE 4:1

47.3	45.3	9
42.3	40.3	8
37.3	35.3	7
32.3	30.3	6
27.3	25.3	5
22.3	20.3	4
17.3	15.3	3
12.3	10.3	2
B	A	NO. OF POS.

1-2,3-4	3c,4d	1b	4	04-A	2178602-4
LATCH WINDOWS	KEYING	POLAR.	NO. OF POS.	RAST 5 DESIG.	PART NUMBER

THIS DRAWING IS A CONTROLLED DOCUMENT.

OWN: R. FLAIG 02MAR2004
 CHK: J. HUMMEL 02MAR2004
 APVD: J. HUMMEL 02MAR2004

DIMENSIONS: mm [INCHES]
 TOLERANCES UNLESS OTHERWISE SPECIFIED:
 0 PLC ±
 1 PLC ±0.25(.010)
 2 PLC ±
 3 PLC ±
 4 PLC ±
 ANGLES ±2°

FINISH: △ 5

NAME: ASSEMBLY, POSITIVE-LOCK, RAST 5, HEADER, RIGHT ANGLE
 PRODUCT SPEC: 108-2183
 APPLICATION SPEC: -

SIZE: A1
 CAGE CODE: 100779
 DRAWING NO: 2178602
 RESTRICTED TO: -

SCALE: 4:1
 SHEET: 1 OF 1
 REV: 3