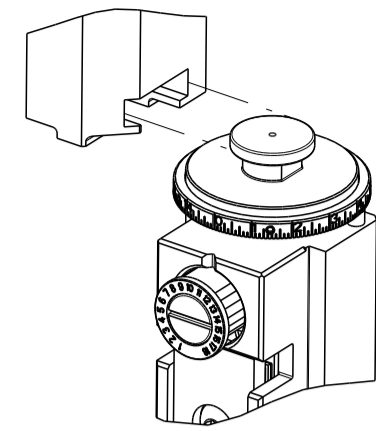


PART NUMBER	REVISION	DESCRIPTION	FEED TYPE
2151443-2	J	FINE CRIMP HEIGHT ADJUST	PNEUMATIC
5-2151443-2	J	SEAL STRIPPER CRIMPER TERMINATING UNIT	PNEUMATIC
7-2151443-7	J	CRIMP TOOLING KIT	-

ATLANTIC VERSION TERMINATOR INTERFACE ADAPTER



REVISIONS					
P	LTN	DESCRIPTION	DATE	OWN	APVD
G		ECR-19-2151443	25JUN2019	JAH	TE
H		ECR-19-017381	08NOV2019	TB	TE
J		ECR-20-011293	10AUG2020	JWC	GB
J1		ECR-24-211601	12JUN2024	ZZ	GB

APPLICATOR DATA		
CRIMP	SIZE	TYPE
WIRE	0.80 mm [.031]	F
INSUL	0.85 mm [.033]	F

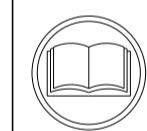
APPLICATOR INSTRUCTIONS
408-35042

TERMINAL DATA: MOLEX TERMINAL		MOLEX CRIMP SPECIFICATION	
TERMINAL NAME: 1.25 WIRE TO BOARD CONN, CRIMP RECEPT.			
WIRE STRIP LENGTH		INSULATION DIAMETER RANGE	
1.40-1.90 mm [.055-.075 IN]		Ø0.51-0.99 mm [.020-.039 IN]	
TERMINAL APPLICATION SPECIFICATION	SPEC 63900-3700 Rev D		
TERMINALS APPLIED			
TE TERMINAL	MOLEX TERMINAL	TE TERMINAL	MOLEX TERMINAL
993820-1	50079-8000		

TERMINAL DATA: MOLEX TERMINAL		MOLEX CRIMP SPECIFICATION	
TERMINAL NAME: 1.25 WIRE TO BOARD CONN, CRIMP RECEPT.			
WIRE STRIP LENGTH		INSULATION DIAMETER RANGE	
1.40-1.90 mm [.055-.075 IN]		Ø0.51-0.99 mm [.020-.039 IN]	
TERMINAL APPLICATION SPECIFICATION	SPEC 63900-3700 Rev D		
TERMINALS APPLIED			
TE TERMINAL	MOLEX TERMINAL	TE TERMINAL	MOLEX TERMINAL
993820-2	50058-8000		

WIRE SIZE	CRIMP HEIGHT mm [INCH]	CRIMP HEIGHT REFERENCE SETTING
26 AWG OR 0.12mm2	0.625+/-0.025 [.024+/- .001]	6.4
28 AWG OR 0.08mm2	0.585+/-0.025 [.023+/- .001]	6.9

WIRE SIZE	CRIMP HEIGHT mm [INCH]	CRIMP HEIGHT REFERENCE SETTING
28 AWG OR 0.08mm2	0.535+/-0.025 [.021+/- .001]	8.1
30 AWG OR 0.05mm2	0.505+/-0.025 [.020+/- .001]	8.4
32 AWG OR 0.03mm2	0.485+/-0.025 [.019+/- .001]	8.7



- 1 RECOMMENDED SPARE PARTS
- 2 REFER TO SUPPLIED INSTRUCTION SHEET FOR CLEANING, LUBRICATION AND STORAGE OF APPLICATOR.
- 3 APPLY PART NUMBER 2-23419-6 LOCTITE TO THREADS OF ITEM 242. APPLY PART NUMBER 1-23419-5 LOCTITE TO THREADS OF ITEM 180.
- 4 CRIMP HEIGHT REFERENCE SETTING WAS THE SETTING USED WHEN THE APPLICATOR WAS QUALIFIED AT THE FACTORY. ADJUSTMENT MAY BE NECESSARY WHEN RUNNING APPLICATOR IN THE FIELD.
- 5. UNLESS SPECIFIED OTHERWISE TORQUE VALUES SHALL BE USED PER DOCUMENT, 101-35000.
- 6 TERMINAL PITCH NOT COMPATIBLE WITH MECHANICAL FEED.
- 7 THIS APPLICATOR DOES NOT CUT CARRIER STRIP.
- 8. ADJUSTMENTS MAY BE REQUIRED WHEN CHANGING TERMINALS.
- 9 TERMINAL LUBRICANT IS RECOMMENDED.

***WARNING**
ON INSTALLATION, SET WIRE DISC TO CRIMP HEIGHT REFERENCE SETTING FOR LARGEST WIRE SIZE. CRIMP HEIGHT REFERENCE SETTINGS GREATER THAN THE VALUE SHOWN MAY CAUSE DAMAGE TO THE CRIMP TOOLING, REFER TO THE INSTRUCTION SHEET FOR PROPER SETUP AND ADJUSTMENTS.

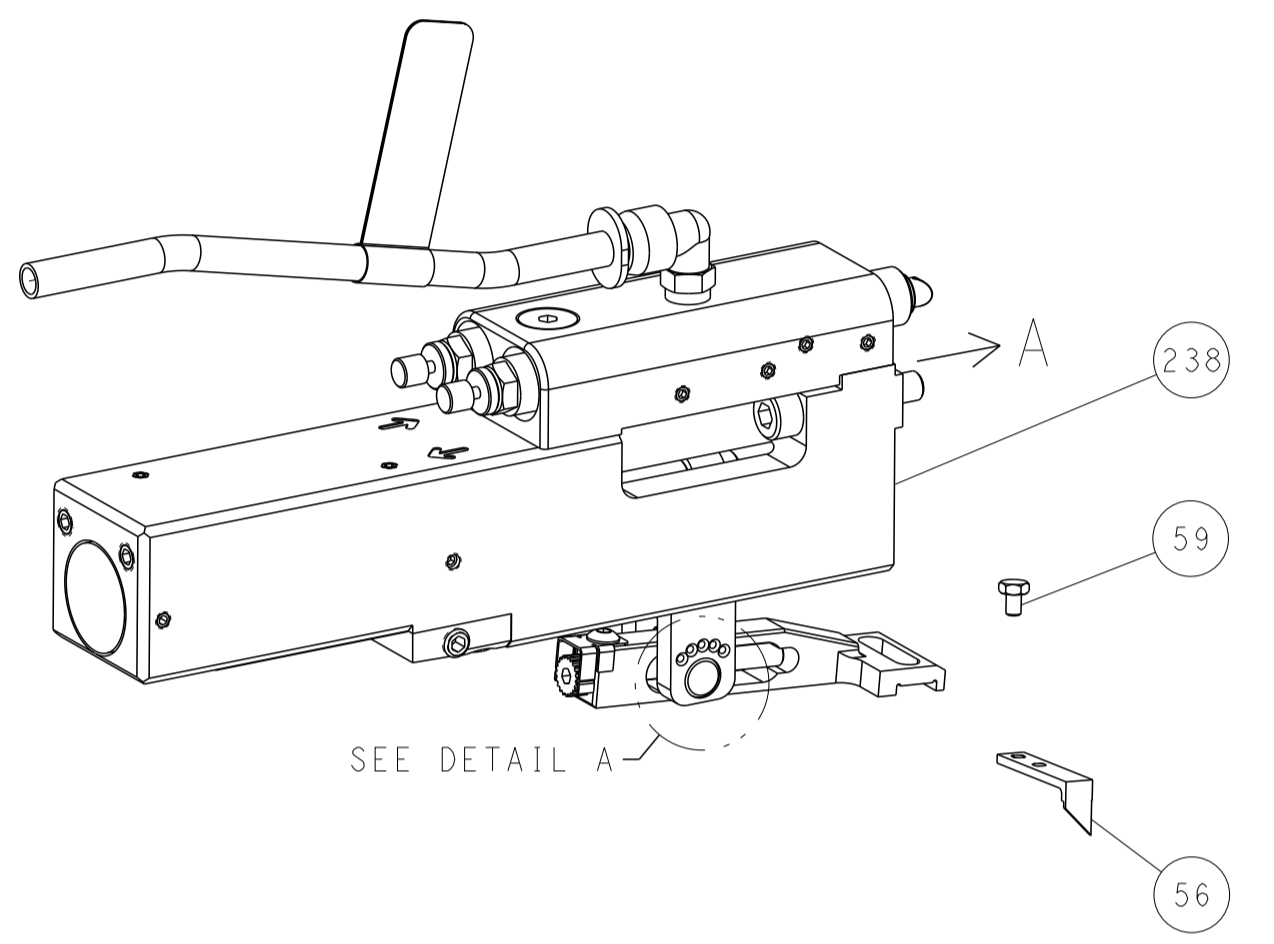
-	1	-	1803515-3	RAM ASSEMBLY, SF ATLANTIC	293
-	1	-	2-1803583-1	APPLICATOR BASIC ASSEMBLY, SF	292
-	2	2	22281-8	SPRING, COMPRESSION	279
-	2	2	2-18032-5	SCR, SET, FLT PNT, M5 X 20.0	278
-	1	1	1-22281-8	SPRING, COMPRESSION	277
-	1	1	2168083-6	SCR, SKT HD CAP, RoHS, M5 X 65	276
-	1	1	980371-4	SCR, SKT HD SHLDR 5.0 DIA X 6.0	275
-	1	1	356835-1	LEVER, DRAG RELEASE	274
-	1	1	240792-1	DRAG, TERMINAL	273
-	2	2	2168083-1	SCR, SKT HD CAP, RoHS, M3 X 8.0	271
-	1	1	1-690438-0	FRONT STRIP GUIDE	270
-	1	1	2119641-1	FEED CAM, AIR FEED	248
-	1	1	2119082-1	CAM, SNAIL, INSULATION ADJUSTMENT	244
-	1	1	2079764-1	WASHER, WAVE SPRING, CREST-TO-CREST	243
-	1	1	2119083-1	RETAINER, INSULATION DIAL	242
-	1	1	2844940-1	AIR FEED MODULE	238
-	1	-	1803237-1	STRIPPER, SIDE FEED	182
-	1	-	1-5018030-0	NUT, HEX, REG, RoHS, M3.5	181
-	1	-	1-1752354-5	STANDOFF, HOLD-DOWN	180
-	1	-	993111-1	PIN, SLOTTED SPRING 3.0 X 20.0	177
-	1	-	5-22280-0	SPRING, COMPRESSION	176
-	1	-	1752353-3	GUIDE PIN, HOLDDOWN	175
-	1	-	1901680-2	GUIDE PIN, HOLDDOWN	174
-	REF	REF	994970-2	COUNTER, MAGNETIC	164
-	1	1	2119955-1	ASSY, LUBRICATOR, SIDE FEED	113
-	1	1	2844908-1	SCREW, LOCKING	99
-	1	1	2844907-1	POST, LOCKING	98
-	1	1	1803607-3	DOCUMENTATION PACKAGE	71
-	1	1	2-2119791-2	DEPRESSOR, WIRE	70
-	1	1	2119740-1	TAG, IDENTIFICATION	67
-	2	2	2168078-1	SCREW, DRIVE, RH, RoHS, 2 x .188	66
-	1	1	2168083-2	SCR, SKT HD CAP, RoHS, M4 X 8.0	60
-	1	1	5-18022-5	SCR, HEX HD CAP, M4 X 6.0	59
-	1	1	1338685-1	PAWL, FEED	56
-	4	4	2168083-3	SCR, SKT HD CAP, RoHS, M4 X 12.0	54
-	1	1	18023-9	SCR, SKT HD CAP M4 X 6.0	49
-	-	1	1803583-9	APPLICATOR BASIC ASSEMBLY, SF	46
-	-	1	1803515-1	RAM ASSEMBLY, SF ATLANTIC	44
-	1	1	1803602-1	SCR, BHSC, RoHS (M8 X 25)	41
-	1	1	2-1752356-6	SUPPORT, TERMINAL	34
-	2	2	2079383-5	SCR, BHSC, RoHS (M4 X 20)	33
-	2	2	2-2844962-3	SPACER, CYLINDRICAL, STRIP GUIDE	30
-	1	1	2-2844938-0	PLATE, STRIP GUIDE	29
-	1	1	1320928-2	STRIP GUIDE	24
-	-	1	2168083-2	SCR, SKT HD CAP, RoHS, M4 X 8.0	21
-	1	2	1-18028-2	WASHER, FLAT, REG M4	20
-	-	1	2119533-3	STRIPPER, SIDE FEED	19
-	1	1	3-22280-3	SPRING, COMPRESSION	12
-	1	1	1-356885-5	STOP, SHEAR	11
-	1	1	2119805-1	SHEAR HOLDER, FRONT	10
-	1	1	1803095-6	FLOATING SHEAR, FRONT	9
-	1	1	4-1633621-5	ANVIL, COMBINATION	8
-	-	-	-	-	7
-	-	-	-	-	6
-	1	1	2-2119757-2	DEPRESSOR, SHEAR	5
-	1	1	2-238011-5	BLOCK, CRIMPER SPACER	4
-	1	1	1803167-5	CRIMPER, INSULATION F SPECIAL	3
-	1	1	455888-1	SPACER, CRIMPER	2
-	1	1	5-1803407-6	CRIMPER, WIRE PREMIUM	1

THIS DRAWING IS A CONTROLLED DOCUMENT.		OWN	DATE	DESCRIPTION		ITEM NO
DIMENSIONS:		CH	25MAY2012	PART NO		
TOLERANCES UNLESS OTHERWISE SPECIFIED:		CHK	25MAY2012	DESCRIPTION		
mm	0 PLC ±	ELBIN	25MAY2012	Ocean Side Feed		
	1 PLC ±			Applicator		
	2 PLC ±					
	3 PLC ±					
	4 PLC ±					
	ANGLES ±					
MATERIAL	FINISH			SIZE CAGE CODE DRAWING NO		RESTRICTED TO
				A 00779 C=2151443		
CUSTOMER ACCESSIBLE PRODUCTION DRAWING		WEIGHT		SCALE 1:2		SHEET 1 OF 4
						REV J1

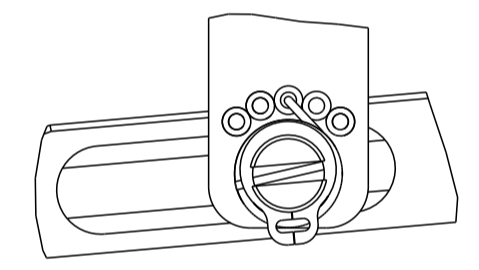
REVISIONS				
P	LTN	DESCRIPTION	DATE	APVD
-	-	SEE SHEET 1	-	-

FEED TYPE

PNEUMATIC

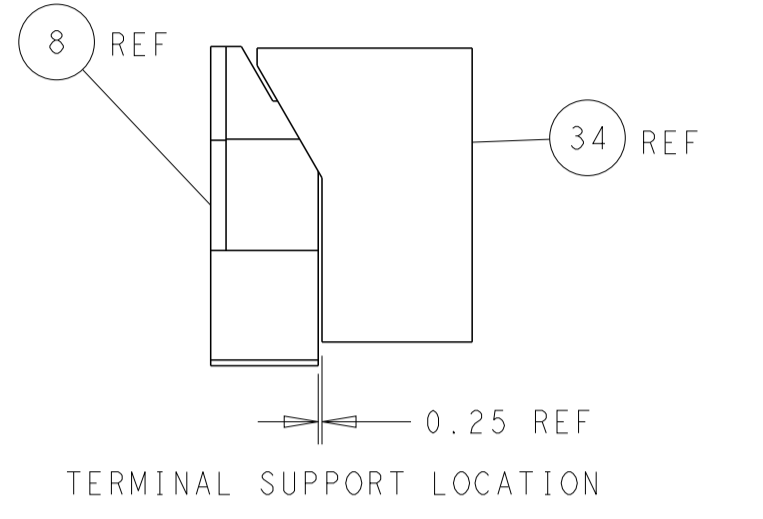
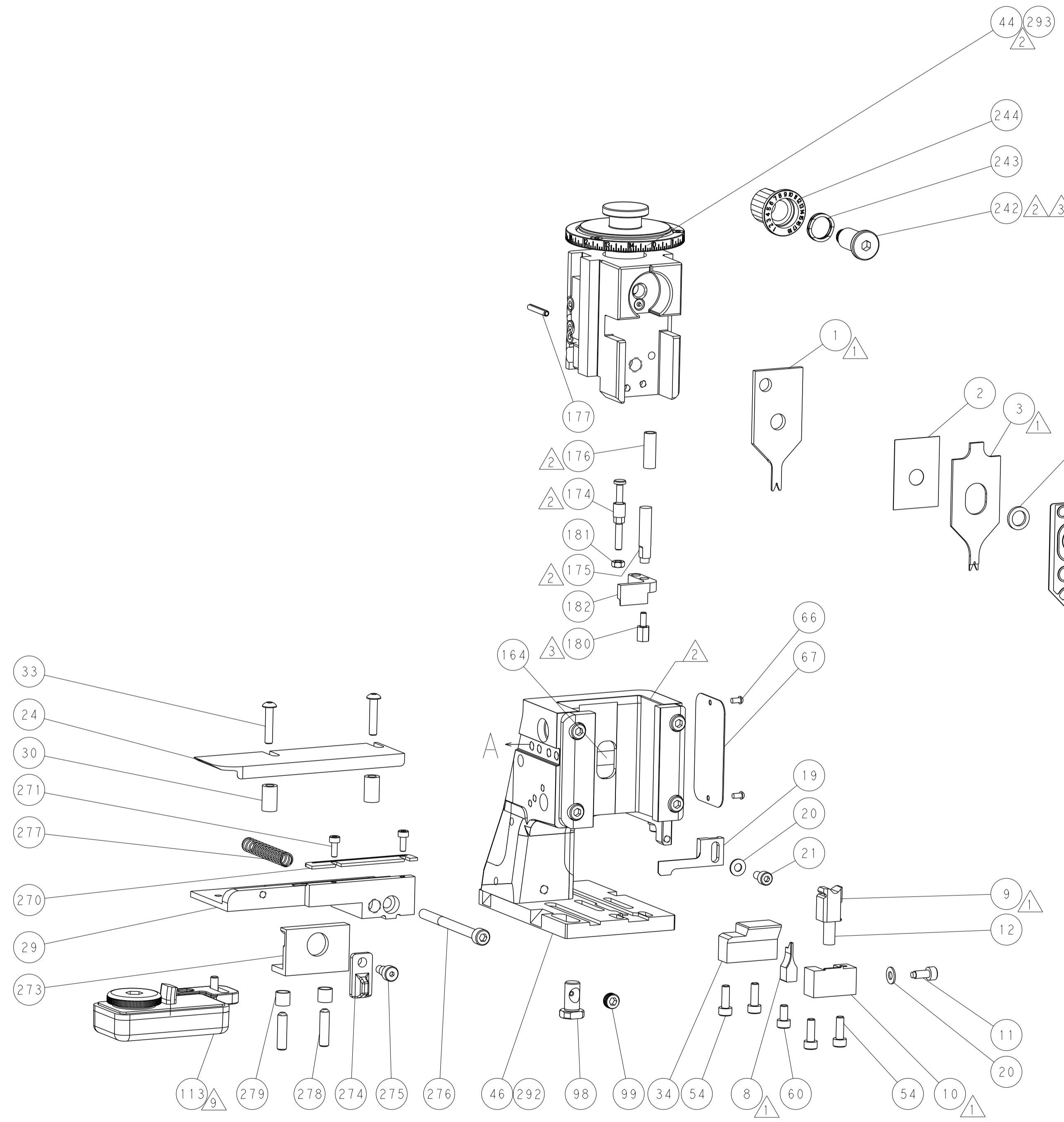
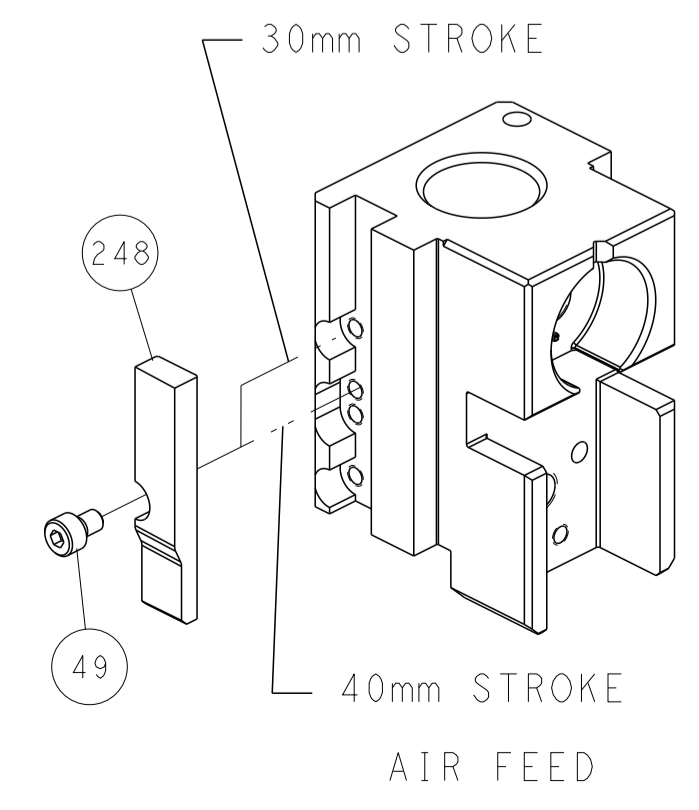


FEED SPRING SETTING POSITION (SHOWN FROM REAR SIDE)

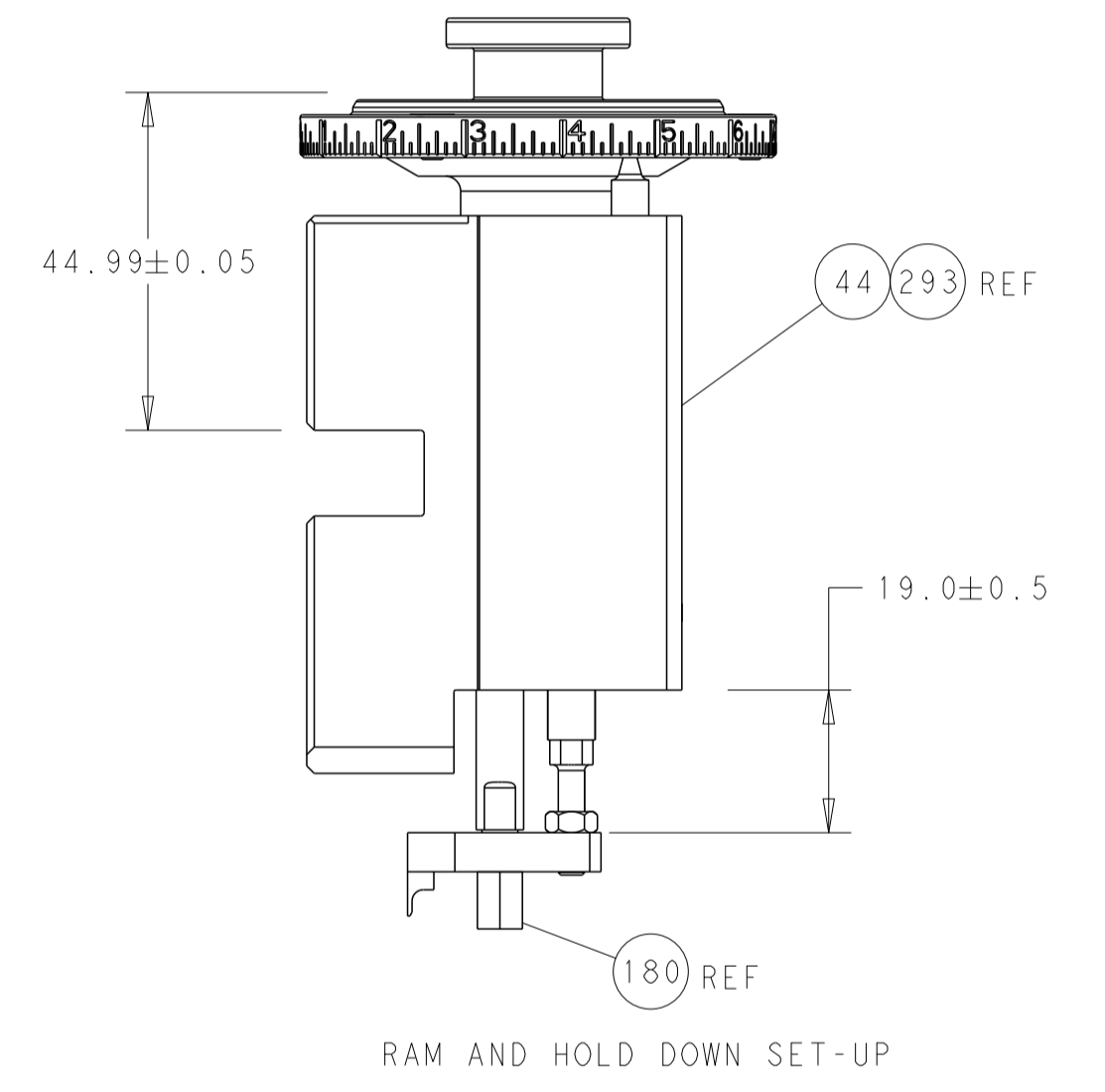


DETAIL A

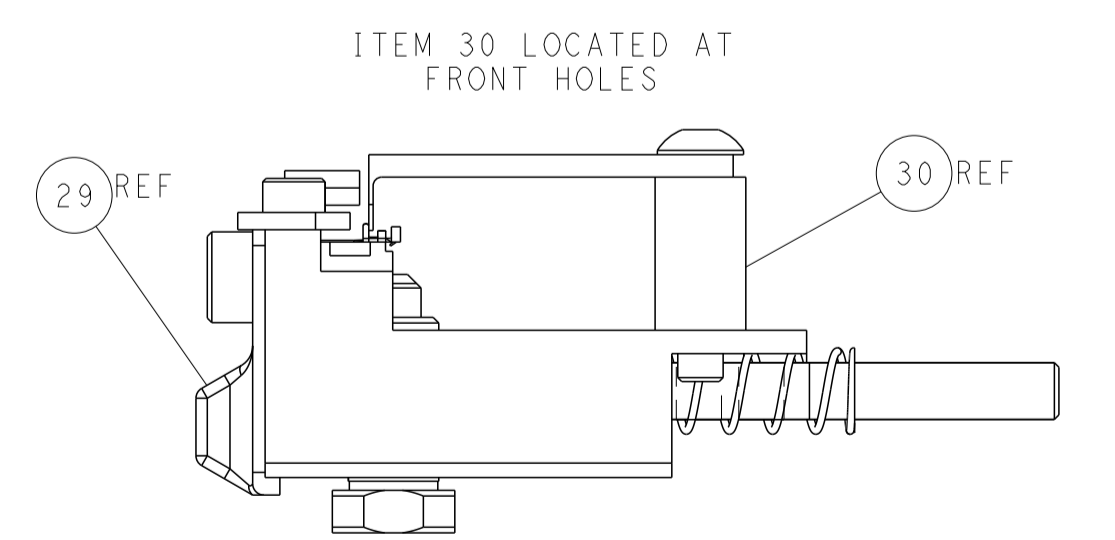
CAM POSITION



TERMINAL SUPPORT LOCATION



RAM AND HOLD DOWN SET-UP



FEED TRACK POSITION GUIDE BY INSULATION BARREL

THIS DRAWING IS A CONTROLLED DOCUMENT.		OWN: X_ZHAO 25MAY2012	
		CHK: T_ELFIN 25MAY2012	
DIMENSIONS:		APVD: S_XI 25MAY2012	NAME: Ocean Side Feed Applicator
mm	TOLERANCES UNLESS OTHERWISE SPECIFIED:	PRODUCT SPEC	
0 PLC	±	APPLICATION SPEC	
1 PLC	±	SIZE	
2 PLC	±	WEIGHT	
3 PLC	±	CUSTOMER ACCESSIBLE PRODUCTION DRAWING	
4 PLC	±	SCALE	1:2
ANGLES	±	SHEET	2 OF 4
FINISH	±	REV	J1