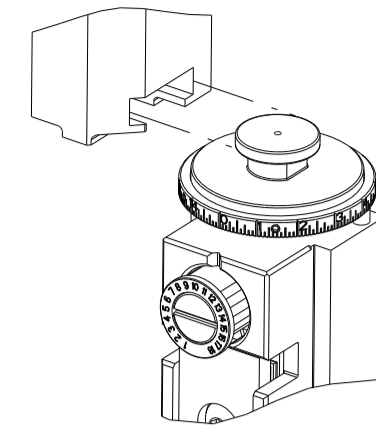


PART NUMBER	REVISION	DESCRIPTION	FEED TYPE
2151437-1	F	FINE CRIMP HEIGHT ADJUST	MECHANICAL
2151437-2	F	FINE CRIMP HEIGHT ADJUST	PNEUMATIC
7-2151437-1	F	MECHANICAL AND CRIMP TOOLING KIT	MECHANICAL
7-2151437-2	F	PNEUMATIC AND CRIMP TOOLING KIT	PNEUMATIC
7-2151437-7	C	CRIMP TOOLING KIT	-

ATLANTIC VERSION TERMINATOR INTERFACE ADAPTER



APPLICATOR DATA		
CRIMP	SIZE	TYPE
WIRE	1.40 mm [.055]	F
INSUL	1.40 mm [.055]	OV

APPLICATOR INSTRUCTIONS
408-35042

TERMINAL DATA: SUMITOMO TERMINAL SUMITOMO CRIMP SPECIFICATION			
TERMINAL NAME: 0.64 UNSEALED TERMINAL, L			
WIRE STRIP LENGTH	INSULATION DIAMETER RANGE		
4.00-4.50 mm [1.57-.177 IN]	Ø 1.78mm MAX [.070 IN MAX]		
TERMINAL APPLICATION SPECIFICATION	(A) COMP06001486 Rev T--272-A		
TERMINALS APPLIED			
TE TERMINAL	SUMITOMO TERMINAL	TE TERMINAL	SUMITOMO TERMINAL
(A) 1832148-1	(A) 8100-3623	(A) 1832152-1	(A) 8100-3625
(A) 2415534-1	(A) 8100-3629		

TERMINAL DATA: SUMITOMO TERMINAL SUMITOMO CRIMP SPECIFICATION			
TERMINAL NAME: 0.64 UNSEALED TERMINAL, M			
WIRE STRIP LENGTH	INSULATION DIAMETER RANGE		
4.00-4.50 mm [1.57-.177 IN]	Ø 1.00-1.40mm [1.039-.055 IN]		
TERMINAL APPLICATION SPECIFICATION	(B) COMP06001486 Rev T--272E-D		
TERMINALS APPLIED			
TE TERMINAL	SUMITOMO TERMINAL	TE TERMINAL	SUMITOMO TERMINAL
(B) 2318384-1	(B) 8100-3624	(B) 1949379-1	(B) 8100-3622
(B) 2318384-2	(B) 8100-3628	(B) 1949379-2	(B) 8100-3626
(B) 2380005-1	(B) 8100-3624		

WIRE SIZE	CRIMP HEIGHT mm [INCH]	CRIMP HEIGHT REFERENCE SETTING
0.50mm2	1.05+/-0.05 [1.041+/-0.002]	8.9
0.30mm2	0.95+/-0.05 [1.037+/-0.002]	9.5

WIRE SIZE	CRIMP HEIGHT mm [INCH]	CRIMP HEIGHT REFERENCE SETTING
0.35mm2	0.90+/-0.05 [1.035+/-0.002]	8.8
0.22mm2	0.80+/-0.05 [1.031+/-0.002]	10.0

***WARNING**
ON INSTALLATION, SET WIRE DISC TO CRIMP HEIGHT REFERENCE SETTING FOR LARGEST WIRE SIZE. CRIMP HEIGHT REFERENCE SETTINGS GREATER THAN THE VALUE SHOWN MAY CAUSE DAMAGE TO THE CRIMP TOOLING. REFER TO THE INSTRUCTION SHEET FOR PROPER SETUP AND ADJUSTMENTS.

- 1 RECOMMENDED SPARE PARTS
- 2 REFER TO SUPPLIED INSTRUCTION SHEET FOR CLEANING, LUBRICATION AND STORAGE OF APPLICATOR.
- 3 APPLY PART NUMBER 2-23419-6 LOCTITE TO THREADS OF ITEM 242.
- 4 CRIMP HEIGHT REFERENCE SETTING WAS THE SETTING USED WHEN THE APPLICATOR WAS QUALIFIED AT THE FACTORY. ADJUSTMENT MAY BE NECESSARY WHEN RUNNING APPLICATOR IN THE FIELD.
- 5 TERMINAL LUBRICANT IS RECOMMENDED.
- 6 UNLESS SPECIFIED OTHERWISE TORQUE VALUES SHALL BE USED PER DOCUMENT, 101-35000.
- 7 FEED ADJUSTMENTS MAY BE REQUIRED WHEN SWITCHING TERMINALS.

REVISIONS			DATE	DWN	APVD
E	ECR-19-017903		19NOV2019	FJ	TE
F	ECR-22-130908		28FEB2022	ROY	GEB
F1	ECR-22-137514		12MAY2022	ROY	TLE
F2	ECR-23-167537		27FEB2023	FZ	MZ

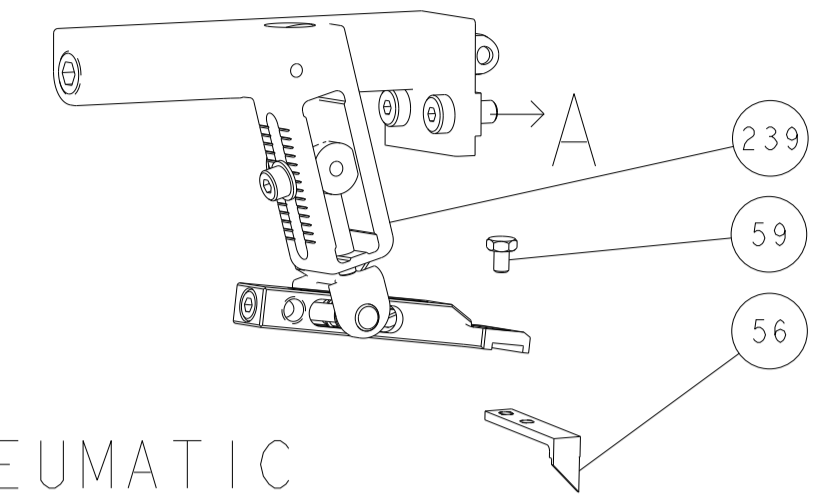
-	1	-	1	-	2119641-1	FEED CAM, AIR FEED	248		
-	1	1	1	1	2119082-4	CAM, SNAIL, INSULATION ADJUSTMENT	244		
-	1	1	1	1	2079764-1	WASHER, WAVE SPRING, CREST-TO-CREST	243		
-	1	1	1	1	2119083-1	RETAINER, INSULATION DIAL	242		
-	1	1	1	1	7-18023-7	SCR, SKT HD CAP M3 X 4.0	241		
-	-	1	-	1	2119580-1	MECHANICAL FEED ASSEMBLY	239		
-	1	-	1	-	2844940-1	AIR FEED MODULE	238		
-	REF	REF	REF	REF	994970-2	COUNTER, MAGNETIC	164		
-	1	1	1	1	1-18028-2	WASHER, FLAT, REG M4	119		
-	1	1	1	1	2119955-1	ASSY, LUBRICATOR, SIDE FEED	113		
-	1	1	1	1	2844908-1	SCREW, LOCKING	99		
-	1	1	1	1	2844907-1	POST, LOCKING	98		
-	1	1	1	1	455888-5	SPACER, CRIMPER	82		
-	1	1	1	1	1803607-3	DOCUMENTATION PACKAGE	71		
-	1	1	1	1	2119791-5	DEPRESSOR, WIRE	70		
-	1	1	1	1	2119740-1	TAG IDENTIFICATION	67		
-	2	2	2	2	2168078-1	SCREW, DRIVE, RH, RoHS, 2 x .188	66		
-	1	1	1	1	2168083-2	SCR, SKT HD CAP, RoHS, M4 X 8.0	60		
-	1	1	1	1	5-18022-5	SCR, HEX HD CAP, M4 X 6.0	59		
-	1	1	1	1	1338685-1	PAWL, FEED	56		
-	4	4	4	4	2168083-3	SCR, SKT HD CAP, RoHS, M4 X 12.0	54		
-	2	2	2	2	2-2168083-5	SCR, SKT HD CAP, RoHS, M4 X 14	53		
-	1	1	1	1	5018030-1	NUT, HEX, REG, RoHS, M3	52		
-	1	1	1	1	811242-5	BUMPER, HOLD DOWN	51		
-	1	1	1	1	690753-2	SPACER, TONKER	50		
-	1	2	1	2	18023-9	SCR, SKT HD CAP M4 X 6.0	49		
-	-	1	-	1	2119652-1	FEED CAM, PRE FEED	48		
-	-	1	-	1	2119653-1	FEED CAM, POST FEED	47		
-	1	1	1	1	1803583-9	APPLICATOR BASIC ASSEMBLY, SF	46		
-	1	1	1	1	1803515-1	RAM ASSEMBLY, SF ATLANTIC	44		
-	1	1	1	1	1803602-1	SCR, BHSC, RoHS (M8 X 25)	41		
-	1	1	1	1	1752356-3	SUPPORT, TERMINAL	34		
-	2	2	2	2	2079383-5	SCR, BHSC, RoHS (M4 X 20)	33		
-	2	2	2	2	2-2844962-4	SPACER, CYLINDRICAL, STRIP GUIDE	30		
-	1	1	1	1	2844992-1	ASSEMBLY, STRIP GUIDE	29		
-	1	1	1	1	1320928-2	STRIP GUIDE	24		
-	1	1	1	1	2168083-2	SCR, SKT HD CAP, RoHS, M4 X 8.0	21		
-	1	1	1	1	1-18028-2	WASHER, FLAT, REG M4	20		
-	1	1	1	1	2119533-1	STRIPPER, SIDE FEED	19		
-	1	1	1	1	2119806-1	INSERT, SHEAR	13		
-	1	1	1	1	3-22280-3	SPRING, COMPRESSION	12		
-	1	1	1	1	1-356885-4	STOP, SHEAR	11		
-	1	1	1	1	2119805-1	SHEAR HOLDER, FRONT	10		
-	1	1	1	1	1803095-3	FLOATING SHEAR, FRONT	9		
-	1	2	2	1	1	7-1633139-5	ANVIL, COMBINATION	8	
-	1	1	1	1	5-240641-2	SPACER	7		
-	-	-	-	-	-	-	6		
-	1	1	1	1	2119757-4	DEPRESSOR, SHEAR	5		
-	1	1	1	1	238011-4	BLOCK, CRIMPER SPACER	4		
-	1	2	2	1	1	4-1633964-6	CRIMPER, INSULATION OVERLAP PREMIUM	3	
-	-	-	-	-	-	-	2		
-	1	2	2	1	1	6-1333281-9	CRIMPER, WIRE PREMIUM	1	
-	77	72	71	71	-2	-1	PART NO	DESCRIPTION	ITEM NO

DIMENSIONS:		TOLERANCES UNLESS OTHERWISE SPECIFIED:	
mm	0 PLC ±	1 PLC ±	3 PLC ±
mm	4 PLC ±	ANGLES ±	FINISH ±
MATERIAL:	-	WEIGHT:	-
Customer Accessible Production Drawing	SCALE 1:2	SHEET 1 OF 4	REV F2

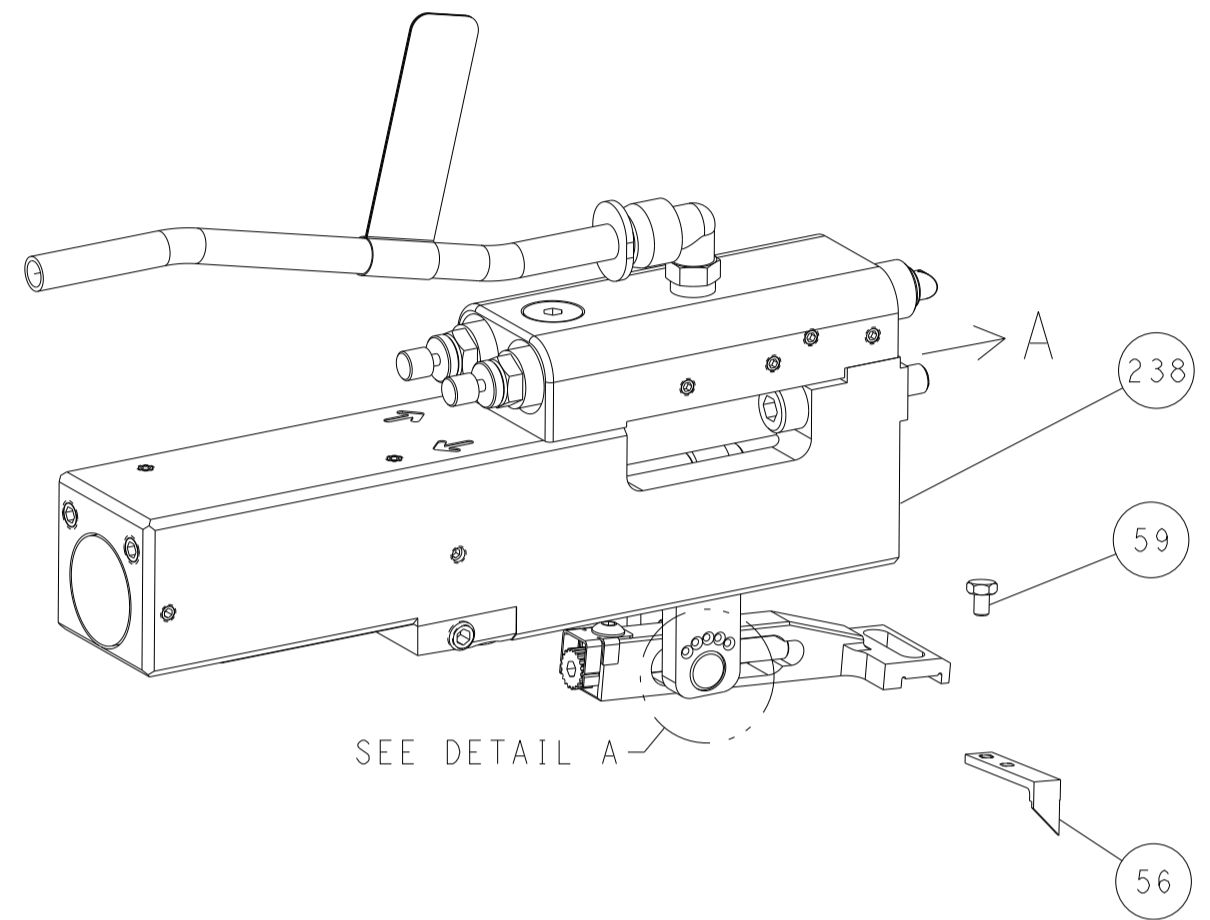
ATLANTIC VERSION
Shown on sheets 1 of 4 & 2 of 4
(Pacific version shown on sheets 3 of 4 & 4 of 4)

LOC	DIST	REVISIONS					
A	66	P	LTN	DESCRIPTION	DATE	DWN	APVD
		-		SEE SHEET 1			

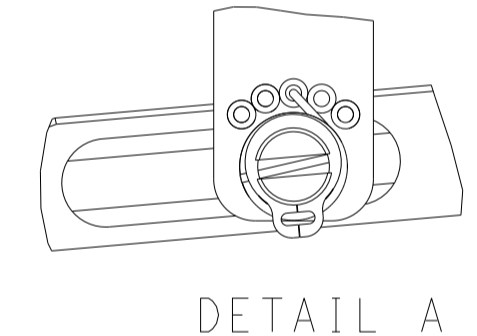
FEED TYPE MECHANICAL



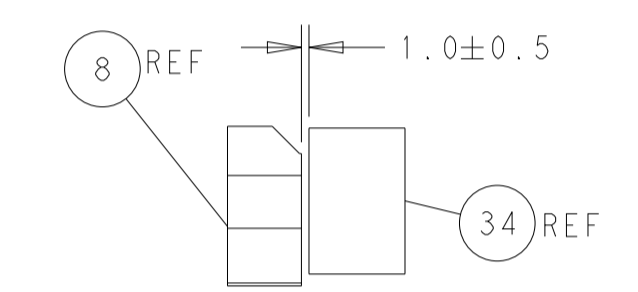
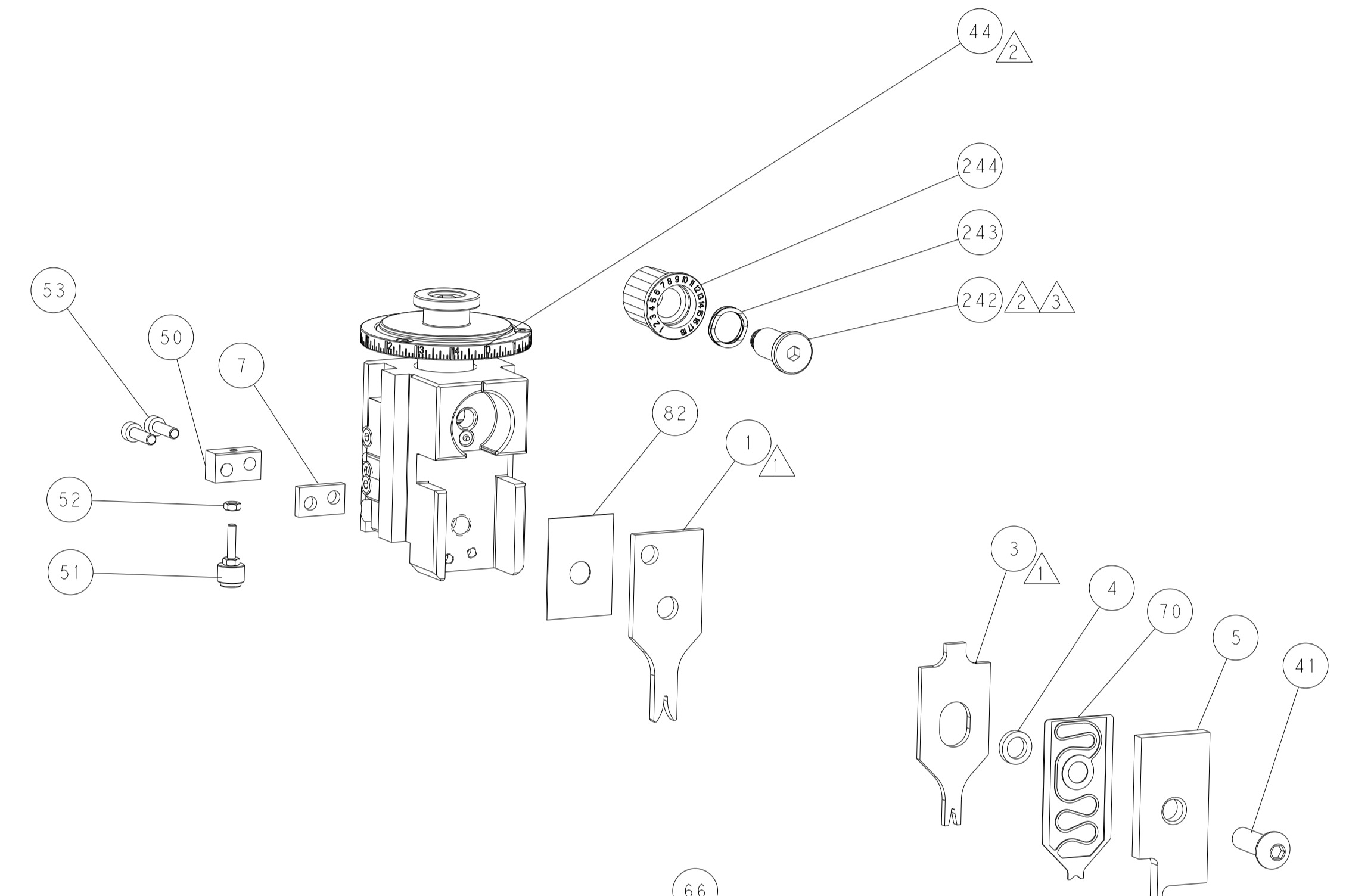
PNEUMATIC



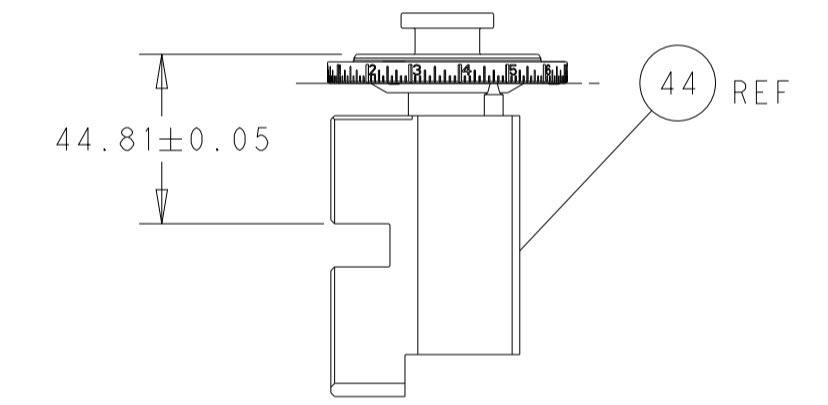
FEED SPRING SETTING POSITION (SHOWN FROM REAR SIDE)



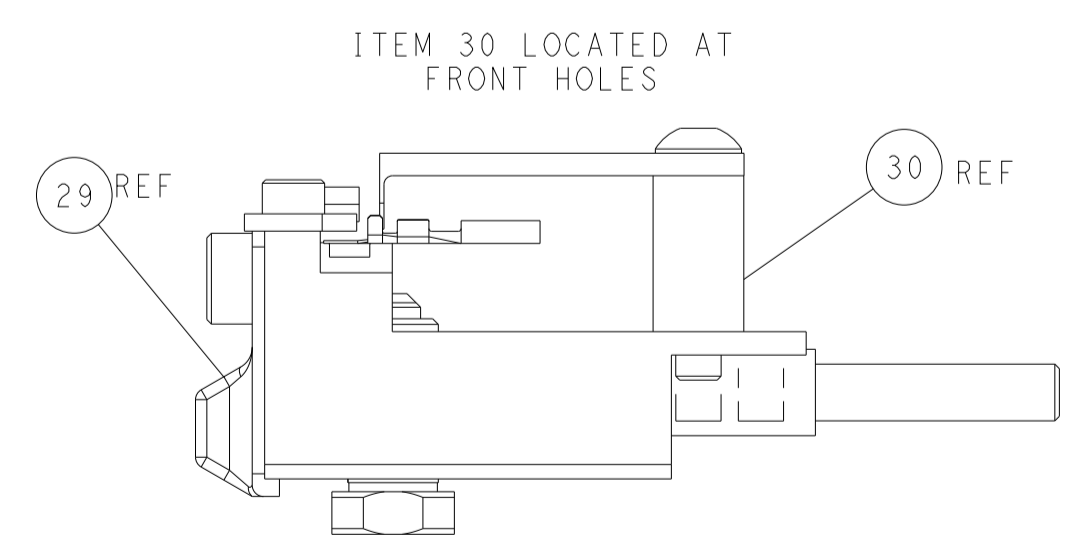
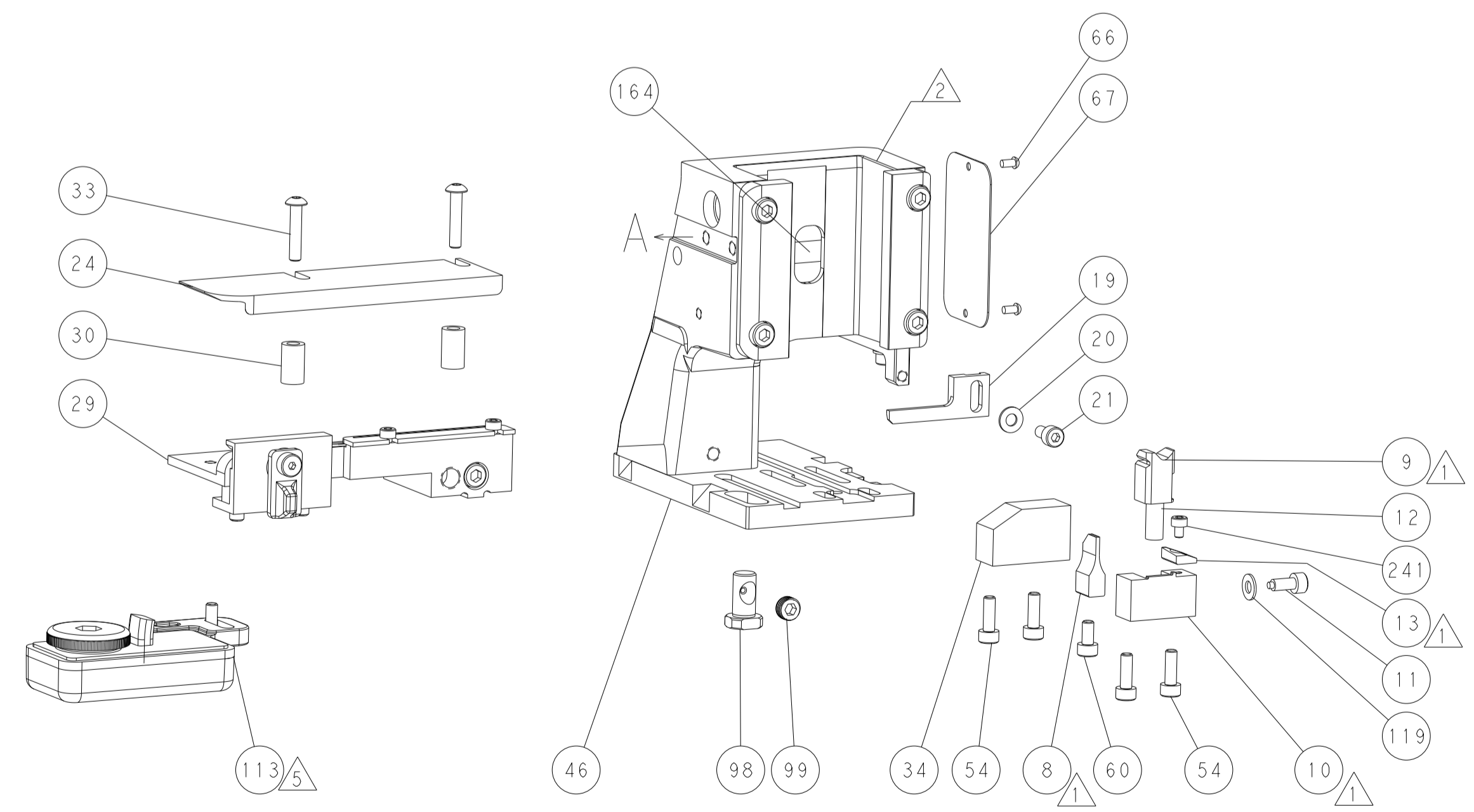
DETAIL A



TERMINAL SUPPORT LOCATION

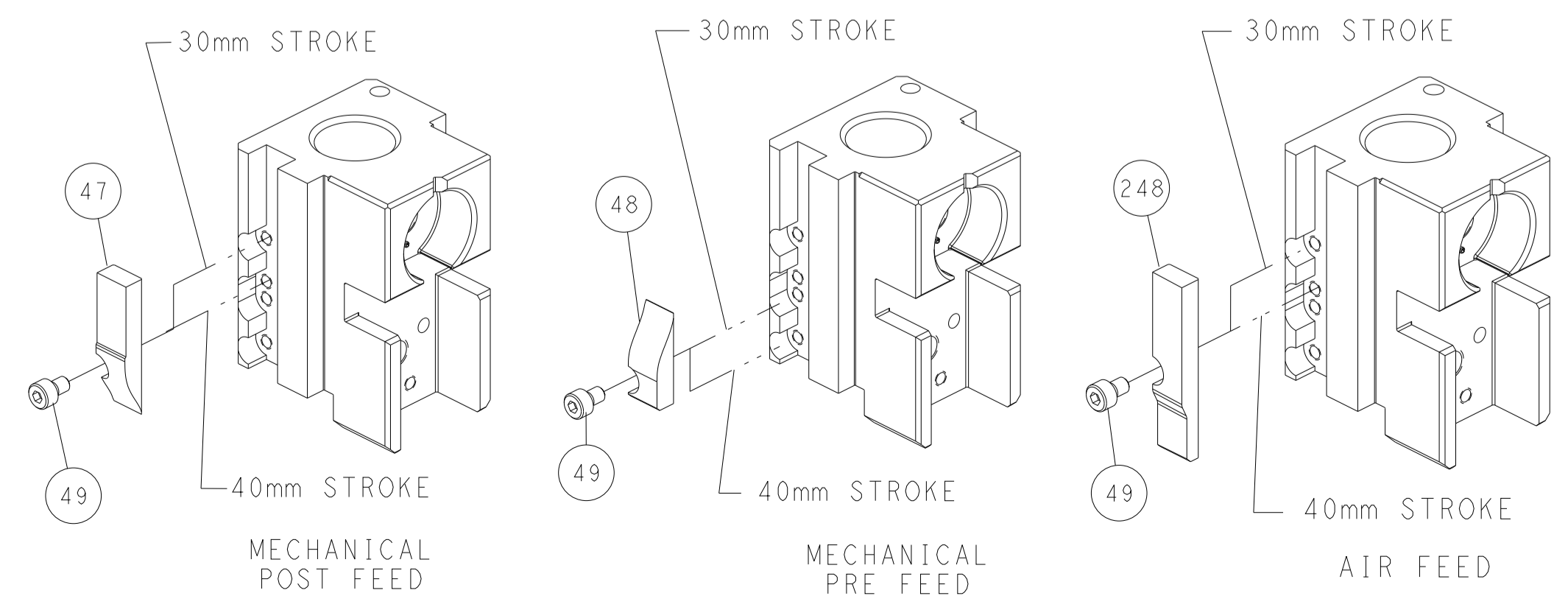


RAM SET-UP



ITEM 30 LOCATED AT FRONT HOLES

CAM POSITIONS



ATLANTIC VERSION
 Shown on sheets 1 of 4 & 2 of 4
 (Pacific version shown on sheets 3 of 4 & 4 of 4)

<small>THIS DRAWING IS UNPUBLISHED. RELEASED FOR PUBLICATION BY TYCO ELECTRONICS CORPORATION. ALL RIGHTS RESERVED.</small>		DWN: R. HUANG 17MAY2012 CHK: S. XI 17MAY2012 APVD: S. XI 17MAY2012 PRODUCT SPEC: - APPLICATION SPEC: - WEIGHT: - MATERIAL: -	NAME: Ocean Side Feed Applicator SIZE: A1 CAGE CODE: 00779 DRAWING NO: C=2151437 SCALE: 1:2 SHEET: 2 of 4 REV: F2	TE Connectivity Harrisburg, PA 17105-3608
--	--	--	---	--

PART NUMBER	REVISION	DESCRIPTION	FEED TYPE
2-2151437-1	F	FINE CRIMP HEIGHT ADJUST	MECHANICAL
2-2151437-2	F	FINE CRIMP HEIGHT ADJUST	PNEUMATIC
7-2151437-7	C	CRIMP TOOLING KIT	-

PACIFIC VERSION TERMINATOR
INTERFACE ADAPTER



APPLICATOR DATA		
CRIMP	SIZE	TYPE
WIRE	1.40 mm [.055]	F
INSUL	1.40 mm [.055]	OV
APPLICATOR INSTRUCTIONS 408-35042		

TERMINAL DATA: SUMITOMO TERMINAL SUMITOMO CRIMP SPECIFICATION			
TERMINAL NAME: 0.64 UNSEALED TERMINAL, L			
WIRE STRIP LENGTH 4.00-4.50 mm [.157-.177 IN]	INSULATION DIAMETER RANGE Ø 1.78mm MAX [.070 IN MAX]		
TERMINAL APPLICATION SPECIFICATION (A)COMP06001486 Rev T--272-A			
TERMINALS APPLIED			
TE TERMINAL (A) 1832148-1	SUMITOMO TERMINAL (A) 8100-3623	TE TERMINAL (A) 1832152-1	SUMITOMO TERMINAL (A) 8100-3625

TERMINAL DATA: SUMITOMO TERMINAL SUMITOMO CRIMP SPECIFICATION			
TERMINAL NAME: 0.64 UNSEALED TERMINAL, M			
WIRE STRIP LENGTH 4.00-4.50 mm [.157-.177 IN]	INSULATION DIAMETER RANGE Ø 1.00-1.40mm [.039-.055 IN]		
TERMINAL APPLICATION SPECIFICATION (B)COMP06001486 Rev T--272E-D			
TERMINALS APPLIED			
TE TERMINAL (B) 2318384-1	SUMITOMO TERMINAL (B) 8100-3624	TE TERMINAL (B) 1949379-1	SUMITOMO TERMINAL (B) 8100-3622
(B) 2318384-2	(B) 8100-3628	(B) 1949379-2	(B) 8100-3626
(B) 2380005-1	(B) 8100-3624		

WIRE SIZE	CRIMP HEIGHT mm [INCH]	CRIMP HEIGHT REFERENCE SETTING
0.50mm2	1.05+/-0.05 [.041+/- .002]	8.9
0.30mm2	0.95+/-0.05 [.037+/- .002]	9.5

WIRE SIZE	CRIMP HEIGHT mm [INCH]	CRIMP HEIGHT REFERENCE SETTING
0.35mm2	0.90+/-0.05 [.035+/- .002]	8.8
0.22mm2	0.80+/-0.05 [.031+/- .002]	10.0

***WARNING**
ON INSTALLATION, SET WIRE DISC TO CRIMP HEIGHT REFERENCE SETTING FOR LARGEST WIRE SIZE. CRIMP HEIGHT REFERENCE SETTINGS GREATER THAN THE VALUE SHOWN MAY CAUSE DAMAGE TO THE CRIMP TOOLING. REFER TO THE INSTRUCTION SHEET FOR PROPER SETUP AND ADJUSTMENTS.

- RECOMMENDED SPARE PARTS
- REFER TO SUPPLIED INSTRUCTION SHEET FOR CLEANING, LUBRICATION AND STORAGE OF APPLICATOR.
- APPLY PART NUMBER 2-23419-6 LOCTITE TO THREADS OF ITEM 242.
- CRIMP HEIGHT REFERENCE SETTING WAS THE SETTING USED WHEN THE APPLICATOR WAS QUALIFIED AT THE FACTORY. ADJUSTMENT MAY BE NECESSARY WHEN RUNNING APPLICATOR IN THE FIELD.
- TERMINAL LUBRICANT IS RECOMMENDED.
- UNLESS SPECIFIED OTHERWISE TORQUE VALUES SHALL BE USED PER DOCUMENT, 101-35000.
- FEED ADJUSTMENTS MAY BE REQUIRED WHEN SWITCHING TERMINALS.

LOC	DIST	REVISIONS			
A	66	REV	DATE	BY	APPD
-	-	SEE SHEET 1	-	-	-

-	1	1	2119082-4	CAM, SNAIL, INSULATION ADJUSTMENT	244
-	1	1	2079764-1	WASHER, WAVE SPRING, CREST-TO-CREST	243
-	1	1	2119083-1	RETAINER, INSULATION DIAL	242
-	1	1	7-18023-7	SCR, SKT HD CAP M3 X 4.0	241
-	-	1	2119580-1	MECHANICAL FEED ASSEMBLY	239
-	1	-	2844940-1	AIR FEED MODULE	238
-	REF	REF	994970-2	COUNTER, MAGNETIC	164
-	1	-	2119641-2	FEED CAM, AIR FEED	151
-	1	1	2168083-8	SCR, SKT HD CAP, RoHS, M4 X 16	144
-	4	4	2168083-9	SCR, SKT HD CAP, RoHS, M4 X 20	143
-	-	1	2119653-2	FEED CAM, POST FEED	142
-	1	1	1-1803583-0	APPLICATOR BASIC ASSEMBLY, SF	141
-	1	1	1803516-1	RAM ASSEMBLY, SF PACIFIC	140
-	1	1	1-18028-2	WASHER, FLAT, REG M4	119
-	1	1	2119955-1	ASSY, LUBRICATOR, SIDE FEED	113
-	1	1	2844908-1	SCREW, LOCKING	99
-	1	1	2844907-1	POST, LOCKING	98
-	1	1	455888-5	SPACER, CRIMPER	82
-	1	1	1803607-3	DOCUMENTATION PACKAGE	71
-	1	1	2119791-5	DEPRESSOR, WIRE	70
-	1	1	2119740-1	TAG, IDENTIFICATION	67
-	2	2	2168078-1	SCREW, DRIVE, RH, RoHS, 2 x .188	66
-	1	1	5-18022-5	SCR, HEX HD CAP, M4 X 6.0	59
-	1	1	1338685-1	PAWL, FEED	56
-	2	2	2-2168083-5	SCR, SKT HD CAP, RoHS, M4 X 14	53
-	1	1	5018030-1	NUT, HEX, REG, RoHS, M3	52
-	1	1	811242-5	BUMPER, HOLD DOWN	51
-	1	1	690753-2	SPACER, TONKER	50
-	1	2	18023-9	SCR, SKT HD CAP M4 X 6.0	49
-	-	1	2119652-1	FEED CAM, PRE FEED	48
-	1	1	1803602-1	SCR, BHSC, RoHS (M8 X 25)	41
-	1	1	1752356-3	SUPPORT, TERMINAL	34
-	2	2	2079383-5	SCR, BHSC, RoHS (M4 X 20)	33
-	2	2	2-2844962-4	SPACER, CYLINDRICAL, STRIP GUIDE	30
-	1	1	2844992-1	ASSEMBLY, STRIP GUIDE	29
-	1	1	1320928-2	STRIP GUIDE	24
-	1	1	2168083-2	SCR, SKT HD CAP, RoHS, M4 X 8.0	21
-	1	1	1-18028-2	WASHER, FLAT, REG M4	20
-	1	1	2119533-1	STRIPPER, SIDE FEED	19
-	1	1	2119806-1	INSERT, SHEAR	13
-	1	1	3-22280-3	SPRING, COMPRESSION	12
-	1	1	1-356885-4	STOP, SHEAR	11
-	1	1	2119805-1	SHEAR HOLDER, FRONT	10
-	1	1	1803095-3	FLOATING SHEAR, FRONT	9
-	1	1	7-1633139-5	ANVIL, COMBINATION	8
-	1	1	5-240641-2	SPACER	7
-	-	-	-	-	6
-	1	1	2119757-4	DEPRESSOR, SHEAR	5
-	1	1	238011-4	BLOCK, CRIMPER SPACER	4
-	1	1	4-1633964-6	CRIMPER, INSULATION OVERLAP PREMIUM	3
-	-	-	-	-	2
-	1	1	6-1333281-9	CRIMPER, WIRE PREMIUM	1

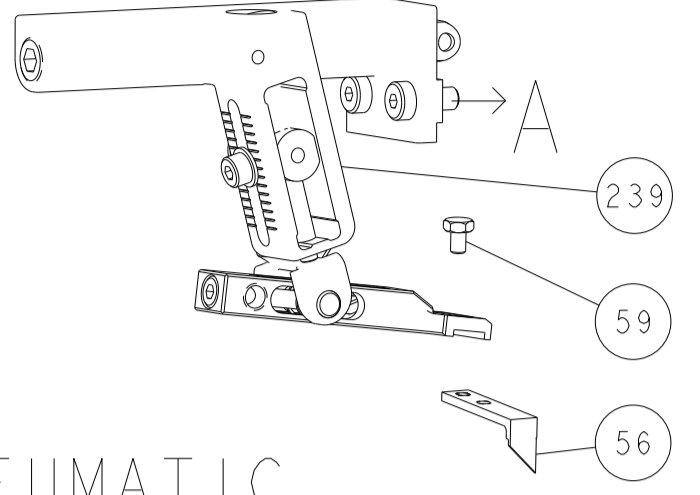
PACIFIC VERSION
Shown on sheets 3 of 4 & 4 of 4
(Atlantic version shown on sheets 1 of 4 & 2 of 4)

DIMENSIONS:		TOLERANCES UNLESS OTHERWISE SPECIFIED:		MATERIAL:	
mm	0 PLC ±	1 PLC ±	2 PLC ±	3 PLC ±	4 PLC ±
	ANGLES ±	FINISH			

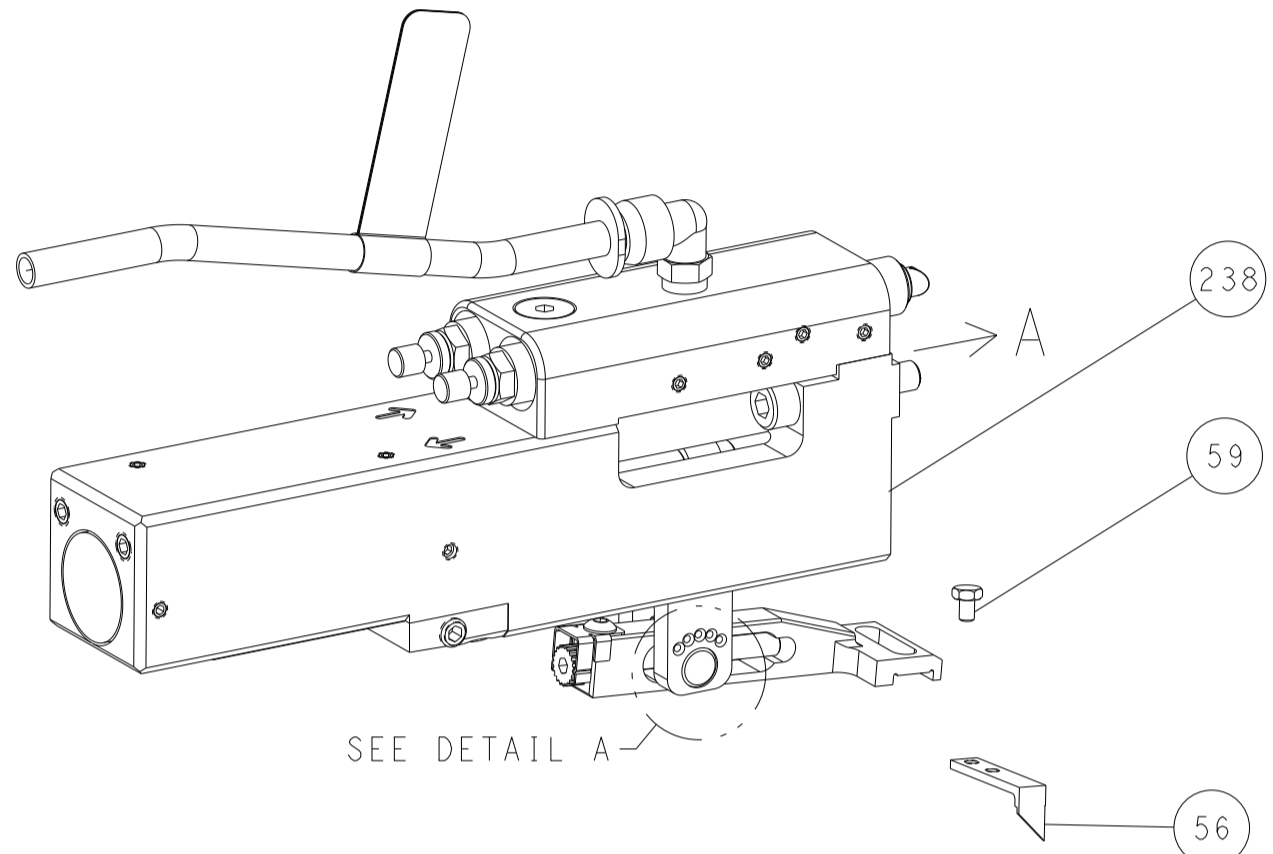
OWN	H. HUANG	17MAY2012	NAME	TE Connectivity
CHK			PRODUCT SPEC	Harrisburg, PA 17105-3608
APVD	S. XI	17MAY2012	APPLICATION SPEC	
SIZE	A1	00779	CAGE CODE	2151437
SCALE	1:2	SHEET	3	OF 4
REV	F2			

LOC	DIST	REVISIONS					
A	66	P	LTN	DESCRIPTION	DATE	DWN	APVD
		-		SEE SHEET 1			

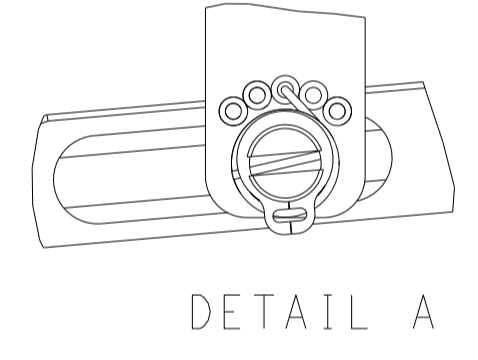
FEED TYPE MECHANICAL



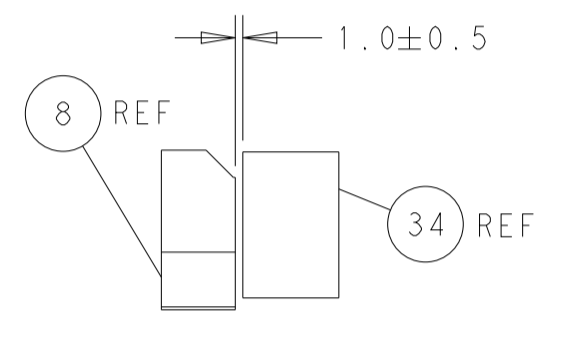
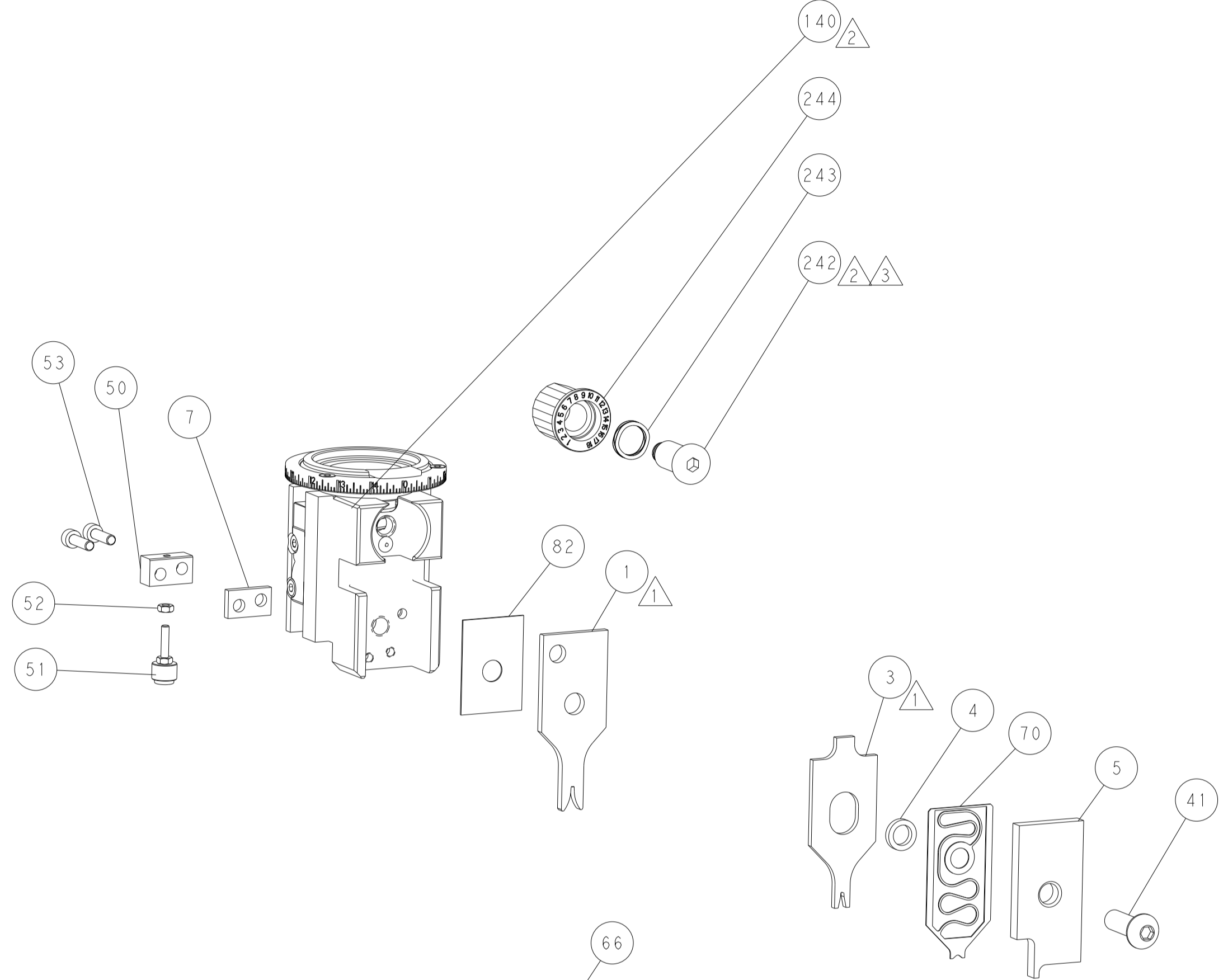
PNEUMATIC



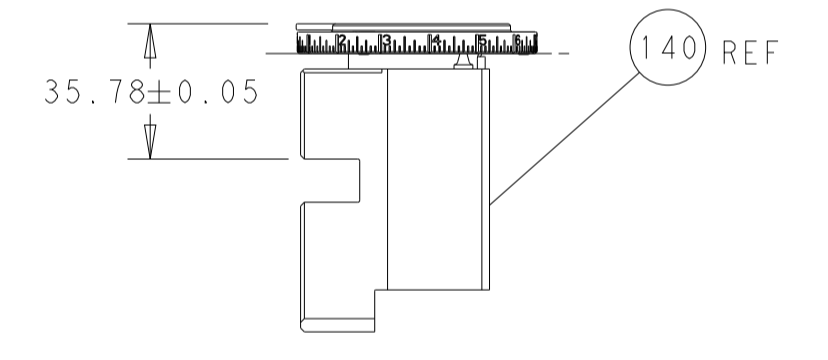
FEED SPRING SETTING POSITION (SHOWN FROM REAR SIDE)



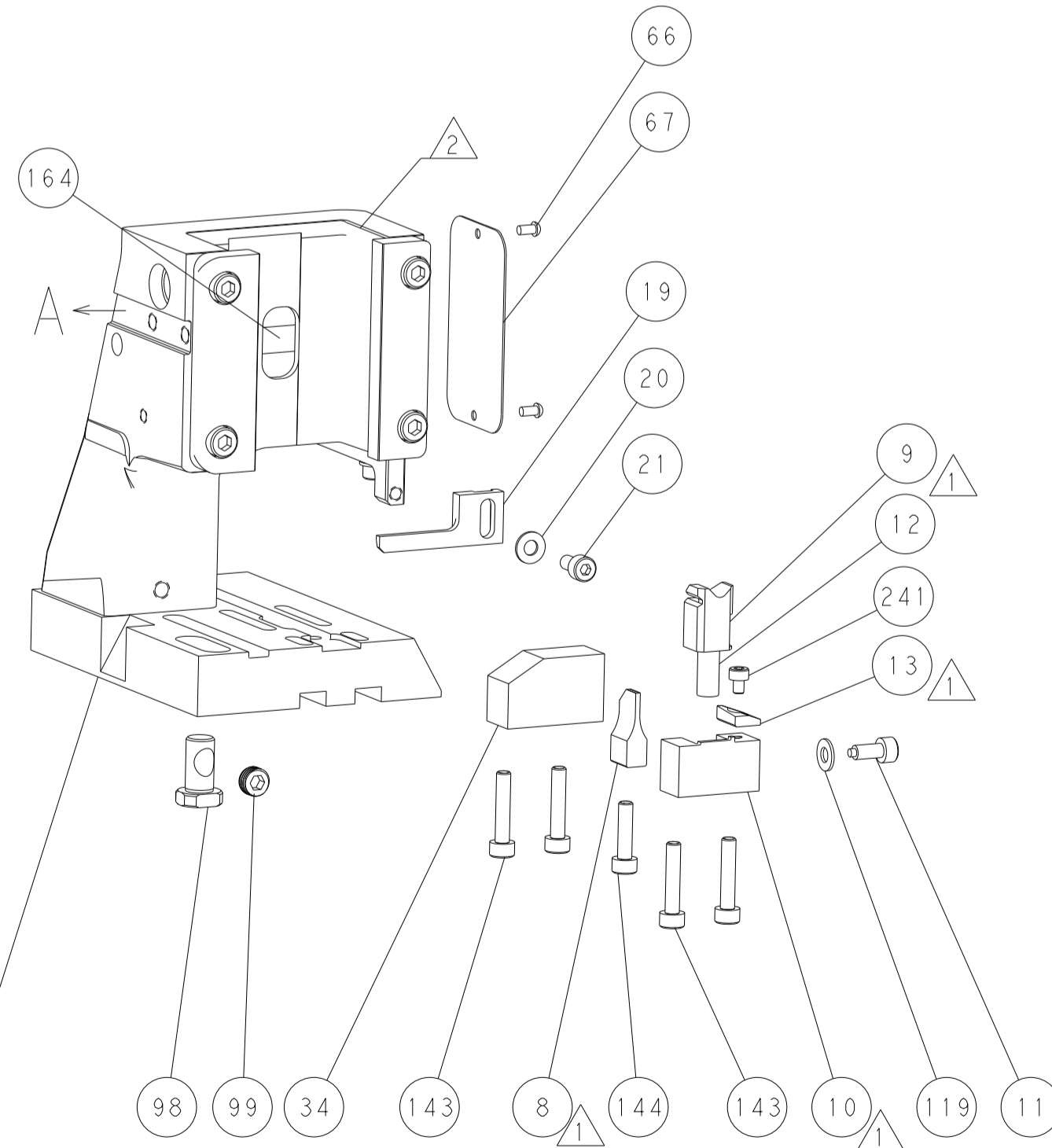
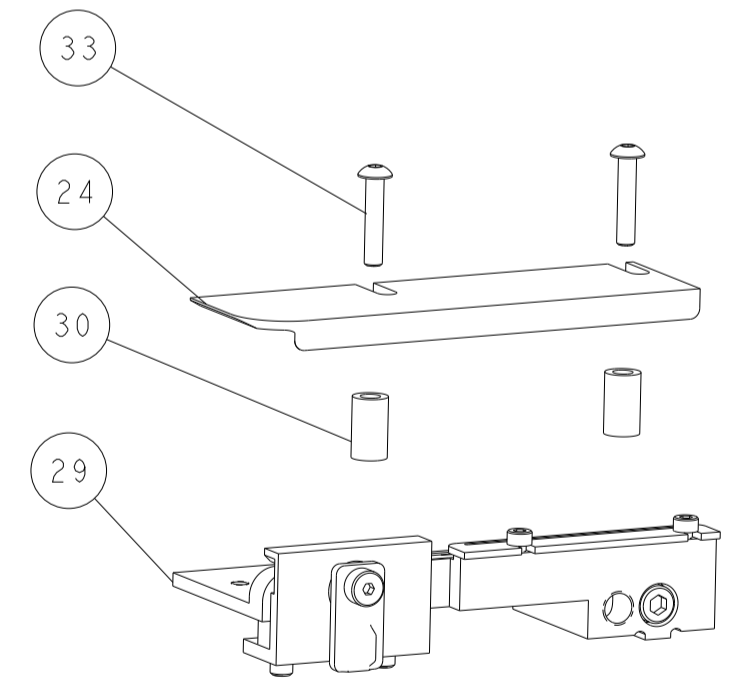
DETAIL A



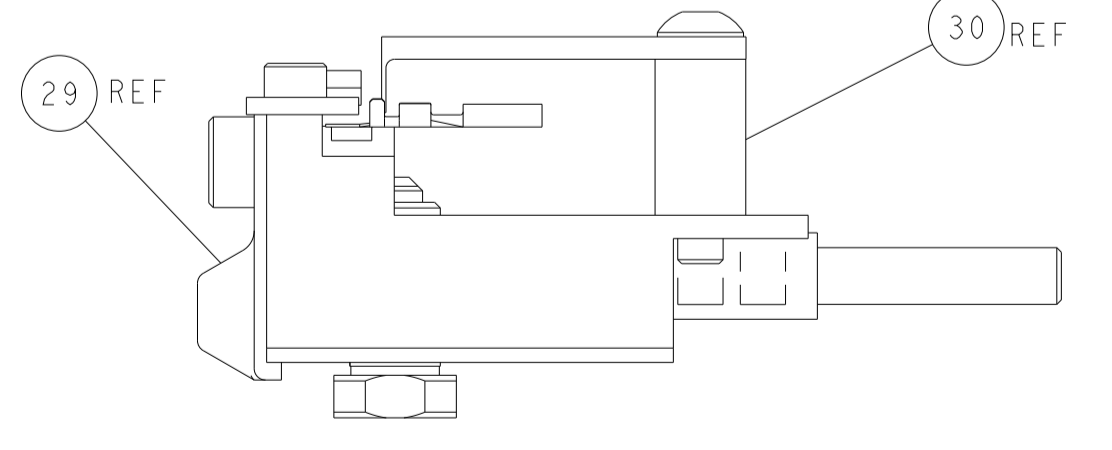
TERMINAL SUPPORT LOCATION



RAM SET-UP

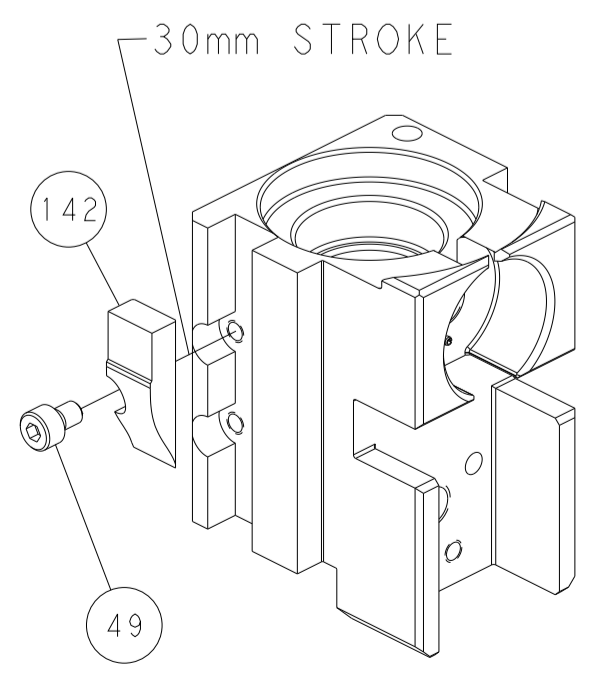


ITEM 30 LOCATED AT FRONT HOLES

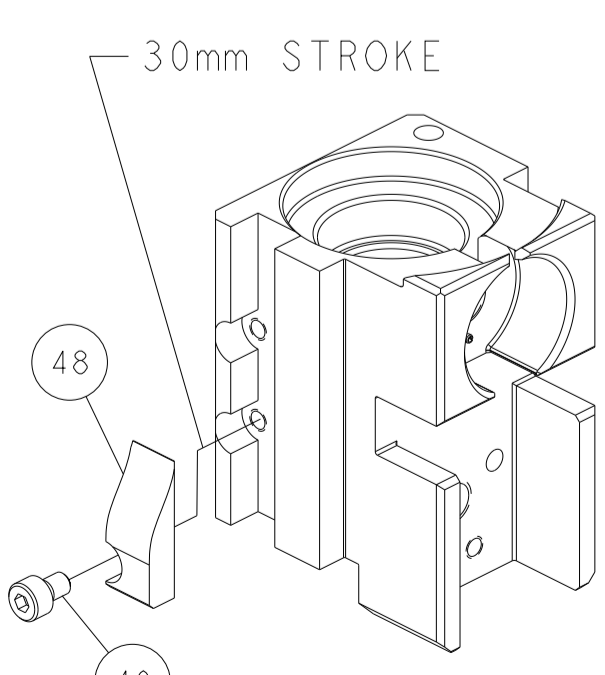


FEED TRACK POSITION GUIDE BY INSULATION BARREL

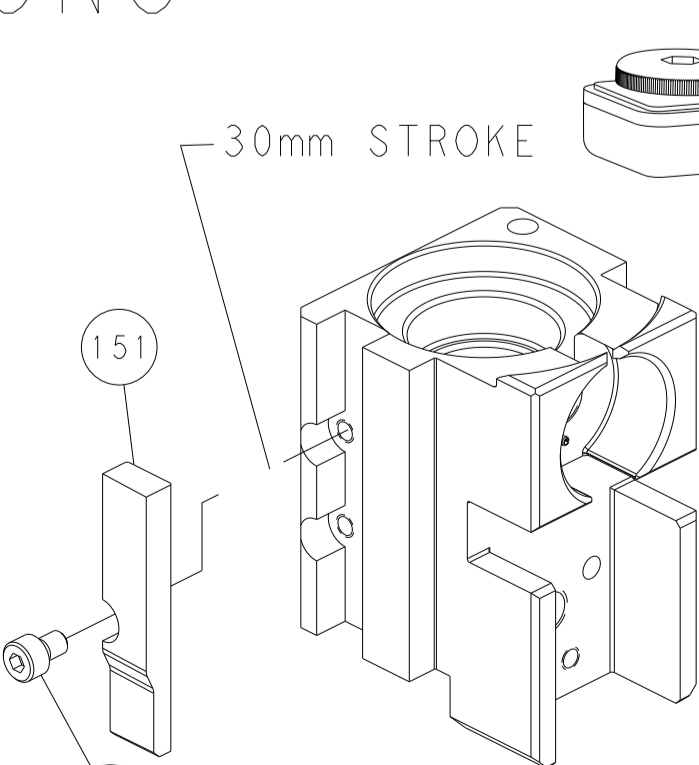
CAM POSITIONS



MECHANICAL POST FEED



MECHANICAL PRE FEED



AIR FEED

PACIFIC VERSION
 Shown on sheets 3 of 4 & 4 of 4
 (Atlantic version shown on sheets 1 of 4 & 2 of 4)

<small>THIS DRAWING IS UNPUBLISHED. RELEASED FOR PUBLICATION. IT IS THE PROPERTY OF TYCO ELECTRONICS CORPORATION. IT IS TO BE USED ONLY FOR THE PURPOSES AND IN THE QUANTITIES SPECIFIED IN THE ORDER. IT IS NOT TO BE REPRODUCED OR TRANSMITTED IN ANY FORM OR BY ANY MEANS, ELECTRONIC OR MECHANICAL, INCLUDING PHOTOCOPYING, RECORDING, OR BY ANY INFORMATION STORAGE AND RETRIEVAL SYSTEM, WITHOUT PERMISSION IN WRITING FROM TYCO ELECTRONICS CORPORATION.</small>		DWN: H. HUANG CHK: S. XI APVD: S. XI PRODUCT SPEC: 17MAY2012 APPLICATION SPEC:	DATE: 17MAY2012 NAME: Ocean Side Feed Applicator SIZE: A1 CAGE CODE: 00779 DRAWING NO: C=2151437 RESTRICTED TO: Customer Accessible Production Drawing
DIMENSIONS: mm TOLERANCES UNLESS OTHERWISE SPECIFIED: 0 PLC ± 1 PLC ± 2 PLC ± 3 PLC ± 4 PLC ± ANGLES FINISH	WEIGHT: - SCALE: 1:2 SHEET: 4 OF 4 REV: F2	STE TE Connectivity Harrisburg, PA 17105-3608	