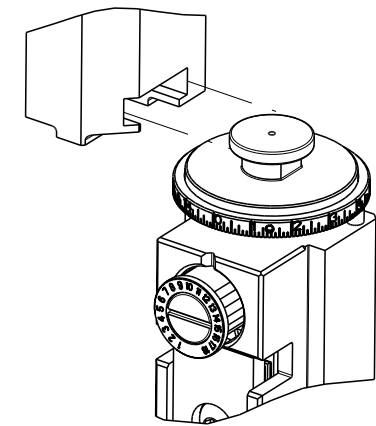


THIS DRAWING IS UNPUBLISHED.	RELEASED FOR PUBLICATION	2011	
BY TYCO ELECTRONICS CORPORATION. ALL RIGHTS RESERVED.			
PART NUMBER	REVISION	DESCRIPTION	FEED TYPE
2151034-2	J	FINE CRIMP HEIGHT ADJUST	PNEUMATIC
7-2151034-2	J	PNEUMATIC AND CRIMP TOOLING KIT	PNEUMATIC
7-2151034-7	A	CRIMP TOOLING KIT	-

ATLANTIC VERSION TERMINATOR INTERFACE ADAPTER



APPLICATOR DATA		
CRIMP	SIZE	TYPE
WIRE	.176 [4.47 mm]	○
INSUL	-	-
APPLICATOR INSTRUCTIONS 408-35042		

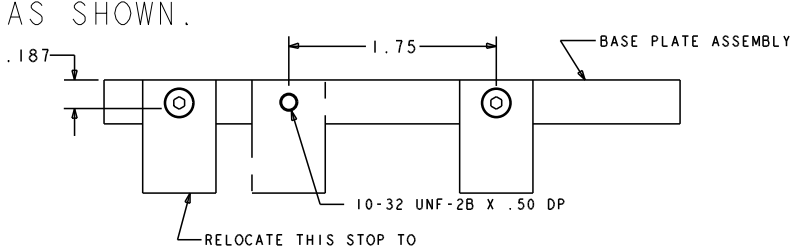
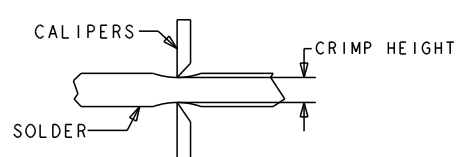
TERMINAL DATA: TE TERMINAL		TE CRIMP SPECIFICATION	
TERMINAL NAME: FULLY INSULATED FASTON			
WIRE STRIP LENGTH		INSULATION DIAMETER RANGE	
.265-.297 IN [6.73-7.54 mm]		∅	△8
TERMINAL APPLICATION SPECIFICATION	114-2123	-	-
TERMINALS APPLIED △4			
TE TERMINAL	TE TERMINAL	TE TERMINAL	TE TERMINAL
2-520102-1	5-520183-2	2-520274-2	
2-520102-2	9-520183-2	2-521144-2	
2-520181-2	2-520193-2	2-520261-2	
2-520181-4	9-520193-2	9-520261-2	
5-520181-2	2-521102-2	2-520263-2	
9-520181-2	2-521104-2	2-520263-4	
2-520183-2	2-521308-2	5-520263-2	
2-520183-4	2-521406-2		



WIRE SIZE	CRIMP HEIGHT INCH [mm]	CRIMP HEIGHT REFERENCE SETTING	∅ SOLDER
18, (2)22, or (1)20+(1)22	0.070+/-0.002 [1.78+/-0.05]	6.4	.125 IN [3.175mm]
20 or 22	0.065+/-0.002 [1.65+/-0.05]	8.3	.125 IN [3.175mm]

***WARNING**
ON INSTALLATION, SET WIRE DISC TO CRIMP HEIGHT REFERENCE SETTING FOR LARGEST WIRE SIZE. CRIMP HEIGHT REFERENCE SETTINGS GREATER THAN THE VALUE SHOWN MAY CAUSE DAMAGE TO THE CRIMP TOOLING, REFER TO THE INSTRUCTION SHEET FOR PROPER SETUP AND ADJUSTMENTS.

- △ RECOMMENDED SPARE PARTS
- △ REFER TO SUPPLIED INSTRUCTION SHEET FOR CLEANING, LUBRICATION AND STORAGE OF APPLICATOR.
- △ CRIMP HEIGHT REFERENCE SETTING WAS THE SETTING USED WHEN THE APPLICATOR WAS QUALIFIED AT THE FACTORY. ADJUSTMENT MAY BE NECESSARY WHEN RUNNING APPLICATOR IN THE FIELD.
- △ TO CONVERT THE APPLICATOR TO A NON-CARRIER CUTTING STYLE, REMOVE ITEM 13 AND ATTACH TO THE LOCATION ON THE BACK SIDE OF THE HOUSING. REFER TO INSTRUCTION SHEET FOR ADDITIONAL INFORMATION.
- △ ITEM 7 MUST BE REMOVED IF APPLICATOR IS USED ON BENCH MACHINE.
- △ ITEMS 5 AND 9 OR ITEMS 10 AND 22 ARE REQUIRED WHEN RUNNING ON A LEADMAKER. ITEM 42 OR 43 REQUIRED WHEN RUNNING ON A BENCH MACHINE.
- △ FEED ADJUSTMENT MAY BE REQUIRED WHEN SWITCHING TERMINALS.
- △ GROUP 1 TERMINALS: ∅.135 IN [3.43mm] MAX INSULATION
GROUP 2 TERMINALS: ∅.200 IN [5.08mm] MAX INSULATION
- △ USE ITEMS 5, 9, OR 42 WITH GROUP 1 TERMINALS
USE ITEMS 10, 22, OR 43 WITH GROUP 2 TERMINALS
- △ TO CHECK CRIMP HEIGHT, CRIMP SOLDER (∅.12 IN [3.05mm] 60/40 SOLID CORE) AND MEASURE AT CENTER OF SLUG.
- △ IT MAY BE NECESSARY TO MODIFY THE T-TERMINATING/K-PRESS BASE PLATE BEFORE USE BY ADDING A 10-32 HOLE TO RELOCATE THE FORWARD STOP AS SHOWN.
- △ ITEMS 253 AND 255 MUST BE INSTALLED IN THE G-TERMINATING UNIT CHIP RELIEF HOLE BEFORE INSTALLING THE APPLICATOR.
- △ ITEM 257, REQUIRED IF APPLICATOR IS RUN ON T-TERMINATING UNIT/K-PRESS. GUARD, ITEM 256, REQUIRED IF APPLICATOR IS BEING USED ON G-TERMINATOR.



- △4 TERMINAL PITCH NOT COMPATIBLE WITH MECHANICAL FEED
- △5 HOLD DOWN BRACKET 803931-1 IS NEEDED IN ORDER TO BE USED WITH K-PRESS
- 16. UNLESS SPECIFIED OTHERWISE TORQUE VALUES SHALL BE USED PER DOCUMENT, 101-35000.

LOC	DIST	REVISIONS					
A	66	#	LY#	DESCRIPTION	DATE	OWN	APVD
		F		ECR-18-017749	12NOV2018	JAH	CT
		G		ECR-19-000331	09JAN2019	FJ	YY
		H		ECR-19-000727	23JAN2019	MZ	CT
		J		ECR-19-005049	28MAR2019	LG	TE

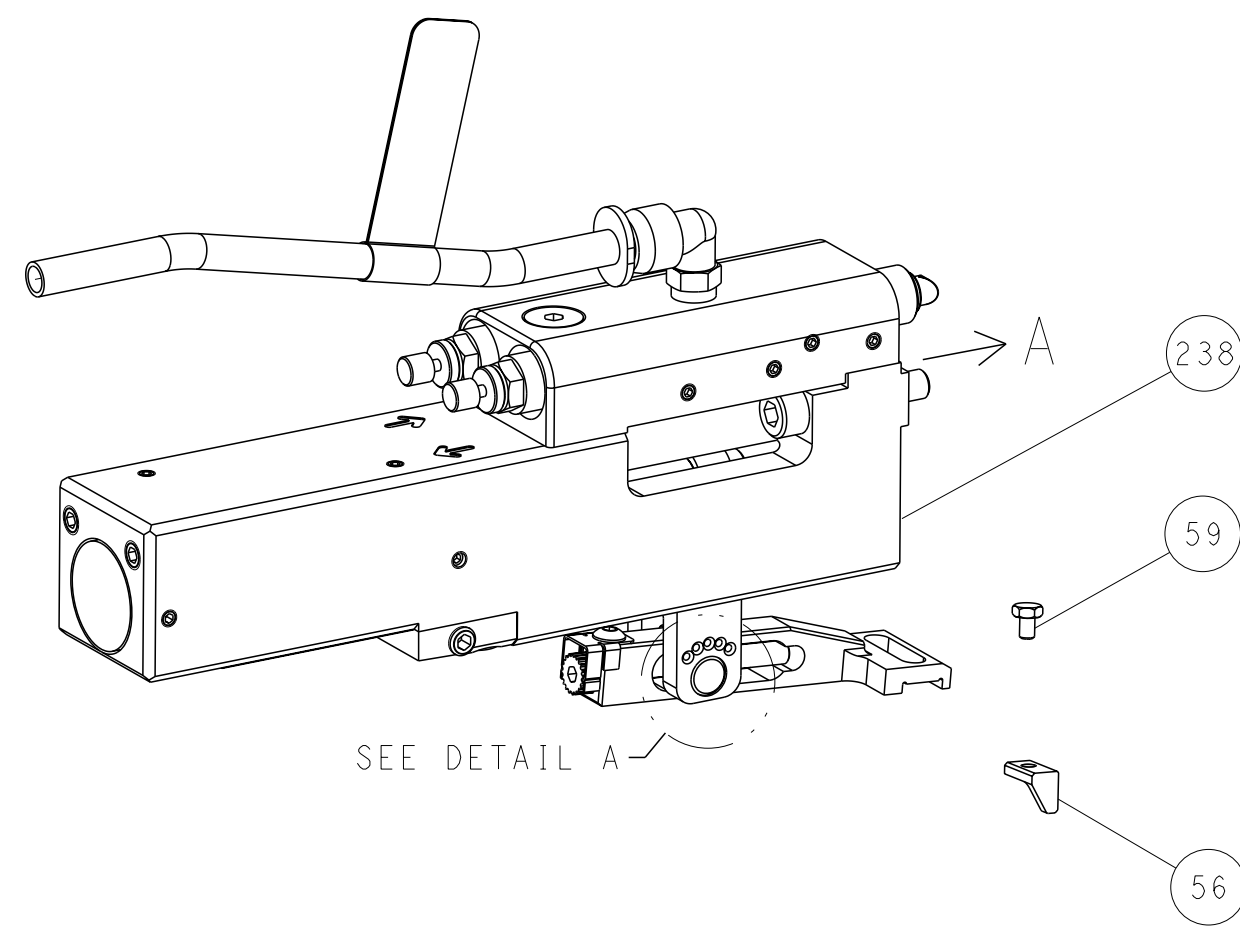
△3	-	REF	REF	462992-5	GUARD ASSY	257	
△3	-	REF	REF	679532-1	INSERT, GUARD	256	
△2	-	1	1	189728-1	BRACKET, SPACER	255	
△2	-	1	1	568681-1	SPACER, BASE PLATE	253	
	-	1	1	2119641-1	FEED CAM, AIR FEED	248	
	-	1	1	18023-1	SCR, SKT HD CAP M3 X 5.0	241	
	-	1	1	2844940-2	AIR FEED MODULE	238	
	-	1	1	1-18028-0	WASHER, FLAT, REG M8	192	
	-	REF	REF	994970-2	COUNTER, MAGNETIC	164	
	-	1	1	1-22281-8	SPRING, COMPRESSION	121	
	-	1	1	2844908-1	SCREW, LOCKING	99	
	-	1	1	2844907-1	POST, LOCKING	98	
	-	1	1	1-690438-0	FRONT STRIP GUIDE	96	
	-	4	4	2168083-1	SCR, SKT HD CAP, RoHS, M3 X 8.0	95	
	-	1	1	2168083-6	SCR, SKT HD CAP, RoHS, M5 X 65	93	
	-	1	1	455888-4	SPACER, CRIMPER	82	
	-	1	1	240641-6	SPACER	81	
	-	1	1	1803607-3	DOCUMENTATION PACKAGE	71	
	-	1	1	2161332-2	DEPRESSOR, WIRE FUNNEL	70	
	-	1	1	2161331-1	SPACER, WIRE FUNNEL DEPRESSOR	69	
	-	2	2	1-18028-4	WASHER, FLAT, REG M3	68	
	-	1	1	2119740-1	TAG, IDENTIFICATION	67	
	-	2	2	2168078-1	SCREW, DRIVE, RH, RoHS, 2 x .188	66	
	-	2	2	2-18032-5	SCR, SET, FLT PNT, M5 X 20.0	61	
	-	1	1	2079383-4	SCR, BHSC, RoHS (M4 X 8)	60	
	-	1	1	5-18022-5	SCR, HEX HD CAP, M4 X 6.0	59	
	-	1	1	462427-2	FINGER, FEED	56	
	-	4	4	2168400-1	SHCS, LOW HEAD, RoHS, M4 X 12	54	
	-	2	2	2168083-8	SCR, SKT HD CAP, RoHS, M4 X 16	53	
	-	1	1	18023-9	SCR, SKT HD CAP M4 X 6.0	49	
	-	1	1	1-1803583-9	APPLICATOR BASIC ASSEMBLY, SF	46	
	-	1	1	1803515-1	RAM ASSEMBLY, SF ATLANTIC	44	
△9	-	1	1	462433-7	SUPPORT, INSULATION	43	
△9	-	1	1	462433-6	SUPPORT, INSULATION	42	
	-	1	1	1803602-1	SCR, BHSC, RoHS (M8 X 25)	41	
	-	2	2	5-22278-1	SPRING, COMPRESSION	33	
	-	2	2	1-2168083-4	SCR, SKT HD CAP, RoHS, M4 X 5	30	
	-	1	1	2161336-2	PLATE, REAR STRIP GUIDE	29	
	-	2	2	22281-9	SPRING, COMPRESSION	27	
	-	1	1	356835-1	LEVER, DRAG RELEASE	26	
	-	1	1	240792-1	DRAG, TERMINAL	25	
	-	1	1	684042-4	GUIDE, STRIP, FRONT	24	
	-	1	1	980371-4	SCR, SKT HD SHLDR 5.0 DIA X 6.0	23	
△9	△6	-	1	1	462431-6	WIRE FUNNEL	22
	-	1	1	2168083-2	SCR, SKT HD CAP, RoHS, M4 X 8.0	21	
	-	1	1	1-18028-2	WASHER, FLAT, REG M4	20	
	-	1	1	2119533-1	STRIPPER, SIDE FEED	19	
	-	1	1	463460-3	HOLD DOWN, TERMINAL	18	
△1	-	1	1	469542-3	REAR FLOATING SHEAR	17	
	-	4	4	1-2168083-1	SCR, SKT HD CAP, RoHS, M3 X 6	16	
△1	-	1	1	2161335-2	SHEAR PLATE, REAR	15	
	-	1	1	2119862-2	SHEAR HOLDER, REAR	14	
△1	-	1	1	2280441-1	INSERT, SHEAR	13	
	-	1	1	3-22280-3	SPRING, COMPRESSION	12	
	-	1	1	356885-4	STOP, SHEAR	11	
△9	-	1	1	462843-6	TERMINAL SUPPORT	10	
△9	-	1	1	462843-5	TERMINAL SUPPORT	9	
△1	2	1	1	464291-4	ANVIL, SAND-BLASTED 22-18	8	
△5	-	1	1	803925-2	GUIDE, CARRIER SCRAP	7	
	-	1	1	2-690468-5	DEPRESSOR SHEAR, REAR	6	
△9	△6	-	1	1	462431-1	WIRE FUNNEL	5
	-	1	1	238011-1	BLOCK, CRIMPER SPACER	4	
△1	1	2	1	464290-1	CRIMPER, SEMI-FLAT 22-18	1	

DIMENSIONS:		TOLERANCES UNLESS OTHERWISE SPECIFIED:		OWN: B. WEAVER 21OCT2011		TE Connectivity	
mm		0 PLC ±		CHK: G. HOFNER 21OCT2011		Harrisburg, PA 17105-3608	
		1 PLC ±		APVD: T. ELBIN 21OCT2011		NAME: OCEAN SIDE FEED APPLICATOR	
		2 PLC ±		PRODUCT SPEC		SIZE: A1	
		3 PLC ±		APPLICATION SPEC		CAGE CODE: 00779	
		4 PLC ±		WEIGHT		DRAWING NO: 2151034	
MATERIAL:		FINISH:		RESTRICTED TO:		SCALE: 1:1	
Customer Accessible Production Drawing				SHEET 1 OF 4		REV J	

ATLANTIC VERSION
Shown on sheets 1 of 4 & 2 of 4
(Pacific version shown on sheets 3 of 4 & 4 of 4)

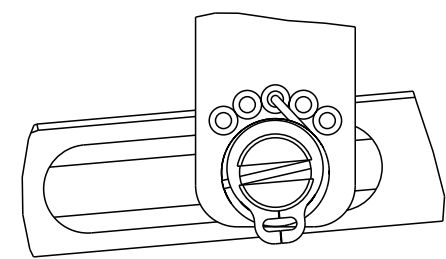
LOC	DIST	REVISIONS					
A	66	P	LY#	DESCRIPTION	DATE	OWN	APVD
		-		SEE SHEET 1	-	-	-

FEED TYPE PNEUMATIC



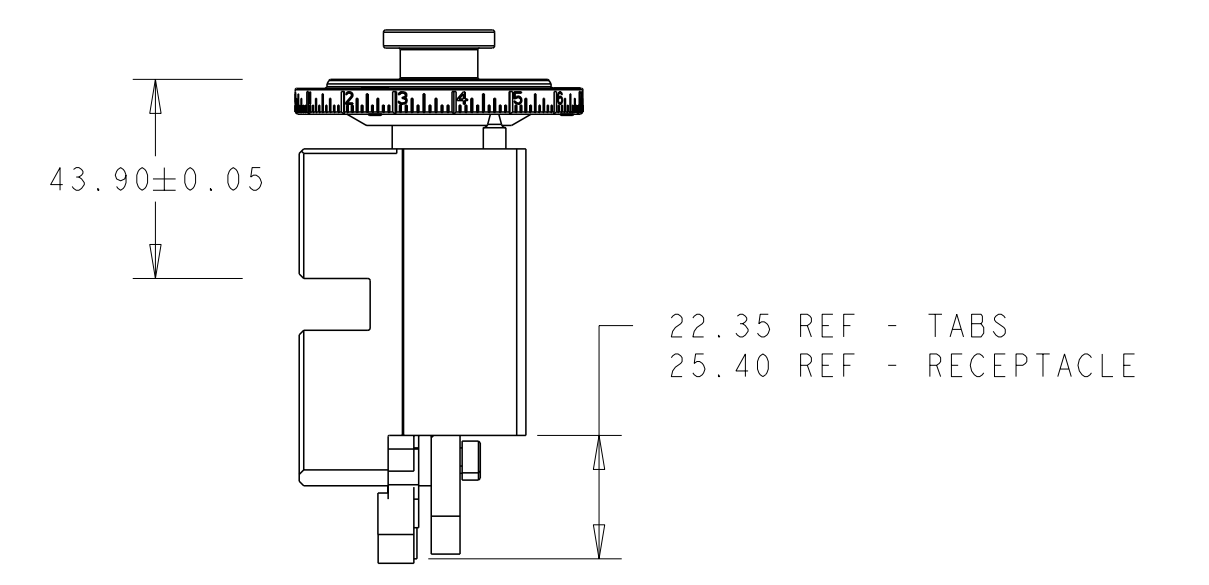
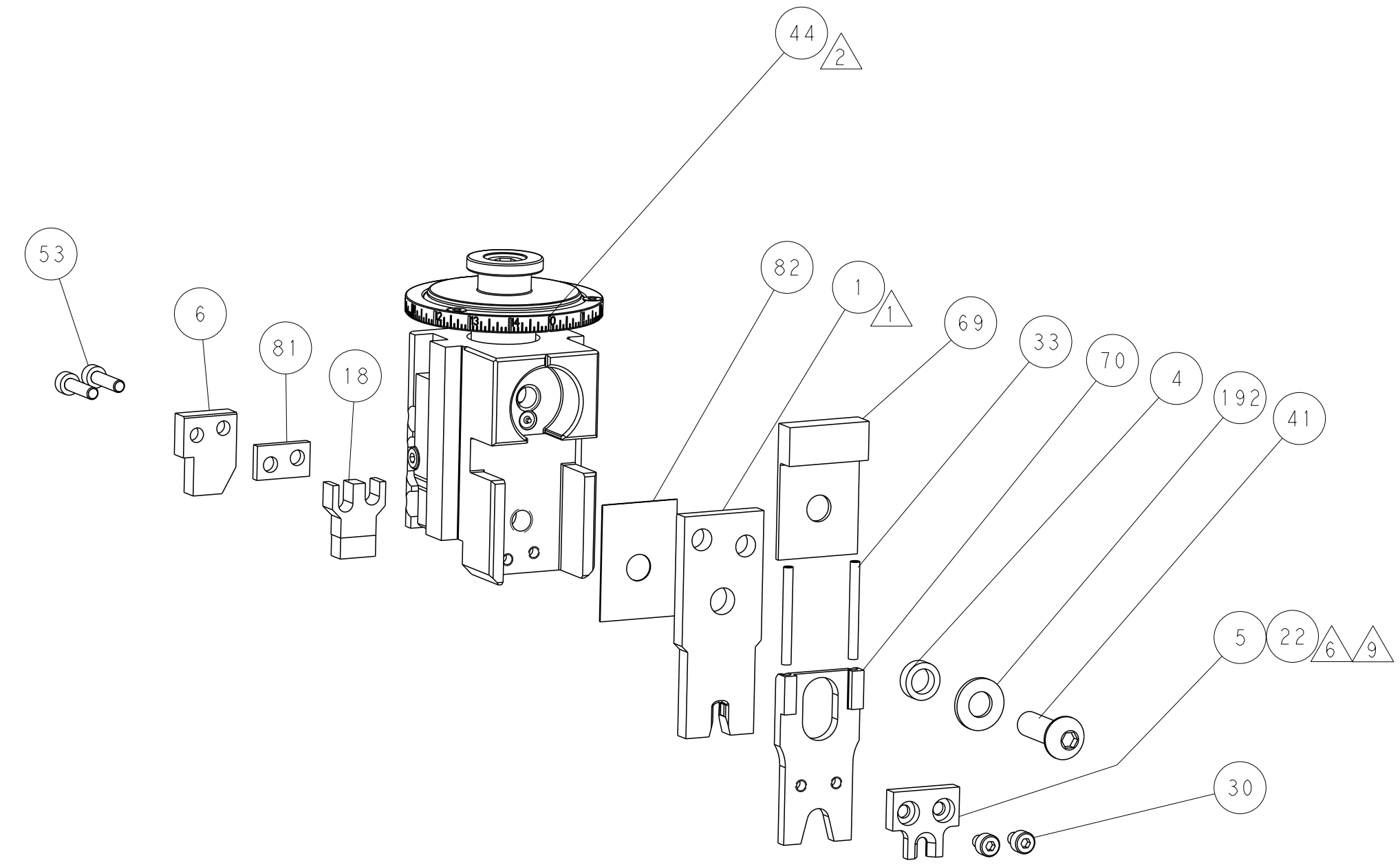
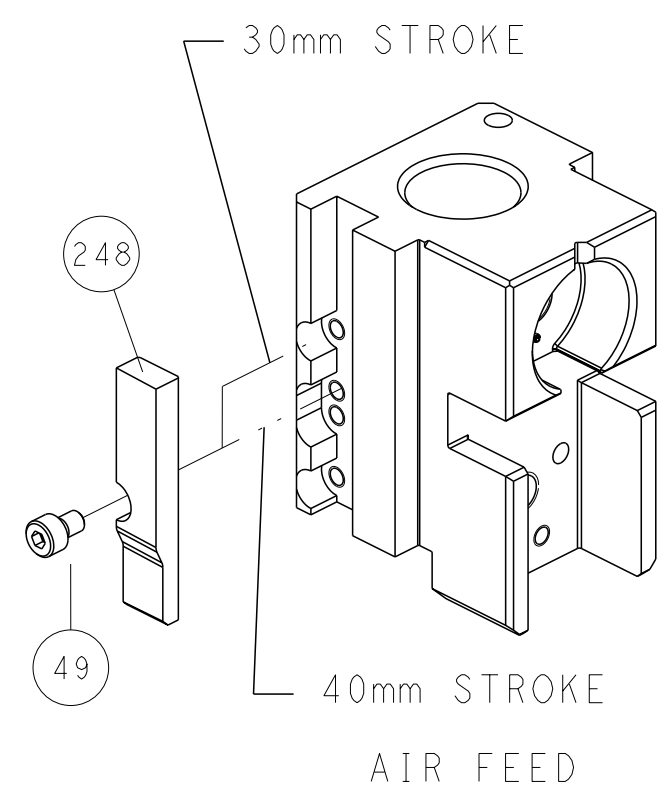
SEE DETAIL A

FEED SPRING SETTING POSITION (SHOWN FROM REAR SIDE)

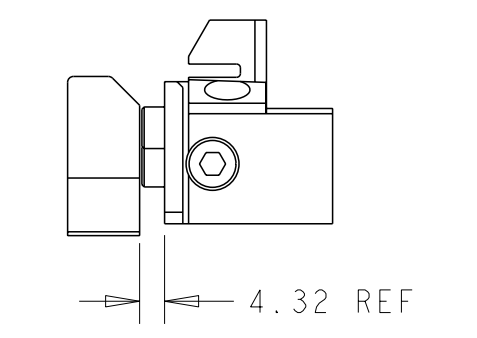


DETAIL A

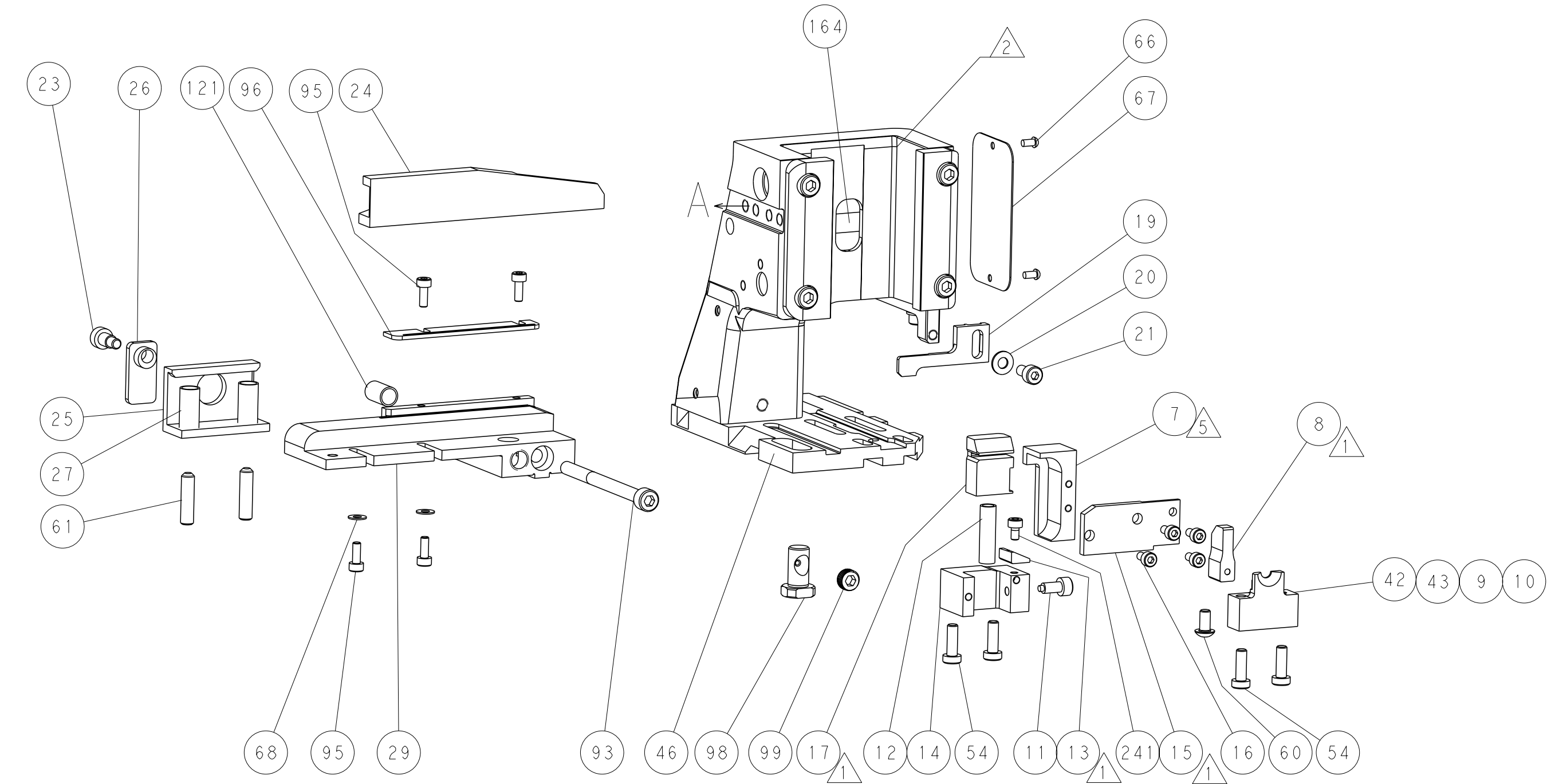
CAM POSITIONS



RAM & HOLD-DOWN SET-UP



LOWER TOOLING SET-UP



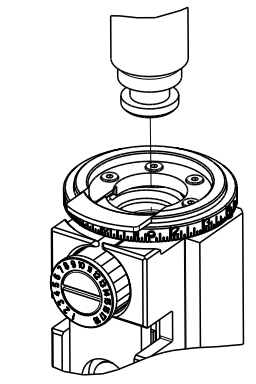
ATLANTIC VERSION
 Shown on sheets 1 of 4 & 2 of 4
 (Pacific version shown on sheets 3 of 4 & 4 of 4)

<small>THIS DRAWING IS A CONTROLLED DOCUMENT FOR TYCO ELECTRONICS CORPORATION. IT IS SUBJECT TO CHANGE AND TO CONTROLING ENGINEERING DISCRETION SHOULD BE CONTACTED FOR THE LATEST REVISION.</small>		OWN: B. WEAVER 21OCT2011 CHK: G. HOFNER 21OCT2011 APVD: T. ELBIN 21OCT2011	TE Connectivity Harrisburg, PA 17105-3608
DIMENSIONS: mm TOLERANCES UNLESS OTHERWISE SPECIFIED: 0 PLC ± 1 PLC ± 2 PLC ± 3 PLC ± 4 PLC ± ANGLES FINISH *		NAME: OCEAN SIDE FEED APPLICATOR SIZE: A1 CAGE CODE: 00779 DRAWING NO: 2151034 WEIGHT: - SCALE: 1:1	RESTRICTED TO: - SHEET 2 OF 4 REV J
MATERIAL: - FINISH: -		Customer Accessible Production Drawing	

THIS DRAWING IS UNPUBLISHED. RELEASED FOR PUBLICATION 2011
 BY TYCO ELECTRONICS CORPORATION. ALL RIGHTS RESERVED.

PART NUMBER	REVISION	DESCRIPTION	FEED TYPE
2-2151034-2	J	FINE CRIMP HEIGHT ADJUST	PNEUMATIC
7-2151034-7	A	CRIMP TOOLING KIT	-

PACIFIC VERSION TERMINATOR
 INTERFACE ADAPTER



APPLICATOR DATA		
CRIMP	SIZE	TYPE
WIRE	.176 [4.47 mm]	0
INSUL	-	-

APPLICATOR INSTRUCTIONS
 408-35042

TERMINAL DATA: TE TERMINAL TE CRIMP SPECIFICATION

TERMINAL NAME: FULLY INSULATED FASTON	
WIRE STRIP LENGTH .265-.297 IN [6.73-7.54 mm]	INSULATION DIAMETER RANGE Ø
TERMINAL APPLICATION SPECIFICATION 114-2123	
TERMINALS APPLIED	
TE TERMINAL	TE TERMINAL
2-520102-1	5-520183-2
2-520102-2	9-520183-2
2-520181-2	2-520193-2
2-520181-4	9-520193-2
5-520181-2	2-521102-2
9-520181-2	2-521104-2
2-520183-2	2-521308-2
2-520183-4	2-521406-2

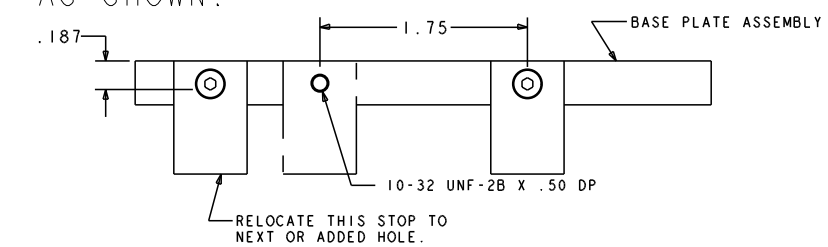
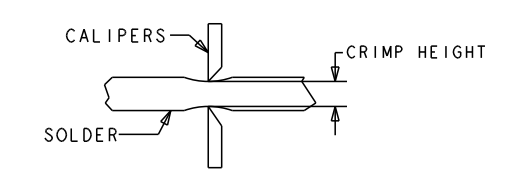
GROUP 1 8 9 GROUP 2 8 9

WIRE SIZE	CRIMP HEIGHT INCH [mm]	CRIMP HEIGHT REFERENCE SETTING	Ø SOLDER
18, (2)22, or (1)20+(1)22	0.070+/-0.002 [1.78+/-0.05]	6.4	.125 IN [3.175mm]
20 or 22	0.065+/-0.002 [1.65+/-0.05]	8.3	.125 IN [3.175mm]

***WARNING**
 ON INSTALLATION, SET WIRE DISC TO CRIMP HEIGHT REFERENCE SETTING FOR LARGEST WIRE SIZE. CRIMP HEIGHT REFERENCE SETTINGS GREATER THAN THE VALUE SHOWN MAY CAUSE DAMAGE TO THE CRIMP TOOLING, REFER TO THE INSTRUCTION SHEET FOR PROPER SETUP AND ADJUSTMENTS.

- 1 RECOMMENDED SPARE PARTS
- 2 REFER TO SUPPLIED INSTRUCTION SHEET FOR CLEANING, LUBRICATION AND STORAGE OF APPLICATOR.
- 3 CRIMP HEIGHT REFERENCE SETTING WAS THE SETTING USED WHEN THE APPLICATOR WAS QUALIFIED AT THE FACTORY. ADJUSTMENT MAY BE NECESSARY WHEN RUNNING APPLICATOR IN THE FIELD.
- 4 TO CONVERT THE APPLICATOR TO A NON-CARRIER CUTTING STYLE, REMOVE ITEM 13 AND ATTACH TO THE LOCATION ON THE BACK SIDE OF THE HOUSING. REFER TO INSTRUCTION SHEET FOR ADDITIONAL INFORMATION.
- 5 ITEM 7 MUST BE REMOVED IF APPLICATOR IS USED ON BENCH MACHINE.
- 6 ITEMS 5 AND 9 OR ITEMS 10 AND 22 ARE REQUIRED WHEN RUNNING ON A LEADMAKER. ITEM 42 OR 43 REQUIRED WHEN RUNNING ON A BENCH MACHINE.
- 7 FEED ADJUSTMENT MAY BE REQUIRED WHEN SWITCHING TERMINALS.
- 8 GROUP 1 TERMINALS: Ø.135 IN [3.43mm] MAX INSULATION
 GROUP 2 TERMINALS: Ø.200 IN [5.08mm] MAX INSULATION
- 9 USE ITEMS 5, 9, OR 42 WITH GROUP 1 TERMINALS
 USE ITEMS 10, 22, OR 43 WITH GROUP 2 TERMINALS
- 10 TO CHECK CRIMP HEIGHT, CRIMP SOLDER (Ø.12 IN [3.05mm] 60/40 SOLID CORE) AND MEASURE AT CENTER OF SLUG.
- 11 IT MAY BE NECESSARY TO MODIFY THE T-TERMINATING/K-PRESS BASE PLATE BEFORE USE BY ADDING A 10-32 HOLE TO RELOCATE THE FORWARD STOP AS SHOWN.
- 12 ITEMS 253 AND 255 MUST BE INSTALLED IN THE G-TERMINATING UNIT CHIP RELIEF HOLE BEFORE INSTALLING THE APPLICATOR.
- 13 ITEM 257, REQUIRED IF APPLICATOR IS RUN ON T-TERMINATING UNIT/K-PRESS. GUARD, ITEM 256, REQUIRED IF APPLICATOR IS BEING USED ON G-TERMINATOR.

- 14 TERMINAL PITCH NOT COMPATIBLE WITH MECHANICAL FEED
- 15 HOLD DOWN BRACKET 803931-1 IS NEEDED IN ORDER TO BE USED WITH K-PRESS
- 16. UNLESS SPECIFIED OTHERWISE TORQUE VALUES SHALL BE USED PER DOCUMENT, 101-35000.



LOC	DIST	REVISIONS					
A	66	P	LYR	DESCRIPTION	DATE	OWN	APVD
		-		SEE SHEET 1			
1	REF	462992-5		GUARD ASSY			257
1	REF	679532-1		INSERT, GUARD			256
1	1	189728-1		BRACKET, SPACER			255
1	1	568681-1		SPACER, BASE PLATE			253
1	1	18023-1		SCR, SKT HD CAP M3 X 5.0			241
1	1	2844940-2		AIR FEED MODULE			238
1	1	1-18028-0		WASHER, FLAT, REG M8			192
REF	994970-2			COUNTER, MAGNETIC			164
1	1	2119641-2		FEED CAM, AIR FEED			151
1	1	2079383-8		SCR, BHSC, RoHS (M4 X 16)			144
4	2168400-5			SHCS, LOW HEAD, RoHS, M4 X 20			143
1	2-1803583-0			APPLICATOR BASIC ASSEMBLY, SF			141
1	1803516-1			RAM ASSEMBLY, SF PACIFIC			140
1	1-22281-8			SPRING, COMPRESSION			121
1	2844908-1			SCREW, LOCKING			99
1	2844907-1			POST, LOCKING			98
1	1-690438-0			FRONT STRIP GUIDE			96
4	2168083-1			SCR, SKT HD CAP, RoHS, M3 X 8.0			95
1	2168083-6			SCR, SKT HD CAP, RoHS, M5 X 65			93
1	455888-4			SPACER, CRIMPER			82
1	240641-6			SPACER			81
1	1803607-3			DOCUMENTATION PACKAGE			71
1	2161332-2			DEPRESSOR, WIRE FUNNEL			70
1	2161331-1			SPACER, WIRE FUNNEL DEPRESSOR			69
2	1-18028-4			WASHER, FLAT, REG M3			68
1	2119740-1			TAG, IDENTIFICATION			67
2	2168078-1			SCREW, DRIVE, RH, RoHS, 2 x .188			66
2	2-18032-5			SCR, SET, FLT PNT, M5 X 20.0			61
1	5-18022-5			SCR, HEX HD CAP, M4 X 6.0			59
1	462427-2			FINGER, FEED			56
2	2168083-8			SCR, SKT HD CAP, RoHS, M4 X 16			53
1	18023-9			SCR, SKT HD CAP M4 X 6.0			49
1	462433-7			SUPPORT, INSULATION			43
1	462433-6			SUPPORT, INSULATION			42
1	1803602-1			SCR, BHSC, RoHS (M8 X 25)			41
2	5-22278-1			SPRING, COMPRESSION			33
2	1-2168083-4			SCR, SKT HD CAP, RoHS, M4 X 5			30
1	2161336-2			PLATE, REAR STRIP GUIDE			29
2	22281-9			SPRING, COMPRESSION			27
1	356835-1			LEVER, DRAG RELEASE			26
1	240792-1			DRAG, TERMINAL			25
1	684042-4			GUIDE, STRIP, FRONT			24
1	980371-4			SCR, SKT HD SHLDR 5.0 DIA X 6.0			23
1	462431-6			WIRE FUNNEL			22
1	2168083-2			SCR, SKT HD CAP, RoHS, M4 X 8.0			21
1	1-18028-2			WASHER, FLAT, REG M4			20
1	2119533-1			STRIPPER, SIDE FEED			19
1	463460-3			HOLD DOWN, TERMINAL			18
1	469542-3			REAR FLOATING SHEAR			17
4	1-2168083-1			SCR, SKT HD CAP, RoHS, M3 X 6			16
1	2161335-2			SHEAR PLATE, REAR			15
1	2119862-2			SHEAR HOLDER, REAR			14
1	2280441-1			INSERT, SHEAR			13
1	3-22280-3			SPRING, COMPRESSION			12
1	356885-4			STOP, SHEAR			11
1	462843-6			TERMINAL SUPPORT			10
1	462843-5			TERMINAL SUPPORT			9
1	464291-4			ANVIL, SAND-BLASTED 22-18			8
1	803925-2			GUIDE, CARRIER SCRAP			7
1	2-690468-5			DEPRESSOR SHEAR, REAR			6
1	462431-1			WIRE FUNNEL			5
1	238011-1			BLOCK, CRIMPER SPACER			4
1	464290-1			CRIMPER, SEMI-FLAT 22-18			1

DIMENSIONS:		TOLERANCES UNLESS OTHERWISE SPECIFIED:		MATERIAL:	
mm	0 PLC ±	1 PLC ±	2 PLC ±	3 PLC ±	4 PLC ±
	ANGLES FINISH	FINISH			

OWN	B. WEAVER	21OCT2011
CHK	G. HOFENER	21OCT2011
APVD	T. ELBIN	21OCT2011

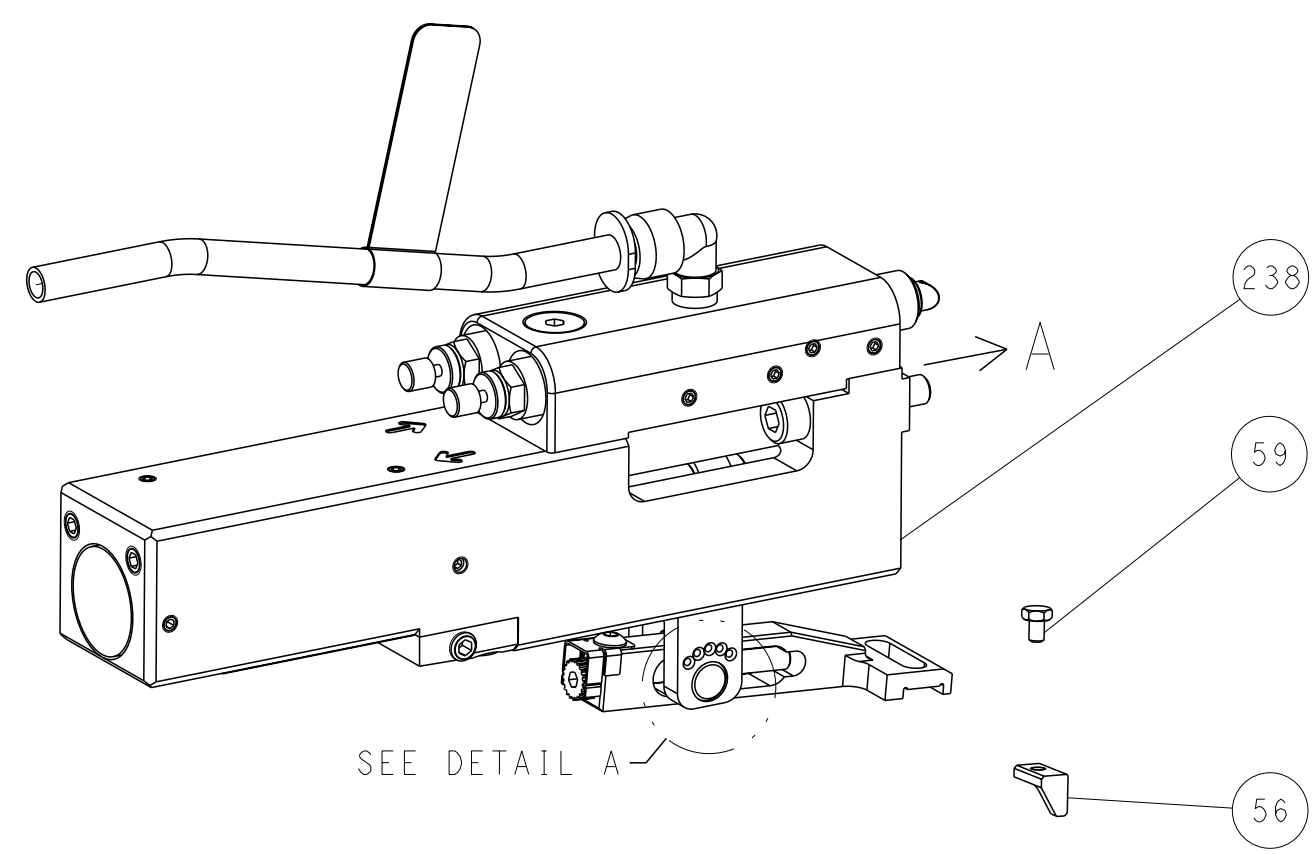
NAME	OCEAN SIDE FEED APPLICATOR	
SIZE	CAGE CODE	DRAWING NO
A1	00779	2151034

Customer Accessible Production Drawing SCALE 1:1 SHEET 3 of 4 REV J

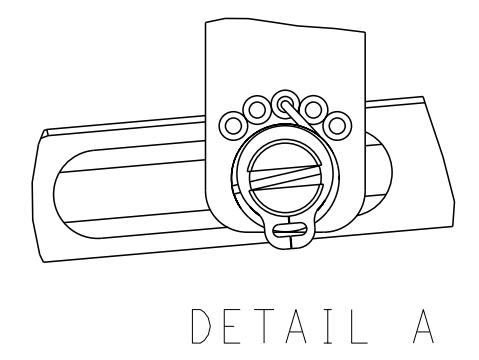
PACIFIC VERSION
 Shown on sheets 3 of 4 & 4 of 4
 (Atlantic version shown on sheets 1 of 4 & 2 of 4)

LOC	DIST	REVISIONS			
A	66	REV	DATE	OWN	APVD
-	-	SEE SHEET 1	-	-	-

FEED TYPE PNEUMATIC

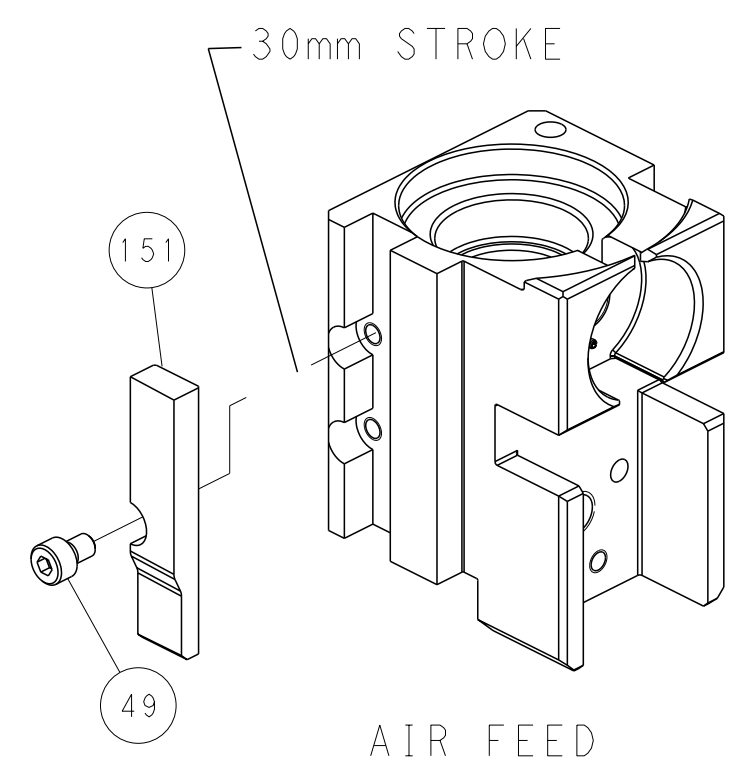


FEED SPRING SETTING POSITION (SHOWN FROM REAR SIDE)

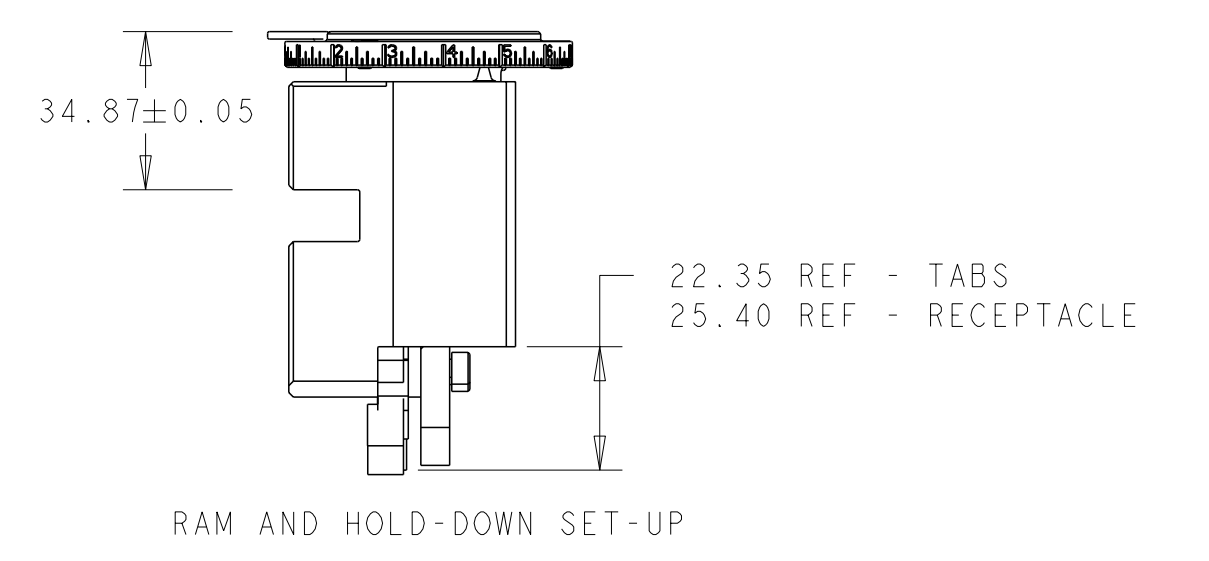
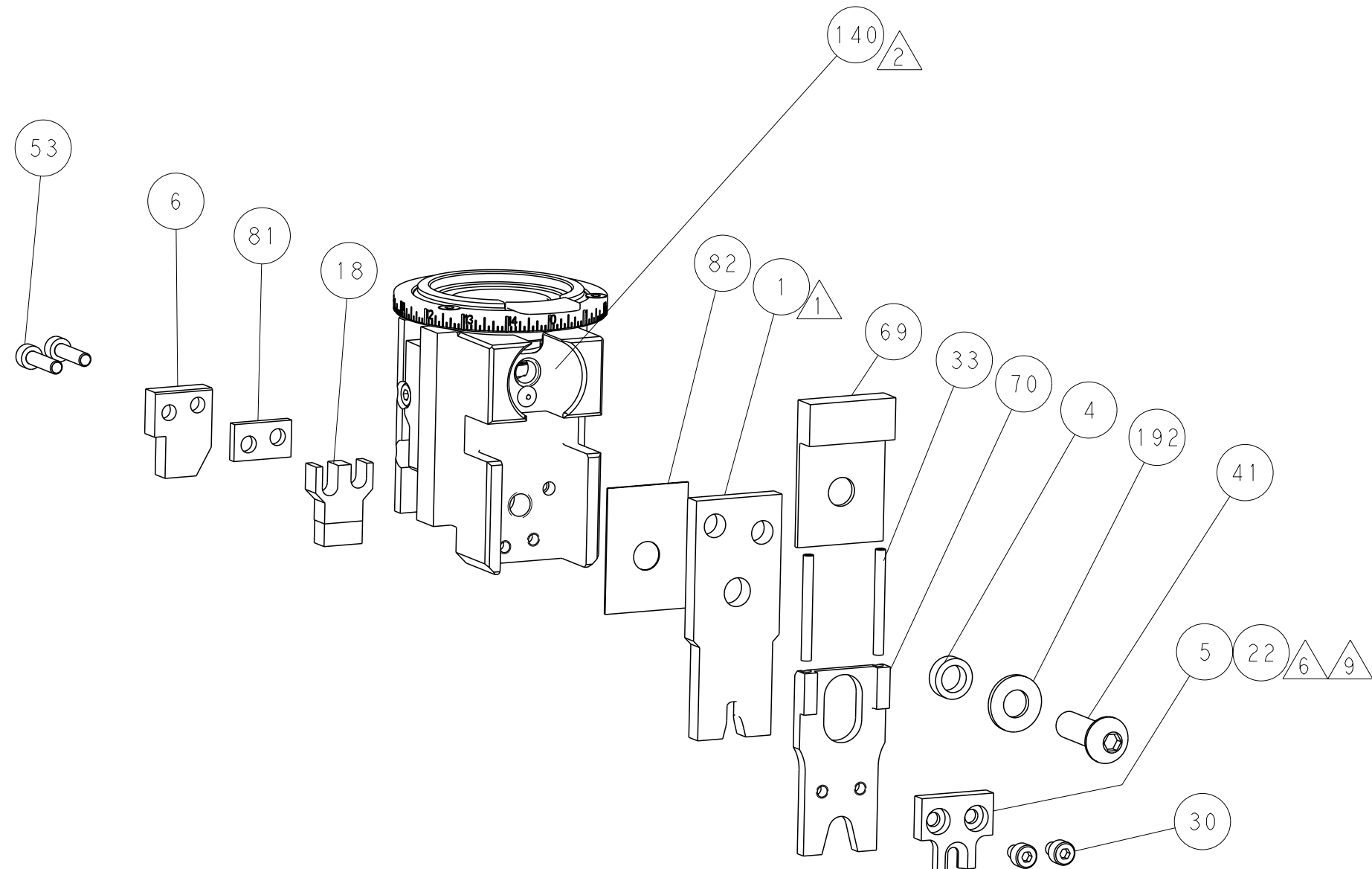


DETAIL A

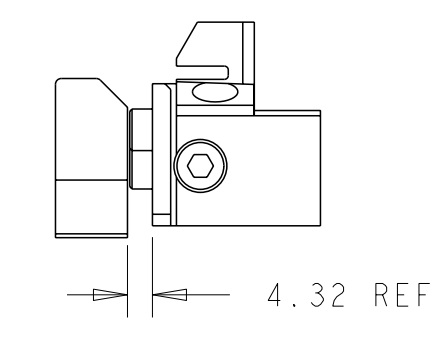
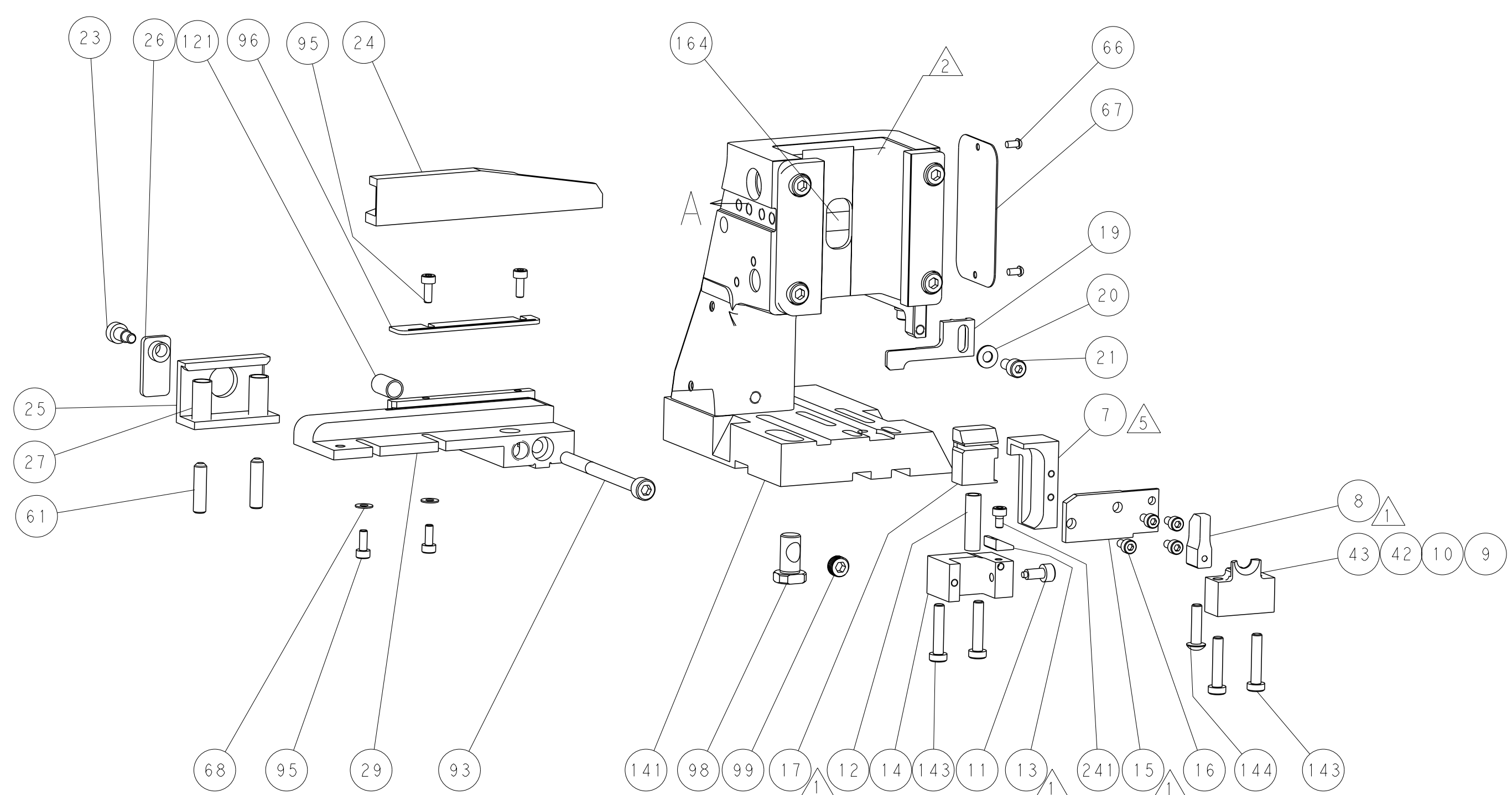
CAM POSITION



AIR FEED



RAM AND HOLD-DOWN SET-UP



LOWER TOOLING SET-UP

PACIFIC VERSION
 Shown on sheets 3 of 4 & 4 of 4
 (Atlantic version shown on sheets 1 of 4 & 2 of 4)

<small>THIS DRAWING IS A CONTROLLED DOCUMENT FOR TYCO ELECTRONICS CORPORATION. IT IS SUBJECT TO CHANGE AND THE USER'S RESPONSIBILITY TO VERIFY THE DIMENSIONS SHOWN BY CONTACTING THE DESIGNATION.</small>		OWN: B. WEAVER CHK: G. HOFNER APVD: T. ELBIN	21OCT2011 21OCT2011 21OCT2011	NAME: OCEAN SIDE FEED APPLICATOR SIZE: A1 CAGE CODE: 00779 DRAWING NO: C=2151034	RESTRICTED TO: - SCALE: 1:1 SHEET: 4 of 4 REV: J
DIMENSIONS: mm TOLERANCES UNLESS OTHERWISE SPECIFIED: 0 PLC ± 1 PLC ± 2 PLC ± 3 PLC ± 4 PLC ± ANGLES FINISH *		MATERIAL: - WEIGHT: -		Customer Accessible Production Drawing	