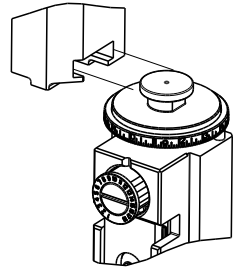


8		7	
THIS DRAWING IS UNPUBLISHED.		RELEASED FOR PUBLICATION	
20		20	
BY TYCO ELECTRONICS CORPORATION. ALL RIGHTS RESERVED.			
PART NUMBER	REVISION	DESCRIPTION	FEED TYPE
2150336-2	C	FINE CRIMP HEIGHT ADJUST	PNEUMATIC
7-2150336-2	C	PNEUMATIC AND CRIMP TOOLING KIT	PNEUMATIC
7-2150336-7	B	CRIMP TOOLING KIT	-

ATLANTIC VERSION TERMINATOR  
INTERFACE ADAPTER



APPLICATOR DATA		
CRIMP	SIZE	TYPE
WIRE	2.54 mm [.100]	F
INSUL	4.57 mm [.180]	SP
APPL INSTRUCTIONS 408-35043		

TERMINAL DATA: TE TERMINAL		TE CRIMP SPECIFICATION	
TERMINAL NAME: 6.3 SRS FLAG F-SPRING LIF RECEPTACLE			
WIRE STRIP LENGTH 4.30-5.30 mm [.169-.209 IN]		INSULATION DIAMETER RANGE Ø2.70-3.80 mm [.106-.150 IN]	
TERMINAL APPLICATION SPECIFICATION			
TERMINALS APPLIED			
TE TERMINAL	TE TERMINAL	TE TERMINAL	TE TERMINAL
2178439-1			

WIRE SIZE		CRIMP HEIGHT mm [INCH]		CRIMP HEIGHT REFERENCE SETTING
12 AWG		1.96+/-0.05 [.077+/- .002]		5.1
14 AWG		1.85+/-0.05 [.073+/- .002]		6.4
16 AWG		1.64+/-0.05 [.065+/- .002]		8.5



- RECOMMENDED SPARE PARTS
- REFER TO SUPPLIED INSTRUCTION SHEET FOR CLEANING, LUBRICATION AND STORAGE OF APPLICATOR.
- APPLY PART NUMBER 2-23419-6 LOCTITE TO THREADS OF ITEM 242.  
APPLY PART NUMBER 1-23419-5 LOCTITE TO THRREADS OF ITEM 50.
- CRIMP HEIGHT REFERENCE SETTING WAS THE SETTING USED WHEN THE APPLICATOR WAS QUALIFIED AT THE FACTORY. ADJUSTMENT MAY BE NECESSARY WHEN RUNNING APPLICATOR IN THE FIELD.
- TERMINAL LUBRICANT IS RECOMMENDED.
6. UNLESS SPECIFIED OTHERWISE TORQUE VALUES SHALL BE USED PER DOCUMENT, 101-35000.
- TERMINAL DESIGN IS NOT COMPATIBLE WITH SERVO FEED AND MECHANICAL FEED.

**\*WARNING**  
ON INSTALLATION, SET WIRE DISC TO CRIMP HEIGHT REFERENCE SETTING FOR LARGEST WIRE SIZE. CRIMP HEIGHT REFERENCE SETTINGS GREATER THAN THE VALUE SHOWN MAY CAUSE DAMAGE TO THE CRIMP TOOLING. REFER TO THE INSTRUCTION SHEET FOR PROPER SETUP AND ADJUSTMENTS.

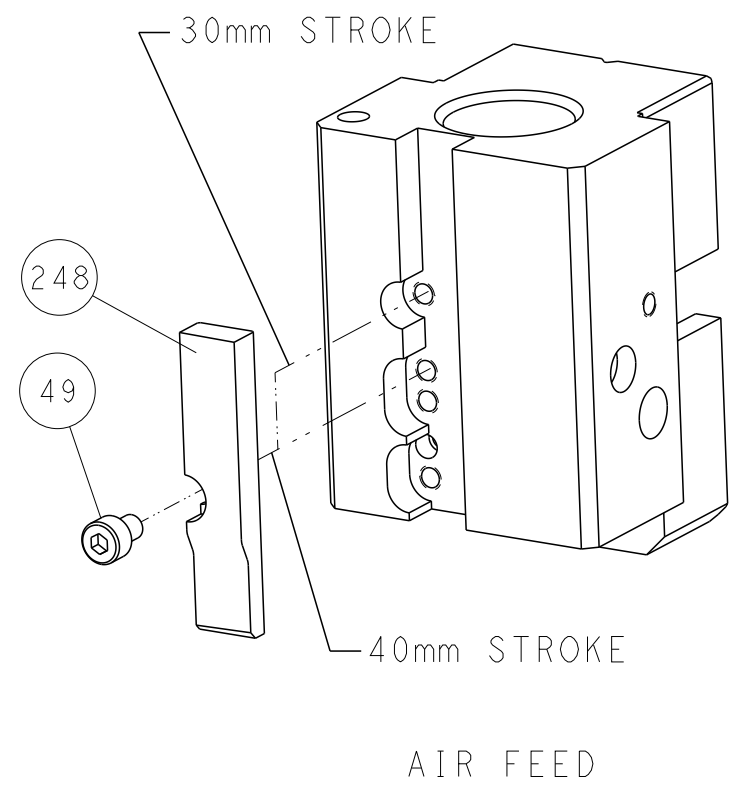
2		I					
LOC	DIST	REVISIONS					
A	66	P	LTR	DESCRIPTION	DATE	DWN	APVD
			A1	ECR-15-004977	30MAR2015	JH	JT
			A2	ECR-15-006528	28APR2015	RS	LZ
			B	ECR-15-013159	06SEP2015	YY	KZ
			C	ECR-23-192677	15NOV2023	JWC	TE

	-	1	1	2119641-1	FEED CAM, AIR FEED	248
	-	1	1	2119082-9	CAM, SNAIL, INSULATION ADJUSTMENT	244
	-	1	1	2079764-1	WASHER, WAVE SPRING, CREST-TO-CREST	243
3	-	1	1	2119083-1	RETAINER, INSULATION DIAL	242
	-	1	1	2844940-4	AIR FEED MODULE	238
	-	1	1	1-18028-0	WASHER, FLAT, REG M8	192
	-	1	1	6-993111-6	PIN, SLOTTED SPRING 3.0 X 14.0	177
	-	1	1	8-22280-7	SPRING, COMPRESSION	176
	-	1	1	1752353-2	GUIDE PIN,HOLDDOWN	175
	-	1	1	1901680-2	GUIDE PIN,HOLDDOWN	174
	-	REF	REF	994970-2	COUNTER, MAGNETIC	164
	-	2	2	1-2168083-1	SCR, SKT HD CAP, RoHS, M3 X 6	147
	-	1	1	455888-4	SPACER, CRIMPER -	82
	-	1	1	1803607-4	DOCUMENTATION PACKAGE	71
	-	2	2	3-18032-3	SCR, SET, FLT PNT, M3 X 20.0	70
	-	1	1	2119740-1	TAG,IDENTIFICATION	67
	-	2	2	2168078-1	SCREW, DRIVE, RH, RoHS, 2 x .188	66
	-	1	1	1803176-1	HOLDDOWN, TERMINAL	65
	-	1	1	2168083-2	SCR, SKT HD CAP, RoHS, M4 X 8.0	60
	-	1	1	5-18022-5	SCR, HEX HD CAP, M4 X 6.0	59
	-	4	4	2168400-1	SHCS, LOW HEAD, RoHS, M4 X 12	57
	-	2	2	1-2168083-0	SCR, SKT HD CAP, RoHS, M4 X 10	56
	-	2	2	5018030-1	NUT, HEX, REG, RoHS, M3	54
	-	2	2	986965-8	NUT, LOCK, HEX, TORQUE (M4)	53
	-	1	1	1-5018030-0	NUT, HEX, REG, RoHS, M3.5	52
3	-	1	1	2063961-1	FEED FINGER	51
	-	1	1	3-1752354-9	STANDOFF,HOLD-DOWN	50
	-	1	1	18023-9	SCR, SKT HD CAP M4 X 6.0	49
	-	1	1	2119655-5	APPLICATOR BASIC ASSEMBLY, EF	46
	-	1	1	1803517-1	RAM ASSEMBLY, EF ATLANTIC	44
	-	1	1	1803602-1	SCR, BHSC, RoHS (M8 X 25)	41
	-	8	8	1-18028-2	WASHER, FLAT, REG M4	33
	-	2	2	1-2168083-2	SCR, SKT HD CAP, RoHS, M4 X 25	31
	-	2	2	1-2168083-0	SCR, SKT HD CAP, RoHS, M4 X 10	29
	-	1	1	1-690455-0	STRIPPER, FRONT CASTING	27
	-	2	2	1-2168083-6	SCR, SKT HD CAP, RoHS, M4 X 35	25
	-	1	1	2161922-1	PLATE, STRIP GUIDE	24
	-	2	2	22281-6	SPRING, COMPRESSION	22
	-	1	1	1633168-2	ARM, STOCK DRAG	21
	-	1	1	1-464452-7	DRAG, STOCK	20
	-	1	1	1803086-2	GUIDE, REAR STRIP	19
	-	1	1	3-1901695-3	STRIP GUIDE, FRONT	18
	-	4	4	1-2079383-1	SCR, BHSC, RoHS (M6 X 12)	17
	-	1	1	1803175-1	SUPPORT, TERMINAL	13
1	-	1	1	461160-3	PLATE, REAR SHEAR	11
	-	2	2	6-240645-1	SPACER, SHEAR PLATE	10
1	-	1	1	455961-5	PLATE, FRONT SHEAR	9
	1	2	1	1803074-8	ANVIL, COMBINATION, END FEED	8
1	-	1	1	1803186-1	BLADE, SLUG	7
	-	-	-	-	-	6
	-	-	-	-	-	5
1	-	1	1	3-238011-5	BLOCK, CRIMPER SPACER	4
	1	2	1	1803108-6	CRIMPER, INSULATION 0	3
	-	1	1	455888-9	SPACER, CRIMPER -	2
1	1	2	1	1-1803015-2	CRIMPER, WIRE	1
	-77-72	-2		PART NO	DESCRIPTION	ITEM NO

THIS DRAWING IS UNPUBLISHED. IT IS SUBJECT TO CHANGE WITHOUT NOTICE. THE USER OF THIS DRAWING SHOULD BE CONTACTED FOR THE LATEST EDITION.		DWN R.KNEPPER 06JUN2013	TE Connectivity Harrisburg, PA 17105-3608	
DIMENSIONS:		CHK T.ELBIN 06JUN2013	NAME	
mm		APVD M.CLIFFORD 06JUN2013	Ocean End Feed Applicator	
TOLERANCES UNLESS OTHERWISE SPECIFIED:		PRODUCT SPEC	SIZE	
0 PLC ±.001		APPLICATION SPEC	CAGE CODE	
1 PLC ±.001		FINISH	DRAWING NO	
2 PLC ±.001		WEIGHT	RESTRICTED TO	
3 PLC ±.001		-	A1 00779	
4 PLC ±.001		-	C=2150336	
MATERIAL		-	Customer Accessible Production Drawing	
FINISH		-	SCALE 1:1	
-		-	SHEET 1 OF 4	
-		-	REV C	

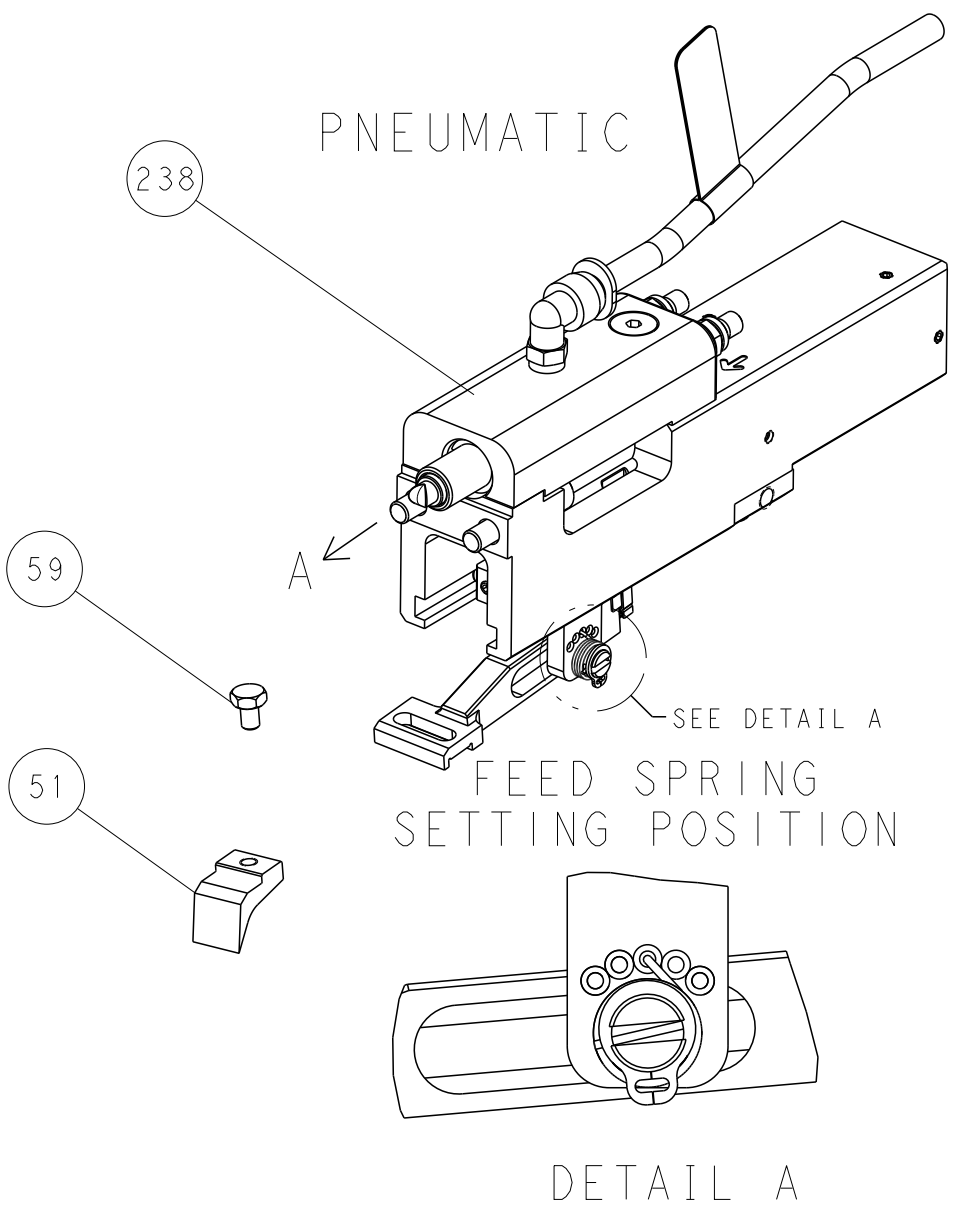
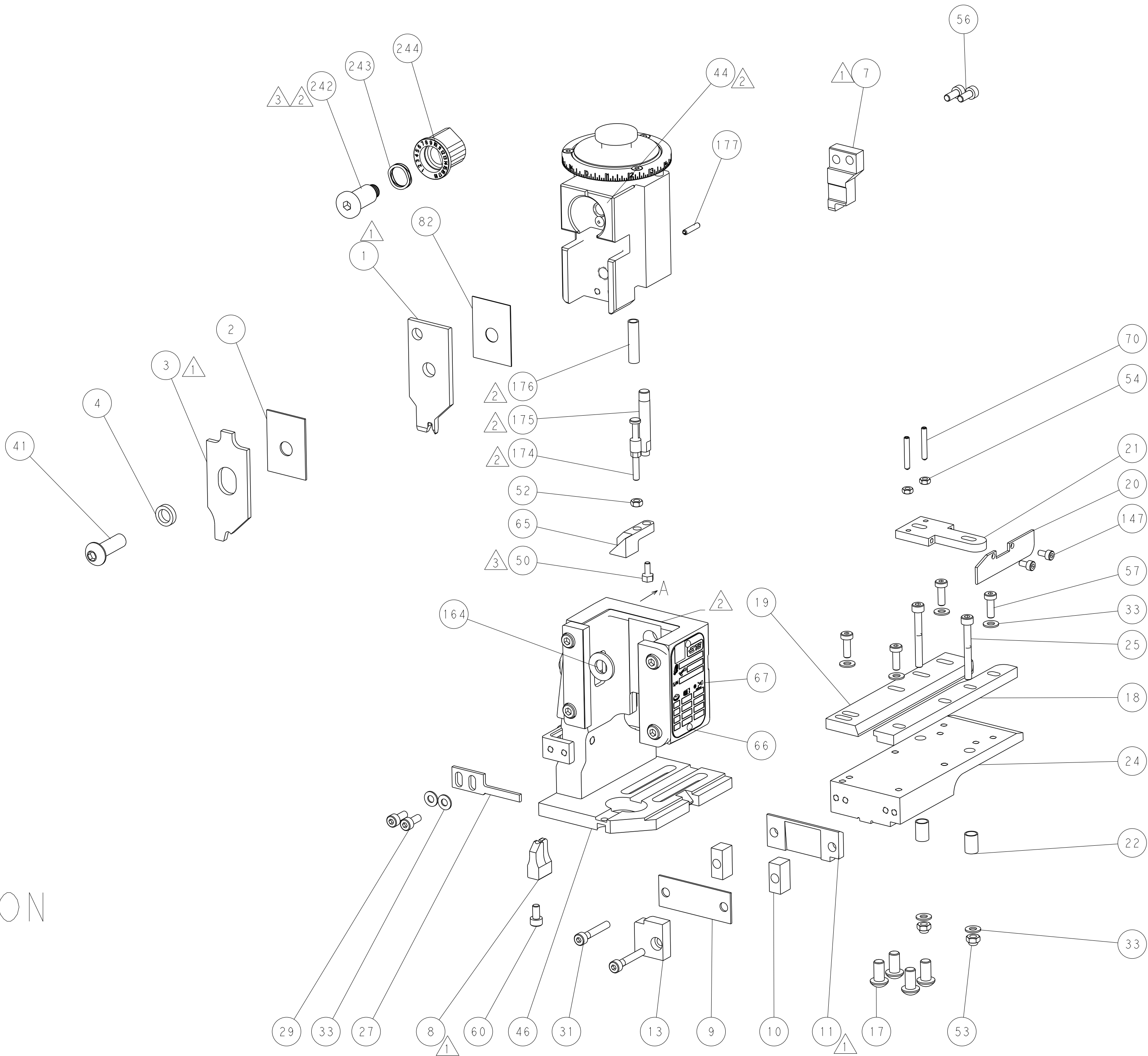
LOC	DIST	REVISIONS				
		P	LTR	DESCRIPTION	DATE	OWN
A	66	-	-	SEE SHEET 1	-	-

CAM POSITION




AIR FEED

FEED TYPE



FEED SPRING  
SETTING POSITION

DETAIL A

THIS DRAWING IS A CONTROLLED DOCUMENT FOR TYCO ELECTRONICS CORPORATION. IT IS SUBJECT TO COMPANY CONTROL AND END-USERING ORGANIZATION SHOULD BE CONTACTED FOR THE LATEST EDITION.		DWN R. KNEPPER 06JUN2013	 TE Connectivity Harrisburg, PA 17105-3608	
CHK T. ELBIN 06JUN2013		APVD M. CLIFFORD 06JUN2013		
DIMENSIONS: mm		TOLERANCES UNLESS OTHERWISE SPECIFIED:		NAME Ocean End Feed Applicator
0 PLC 1 PLC 2 PLC 3 PLC 4 PLC		± ± ± ± ±		SIZE A
MATERIAL -		FINISH -		CAGE CODE 00779
		WEIGHT -		DRAWING NO C-2150336
		Customer Accessible Production Drawing		RESTRICTED TO -
		SCALE 1:1		SHEET 2 OF 4
				REV C