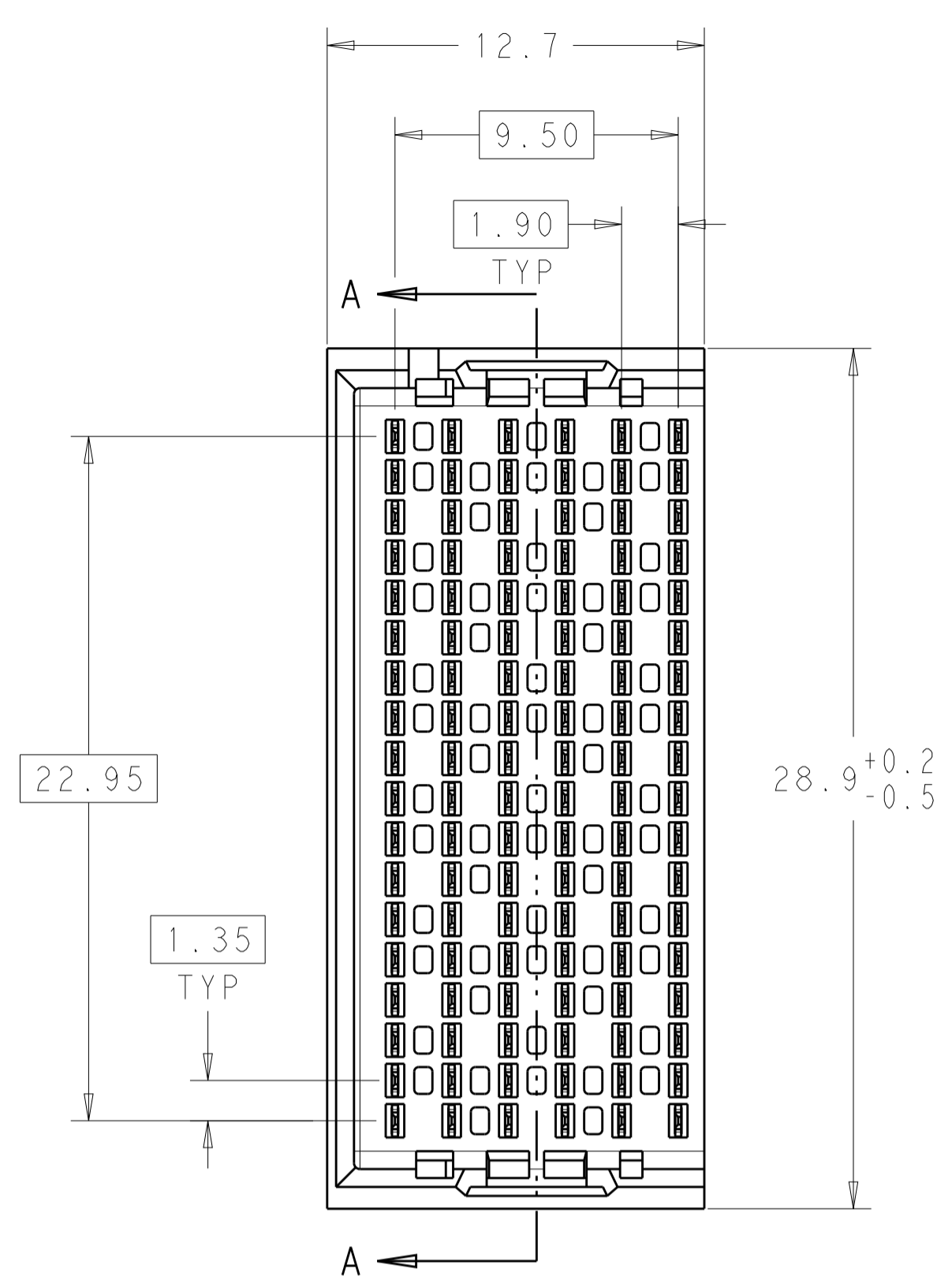
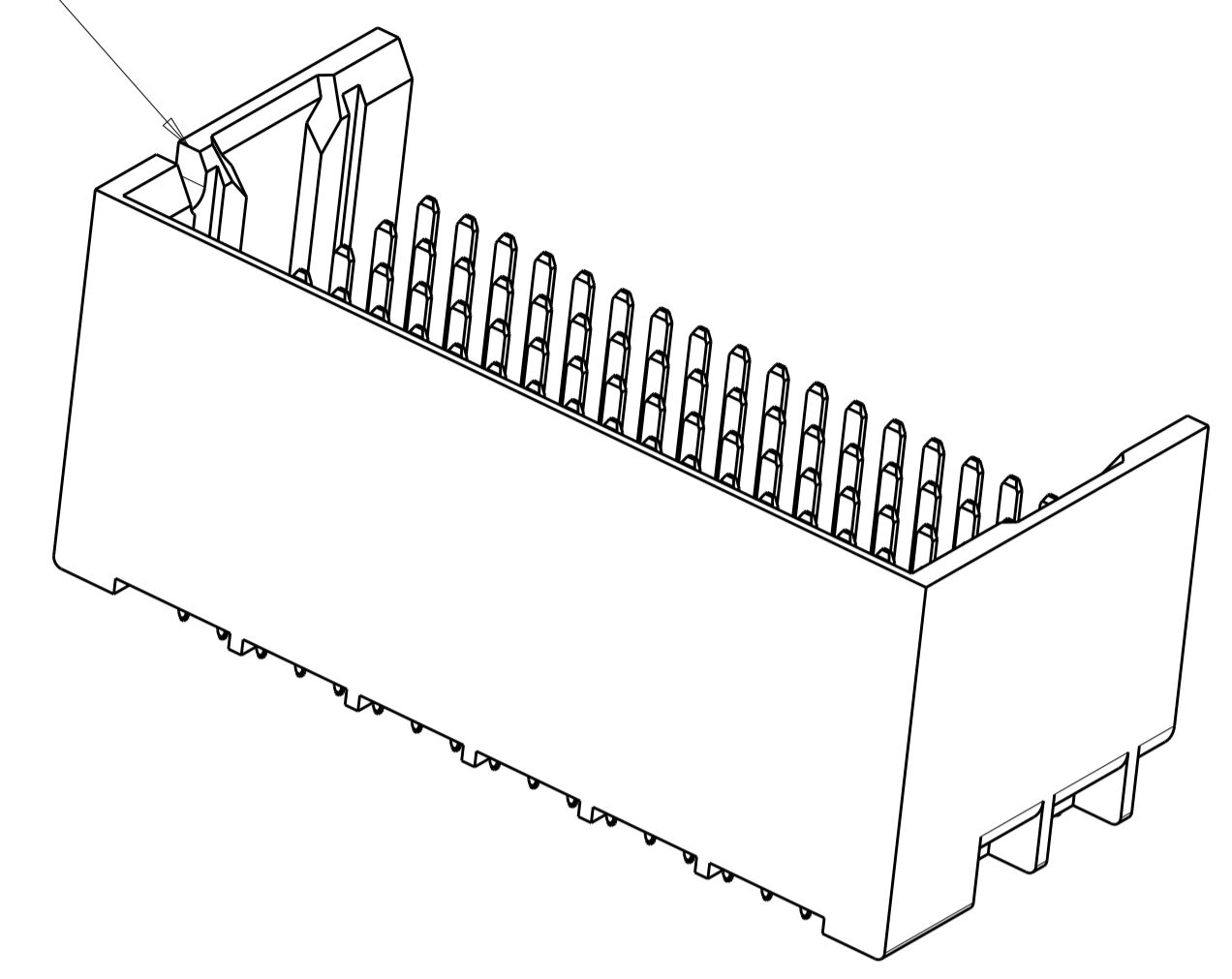


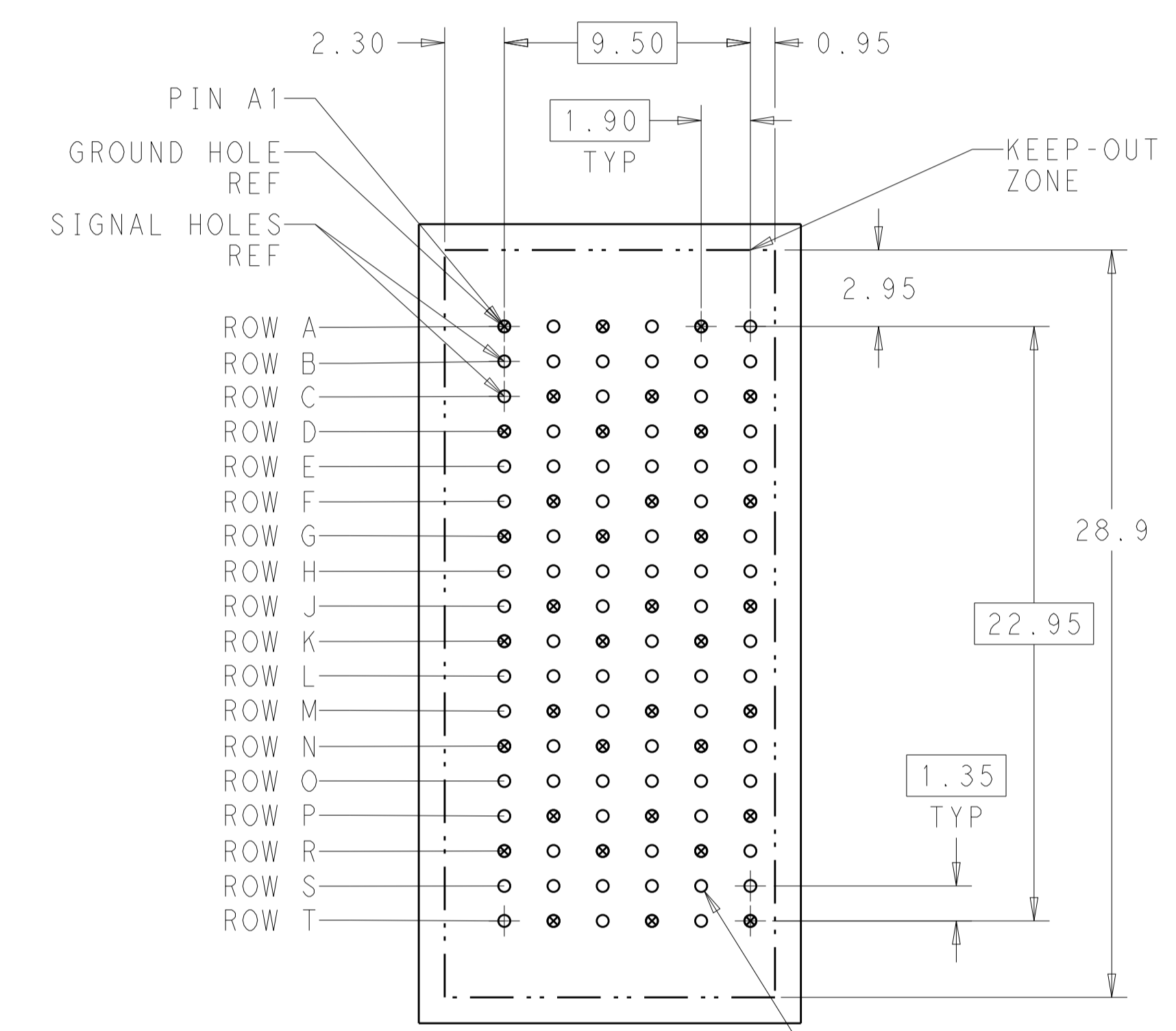
LOC		DIST		REVISIONS				
AD	00	P	LTN	DESCRIPTION	DATE	DWN	APVD	
		A		CREATED BY AUTOMATION PROGRAM	09JUN2011	RKC	JE	



NOTCH DESIGNATES ROW A

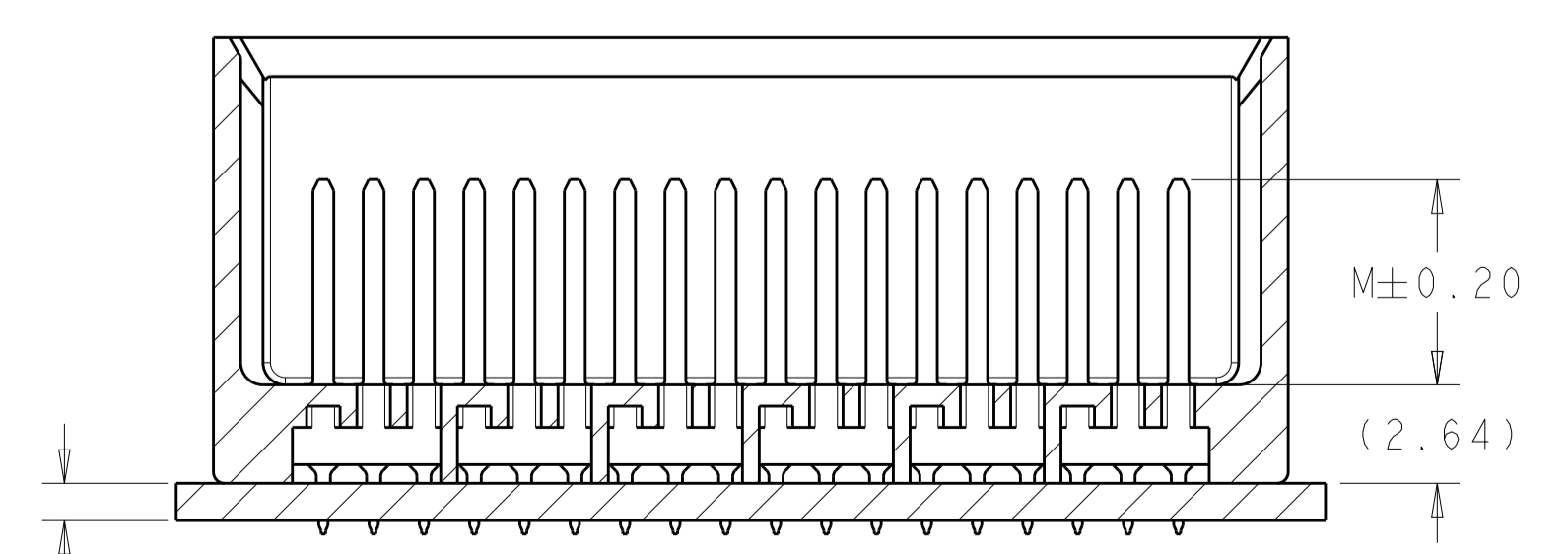
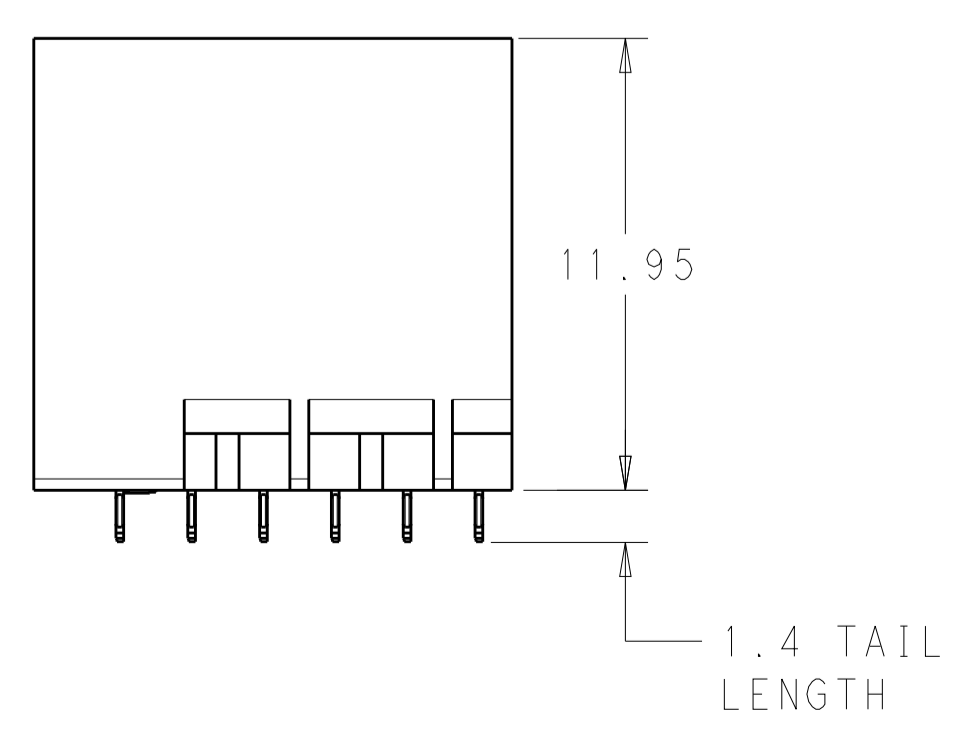


- 1 MATERIAL:
HOUSING: LCP, GLASS FILLED, UL94V-0.
TERMINALS: HIGH PERFORMANCE COPPER ALLOY.
- 2 FINISH:
30μ" MIN GOLD IN CONTACT AREA. SELECTIVE TIN ON PCB TAILS, NICKEL OVERALL.
- 3 FINISH:
30μ" MIN GOLD IN CONTACT AREA. SELECTIVE TIN-LEAD ON PCB TAILS, NICKEL OVERALL.



108X Ø0.46±0.05
PLATED THRU HOLE
108X Ø0.55±0.013
DRILL HOLE
⊕ Ø0.10

UNGUIDED
BACKPLANE HOLE PATTERN
(CONNECTOR SIDE)



1.00
MINIMUM BOARD
THICKNESS

SECTION A-A

THIS DRAWING IS A CONTROLLED DOCUMENT.		DWN R. COELLO 07JUN2011	TE Connectivity
DIMENSIONS: mm		CHK J. EARY 07JUN2011	
TOLERANCES UNLESS OTHERWISE SPECIFIED:		APVD J. EARY 07JUN2011	
0 PLC ± 1 PLC ±0.25 2 PLC ±0.13 3 PLC ± 4 PLC ± ANGLES ±		NAME IMPACT, 6 PAIR, 6 COLUMN, HEADER UNGUIDED, LEFT END WALL SIGNAL MODULE, 0.46 PTH	
MATERIAL SEE TABLE		WEIGHT	SIZE CAGE CODE DRAWING NO. RESTRICTED TO A100779C=2143046
FINISH		CUSTOMER DRAWING	SCALE 5:1 SHEET 1 OF 2 REV A

THIS DRAWING IS UNPUBLISHED. RELEASED FOR PUBLICATION 20
 © COPYRIGHT 20 BY - ALL RIGHTS RESERVED.

LOC		DIST		REVISIONS			
AD	00	P	LTN	DESCRIPTION	DATE	DMN	APVD
-	-	-	-	SEE SHEET 1	-	-	-

FINISH	DIM M	PART NUMBER
	5.5	2143046-6
	4.9	2143046-5
	4.5	2143046-4
	5.5	2143046-3
	4.9	2143046-2
	4.5	2143046-1

REFER TO WWW.TE.COM
FOR PRODUCT AVAILABILITY

THIS DRAWING IS A CONTROLLED DOCUMENT.		DMN R. COELLO 07JUN2011	
DIMENSIONS: mm		CHK J. EARY 07JUN2011	
		APVD J. EARY 07JUN2011	
TOLERANCES UNLESS OTHERWISE SPECIFIED: 0 PLC ± 1 PLC ±0.25 2 PLC ±0.13 3 PLC ± 4 PLC ± ANGLES ±		NAME IMPACT, 6 PAIR, 6 COLUMN, HEADER UNGUIDED, LEFT END WALL SIGNAL MODULE, 0.46 PTH	RESTRICTED TO
MATERIAL -		SIZE A100779	DRAWING NO. C=2143046
FINISH SEE TABLE		WEIGHT -	SCALE 5:1 SHEET 2 OF 2 REV A
CUSTOMER DRAWING			