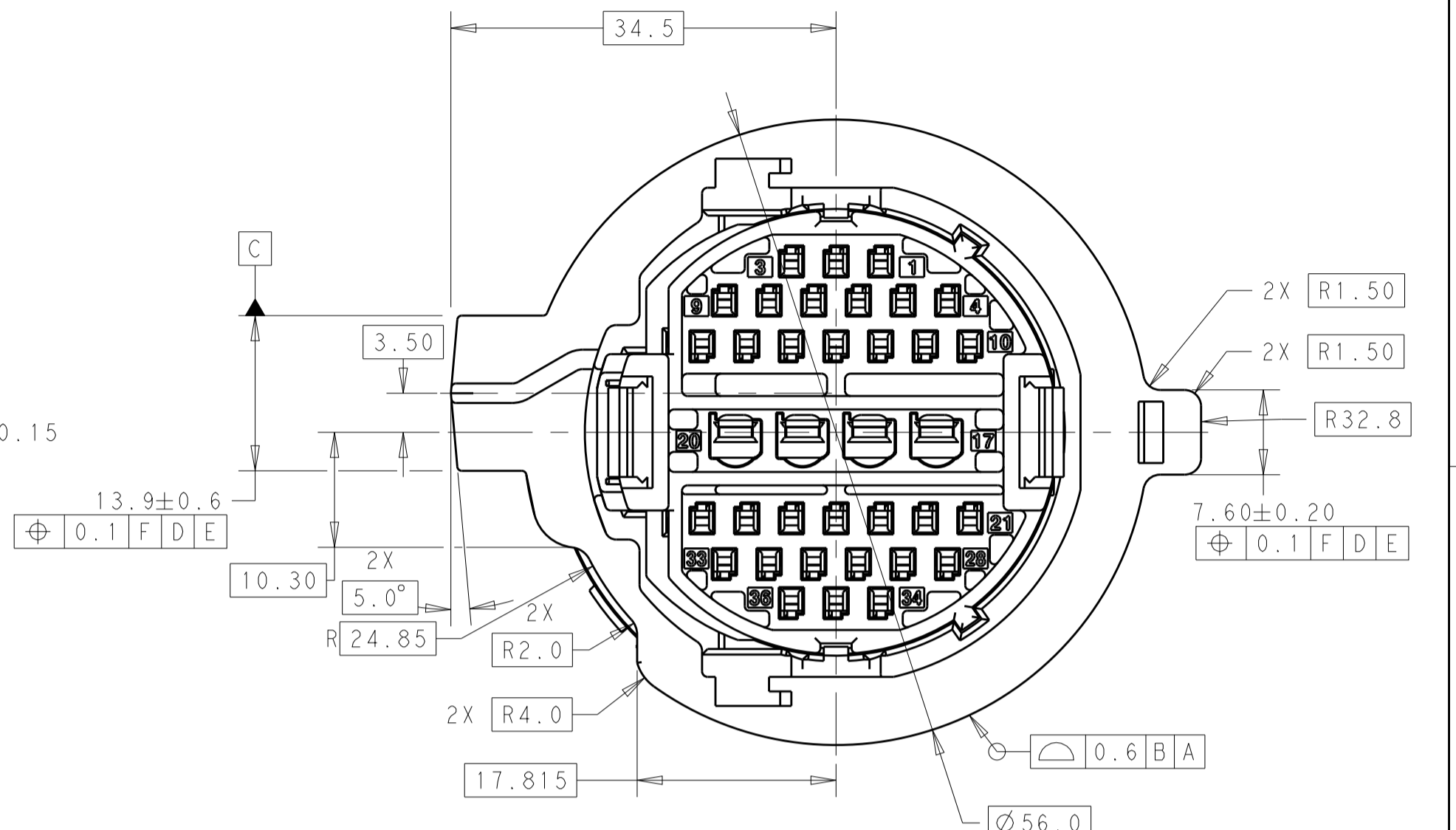
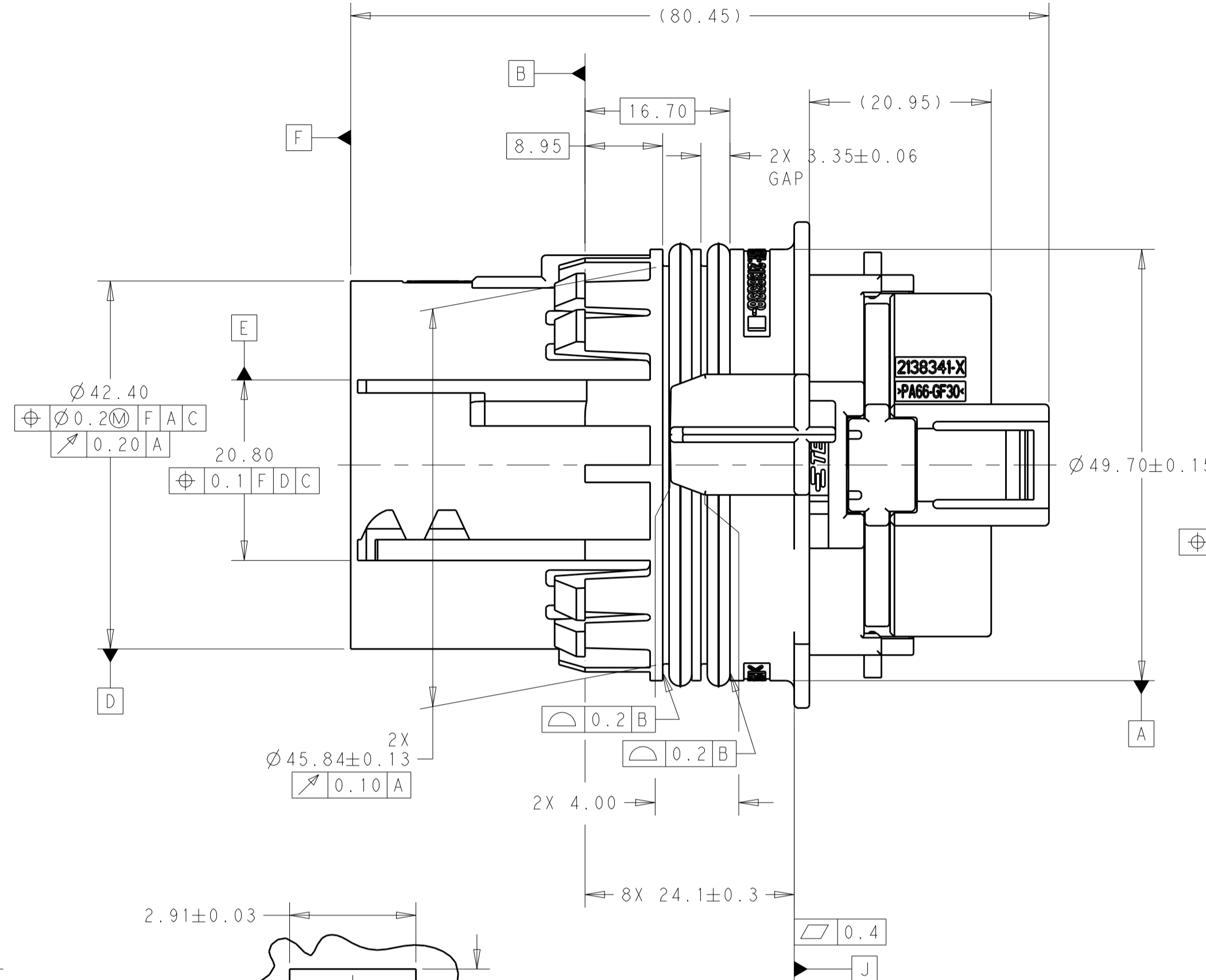
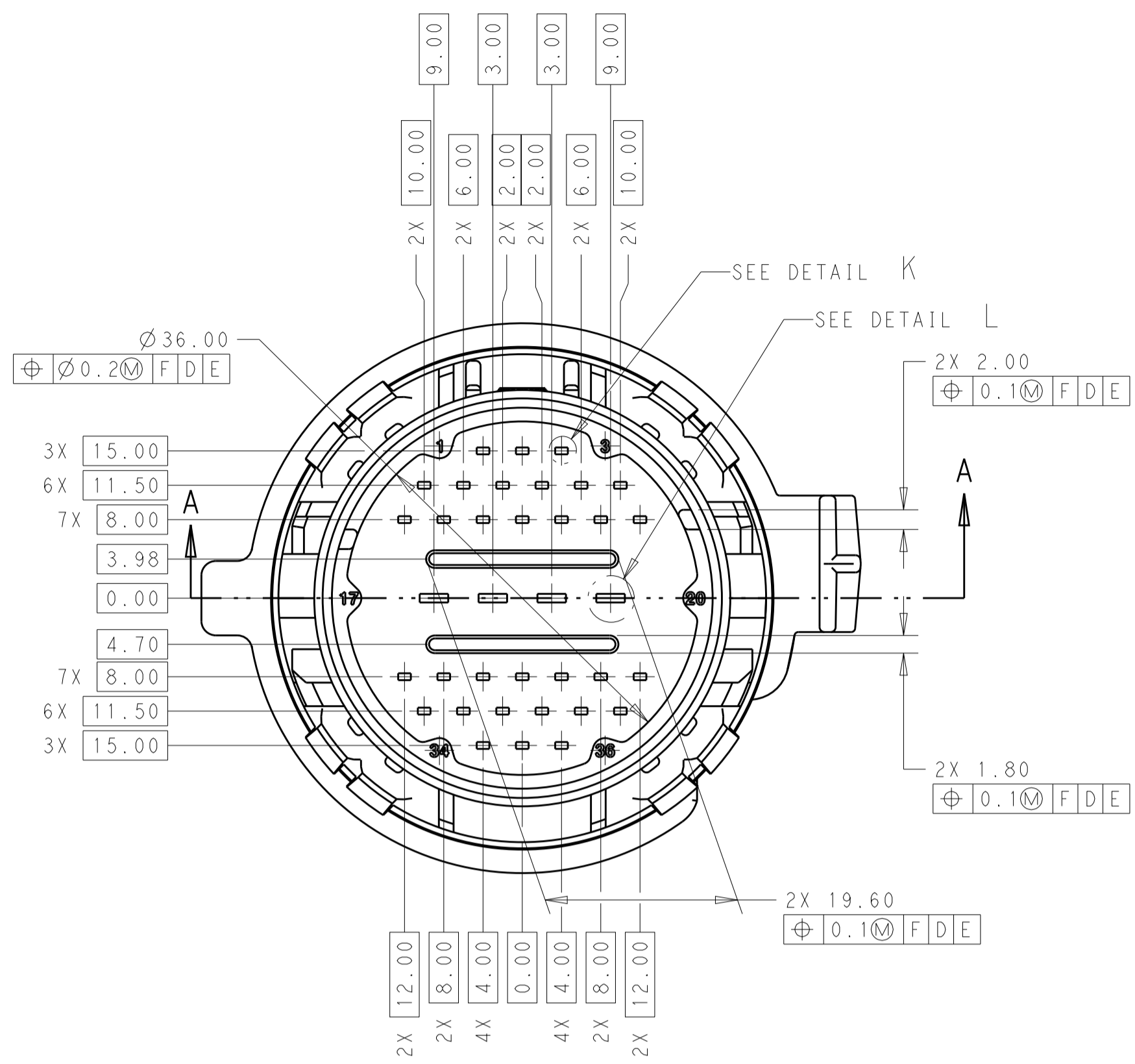
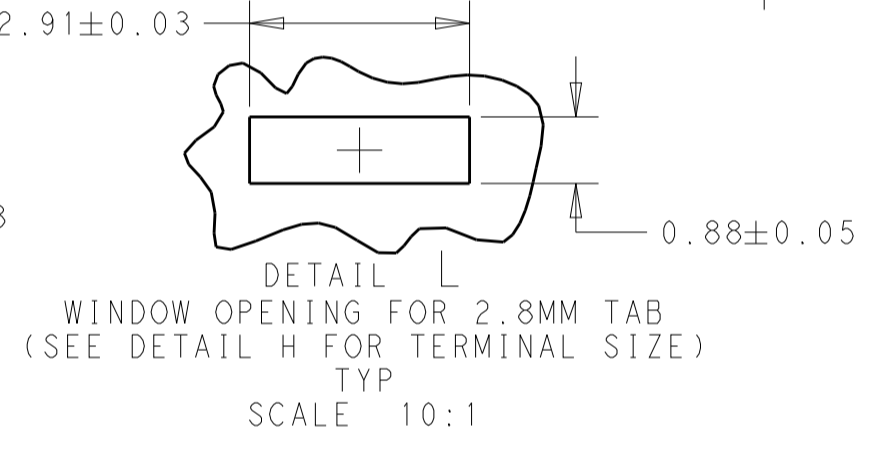
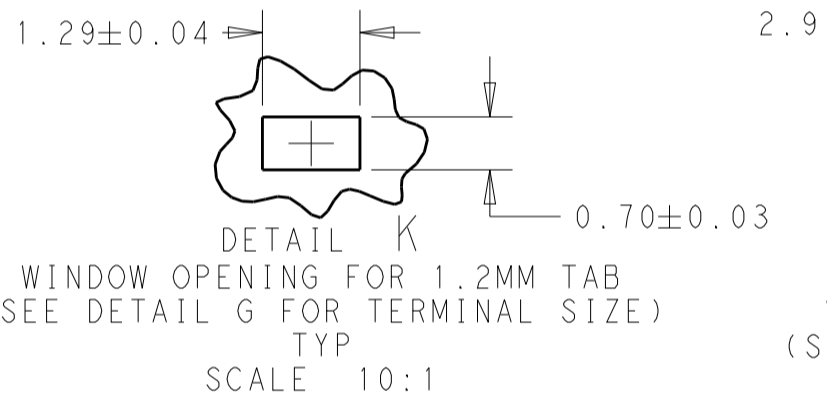


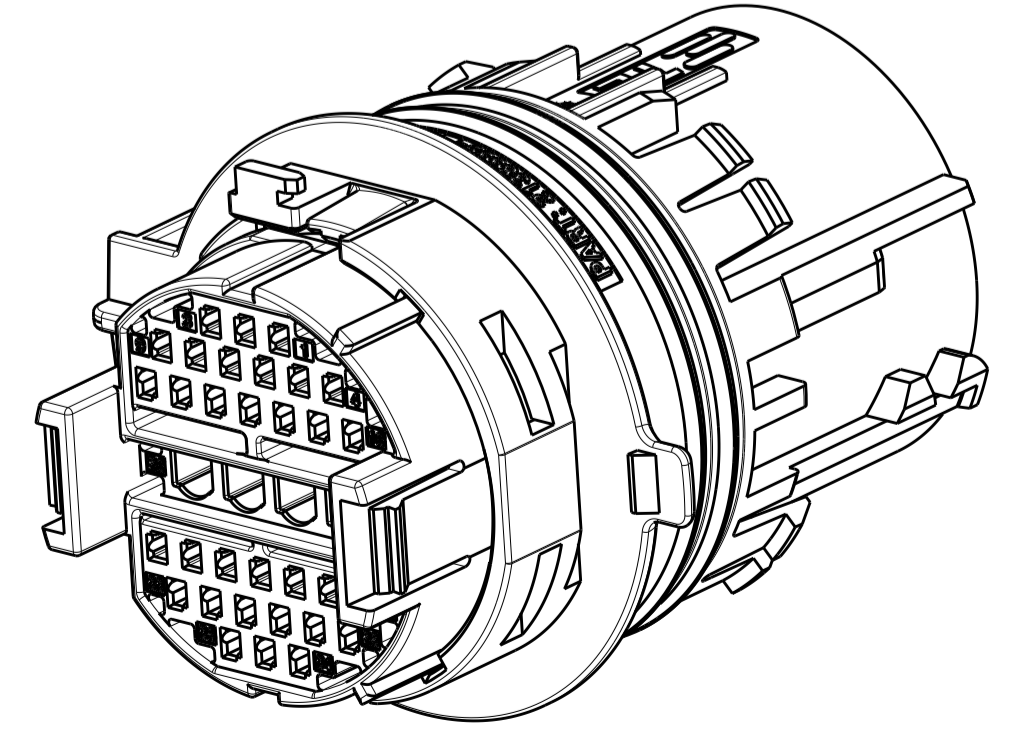
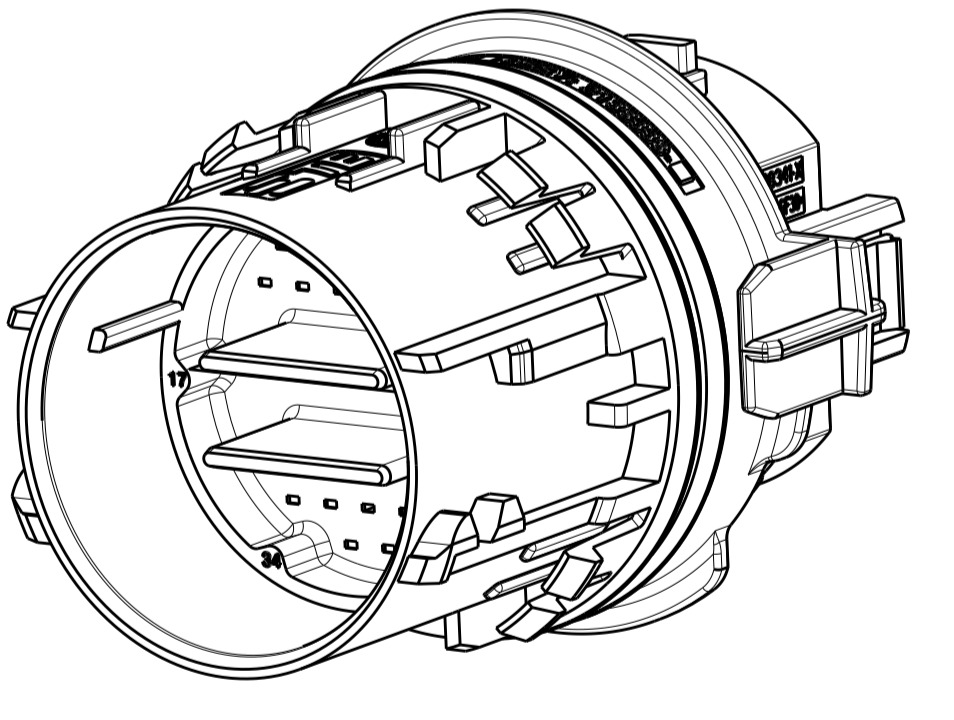
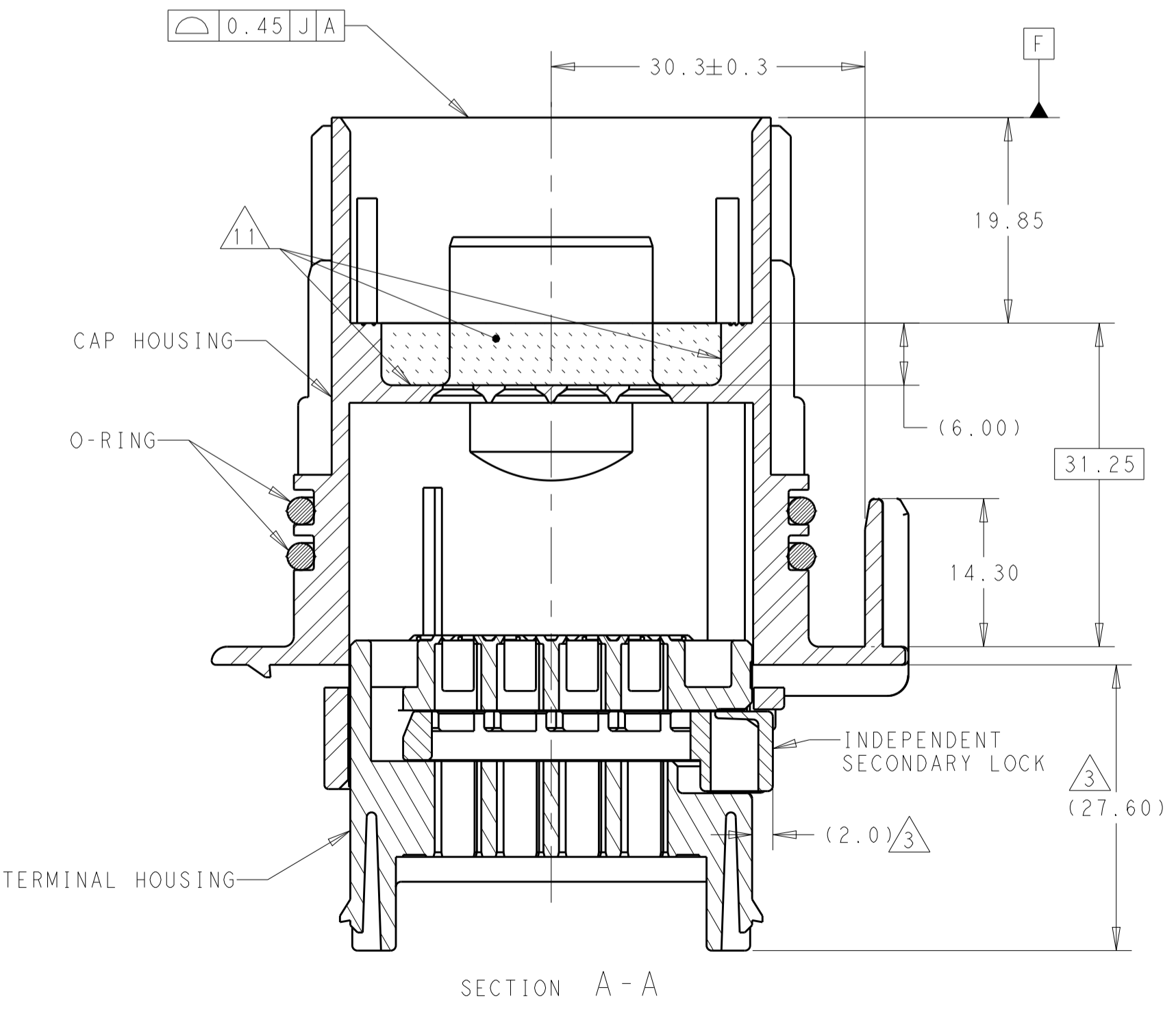
REVISIONS				
REV	DATE	DESCRIPTION	BY	APPD
A2	24APR2014	REVISED PER ECO-14-006092	MBH	RH
A3	15DEC2015	REVISED PER ECO-15-017999	DLD	JLT



CAV NO.	TERMINAL SIZE (TAB)	TE TERMINAL PART NO.	TERMINAL FINISH (INTERFACE)	WIRE SIZE
1-16	1.2MM MCON (SPECIAL)	2177293-1	TIN	0.50-0.75mm <sup>2</sup>
17-20	2.8MM MPO (SPECIAL)	2177290-2	TIN	>1.0-2.5mm <sup>2</sup>



1. MATERIALS:  
 CAP HOUSING: GLASS FIBER REINFORCED NYLON 46, COLOR: SEE TABLE  
 TERMINAL HOUSING: GLASS FIBER REINFORCED NYLON 6/6, COLOR: BLUE  
 INDEPENDENT SECONDARY LOCK: GLASS REINFORCED NYLON 6/6, COLOR: RED  
 O-RING: ETHYLENE ACRYLATE ELASTOMER (AEM), COLOR: BLACK  
 NOTE: THE PLASTIC MATERIALS USED IN THIS CONNECTOR DO NOT CONTAIN CUPROUS IODIDE FOR HEAT STABILIZATION OR CARBON BLACK FOR COLORANT. THE PLASTIC COMPONENTS DO NOT CONTAIN ANY REGRIND.
2. THE CONNECTOR SHOWN MATES WITH THE FOLLOWING TE PLUG CONNECTOR. CONSULT FACTORY FOR ADDITIONAL MATING CONNECTOR OPTIONS. 2138314-\* (SEE SEPARATE DRAWING FOR APPROPRIATE DASH NUMBER)
3. TERMINAL HOUSING AND SECONDARY LOCK SHOWN IN SHIPPING POSITION (TO THE HARNESS MAKER) FINAL CONNECTOR ASSEMBLY IS DONE BY THE HARNESS MAKER. IF THE SECONDARY LOCK CLOSURES DURING TRANSIT OR HANDLING IT MUST BE RE-OPENED IN ORDER TO INSTALL TERMINALS.
4. SEE TABLE 1 FOR APPROPRIATE MALE TERMINAL PART NUMBERS, FINISH, AND WIRE SIZE.
5. ONCE THE TERMINALS ARE PROPERLY INSTALLED, AND THE SECONDARY LOCK IS CLOSED, THE TERMINAL HOUSING CAN BE SLID FORWARD INTO THE LOCKED POSITION AS SHOWN ON SHEET 2.
6. THE MALE TERMINALS ARE SEALED TO THE CAP HOUSING WITH POTTING MATERIAL WHICH IS APPLIED BY THE HARNESS MAKER. NOTE: IT IS THE RESPONSIBILITY OF THE HARNESS MAKER TO MAKE SURE THE CONNECTOR IS PROPERLY PREPPED AND THAT THE POTTING MATERIAL DISPENSING AND CURING IS DONE PER THE MANUFACTURER'S RECOMMENDED PROCEDURE. IT IS ALSO THE HARNESS MAKER'S RESPONSIBILITY TO MAKE SURE THE CONNECTOR SEALING SURFACE IS NOT DAMAGED OR IMPAIRED. THE EPOXY CANNOT BE ON THE MALE TERMINAL OUTSIDE OF THE POTTING WELL.
7. AFTER THE EPOXY HAS BEEN DISPENSED, THE HARNESS MAKER WILL NEED TO FIXTURE THE TERMINALS IN PLACE WHILE THE EPOXY CURES IN ORDER TO MAINTAIN PROPER TERMINAL POSITION.
8. FOLLOWING THE EPOXY CURE, A TOP COAT OF SEALANT TO BE APPLIED WITHIN THE POTTING WELL AND CURED PER THE MANUFACTURER'S RECOMMENDED PROCEDURE. NOTE: THE HARNESS MAKER IS RESPONSIBLE TO PRESSURE TEST EACH ASSEMBLY TO MAKE SURE THE CONNECTOR IS PROPERLY SEALED.
9. CONNECTOR SHOWN TO BE USED WITH A WIRE DRESS COVER (NOT SUPPLIED AS PART OF CONNECTOR). WIRE DRESS COVER TO BE PURCHASED SEPARATELY. TE P/N: 2138313-1
10. SEE SHEET 3 FOR RECOMMENDED BORE GEOMETRY FOR THIS CONNECTOR TO INTERFACE WITH AND SEAL TO.
11. INDICATED SURFACES RECEIVE POTTING MATERIAL. SURFACE TEXTURE IS CONTROLLED ON MOLD CONTROL PLAN. TEXTURE DEPTH: 40±10 MICROMETER (REFERENCE)



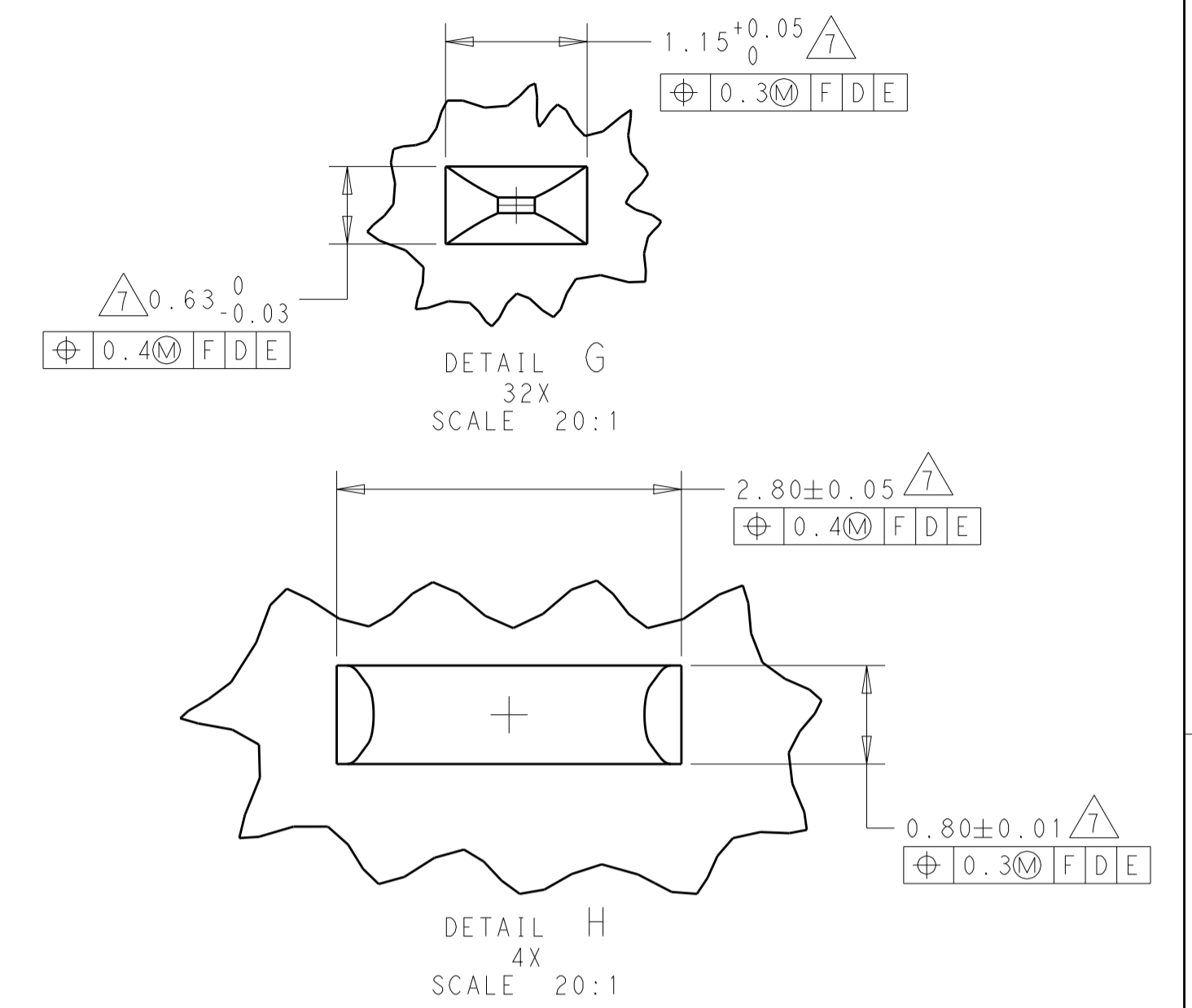
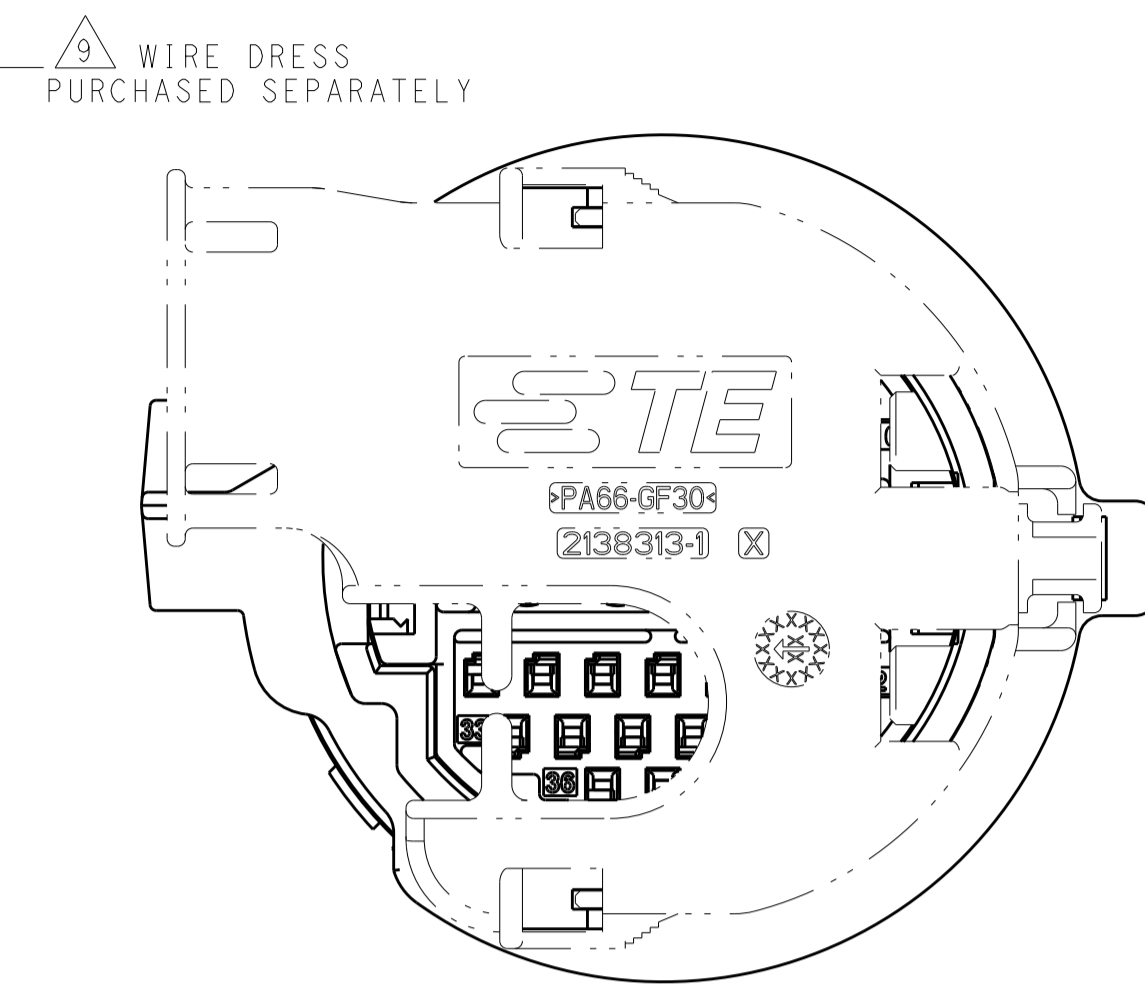
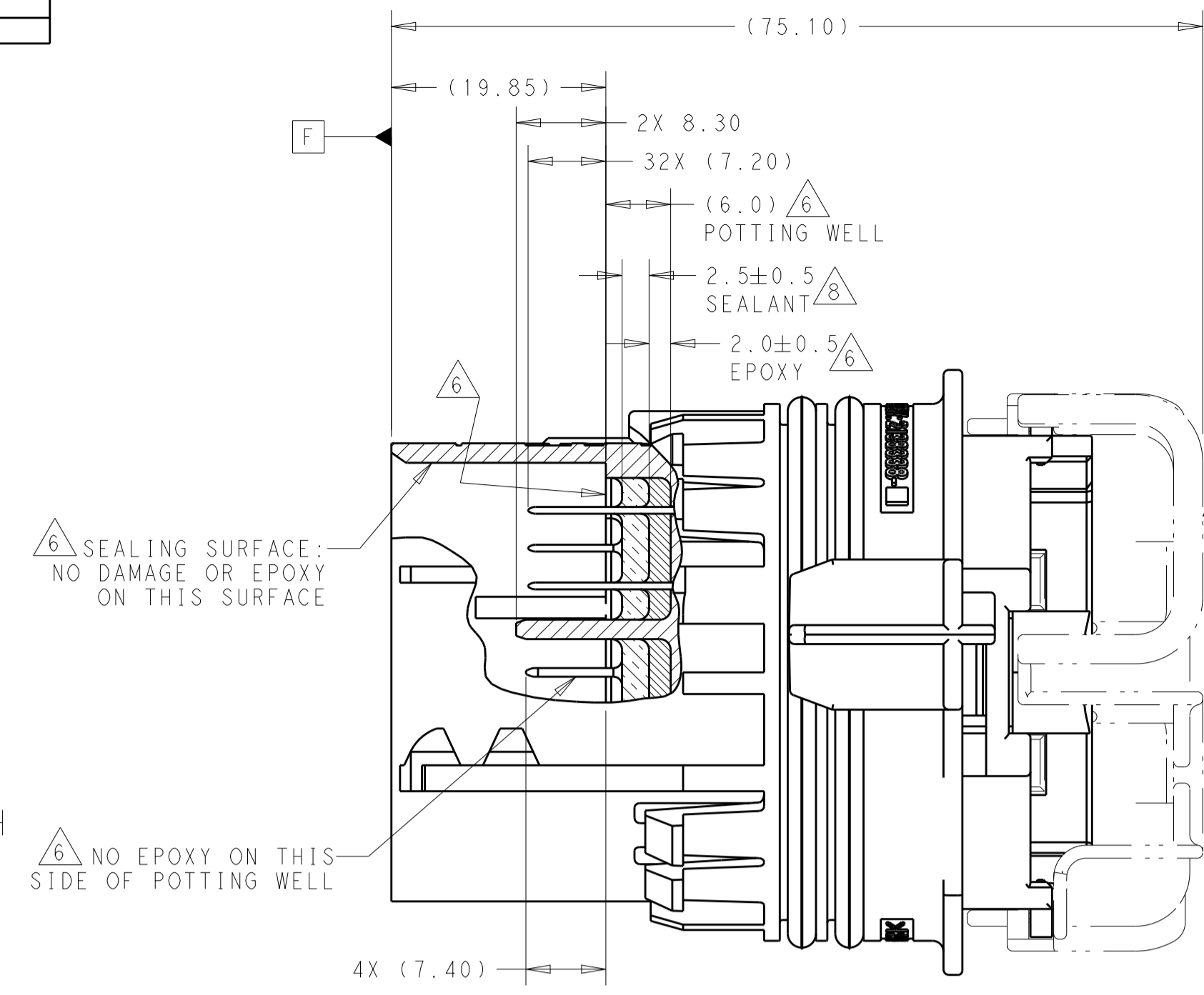
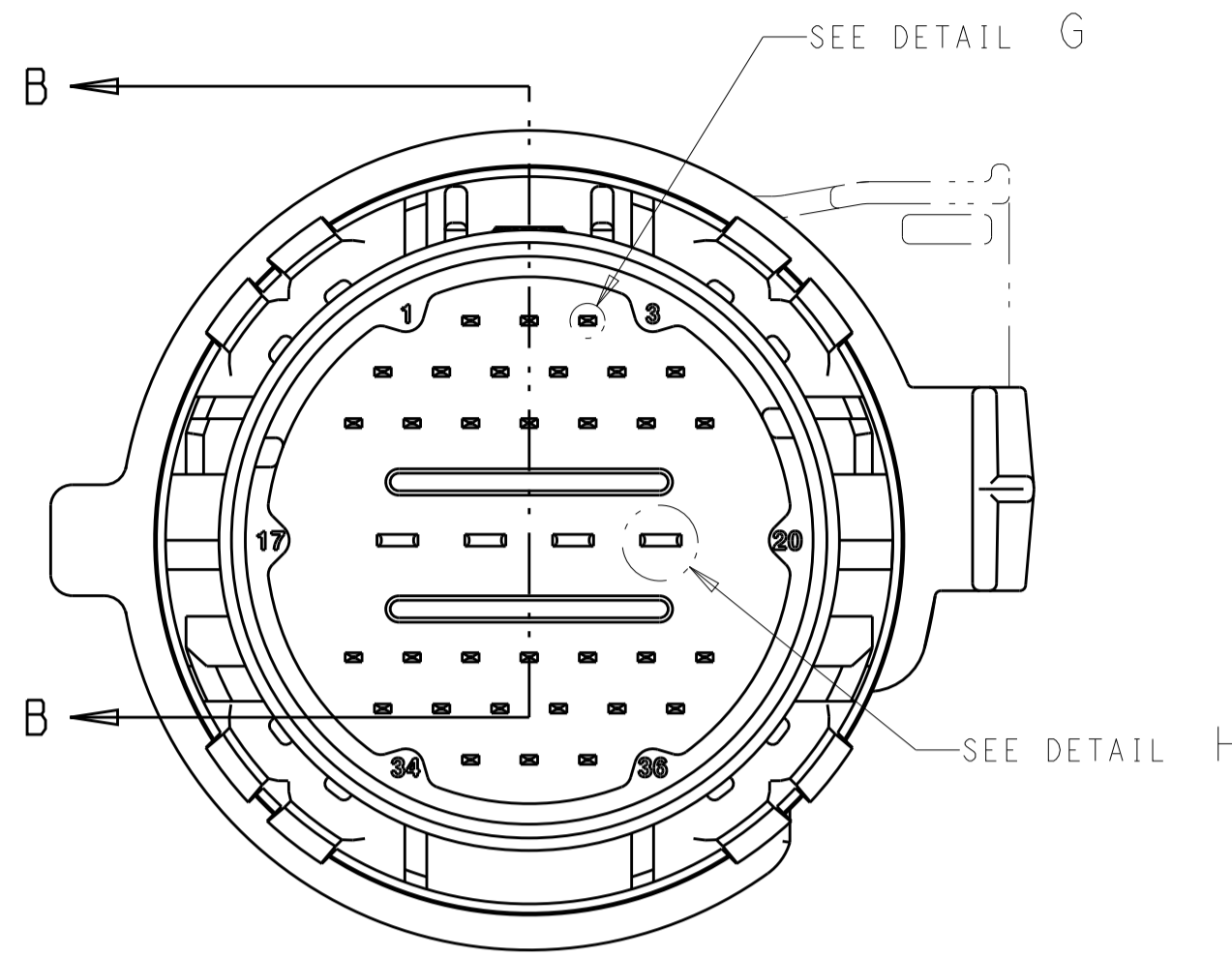
NATURAL	CAV NO.	KEY	TERMINAL HOLE POSITION																																				TE ASSEMBLY PART NUMBER
			CAVITIES WITH A NUMERIC SYMBOL INDICATES CLOSED TERMINAL LOCATION BLANK CAVITIES INDICATES OPEN TERMINAL HOLE LOCATIONS																																				
NATURAL	29	A 36	36	35	34	33	32	31	30	29	28	27	26	25	24	23	22	21	20	19	18	17	16	15	14	13	12	11	10	9	8	7	6	5	4	3	2	1	2138338-7
NATURAL	32	A 36	36	35	34	33	32	31	30	29	28	27	26	25	24	23	22	21	20	19	18	17	16	15	14	13	12	11	10	9	8	7	6	5	4	3	2	1	2138338-6
NATURAL	27	A 36	36	35	34	33	32	31	30	29	28	27	26	25	24	23	22	21	20	19	18	17	16	15	14	13	12	11	10	9	8	7	6	5	4	3	2	1	2138338-5
NATURAL	36	D	36	35	34	33	32	31	30	29	28	27	26	25	24	23	22	21	20	19	18	17	16	15	14	13	12	11	10	9	8	7	6	5	4	3	2	1	2138338-4
NATURAL	36	C	36	35	34	33	32	31	30	29	28	27	26	25	24	23	22	21	20	19	18	17	16	15	14	13	12	11	10	9	8	7	6	5	4	3	2	1	2138338-3
NATURAL	36	B	36	35	34	33	32	31	30	29	28	27	26	25	24	23	22	21	20	19	18	17	16	15	14	13	12	11	10	9	8	7	6	5	4	3	2	1	2138338-2
NATURAL	36	A	36	35	34	33	32	31	30	29	28	27	26	25	24	23	22	21	20	19	18	17	16	15	14	13	12	11	10	9	8	7	6	5	4	3	2	1	2138338-1

THIS DRAWING IS A CONTROLLED DOCUMENT. DIMENSIONS: mm. TOLERANCES UNLESS OTHERWISE SPECIFIED: 0 PLC ±0.0, 1 PLC ±0.5, 2 PLC ±0.13, 3 PLC ±0.05, 4 PLC ±0.0, ANGLES ±0.0. MATERIAL: FINISH. WEIGHT: CUSTOMER DRAWING.

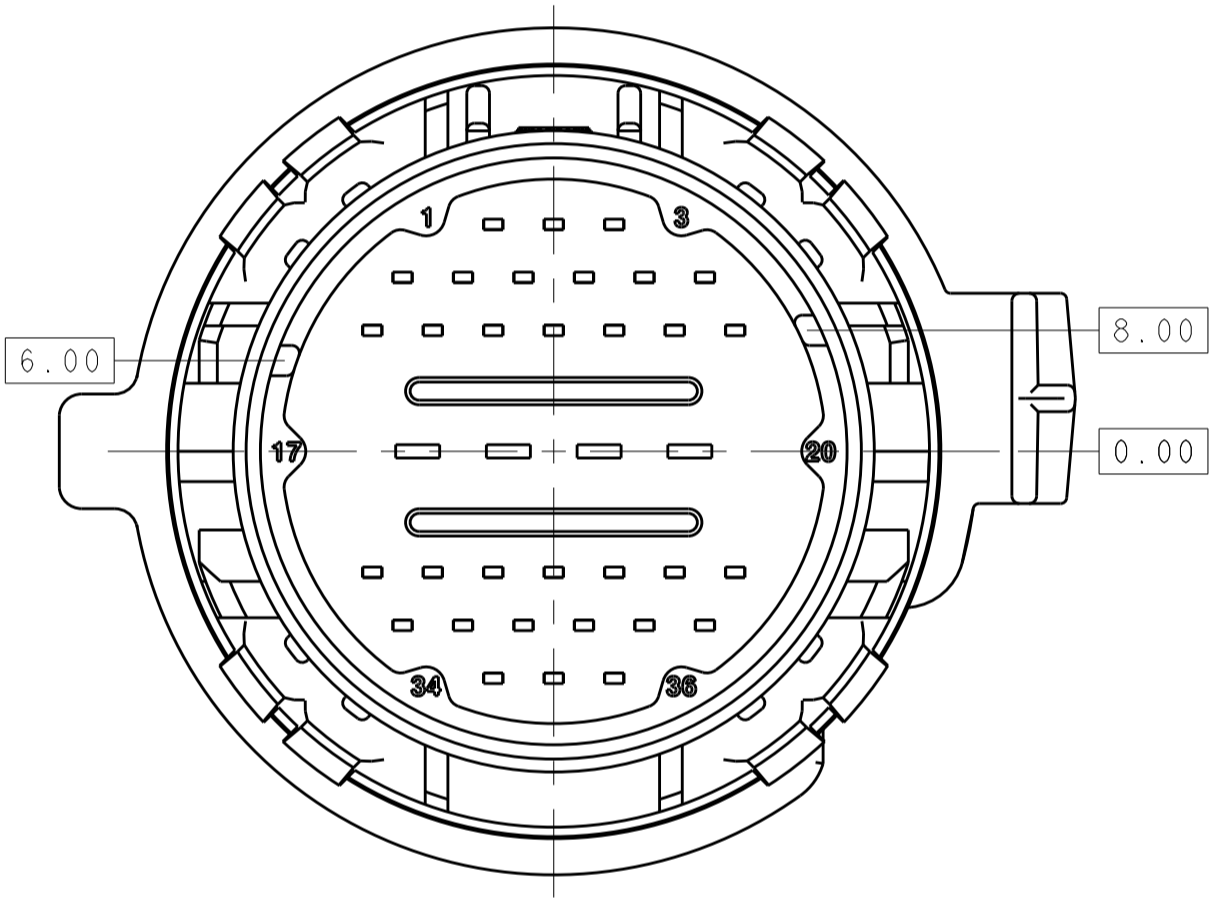
APV: HITCHCOCK, SANDBURG, SANDBURG. DATE: 09MAY2011. NAME: 36 POSITION SEALED CAP ASSEMBLY TRANSMISSION PASS-THRU (32X 1.2MM AND 4X 2.8MM TABS). SIZE: A. CAGE CODE: 100779. DRAWING NO: 2138338. RESTRICTED TO: A3.

TE Connectivity

REVISIONS				
REV	DATE	BY	CHKD	APVD
1				
2				
3				
4				
5				
6				
7				
8				

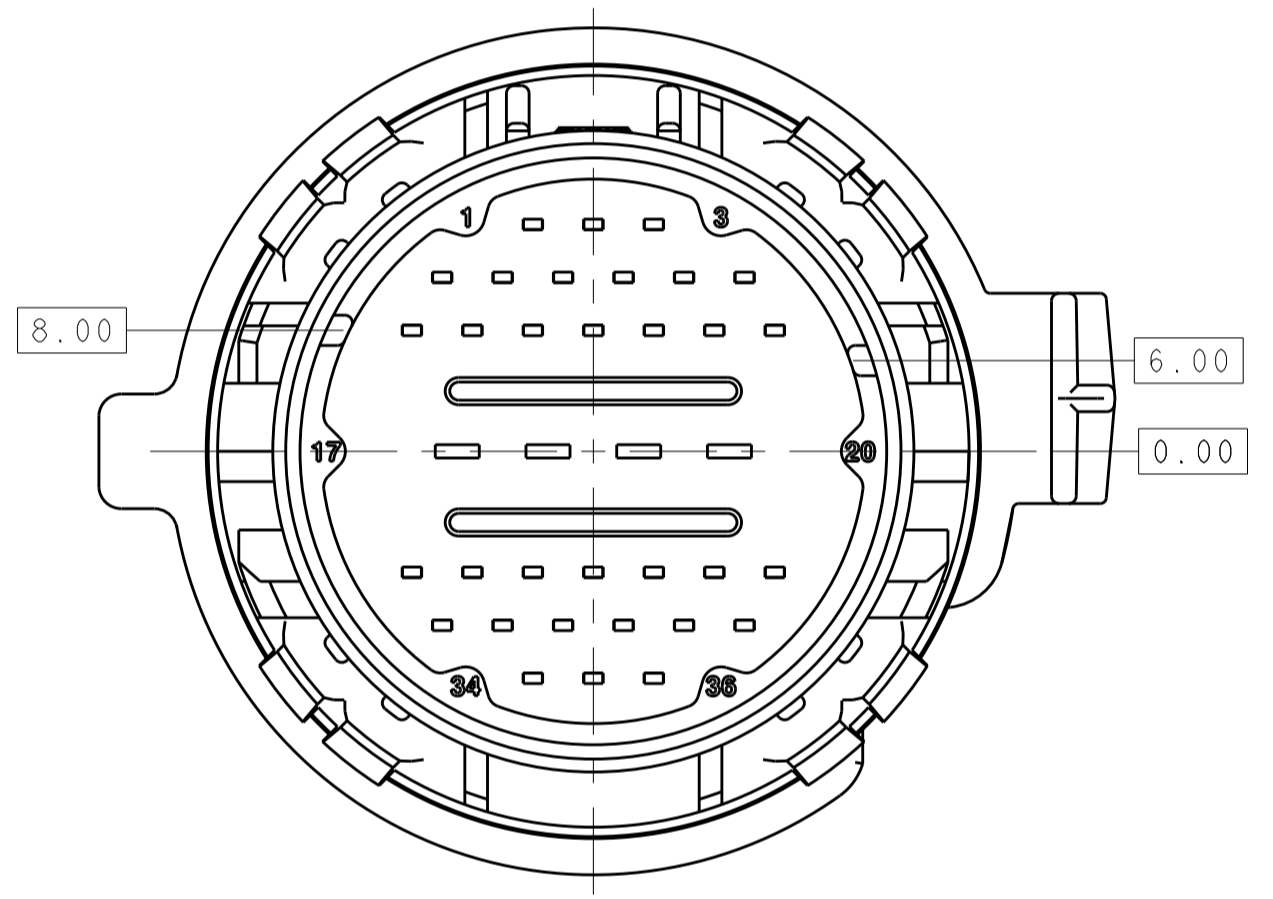


SECTION B-B



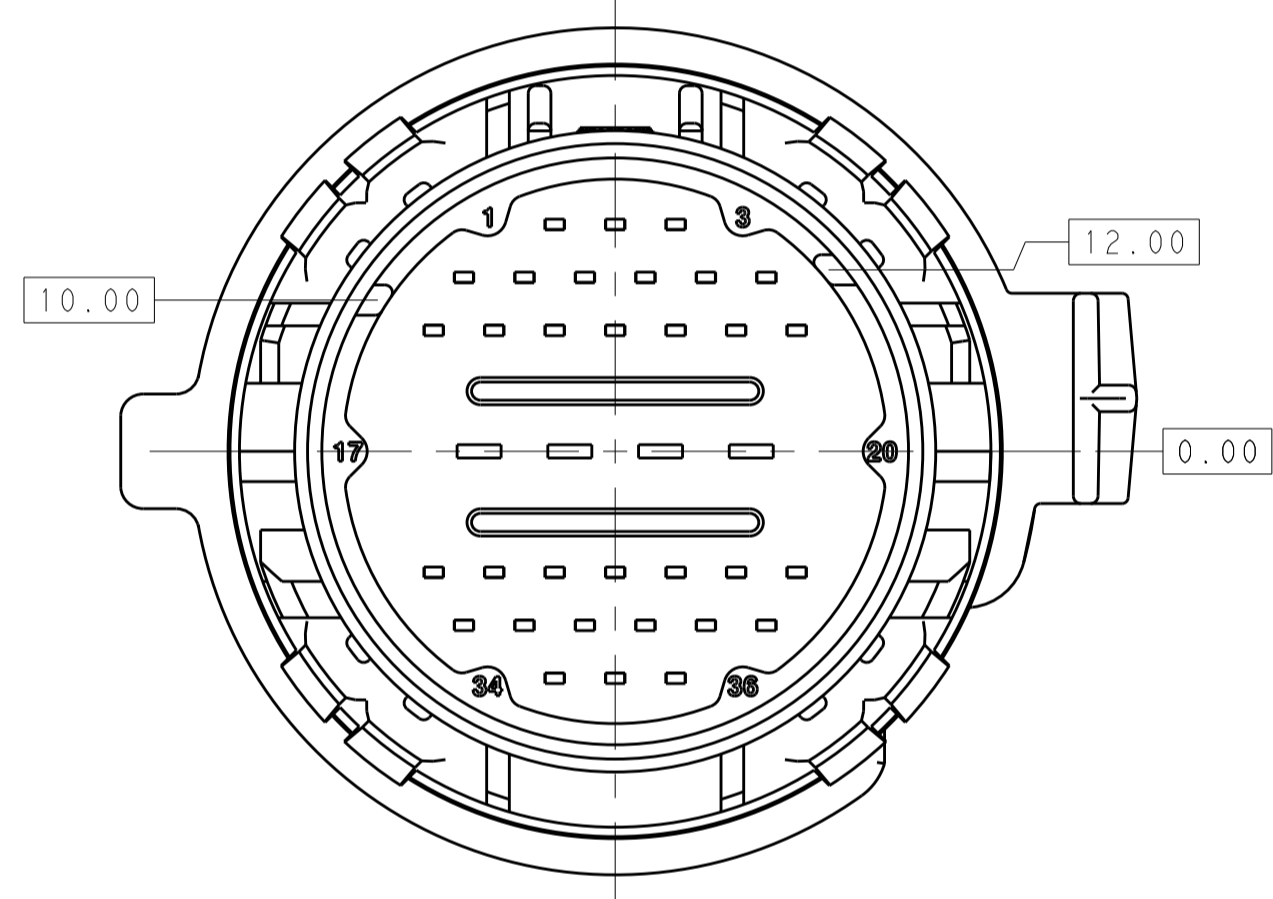
SCALE 2:1

2138338-1  
KEYING OPTION "A"



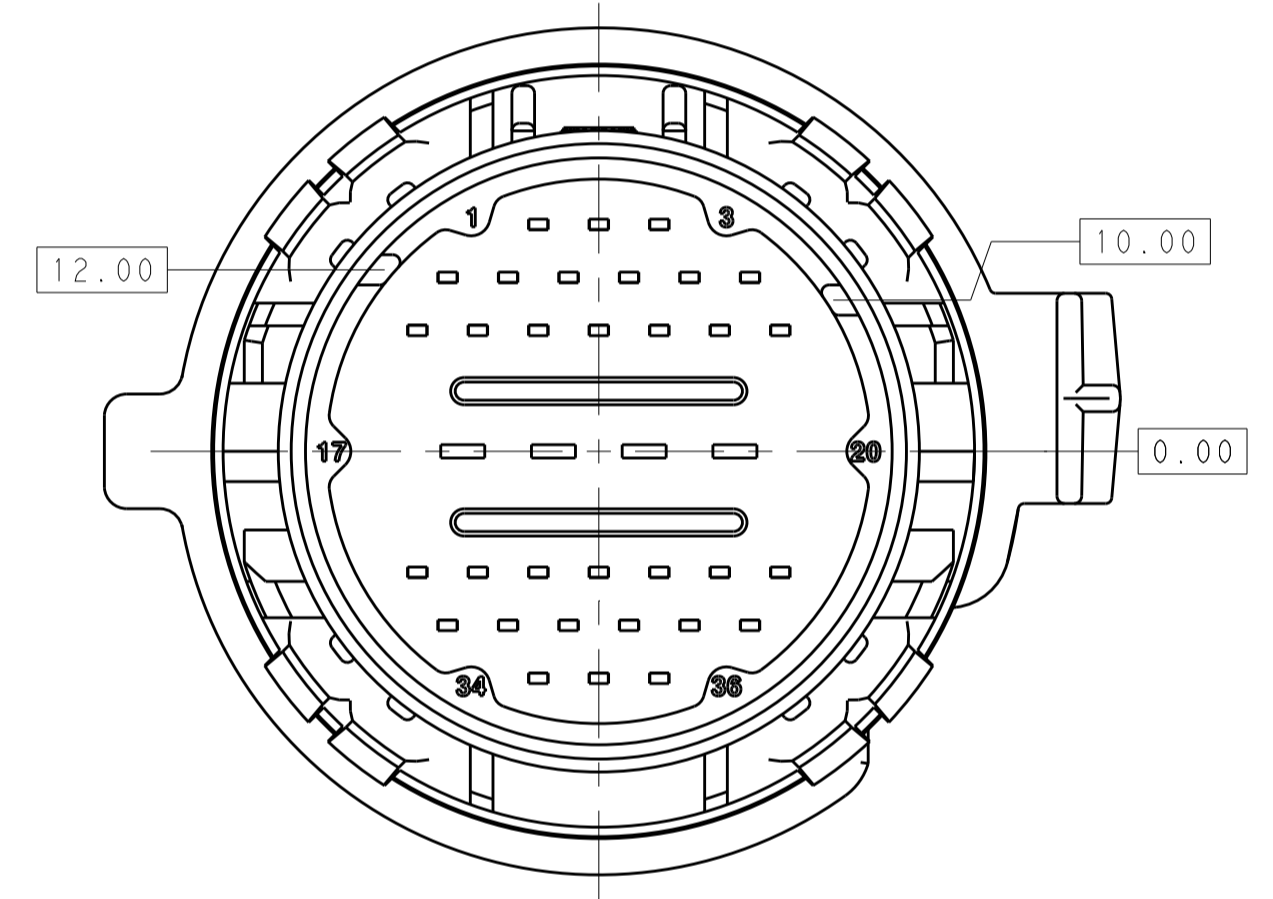
SCALE 2:1

2138338-2  
KEYING OPTION "B"



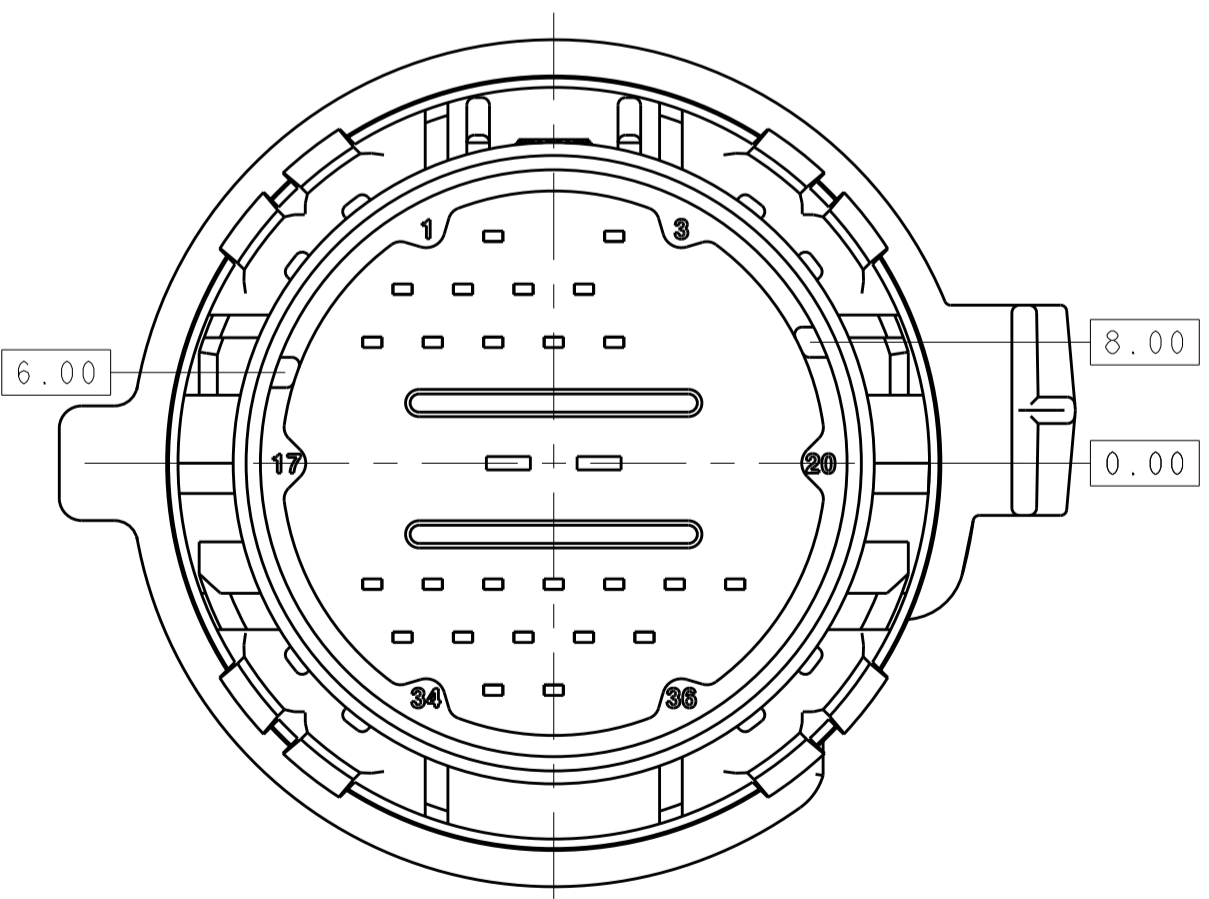
SCALE 2:1

2138338-3  
KEYING OPTION "C"



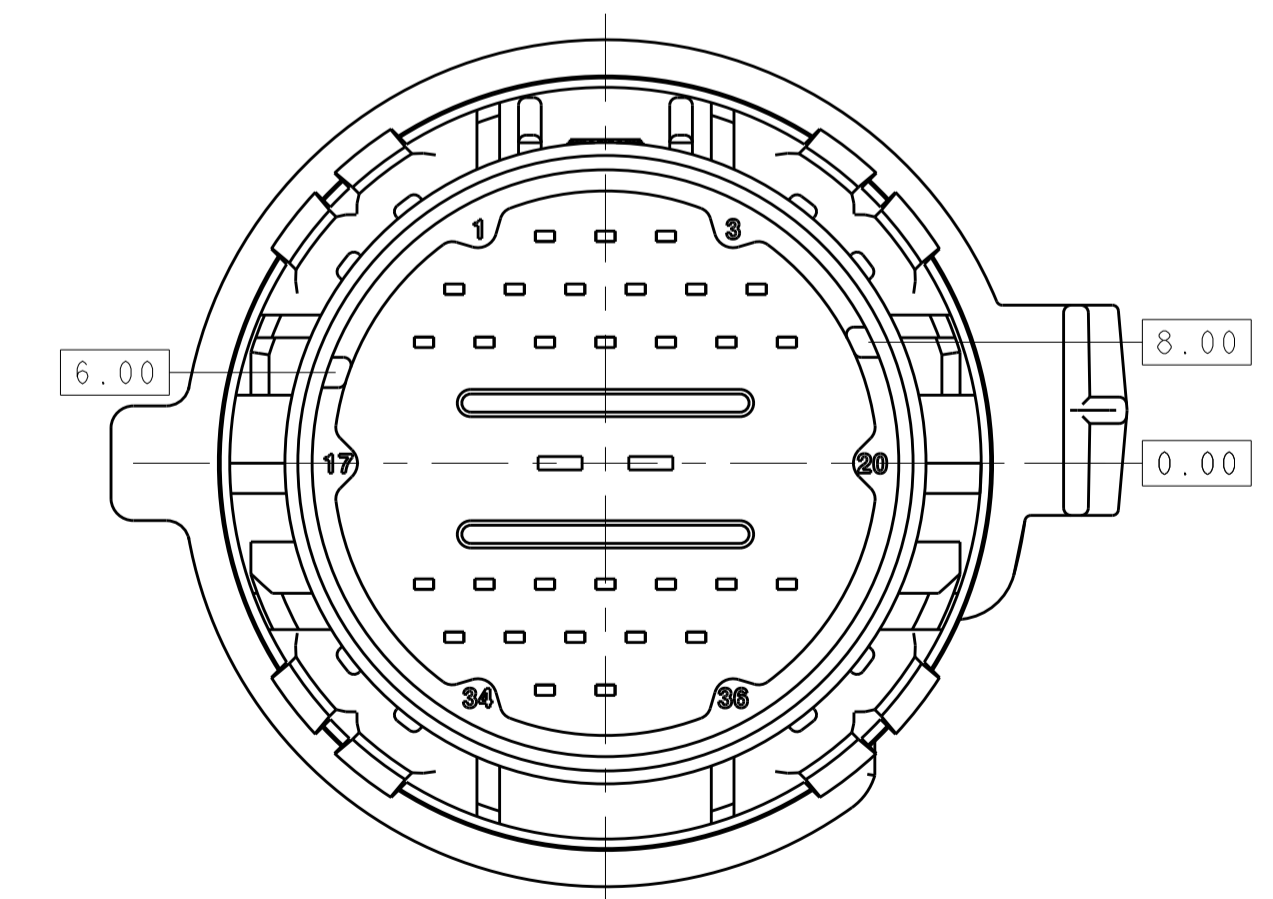
SCALE 2:1

2138338-4  
KEYING OPTION "D"



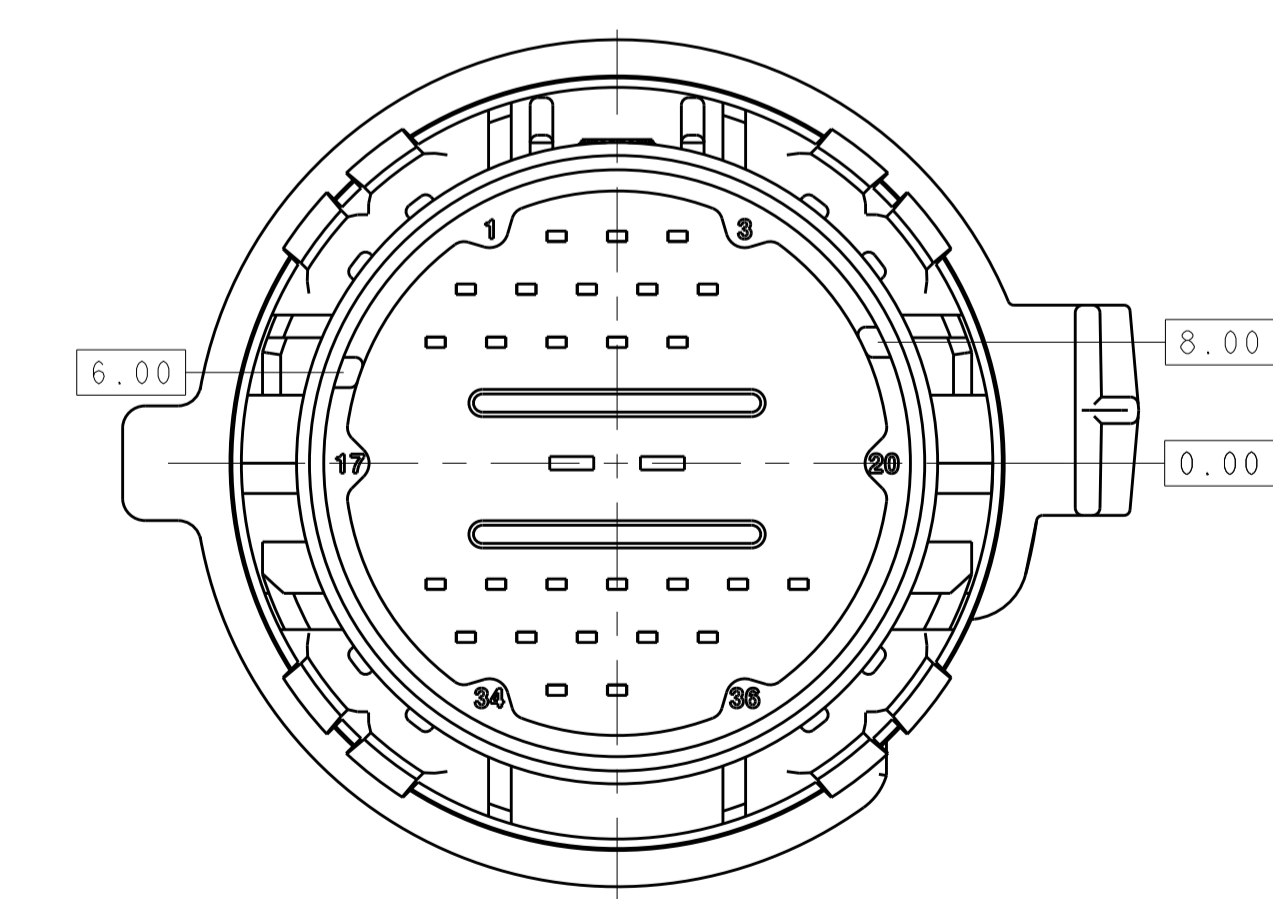
SCALE 2:1

2138338-5  
KEYING OPTION "A", 27P DE-POPULATION



SCALE 2:1

2138338-6  
KEYING OPTION "A", 32P DE-POPULATION

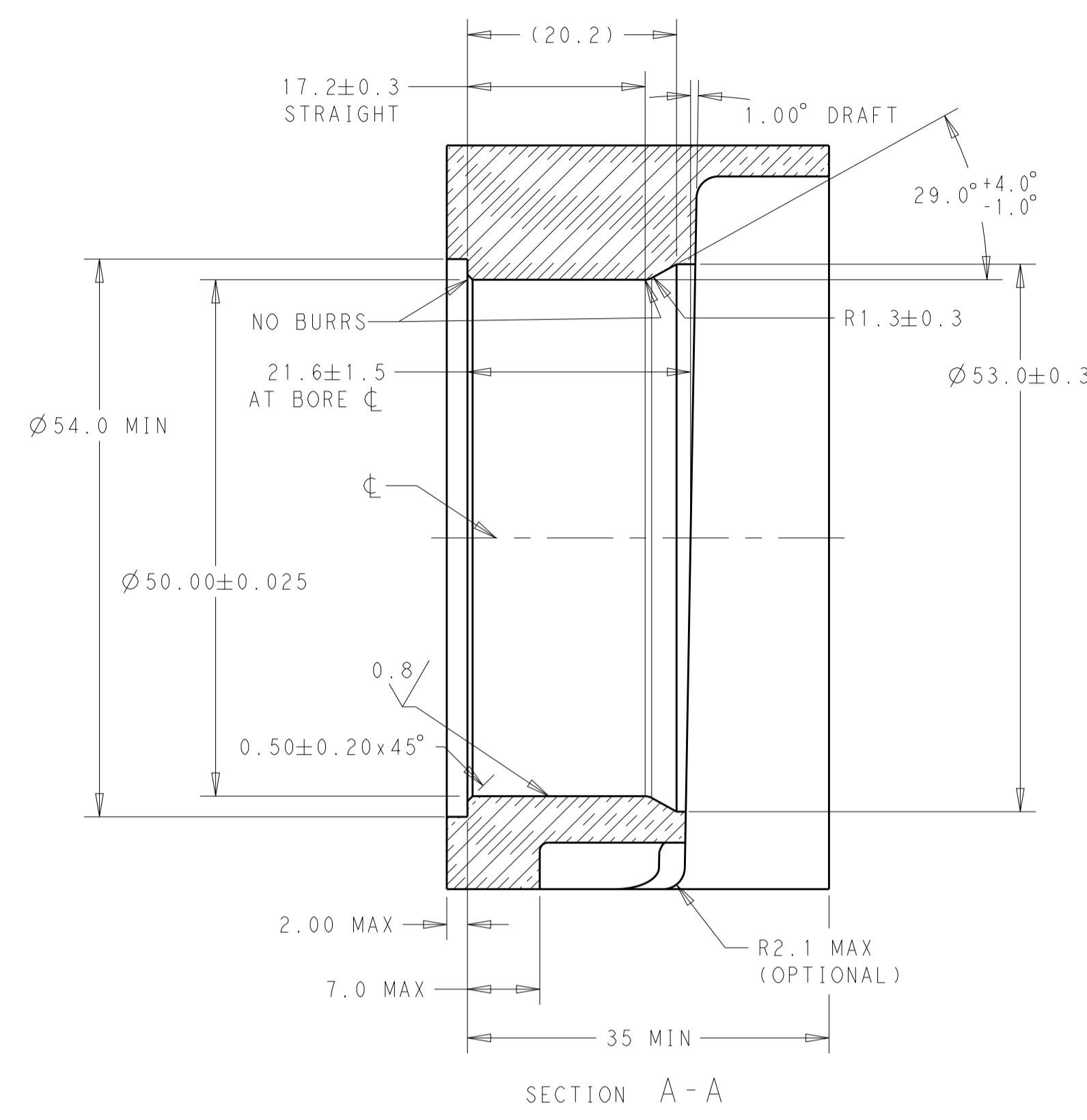
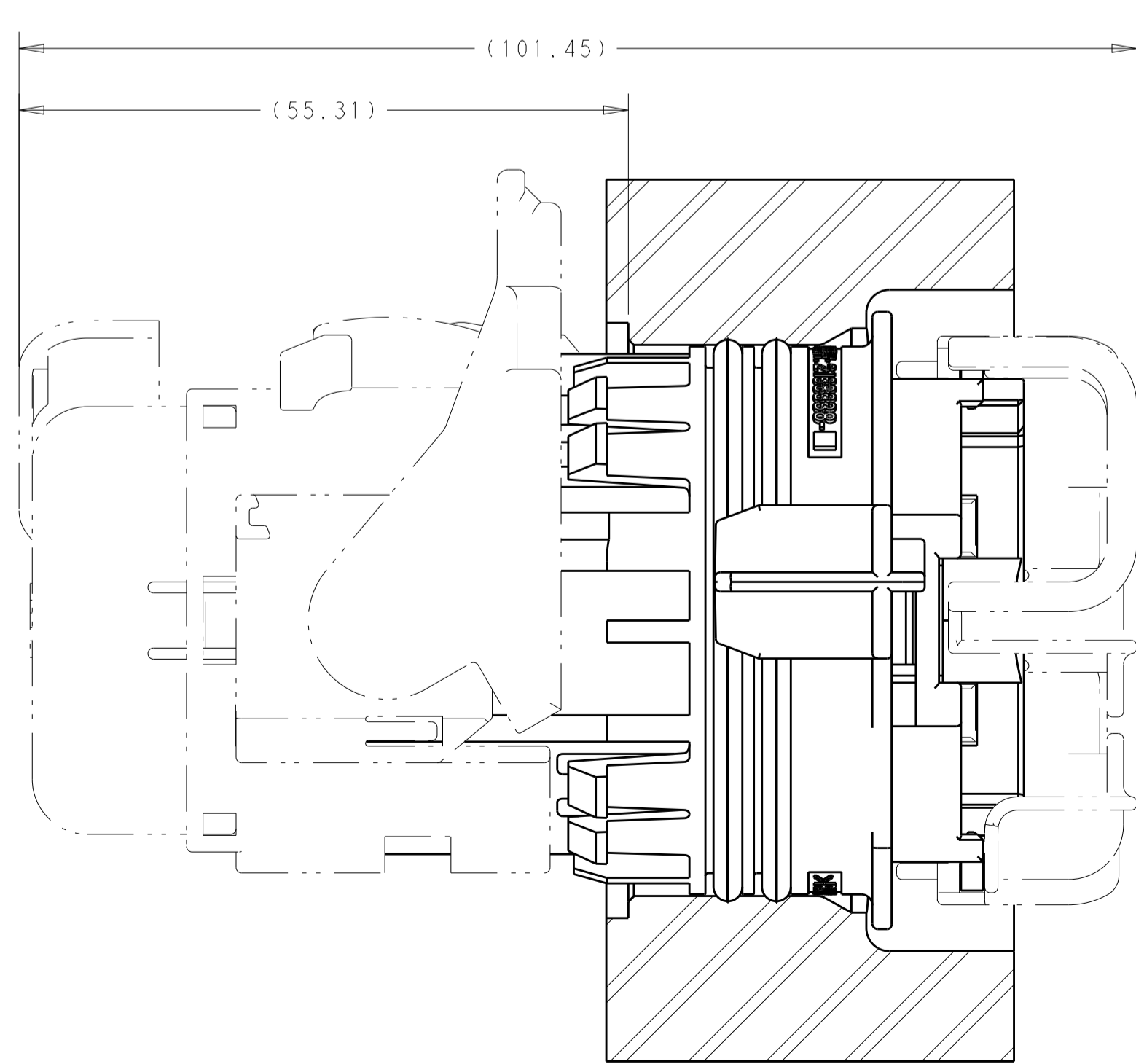
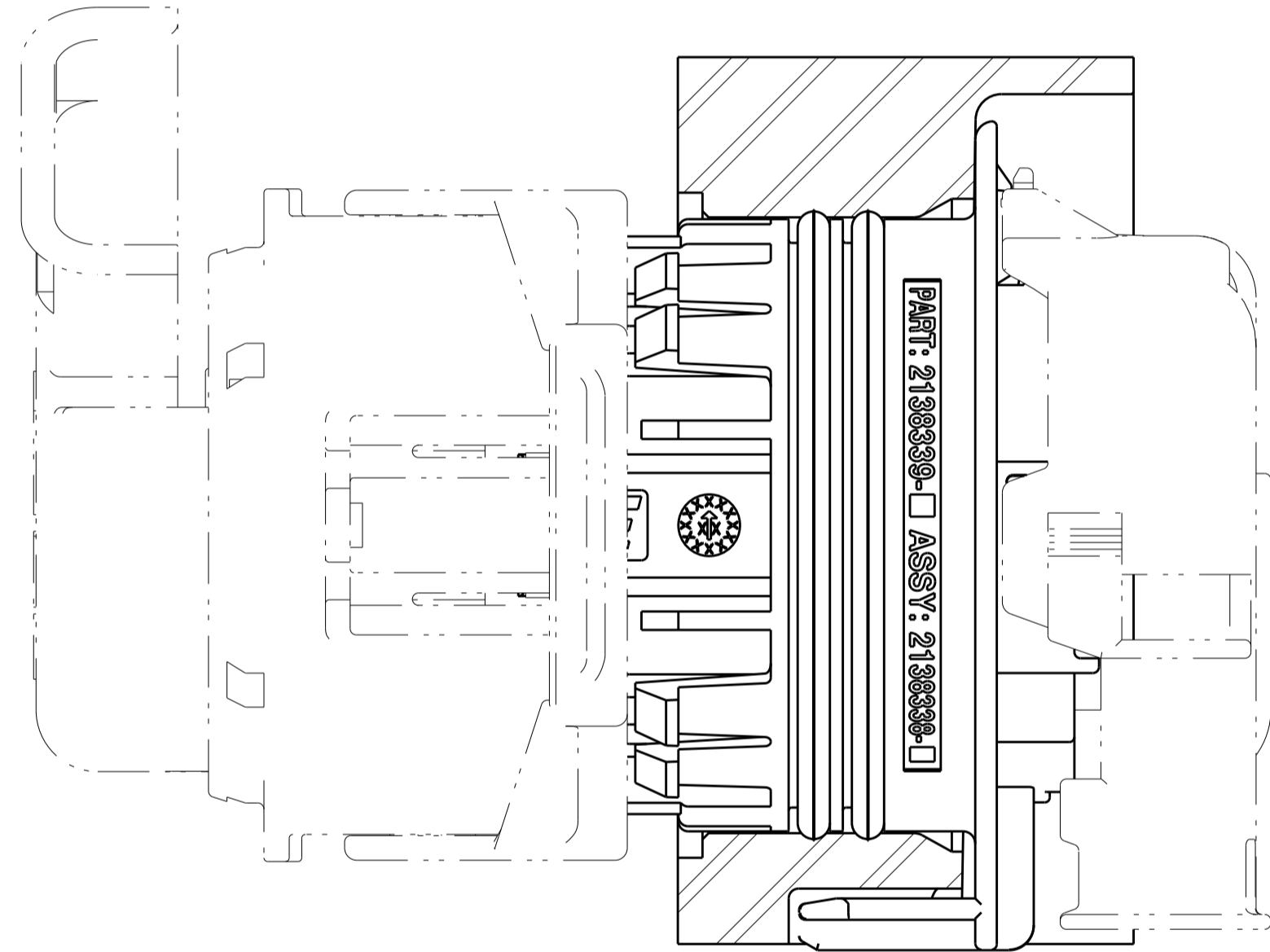
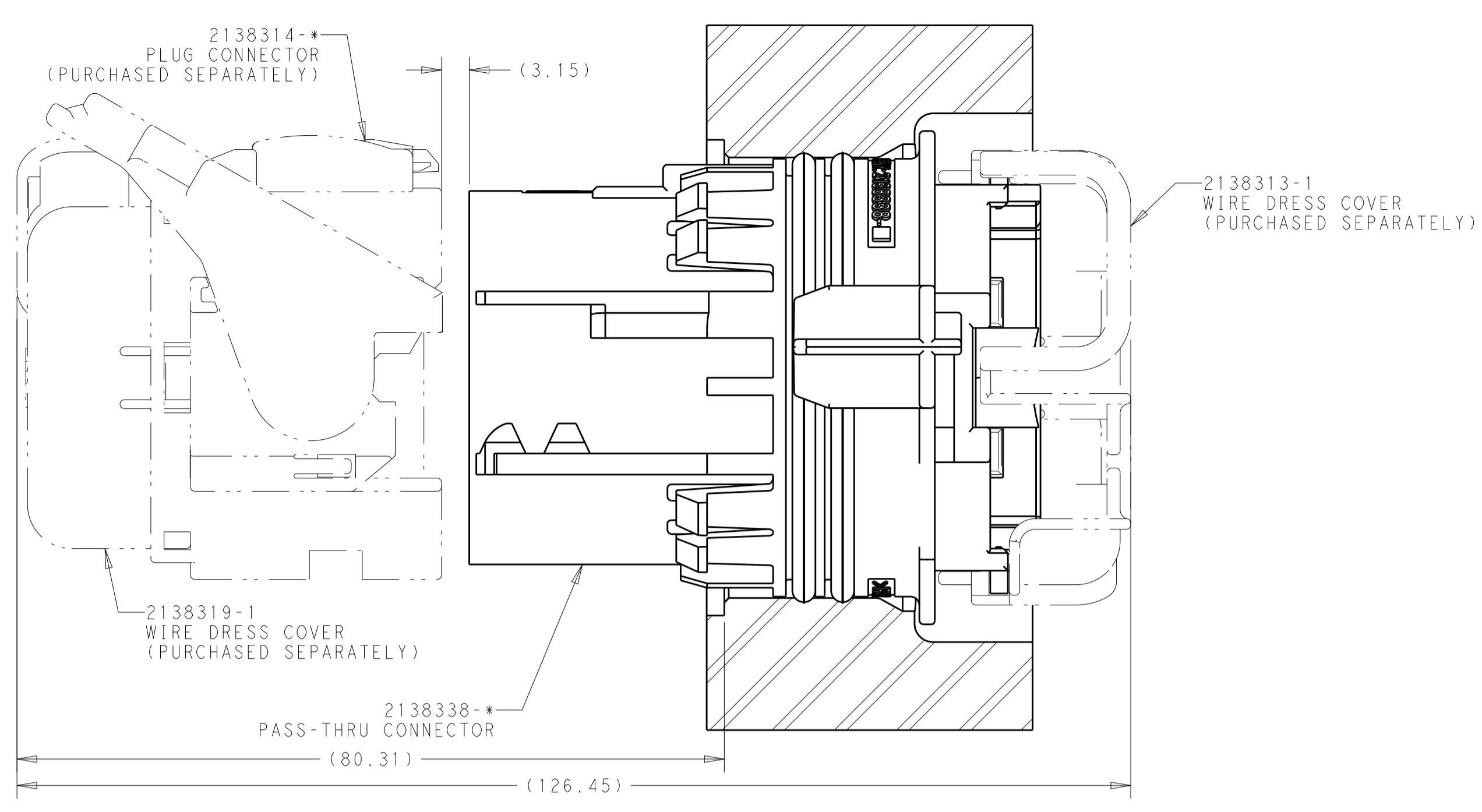


SCALE 2:1

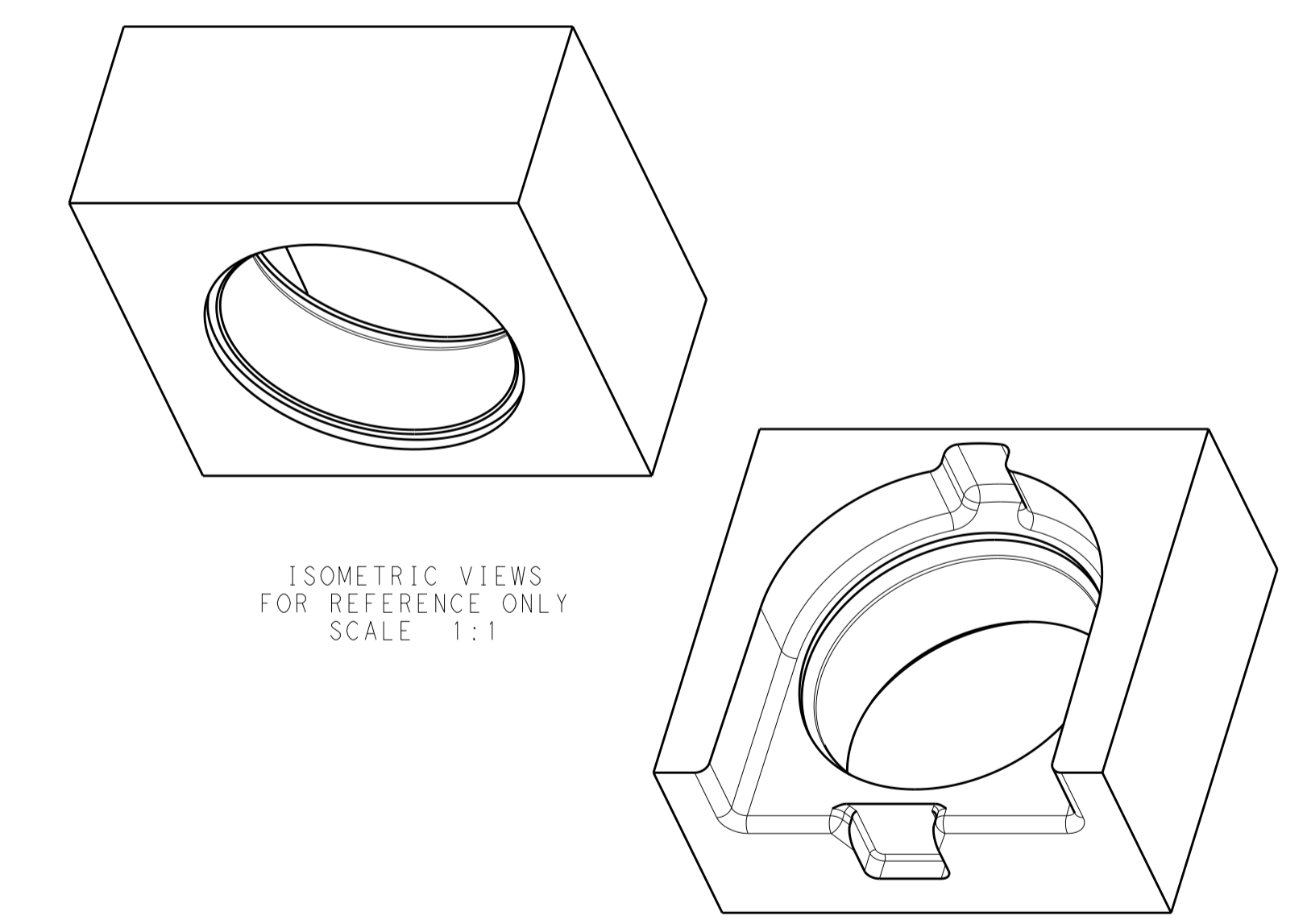
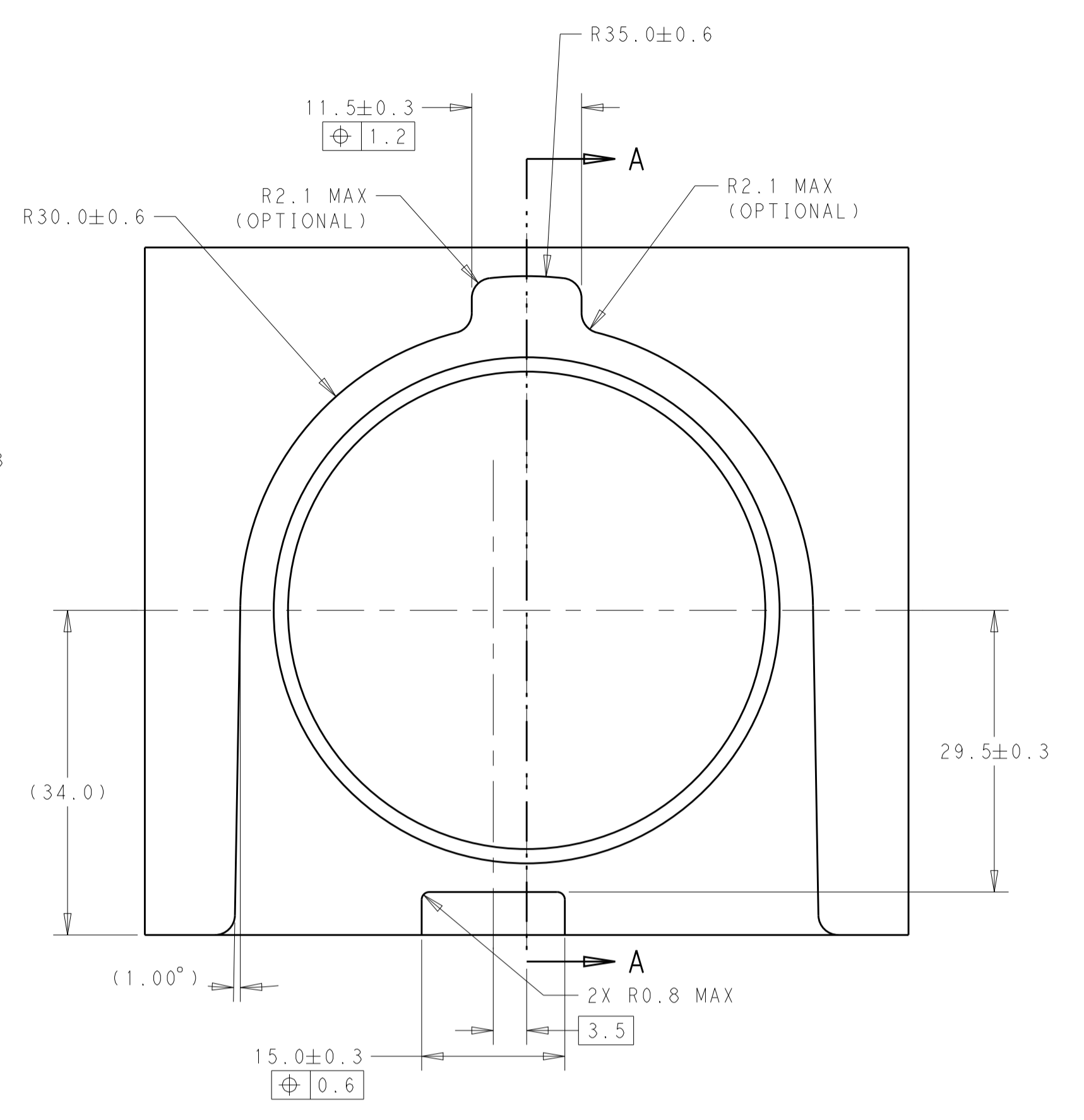
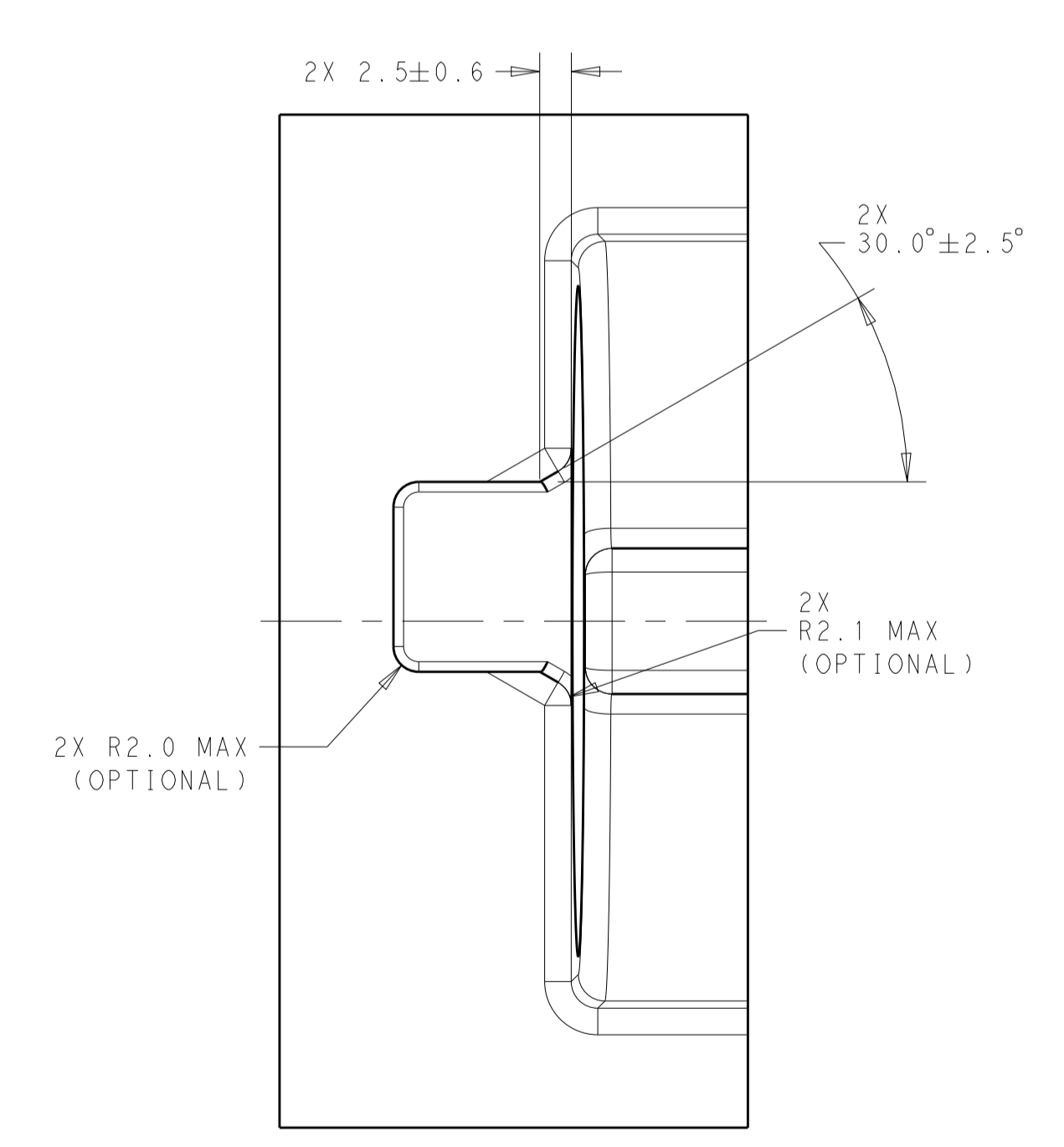
2138338-7  
KEYING OPTION "A", 29P DE-POPULATION

THIS DRAWING IS A CONTROLLED DOCUMENT.		OWN: M. HITCHCOCK 09MAY2011	 TE Connectivity
DIMENSIONS: mm		CHK: J. SANDBURG 09MAY2011	
TOLERANCES UNLESS OTHERWISE SPECIFIED:		APVD: J. SANDBURG 09MAY2011	NAME: 36 POSITION SEALED CAP ASSEMBLY TRANSMISSION PASS-THRU (32X 1.2MM AND 4X 2.8MM TABS)
0 PLC ±0.0 1 PLC ±0.5 2 PLC ±0.13 3 PLC ±0.05 4 PLC ±0.0 ANGLES ±3°		PRODUCT SPEC	
MATERIAL		APPLICATION SPEC	SIZE: A1
FINISH		WEIGHT	CAGE CODE: 2138338
		CUSTOMER DRAWING	SCALE: 2:1 SHEET 2 OF 3 REV: A2

REVISIONS				
P.	LTN	DESCRIPTION	DATE	APPV
-	-	SEE SHEET 1	-	-



RECOMMENDED MOUNTING HOLE DETAIL



THIS DRAWING IS A CONTROLLED DOCUMENT.		DWN: M. HITCHCOCK 09MAY2011 CHK: J. SANDBURG 09MAY2011 APVD: J. SANDBURG 09MAY2011	TE Connectivity
DIMENSIONS: mm 	TOLERANCES UNLESS OTHERWISE SPECIFIED: 0 PLC ±0.0 1 PLC ±0.5 2 PLC ±0.13 3 PLC ±0.05 4 PLC ±0.0 ANGLES ±0.0 FINISH ±0.3	NAME: 36 POSITION SEALED CAP ASSEMBLY TRANSMISSION PASS-THRU (32X 1.2MM AND 4X 2.8MM TABS)	
MATERIAL		PRODUCT SPEC APPLICATION SPEC WEIGHT CUSTOMER DRAWING	SIZE: A1 CAGE CODE: 00779 DRAWING NO: C=2138338 SCALE: 2:1 SHEET: 3 OF 3 REV: A2