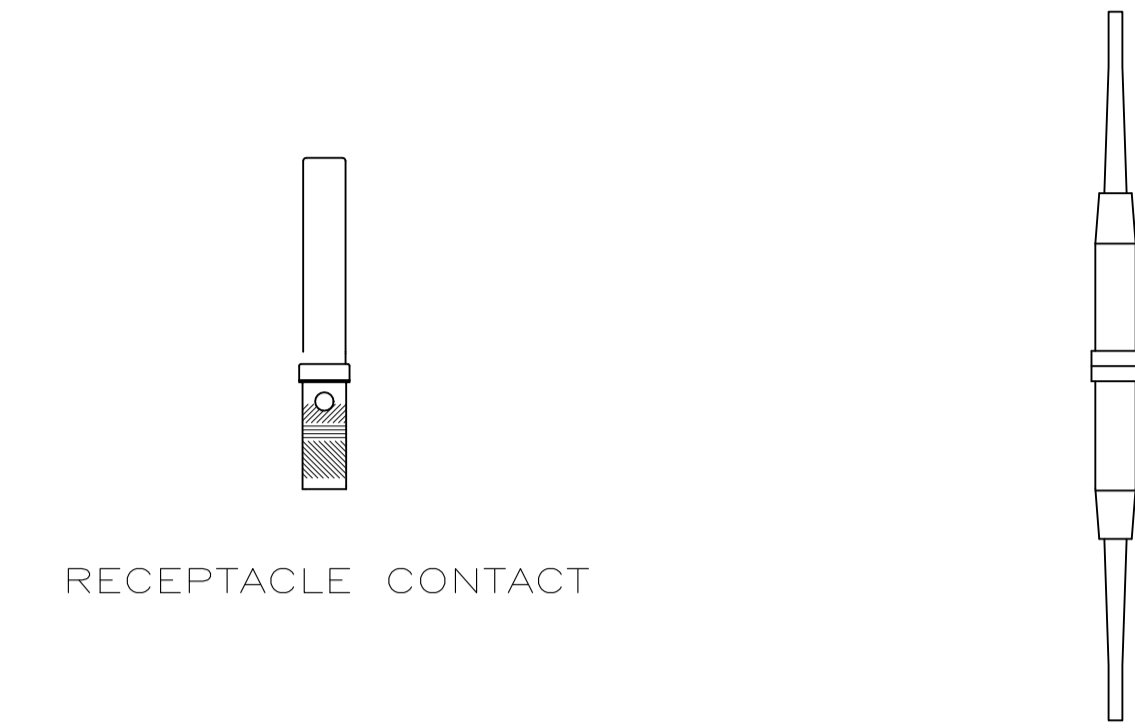
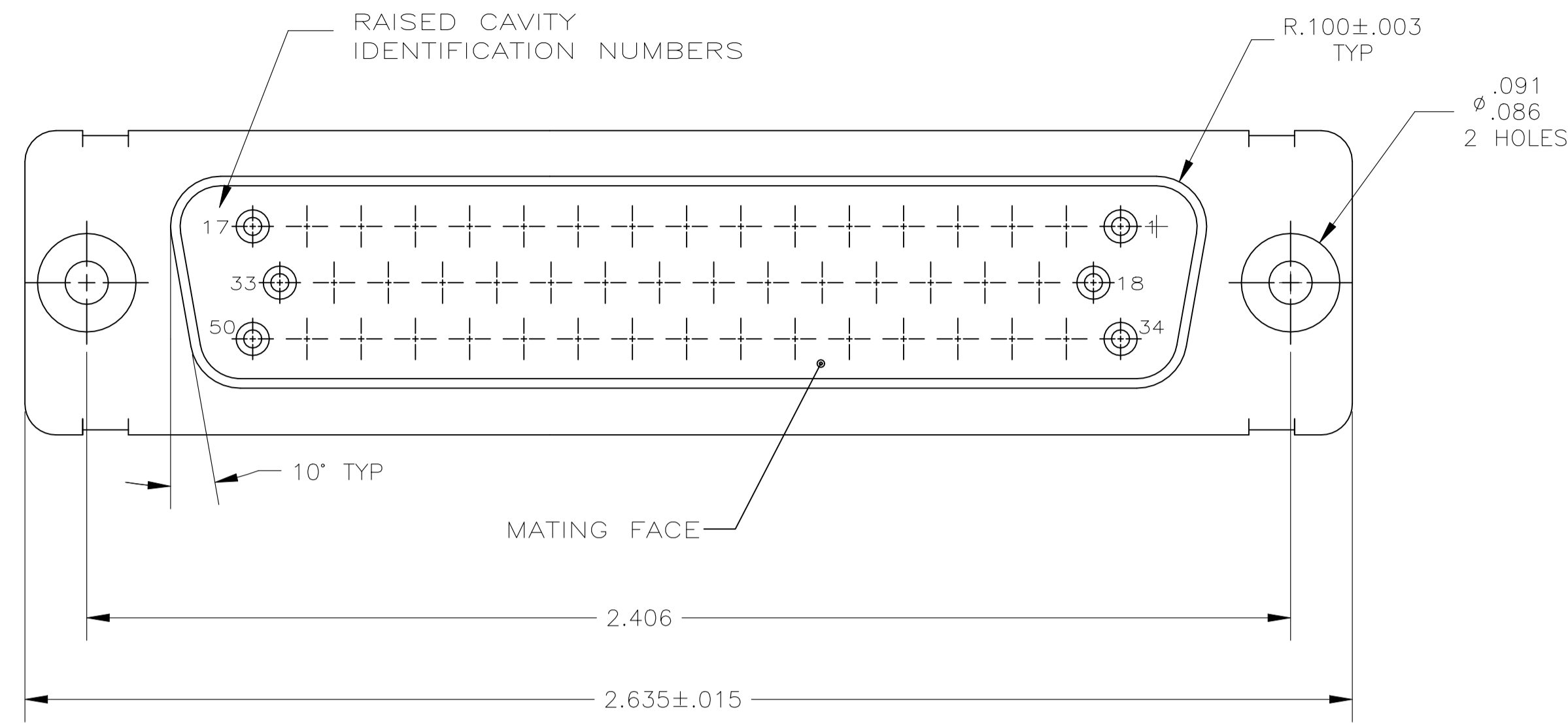
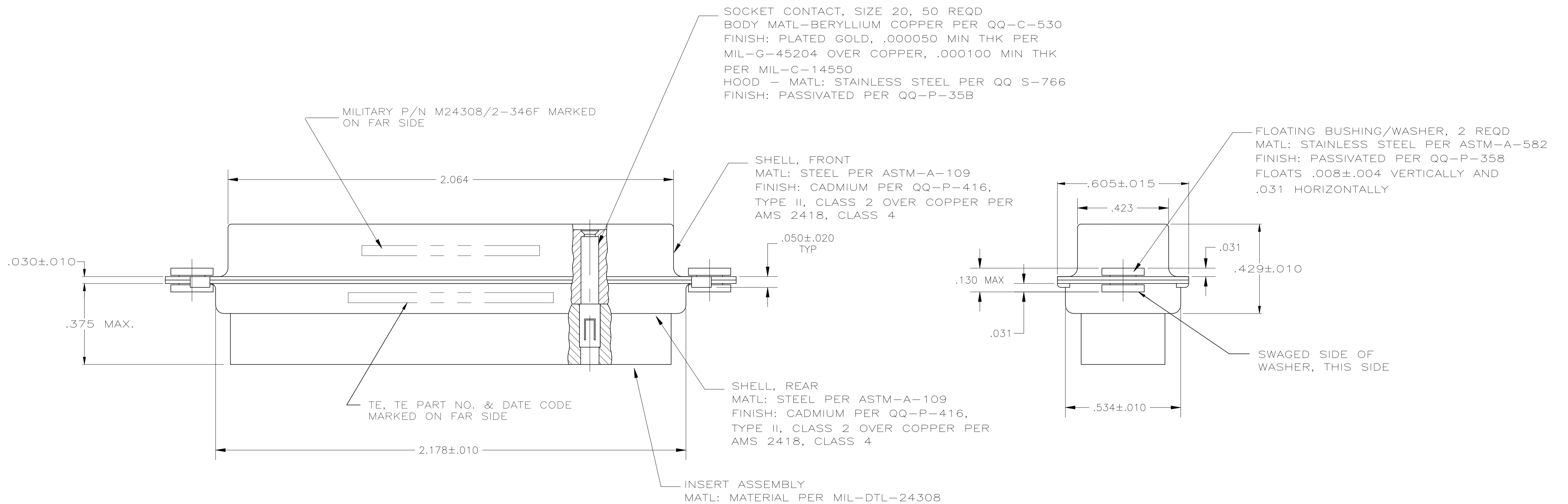


REVISIONS					
P	LTR	DESCRIPTION	DATE	DN	APVD
G		REVISED PER ECN-24-269746	11JUN2024	PE	DS



INSERTION/EXTRACTION TOOL $\triangle 8$



- THIS RECEPTACLE WILL MATE WITH ANY 50 POSN, SIZE 5 PLUG IN AMPLIMITE SERIES
- MAXIMUM WIRE INSULATION TO BE USED WITH THIS RECEPTACLE IS .068 DIA
- SST RETENTION CLIPS ARE INCLUDED IN INSERTS
- $\triangle 4$ PACKAGE STAMPED M24308/2-486F & TE PART NUMBER 211529-1
- $\triangle 5$ PACKAGE STAMPED M24308/2-346F & TE PART NUMBER 211529-2
- $\triangle 6$ PACKAGE STAMPED M24308/2-357F & TE PART NUMBER 211529-3
- $\triangle 7$ TE P/N 205090-1, MIL P/N 63-368, INCLUDED IN KIT
- $\triangle 8$ TE P/N 91067-2, MIL P/N M81969/1-02
- $\triangle 9$ CONNECTOR SUPPLIED WITHOUT CONTACTS, SHOWN FOR ILLUSTRATION ONLY
- $\triangle 10$ FOR CONNECTOR ASSEMBLIES, TE CONTACT PART NOS. 205090-1 MUST BE ORDERED SEPARATELY. CONNECTORS WITH CONTACTS ARE SUPPLIED WITH CONTACT 205090-1

WARNING - THIS DOCUMENT CONTAINS TECHNOLOGY WHOSE EXPORT IS RESTRICTED BY THE EXPORT ADMINISTRATION REGULATIONS ("EAR") PURSUANT TO 15 C.F.R. PARTS 730-774. VIOLATIONS OF THE EAR ARE SUBJECT TO SEVERE CRIMINAL PENALTIES UNDER THE EXPORT CONTROL REFORM ACT, AS AMENDED (TITLE 50, U.S.C., SEC. 4801, ET SEQ.).

211529-3 OBSOLETE	SAME AS -1 EXCEPT $\triangle 6 \triangle 7 \triangle 8 \triangle 10$	211529-3
211529-2 OBSOLETE	SAME AS -1 EXCEPT $\triangle 5 \triangle 7 \triangle 10$	211529-2
	AS SHOWN $\triangle 4 \triangle 9 \triangle 10$	211529-1
DESCRIPTION		PART NO.

THIS DRAWING IS A CONTROLLED DOCUMENT.		DIN 27-May-15 MANJUNATH G M		TE Connectivity	
DIMENSIONS: INCHES		CHK 27-May-15 CHARLES THOMAS		NAME	
TOLERANCES UNLESS OTHERWISE SPECIFIED:		APVD 27-May-15 CHARLES THOMAS		RECEPTACLE ASM, AMPLIMITE, 50 POSITION, SZ 5, SER 109, W/DUAL FLOATING BUSHING	
0. PLC	± .005	APPLICATION SPEC		SIZE	
1. PLC	± .005	WEIGHT		CAGE CODE	
2. PLC	± .005	CUSTOMER DRAWING		DRAWING NO	
3. PLC	± .005	SCALE 4:1		SHEET 1 of 1	
4. PLC	± .005	REV G		RESTRICTED TO	
ANGLES	± .005				
MATERIAL	FINISH				