

4

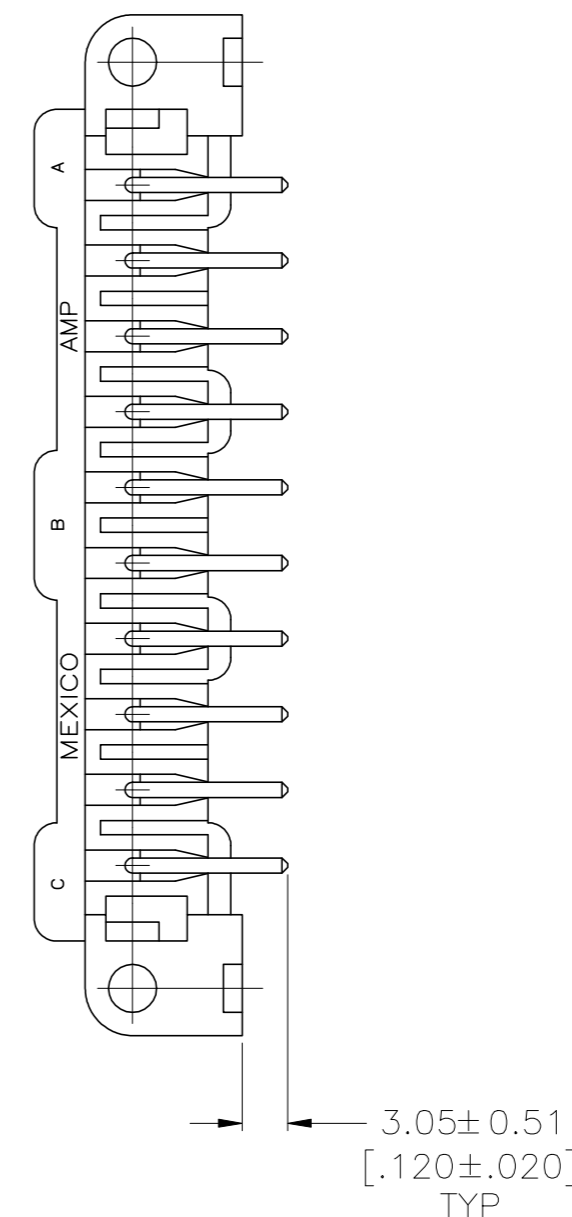
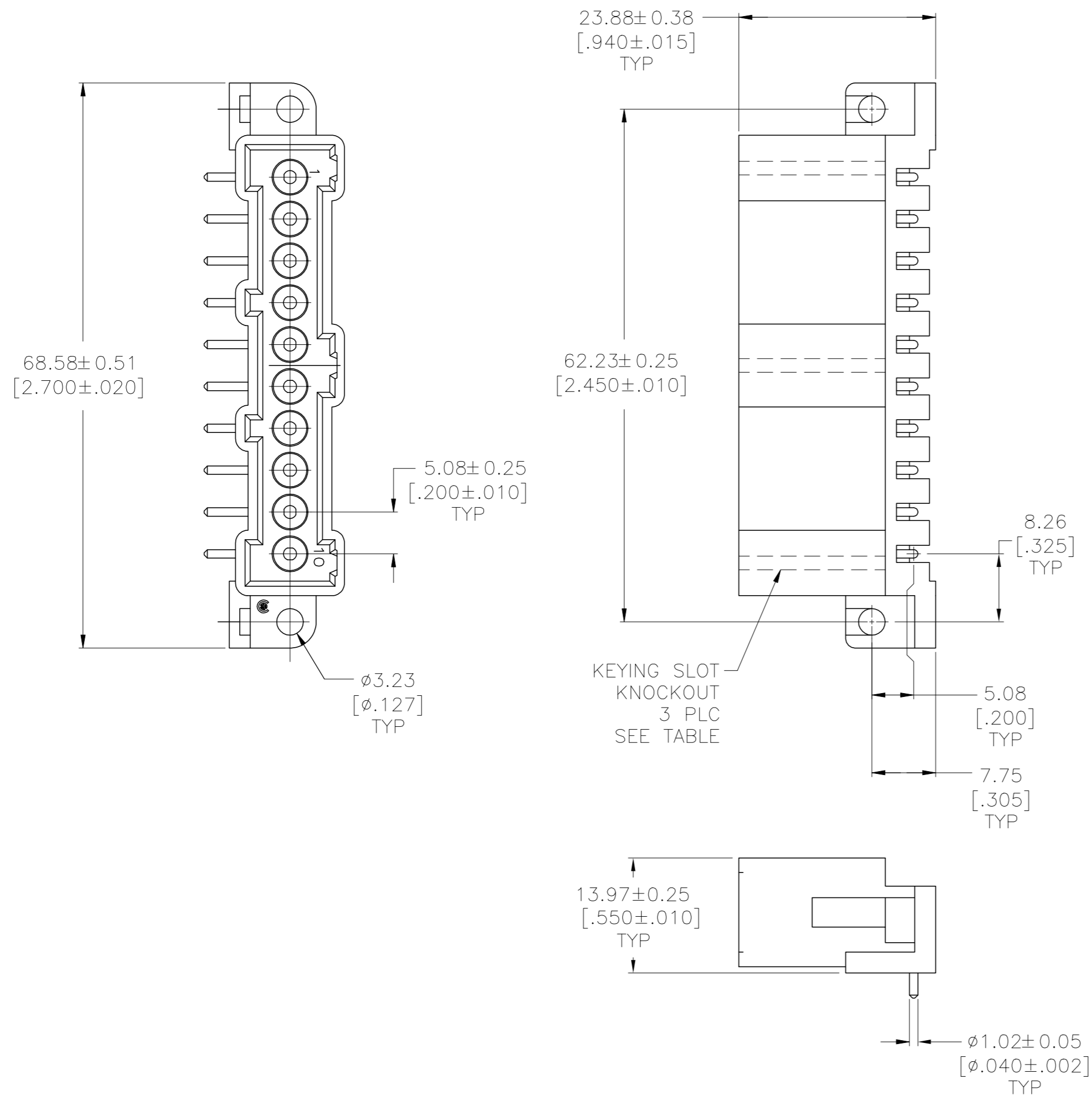
3

2

1

THIS DRAWING IS UNPUBLISHED. RELEASED FOR PUBLICATION. ALL RIGHTS RESERVED. © COPYRIGHT - TE Connectivity

REVISIONS					
P	LTR	DESCRIPTION	DATE	DWN	APVD
	K	REVISED PER ECR-05-5072	27JUN2005	SW	GS
	K1	REVISED PER ECO-09-021826	12JAN10	KK	AEG
	L	REVISED PER ECO-17-011181	04AUG2017	RS	MZ
	M	REVISED PER ECO-18-000443	30JAN2018	RS	MZ



- 1 TIN-LEAD PLATED CONTACTS.
- 2 TIN PLATED CONTACTS.
- 3 OBSOLETE PARTS: OBSOLETE CIS STREAMLINING PER D.RENAUD/D.SINISI
- 4 HOUSING MATERIAL: PA66, BLACK, UL 94 V-0 RATED.

NOTES	MATERIAL REMOVED FROM KEYING SLOT	PART NUMBER
3 OBSOLETE	1 A & C	3-208403-5
	2 B	3-208403-4
	2 A	3-208403-3
	2 -	3-208403-2
OBSOLETE	1 B	2-208403-1
OBSOLETE	1 A	1-208403-1
OBSOLETE	1 -	208403-1

THIS DRAWING IS A CONTROLLED DOCUMENT. DWN L.SIPE 08/25/92. CHK R.STONE 9-4-92. APVD -

DIMENSIONS: mm [INCHES]. TOLERANCES UNLESS OTHERWISE SPECIFIED: 0 PLC ± -, 1 PLC ± -, 2 PLC ± 0.13 [.005], 3 PLC ± -, 4 PLC ± -, ANGLES ± -.

MATERIAL 4. FINISH -.

TE Connectivity Ltd. HEADER ASSEMBLY, 10 POSN, PIN, METRIMATE. SIZE A2, CAGE CODE 00779, DRAWING NO. 208403, RESTRICTED TO -.

CUSTOMER DRAWING. SCALE 2:1. SHEET 1 of 1. REV N.