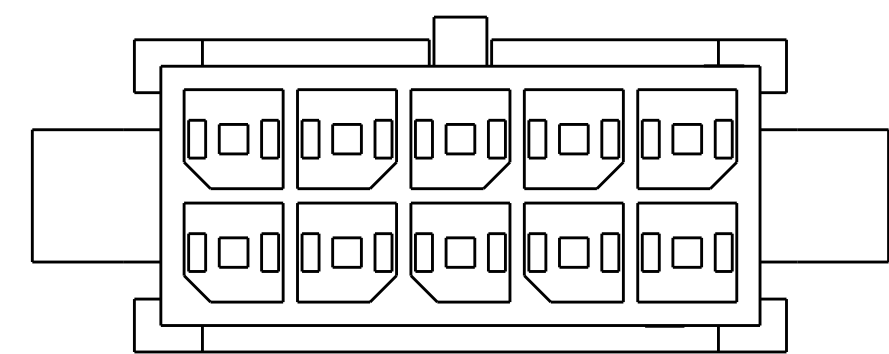
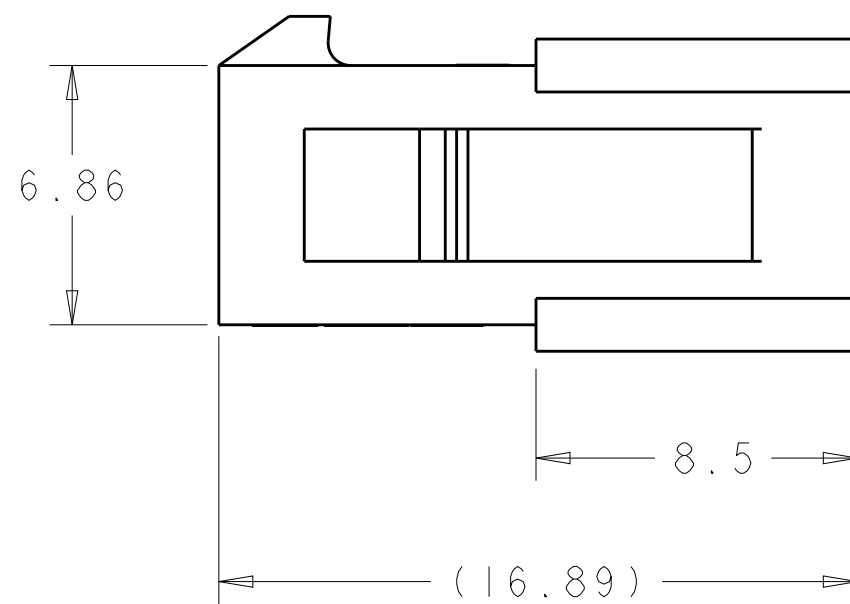
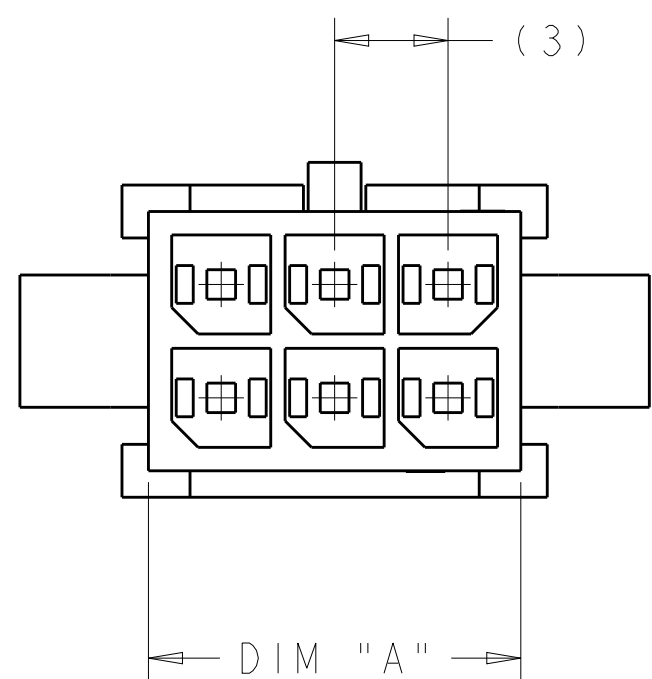
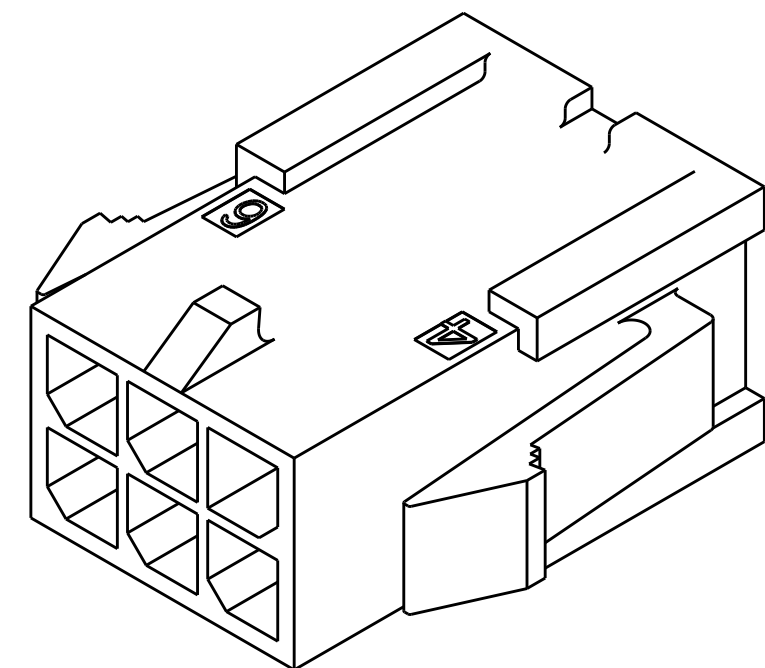
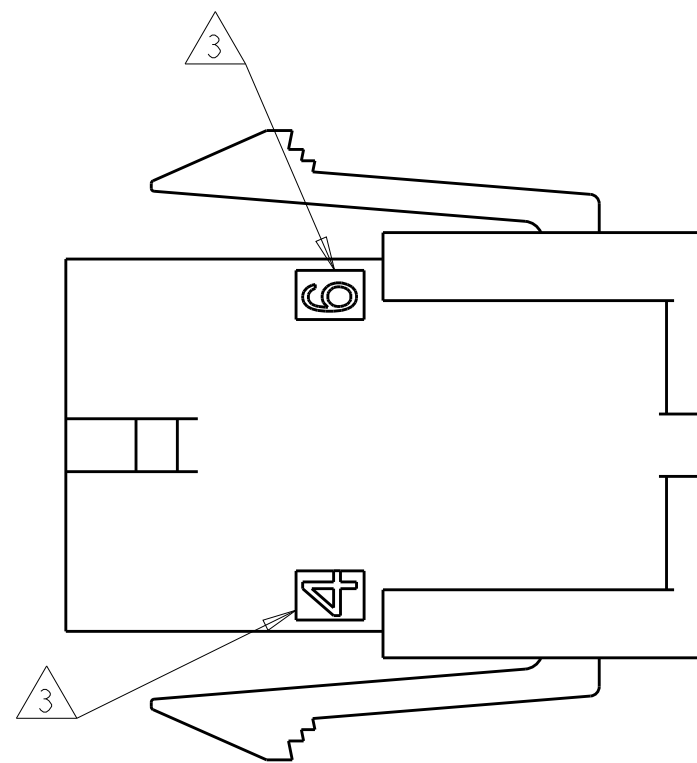
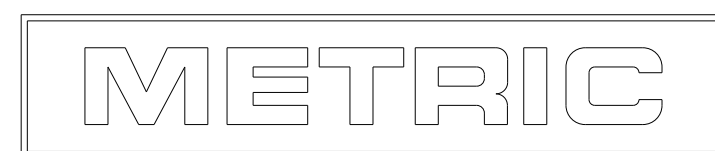
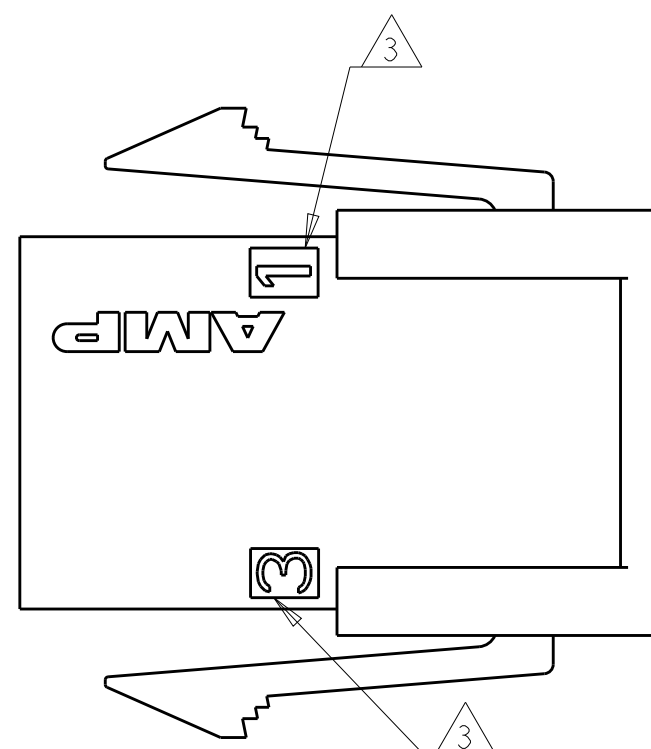
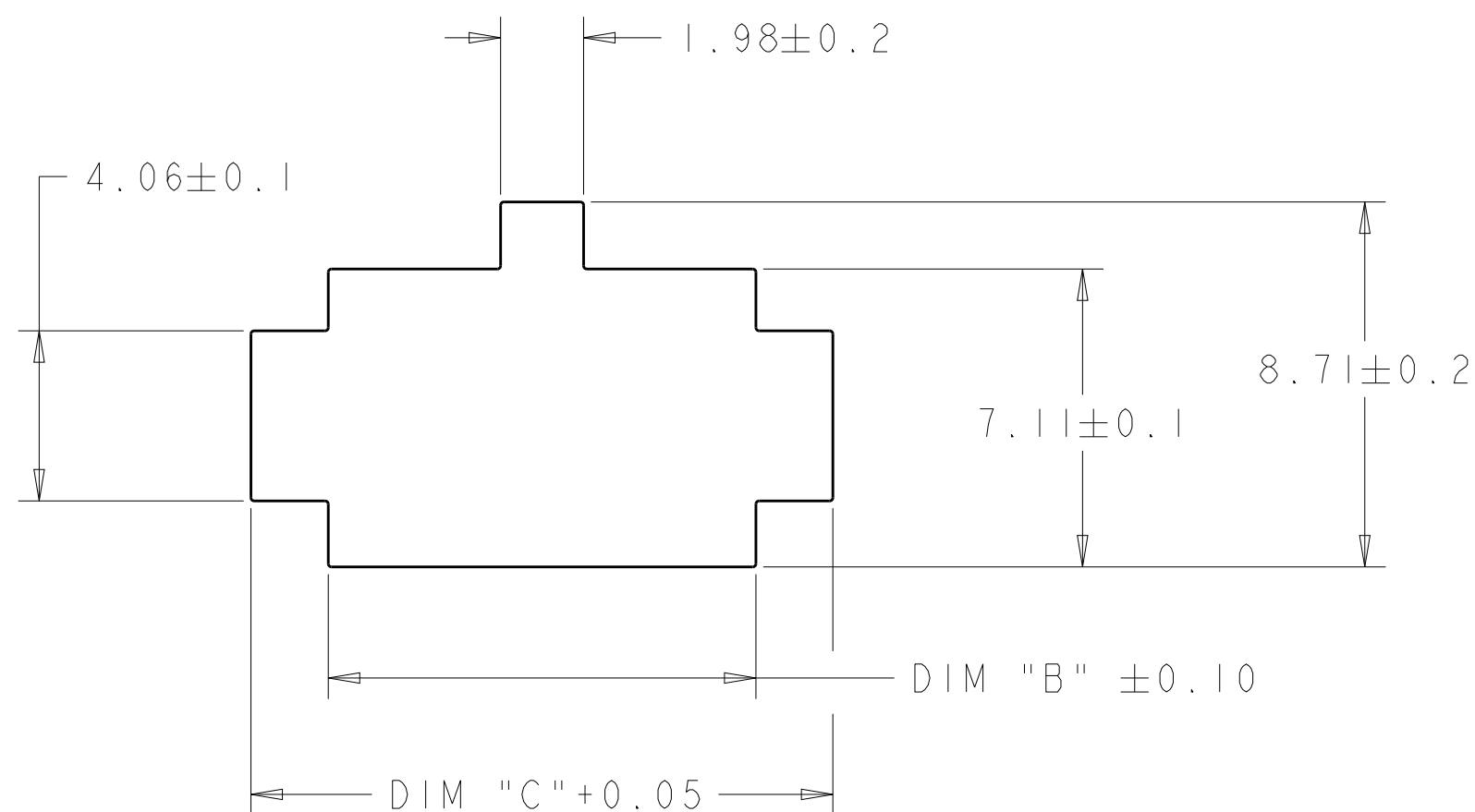


LOC	DIST	REVISIONS				
CM	00	P	LTR	DESCRIPTION	DATE	DWN
			A	ECO-08-006054	11MAR2008	KW
			A1	ECO-19-004882	10APR2019	AP

- 1 RECOMMENDED PANEL THICKNESS 1.57-2.3.
2. PANEL MUST BE PUNCHED SO THAT HOUSING ENTERS THE PANEL IN THE SAME DIRECTION AS THE PUNCH.
- 3 CIRCUIT IDENTIFIERS LOCATED APPROXIMATELY AS SHOWN.



KEYING FOR 1-2029078-0



PANEL CUT-OUT 1

1128.78	19.88	16.2	15.85	10	1-2029078-0
778.28	13.88	10.2	9.85	6	2029078-6
VOLUME mm ³	DIM C	DIM B	DIM A	NO OF POS.	PART NO.
THIS DRAWING IS A CONTROLLED DOCUMENT FOR TYCO ELECTRONICS CORPORATION. IT IS SUBJECT TO CHANGE AND THE CONTROLLING ENGINEERING ORGANIZATION SHOULD BE CONTACTED FOR THE LATEST REVISION.					
DIMENSIONS: mm		TOLERANCES UNLESS OTHERWISE SPECIFIED:		DWN K. WHITAKER 11MAR2008 CHK C. JONES 11MAR2008 APVD C. JONES 11MAR2008	
0 PLC ± 1 PLC ± 2 PLC ±0.13 3 PLC ± 4 PLC ± ANGLES ± FINISH		PRODUCT SPEC 108-1836 APPLICATION SPEC 114-13000 WEIGHT -		NAME PLUG HOUSING, DUAL ROW, PANEL MOUNT, MICRO MATE-N-LOK MICRO MATE-N-LOK(TM)	
MATERIAL NYLON, UL94V-0 NATURAL		CUSTOMER DRAWING		SIZE A2	CAGE CODE 00779
				DRAWING NO C-2029078	RESTRICTED TO
				SCALE 5:1	SHEET 1 OF 1
				REV A1	