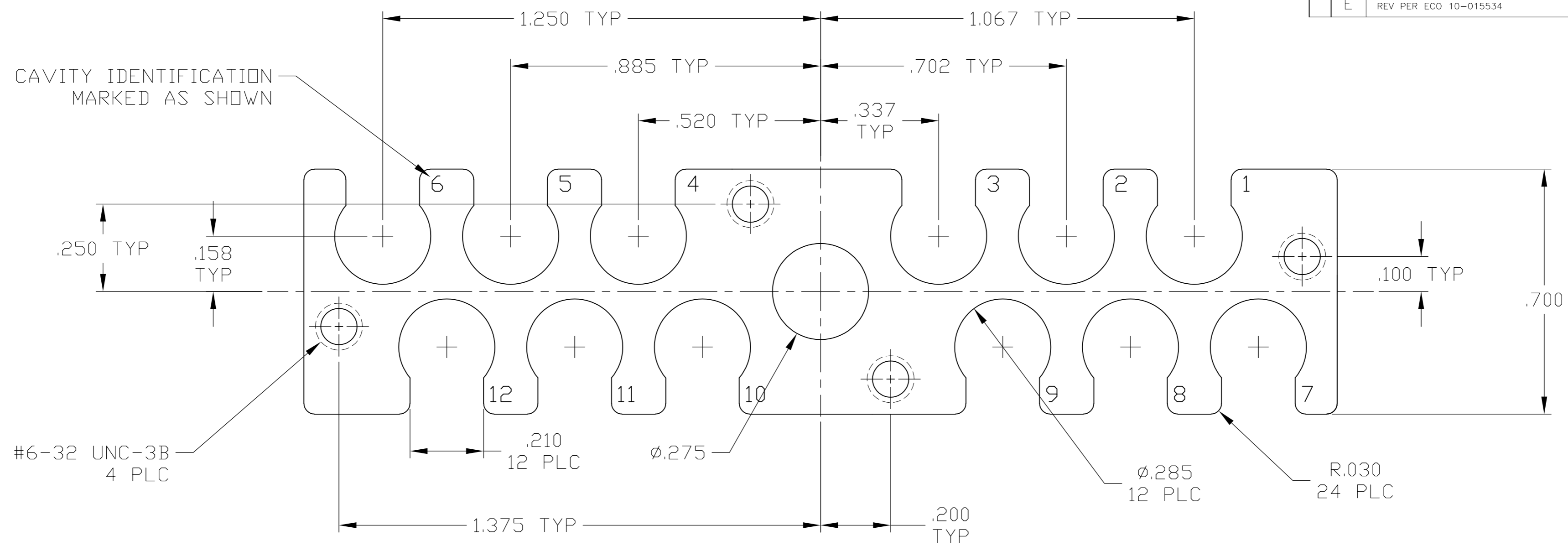


THIS DRAWING IS UNPUBLISHED. RELEASED FOR PUBLICATION - N/A .
 © COPYRIGHT N/A BY TYCO ELECTRONICS CORPORATION. ALL RIGHTS RESERVED.

LOC	DIST	REVISIONS			
P	LTR	DESCRIPTION	DATE	DWN	APVD
-	-	REV PER ECO 10-015534	8-24-10	CT	DM

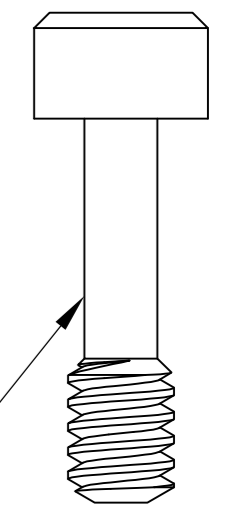


#6-32 UNC-3B
4 PLC

CUSTOMER PART NO OR TE PART NO,
(PER TABLE),TE LOGO AND DATE CODE
MARKED IN APPROX AREA ON EITHER
END OR SIDES

ORIENTATION OF SEAL BOOT PLATE FOR RECEPTACLE APPLICATIONS SHOWN
SEE SHEET #2 FOR ORIENTATION FOR PLUG APPLICATIONS

#6-32 UNC-3A X .50 LONG
CAPTIVE SCREW
(QTY = 4)
MAT'L: STAINLESS STEEL
(SHIPPED UNASSEMBLED
& PACKAGED SEPARATELY)



- 1 MAT'L: ALUMINUM ALLOY 6061-T6 OR DIE CAST PER ASTM B85.
- 2 FINISH: BLACK ANODIZE; HARD ANODIZED COAT .00150 MIN THK PER MIL-A-8625, TYPE III, CLASS 2.

1996544-2	---	1996544-2
---	BACC10NJ1	1996544-1
MARKED TE PART NO	MARKED CUST PART NO	PART NO.

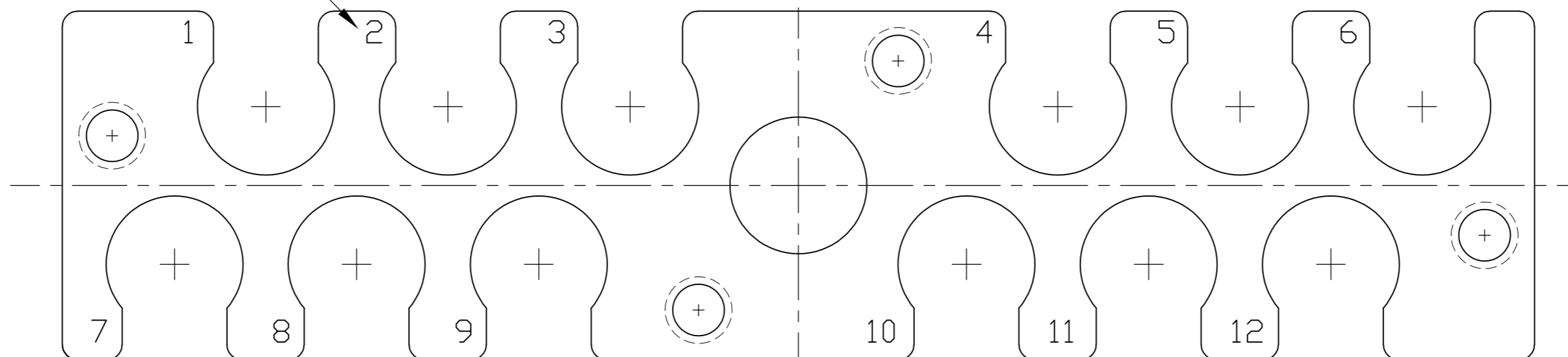
THIS DRAWING IS A CONTROLLED DOCUMENT.		DWN C.C.THOMAS 1-21-08	Tyco Electronics Corporation Harrisburg, PA 17105-3608	
DIMENSIONS: INCHES		CHK D.MILLER 1-21-08	NAME D.MILLER 1-21-08	
TOLERANCES UNLESS OTHERWISE SPECIFIED:		APVD D.MILLER 1-21-08	PRODUCT SPEC	
0 PLC ± -		APPLICATION SPEC		
1 PLC ± -		WEIGHT -		
2 PLC ± -		SIZE A2		
3 PLC ± .005		CAGE CODE 00779		
4 PLC ± -		DRAWING NO C=1996544		
ANGLES ± -		RESTRICTED TO -		
FINISH 1		SCALE 2:1		
FINISH 2		SHEET 1 of 2		
MATERIAL -		REV E		
CUSTOMER DRAWING				

1996544

THIS DRAWING IS UNPUBLISHED. RELEASED FOR PUBLICATION - N/A .
 © COPYRIGHT N/A BY TYCO ELECTRONICS CORPORATION. ALL RIGHTS RESERVED.

LOC		DIST		REVISIONS			
P	LTR	DESCRIPTION	DATE	DWN	APVD		
-	-	SEE SHEET 1	-	-	-		

CAVITY IDENTIFICATION
MARKED AS SHOWN



ORIENTATION OF SEAL BOOT PLATE FOR PLUG APPLICATIONS

THIS DRAWING IS A CONTROLLED DOCUMENT.		DWN C.C.THOMAS 1-21-08	Tyco Electronics Corporation Harrisburg, PA 17105-3608	
DIMENSIONS: INCHES		CHK D.MILLER 1-21-08		
		APVD D.MILLER 1-21-08	NAME SEAL BOOT RETENTION PLATE 12 POSITION, QUADRAX	
TOLERANCES UNLESS OTHERWISE SPECIFIED:		PRODUCT SPEC	SIZE A2	
0 PLC ± -		APPLICATION SPEC	CAGE CODE 00779	DRAWING NO 1996544
1 PLC ± -		WEIGHT	RESTRICTED TO	
2 PLC ± -		CUSTOMER DRAWING		
3 PLC ± .005		SCALE 2:1	SHEET 2 of 2	
4 PLC ± -		REV E		
ANGLES ± -				
FINISH				
MATERIAL - 1	FINISH - 2			