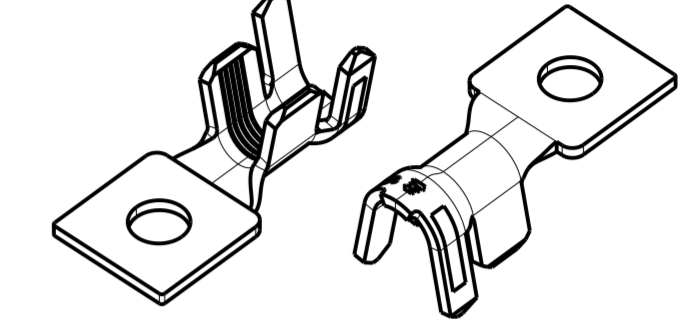
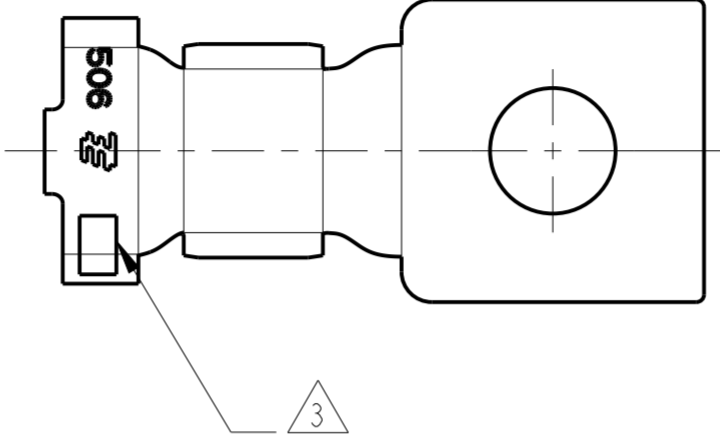
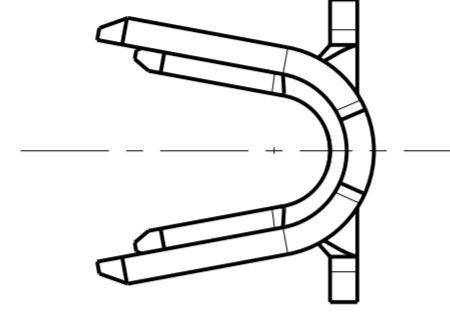
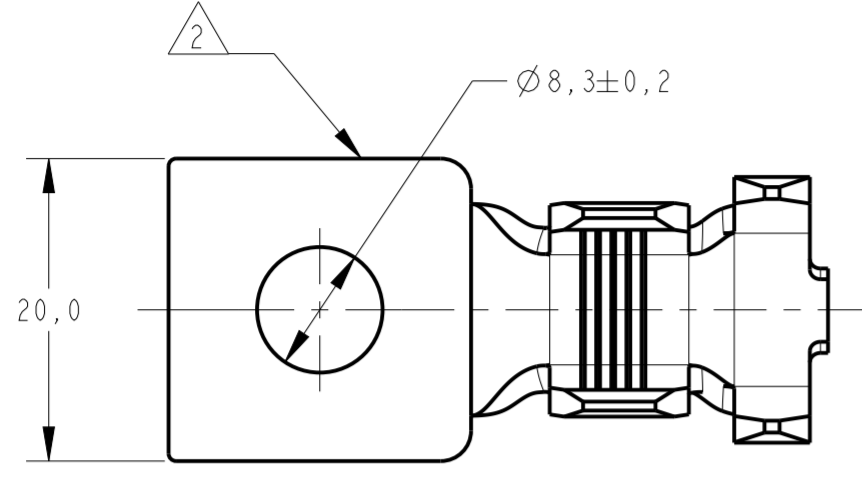


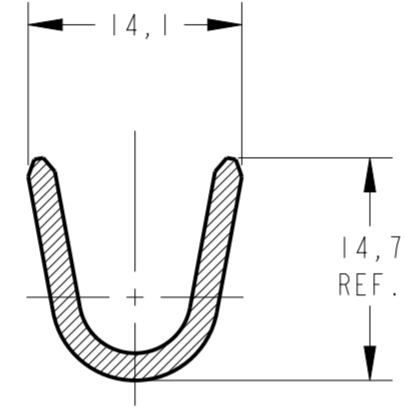
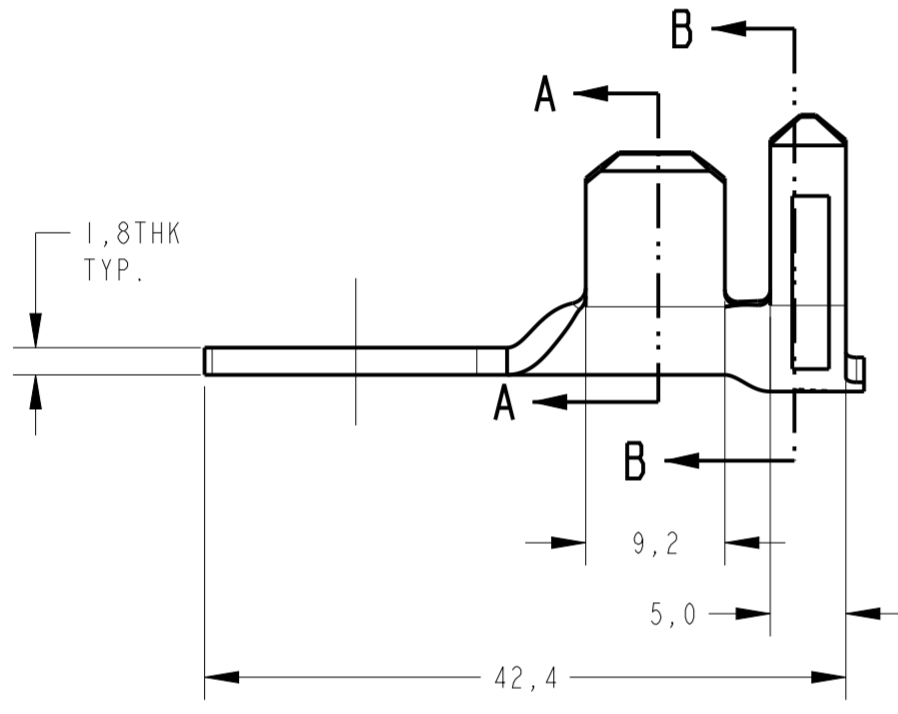
THIS DRAWING IS UNPUBLISHED. RELEASED FOR PUBLICATION 20
 © COPYRIGHT 20 ALL RIGHTS RESERVED.

Loc	DIST	REVISIONS					
AP	-	P	LTR	DESCRIPTION	DATE	DWN	APVD
		A1		REVISED DESIGN ECO-12-011488	21JUN2012	NCL	DAO
		B		REVISED DESIGN BY ECO-12-018479	26OCT2012	PP	NMS
		B1		REVISED BY ECO-20-017620	15DEC2020	LAA	NMS
		C		REVISE BY ECN-21-103306	07MAY2021	PSB	NMS

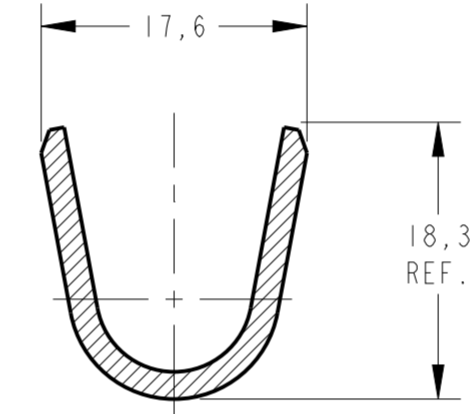
1989938-1 / 1989938-2



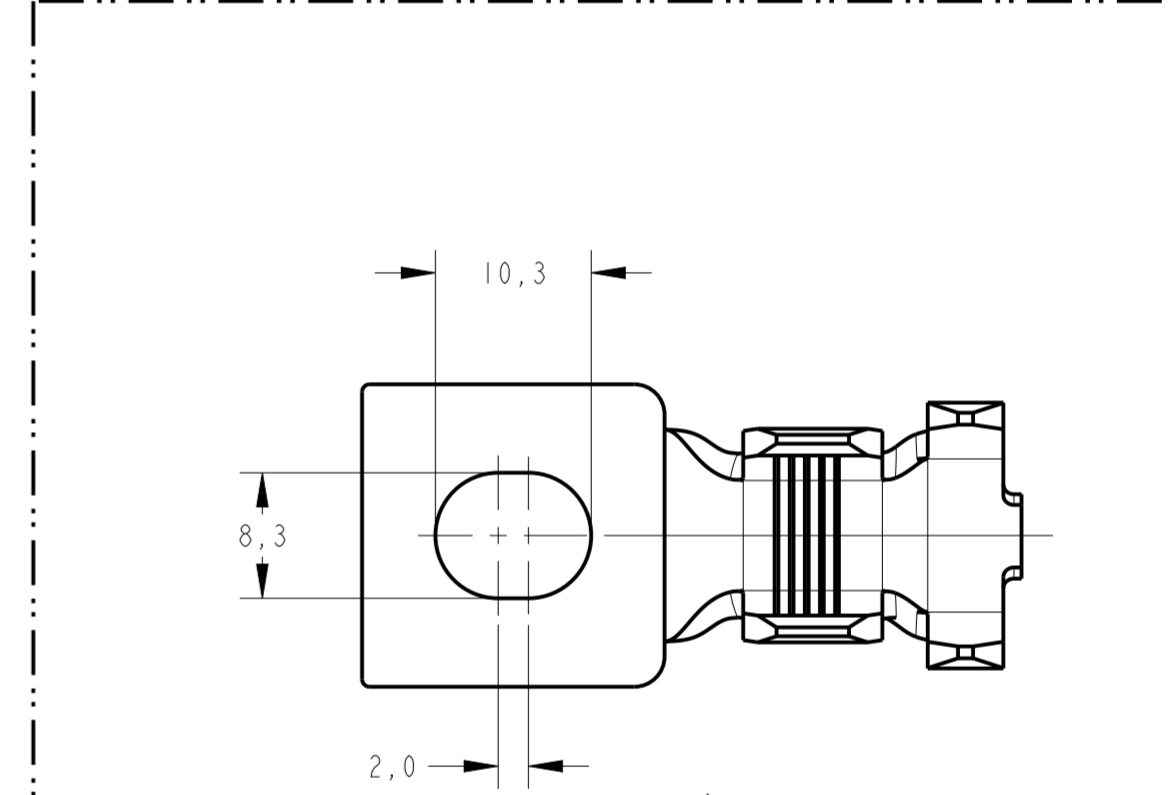
PERSPECTIVE VIEWS
SCALE 1:1



SECTION A-A
SCALE 2:1

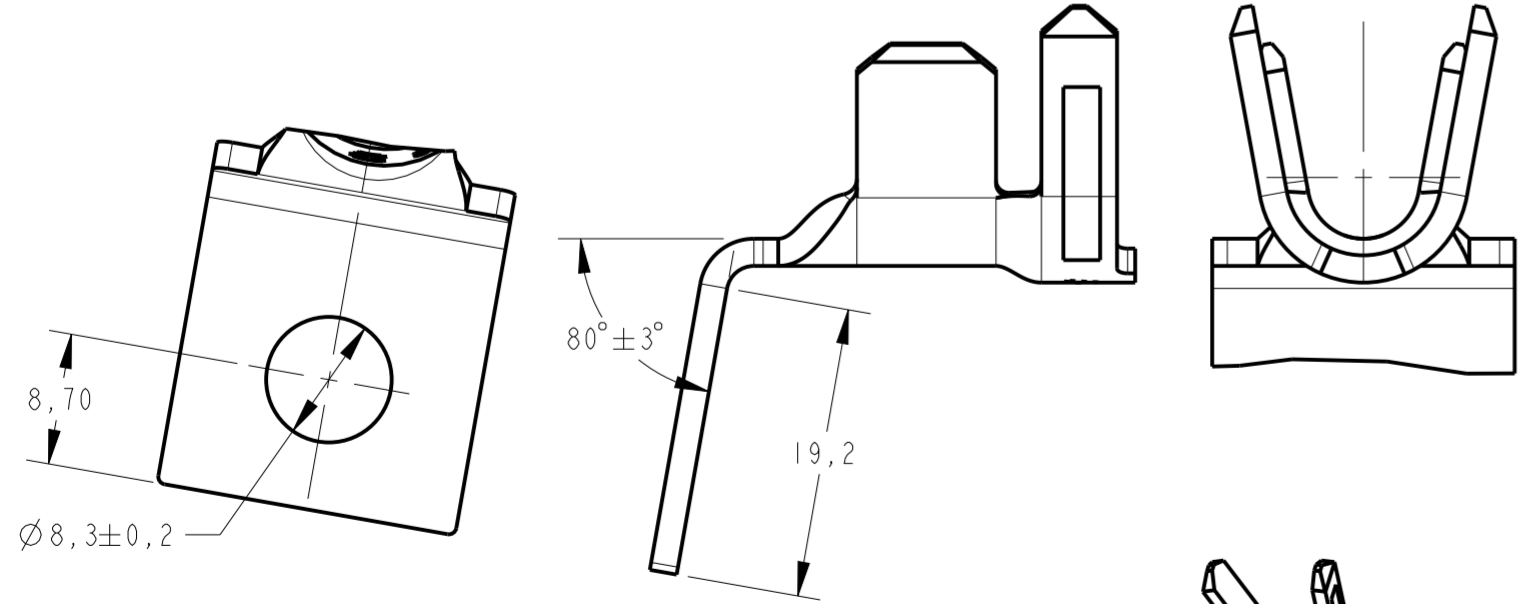


SECTION B-B
SCALE 2:1



1989938-3 / 1989938-4

- 1 - É REQUERIDA A PRÉVIA APROVAÇÃO PELA ENGENHARIA DE PRODUTO TE PARA AUTORIZAÇÃO DE FORNECIMENTO DA PEÇA.
- TE PRODUCT ENGINEERING APPROVAL IS REQUIRED PRIOR TO AUTHORIZATION OF PART SUPPLY.
- 2 - REGIÃO DE CORTE DO CARRIER
- REGION OF CUT OF CARRIER
- 3 - LETRA DE REVISÃO DA PEÇA
- PART REVISION LETTER



1989938-5 / 1989938-6

LOOSE PIECE	ESTANHADO SOBRE NIQUEL TIN OVER NICKEL	LATÃO/BRASS	5	1989938-6
LOOSE PIECE	NU / PLAIN	LATÃO/BRASS	5	1989938-5
LOOSE PIECE	ESTANHADO / TIN PLATED	LATÃO/BRASS	4	1989938-4
LOOSE PIECE	NU / PLAIN	LATÃO/BRASS	4	1989938-3
LOOSE PIECE	ESTANHADO / TIN PLATED	LATÃO/BRASS		1989938-2
LOOSE PIECE	NU / PLAIN	LATÃO/BRASS		1989938-1
WIRE RANGE		INSUL. RANGE	SUPPLIED	
25 - 35mm ²		Ø8,5~11,5mm	FINISH	
		MATERIAL	PART NUMBER	



THIS DRAWING IS A CONTROLLED DOCUMENT.		DWN	25MAY2010
DIMENSIONS:		CHK	28MAY2010
mm		APVD	28MAY2010
TOLERANCES UNLESS OTHERWISE SPECIFIED:		NAME	
0 PLC	±	R.K.S.T.I.E.M.E	
1 PLC	±0,3	C.G.MARTINS	
2 PLC	±	D.A.OLIVEIRA	
3 PLC	±	PRODUCT SPEC	
4 PLC	±	APPLICATION SPEC	
ANGLES	±°	WEIGHT	
FINISH		- / -	
MATERIAL	SEE TABLE	SEE TABLE	

STE TE Connectivity			
NAME			
- TERMINAL RING TONGUE M8			
SIZE	CAGE CODE	DRAWING NO	RESTRICTED TO
A2	-	G-1989938	-
Customer Drawing		SCALE 2:1	SHEET 1 OF 1 REV C