

THIS DRAWING IS UNPUBLISHED.

RELEASED FOR PUBLICATION

© COPYRIGHT - TE Connectivity Ltd.

ALL RIGHTS RESERVED.

REVISIONS

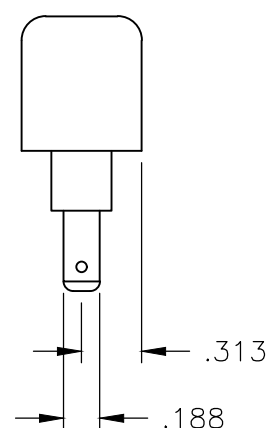
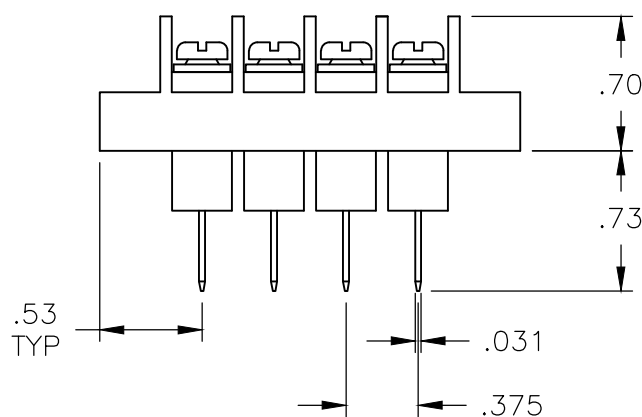
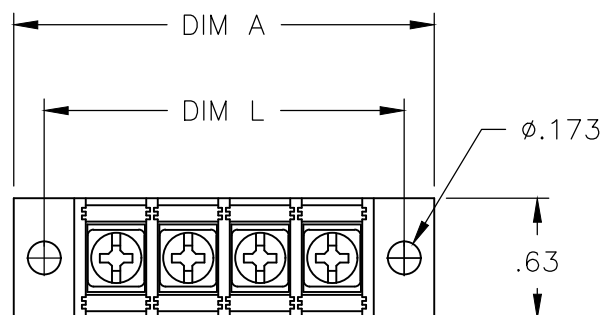
P	LTR	DESCRIPTION	DATE	DWN	APVD
	A	PART STATUS UPDATED	24JAN2018	RK	PS

MATERIAL:
 HOUSING: THERMOPLASTIC, UL94V-0, BLACK.
 TERMINALS: BRIGHT TIN OVER COPPER ALLOY.
 SCREWS: 6-32, STEEL, ZINC PLATING W/ CLEAR CHROMATE.

ELECTRICAL:
 UL/CSA
 CLASS C: 20A, 300V.
 CLASS D: 5A, 600V.
 WIRE RANGE: 12-22 AWG.

MECHANICAL:
 RECOMMENDED TORQUE: 7 IN-LB.
 OPERATING TEMP.: 105°C MAX.

1 MARKED WITH WHITE PERMANENT INK.



OBSOLETE

DIM L	DIM A	NO OF POS	CATALOG NUMBER	TE NUMBER
9.000	9.314	23	JC6-F308-23	2-1986216-3
8.625	8.939	22	JC6-F308-22	2-1986216-2
8.250	8.564	21	JC6-F308-21	2-1986216-1
7.875	8.189	20	JC6-F308-20	2-1986216-0
7.500	7.814	19	JC6-F308-19	1-1986216-9
7.125	7.439	18	JC6-F308-18	1-1986216-8
6.750	7.064	17	JC6-F308-17	1-1986216-7
6.375	6.689	16	JC6-F308-16	1-1986216-6
6.000	6.314	15	JC6-F308-15	1-1986216-5
5.625	5.939	14	JC6-F308-14	1-1986216-4
5.250	5.564	13	JC6-F308-13-268	2-1986216-4
5.250	5.564	13	JC6-F308-13	1-1986216-3
4.875	5.189	12	JC6-F308-12	1-1986216-2
4.500	4.814	11	JC6-F308-11	1-1986216-1
4.125	4.439	10	JC6-F308-10	1-1986216-0
3.750	4.064	9	JC6-F308-09	1986216-9
3.375	3.689	8	JC6-F308-08	1986216-8
3.000	3.314	7	JC6-F308-07	1986216-7
2.625	2.939	6	JC6-F308-06	1986216-6
2.250	2.564	5	JC6-F308-05	1986216-5
1.875	2.189	4	JC6-F308-04	1986216-4
1.500	1.814	3	JC6-F308-03	1986216-3
1.125	1.439	2	JC6-F308-02	1986216-2

THIS DRAWING IS A CONTROLLED DOCUMENT.		DWN S SCHLEGEL 09JUL2007	STE TE Connectivity Ltd.		
DIMENSIONS: INCHES		CHK S YODER 7/9/07			
TOLERANCES UNLESS OTHERWISE SPECIFIED:		APVD S YODER 7/9/07	NAME		
0 PLC ± -		PRODUCT SPEC	JC6-F308-XX ASSEMBLY		
1 PLC ± -		APPLICATION SPEC	SIZE	CAGE CODE	DRAWING NO
2 PLC ± .01			A3	00779	C-1986216
3 PLC ± .005			RESTRICTED TO		
4 PLC ± -			-		
ANGLES ± -		WEIGHT	SCALE NTS SHEET 1 OF 2 REV A		
MATERIAL			CUSTOMER DRAWING		
FINISH					

4

3

2

1

THIS DRAWING IS UNPUBLISHED.

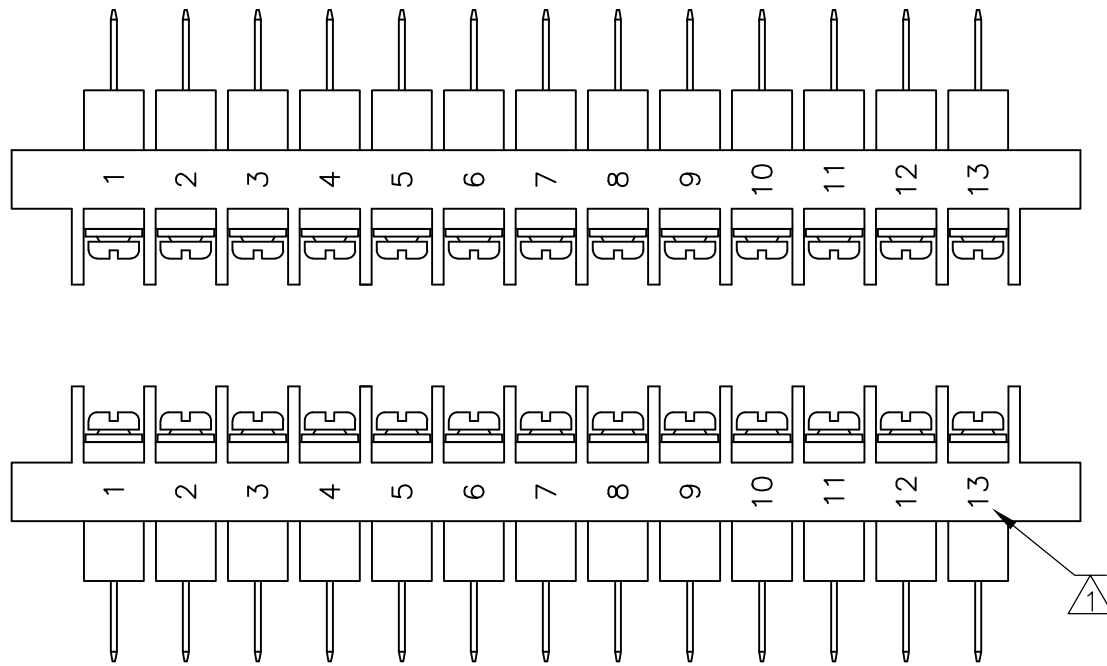
RELEASED FOR PUBLICATION

© COPYRIGHT - TE Connectivity Ltd.

ALL RIGHTS RESERVED.

REVISIONS

P	LTR	DESCRIPTION	DATE	DWN	APVD
-	-	SEE SHEET 1	-	-	-



~~2-1986216-4~~ OBSOLETE

THIS DRAWING IS A CONTROLLED DOCUMENT.

DWN S SCHLEGEL 09JUL2007

CHK S YODER 7/9/07

APVD S YODER 7/9/07

PRODUCT SPEC

APPLICATION SPEC

WEIGHT -

CUSTOMER DRAWING

STE TE Connectivity Ltd.

NAME

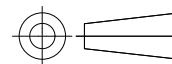
JC6-F308-XX ASSEMBLY

SIZE CAGE CODE DRAWING NO RESTRICTED TO

A3 00779 C-1986216 -

SCALE NTS SHEET 2 OF 2 REV A

DIMENSIONS:
INCHES



TOLERANCES UNLESS OTHERWISE SPECIFIED:

- 0 PLC ± -
- 1 PLC ± -
- 2 PLC ± .01
- 3 PLC ± .005
- 4 PLC ± -
- ANGLES ± -

MATERIAL

FINISH

-

-