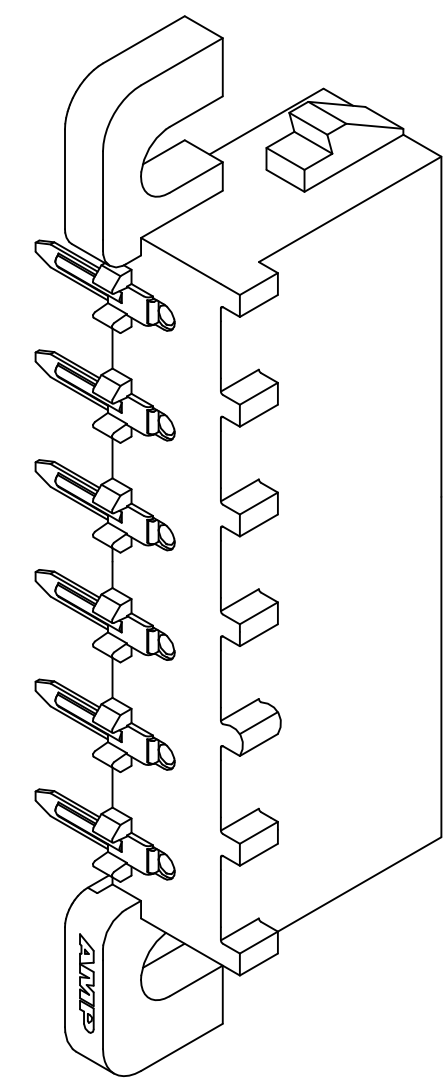
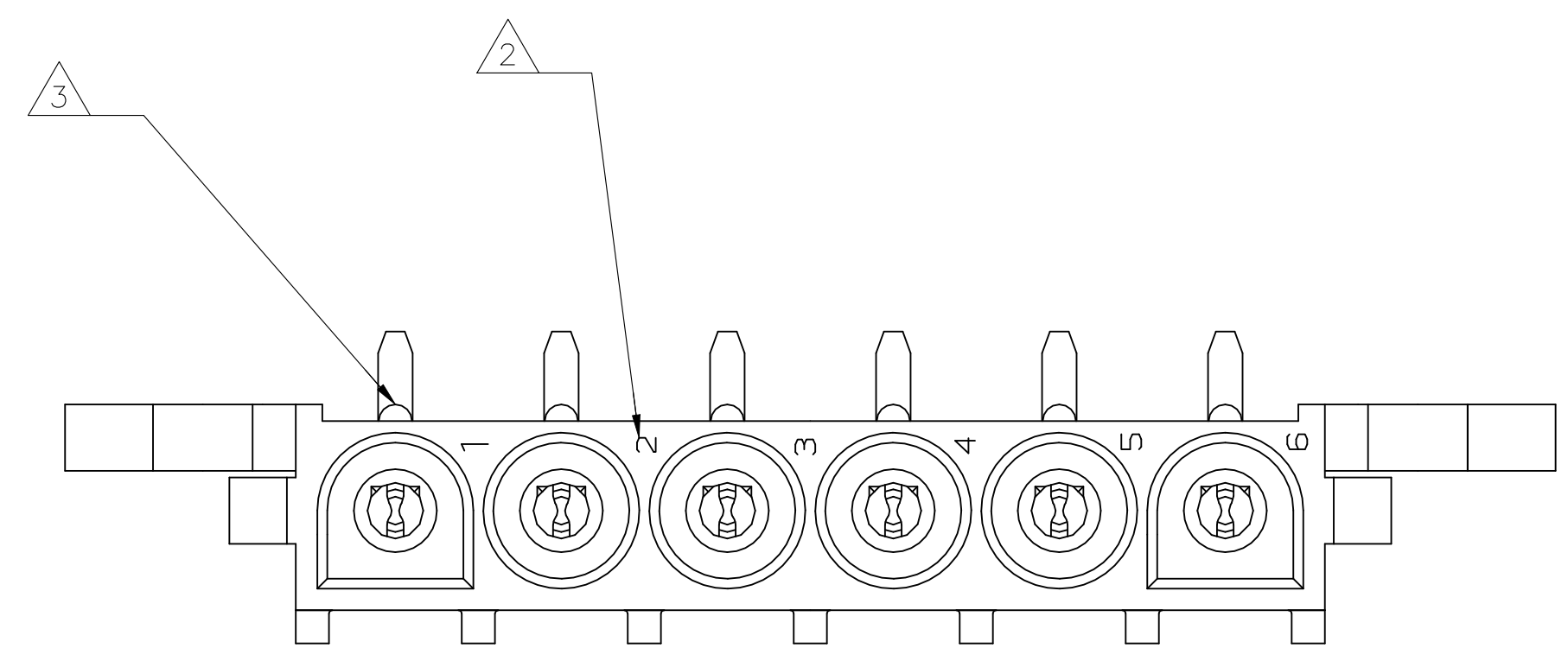
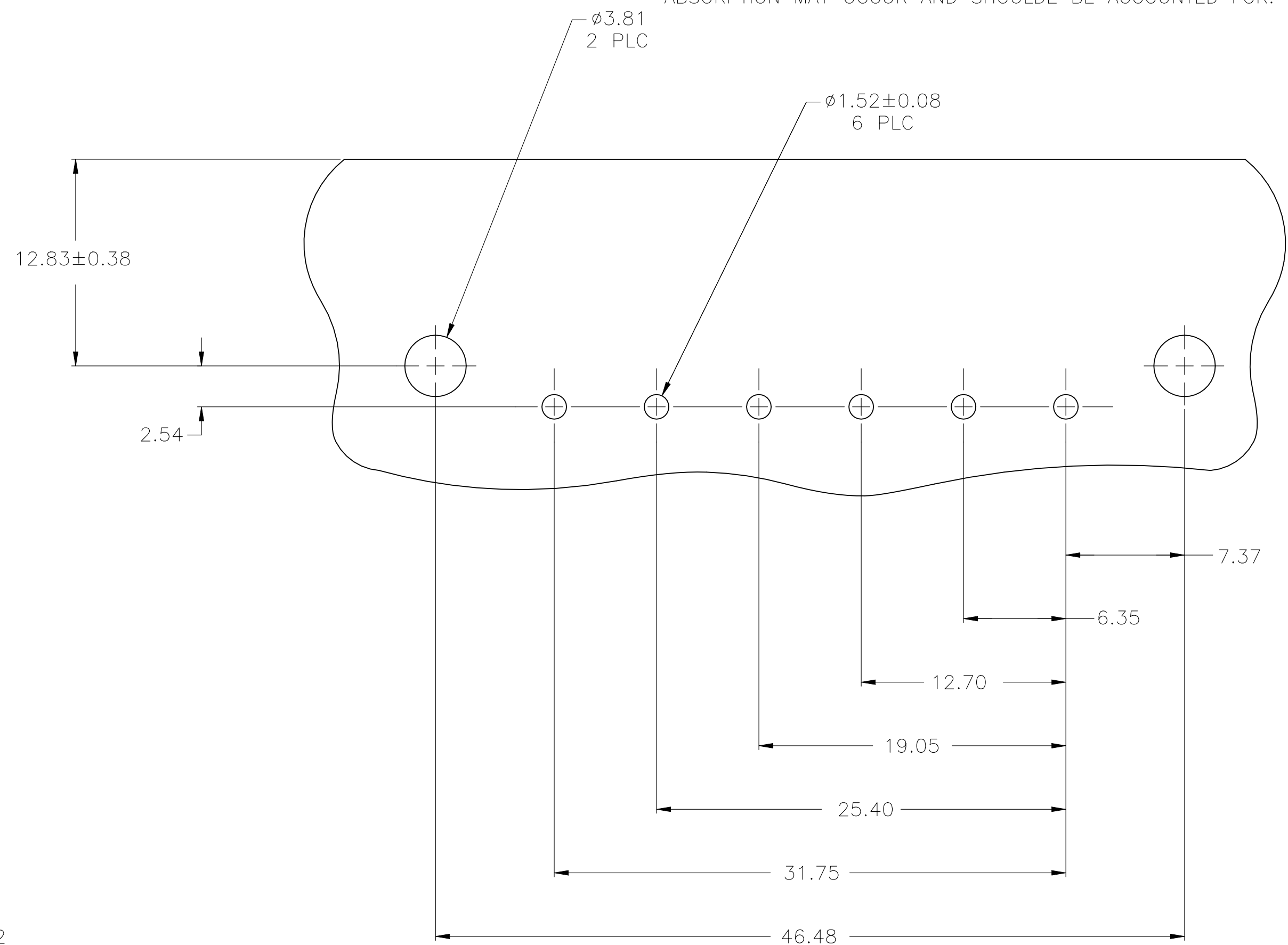
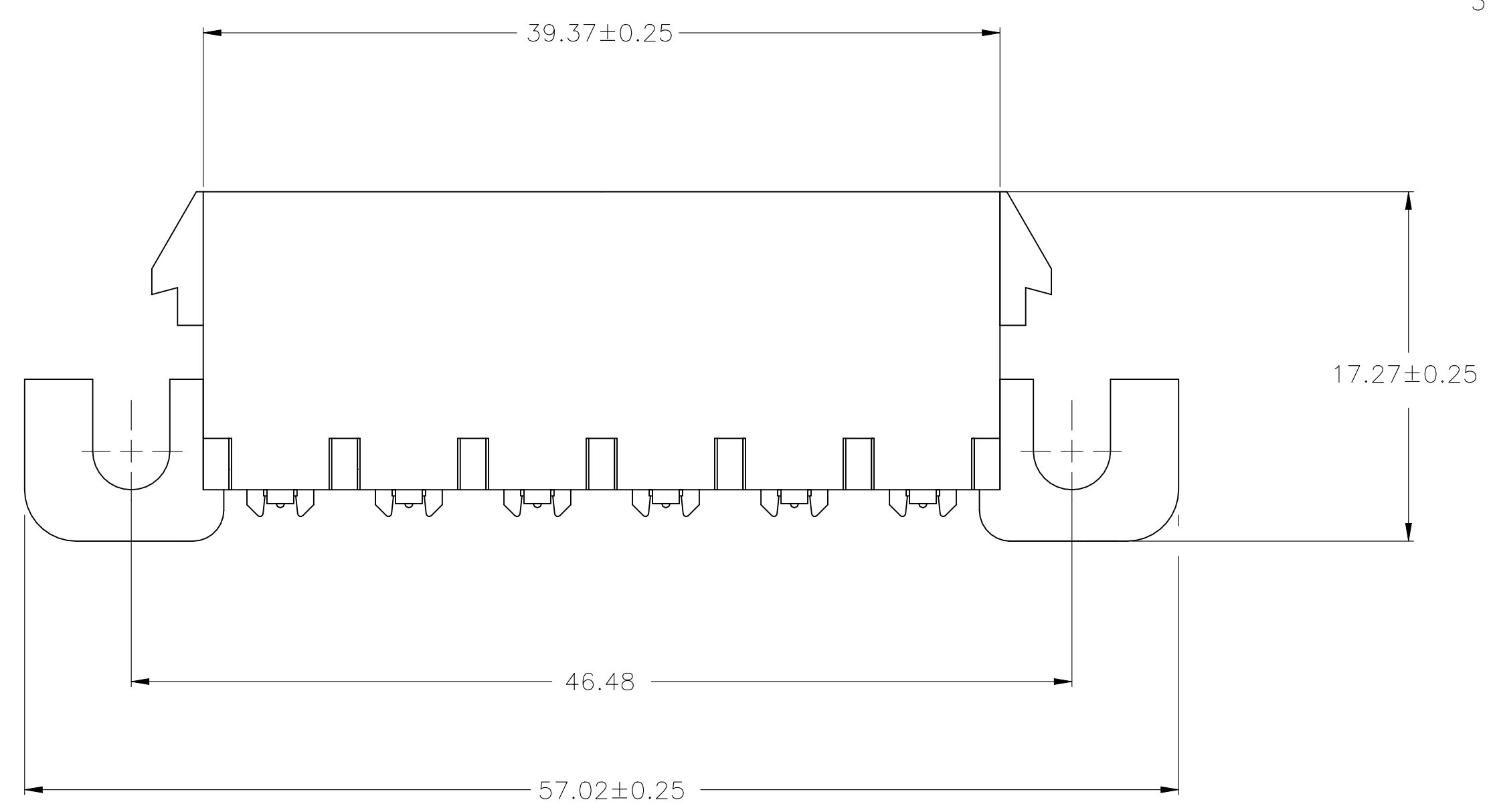


REVISIONS					
REV	DATE	DESCRIPTION	BY	CHK	APP'D
A2	02NOV2021	REVISED PER ECR-21-119230	SS	VS	

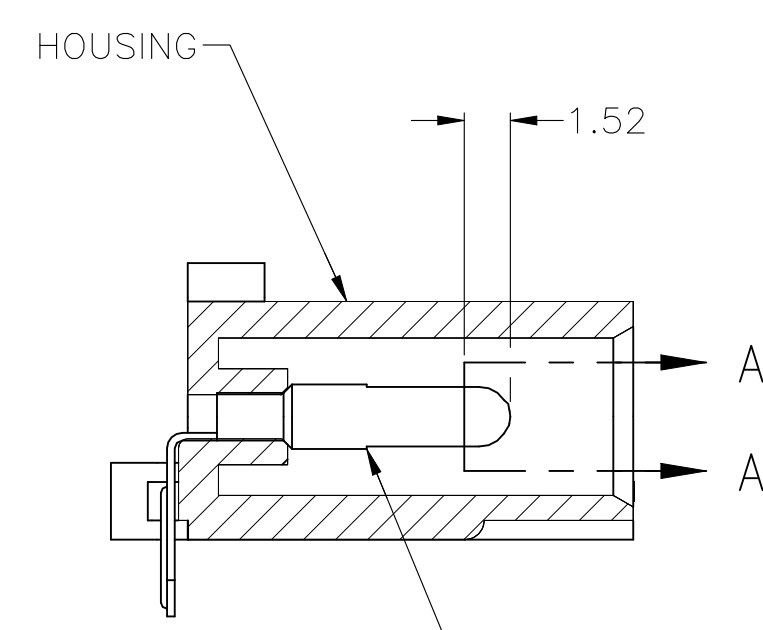
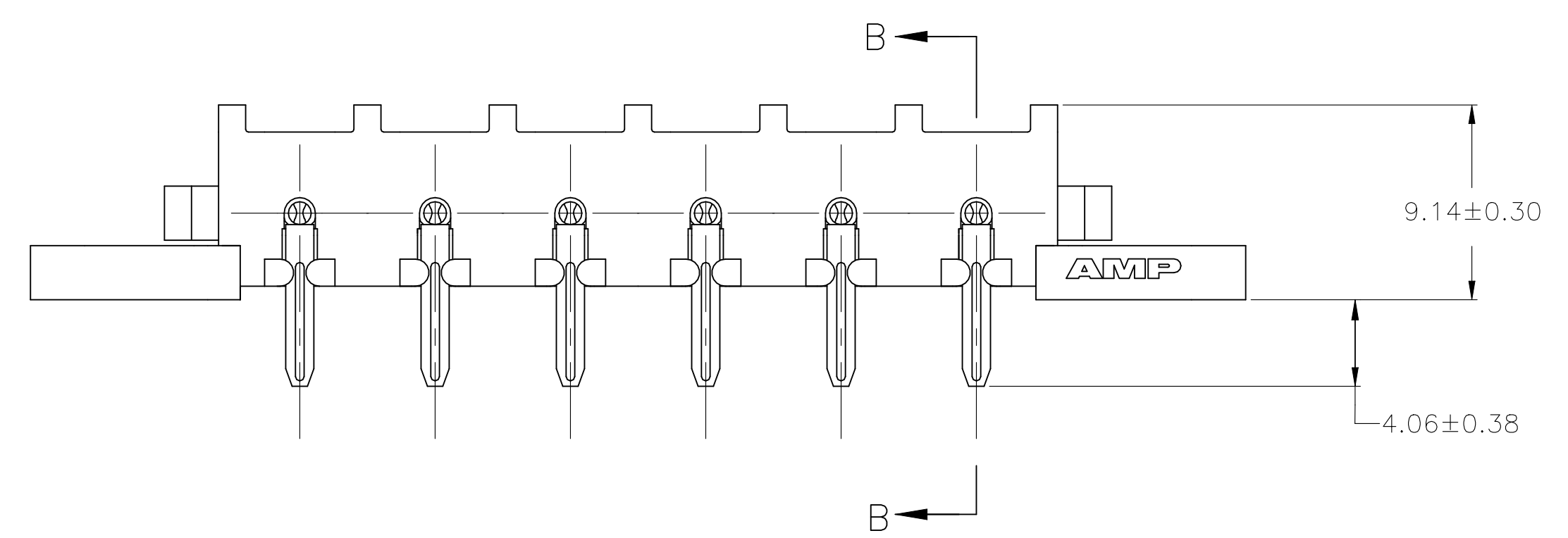
- 1 PARTS COMPLY WITH AMP SOLDERABILITY SPECIFICATION 109-11-5.
- 2 CIRCUIT IDENTIFICATION CHARACTERS ARE ADJACENT TO THE INDICATED CAVITIES, BUT LOCATION AND ORIENTATION MAY DIFFER FROM PRINT.
- 3 OPTIONAL CONSTRUCTION MAY DELETE THIS RIB.
- 4 FLAMMABILITY UL V-0 FOR THICKNESS 0.4, 0.45, 0.8, 1.6, AND 3.0 PER IEC 60695-11-10.
- 5 GLOW WIRE FLAMMABILITY (GWFI): 960°C FOR THICKNESS 0.45, 0.8, 1.6, AND 3.0 PER IEC 60695-2-12.
- 6 GLOW WIRE IGNITION (GWIT): 825°C FOR THICKNESS 0.45, 800°C FOR THICKNESS 0.8, 775°C FOR THICKNESS 1.6 AND 3.0 PER IEC 60695-2-13.
- 7 DIMENSIONS SHOWN REPRESENT PRODUCT IN DRY CONDITION. ADDITIONAL 2% GROWTH DUE TO END USE LOCATION MOISTURE ABSORPTION MAY OCCUR AND SHOULD BE ACCOUNTED FOR.



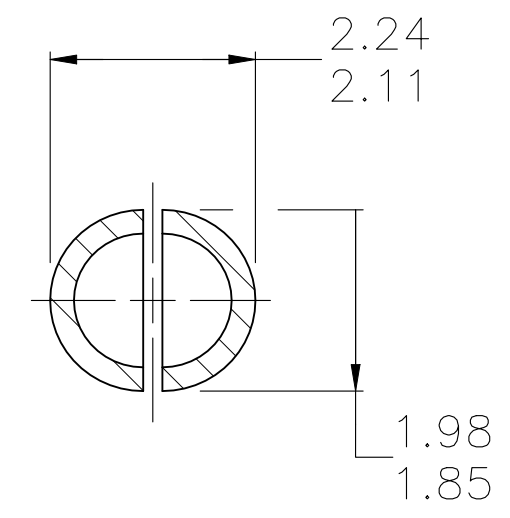
3-DIMENSIONAL MODEL
NTS



RECOMMENDED MOUNTING HOLE PATTERN
FOR 1.57 THICK P.C. BOARD



SECTION B-B



SECTION A-A
SCALE 10:1

MM	IN	MM	IN	MM	IN
1.98	.078	9.14	.360	-	-
1.85	.073	7.37	.290	57.02	2.245
1.57	.062	6.35	.250	46.48	1.830
1.52	.060	4.57	.180	39.37	1.550
0.38	.015	4.06	.160	31.75	1.250
0.25	.010	3.81	.150	25.40	1.000
0.13	.005	2.54	.100	19.05	.750
0.08	.003	2.29	.090	17.27	.680
.00127	.000050	2.24	.088	12.83	.505
.00076	.000030	2.11	.083	12.70	.500

CONVERSION TABLE

PH BRZ TIN NYLON, UL V-0 GW	1969812-1
CONTACT	HOUSING
	PART NO



THIS DRAWING IS A CONTROLLED DOCUMENT.		DIN 25JAN2016		EASVESH WARAD	
DIMENSIONS: mm		TOLERANCES UNLESS OTHERWISE SPECIFIED:		CHK WICKES EVAN	
0 PLC ± -		1 PLC ± -		APVD WICKES EVAN	
1 PLC ± -		2 PLC ± 0.13		NAME	
2 PLC ± -		3 PLC ± -		APPLICATION SPEC	
3 PLC ± -		4 PLC ± -		SIZE	
4 PLC ± -		ANGLES ± -		CAGE CODE	
MATERIAL SEE TABLE		FINISH SEE TABLE		DRAWING NO	
		WEIGHT 0.000000		A1 00779	
		CUSTOMER DRAWING		SCALE 4:1	
				SHEET 1 of 1	
				REV A2	