

| PART NUMBER | REVISION | DESCRIPTION |
|-------------|----------|----------------------------------|
| 3-1893994-5 | G | Mini Applicator-LP |
| 7-1893994-5 | G | Applicator Drawer kit + Crimpers |
| 7-1893994-7 | B | Crimp Tooling Kit-LP |

| REVISIONS | | | | | |
|-----------|-----|---------------------------|-----------|-----|------|
| P | LTN | DESCRIPTION | DATE | OWN | APVD |
| D | | ECO-16-007232 | 12MAY2016 | DLO | WAO |
| E | | ECO-16-017487 | 30DEC2016 | DLO | WAO |
| F | | ECO-17-000873 | 21JAN2017 | DLO | SHA |
| G | | REVISED PER ECR-22-133825 | 24MAR2022 | GK | DLO |

CRIMP DATA

TERMINAL DESCRIPTION
RING TONGUE

| WIRE ADJUSTMENT DISC POSITION | CRIMP HEIGHT | WIRE SIZE |
|-------------------------------|--------------------|-----------------------------|
| B6 | 2.86 MM [.113 IN] | 4.00 MM ² |
| B6 | 2.86 MM [.113 IN] | 1.50 + 2.50 MM ² |
| B0 | 2.78 MM [.109 IN] | 3.50 MM ² |
| B0 | 2.78 MM [.109 IN] | 1.00 + 2.50 MM ² |
| A5 | 2.70 MM [.106 IN] | 3.00 MM ² |
| A5 | 2.70 MM [.106 IN] | 1.50 + 1.50 MM ² |

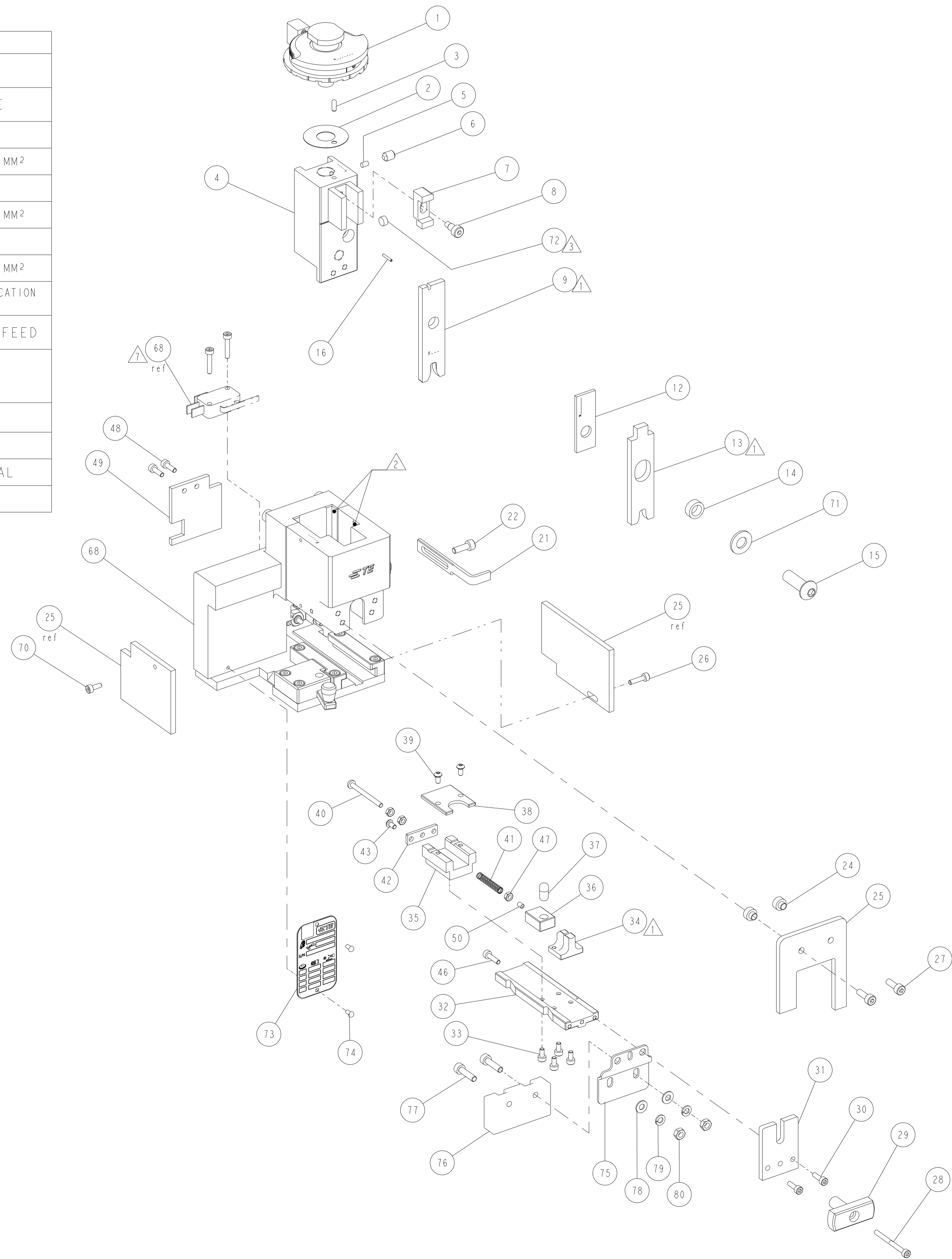
| WIRE STRIP LENGTH | TERMINAL APPLICATION SPECIFICATION |
|-------------------|------------------------------------|
| 5.25 MM ± 0.25 MM | 114-18022 |

| CRIMPER | CRIMP WIDTH | CRIMPER PROFILE | APPLICATOR FEED |
|--------------|--------------------|-----------------|-----------------|
| WIRE CRIMPER | 4.06 mm [.160 IN] | F | - |
| INS. CRIMPER | 5.33 mm [.210 IN] | Ov | - |

| INSULATION RANGE | WIRE RANGE | GAUGE |
|------------------|----------------------------|-----------|
| 4.0 - 4.70 MM | >2.5 - 4.0 MM ² | 1707132-1 |

TERMINALS APPLIED:

| TERMINAL | SEAL | TERMINAL | SEAL |
|----------|------|----------|------|
| 964199 | - | - | - |



NOTES:

- ▲ RECOMMENDED SPARE PARTS
- ▲ GREASE BEARING SURFACES LIGHTLY
- ▲ MAGNET, ITEM 6, MUST BE ORIENTED CORRECTLY IN ORDER TO PROPERLY ACTUATE THE COUNTER.
- 4- UNLESS SPECIFIED OTHERWISE TORQUE VALUES SHALL BE USED PER DOCUMENT, 101-35000.
- 5- APPLICATOR TO BE USED ON BENCH TERMINATORS ONLY.
- 6- RECOMMENDED TERMINATORS:
G11 TERMINATOR FOR LOOSE PIECE APPLICATORS
PN 2374600-1 OR 2374600-2 (W/ COM).
G11+ TERMINATOR FOR LOOSE PIECE APPLICATORS
PN 2844810-1 OR 2844810-2 (W/ COM).
- ▲ WHEN WORKING IN THE G11 OR G11+ TERMINATOR THE INSTALLATION OF MICROSWITCH (ASSEMBLED IN APPLICATOR BASIC ASSY, ITEM #68) IN THE TERMINATOR IS NOT NEEDED. THE INSTALLATION OF THE MICROSWITCH IS MANDATORY ONLY FOR TERMINATORS THAT DO NOT FEATURE THE MAGNETIC ACTUATOR ITEM #76.

| | | | | | |
|---|---|---|-------------|------------------------------------|---------|
| - | 2 | 2 | 5018030-2 | NUT, HEX, REG, RoHS, M4 | 80 |
| - | 2 | 2 | 1-18026-0 | WASHER, SPRG LOCK, REG M4 | 79 |
| - | 2 | 2 | 1-18028-2 | WASHER, FLAT, REG M4 | 78 |
| - | 2 | 2 | 2168083-8 | SCR, SKT HD CAP, RoHS, M4 X 16 | 77 |
| - | 1 | 1 | 2168489-1 | ACTUATOR, SPARE, MC1 | 76 |
| - | 1 | 1 | 2844821-1 | BRACKET, ACTUATOR, MINI-SIZE | 75 |
| - | - | 2 | 2168078-1 | SCREW, DRIVE, RH, RoHS, 2 x .188 | 74 |
| - | - | 1 | 2119740-1 | TAG, IDENTIFICATION | 73 |
| - | - | 1 | 994969-1 | MAGNET, RARE EARTH, HIGH ENERGY | 72 |
| - | 1 | 1 | 1-18028-0 | WASHER, FLAT, REG M8 | 71 |
| - | - | 1 | 18023-3 | SCR, SKT HD CAP M3 X 8.0 | 70 |
| - | - | 1 | 2077852-1 | APPLICATOR BASIC ASSEMBLY, MINI-LP | 68 |
| - | 1 | 1 | 18032-1 | SCR, SET, FLT PNT, M3 X 5.0 | 50 |
| - | - | 1 | 2076888-1 | REAR APPLICATOR GUARD | 49 |
| - | - | 2 | 18023-4 | SCR, SKT HD CAP M3 X 10.0 | 48 |
| - | - | 3 | 18030-1 | NUT, HEX, REG M3 | 47 |
| - | 1 | 1 | 18023-5 | SCR, SKT HD CAP M3 X 12.0 | 46 |
| - | 2 | 2 | 18024-1 | SCR, BTN SKT HD CAP (M3 X 6.0) | 43 |
| - | 1 | 1 | 1707957-2 | REAR COVER | 42 |
| - | 1 | 1 | 1-22279-1 | SPRING, COMPRESSION | 41 |
| - | 1 | 1 | 4-18019-4 | SCR, PAN SLT HD MACH M3 X 35.0 | 40 |
| - | 2 | 2 | 18024-1 | SCR, BTN SKT HD CAP (M3 X 6.0) | 39 |
| - | 1 | 1 | 2076240-1 | COVER, TERMINAL SUPPORT | 38 |
| - | 1 | 1 | 1-1707366-4 | PIN DOWEL | 37 |
| - | 1 | 1 | 2076239-4 | SLIDING TERMINAL SUPPORT | 36 |
| - | 1 | 1 | 2076219-1 | SUPPORT, SLIDING BLOCK | 35 |
| ▲ | 1 | 1 | 1-1707820-9 | ANVIL, SPECIAL | 34 |
| - | 4 | 4 | 18023-2 | SCR, SKT HD CAP M3 X 6.0 | 33 |
| - | 1 | 1 | 1707825-7 | GUIDE BLOCK - | 32 |
| - | 1 | 1 | 624887-5 | APPLICATOR GUARD | 31 |
| - | 2 | 2 | 18023-4 | SCR, SKT HD CAP M3 X 10.0 | 30 |
| - | 1 | 1 | 1707779-1 | KNOB | 29 |
| - | 1 | 1 | 9-18023-4 | SCR, SKT HD CAP M3 X 35.0 | 28 |
| - | - | 2 | 1-18023-2 | SCR, SKT HD CAP M4 X 12.0 | 27 |
| - | - | 1 | 18023-5 | SCR, SKT HD CAP M3 X 12.0 | 26 |
| - | - | 1 | 1707831-7 | APPLICATOR GUARD | 25 |
| - | - | 2 | 1707368-1 | SPACER, APPL. GUARD | 24 |
| - | - | 2 | 1-18023-2 | SCR, SKT HD CAP M4 X 12.0 | 22 |
| - | - | 1 | 571417-1 | STRIPPER | 21 |
| - | - | 1 | 1-993111-0 | PIN, SLOTTED SPRING 1.5 X 10.0 | 16 |
| - | 1 | 1 | 2-18024-6 | SCR, BTN SKT HD CAP (M8 X 25.0) | 15 |
| - | 1 | 1 | 1-238011-2 | BLOCK, CRIMPER SPACER | 14 |
| ▲ | 1 | 1 | 2077585-1 | INSULATION CRIMPER (OV) | 13 |
| - | 1 | 1 | 1-690407-9 | SPACER, CRIMPER | 12 |
| ▲ | 1 | 1 | 4-1707327-7 | WIRE CRIMPER, SPECIAL | 9 |
| - | - | 1 | 1707121-2 | SCREW, SOCKET HD SHOULDER | 8 |
| - | - | 1 | 690402-7 | BLOCK, INSULATION ADJUSTMENT | 7 |
| - | - | 1 | 18032-8 | SCR, SET, FLT PNT, M6 X 8.0 | 6 |
| - | - | 1 | 690191-1 | PLUG, NYLON | 5 |
| - | - | 1 | 1707115-1 | RAM, MINI APPLICATOR | 4 |
| - | - | 1 | 1-992946-4 | PIN, DOWEL 3 X 8 | 3 |
| - | - | 1 | 1707150-1 | WASHER, FLAT | 2 |
| - | - | 1 | 2077830-1 | WIRE DISC, FINE ADJUST. | 1 |
| - | - | - | -77-75-35 | PART NO | ITEM NO |

| | | | | |
|--|--|------------------|-----------|--|
| THIS DRAWING IS A CONTROLLED DOCUMENT. | | OWN | 10JUN2013 | TE Connectivity |
| | | CHK | 10JUN2013 | |
| | | APVD | 10JUN2013 | NAME LOOSE PIECE MINI APPLICATOR |
| | | PRODUCT SPEC | | |
| | | APPLICATION SPEC | | SIZE CAGE CODE DRAWING NO A 00779 ©=1893994 |
| | | RESTRICTED TO | | |
| MATERIAL | | WEIGHT | | SCALE 3:5 SHEET 1 OF 1 REV G |
| FINISH | | CUSTOMER DRAWING | | |