

4

3

2

1

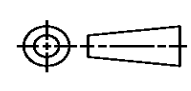
THIS DRAWING IS UNPUBLISHED. RELEASED FOR PUBLICATION  
© COPYRIGHT ALL RIGHTS RESERVED.

LOC	DIST	REVISIONS			
P	LTR	DESCRIPTION	DATE	DWN	APVD
	B1	ECR-16-011296	03OCT2016	GK	SD

# REPLACED BY OCEAN STYLE APPLICATOR PART NUMBER 2151527-1

FOR REPLACEMENT PARTS FOR APPLICATOR 1855659  
REFER TO ADDITIONAL PAGE(S). SPARE PARTS KIT (IF LISTED)  
WILL REMAIN AVAILABLE.

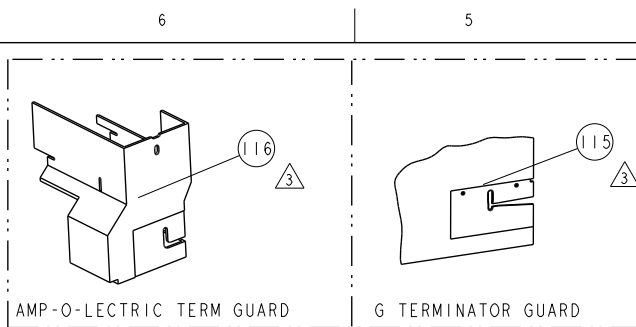
THE REPLACEMENT OCEAN STYLE APPLICATOR HAS THE  
SAME TERMINATOR/PRESS INTERFACE AS APPLICATOR  
1855659

THIS DRAWING IS A CONTROLLED DOCUMENT.		DWN	GOPALAKRISHNA HV		
DIMENSIONS:		CHK	GOPALAKRISHNA HV		
		APVD	STOUGH DALE		
		PRODUCT SPEC			
TOLERANCES UNLESS OTHERWISE SPECIFIED:		APPLICATION SPEC			
0 PLC ±		SIZE	CAGE CODE	DRAWING NO	RESTRICTED TO
1 PLC ±		A3		©- 1855659	
2 PLC ±		CUSTOMER ACCESSIBLE PRODUCTION DRAWING			
3 PLC ±		SCALE	SHEET 1 OF 2		REV B1
4 PLC ±					
ANGLES ±					
MATERIAL		FINISH			

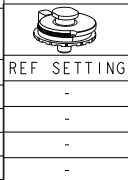


FINE ADJUST SIDE FEED HDM  
APPLICATOR

PART NUMBER	REV	FIRST USED	POWER UNIT	FEED TYPE	DESCRIPTION
1855659-1	B	122500-1	LEADMAKER	POST FEED	CUTS CARRIER
1855659-2	B	565435-5	BENCH MODEL K	PRE FEED	CUTS CARRIER
1855659-3	B	354500-1	BENCH MODEL G	PRE FEED	CUTS CARRIER
1855659-6	B	122500-1	LEADMAKER	POST FEED	CONTINUOUS CARRIER
7-1855659-7	B	-	-	-	SPARE PARTS



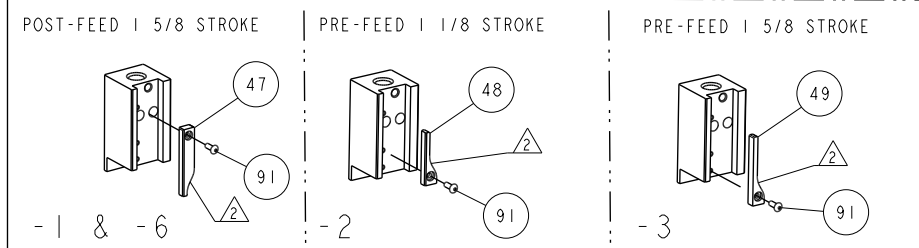
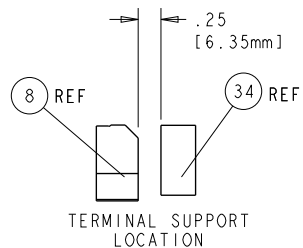
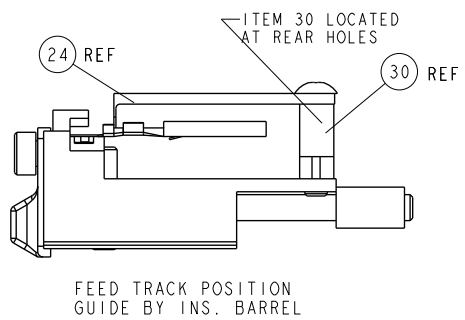
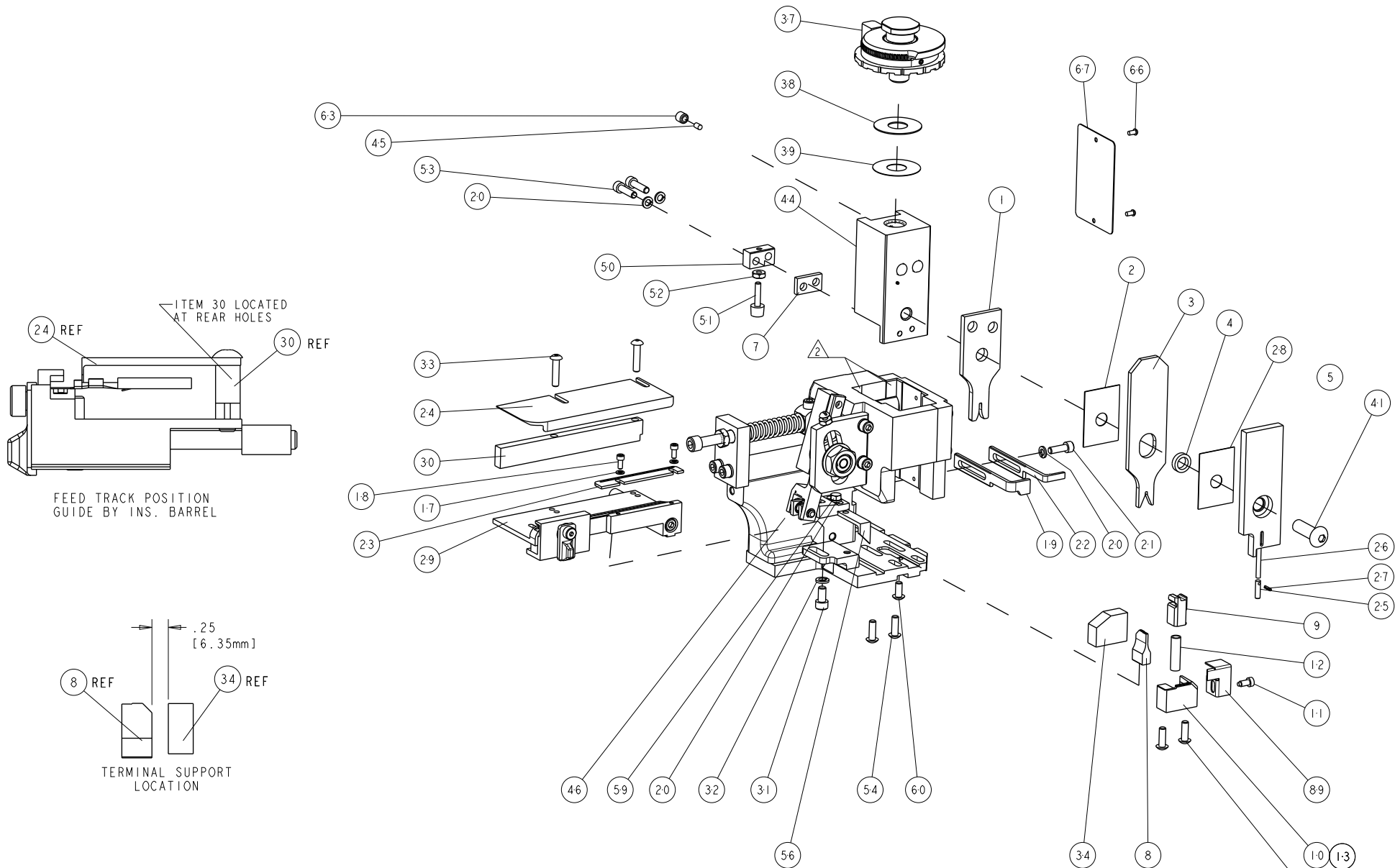
TERMINAL NAME: MALE TERMINAL, WIRE TO WIRE			
TE PN	TE TERMINAL - TE CRIMP SPECS		
638174-4			
-	CRIMP HEIGHT		WIRE SIZE
-	1.12mm±.05/-0.05 [.044±.002/-0.002]		22AWG
-	1.12mm±.05/-0.05 [.044±.002/-0.002]		0.35mm <sup>2</sup>
-	CRIMP	SIZE	TYPE
-	WIRE	1.58mm [.062]	F
-	INSUL	1.58mm [.062]	F
-	WIRE STRIP LENGTH	4.78-5.56	TERM APPL SPEC 114-6063
-	FEED	10.00	APPLICATOR INSTRUCTIONS 408-8040
-	SET UP GAGE	458637-1	



LOC	DIST	REVISIONS			
A	66	REV	DESCRIPTION	DATE	BY
A	RELEASED			28DEC2011	BH
B	REC-13-009283			06JUN2013	CC

- △ RECOMMENDED SPARE PARTS
- △ GREASE LIGHTLY
- △ GUARD MUST BE IN PLACE WHEN OPERATING APPLICATOR IN A BENCH MACHINE

**\* WARNING**  
ON INSTALLATION, SET WIRE DISC TO LARGEST WIRE SIZE SETTING. USE OF SETTINGS BELOW MIN. REQUIRED CRIMP HEIGHT SETTING WILL CAUSE DAMAGE TO CRIMP TOOLING.



-	-	-	REF	-	455749-1	GUARD WINDOW	116
-	-	REF	-	-	679532-1	INSERT, GUARD	115
-	1	1	1	1	1-21002-7	SCR, BTN SKT HD CAP 6-32 X .375	91
-	-	1	1	1	318563-1	GUARD, FRONT CHIP	89
-	1	1	1	1	4088040	SF APPL INST 408-8040	72
-	1	1	1	1	217238-1	GENERAL INSTRUCTION PKG	71
-	1	1	1	1	461264-5	PLATE, IDENTIFICATION	67
-	2	2	2	2	21017-2	SCREW, DRIVE	66
-	1	1	1	1	21009-2	SCR, SET, SELF LOCKING 1/4-20 X .250	63
-	1	1	1	1	22733-8	SCR, BHSC, SELF-LOCKING, 8-32 X .375	60
-	1	1	1	1	2-22603-0	SCR, HEX HD CAP 8-32 X .312	59
-	1	1	1	1	458537-2	PAWL, FEED	56
-	4	4	4	4	2-21002-2	SCR, BTN SKT HD CAP 8-32 X .500	54
-	2	2	2	2	2-21000-8	SCR, SKT HD CAP 8-32 X .625	53
-	1	1	1	1	21018-5	NUT, HEX, REG 6-32	52
-	1	1	1	1	811242-2	BUMPER, HOLD DOWN	51
-	1	1	1	1	690753-1	SPACER, TONKER	50
-	-	-	-	-	690602-6	CAM, PRE FEED, 1 5/8	49
-	-	-	-	-	690602-5	CAM, PRE FEED, 1 1/8	48
-	1	-	-	-	690501-4	CAM, POST-FEED 1 5/8	47
-	1	1	1	1	459456-1	APPL, BASIC SUB ASSY (SIDE WISE MOCA)	46
-	1	1	1	1	690191-1	PLUG, NYLON	45
-	1	1	1	1	455673-1	RAM, SIDE FEED	44
-	1	1	1	1	7-21002-9	SCR, BTN SKT HD CAP 5/16-24 X 1.00	41
-	1	1	1	1	690125-1	SHIM SUB-ASSY	39
-	1	1	1	1	1-469367-2	SHIM	38
-	1	1	1	1	879103-3	FINE ADJUST HEAD ASSEMBLY	37
-	1	1	1	1	690786-1	TERMINAL SUPPORT	34
-	2	2	2	2	2-21002-4	SCR, BTN SKT HD CAP 8-32 X .750	33
-	1	1	1	1	21024-5	WASHER, SPRG LOCK, REG NO 10	32
-	1	1	1	1	3-21000-4	SCR, SKT HD CAP 10-32 X .375	31
-	1	1	1	1	1320908-6	SPACER, STRIP GUIDE	30
-	1	1	1	1	2-1633091-0	ASSEMBLY, STRIP GUIDE	29
-	1	1	1	1	455888-3	SPACER, CRIMPER	28
-	1	1	1	1	21028-2	PIN, SLOTTED SPRING .062 X .250	27
-	1	1	1	1	5-547505-2	SPRING, COMPRESSION	26
-	1	1	1	1	854769-4	HOLDER, INS	25
-	1	1	1	1	1320928-4	STRIP GUIDE	24
-	1	1	1	1	1-690438-0	FRONT STRIP GUIDE	23
-	1	-	-	-	690472-2	STRIPPER	22
-	1	1	1	1	2-21000-7	SCR, SKT HD CAP 8-32 X .500	21
-	4	4	4	4	21024-4	WASHER, SPRG LOCK, REG NO 8	20
-	-	1	-	-	691353-1	STRIPPER	19
-	2	2	2	2	1-21000-3	SCR, SKT HD CAP 4-40 X .250	18
-	2	2	2	2	21024-2	WASHER, SPRG LOCK, REG NO 4	17
-	1	-	-	-	679625-2	SHEAR HOLDER, FRONT (NO CUT)	13
-	1	1	1	1	3-22280-3	SPRING, COMPRESSION	12
-	1	1	1	1	690461-2	STOP, SHEAR	11
-	-	1	1	1	1-690459-0	SHEAR HOLDER, FRONT	10
-	1	1	1	1	454276-1	FLOATING SHEAR, FRONT	9
-	1	1	1	1	4-1633107-9	ANVIL, COMBINATION .062	8
-	1	1	1	1	240641-5	SPACER	7
-	-	-	-	-	-	-	6
-	1	1	1	1	854772-1	DEPRESSOR, SHEAR	5
-	1	1	1	1	238011-2	BLOCK, CRIMPER SPACER	4
-	1	1	1	1	4-679440-3	CRIMPER, INSULATION F	3
-	1	1	1	1	455888-4	SPACER, CRIMPER	2
-	1	1	1	1	3-456403-8	CRIMPER, WIRE PREMIUM	1
-77	-6	-3	-2	-1	U/M	PART NO	DESCRIPTION

DIMENSIONS: INCHES		TOLERANCES UNLESS OTHERWISE SPECIFIED:		DRAWN: BOB HIGMAN		DATE: 01NOV2011	
0 PLC	±	1 PLC	±0.1	2 PLC	±0.01	3 PLC	±0.001
4 PLC	±0.0001	ANGLES		APPROVED: M. CLIFFORD		DATE: 01NOV2011	
MATERIAL:				FINISH:			
WEIGHT:				SCALE: 3:5			
Customer Accessible Production Drawing				SHEET 1 OF 1			