

THIS DRAWING IS UNPUBLISHED.

RELEASED FOR PUBLICATION

-, -

LOC

DIST

REVISIONS

© COPYRIGHT - By -

ALL RIGHTS RESERVED.

E

B

P

LTR

DESCRIPTION

DATE

DWN

APVD

C2

ECR-22-148170

07MAY2024

BP

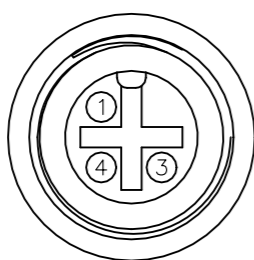
CW

NOTES:

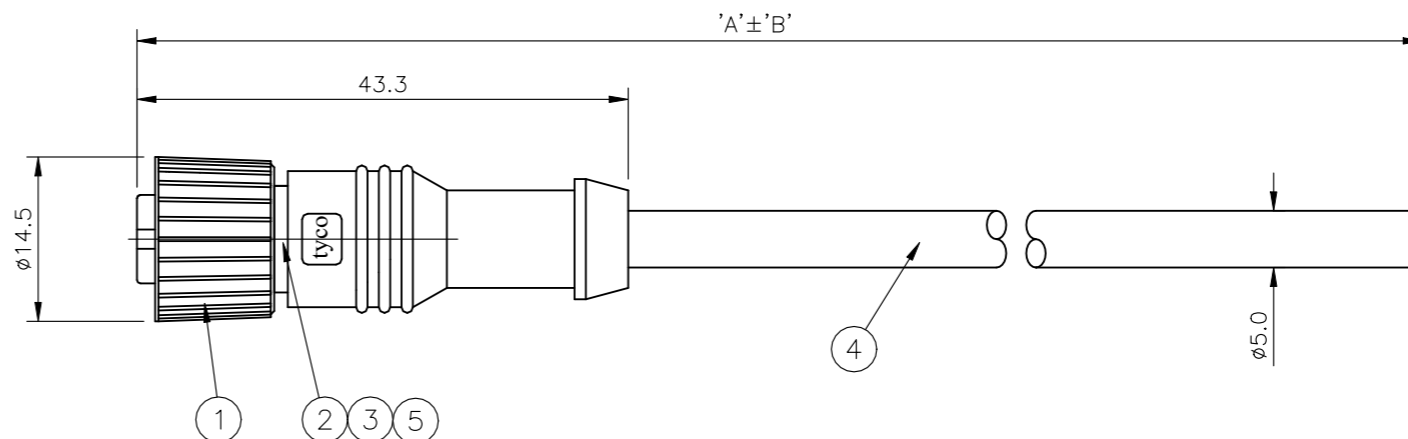
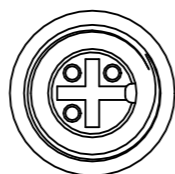
- 1. ELECTRICAL DATA: CONTACT RESISTANCE: 10 mOhm MAX
INSULATION RESISTANCE: 100 MOhm MIN at 500VDC
CURRENT RATING: 5 AMPS
BREAKDOWN VOLTAGE: 500 VAC MIN PER MINUTE
- 2. ENVIRONMENTAL: OPERATING TEMPERATURE: -20°C TO +80°C
SEALING REQUIREMENTS: IP67
- 3. PROD SPEC: 108-3641
- 4. PACKAGING: 107-3334
- 5. FOR TECHNICAL DATA REFER TO YOUR LOCAL TE CONNECTIVITY SALES OFFICE
- 6. ALL DIMENSIONS ARE NOMINAL FOR REFERENCE ONLY UNLESS OTHERWISE STATED

ITEM	DESCRIPTION	MATERIAL	FINISH/COLOUR	QTY
1	SCREW NUT	ZINC DIE CAST	2.5µm NICKEL PLATED	1
2	CONNECTOR BODY	POLYURETHANE	BLACK	1
3	SOCKET CONTACT	BRASS	0.15µm GOLD PLATED OVER NICKEL	3
4	3 CORE CABLE (CORES 22AWG TO UL2464)	PVC JACKET UV RESISTANT	BLACK	1
5	'O' RING	VITON	GREEN	1

PIN ASSIGNMENTS FRONT VIEW



4	BLACK
3	BLUE
1	BROWN
PIN	WIRE COLOUR



	10000	500 mm	M12 STRAIGHT FEMALE CONNECTOR 10.0m CABLE	1838242-5
	7000	350 mm	M12 STRAIGHT FEMALE CONNECTOR 7.0m CABLE	1838242-4
(C2)	OBSOLETE 5000	250 mm	M12 STRAIGHT FEMALE CONNECTOR 5.0m CABLE	1838242-3
	3000	150 mm	M12 STRAIGHT FEMALE CONNECTOR 3.0m CABLE	1838242-2
	2000	100 mm	M12 STRAIGHT FEMALE CONNECTOR 2.0m CABLE	1838242-1
	DIM A	TOL 'B'	DESCRIPTION	PART NUMBER

THIS DRAWING IS A CONTROLLED DOCUMENT.

DWN 22AUG05

H M RAGHAVENDRA

CHK 15DEC05

F.WHEELER-KING

APVD 15DEC05

F.WHEELER-KING

PRODUCT SPEC

APPLICATION SPEC

WEIGHT -



NAME

M12 STRAIGHT FEMALE CONNECTOR 3 POSITION, PVC CABLE

SIZE

CAGE CODE

DRAWING NO

RESTRICTED TO

A3 00779 C-1838242

CUSTOMER DRAWING

SCALE NTS

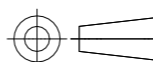
SHEET

1 OF 1

REV C2

DIMENSIONS:

mm



TOLERANCES UNLESS OTHERWISE SPECIFIED:

0 PLC	± -
1 PLC	± -
2 PLC	± -
3 PLC	± -
4 PLC	± -
ANGLES	± -
FINISH	-

MATERIAL

-

FINISH

-