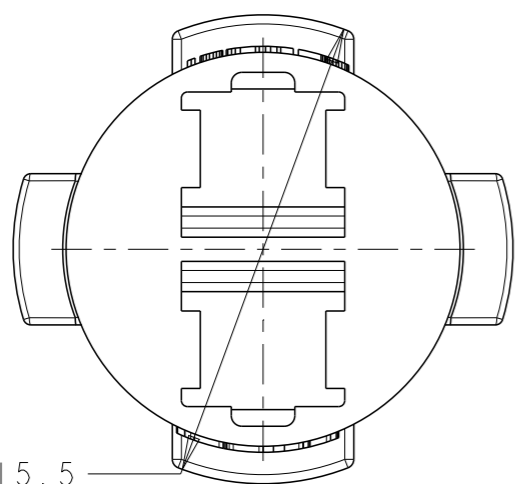
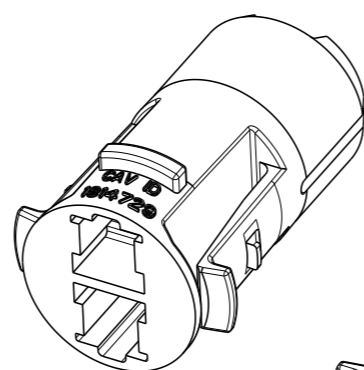


REVISIONS

P	LTR	DESCRIPTION	DATE	DWN	APVD
	A	New Drawing	11MAY2015	SK	BB

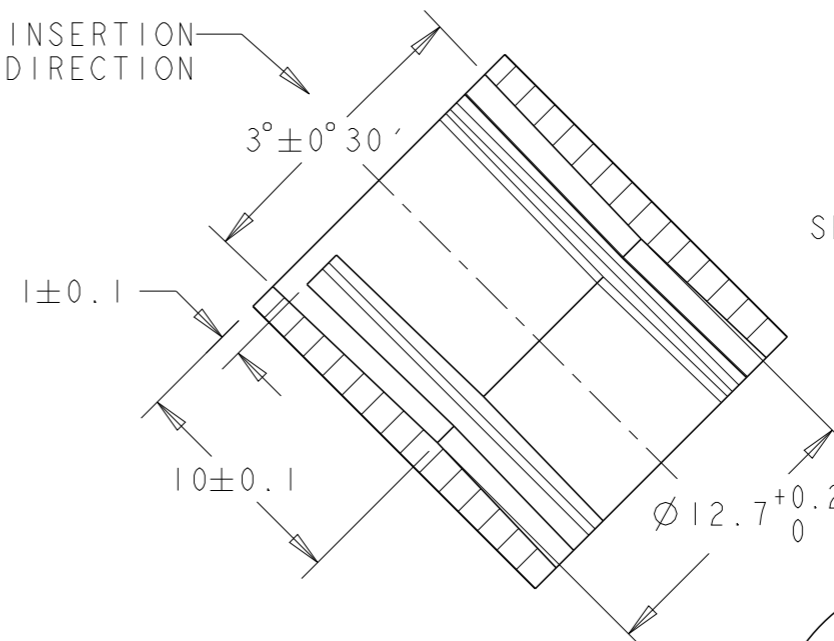
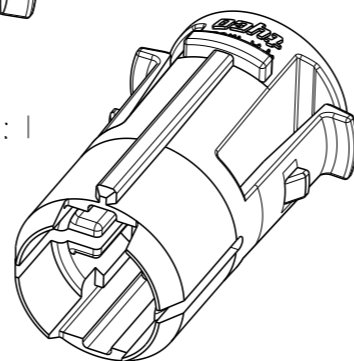


Ø 15.5

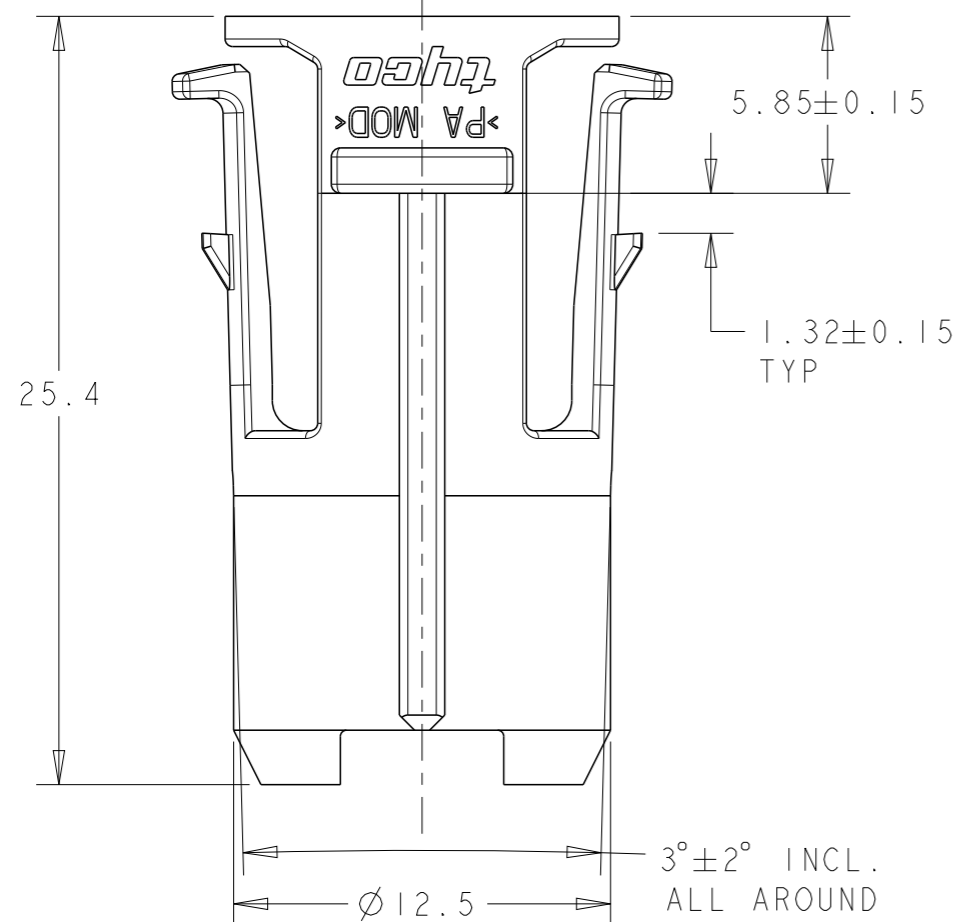


CONNECTOR INSERTION DIRECTION

SCALE 2:1



SECTION B-B



25.4

5.85 ± 0.15

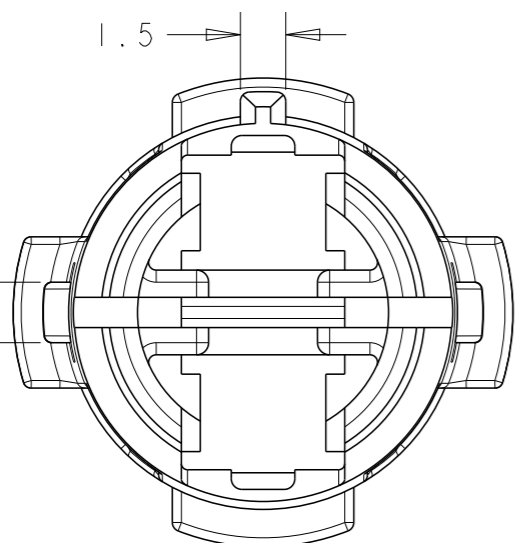
1.32 ± 0.15 TYP

3° ± 2° INCL. ALL AROUND

Ø 12.5

1.5

2 TYP



2.6 ± 0.1
2 POSN.

R0.3 TYP

1.8 ± 0.1

R7.5 ± 0.1

Ø 15 ± 0.1

RECOMMENDED INTERFACE

NOTES:

1. USE CONTACT PART NUMBER 626277-1 WITH 0.16 OVERLAP CRIMP ONLY
2. TE LOGO, PART NO., MATERIAL AND CAVITY IDENTIFICATION POSITIONED APPROX AS SHOWN
3. MATERIAL: CROSSLINKED PA66 GF15
4. PART IS MANUFACTURED USING CHANGEOVERS IN MOULD TOOL FOR 699499.

1814729-4	BULBHOLDER, LATCHED (IRRADIATED)	BLACK
1814729-2	BULBHOLDER, LATCHED (IRRADIATED)	BROWN
PART NO.	DESCRIPTION	COLOUR

THIS DRAWING IS A CONTROLLED DOCUMENT.

DIMENSIONS: mm	TOLERANCES UNLESS OTHERWISE SPECIFIED: 0 PLC ±X 1 PLC ±X 2 PLC ±X 3 PLC ±X 4 PLC ±X ANGLES ±2	LINEAR ±0.5
MATERIAL	FINISH	

DWN	11MAY2015	SHASHIKUMAR S N
CHK	11MAY2015	B. BAKER
APVD	11MAY2015	B. BAKER
PRODUCT SPEC		
APPLICATION SPEC		
WEIGHT		
Customer Drawing		

		NAME		RESTRICTED TO
		BULBHOLDER, LATCHED		
SIZE	CAGE CODE	DRAWING NO		
A3	00779	1814729		
SCALE		SHEET	OF	REV
4:1		1	1	A