



EVERY
CONNECTION
COUNTS

RoHS 2 TECHNICAL FILE

PN: 1804700-2

TE Form : 5350
24-January-2013

1804700-2_TEFT_2
REV. A

•This technical file contains following sections :

1. PRODUCT IDENTIFICATION

- description
- list of components
- list of suppliers
- applicable EEE category
- applicable exemptions
- picture (optional)

2. RISK ASSESSMENT

- risk assessment methodology
- material risk
- supplier risk
- part noncompliance risk
- recommended level of technical documentation

3. EVALUATION

- evaluation of documentation
- evaluation criteria
- compliancy confirmation

4. REFERENCES

- International Standards
- EU documents
- TE Connectivity documents

5. OVERVIEW TABLE

1. PRODUCT IDENTIFICATION

DESCRIPTION

product group	Powered Tools
type	Hydraulic Pump
serial number	Not applicable
batch	Not applicable
part number(s)	1804700-2
part description	10,000 PSI Hydraulic Pump

LIST OF COMPONENTS

All components are listed in the overview table of this technical file.

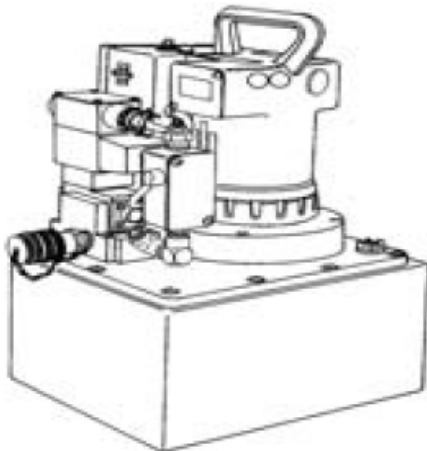
LIST OF SUPPLIERS

All suppliers are listed in the overview table of this technical file.

APPLICABLE EEE CATEGORY

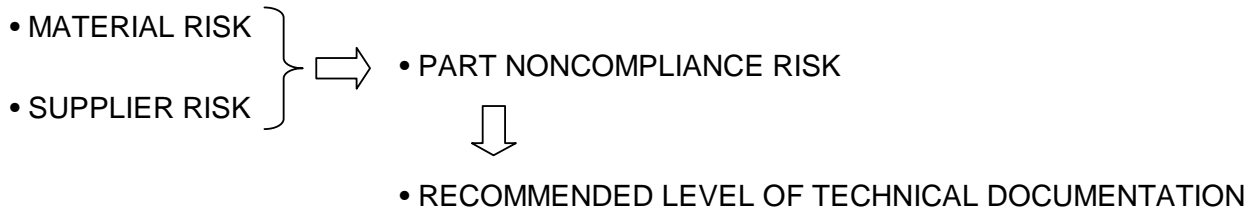
6. Electrical and Electronic Equipment

APPLICABLE EXEMPTIONS (if any)



2. RISK ASSESSMENT

RISK ASSESSMENT METHODOLOGY



MATERIAL RISK

- All TE Connectivity parts are categorized in commodity codes. All these commodity codes were evaluated by an internal material expert team and assigned a LOW-MEDIUM-HIGH material risk.
- This LOW-MEDIUM-HIGH material risk evaluation is documented in the overview table of this technical file.
- Business Units (BU) have the opportunity to override this default material risk, based on :
 - BU specific implementation of TE's corporate compliance validation specification TEC-138-703
 - or BU specific compliance procedures
 - or detailed material knowledge of the evaluated component.
- Requirements for BU override of material risk :
 - although BU specific assessment procedures and scoring systems may differ, in the end all scores are to be transferred to a LOW-MEDIUM-HIGH material risk evaluation that can be documented in the overview table
 - any material risk override needs to be explained by a comment in the overview table.

SUPPLIER RISK

- All TE Connectivity suppliers are assigned a LOW-MEDIUM-HIGH supplier risk, using several measurement criteria as indicators for supplier's capabilities to manage hazardous substance content of their products.
- This LOW-MEDIUM-HIGH supplier risk evaluation is documented in the overview table of this technical file.
- Business Units (BU) have the opportunity to override this default supplier risk, based on :
 - BU specific implementation of TE's corporate compliance validation specification TEC-138-703
 - or BU specific compliance procedures
 - or available supplier audit results
- Requirements for BU override of supplier risk :
 - although BU specific assessment procedures and scoring systems may differ, in the end all scores are to be transferred to a LOW-MEDIUM-HIGH supplier risk evaluation that can be documented in the overview table
 - any supplier risk override needs to be explained by a comment in the overview table.

PART NONCOMPLIANCE RISK

- The PART NONCOMPLIANCE RISK combines the material risk evaluation and the supplier risk evaluation into an overall LOW-MEDIUM-HIGH part noncompliance risk ranking.
- The material risk is the main driving factor for the PART NONCOMPLIANCE RISK, with a beneficial influence for trustworthy suppliers.

PART NONCOMPLIANCE RISK		SUPPLIER RISK		
		LOW	MEDIUM	HIGH
MATERIAL RISK	LOW	⇒ LOW	⇒ LOW	⇒ LOW
	MEDIUM	⇒ LOW	⇒ MEDIUM	⇒ MEDIUM
	HIGH	⇒ LOW	⇒ MEDIUM	⇒ HIGH

RECOMMENDED LEVEL OF TECHNICAL DOCUMENTATION

• The different levels of the PART NONCOMPLIANCE RISK (low-medium-high) determine the RECOMMENDED LEVEL of TECHNICAL DOCUMENTATION to be established for documenting the part's compliance with the RoHS substance restrictions :

- LOW part noncompliance risk : - generic supplier Statement of Compliance (SoC)
- MEDIUM part noncompliance risk : - part specific supplier Statement of Compliance (SoC)
- HIGH part noncompliance risk : - supplier Material Declaration (MD)
 or
 - test report

• The recommended technical documentation for every part is documented in the overview table of this technical file.

RECOMMENDED MINIMUM DOCUMENTATION LEVEL		SUPPLIER RISK			
		LOW	MEDIUM	HIGH	
MATERIAL RISK	LOW	⇒	Generic Supplier Compliance Response	Generic Supplier Compliance Response	Generic Supplier Compliance Response
	MEDIUM	⇒	Generic Supplier Compliance Response	Part Specific Supplier Response	Part Specific Supplier Response
	HIGH	⇒	Generic Supplier Compliance Response	Part Specific Supplier Response	Supplier Material Declaration <i>or</i> Test Report - supplier - TE internal - 3rd party



3. EVALUATION

EVALUATION OF DOCUMENTATION

- All technical documentation needs to be evaluated whether :
 - the document is of sufficient quality to be used, and
 - actually confirms the required compliancy with the substance restrictions of RoHS2.

EVALUATION CRITERIA

- Following is a non-exhaustive list of criteria to take into account for the evaluation of supplier answers and/or test reports :
 - clear identification of supplier or test lab / letterhead
 - date of answer/test report
 - location of test lab and name of tester
 - clear product identification
 - applicable legislation stated
 - analytical test method used for the test
 - ISO 17025 certification of test lab
 - description of the conclusion of the testing / confirmation that all results do meet the substance restrictions limits
 - no unacceptable waiver statements
 - contact for further information
 - signature

COMPLIANCY CONFIRMATION

- For each component, the result of this compliancy check is documented, by including the following information in the overview table :
 - result of the quality/compliance check (Compliant or Not OK)
 - name of the evaluator who performed the quality/compliancy check
 - date of the quality/compliancy check

4. REFERENCES

International Standards

- ISO 9001 Quality Management Systems - Requirements
- IECQ QC080000 Electrical and Electronic Components and Products Hazardous Substance Process Management System Requirements

EU documents

- Directive 2011/65/EU on the restriction of the use of certain hazardous substances in electrical and electronic equipment
- EN 50581 (2012) : Technical documentation for the assessment of electrical and electronic products with respect to the restriction of hazardous substances

TE Connectivity documents

- TE Quality Policy (TEC-11-01)
- TE Product Environmental Compliance Policy (TEC-16-01)
- TE Global Quality Management System (TEC-1000)
- TE Product Environmental Compliance Processes flowchart
- TE Product Compliance Validation Specification (TEC-138-703)

5. OVERVIEW TABLE

Quality / Compliance Check

Accepted

Evaluation by:

Richard Schaeffer

Date:

26-Aug-13

Assy PN	Part Description	ROHS Code	Material Risk	Supplier Risk	Part Risk	Min Recommended Documentation
69120-2	DYNA-CRP POWER UNIT 230 VOLTS	R - ALWAYS EU ROHS/ELV COMPLIANT	LOW	LOW	LOW	
Component	PUMP, HYDRAULIC HEAVY DUTY	R - ALWAYS EU ROHS/ELV COMPLIANT	LOW	LOW	LOW	Generic Supplier Compliance Response
Component	NAMEPLATE, TRADEMARK	L - NOT EU ROHS OR ELV COMPLIANT	LOW	LOW	LOW	Material Declaration or Test Report
Component	CE DECLARATION, HYDRAULICS	U - NOT IN SCOPE FOR EU ROHS/ELV COMPLIANCE	LOW	LOW	LOW	TE Self Declared
Component	Label, EPUP 25 years	U - NOT IN SCOPE FOR EU ROHS/ELV COMPLIANCE	LOW	LOW	LOW	Generic Supplier Compliance Response
Component	PLATE, IDENTIFICATION	U - NOT IN SCOPE FOR EU ROHS/ELV COMPLIANCE	LOW	LOW	LOW	Generic Supplier Compliance Response
Component	CONTAINER OIL ASSY	U - NOT IN SCOPE FOR EU ROHS/ELV COMPLIANCE	LOW	LOW	LOW	Generic Supplier Compliance Response
Component	LABEL, CE	U - NOT IN SCOPE FOR EU ROHS/ELV COMPLIANCE	LOW	LOW	LOW	Generic Supplier Compliance Response
Component	CUSTOMER MANUAL	U - NOT IN SCOPE FOR EU ROHS/ELV COMPLIANCE	LOW	LOW	LOW	TE Self Declared
Component	CE DECLARATION, HYDRAULIC PUMPS	U - NOT IN SCOPE FOR EU ROHS/ELV COMPLIANCE	LOW	LOW	LOW	TE Self Declared