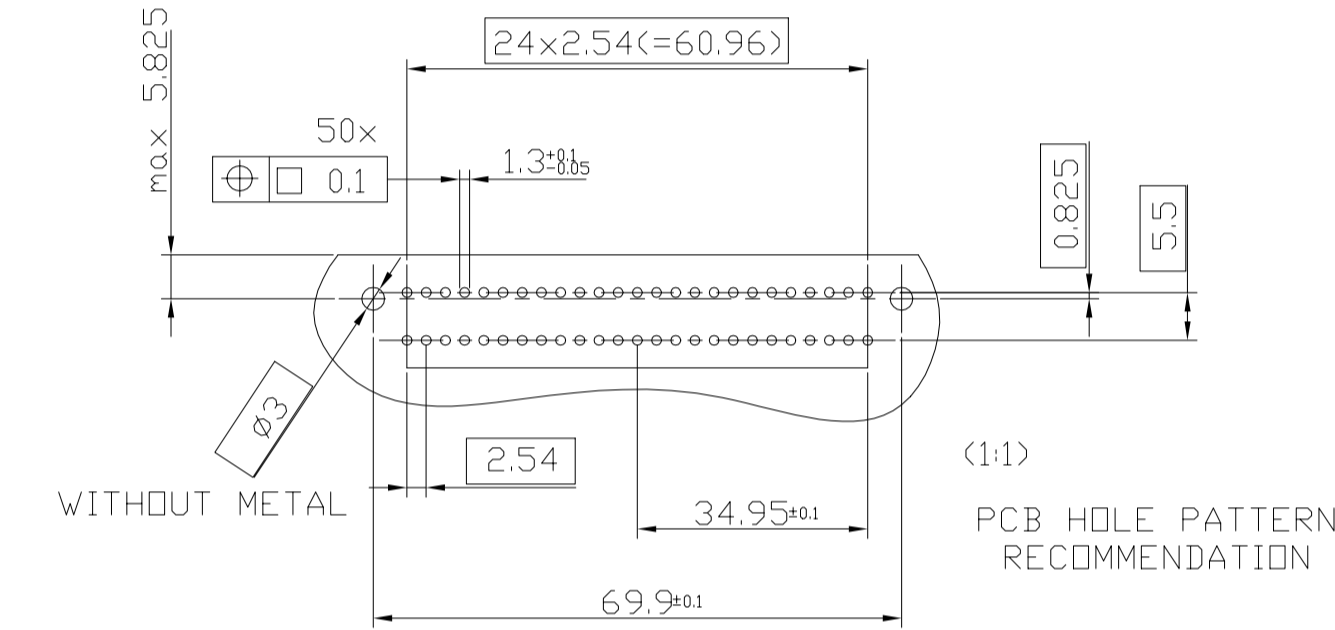
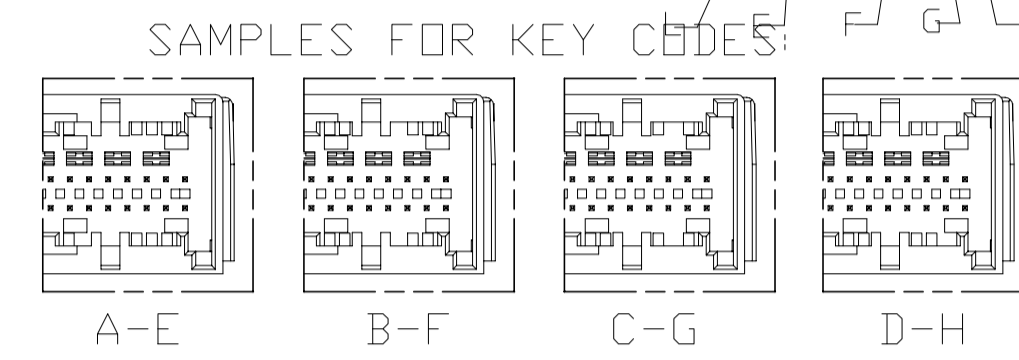
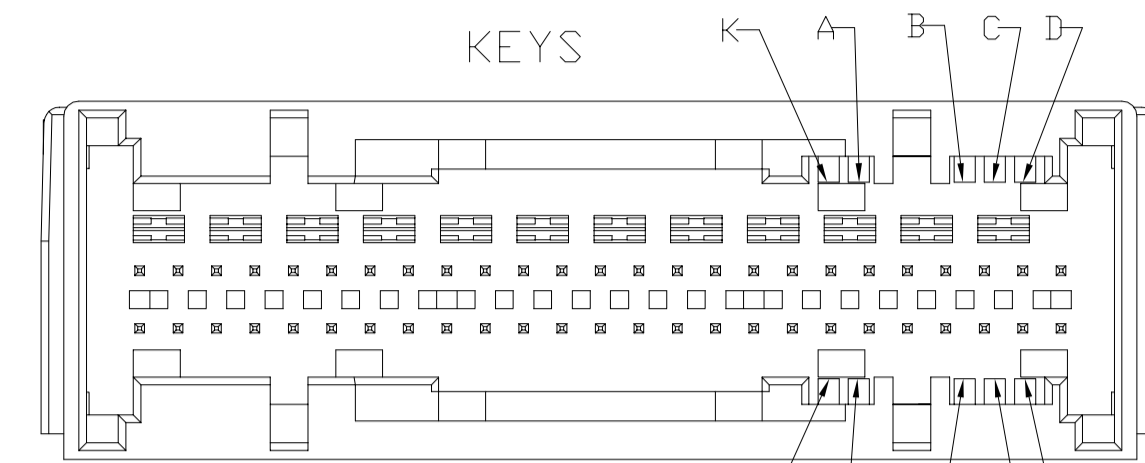
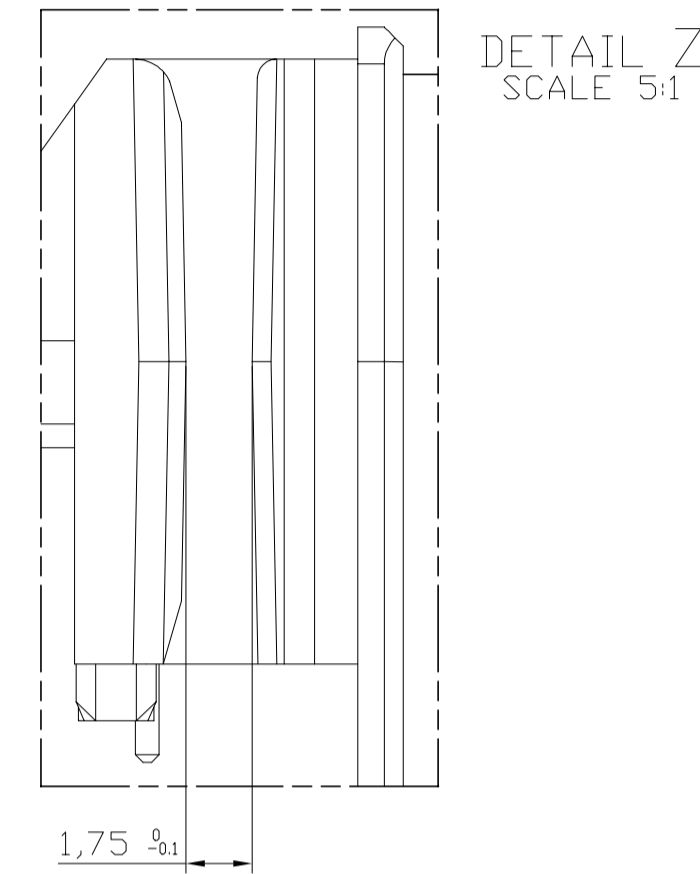
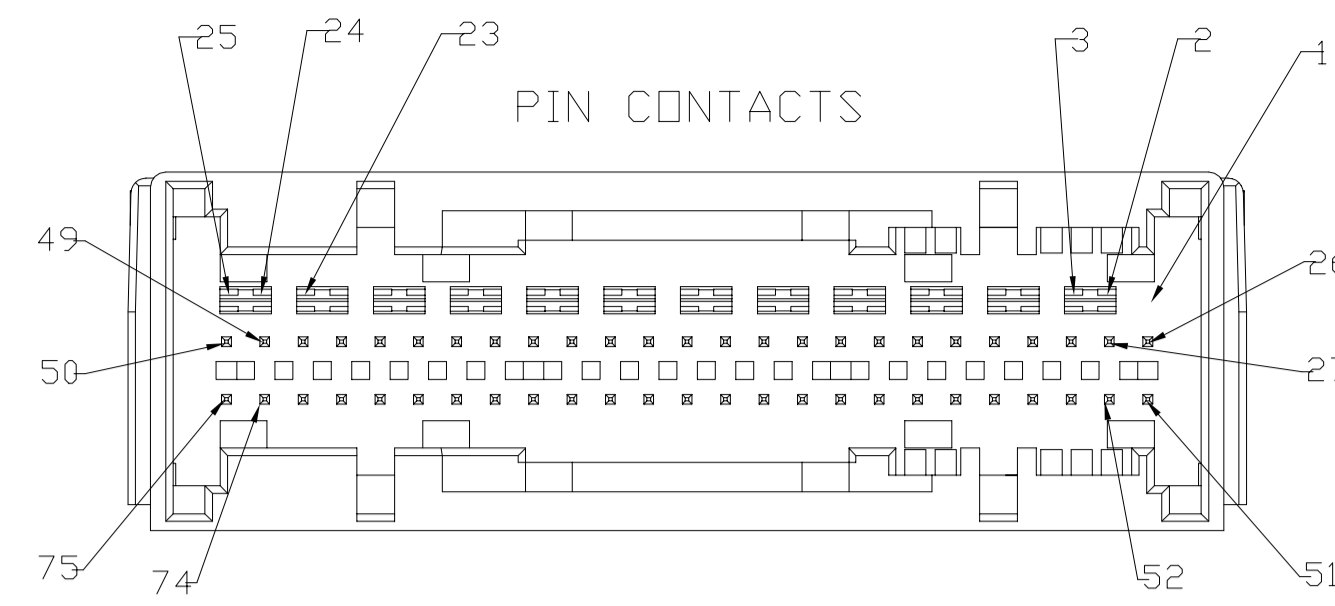
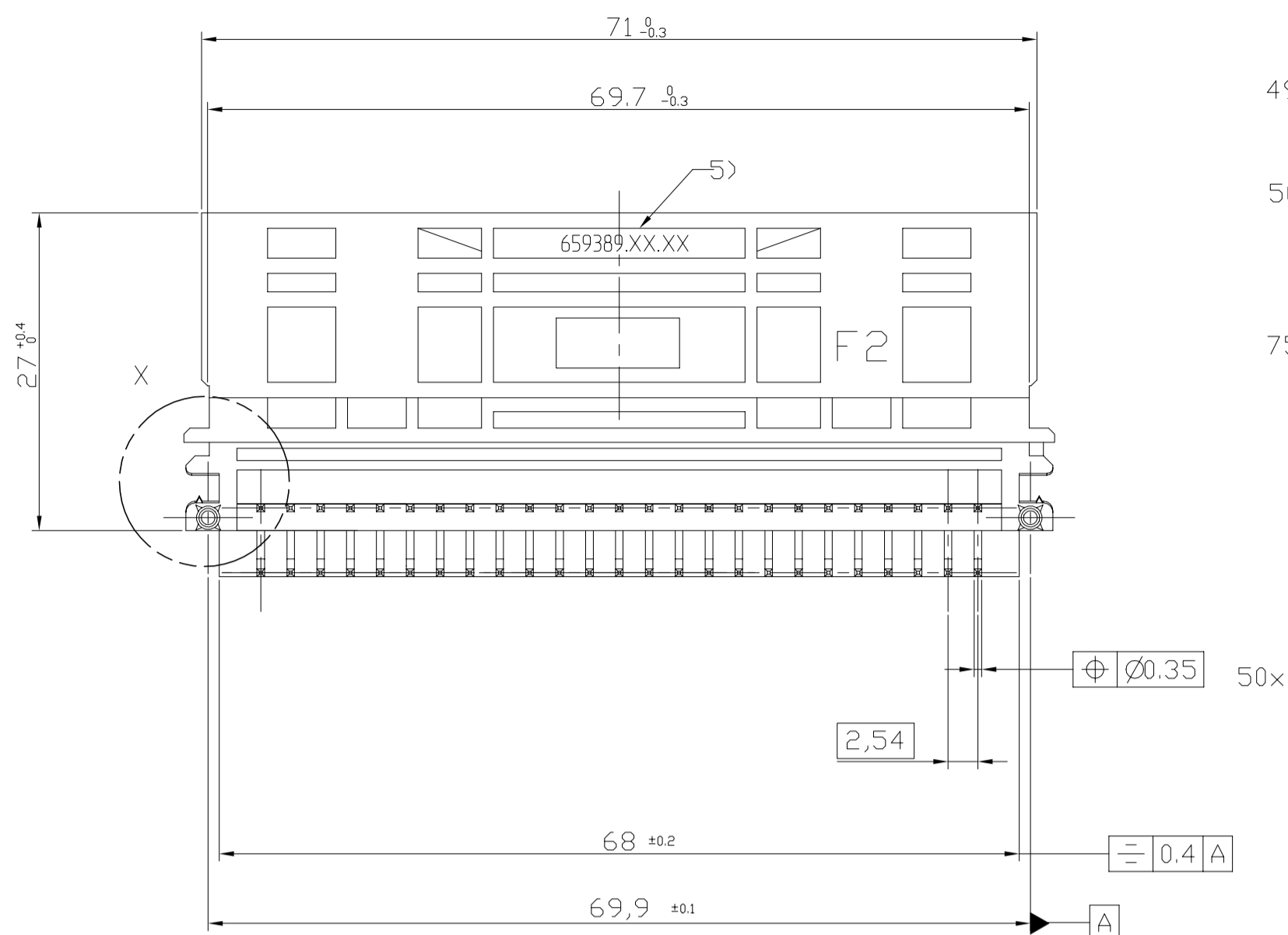
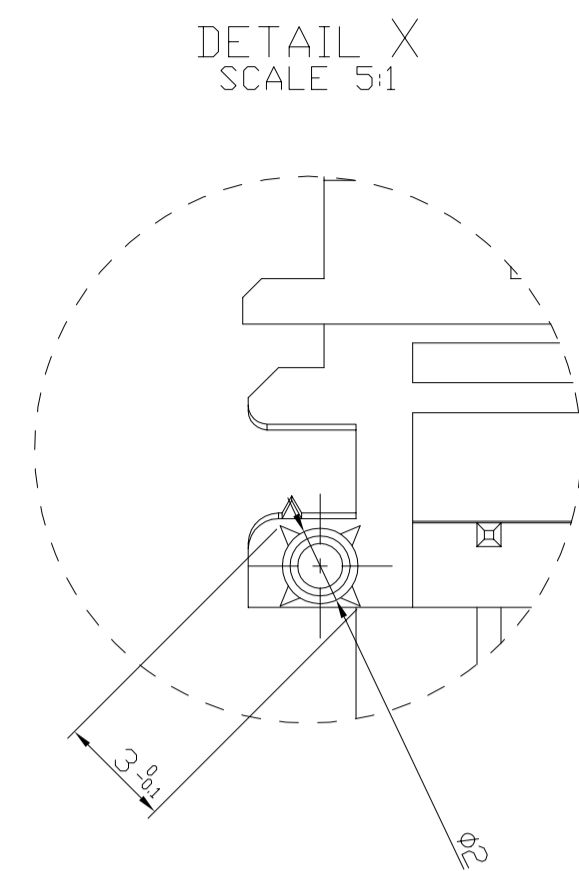
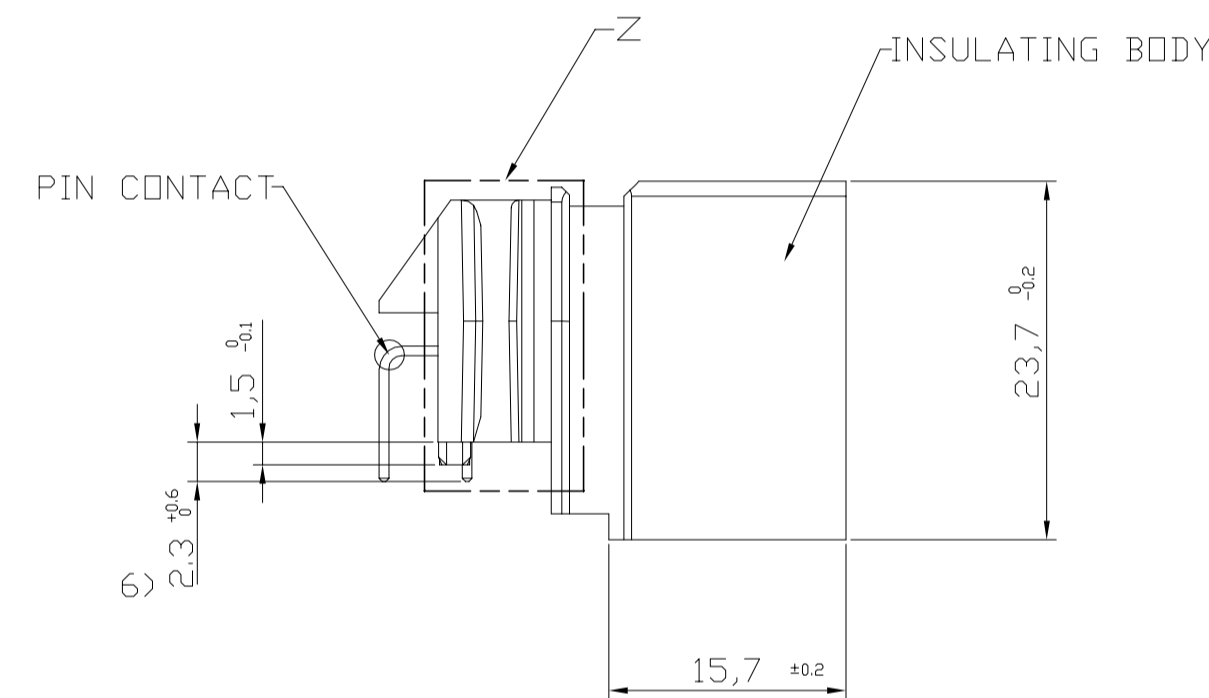
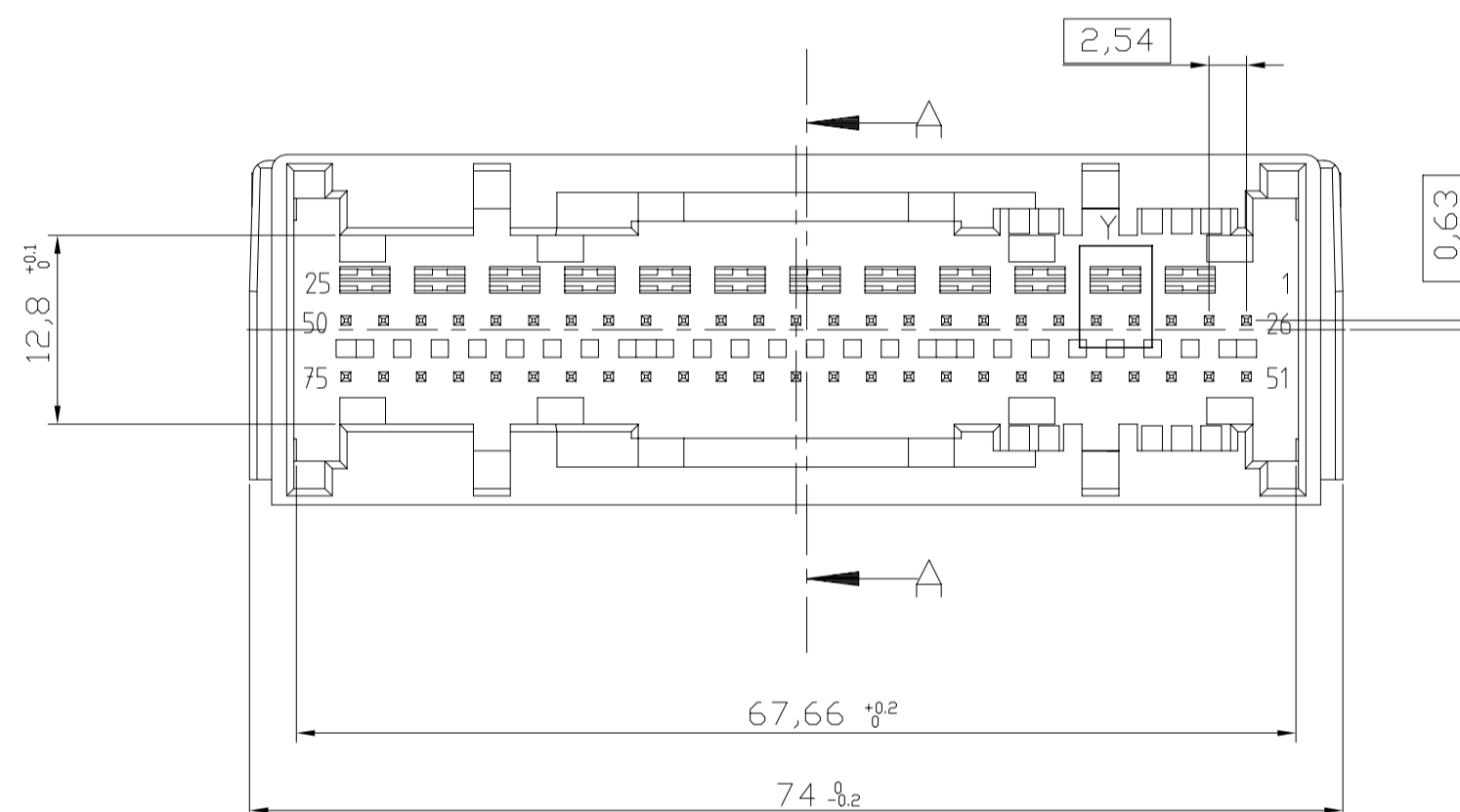
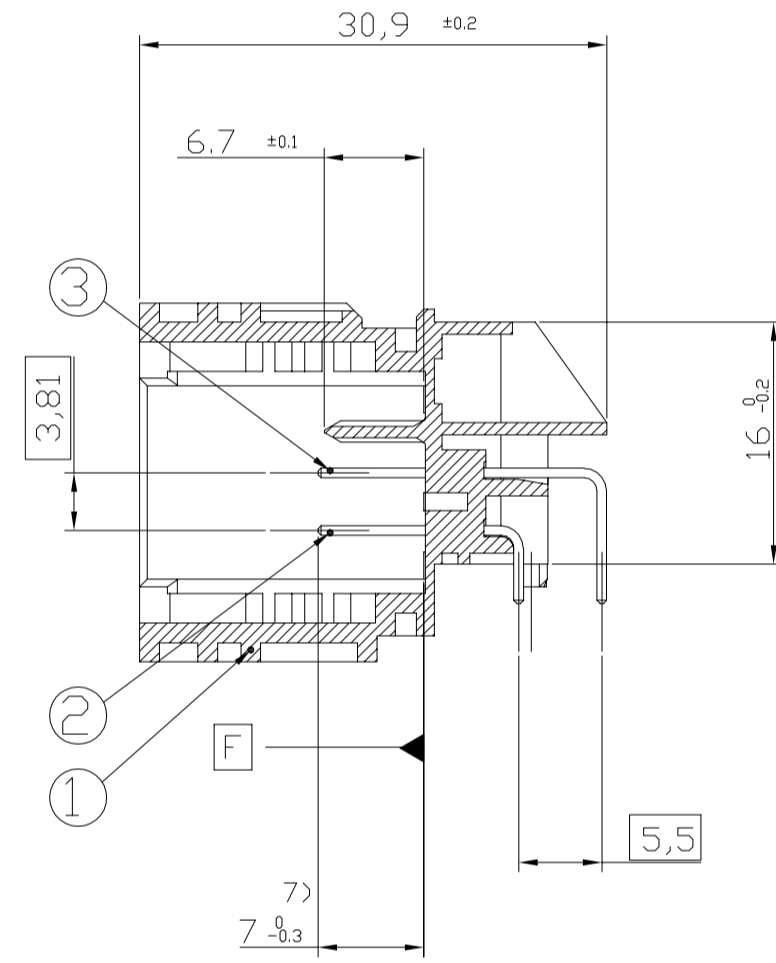


REVISIONS				
P	LTR	DESCRIPTION	DATE	OWN APVD
G1		REVISED ECR-20-006478	18AUG2020	VI SPB



A-A



MATERIAL
 INSULATING BODY
 PBT GF 20
 RECYCLE MATERIAL MAX 25%
 COLOR SEE TABLE

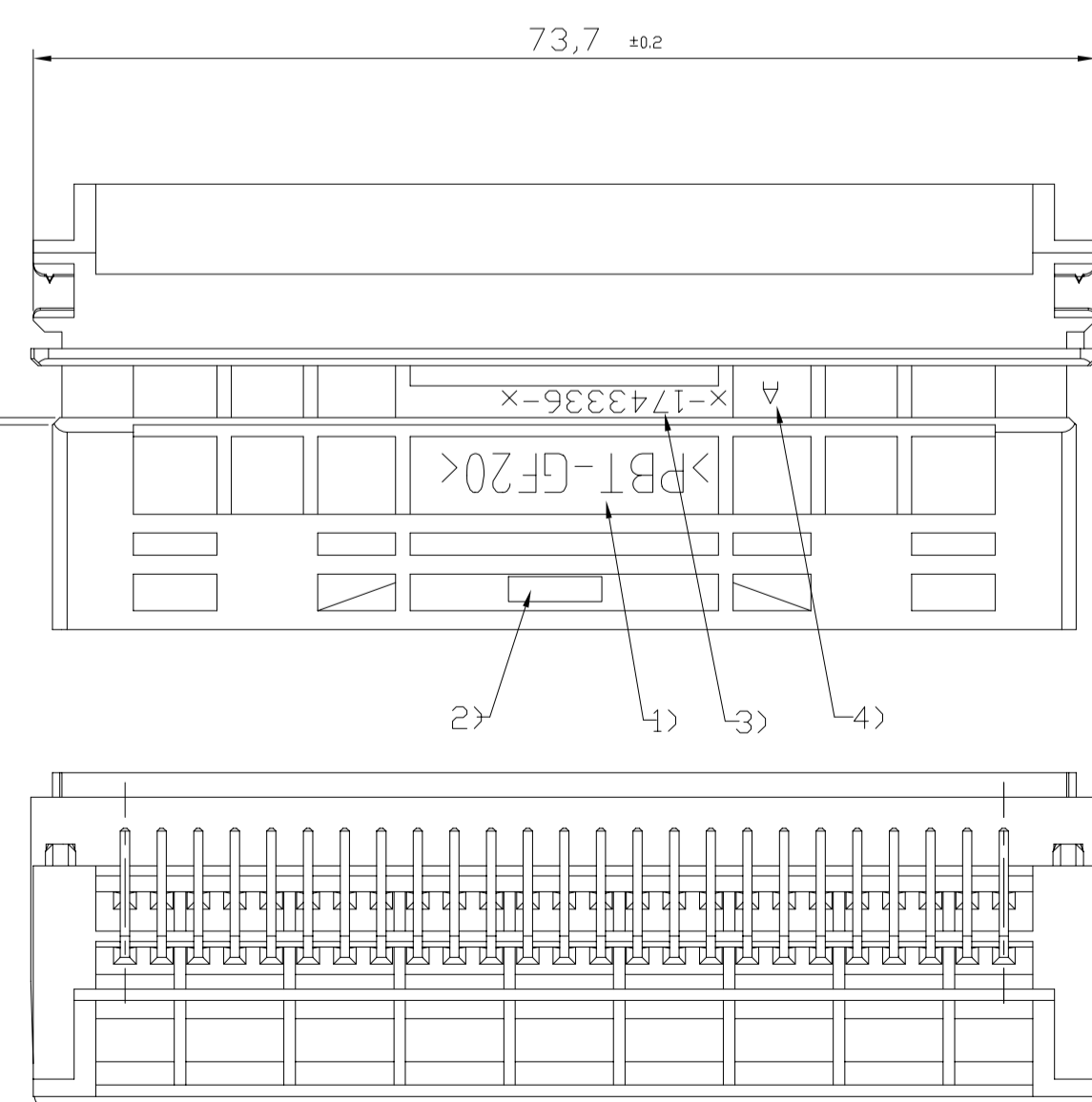
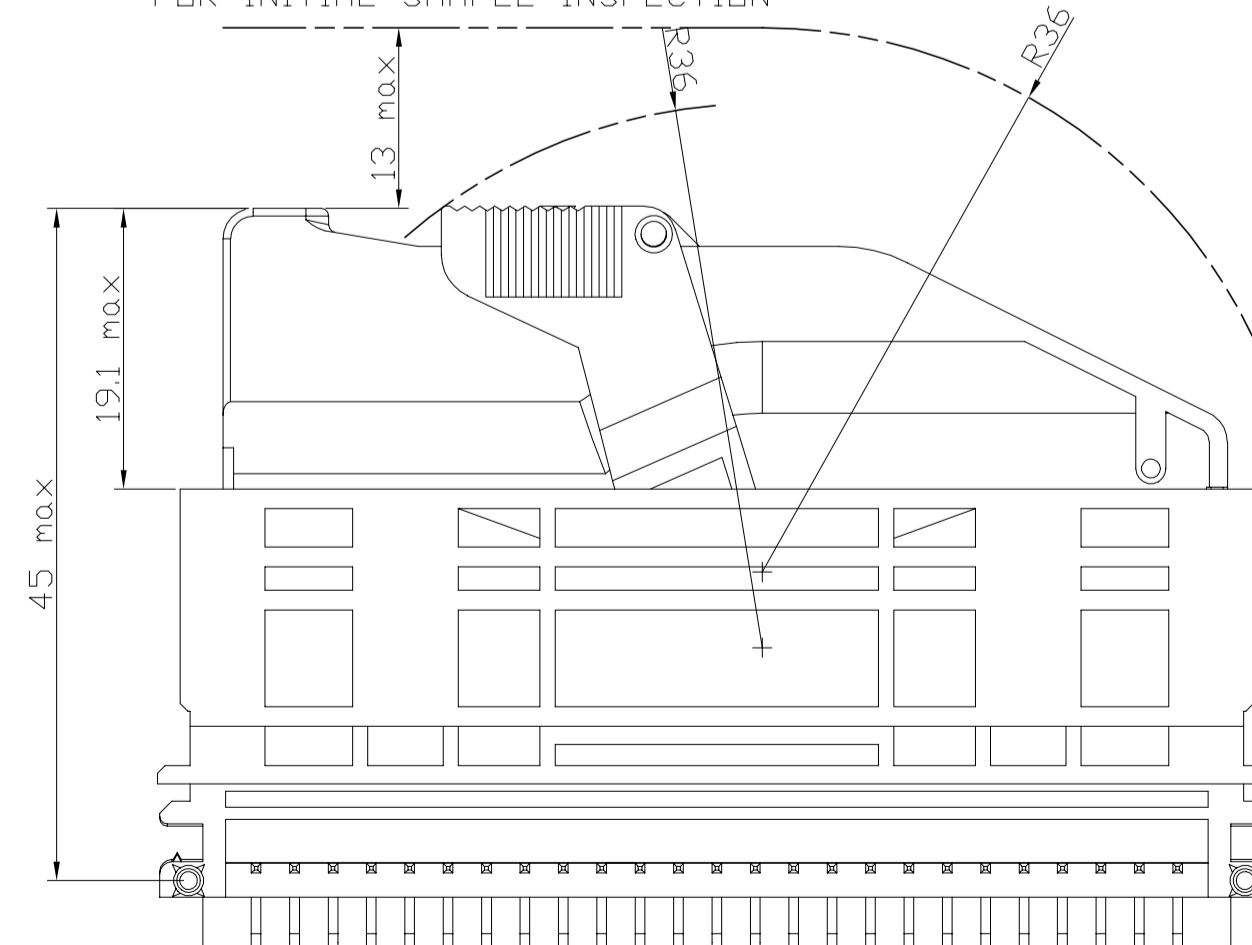
PIN CONTACT 063
 CuSn6 OR CuFe2
 FINISH:
 MATING AREA : 0.8*1mm Au OVER 1.2*1mm Min Ni
 SOLDERING AREA : 2-4*1mm Sn OVER 1.2*1mm Min Ni

PUSH-OUT FORCE IN DIRECTION OF CONNECTION:
 >25 N WITH V=25 MM/MIN AFTER SOLDERING
 STEADY LOAD AT 85±0.5°C:
 5A AT ONE PIN, WHEN AT ALL OTHER PINS 1A FLOWS
 INITIAL RESISTANCE <=20 mOHM

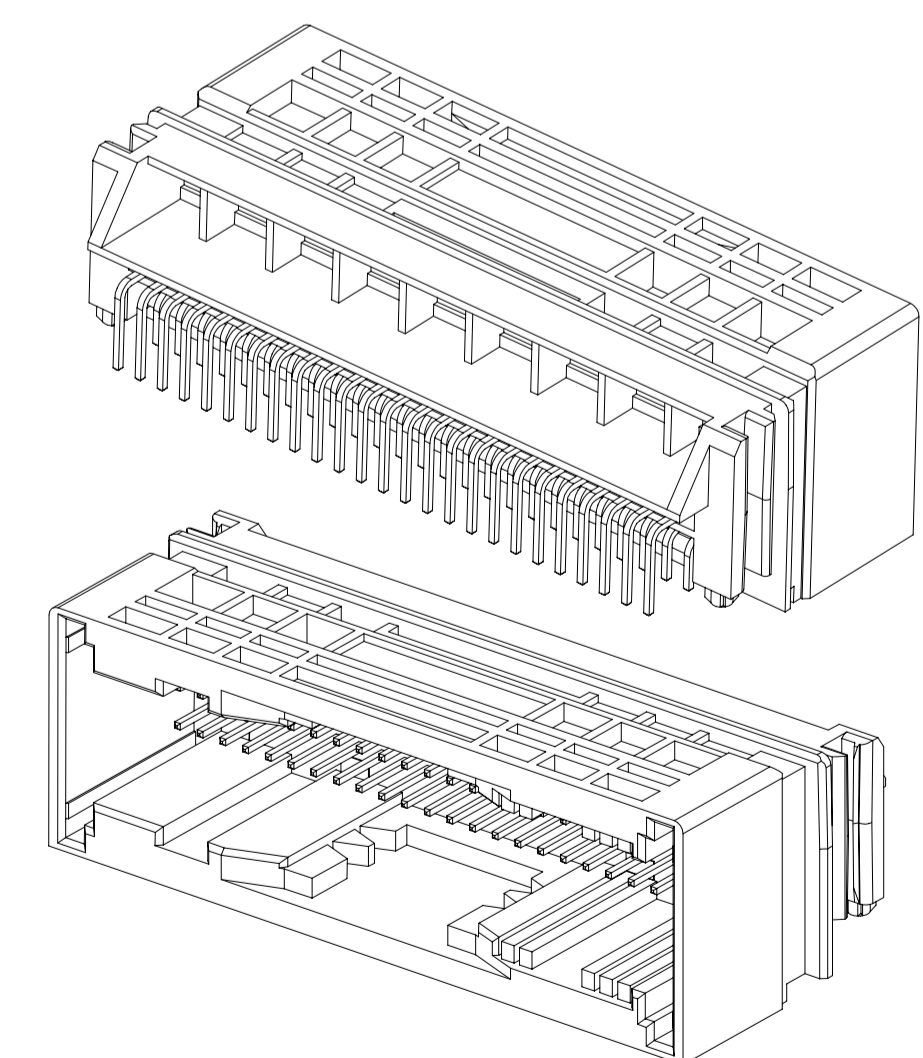
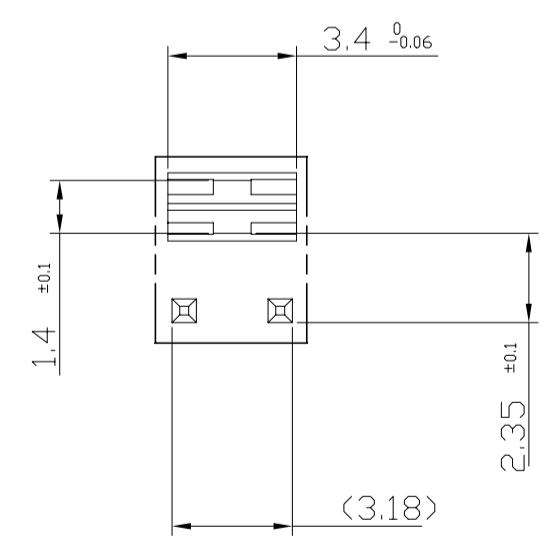
- 13) DATE CODE INSULATING BODY
- 12) TOLERANCE VALID UP TO 7MM OVER BOTTOM; OTHERWISE -0.1, +0.2
- 11) MEASUREMENT POINTS FOR REFERENCES D AND E
- 10) MEASURED AT PIN TOP (7 MM ABOVE BOTTOM)
- 9) MEASURED AT BOTTOM (POINT F)
- 8) MEASUREMENT POINTS FOR REFERENCE B AND C
- 7) MATING AREA MIN. 5.1
- 6) SOLDERING AREA UP TO BENDING EDGE (MIN)
- 5) PART NO. SIEMENS AT
- 4) CAVITY SYMBOL
- 3) PART NO. FOR TE ASS'Y
- 2) MANUFACTURER LOGO SCRIPT HEIGHT 1.5 MM
- 1) MATERIAL SYMBOL

-ALL KEYS POSSIBLE WITH INSERTS
 -NO KISHRI WITH ENGAGEMENT FORCE <=50 N
 -CABLE OUTLET LEFT AND RIGHT
 -NO FREE METALL PARTS PRESENT
 -CONNECTOR: FREE OF CADMIUM <=50PPM
 -STABILITY OF THE CONNECTOR SYSTEM:
 100N TENSILE FORCE OF THE WIRING HARNESS AND
 100N PRESSURE FORCE OF THE FEMALE CONNECTOR
 IN EACH DIRECTIONS

ASSEMBLY POSITION
 DIMENSION OF THIS VIEW NOT RELEVANT
 FOR INITIAL SAMPLE INSPECTION



DETAIL Y SCALE 5:1

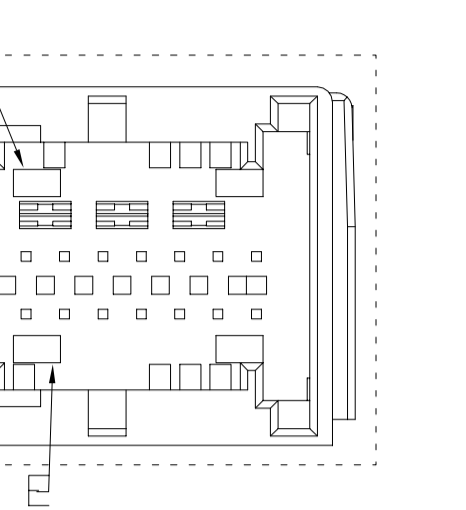
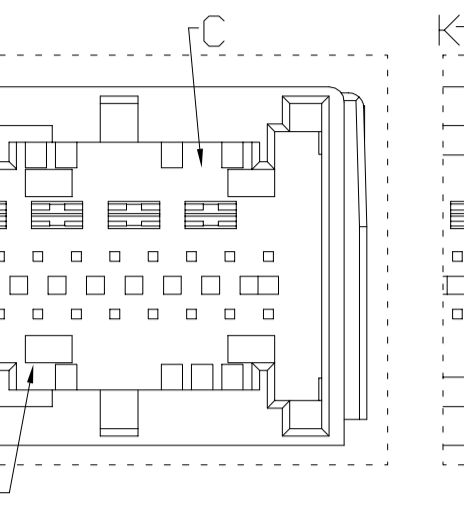
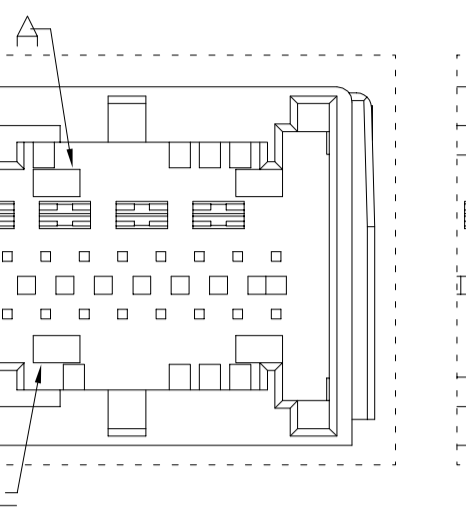
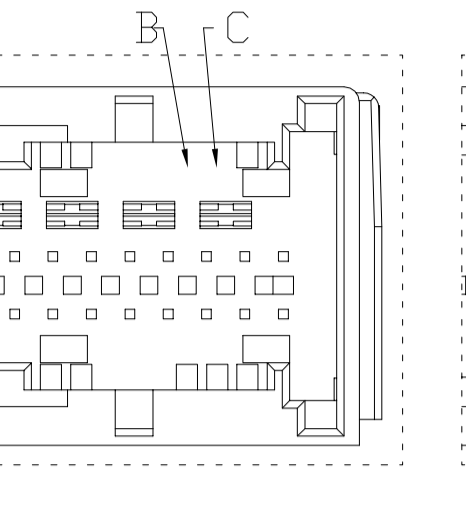
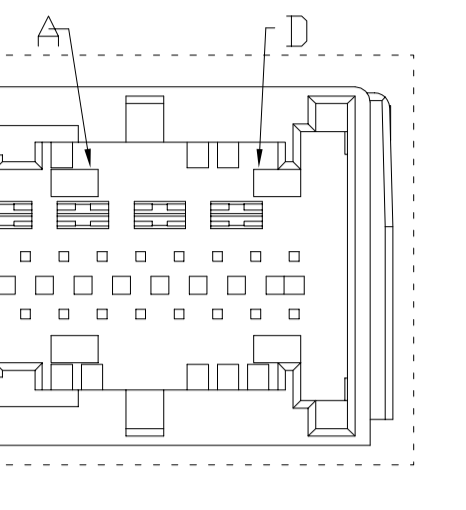
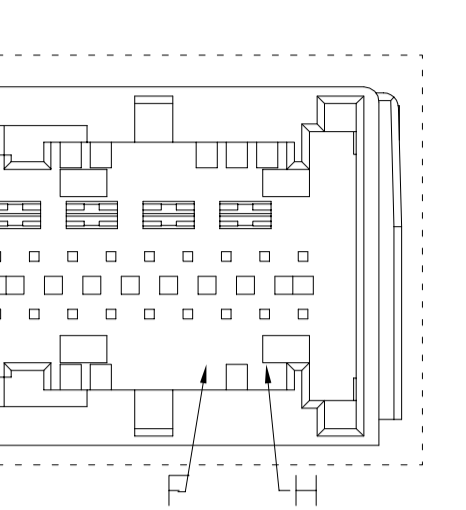
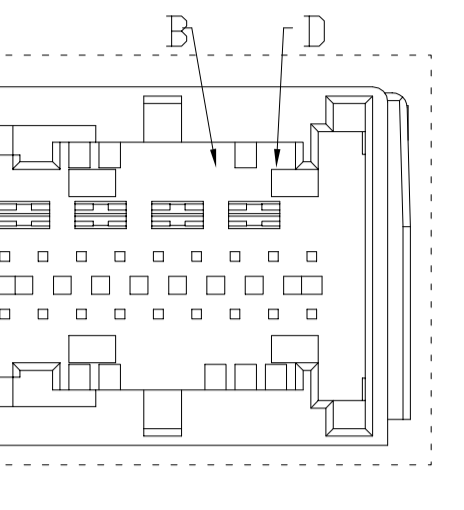
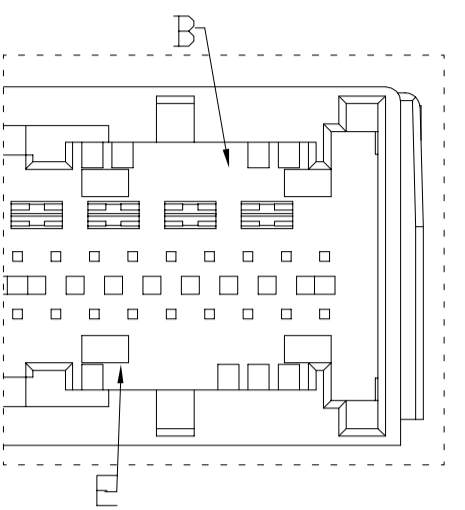
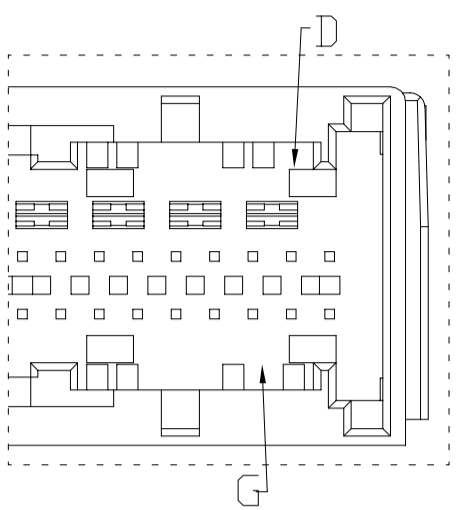
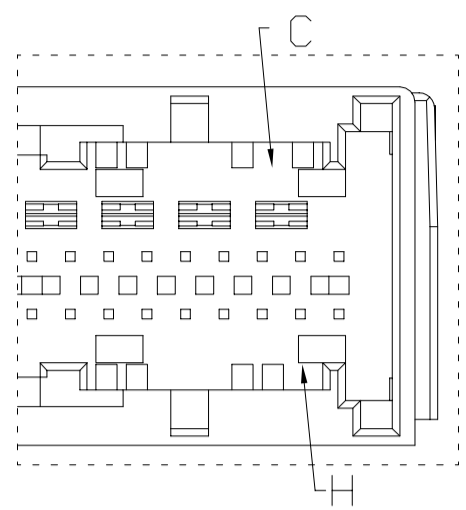
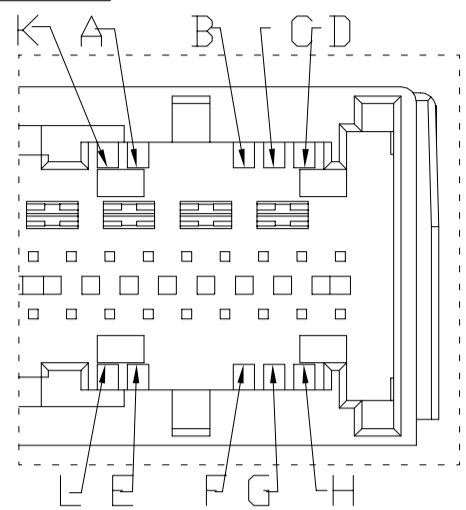


TOLERANCES UNLESS OTHERWISE SPECIFIED:
0 CXXX10 ± 0.2
10 CXXX30 ± 0.25
30 CXX ± 0.3
ANGLES ± 3°

THIS DRAWING IS A CONTROLLED DOCUMENT.		DW: S.J. CHOI		TE Connectivity	
DIMENSIONS: mm		CHK: J.W. JUNG		NAME: AIR BAG 75P HEADER ASSEMBLY (FA-II)	
TOLERANCES UNLESS OTHERWISE SPECIFIED:		APVD: H.C. CHO		PRODUCT SPEC: -	
0 PLC ± -		PRODUCT SPEC: -		APPLICATION SPEC: -	
1 PLC ± -		WEIGHT: 0		SIZE: A1	
2 PLC ± -		CUSTOMER DRAWING		CAGE CODE: 00779	
3 PLC ± -		SCALE: 1:1		DRAWING NO: 1743336	
4 PLC ± -		SHEET: 1 OF 5		REV: G1	
ANGLES ± -		RESTRICTED TO: -		REV: G1	

REVISIONS				
P	LTR	DESCRIPTION	DATE	DNW APVD
-	-	SEE SHEET 1	-	-

KEYS



(CODE C-H)

(CODE D-G)

(CODE B-E)

(CODE B-D)

(CODE F-H)

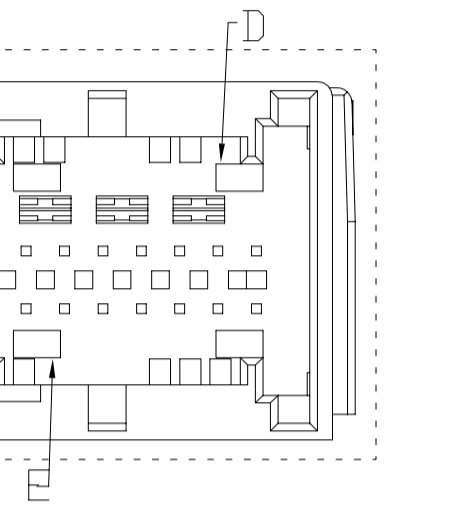
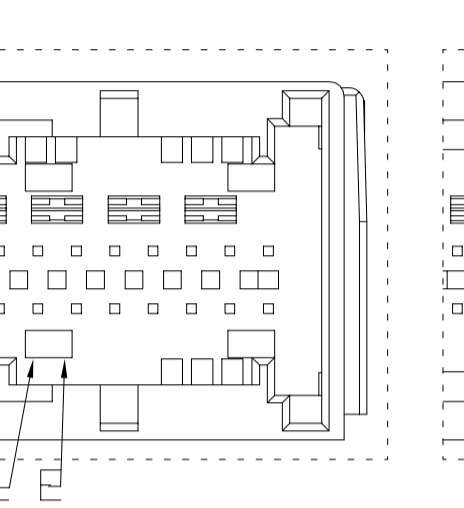
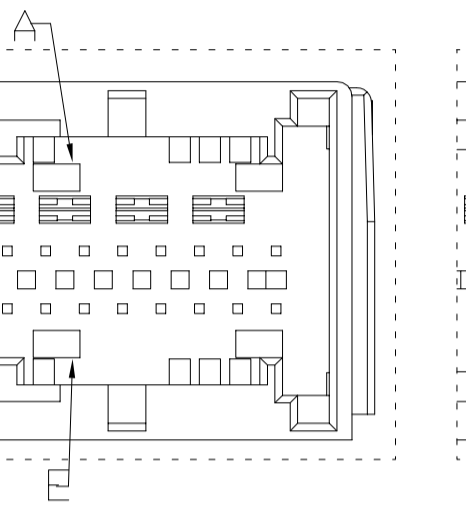
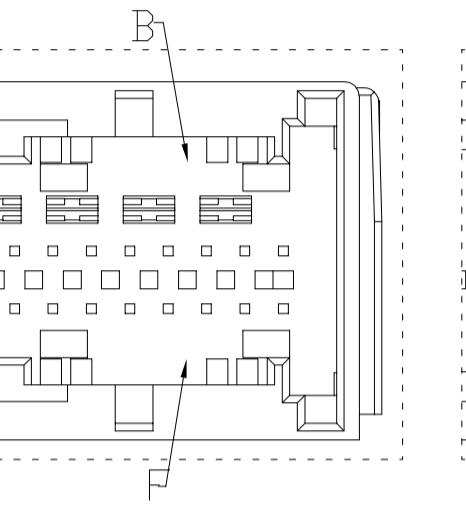
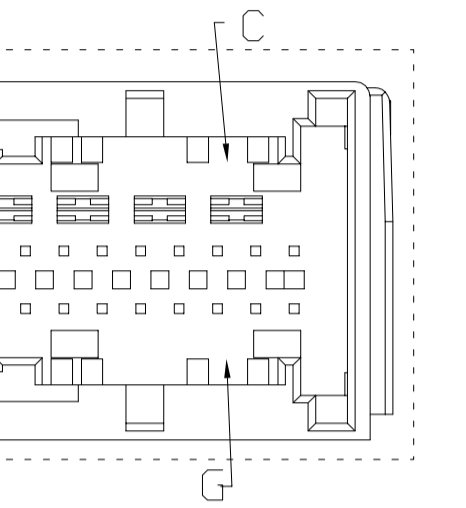
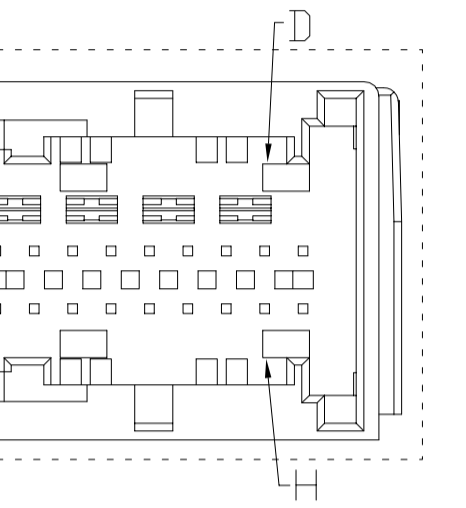
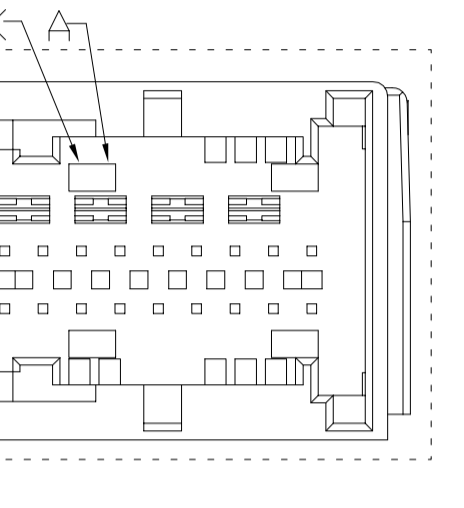
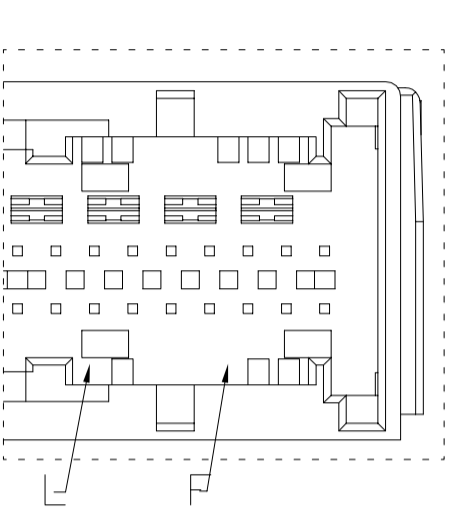
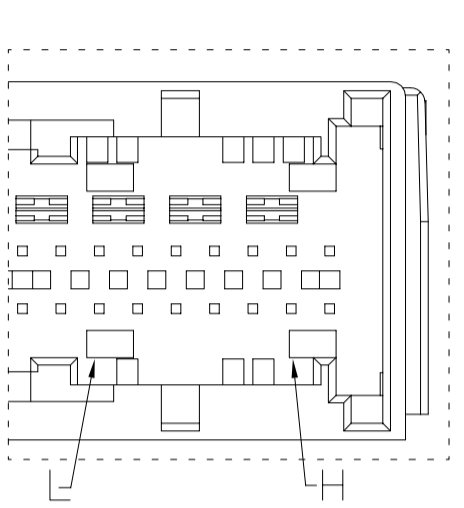
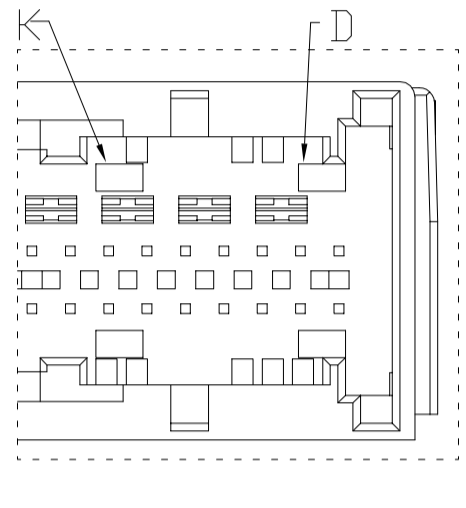
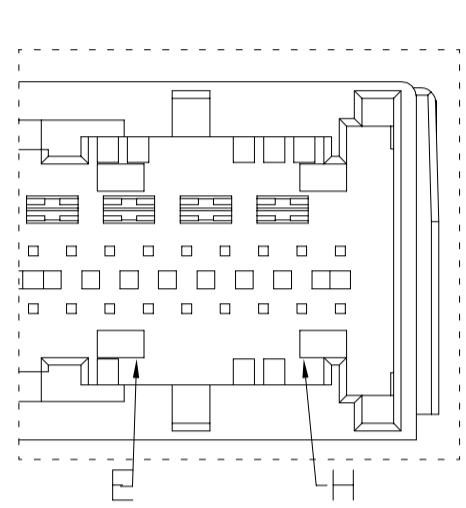
(CODE A-D)

(CODE B-C)

(CODE A-L)

(CODE C-L)

(CODE E-K)



(CODE E-H)

(CODE D-K)

(CODE H-L)

(CODE F-L)

(CODE A-K)

(CODE D-H)

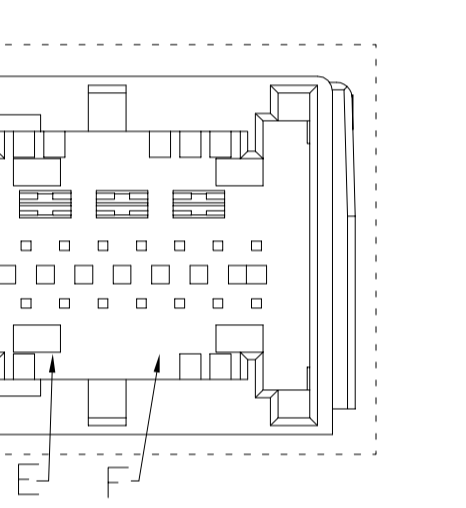
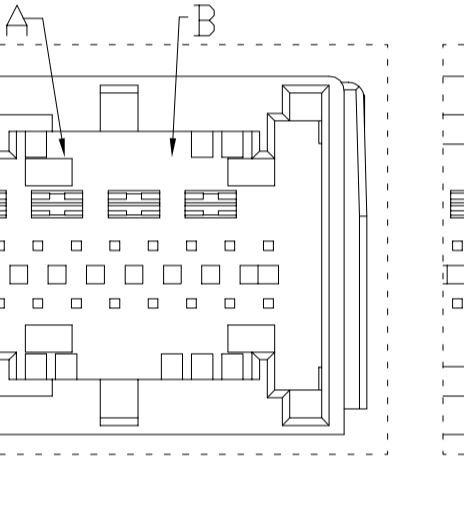
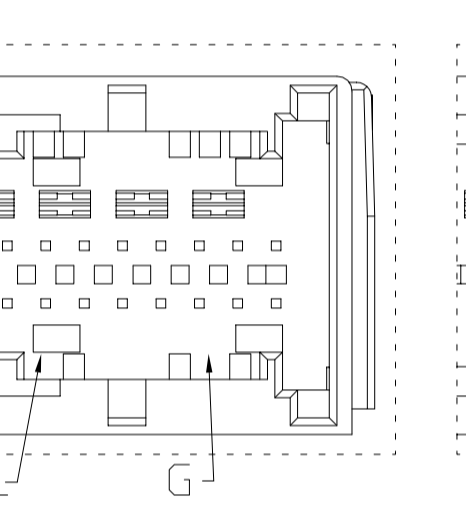
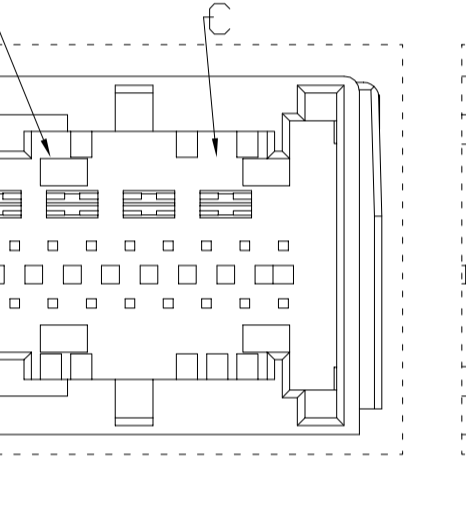
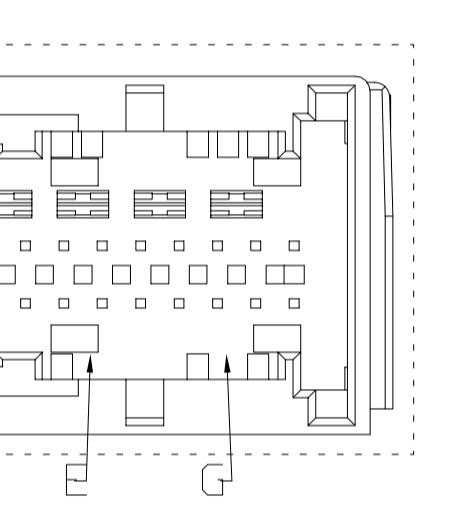
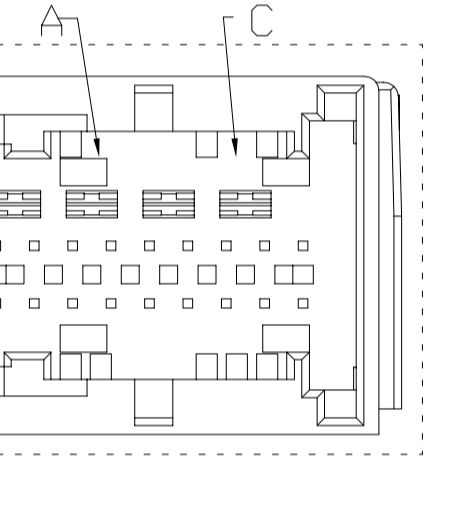
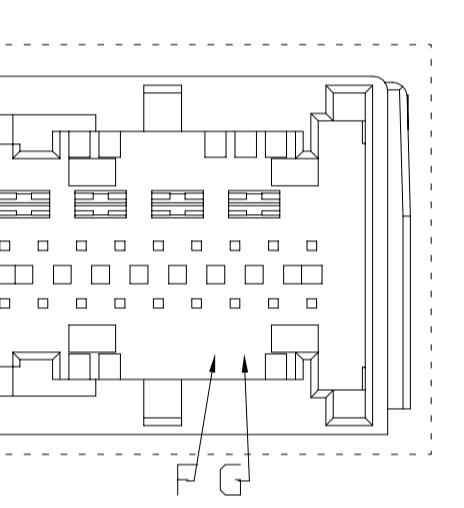
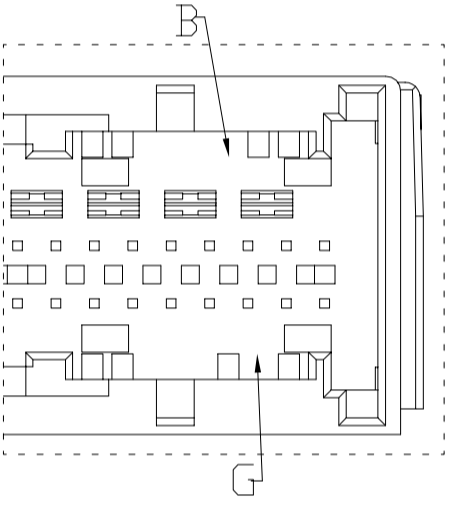
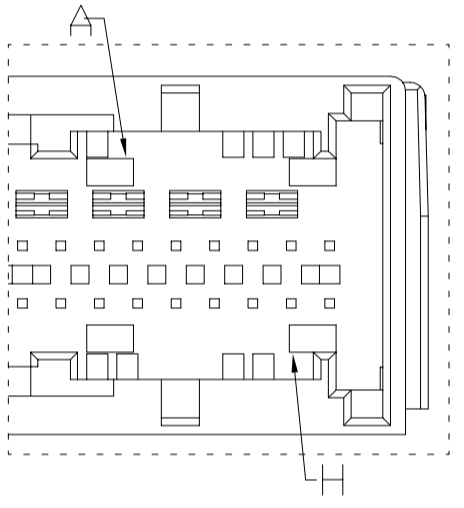
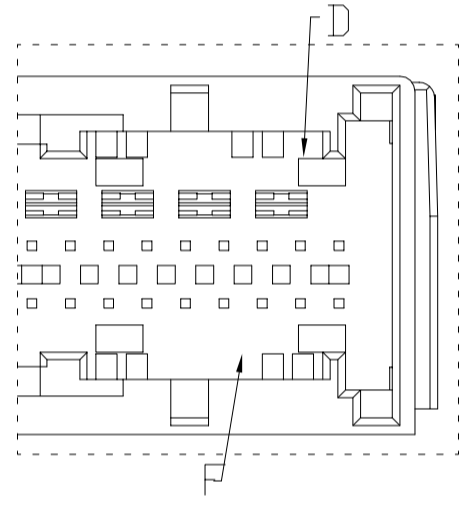
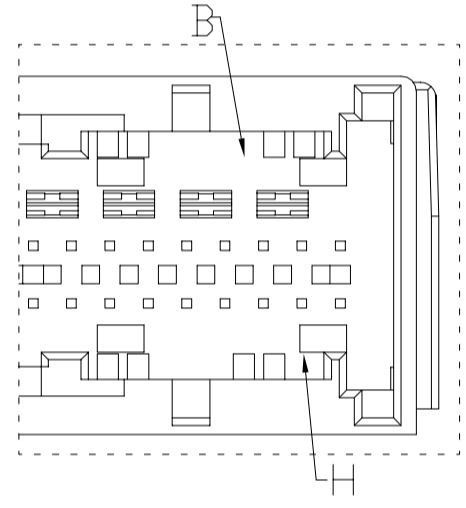
(CODE G-C)

(CODE B-F)

(CODE A-E)

(CODE E-L)

(CODE D-E)



(CODE B-H)

(CODE D-F)

(CODE A-H)

(CODE B-G)

(CODE F-G)

(CODE A-C)

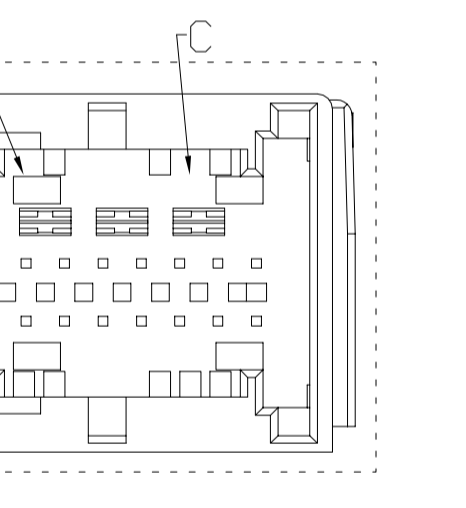
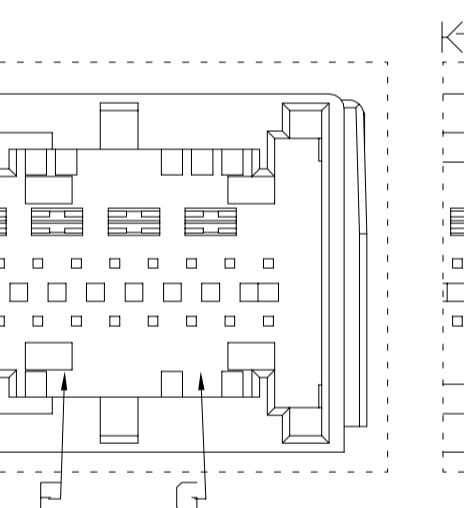
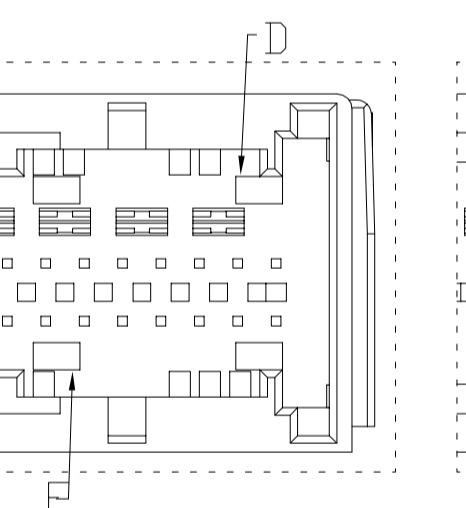
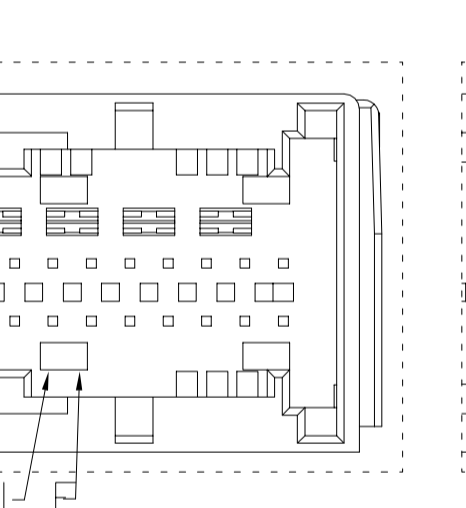
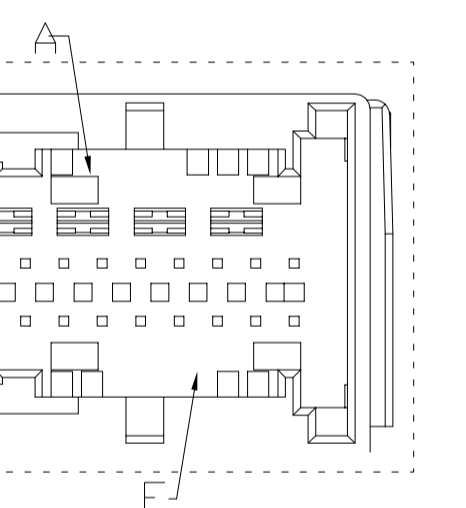
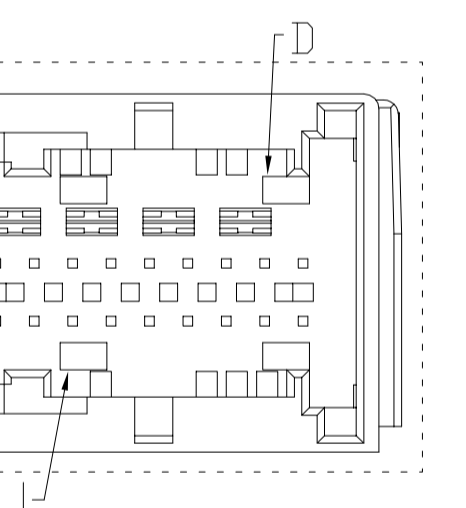
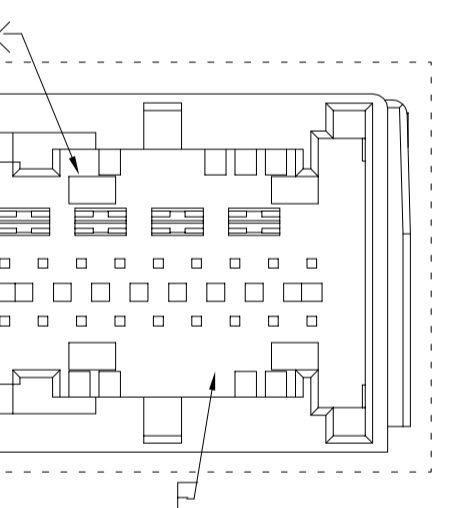
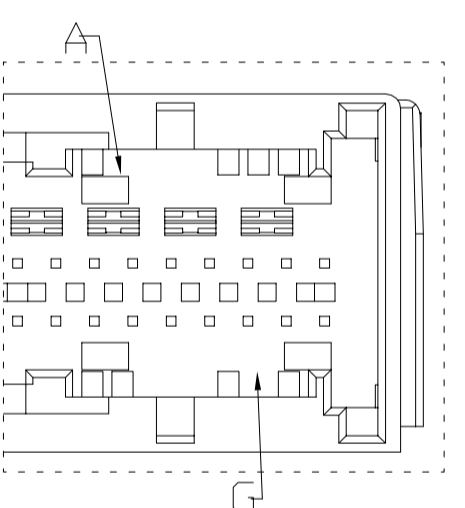
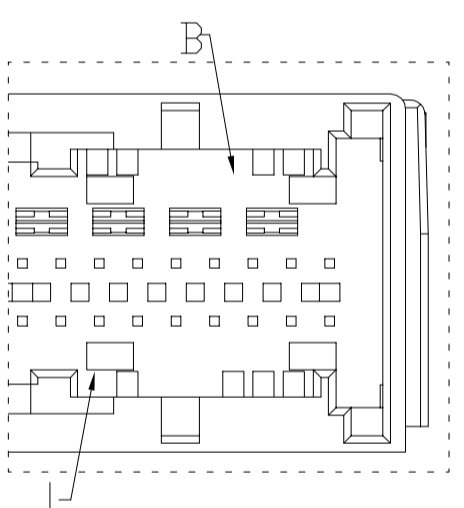
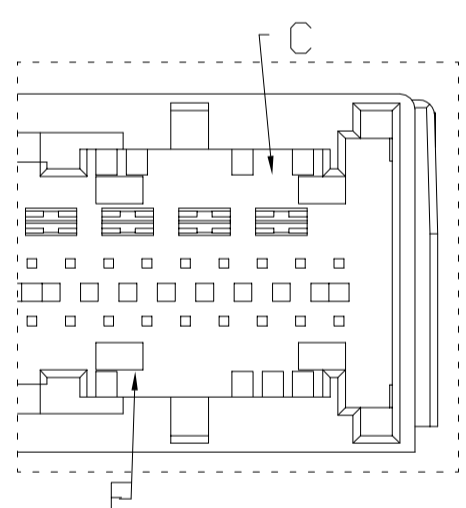
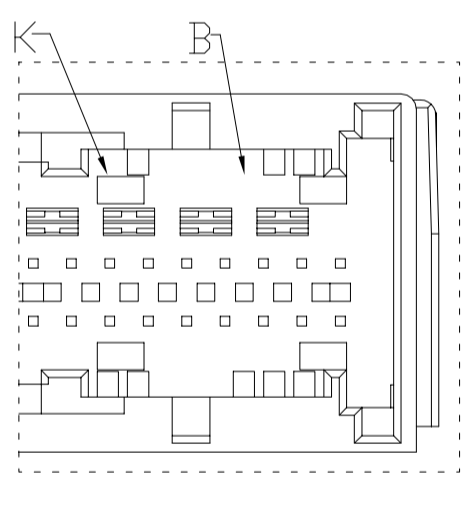
(CODE E-G)

(CODE C-K)

(CODE G-L)

(CODE A-B)

(CODE E-F)



(CODE B-K)

(CODE C-E)

(CODE B-L)

(CODE A-G)

(CODE F-K)

(CODE D-L)

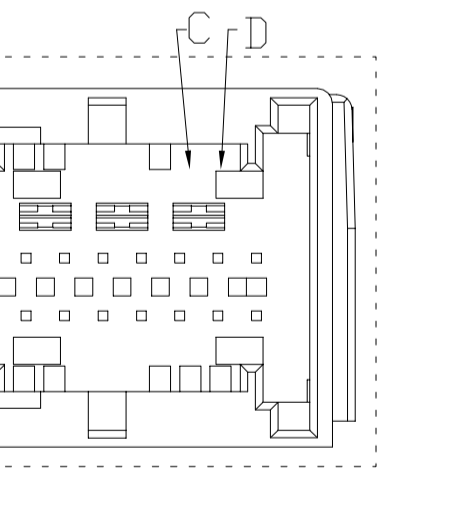
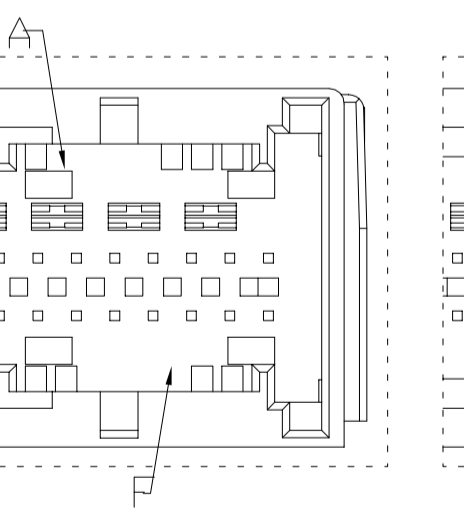
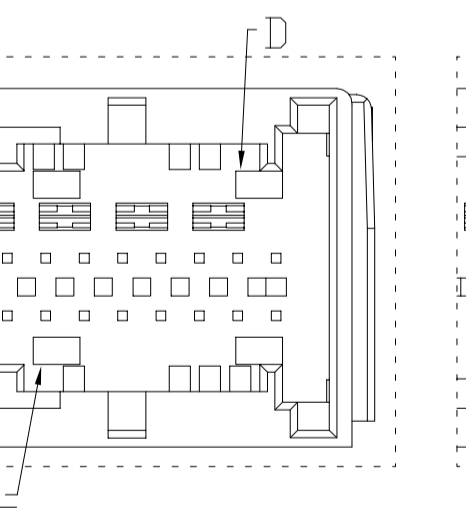
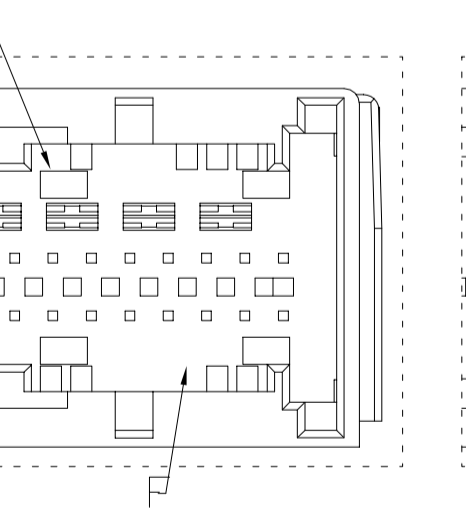
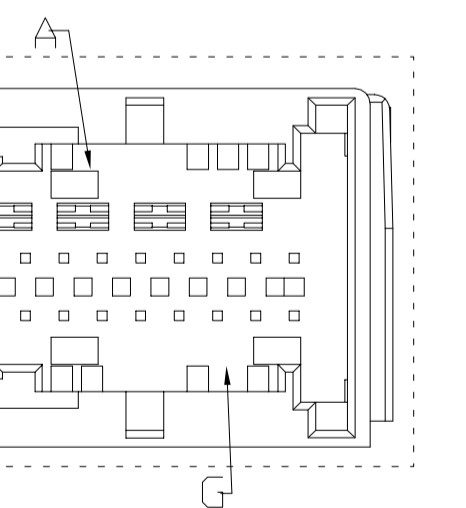
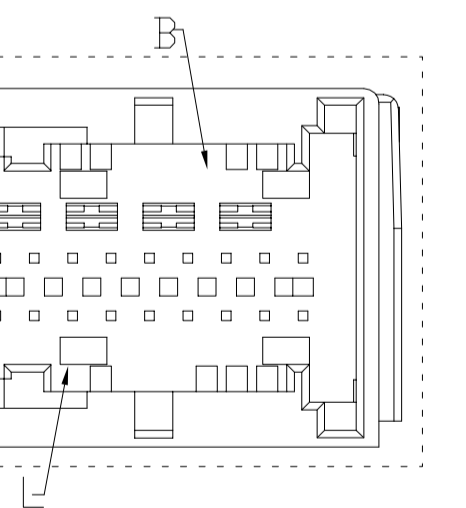
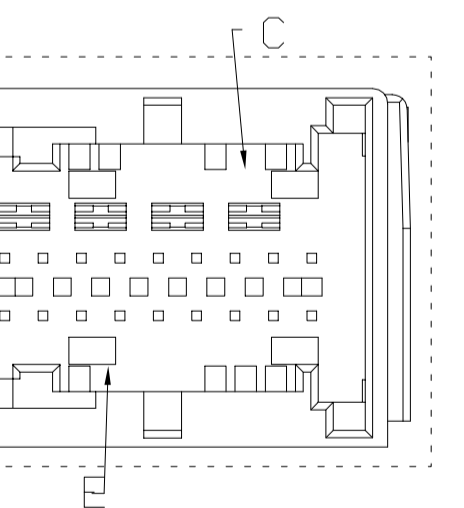
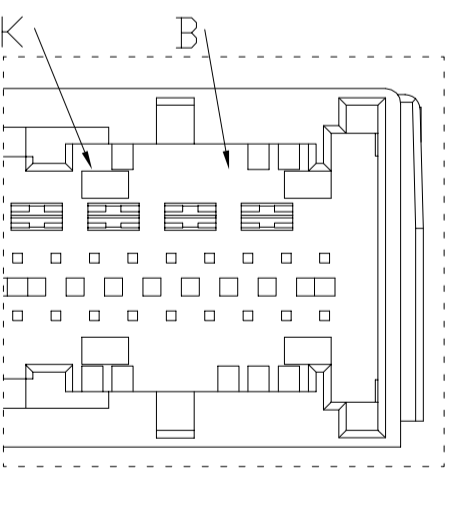
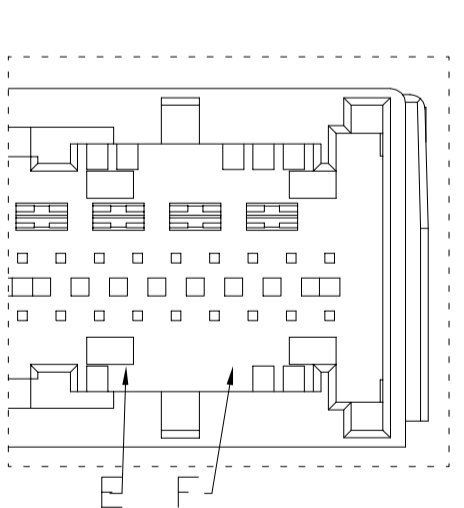
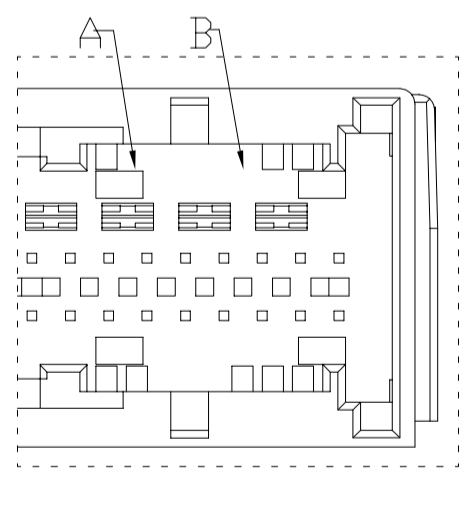
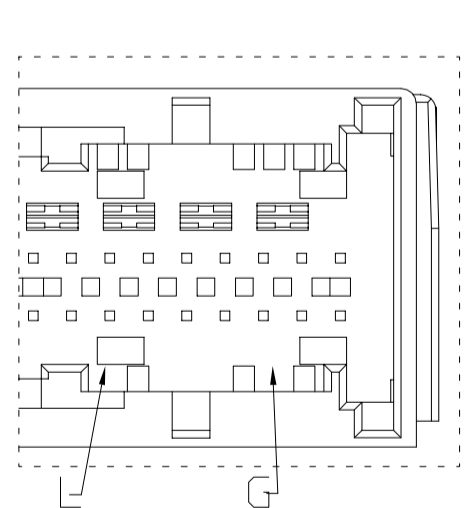
(CODE A-F)

(CODE E-L)

(CODE D-E)

(CODE E-G)

(CODE C-K)



(CODE G-L)

(CODE A-B)

(CODE E-F)

(CODE B-K)

(CODE C-E)

(CODE B-L)

(CODE A-G)

(CODE F-K)

(CODE D-L)

(CODE A-F)

(CODE C-D)

THIS DRAWING IS A CONTROLLED DOCUMENT.		DNW	-	TE Connectivity AIR BAG 75P HEADER ASSEMBLY (FA-II)
		SJ_CHOI	-	
		OK	-	
		JW_JUNG	-	
		APVD	-	NAME
		CHC_CHO	-	PRODUCT SPEC
			-	APPLICATION SPEC
			-	WEIGHT
			0	SIZE
				CAGE CODE
				DRAWING NO
				RESTRICTED TO
				SCALE
			1:1	SHEET
			2	OF
			5	REV
			G1	

REVISIONS				
P	LTR	DESCRIPTION	DATE	OWN APVD
-		SEE SHEET 1	-	-

OBSOLETE
 OBSOLETE
 OBSOLETE
 OBSOLETE
 OBSOLETE
 OBSOLETE
 OBSOLETE
 OBSOLETE
 OBSOLETE
 OBSOLETE
 OBSOLETE

QTY	REV	DESCRIPTION	UNIT	FINISH	PLATING	PIN CONTACTS	SIEMENS AT No	TE ASSY 33 PART NO.	CUSTOMER LOGO	ITEM																																		
1	1	8-1743337-1	A	B-G	↑	↑	RED BROWN (RAL 8012)	8-965981-9 26-40	A2C34860500	8-1743336-1																																		
1	1	7-1743337-9	A	A-H			BROWN BEIGE (RAL 1011)	8-965981-9 26-28,29-36 7-968455-7 54,56,58,60,62,72-75	A2C53340621	7-1743336-9																																		
1	1	7-1743337-8	A	A-C			JET BLACK (RAL 9005)	8-965981-9 26-28,29-30,33-34 7-968455-7 54,58,72-75	A2C53340630	7-1743336-8																																		
1	1	7-1743337-7	A	C-L			BEIGE GREY (RAL 7006)	8-965981-9 26-32 7-968455-7 54	A2C53338797	7-1743336-7																																		
1	1	7-1743337-6	A	L-K			SIGNAL BLUE (RAL 5005)	8-965981-9 37-50 7-968455-7 56-57,66-70,72-75	-	7-1743336-6																																		
1	1	7-1743337-5	A	G-H			TRAFFIC BLUE (RAL 5017)	8-965981-9 29-50 7-968455-7 52-61,66-70,72-75	-	7-1743336-5																																		
1	1	7-1743337-4	A	A-D			PASTEL VIOLET (RAL 4009)	8-965981-9 26-40 7-968455-7 52,54,57-59,61,68-75	KR 78 75	7-1743336-4																																		
1	1	7-1743337-3	A	F-H			OCEAN BLUE (RAL 5020)	8-965981-9 26-36 7-968455-7 52,54,57-59,61,72-75	KR 78 74	7-1743336-3																																		
1	1	7-1743337-2	A	B-D			SALMON PINK (RAL 3022)	8-965981-9 26-30,33-36 7-968455-7 52,54,57-59,61,72-75	KR 78 73	7-1743336-2																																		
1	1	7-1743337-1	A	C-D			TRAFFIC RED (RAL 3020)	8-965981-9 31-50 7-968455-7 52-57,68-70,72-75	-	7-1743336-1																																		
1	1	6-1743337-9	A	A-F			BLUE LILAC (RAL 4005)	8-965981-9 26-40 7-968455-7 54,56,58,60-62,68-75	KR 78 72	6-1743336-9																																		
1	1	6-1743337-8	A	D-L			ULTRA MARINE BLUE (RAL 5002)	8-965981-9 26-36 7-968455-7 54,56,58,60-62,72-75	KR 78 71	6-1743336-8																																		
1	1	6-1743337-7	A	F-K			LEAF GREEN (RAL 6002)	8-965981-9 26-40 7-968455-7 54,58,61-62,68-75	KR 78 70	6-1743336-7																																		
1	1	6-1743337-6	A	A-G			RESEDA GREEN (RAL 6011)	8-965981-9 26-36 7-968455-7 54,58,61-62,72-75	KR 78 69	6-1743336-6																																		
1	1	6-1743337-5	A	B-L			BRILLIANT BLUE (RAL 5007)	8-965981-9 26-30,33-36 7-968455-7 54,58,61-62,72-75	KR 78 68	6-1743336-5																																		
1	1	6-1743337-4	A	C-E			PLATINUM GREY (RAL 7036)	8-965981-9 26-40,45-50 7-968455-7 54,56,58,60-62,65,66,68-75	KR 78 67	6-1743336-4																																		
1	1	6-1743337-3	A	B-K			YELLOW ORANGE (RAL 2000)	8-965981-9 26-36,45-50 7-968455-7 54,56,58,60-62,65,66,68-75	KR 78 66	6-1743336-3																																		
1	1	6-1743337-2	A	E-F			HEADER VIOLET (RAL 4003)	8-965981-9 26-40,45-48 7-968455-7 54,56,58,60-62,68-75	KR 78 65	6-1743336-2																																		
1	1	6-1743337-1	A	A-B			LIGHT IVORY (RAL 1015)	8-965981-9 26-36 7-968455-7 54,56,58,60-62,72-75	KR 78 64	6-1743336-1																																		
-9	-8	-7	-6	-5	-4	-3	-2	-1	-9	-8	-7	-6	-5	-4	-3	-2	-1	-9	-8	-7	-6	-5	-4	-3	-2	-1	-9	-8	-7	-6	-5	-4	-3	-2	-1	-9	-8	-7	-6	-5	-4	-3	-2	-1
REQUIRED PER ASSEMBLY P/N				8-1743336				7-1743336				6-1743336				PART NO.	REV.	CODE	PART NAME	MATERIAL	FINISH/COLOR	PIN CONTACTS	SIEMENS AT No	TE ASSY 33 PART NO.	CUSTOMER LOGO	ITEM																		

THIS DRAWING IS A CONTROLLED DOCUMENT.		DW: SJ_CHOI CHK: JW_JUNG		TE Connectivity	
DIMENSIONS: mm		TOLERANCES UNLESS OTHERWISE SPECIFIED:		NAME: AIR BAG 75P HEADER ASSEMBLY (FA-II)	
		0 PLC ± - 1 PLC ± - 2 PLC ± - 3 PLC ± - 4 PLC ± - ANGLES ± - FINISH -		APVD: HJC_CHOI PRODUCT SPEC: - APPLICATION SPEC: - SIZE: A1 CAGE CODE: 00779 DRAWING NO: 1743336 RESTRICTED TO: -	
MATERIAL: PBT-CF20		WEIGHT: 0		SCALE: 1:1	
CUSTOMER DRAWING		SHEET 4 OF 5		REV G1	

REVISIONS					
P	LTR	DESCRIPTION	DATE	DWN	APVD
-	-	SEE SHEET 1	-	-	-

BARCODE OVERVIEW

CONNECTOR, ECU SIDE			
SIEMENS P/NO.	TE P/NO.	KEY CODE	MLFB
KR 9301.78.19	1-1743336-1	C-H	5WY6 7001
KR 9301.78.21	1-1743336-2	D-G	5WY6 7003
KR 9301.78.23	1-1743336-3	B-E	5WY6 7005
KR 9301.78.25	1-1743336-4	B-D	5WY6 7007
KR 9301.78.26	1-1743336-5	F-H	5WY6 7008
KR 9301.78.27	1-1743336-6	A-D	5WY6 7074
KR 9301.78.28	1-1743336-7	B-C	5WY6 7010
KR 9301.78.29	1-1743336-8	A-L	5WY6 7011
KR 9301.78.30	1-1743336-9	C-L	5WY6 7012
KR 9301.78.49	2-1743336-1	E-K	5WY6 7031
KR 9301.78.50	2-1743336-2	E-H	5WY6 7032
KR 9301.78.51	2-1743336-3	D-K	5WY6 7033
KR 9301.78.52	2-1743336-4	H-L	5WY6 7034
KR 9301.78.53	2-1743336-5	F-L	5WY6 7035
KR 9301.78.54	2-1743336-6	A-K	5WY6 7036
A2C53303201	2-1743336-7	D-H	5WY6 7037
KR 9301.78.56	2-1743336-8	C-G	5WY6 7038
A2C53303157	2-1743336-9	B-F	5WY6 7039
KR 9301.78.58	3-1743336-1	A-E	5WY6 7040
KR 9301.78.59	5-1743336-5	E-L	5WY6 7051
KR 9301.78.60	5-1743336-6	D-E	5WY6 7043
KR 9301.78.61	5-1743336-7	E-G	5WY6 7044
KR 9301.78.62	5-1743336-8	C-K	5WY6 7045
KR 9301.78.63	5-1743336-9	G-L	5WY6 7046
KR 9301.78.64	6-1743336-1	A-B	5WY6 7047
KR 9301.78.65	6-1743336-2	E-F	5WY6 7048
KR 9301.78.66	6-1743336-3	B-K	5WY6 7049
KR 9301.78.67	6-1743336-4	C-E	5WY6 7050
KR 9301.78.68	6-1743336-5	B-L	5WY6 7052
KR 9301.78.69	6-1743336-6	A-G	5WY6 7053
KR 9301.78.70	6-1743336-7	F-K	5WY6 7054
KR 9301.78.71	6-1743336-8	D-L	5WY6 7055
KR 9301.78.72	6-1743336-9	A-F	5WY6 7056

CONNECTOR, ECU SIDE			
SIEMENS P/NO.	TE P/NO.	KEY CODE	MLFB
KR 9301.78.73	7-1743336-2	B-D	5WY6 7057
KR 9301.78.74	7-1743336-3	F-H	5WY6 7058
KR 9301.78.75	7-1743336-4	A-D	5WY6 7059
A2C34860500	8-1743336-1	B-G	5WY6 7109

OBSOLETE

OBSOLETE

OBSOLETE

OBSOLETE

OBSOLETE

OBSOLETE

OBSOLETE

OBSOLETE

OBSOLETE

OBSOLETE

OBSOLETE

OBSOLETE


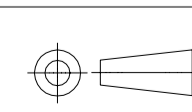
OBSOLETE

OBSOLETE

F

G

G

THIS DRAWING IS A CONTROLLED DOCUMENT.			DWN: SJ_CHOI	APVD: HIC_CHOI	 TE Connectivity					
DIMENSIONS: mm			CHK: JW_JUNG	PRODUCT SPEC: -	NAME: AIR BAG 75P HEADER ASSEMBLY (FA-II)					
			TOLERANCES UNLESS OTHERWISE SPECIFIED: 0 PLC ± - 1 PLC ± - 2 PLC ± - 3 PLC ± - 4 PLC ± - ANGLES ± - FINISH -		APPLICATION SPEC: -					
			MATERIAL: PBT-GF20	WEIGHT: 0		SIZE: A1 00779 C-1743336			RESTRICTED TO: -	
CUSTOMER DRAWING						SCALE: 1:1		SHEET: 5 OF 5		REV: G1

A

B

C

D