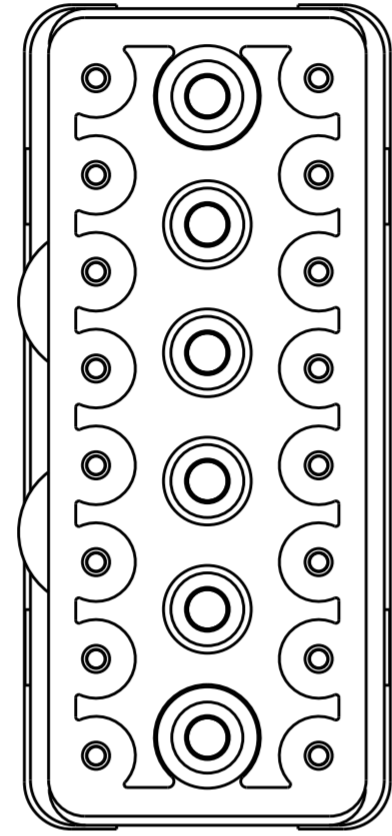
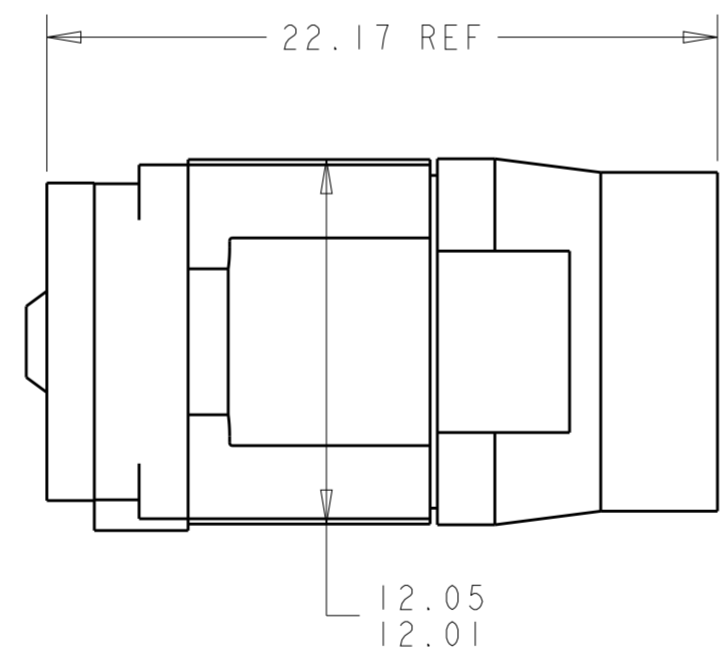
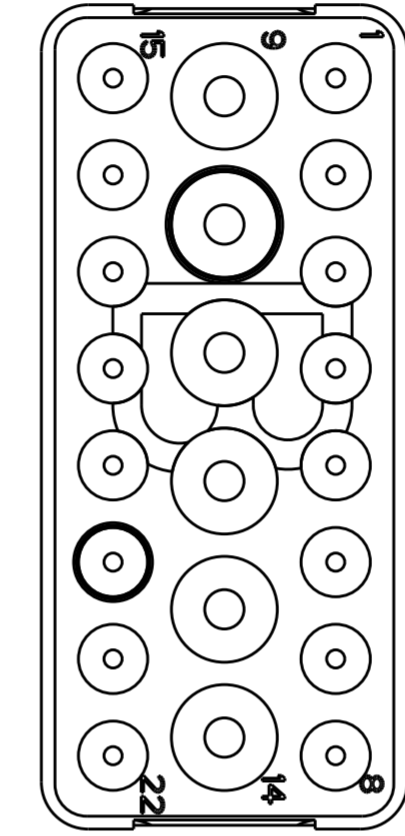
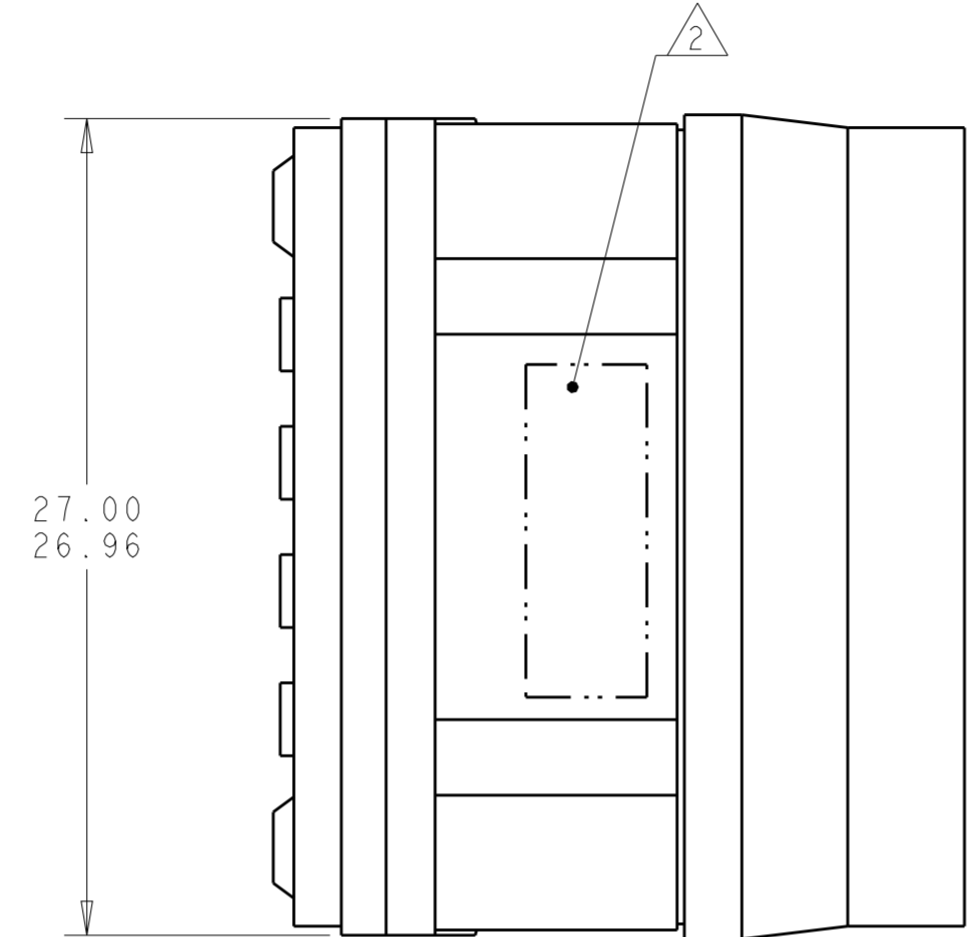


THIS DRAWING IS UNPUBLISHED. RELEASED FOR PUBLICATION
 © COPYRIGHT - BY - ALL RIGHTS RESERVED.

REVISIONS							
LOC	DIST	P	LTR	DESCRIPTION	DATE	DWN	APVD
-	-		B	REVISED PER ECO-12-018187	2NOV2012	CT	KH



MATING FACE



THIS PRODUCT HAS NOT COMPLETED VALIDATION TESTING

REMARKS	DESCRIPTIVE PART NO.	PART NUMBER
NON-ENV	GPRBN22PB	1738151-3
GROMMET ONLY	GPRBH22PB	1738151-2
ENVIRONMENTAL	GPRBE22PB	1738151-1

1 FRONT & REAR INSULATORS: HIGH-TEMP THERMOPLASTIC OR THERMOSET EPOXY PER ASTM D5948.
 CONTACT RETENTION CLIPS: STAINLESS STEEL PER AISI 302 OR COPPER ALLOY PER ASTM B194
 REAR GROMMET & INTERFACIAL SEAL: FLUROSILICONE ELASTOMER PER MIL-R-25988 B EXCEPT 4.6.6.1.

2 PART TO MARKED WITH TE IDENTIFICATION, TE PART NO. AND DATE CODE: YEAR & WEEK (YY WW) IN APPROXIMATE AREA SHOWN.

3. THIS INSERT CONTAINS: 16 CAVITIES FOR SIZE 20 PIN CONTACTS
 6 CAVITIES FOR SIZE 16 PIN CONTACTS

4. THIS PRODUCT IS SOLD BY TYCO ELECTRONICS UNDER A LICENSE FROM RADIAL SA.

THIS DRAWING IS A CONTROLLED DOCUMENT.		DWN C.C. THOMAS 10-8-10	TE Connectivity	
DIMENSIONS: mm		CHK K. HOGAN 10-8-10		
TOLERANCES UNLESS OTHERWISE SPECIFIED:		APVD K. HOGAN 10-8-10		
0 PLC ± 1 PLC ± 2 PLC ± 3 PLC ± 4 PLC ± ANGLES ± FINISH		NAME INSERT ASSEMBLY, PIN, ARRANGEMENT 22, KEY B, GPRB		
MATERIAL		PRODUCT SPEC -	APPLICATION SPEC -	SIZE A200779
		WEIGHT -	CAGE CODE C-1738151	DRAWING NO 1738151
CUSTOMER DRAWING			RESTRICTED TO -	SCALE 4:1
			SHEET 1 OF 1	REV B