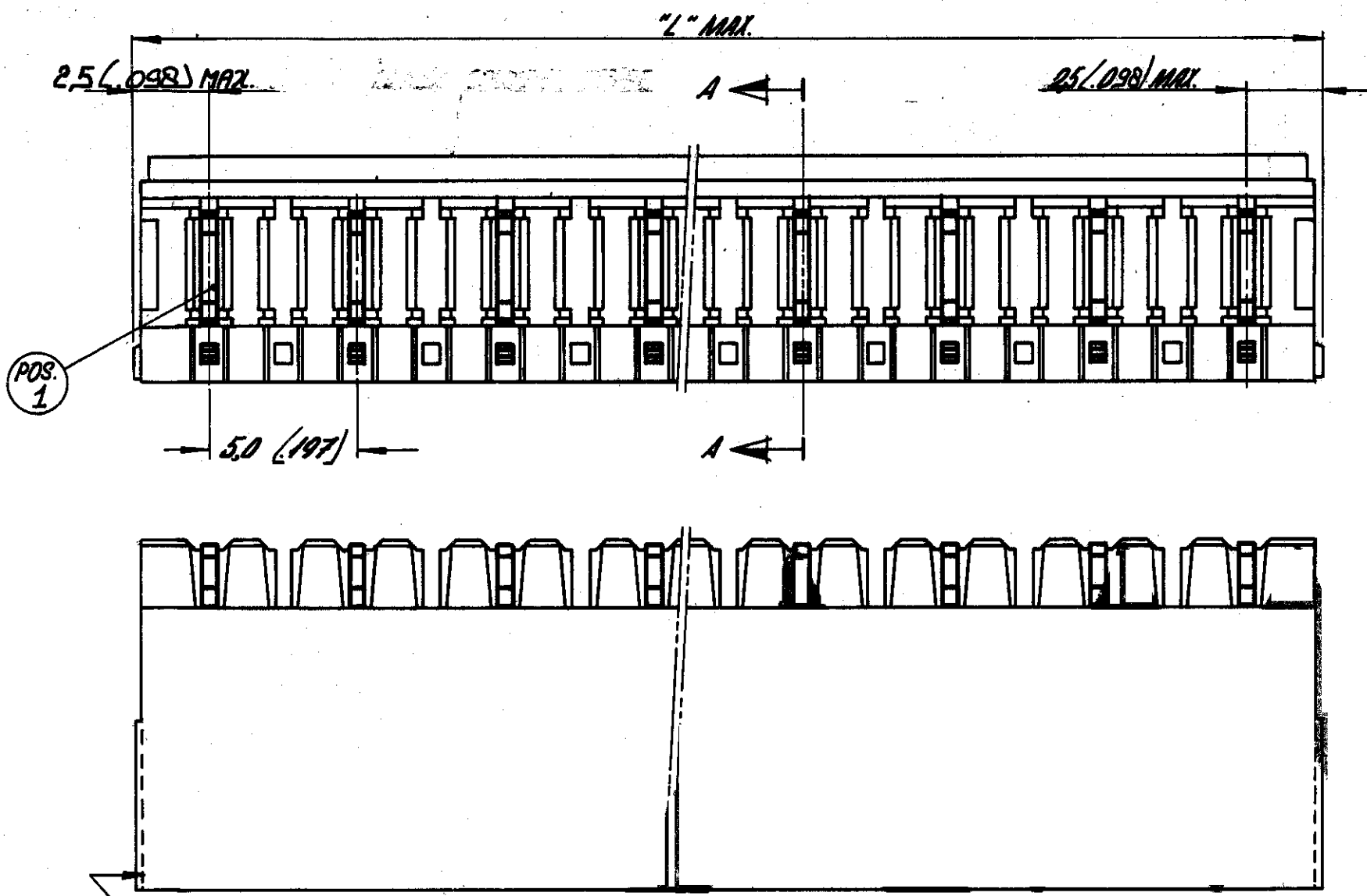
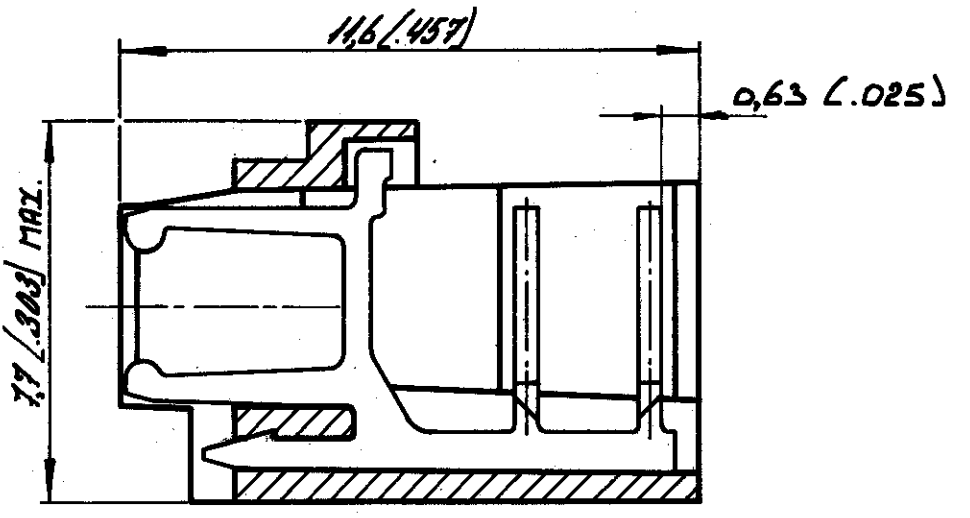


G1	ECR-08-014307	29-01-09	AEG	WRV
G2	ECO-09-025273	17NOV09	KK	AEG



POS. 1

OPTIONAL (2X)



SECTION A-A

	ORDER NUMBER	NUMBER OF POSITIONS:	2" MAX.	
			M.M.	INCH.
1	OBSOLETE	164852-2	2	10.1 .398
	OBSOLETE	-3	3	15.1 .594
		-4	4	20.1 .791
	OBSOLETE	-5	5	25.1 .989
		-6	6	30.1 1.185
		-7	7	35.1 1.382
1	OBSOLETE	-8	8	40.1 1.579
		-9	9	45.1 1.776
1	OBSOLETE	-10	10	50.1 1.973
	SUPERCEDED	-11	11	55.1 2.169
		-12	12	60.1 2.366
	SUPERCEDED	-13	13	65.1 2.563
	SUPERCEDED	-14	14	70.1 2.760
		-15	15	75.1 2.957

MATERIAL: HOUSING: P.B.T. 20% GLASS FILLED.
CONTACT: BRASS, TYP-LEAD (93/7) PLATING OVER NICKEL BARRIER

1 OBSOLETE PARTS: OBSOLETE CIS STREAMLINING PER D.RENAUD/D.SINISI

SEE TABLE.		SEE ABOVE.		SEE ABOVE.	
ORDER NO.		MATERIAL		PLATING	
CUSTOMER COPY FOR REFERENCE ONLY					
DR	DATE	©1978 BY AMP-HOLLAND N.V. ALL RIGHTS RESERVED A-MP PRODUCTS COVERED BY PATENTS AND/OR PATENTS PENDING.			 AMP - HOLLAND N.V. 's-Hertogenbosch
CHK	DATE				
DE	DATE	WIRE-RANGE	INSUL.-RANGE	FIRST USED	
APP	DATE	SCALE	SIZE	NO	REV
NAME 2-15 POS. FEMALE ON WIRE CONNECTOR ASSY (VERTICAL) FOR MINI MATCH INTERCONNECTION SYSTEM, PITCH: 5.0 mm.		N.T.S.		B	C-164852
				G2	

NUMBER 2-164852

DIMENSIONS IN M.M. DO NOT SCALE PRINT DIMENSIONS THRU () IN INCHES.