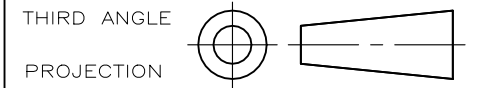


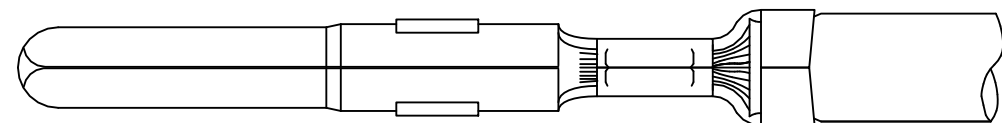
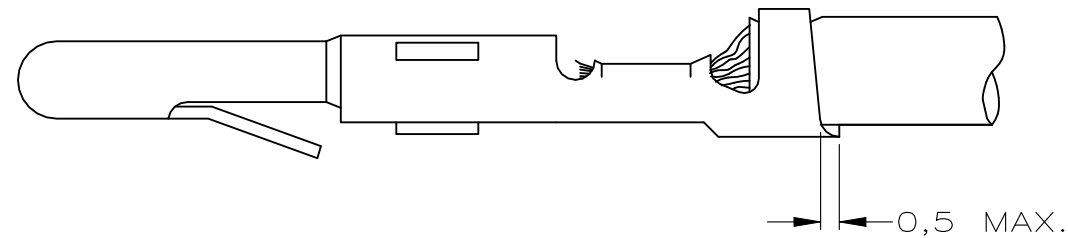
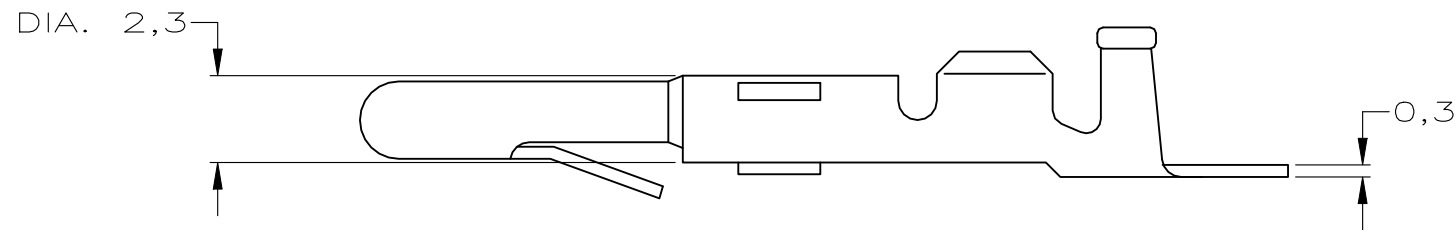
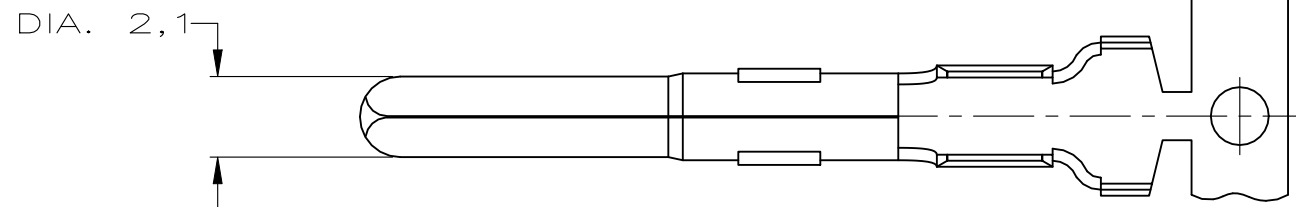
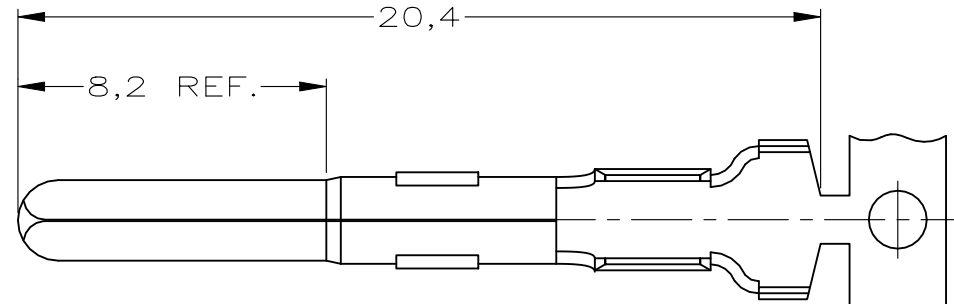
DO NOT SCALE
DIMENSIONS IN mm

METRIC




NOTES:

- △1 FOR USE ON STANDARD APPLICATORS (RIGHT- LEFT FEED).
- △2 FOR USE ON MINIATURE APPLICATORS (LEFT- RIGHT FEED)
- △3 OBSOLETE



WIRE RANGE :
0,3-0,75mm
INSULATION RANGE :
1,4-2,4 DIA.

NOTES	PLATING	MATERIAL	PARTNUMBER
△2	PRE-TINPLATED	PHOSPHOR BR.	163555-8
△2	UNPLATED	PHOSPHOR BR.	163555-7
△2	PRE-TINPLATED	BRASS	163555-6
△2	UNPLATED	BRASS	163555-5
△1	PRE-TINPLATED	PHOSPHOR BR.	163555-4
△1	UNPLATED	PHOSPHOR BR.	163555-3
△1	PRE-TINPLATED	BRASS	163555-2
△1	UNPLATED	BRASS	163555-1

CUSTOMER DRAWING					FOR REFERENCE ONLY WILL NOT BE UPDATED		
© COPYRIGHT 19 - BY AMP HOLLAND B.V.					ALL INTERNATIONAL RIGHTS RESERVED. AMP PRODUCTS MAY BE COVERED BY U.S. AND FOREIGN AND/OR PATENTS PENDING.		
THIS DRAWING IS UNPUBLISHED					RELEASED FOR PUBLICATION		
B2	ECR-23-195825	WLS	VS	03FEB2023	 AMP HOLLAND B.V. 's-Hertogenbosch, The Netherlands.		
B1	ECR-21-101087	PJ	VS	11MAY2021			
B	EH-1221-96	JvL	AB	24-10-96			
LTR.	REVISION RECORD		DR.	CHK.	DATE	PIN MATE-N-LOK.	
DR.:	J.v.LIEMPT	CHK.:	A.BIJNEN.	APP.:	M.v.DRIEL	DWG.No.	C-163555
DATE:	24 OCT 96	DATE:	-	DATE:	-	REV.LTR.	B2
						SHEET	1 OF 1
						A3	