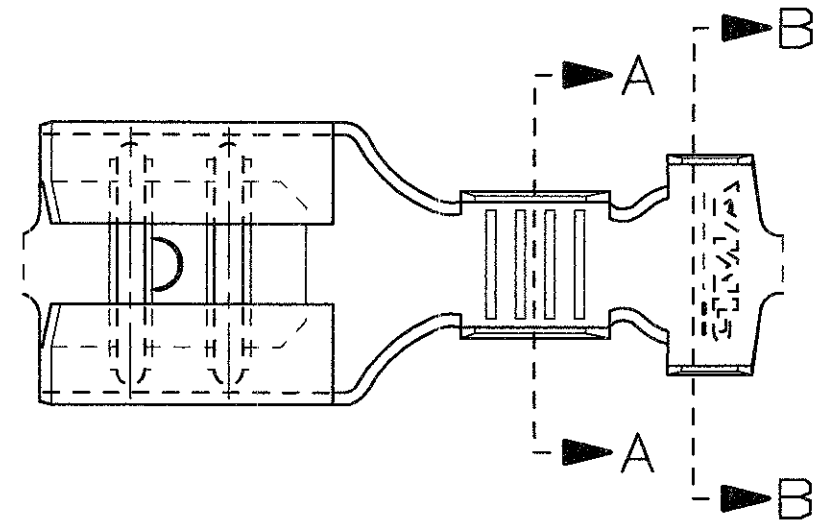
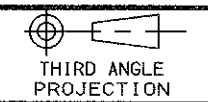
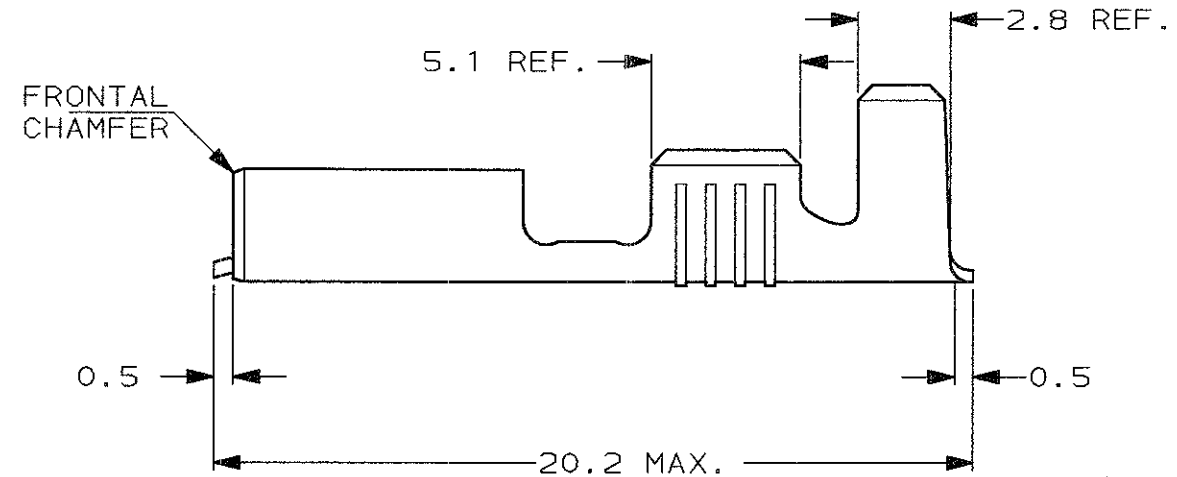
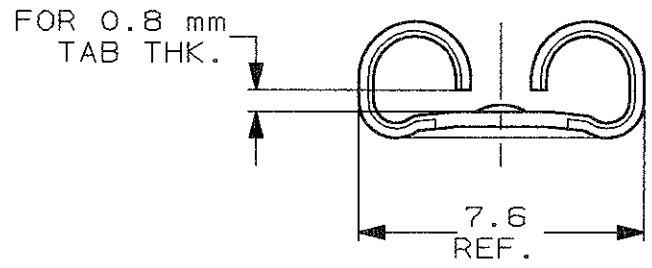


SCALA NON IMPEGNATIVA  
(DO NOT SCALE)  
DIMENSIONI IN mm  
(DIMENSIONS IN mm)

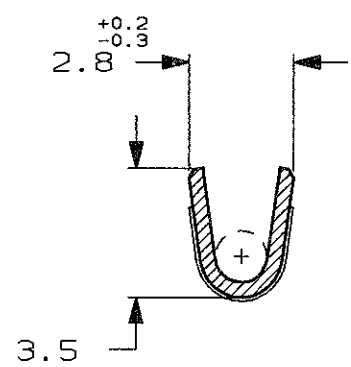
**METRIC**



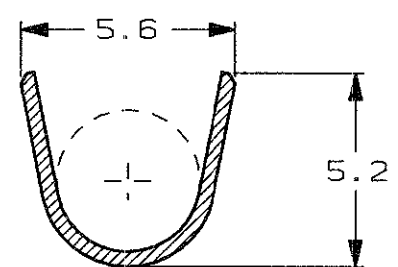
- 1) PER LE VERSIONI IN NASTRO  
VEDERE DISEGNO 160465  
(FOR STRIP FORM VERSION  
SEE DRAWING 160465).
- 2) CONFEZIONATO IN ACCORDO  
ALLA SPECIFICA AMP 107-20201.  
(PACKAGED ACCORDING TO AMP SPEC. 107-20201).



**SEZIONE A-A**  
(SECTION A-A)



**SEZIONE B-B**  
SECTION B-B



STAGNATO (TIN PLATED)	OTTONE (BRASS)	5-160563-2	D
NUDO (UNPLATED)	OTTONE (BRASS)	5-160563-1	D
FINITURA / COLORE (FINISH / COLOUR)	MATERIALE (MATERIAL)	NUMERO (PART NUMBER)	

**CUSTOMER DWG.**  
FOR REFERENCE ONLY

**DISEGNO PER CLIENTE**  
SOLO PER RIFERIMENTO

THIS DRAWING IS UNPUBLISHED RELEASE FOR PUBLICATION 19

© COPYRIGHT 19 BY AMP INCORPORATED, HARRISBURG, PA. ALL INTERNATIONAL RIGHT RESERVED. AMP PRODUCTS MAY BE COVERED BY U.S. AND FOREIGN PATENT AND/OR PATENT PENDING

TOLLERANZE: SE NON DIVERSAMENTE SPECIFICATO (TOLERANCES, UNLESS OTHERWISE SPECIFIED)	DIAM. ISOLANTE (INS. DIA. RANGE)	RANGO FILO (WIRE RANGE)	SCALA (SCALE)
± 0.3	3.0-4.3	0.75-1.50	5:1

ANGOLI  
(ANGLES) ± 2°

**AMP** AMP ITALIA S.p.A.  
Corso F.lli Cervi, 15  
COLLEGNO (TORINO)

DIS. H. YAALI  
(DR.) 08 JUN 2001

DESCRIZIONE  
(DESCRIPTION) FASTON® Connector,  
.250" sr. REC. CONTACT  
(LOOSE PIECE VERSION)

CONT. C. TARTARI (CHK) 08 JUN 2001	LOC. SIZE NUMERO (DWG NO)	REV.	FUOGGIO (SHEET)
	I A3 C-160563	D 1	D1 (COF) 1

REV. D	OBSOLETE PARTS & REDRAWN ET00-0161-01	DIS. DATA (COR) (DATE)	H. Y 04 JUL 2001
	REVISIONI (REVISION RECORD)		APP. (CAPP.)

DISTRIBUZIONE  
(PRINT DIST.)