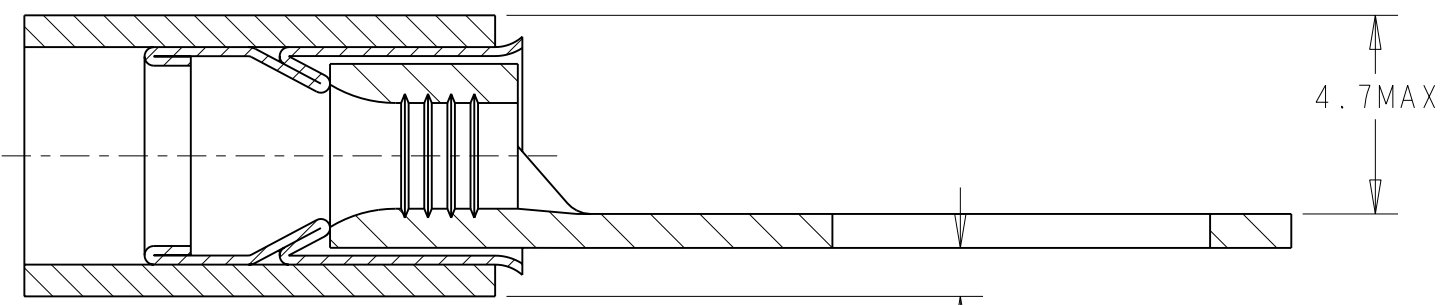


THIS DRAWING IS UNPUBLISHED. RELEASED FOR PUBLICATION 20
 © COPYRIGHT 20 BY TYCO ELECTRONICS CORPORATION. ALL RIGHTS RESERVED.

LOC	DIST	REVISIONS				
P	LTR	DESCRIPTION	DATE	DWN	APVD	
F	00	B	HOLE DIA. TOLERANCES	09JUN2006	JJD	YP
		C	ECR 07-025006	29OCT2007	JT	GR

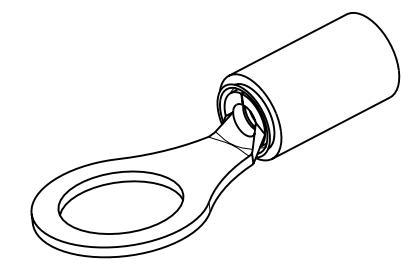
COUPE C-C



STAMP : AMP 14-12

BODY 0.80±0.03 TONGUE THICKNESS

Ø8.34±0.13 FOR 5/16 STUD



SCALE 2:1

FOR INSULATION Ø2.30 - 3.18

Ø6.05 MAX SLEEVE

SERRATIONS INSULATION

SLEEVE

C

C

11.91±0.15

0.79 MIN

10.90 MIN

22.53 MAX

28.56 MAX

WIRE TERMINAL	1577642-1	BODY : COPPER ANNEALED FINISH : NICKEL PLATED
		SLEEVE : COPPER ANNEALED FINISH : NICKEL PLATED
		INSULATION : PEEK COLOR : BEIGE
DESCRIPTION	PART NUMBER	MATERIAL & FINISH

THIS DRAWING IS A CONTROLLED DOCUMENT FOR TYCO ELECTRONICS CORPORATION
 IT IS SUBJECT TO CHANGE AND THE CONTROLLING ENGINEERING ORGANIZATION
 SHOULD BE CONTACTED FOR THE LATEST REVISION.

DIMENSIONS: mm	TOLERANCES UNLESS OTHERWISE SPECIFIED:
	0 PLC ±- 1 PLC ±0.3 2 PLC ±- 3 PLC ±- 4 PLC ±- ANGLES ±5
MATERIAL SEE TABLE	FINISH SEE TABLE

DWN JJ. DESPRETZ 22FEB2006	Tyco Electronics France SAS 95300 Pontoise, France
CHK G. ROBERT 22FEB2006	
APVD Y. PETRONIN 22FEB2006	
NAME	
PRODUCT SPEC 108-15356	TERMINAL, PEEK PIDG STRATO, 14-12 AWG
APPLICATION SPEC 114-15102	SIZE CAGE CODE DRAWING NO RESTRICTED TO
WEIGHT 1,4 gr	A300779 C=1577642
CUSTOMER DRAWING	SCALE 6:1 SHEET 1 OF 1 REV C