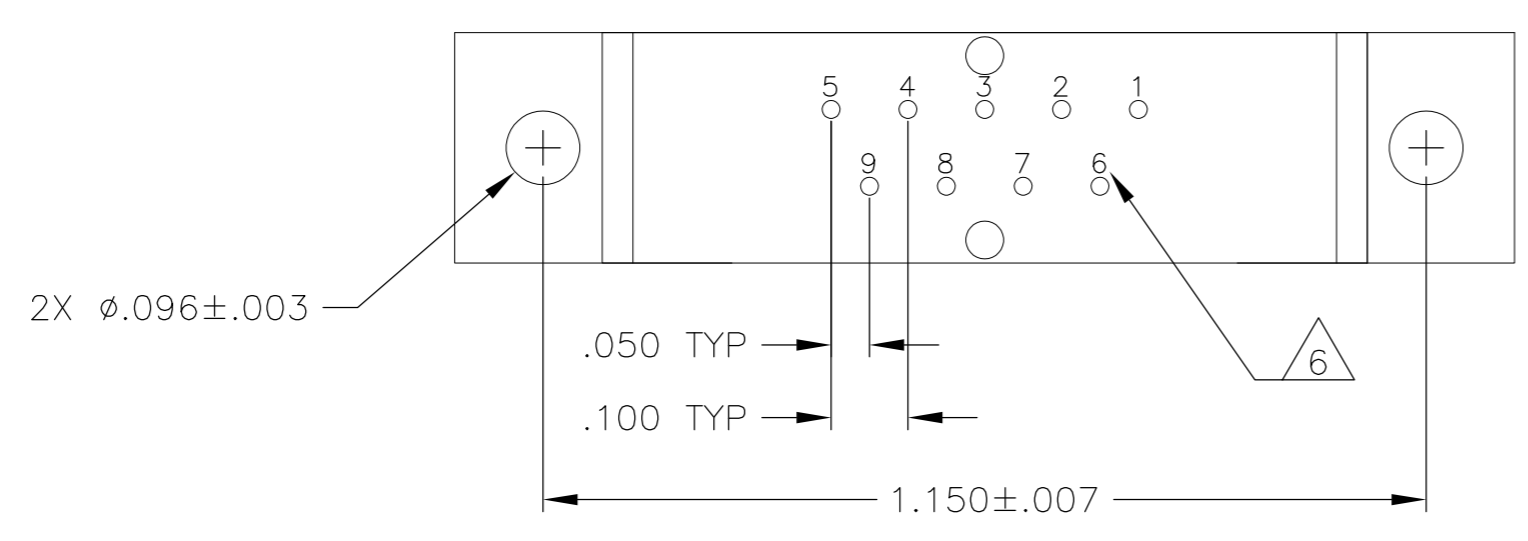
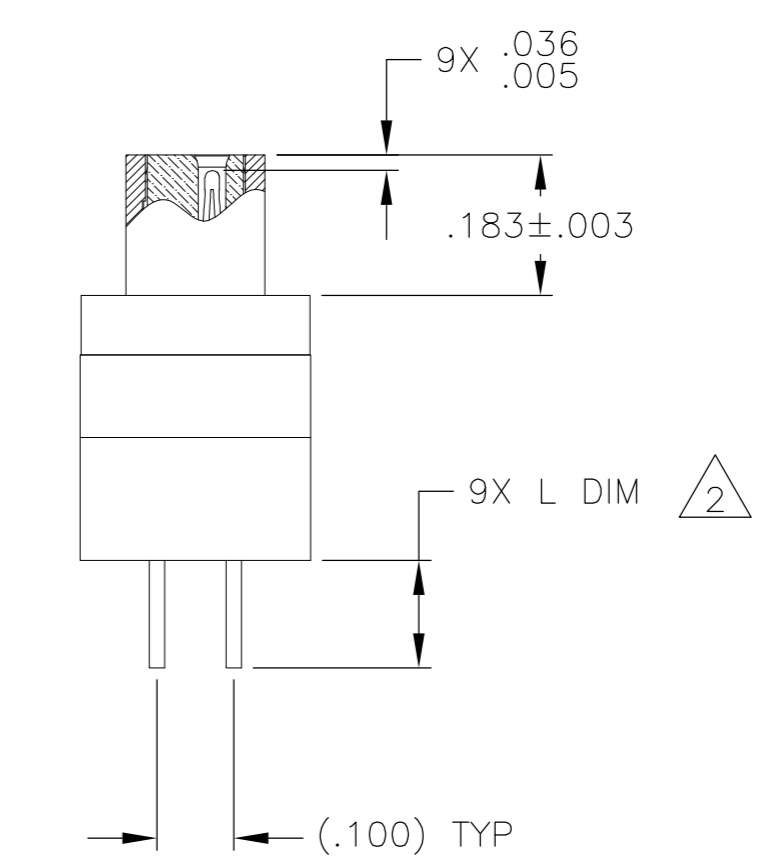
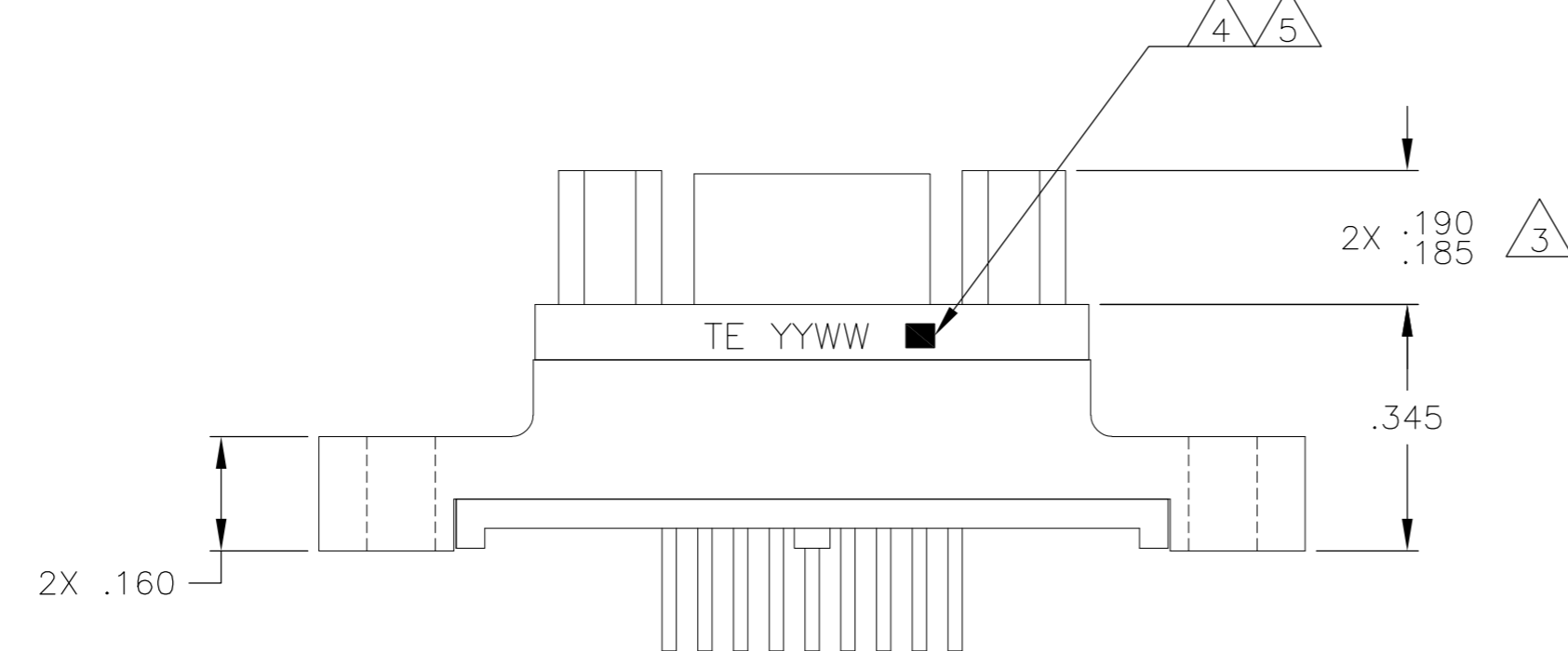
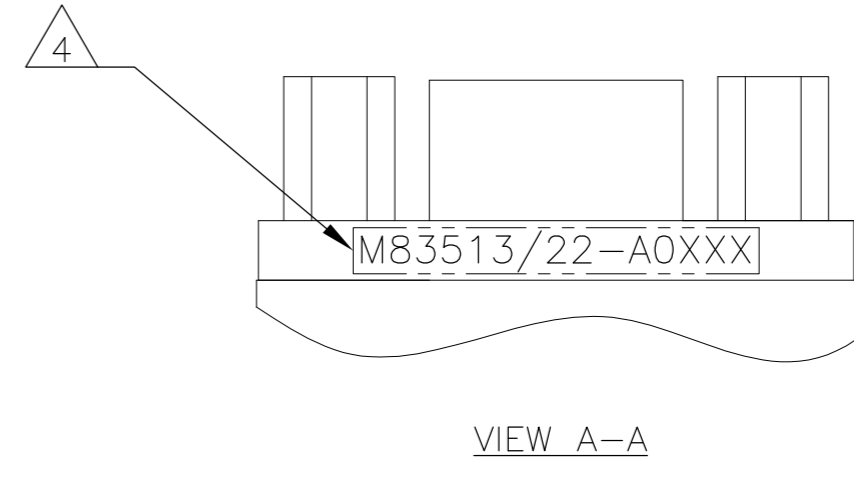
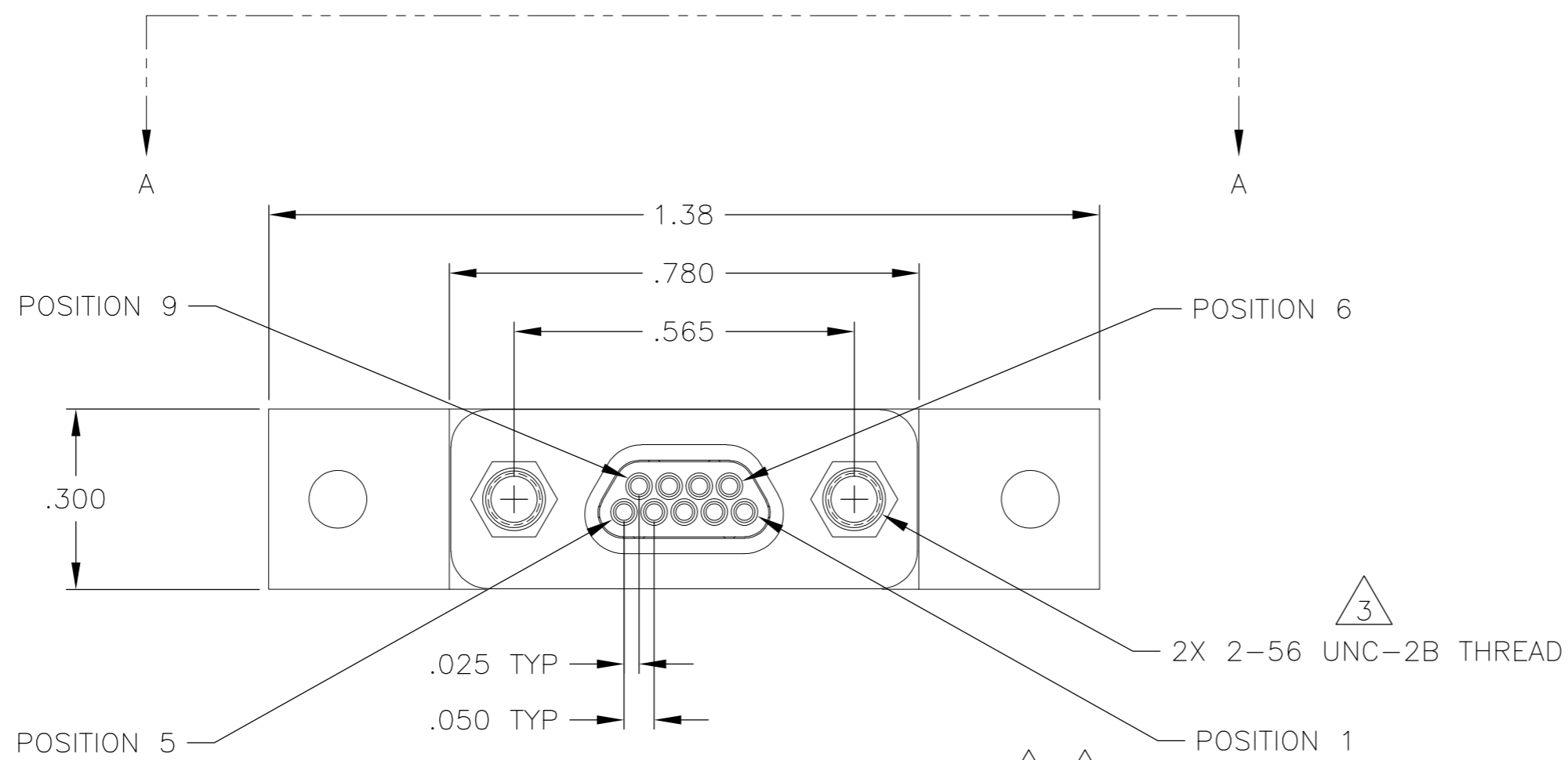


THIS DRAWING IS UNPUBLISHED. RELEASED FOR PUBLICATION  
 © COPYRIGHT - By - ALL RIGHTS RESERVED.

LOC		DIST		REVISIONS			
P	LTR	DESCRIPTION		DATE	DWN	APVD	
-	-	A	INITIAL RELEASE	2 JUL 12	CAS	MKS	



JACKPOSTS OMITTED FOR CLARITY

SEE SHEET 2 FOR NOTES

THIS DRAWING IS A CONTROLLED DOCUMENT.		DWN C SCHOLL 2 JUL 12		
DIMENSIONS: INCHES		CHK -		
TOLERANCES UNLESS OTHERWISE SPECIFIED:		APVD M STORRY 2 JUL 12	NAME	
0 PLC ± -		PRODUCT SPEC	PLUG ASSEMBLY, MCKS, ST1 STRAIGHT TERMINATION, PCB MOUNT, 2 ROW, SIZE 9, PER MIL-DTL-83513/22	
1 PLC ± -		APPLICATION SPEC	SIZE	RESTRICTED TO
2 PLC ± .010			A2	-
3 PLC ± .005		WEIGHT	CAGE CODE	DRAWING NO
4 PLC ± -		-	98278	1532266
ANGLES ± 1°		CUSTOMER DRAWING	SCALE	SHEET
FINISH			4:1	1 of 2
SEE NOTES				REV
				A

THIS DRAWING IS UNPUBLISHED. RELEASED FOR PUBLICATION  
 © COPYRIGHT - By - ALL RIGHTS RESERVED.

LOC		DIST		REVISIONS			
P	LTR	DESCRIPTION	DATE	DWN	APVD		
-	-	SEE SHEET 1	-	-	-		

TE PART NUMBER	MIL-DTL-83513 PIN	MCKS DESCRIPTION	SHELL FINISH $\triangle 1$	HARDWARE $\triangle 3$	L DIM $\pm .015$
1532266-1	M83513/22-A01CN	MCKS-C2-B-9PST1	CADMIUM	NONE	.109
1532266-2	M83513/22-A01CP	MCKS-C2-P-9PST1	CADMIUM	JACKPOSTS	.109
1532266-3	M83513/22-A01NN	MCKS-N1-B-9PST1	NICKEL	NONE	.109
1532266-4	M83513/22-A01NP	MCKS-N1-P-9PST1	NICKEL	JACKPOSTS	.109
1532266-5	M83513/22-A02CN	MCKS-C2-B-9PST1A	CADMIUM	NONE	.140
1532266-6	M83513/22-A02CP	MCKS-C2-P-9PST1A	CADMIUM	JACKPOSTS	.140
1532266-7	M83513/22-A02NN	MCKS-N1-B-9PST1A	NICKEL	NONE	.140
1532266-8	M83513/22-A02NP	MCKS-N1-P-9PST1A	NICKEL	JACKPOSTS	.140
1532266-9	M83513/22-A03CN	MCKS-C2-B-9PST1B	CADMIUM	NONE	.172
1-1532266-0	M83513/22-A03CP	MCKS-C2-P-9PST1B	CADMIUM	JACKPOSTS	.172
1-1532266-1	M83513/22-A03NN	MCKS-N1-B-9PST1B	NICKEL	NONE	.172
1-1532266-2	M83513/22-A03NP	MCKS-N1-P-9PST1B	NICKEL	JACKPOSTS	.172

- $\triangle 1$  SHELL MATERIAL: 6061-T6 ALUMINUM  
 FINISH OPTIONS:  
 ELECTROLESS NICKEL PLATED PER SAE-AMS-C-26074 OR SAE AMS 2404 OR CADMIUM PLATED PER SAE-AMS-QQ-P-416 WITH YELLOW CHROMATE  
 INSULATOR: LIQUID CRYSTAL POLYMER (LCP)  
 HARDWARE: 300 SERIES STAINLESS STEEL  
 TB BOX: POLYPHENYLENE SULFIDE (PPS) AND EPOXY POTTING
- $\triangle 2$  TERMINATION: 24AWG GOLD PLATED COPPER WIRE, Sn63Pb37 SOLDER DIPPED UP TO MOUNTING SURFACE AT A MINIMUM
- $\triangle 3$  JACKPOST HARDWARE SHALL BE PERMANENTLY INSTALLED AS SHOWN WHEN REQUIRED BY THE MIL PIN. JACKPOST DIMENSIONS AND REQUIREMENTS ARE DEFINED IN MIL-DTL-83513/5.
- $\triangle 4$  CONNECTOR SHALL BE MARKED IN ACCORDANCE WITH METHOD I OF MIL-STD-1285. MARKING SHALL CONTAIN THE MILITARY PIN, CAGE CODE (OR TE), AND DATE CODE. EXAMPLE: M83513/22-A0XXX TE YYWW (WHERE XXX IS PART OF THE PIN SHOWN IN THE "MIL-DTL-83513 PIN" COLUMN OF THE PART NUMBER TABLE, AND YYWW IS THE DATE CODE). FOR THE SIZE 9 PLUG, THE MARKING MUST BE PRINTED ON BOTH SIDES OF THE FLANGE. TEXT HEIGHT SHALL BE .035 INCH MINIMUM.
- $\triangle 5$  POSITION 1 SHALL BE INDICATED BY AN IDENTIFIABLE MARK, LOCATED APPROXIMATELY AS SHOWN ON THE POSITION 1 SIDE OF THE CONNECTOR FLANGE. THIS MARK SHALL BE INCLUDED AS PART OF THE PART MARKING INFORMATION.
- $\triangle 6$  TERMINAL IDENTIFICATION NUMBERS AS SHOWN DO NOT ACTUALLY APPEAR ON THE PART (FOR IDENTIFICATION ONLY)
- 7 ALL REQUIREMENTS CONFORM TO MIL-DTL-83513/22. SEE MIL-SPEC FOR DETAILED INTERFACE DIMENSIONS AND SUGGESTED PCB LAYOUTS

THIS DRAWING IS A CONTROLLED DOCUMENT.		DWN C SCHOLL 2 JUL 12	TE Connectivity																		
DIMENSIONS: INCHES		CHK -	NAME M STORRY 2 JUL 12																		
TOLERANCES UNLESS OTHERWISE SPECIFIED:		APVD M STORRY 2 JUL 12	PRODUCT SPEC -																		
<table border="0"> <tr><td>0 PLC</td><td><math>\pm</math></td><td>-</td></tr> <tr><td>1 PLC</td><td><math>\pm</math></td><td>-</td></tr> <tr><td>2 PLC</td><td><math>\pm</math></td><td>.010</td></tr> <tr><td>3 PLC</td><td><math>\pm</math></td><td>.005</td></tr> <tr><td>4 PLC</td><td><math>\pm</math></td><td>-</td></tr> <tr><td>ANGLES</td><td><math>\pm</math></td><td>1°</td></tr> </table>		0 PLC	$\pm$	-	1 PLC	$\pm$	-	2 PLC	$\pm$	.010	3 PLC	$\pm$	.005	4 PLC	$\pm$	-	ANGLES	$\pm$	1°	APPLICATION SPEC -	
0 PLC	$\pm$	-																			
1 PLC	$\pm$	-																			
2 PLC	$\pm$	.010																			
3 PLC	$\pm$	.005																			
4 PLC	$\pm$	-																			
ANGLES	$\pm$	1°																			
MATERIAL SEE NOTES	FINISH SEE NOTES	WEIGHT -	SIZE A2	CAGE CODE 98278																	
CUSTOMER DRAWING		DRAWING NO C=1532266	RESTRICTED TO -	SCALE 4:1																	
		SHEET 2 of 2	REV A																		