

4

3

2

1

THIS DRAWING IS UNPUBLISHED.

RELEASED FOR PUBLICATION

© COPYRIGHT

ALL RIGHTS RESERVED.

LOC DIST

REVISIONS

P	LTR	DESCRIPTION	DATE	DWN	APVD

REPLACED BY OCEAN STYLE APPLICATOR PART NUMBER

FOR REPLACEMENT PARTS FOR APPLICATOR REFER TO ADDITIONAL PAGE(S). SPARE PARTS KIT (IF LISTED) WILL REMAIN AVAILABLE.

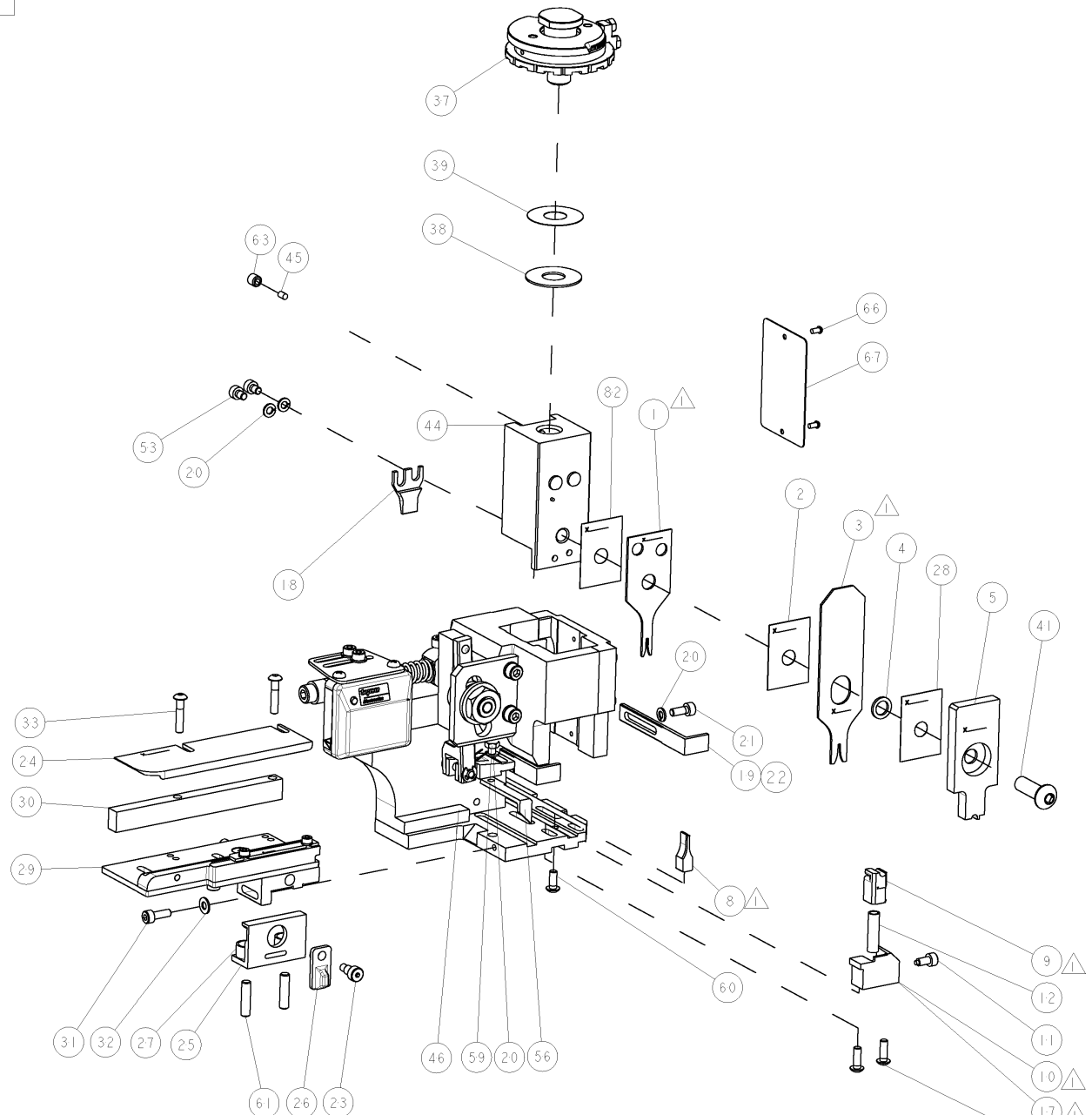
THE REPLACEMENT OCEAN STYLE APPLICATOR HAS THE SAME TERMINATOR/PRESS INTERFACE AS APPLICATOR

THIS DRAWING IS A CONTROLLED DOCUMENT.		DWN	 TE Connectivity		
DIMENSIONS:		CHK			
TOLERANCES UNLESS OTHERWISE SPECIFIED:		APVD	NAME		
 0 PLC ± 1 PLC ± 2 PLC ± 3 PLC ± 4 PLC ± ANGLES ±		PRODUCT SPEC	RESTRICTED TO		
		APPLICATION SPEC	SIZE	CAGE CODE	DRAWING NO
MATERIAL	FINISH	WEIGHT	A3	C-	
		SCALE	SHEET	OF	REV

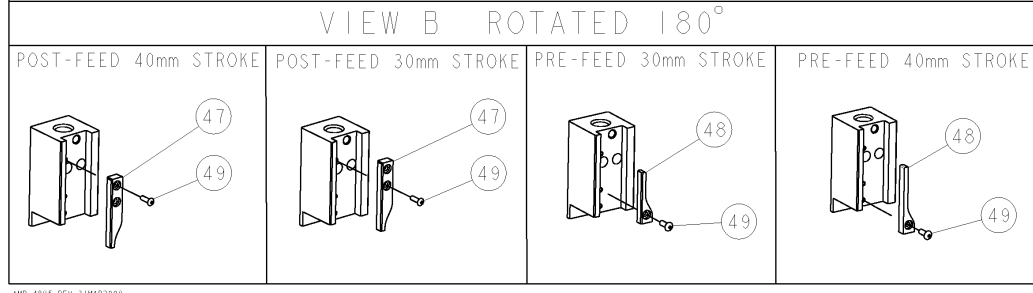
PART NUMBER	REV	TERMINATOR	FEED TYPE	DESCRIPTION
1528593-1	B	LEADMAKER	MECH POST FEED	CUTS CARRIER
1528593-2	B	BENCH	MECH PRE FEED	CUTS CARRIER
1528593-6	B	LEADMAKER	MECH POST FEED	CONTINUOUS CARRIER
7-1528593-1	B	LEADMAKER	MECH POST FEED	-1 AND SPARE PARTS
7-1528593-2	B	BENCH	MECH PRE FEED	-2 AND SPARE PARTS
7-1528593-6	B	LEADMAKER	MECH POST FEED	-6 AND SPARE PARTS
7-1528593-7	A	-	-	SPARE PARTS KIT

CRIMP DATA		JST TERMINAL	JST CRIMP SPEC
TERMINAL NAME: PH CONNECTOR			
CRIMP	SIZE	TYPE	RANGE
WIRE	1.07 [.042 IN]	F	30-24 AWG Δ 5
INSUL	1.50 [.059 IN]	F	0.90-1.50 [.035-.059 IN]
WIRE STRIP LENGTH 2.10-2.90 [.083-.114 IN]		APPL INSTRUCTIONS 408-8322 & 408-8490 Δ	
TERMINAL APPL SPEC		JST SPEC SHEET Δ	FEED 7.00 [.276 IN]
TERMINALS APPLIED			
TYCO PN	MANUF'S PN	-	-
1832010-1	SPH-002T-PO.5S	-	-
1949141-1	SPH-002T-PO.5	-	-
-	-	-	-
-	-	-	-
WIRE SIZE	CRIMP HEIGHT *	REF SETTING *	
24 AWG	0.645 \pm 0.025 [.0254 \pm .001 IN]	C0	
26 AWG	0.595 \pm 0.025 [.0234 \pm .001 IN]	C3	
28 AWG	0.575 \pm 0.025 [.0225 \pm .001 IN]	C6	
30 AWG	0.545 \pm 0.025 [.0215 \pm .001 IN]	C8	

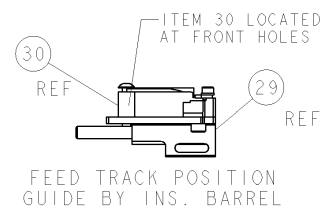
- Δ RECOMMENDED SPARE PARTS.
- 2. GREASE RAM, CAM, CAM FOLLOWER AND FEED ROD LIGHTLY.
- 3. LUBRICATE DAILY PER THE APPLICATOR INSTRUCTION SHEET SUPPLIED WITH THE APPLICATOR.
- Δ CRIMP HEIGHT DATA PER JST CRIMP SPEC SHEET. CRIMP WIDTH CALCULATED BY TYCO ELECTRONICS.
- Δ WIRE RANGE SHOWN IS WIRE RANGE OF TERMINAL. 30 AWG WIRE SIZE IS NOT RECOMMENDED FOR USE BY TYCO ELECTRONICS.



*** WARNING**
ON INSTALLATION, SET WIRE DISC TO LARGEST WIRE SIZE SETTING. USE OF SETTINGS BELOW MIN. REQUIRED CRIMP HEIGHT SETTING WILL CAUSE DAMAGE TO CRIMP TOOLING.



PART NO	DESCRIPTION	ITEM NO							
-77	-76	-72	-71	-6	-2	-1	PART NO	DESCRIPTION	ITEM NO
-	-	-	-	-	-	-	-	-	84
-	-	-	-	-	-	-	-	-	83
-	-	-	-	-	-	-	455888-1	SPACER, CRIMPER	82
-	-	-	-	-	-	-	-	-	81
-	-	-	-	-	-	-	-	-	80
-	-	-	-	-	-	-	-	-	79
-	-	-	-	-	-	-	-	-	78
-	-	-	-	-	-	-	-	-	77
-	-	-	-	-	-	-	-	-	76
-	-	-	-	-	-	-	-	-	75
-	-	-	-	-	-	-	-	-	74



SET UP GAGE
458637-3

REV	DESCRIPTION	DATE	BY	APPV
A	SEE ECO-05-015898	12DEC2005	MC	MC
B	SEE ECR-06-023002	02OCT2006	MC	MC

-	-	-	-	-	-	-	-	-	-	73
-	-	-	-	-	-	-	-	-	-	72
-	-	-	-	-	-	-	-	-	-	71
-	-	-	-	-	-	-	-	-	-	70
-	-	-	-	-	-	-	-	-	-	69
-	-	-	-	-	-	-	-	-	-	68
-	-	-	-	-	-	-	-	-	-	67
-	-	-	-	-	-	-	-	-	-	66
-	-	-	-	-	-	-	-	-	-	65
-	-	-	-	-	-	-	-	-	-	64
-	-	-	-	-	-	-	-	-	-	63
-	-	-	-	-	-	-	-	-	-	62
-	-	-	-	-	-	-	-	-	-	61
-	-	-	-	-	-	-	-	-	-	60
-	-	-	-	-	-	-	-	-	-	59
-	-	-	-	-	-	-	-	-	-	58
-	-	-	-	-	-	-	-	-	-	57
-	-	-	-	-	-	-	-	-	-	56
-	-	-	-	-	-	-	-	-	-	55
-	-	-	-	-	-	-	-	-	-	54
-	-	-	-	-	-	-	-	-	-	53
-	-	-	-	-	-	-	-	-	-	52
-	-	-	-	-	-	-	-	-	-	51
-	-	-	-	-	-	-	-	-	-	50
-	-	-	-	-	-	-	-	-	-	49
-	-	-	-	-	-	-	-	-	-	48
-	-	-	-	-	-	-	-	-	-	47
-	-	-	-	-	-	-	-	-	-	46
-	-	-	-	-	-	-	-	-	-	45
-	-	-	-	-	-	-	-	-	-	44
-	-	-	-	-	-	-	-	-	-	43
-	-	-	-	-	-	-	-	-	-	42
-	-	-	-	-	-	-	-	-	-	41
-	-	-	-	-	-	-	-	-	-	40
-	-	-	-	-	-	-	-	-	-	39
-	-	-	-	-	-	-	-	-	-	38
-	-	-	-	-	-	-	-	-	-	37
-	-	-	-	-	-	-	-	-	-	36
-	-	-	-	-	-	-	-	-	-	35
-	-	-	-	-	-	-	-	-	-	34
-	-	-	-	-	-	-	-	-	-	33
-	-	-	-	-	-	-	-	-	-	32
-	-	-	-	-	-	-	-	-	-	31
-	-	-	-	-	-	-	-	-	-	30
-	-	-	-	-	-	-	-	-	-	29
-	-	-	-	-	-	-	-	-	-	28
-	-	-	-	-	-	-	-	-	-	27
-	-	-	-	-	-	-	-	-	-	26
-	-	-	-	-	-	-	-	-	-	25
-	-	-	-	-	-	-	-	-	-	24
-	-	-	-	-	-	-	-	-	-	23
-	-	-	-	-	-	-	-	-	-	22
-	-	-	-	-	-	-	-	-	-	21
-	-	-	-	-	-	-	-	-	-	20
-	-	-	-	-	-	-	-	-	-	19
-	-	-	-	-	-	-	-	-	-	18
-	-	-	-	-	-	-	-	-	-	17
-	-	-	-	-	-	-	-	-	-	16
-	-	-	-	-	-	-	-	-	-	15
-	-	-	-	-	-	-	-	-	-	14
-	-	-	-	-	-	-	-	-	-	13
-	-	-	-	-	-	-	-	-	-	12
-	-	-	-	-	-	-	-	-	-	11
-	-	-	-	-	-	-	-	-	-	10
-	-	-	-	-	-	-	-	-	-	9
-	-	-	-	-	-	-	-	-	-	8
-	-	-	-	-	-	-	-	-	-	7
-	-	-	-	-	-	-	-	-	-	6
-	-	-	-	-	-	-	-	-	-	5
-	-	-	-	-	-	-	-	-	-	4
-	-	-	-	-	-	-	-	-	-	3
-	-	-	-	-	-	-	-	-	-	2
-	-	-	-	-	-	-	-	-	-	1

DATE	BY	APPV	DESCRIPTION	ITEM NO
16NOV2005	D. PROUSE	M. CLIFFORD	tyco Tyco Electronics Harrisburg, PA 17105-3608	
16NOV2005	M. CLIFFORD		FINE ADJUST SIDE FEED HDI APPLICATOR	
			SIZE: 3.5	