

Table with columns: PART NUMBER, REV, FIRST USED. Rows include 1385303-1, 1385303-2 and 122500-4, 565435-5.

Table with columns: QTY, PART NO, DESCRIPTION, U/M, PART NO, DESCRIPTION, AIR FEED. Rows for LEADMAKER & BENCH MODEL G and BENCH MODEL K.

CRIMP DATA (AMP TERMINAL) table with columns: PAD LTR, CRIMP HEIGHT, WIRE SIZE, CRIMP, SIZE, TYPE, RANGE, WIRE, INSUL.

WIRE STRIP LENGTH, TERM APPL SPEC, FEED, AI 408-8095 & 8098, SET UP GAGE, LAYOUT table.

- RECOMMENDED SPARE PARTS.
ITEM NOT SHOWN. (SEE A.I.SHEET 8095)
CUTTING TOLERANCE ±.25
4. SPRING LOADED TONKER (P/N 354853-1) MUST BE USED WHEN RUNNING THE APPLICATOR ON A LEADMAKER.
USE SEALANT P/N 1-23419-5 AS SHOWN.

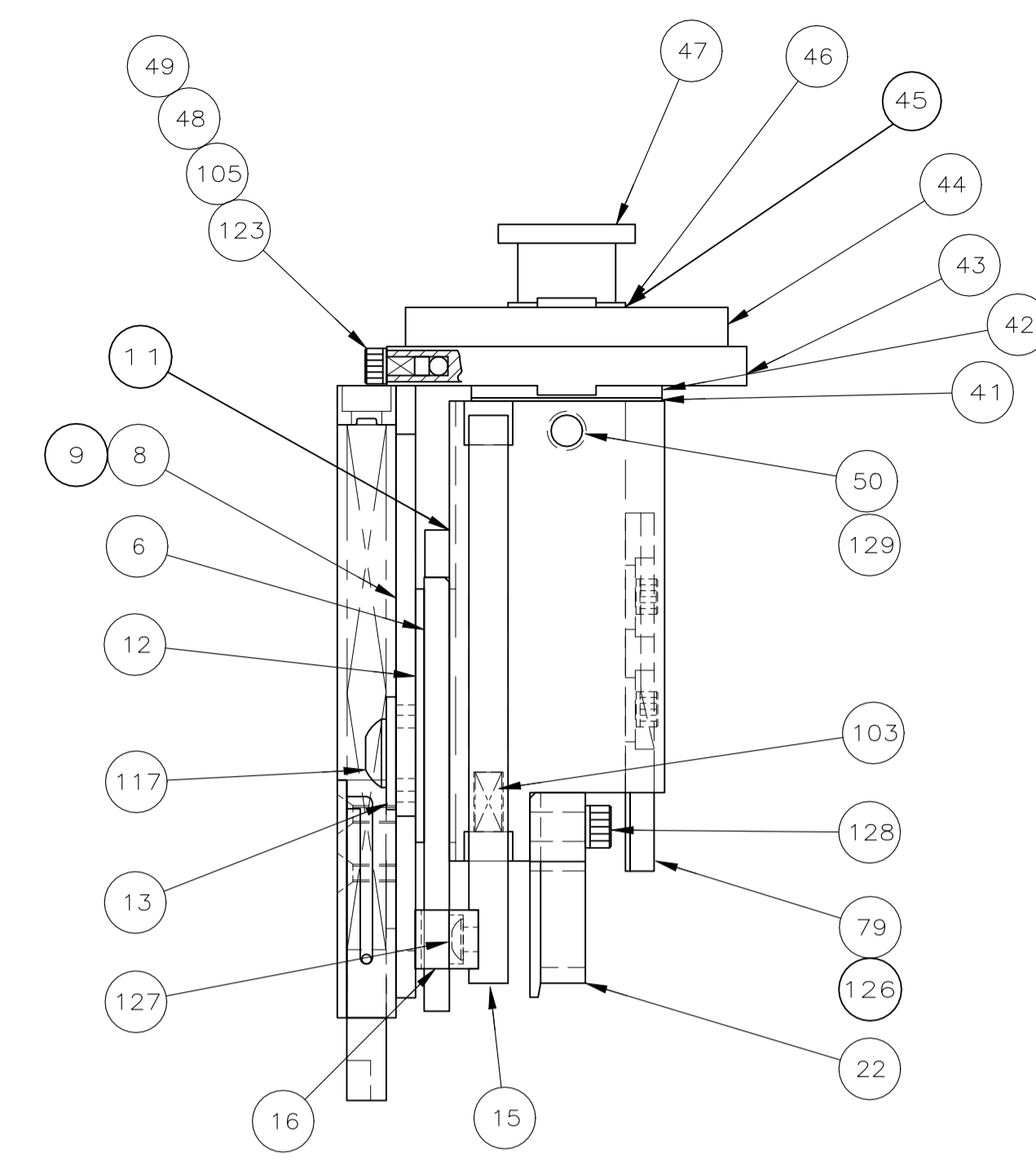
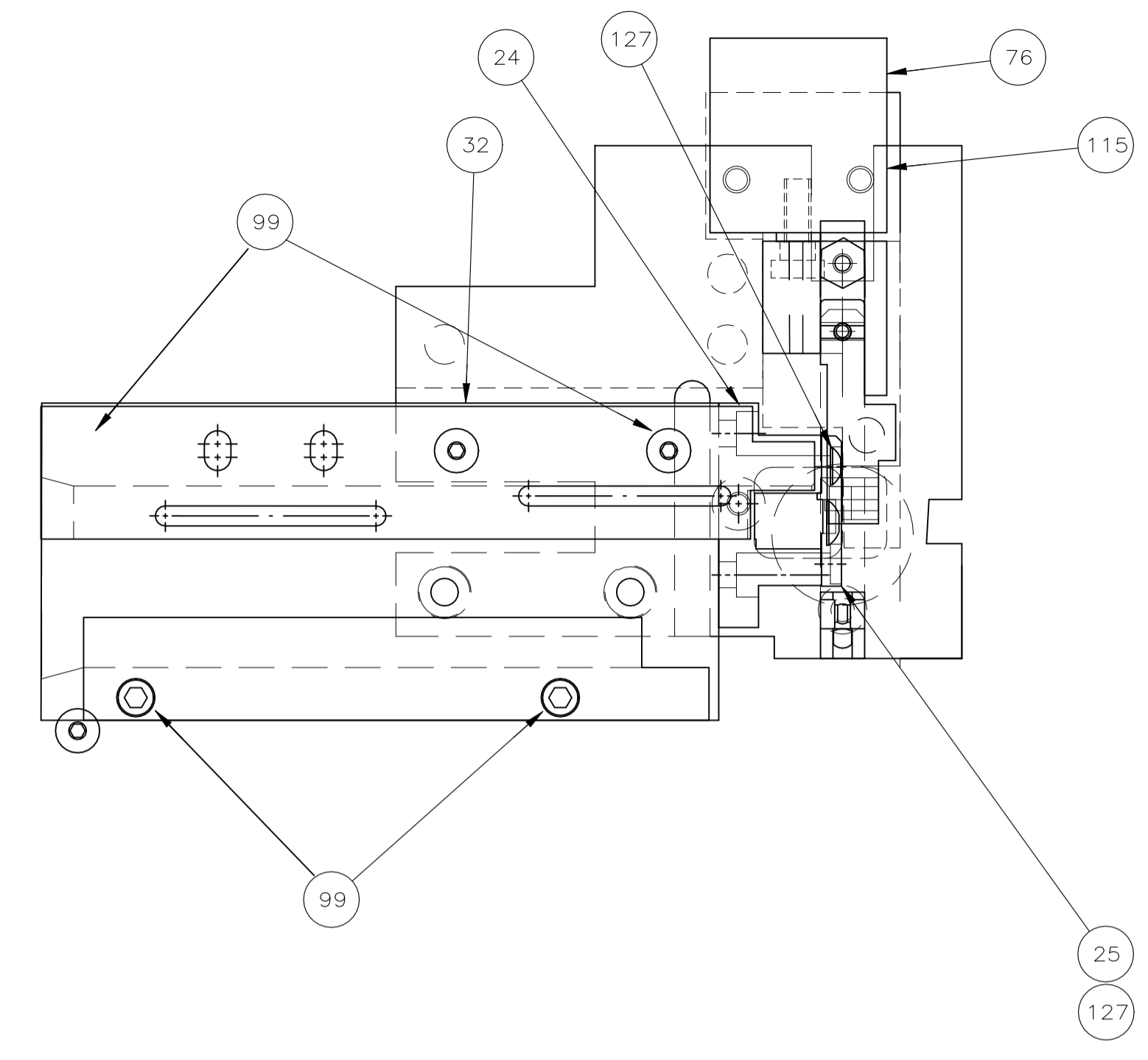
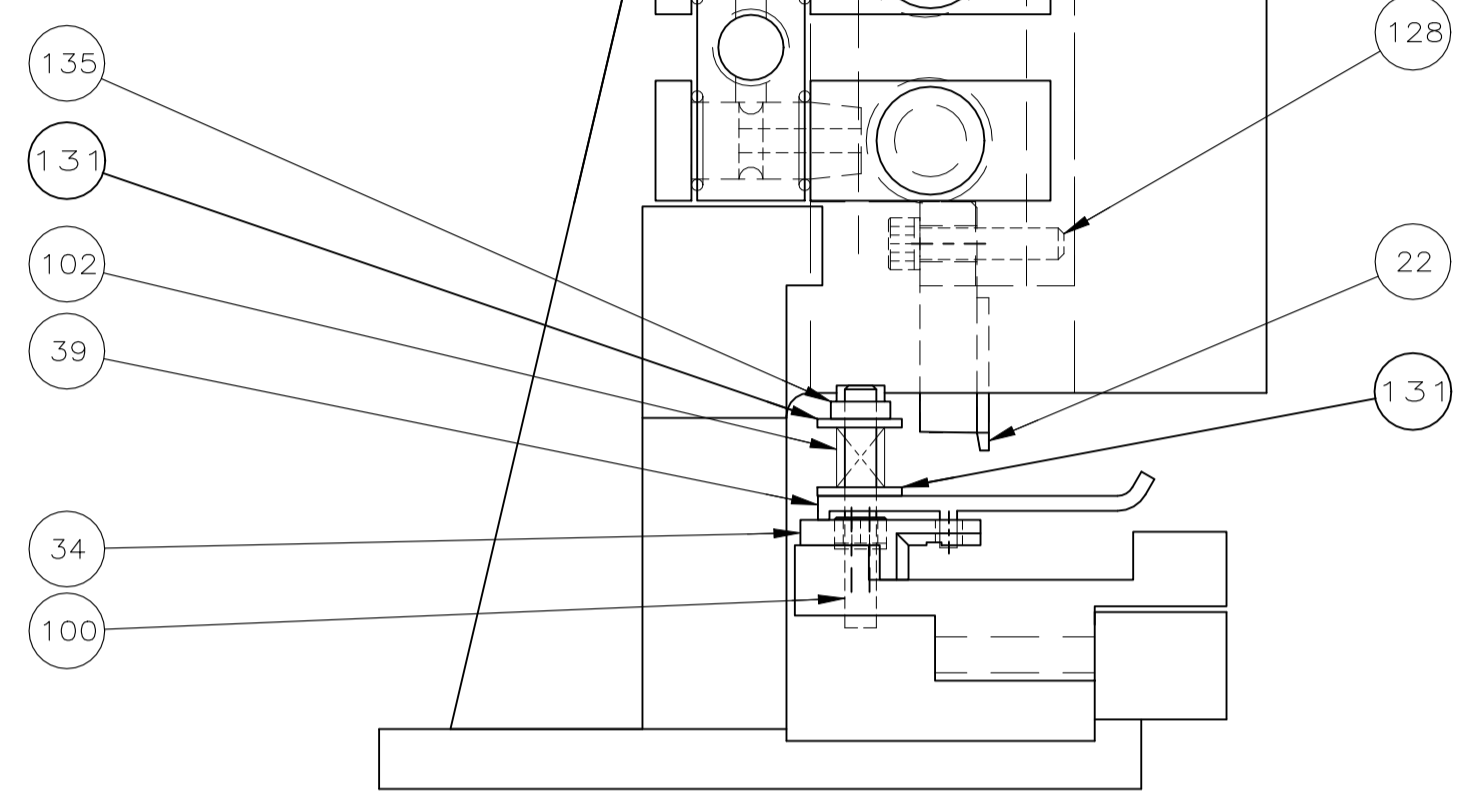
Main parts list table with columns: QTY REQD, PART NO, DESCRIPTION, ITEM NO. Includes parts like DEPRESSOR, WIRE; NUT, HEX; WASHER, LOCK; SPRING, COMPRESSION; etc.

Parts list table with columns: QTY REQD, PART NO, DESCRIPTION, ITEM NO. Includes parts like TUBING, NYLON; CONNECTOR, MALE; BUSHING, PIPE FITTING; etc.

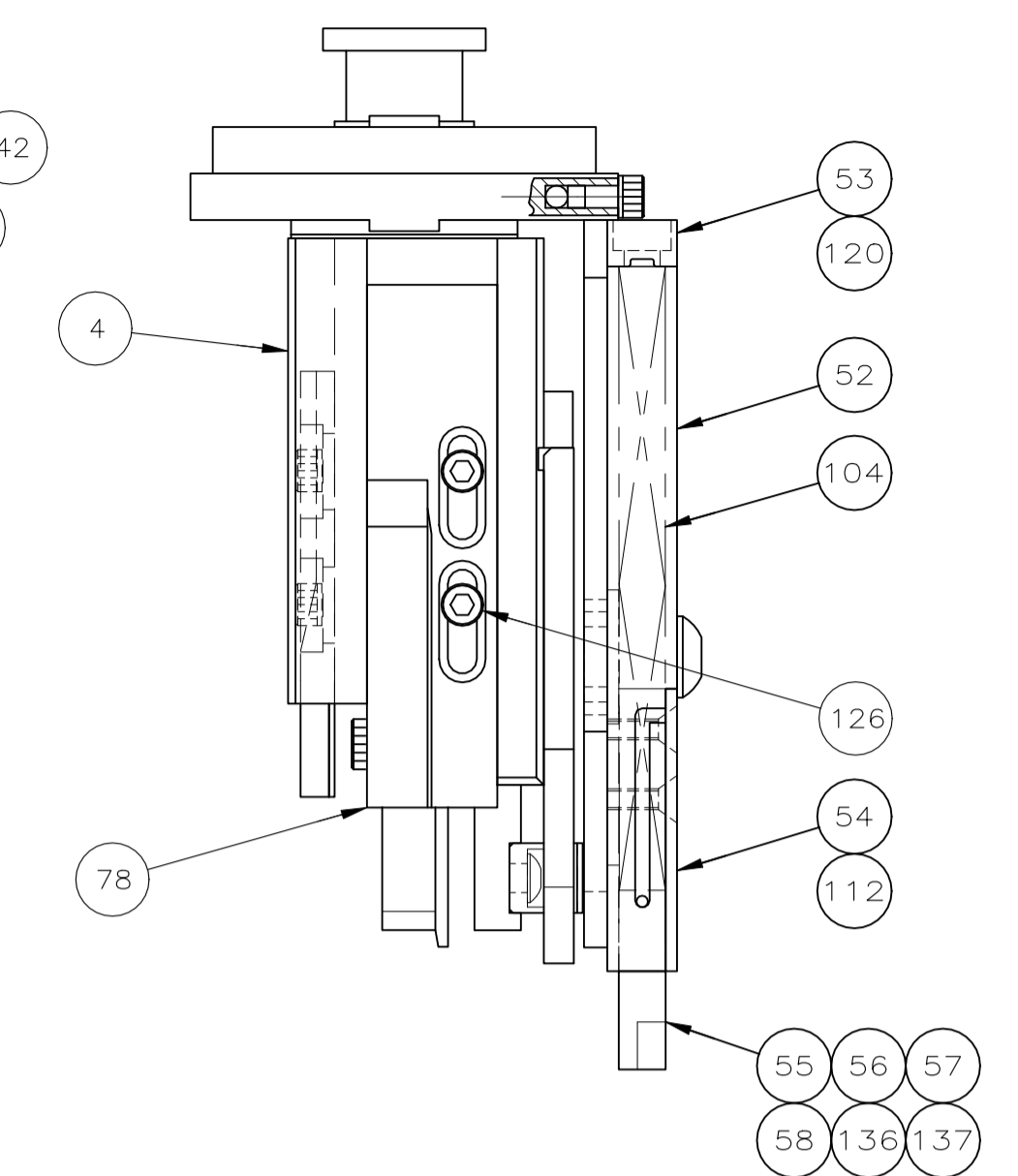
LOC A, DIST 66

Engineering drawing header block containing dimensions, tolerances, name, title, scale, sheet number, and revision information.

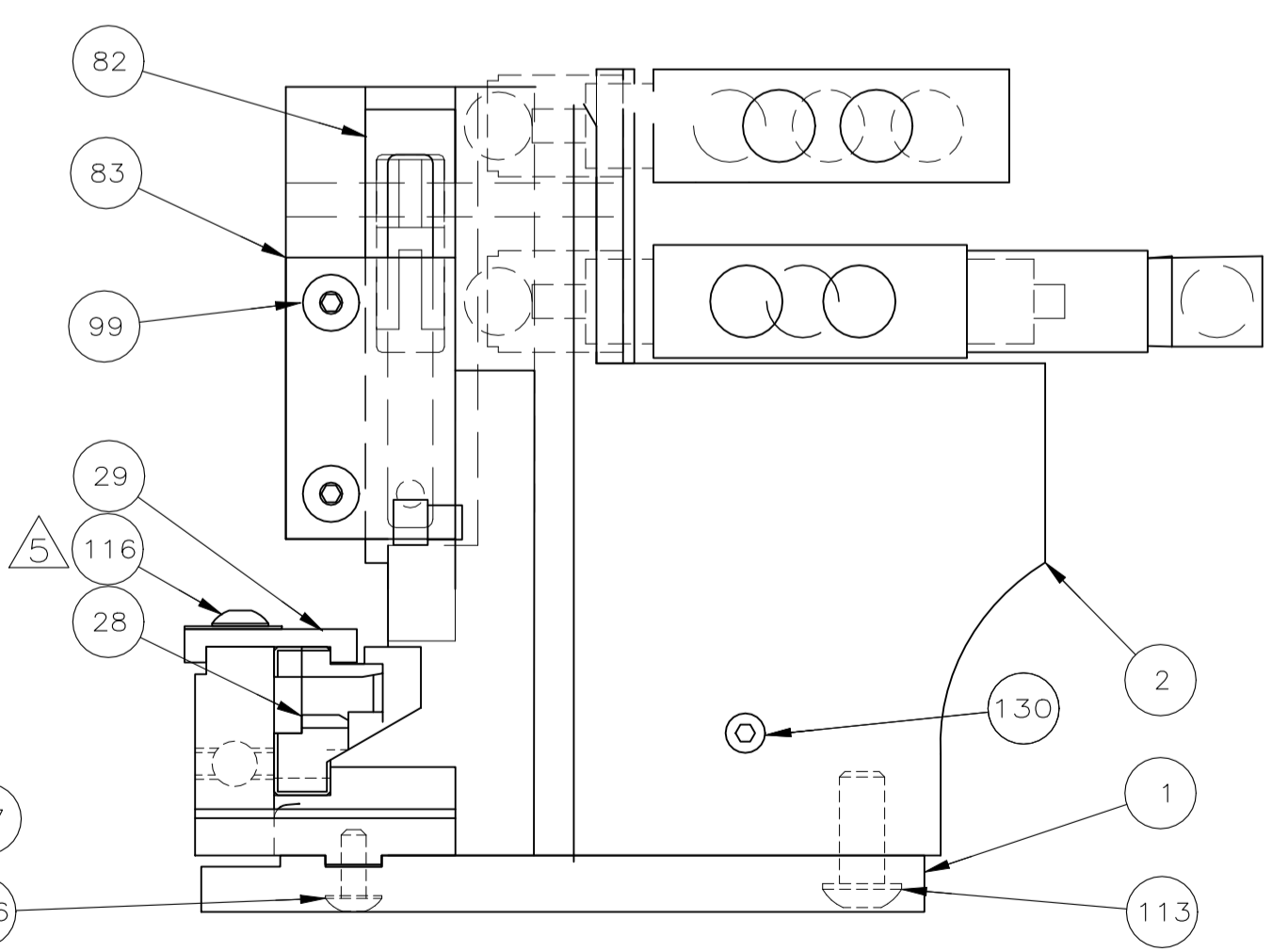
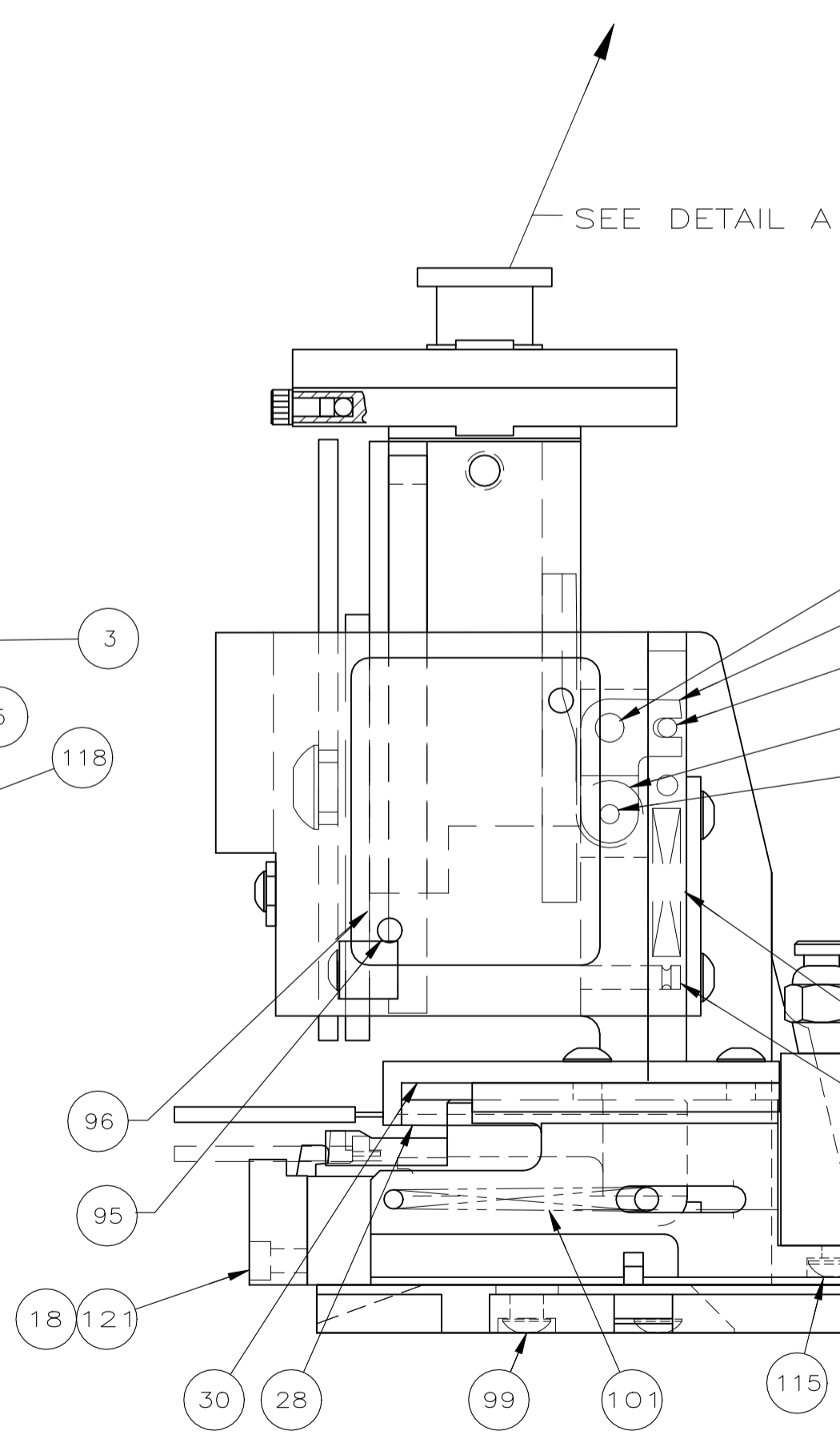
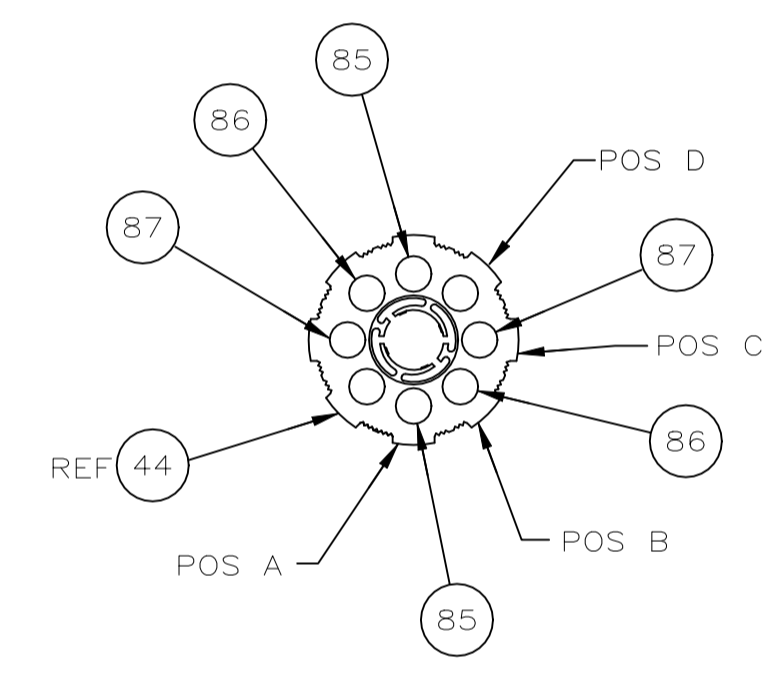
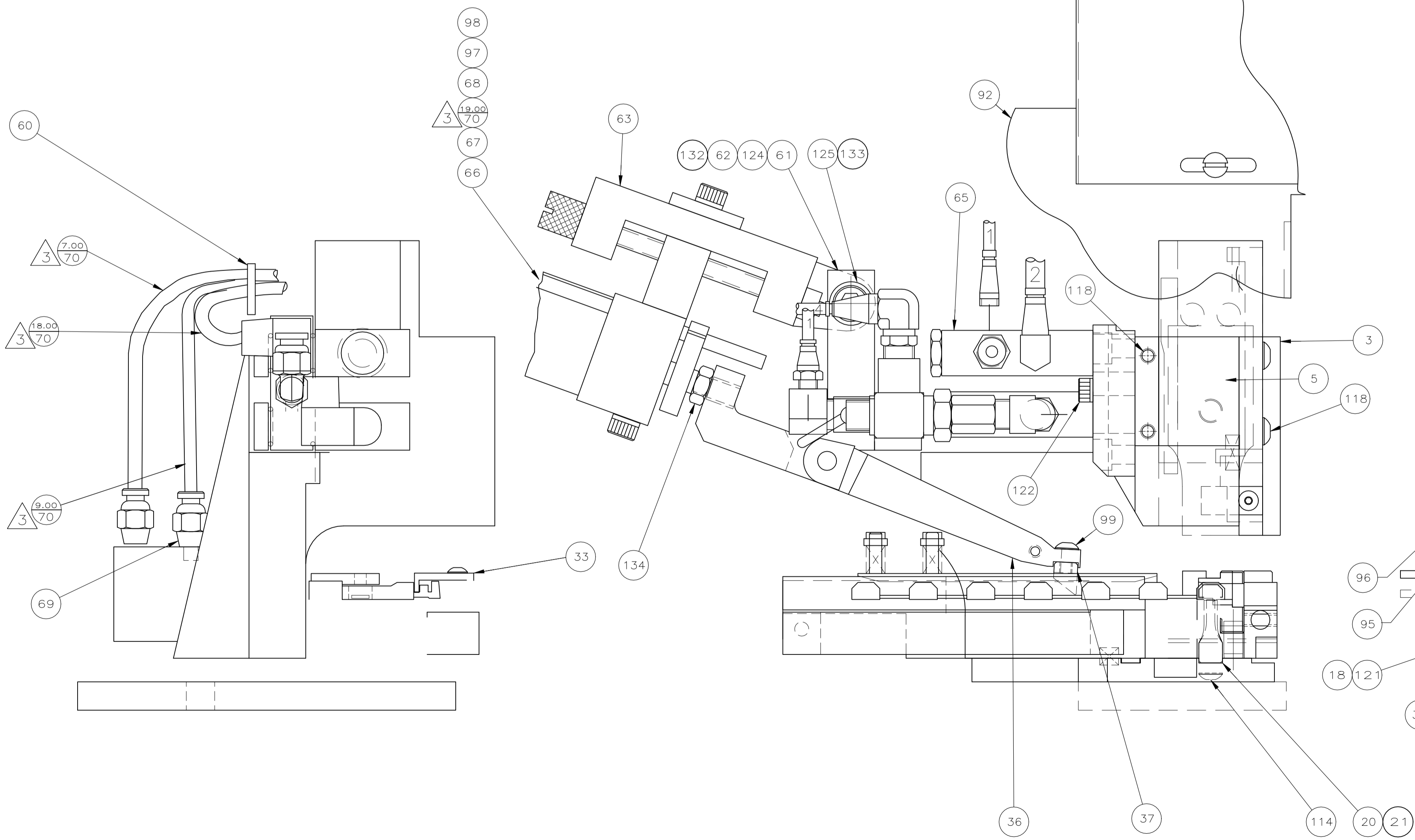
THIS DRAWING IS A CONTROLLED DOCUMENT. DRAW NO 1385303



DETAIL A



RIGHT SIDE VIEW OF DETAIL A



LOC A  
DIST 66

3308-8 (3/11)

REVISION RECORD	DATE	DN	APVD
- SEE SHEET 1	-	-	-

DIMENSIONS:	TOLERANCES UNLESS OTHERWISE SPECIFIED:
INCHES	0 PLC ± .010
	1 PLC ± .005
	2 PLC ± .002
	3 PLC ± .001
	4 PLC ± .0005
ANGLES:	
SURFACE TEXTURE:	✓

DWN	01AUG01	MATERIAL	HEAT TREAT
C.REICHELDERFER			
CHK	01AUG01		
C.REICHELDERFER			
APVD	01AUG01		
G.BAILEY			
NAME	ULTRA-POD APPLICATOR, .250 STRAIGHT		
SCALE	SIZE	DRAWING NO	SHEET
1:1	A1	1385303	2 of 2
REV	D1		

CUSTOMER ACCESSIBLE PRODUCTION DRAWING