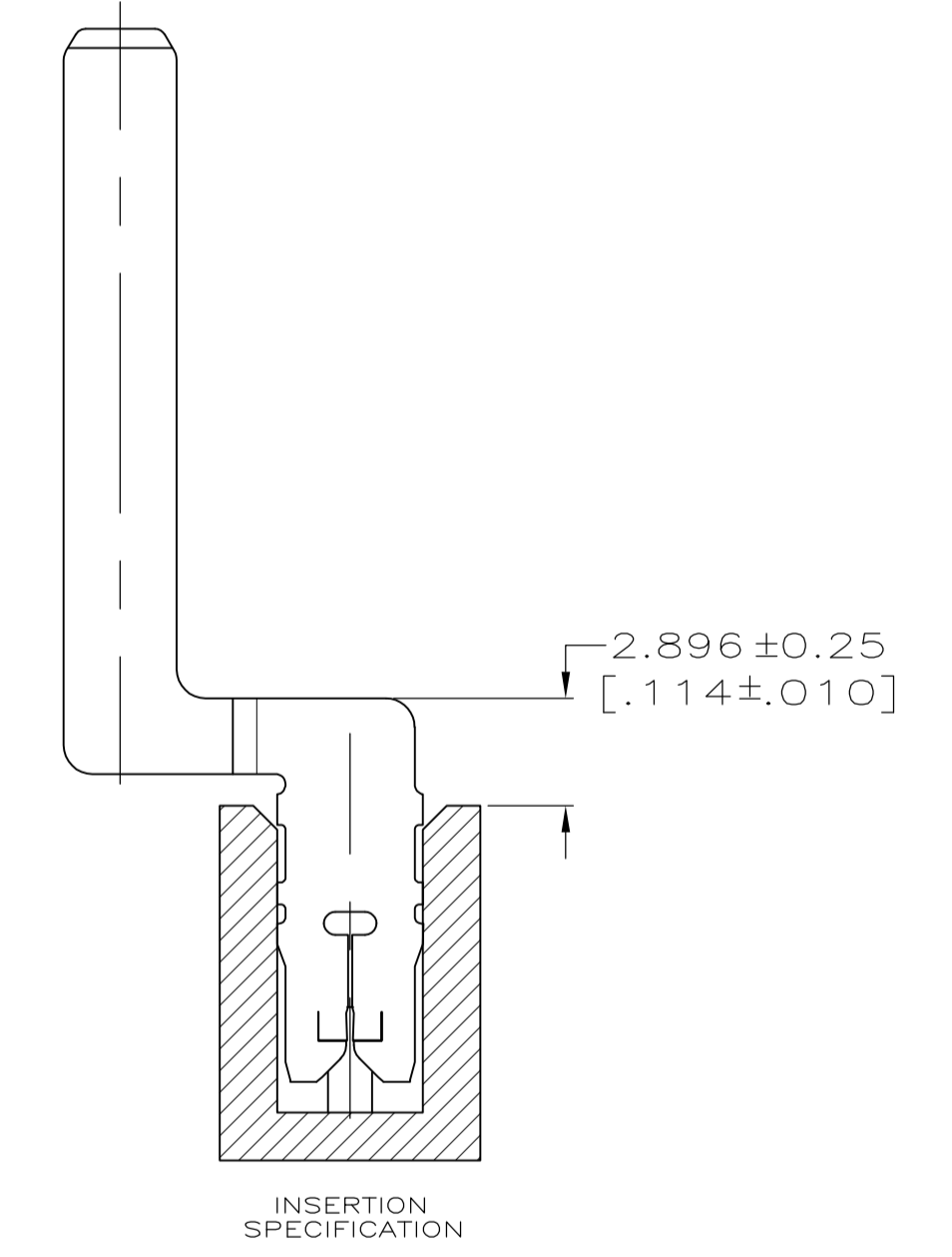
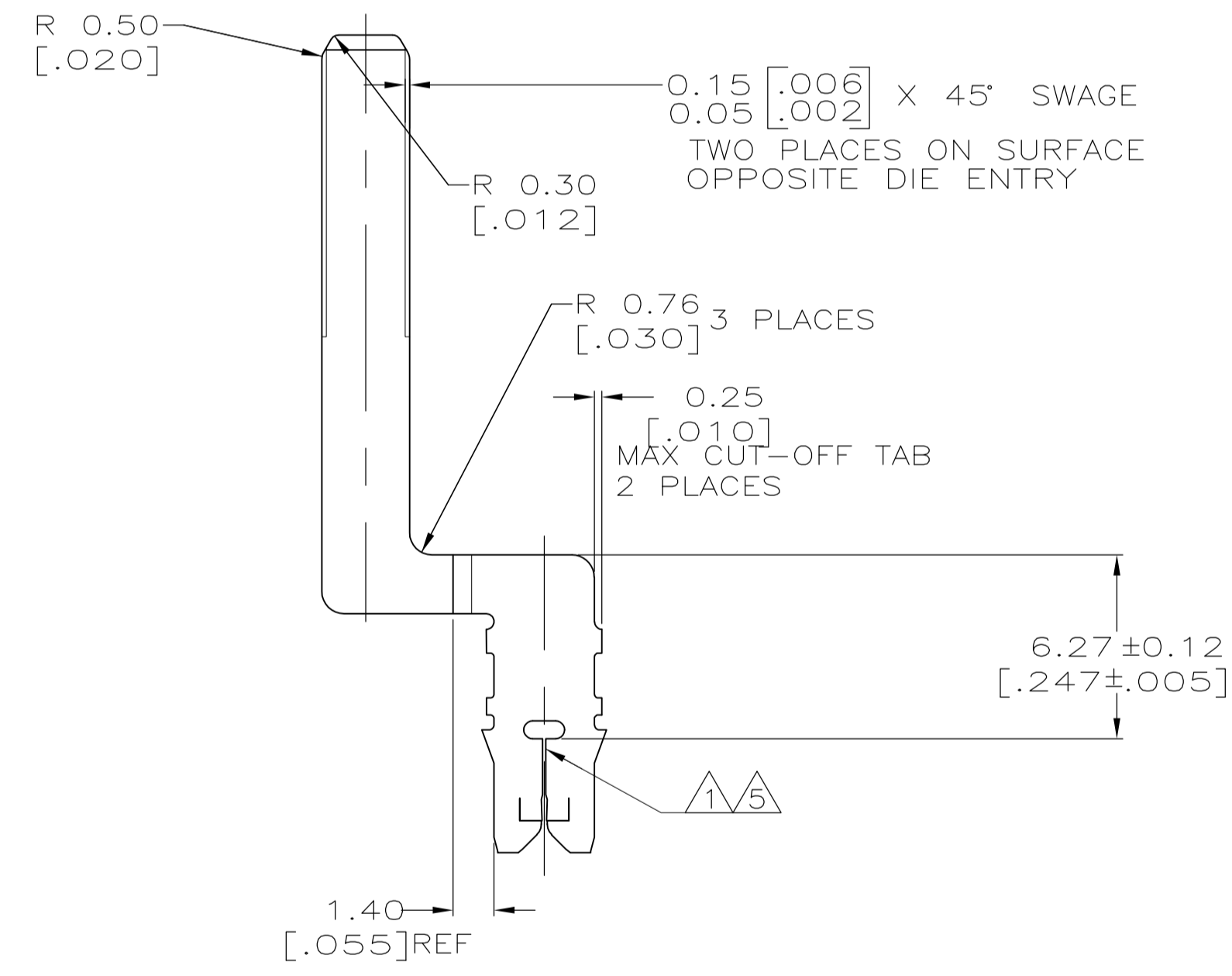
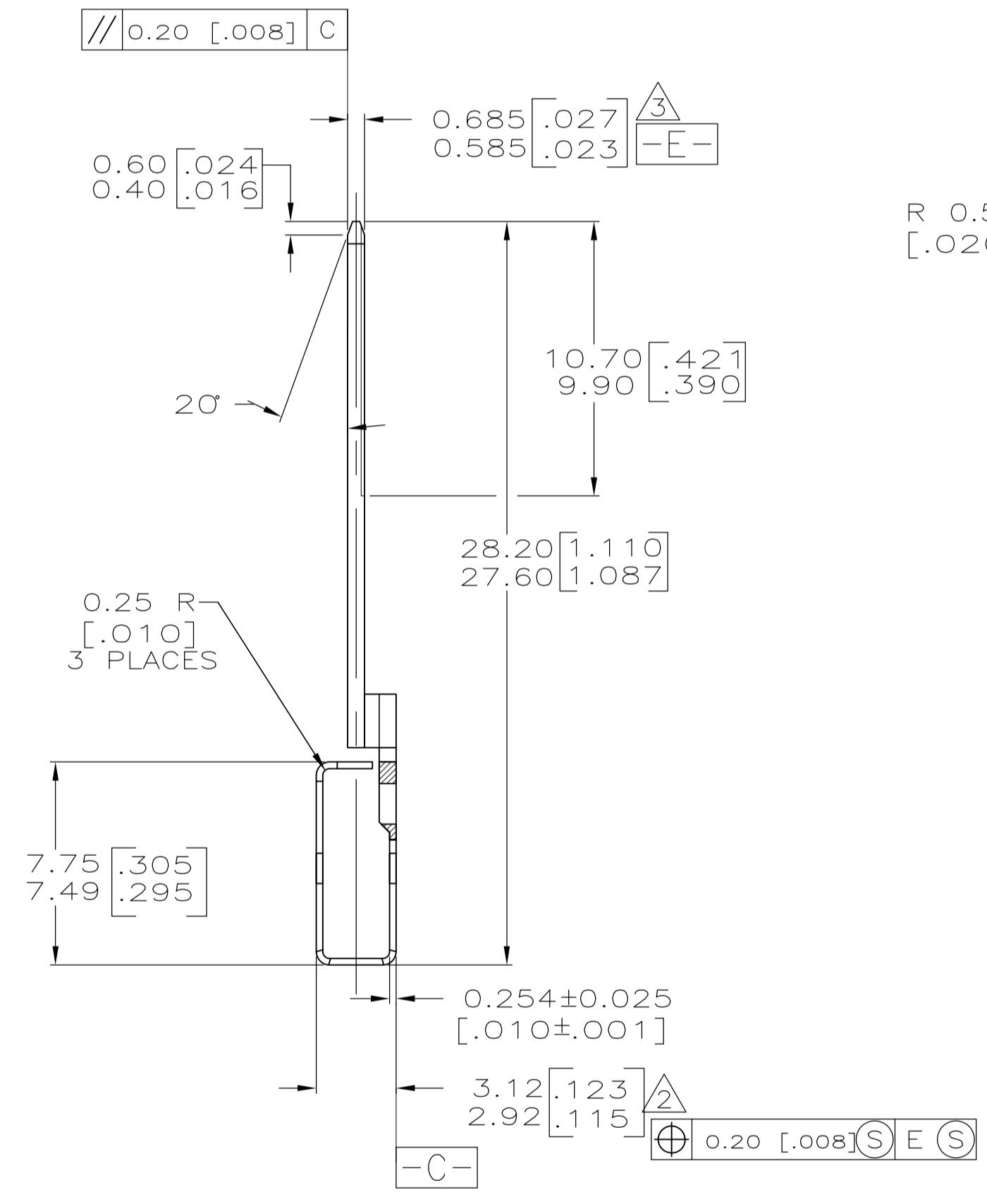
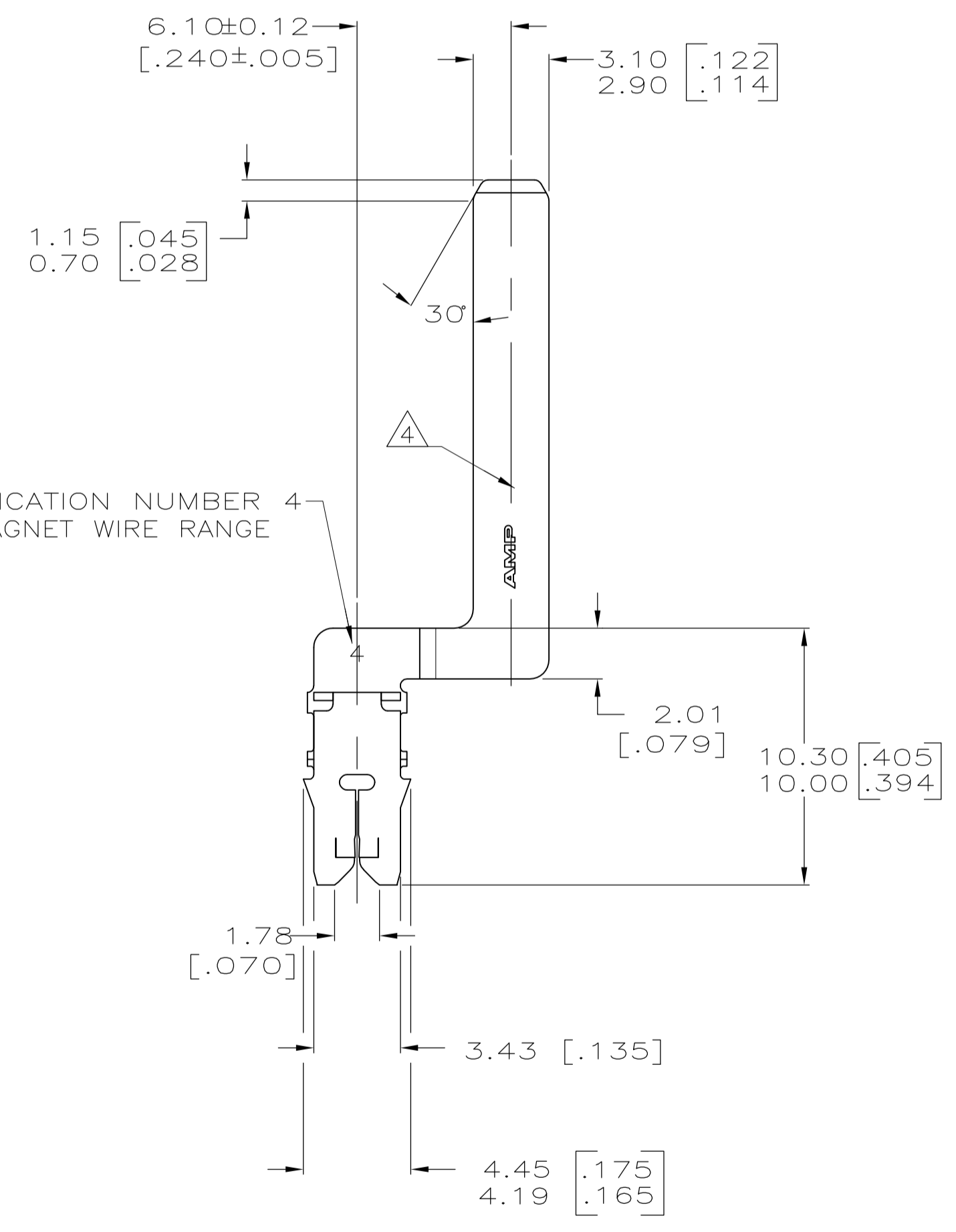
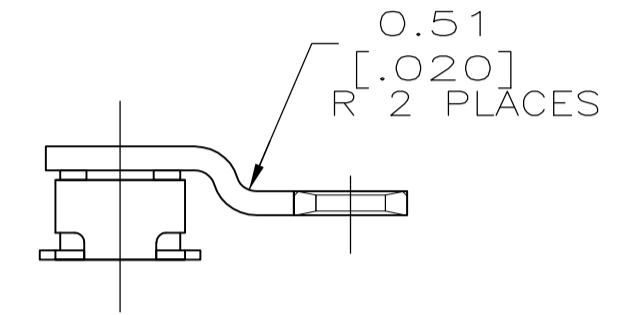
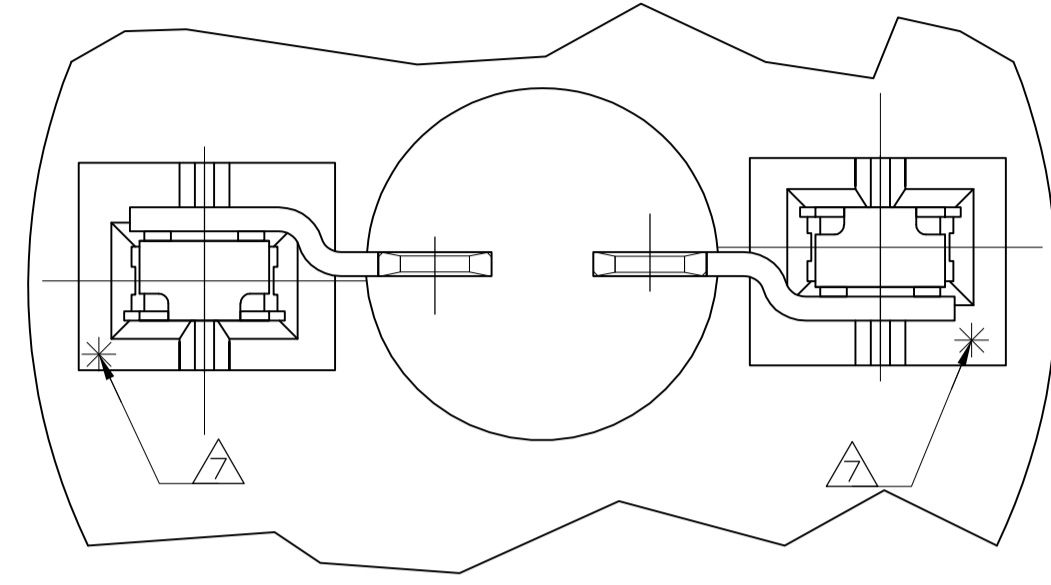


LOC		DIST		REVISIONS			
AF	50	REV	DATE	BY	APPV	DATE	DESCRIPTION
A1	ECO-14-002653		24FEB14	PKS	RRP		

- ① SLOT TERMINATES A SINGLE 0.20mm DIA [#32] AWG COPPER MAGNET WIRE.
- ② BOX TO MEET THIS DIMENSION WHEN INSERTED INTO A CAVITY 3.12 [.123] DEEP.
- ③ SYMMETRY TO BE MEASURED AT THE "NOSE" OF THE BOX.
- ④ MEASURE PLATING THICKNESS ON THE TAB; FORMED SIDE OF THE TERMINAL.
- ⑤ SLOT MUST ACCEPT A 0.089 [.0035] DIA PIN GAGE; SLOT MUST NOT ACCEPT A 0.18 [.007] DIA PIN GAGE. MEASURE ONE BEAM AT A TIME.
- ⑥ 0.001 [.000040] MIN. THICK TIN PLATE
- ⑦ POINT OF MEASUREMENT, LOCATED APPROXIMATELY AS SHOWN



IDENTIFICATION NUMBER 4 FOR MAGNET WIRE RANGE

1217032-1  
PART NUMBER

THIS DRAWING IS A CONTROLLED DOCUMENT.		DIN R GRZYBOWSKI 24NOV97		TE Connectivity	
DIMENSIONS: INCHES		CHK M.S.FEHER 24NOV97		NAME NELSON E. NEFF	
TOLERANCES UNLESS OTHERWISE SPECIFIED:		APVD		PRODUCT SPEC	
0 PLC ± -		108-2012		APPLICATION SPEC	
1 PLC ± -		114-2046		RESTRICTED TO	
2 PLC ± 0.18[.007]		SIZE A1		CAGE CODE 00779	
3 PLC ± -		DRAWING NO 1217032		SHEET 1 OF 1	
4 PLC ± -		SCALE 5:1		REV A1	
ANGLES ± 3°		CUSTOMER DRAWING			
MATERIAL BRASS		FINISH			