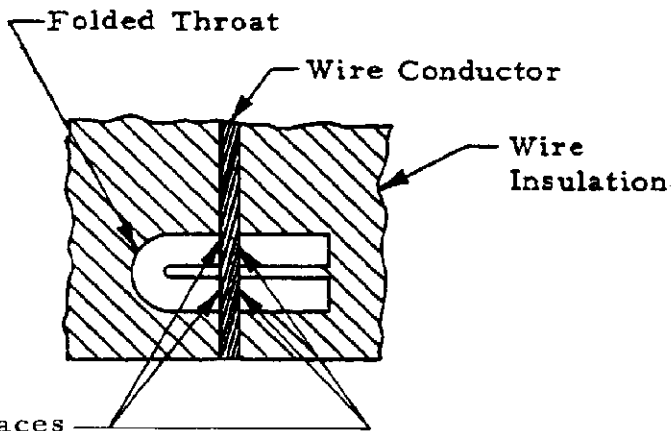


APPLICATION SPECIFICATION

1. SCOPE

This specification covers the requirements for application of AMP\* CR (Camed Rectangular) series ribbon cable receptacle connectors. These requirements are applicable to all termination tooling. For specific part numbers relative to the products covered by this specification, see Figure 8.

2. NOMENCLATURE



Section A-A

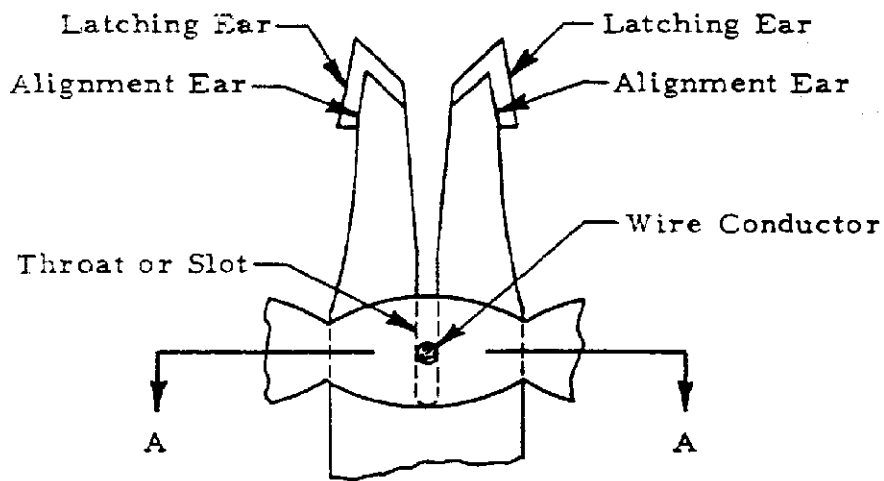


Figure 1

\*Trademark of AMP Incorporated.

© COPYRIGHT 1983 BY AMP INCORPORATED HARRISBURG, PA. ALL INTERNATIONAL RIGHTS RESERVED. AMP PRODUCTS MAY BE COVERED BY U.S. AND FOREIGN PATENTS AND/OR PATENTS PENDING.

B  
DIST  
10

LTR	REVISION RECORD	APP	DATE	DR <i>Ray English 5-3-83</i>	<b>AMP</b>   AMP INCORPORATED Harrisburg, Pa. 17105
				CHK <i>Ray E. Smith 5-4-83</i>	
				APP <i>Ray E. Smith 5/4/83</i>	LOC <b>B</b>
					NO <b>114-10012</b>
					REV <b>0</b>
SHEET 1 OF 5				TITLE CONNECTOR, RECEPTACLE, RIBBON CABLE, CR SERIES, APPLICATION OF	

### 3. REQUIREMENTS

#### 3.1. Cable

Ribbon cable shall be 26, 28 and 30 AWG solid or 28 AWG stranded copper conductors with PVC insulation meeting the dimensional requirements of Figure 2.

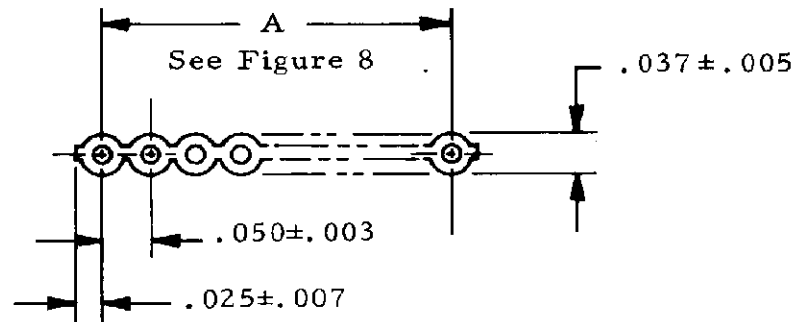


Figure 2

#### 3.2. Cable Preparation

The end of each cable shall be cut straight and perpendicular to the edge of the cable as indicated in Figure 3. No other cable preparation is necessary. However, care shall be taken when aligning ribbon cable prior to terminating.

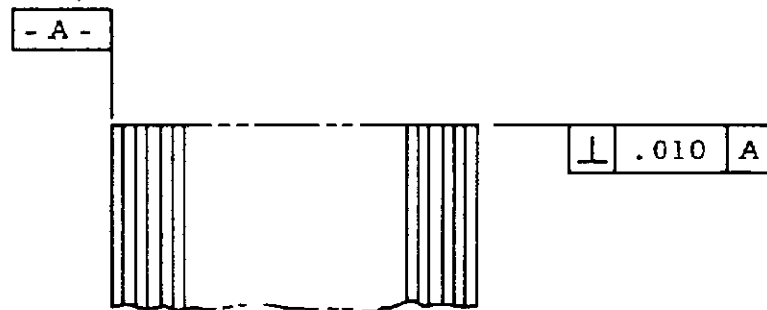


Figure 3

**AMP**

AMP INCORPORATED  
Harrisburg, Pa. 17105

LOC  
**B**

SHEET  
2 OF 5

NO

114-10012

REV  
0

### 3.3. Cable Location

Cable shall be located relative to the front of the connector assembly within the limits indicated in Figure 4.

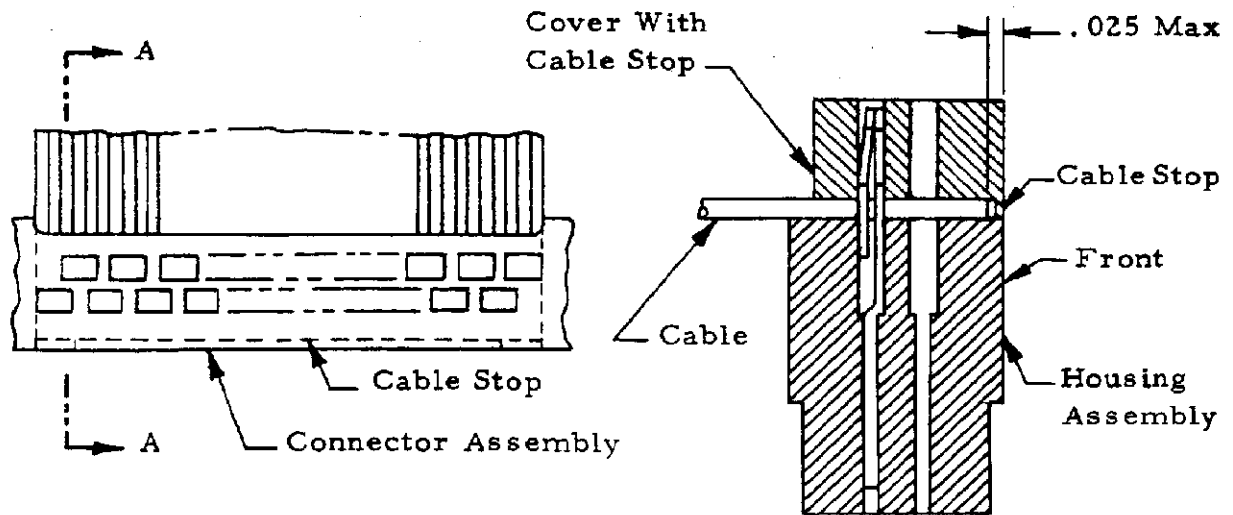


Figure 4

### 3.4. Terminal Position

#### A. Alignment

Each terminal shall straddle the conductor in the area of termination as indicated in Figure 1.

#### B. Exposed Copper

There shall be no visually exposed copper chips or broken strands.

### 3.5. Cover

#### A. Alignment

After the cover is applied, all terminal tips shall be visible in each window as indicated in Figure 5. If one is missing this is a good indication it is bent downward under the cover and is cause for rejection.

**AMP**

AMP INCORPORATED  
Harrisburg, Pa. 17105

LOC  
**B**

SHEET  
3 OF 5

NO

114-10012

REV  
0

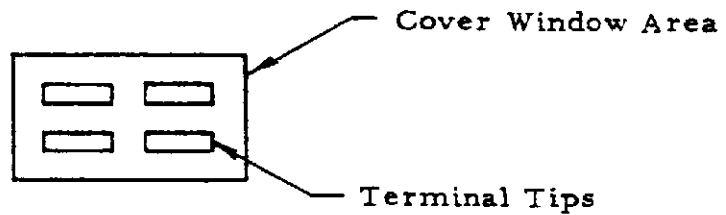


Figure 5

B. Securement of Cover

It shall be assured that cover is securely applied to the terminated housing assembly. Cover is securely applied when it is bottomed on housing assembly.

- (1) On 40 position connectors, cover is secured to housing assembly through mounting holes and applied screw as indicated in Figure 6.

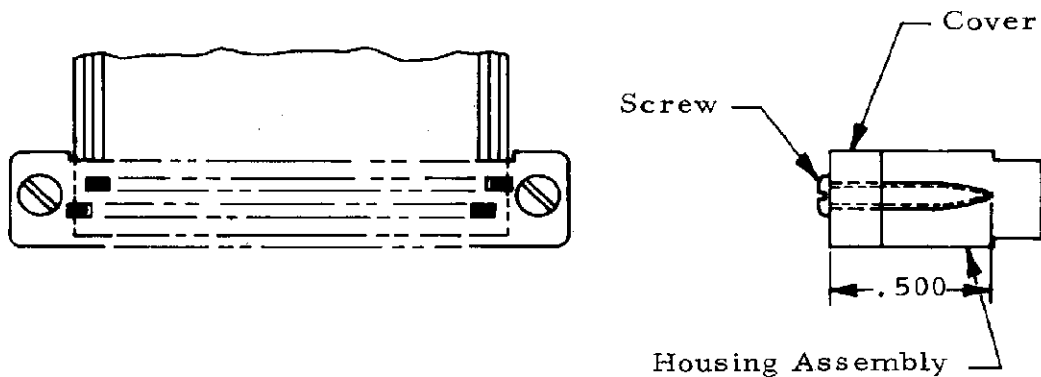


Figure 6

- (2) On 26 position connectors, cover is secured to housing assembly when latching detents are fully seated over ledge as indicated in Figure 7.

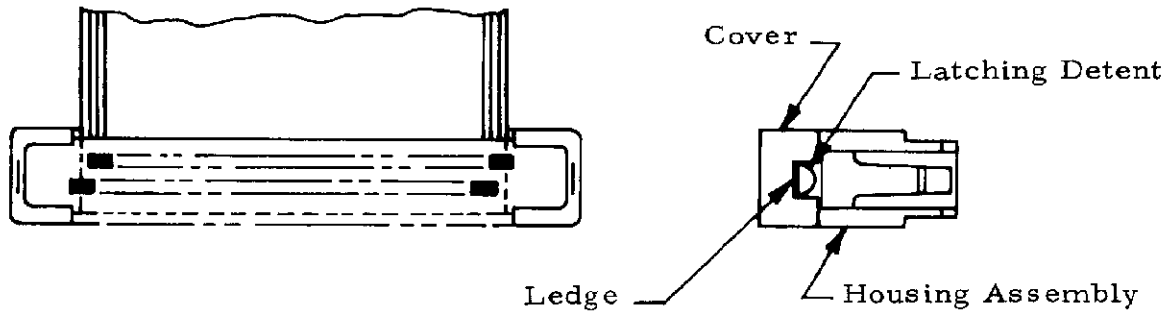


Figure 7

### 3.6. Workmanship

The CR series ribbon cable receptacle connector termination shall be carefully examined, both prior to and after applying the cover, to determine that it meets the requirements of this specification. There shall be no signs of bent or misaligned terminals as a result of damaged or misadjusted tooling.

Connector Assembly Part Numbers	Position	A (See Figure 2)
208766	26	1.250±.010
208498	40	1.950±.015

Figure 8

**AMP**

AMP INCORPORATED  
Harrisburg, Pa. 17105

LOC  
**B**

SHEET  
5 OF 5

NO

114-10012

REV  
0