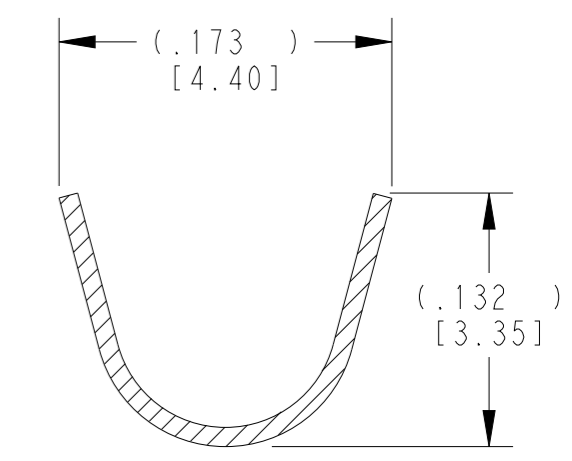
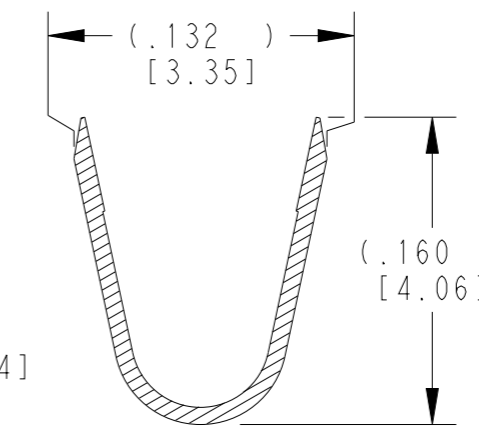
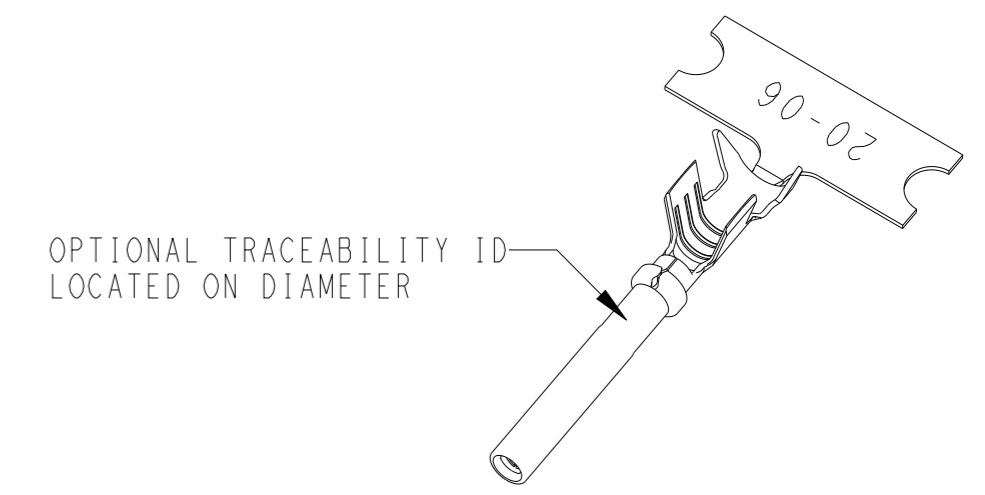
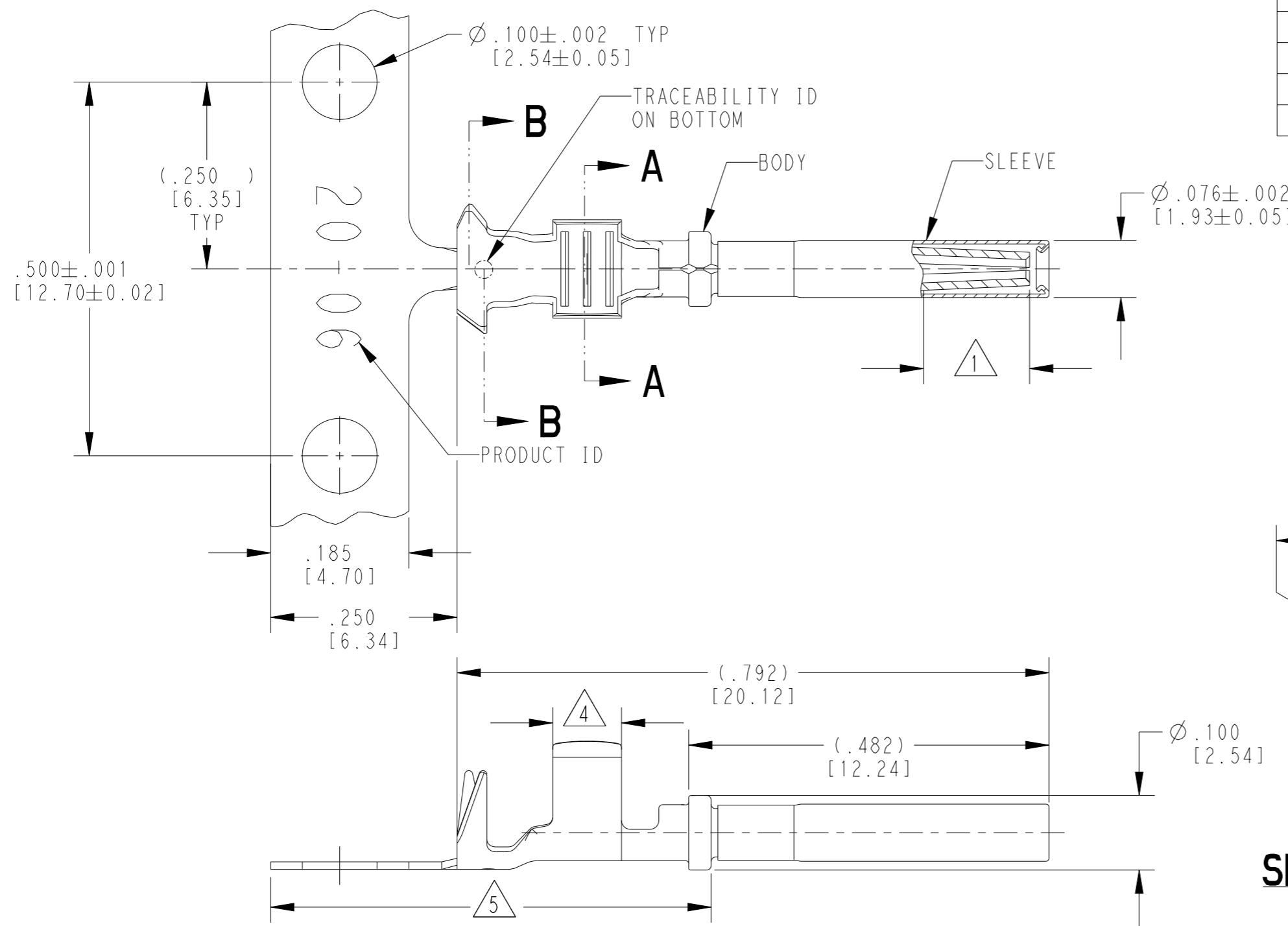


THIS DRAWING IS UNPUBLISHED. RELEASED FOR PUBLICATION 2018  
© COPYRIGHT 2018 BY TE ALL RIGHTS RESERVED.

REVISIONS					
P	LTR	DESCRIPTION	DATE	DWN	APVD
	C	REVISED PER E.O. P20392	03DEC2009		RDR
	D	REVISED PER PCN :E-18-007949	23MAY2018	DD	DM
	D1	REVISED PER PCN-24-200133	18MAR2024	RK	CB
	E	REVISED PER PCN-24-208998	21MAY2024	GB	DM



**SECTION A-A**  
WIRE BARREL

**SECTION B-B**  
INSULATION BARREL

5 TIN PLATING MAY BE IN THIS REGION.

4 TIN PLATED REGION.

3 MATERIAL:  
BODY: .010 [0.25] THICK COPPER ALLOY  
SLEEVE: STAINLESS STEEL


2 WIRE RANGE: 16 AWG TO 14 AWG [1.00-2.50 mm<sup>2</sup>]  
INSULATION RANGE: Ø.075-.125 [Ø1.91-3.18]

1 GOLD PLATED REGION.

NOTES: UNLESS OTHERWISE SPECIFIED

TE INTERNAL PN	DEUTSCH PN	REV	PLATING
1062-20-0622	1062-20-0622	C	Ni/Cu overall
1062-20-0644	1062-20-0644	D	Selective Au, Ni overall, Sn/Ni Wire Barrel
1062-20-0677	1062-20-0677	C	Sn/Ni/Cu overall

THIS DRAWING IS A CONTROLLED DOCUMENT.

DWN J. APOSTOL 30MAY2007	 TE Connectivity	NAME STAMPED CONTACT SOCKET SIZE 20	RESTRICTED TO -
CHK D. MEYER 02DEC2009			
APVD R. REED 03DEC2009			
PRODUCT SPEC 108-151000			
DIMENSIONS: INCHES [mm]	TOLERANCES UNLESS OTHERWISE SPECIFIED:	APPLICATION SPEC 114-151003	SIZE A3
MATERIAL 3	FINISH SEE TABLE	WEIGHT 0.22 g	CAGE CODE 4AFU8
		CUSTOMER DRAWING	DRAWING NO C=1062-20-06XX
		SCALE 6:1	SHEET 1 OF 1
			REV E