

## SAFETY ORGANIZATIONS

THIS FILTER HAS BEEN FORMALLY RECOGNIZED, CERTIFIED OR APPROVED BY THE LISTED AGENCY. THEREFORE, ALL TEST/REQUIREMENTS SPECIFIED IN THE LATEST REVISION OF THE FOLLOWING AGENCY STANDARDS HAVE BEEN MET:

UL RECOGNIZED: UL 1283  
 CSA CERTIFIED: CSA 22.2, #8  
 TUV APPROVED: EN60950

## OPERATING SPECIFICATIONS

LINE CURRENT/VOLTAGE: 100 AMP/55°C, 80 VDC

LINE FREQUENCY: DC

MAXIMUM LEAKAGE CURRENT,  
 EACH LINE TO GROUND:

N/A mA @ 120V 60Hz  
 N/A mA @ 250V 50Hz

OPERATING AMBIENT TEMP. RANGE: -10°C TO +55°C @ RATED CURRENT,  $I_r$ .

IN AN AMBIENT,  $T_a$ , HIGHER THAN 55°C, THE MAXIMUM OPERATING CURRENT,  $I_o$ , IS AS FOLLOWS:

$$I_o = I_r \sqrt{\frac{85 - T_a}{30}}$$

## RELIABILITY SPECIFICATIONS:

STORAGE TEMPERATURE: -40°C TO +85°C  
 HUMIDITY: 21 DAYS @ 40°C 95% RH.  
 CURRENT OVERLOAD TEST: 6 TIMES  $I_r$  FOR 8 SECONDS

## TEST SPECIFICATIONS:

INDUCTANCE: 0.340mH NOMINAL  
 CAPACITANCE: (MEASURED @ 1KHz, 0.250VAC MAX., 25°C±1°C)  
 LINE TO GROUND: 0.10  $\mu$ F ±20%  
 LINE TO LINE: 4.425  $\mu$ F ±20%  
 DISCHARGE RESISTOR: 0.165M $\Omega$   
 L/G AND L/L I.R.  
 NO DISCHARGE RESISTOR: 6000M $\Omega$  (MIN.) @ 100VDC, 20°C AND 50% RH

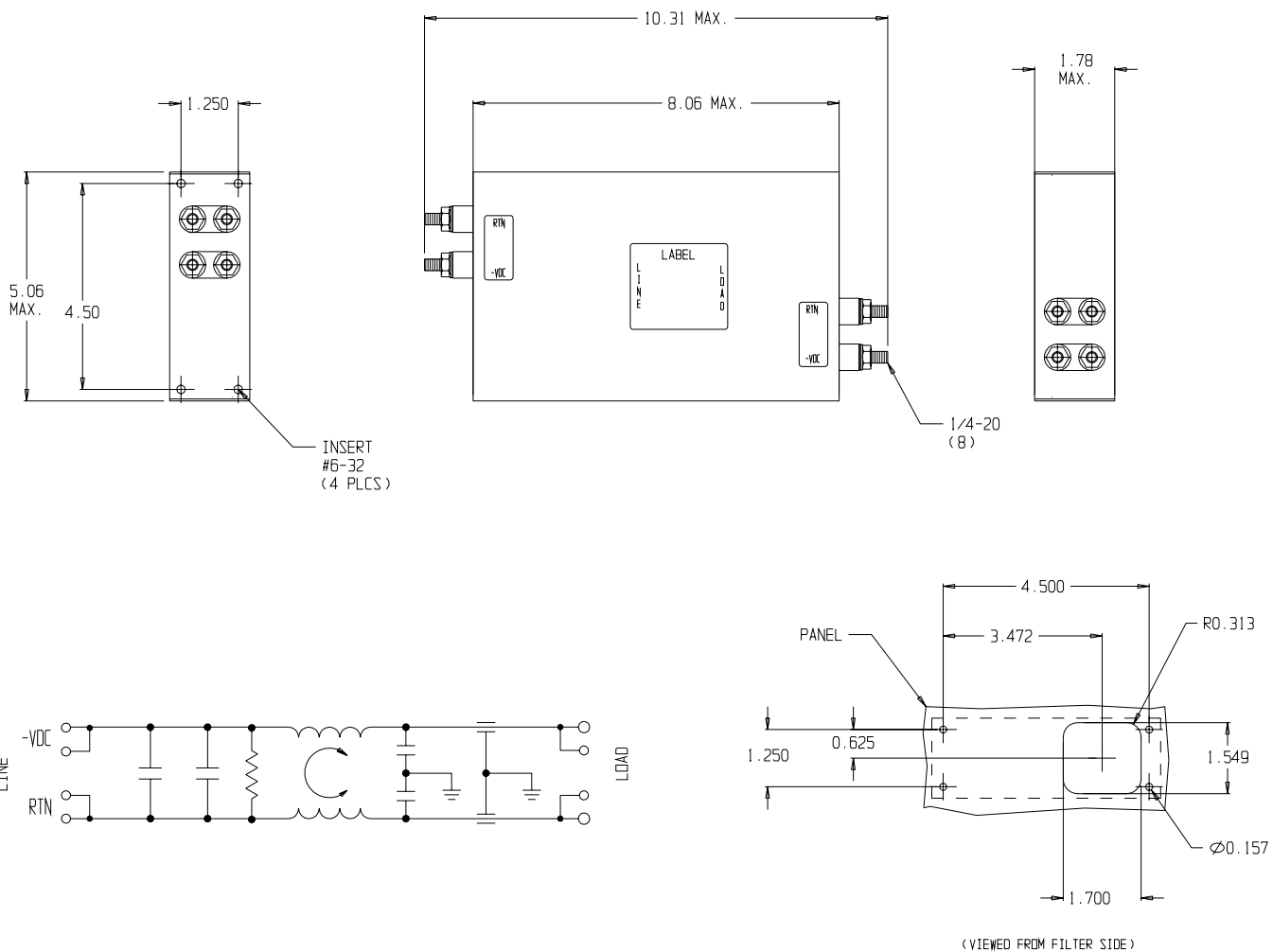
## RECOMMENDED RECEIVING INSPECTION HIPOT:

LINE TO GROUND: 2250 VDC FOR 1 MINUTE  
 LINE TO LINE: 1450 VDC FOR 1 MINUTE

## FILTER APPROVAL:

THE BEST WAY TO SELECT AND QUALIFY A FILTER IS FOR YOUR ENGINEERING TO TEST THE UNIT IN YOUR EQUIPMENT.

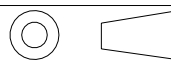
| CATALOG #100DCB6F |         |         |
|-------------------|---------|---------|
| EC#               | APPRVD. | DDMMYY  |
| 0631-0093-03      |         | 11MAR03 |



## 50 $\Omega$ - 50 $\Omega$ (MINIMUM) INSERTION LOSS

| FREQUENCY<br>MHz | .01 | .05 | 0.1 | .15 | 0.5 | 1  | 3  | 5  | 10 | 20 | 50 TO<br>300 | 300 TO<br>3000 |
|------------------|-----|-----|-----|-----|-----|----|----|----|----|----|--------------|----------------|
| COMMON<br>dB     |     |     | 9   | 16  | 38  | 42 | 52 | 60 | 42 | 26 | 40           | 30<br>TYP.     |
| DIFF.<br>dB      | 14  | 29  | 35  | 39  | 33  | 30 | 56 | 53 | 41 | 30 |              |                |

THIRD ANGLE  
 PROJECTION



UNLESS OTHERWISE SPECIFIED,  
 TOLERANCE TO BE ±.025  
 MATERIAL & FINISH: AS SUPPLIED

This document is proprietary to CORCOM INC. and is not to be reproduced nor used for manufacturing purposes except on CORCOM'S prior written consent.

**tyco** / **Electronics** **corcom**  
 844 E. ROCKLAND RD. LIBERTYVILLE IL 60048

## POWER LINE FILTER

|                            |                    |                 |          |
|----------------------------|--------------------|-----------------|----------|
| CAD FILE: G:\CD\100DCB6F01 | TYCO # 3-1609074-4 |                 |          |
| SCALE: NTS                 | DATE: 11-7-00      | CATALOG NO.     | REV.     |
| DRW. BY: PJD               | DRIG: PJD          | <b>100DCB6F</b> | <b>1</b> |