

APPLICATION SPECIFICATION

1. SCOPE

This specification covers the requirements for application of AMP\* clinchable printed circuit board receptacles. These requirements are applicable to automatic machine application tools. For application information relative to the parts covered by this specification see Figure 5.

2. NOMENCLATURE

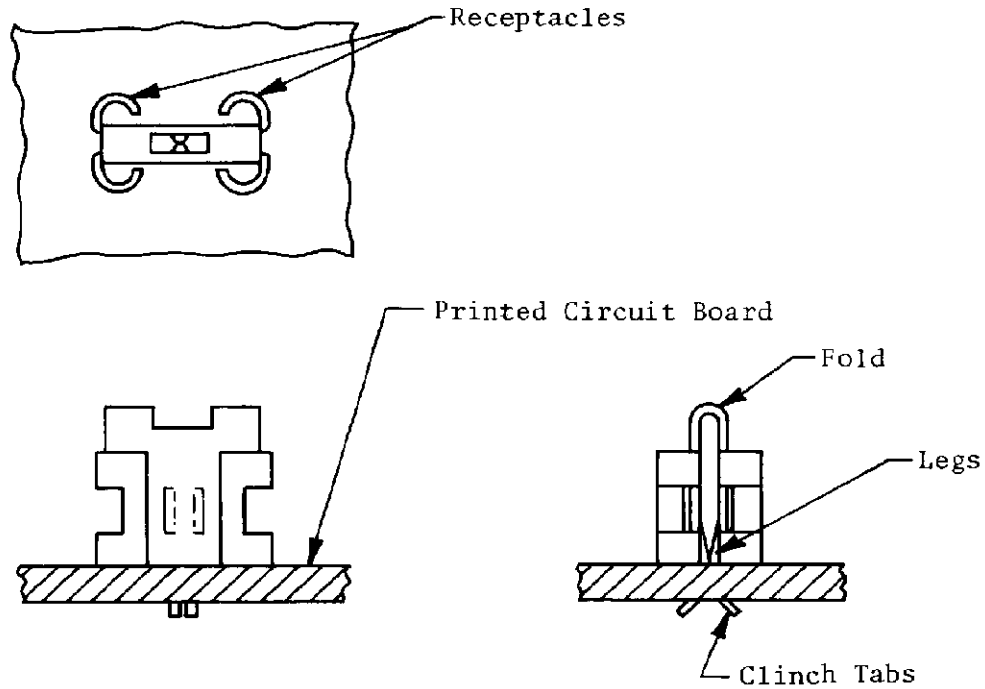


Figure 1

3. REQUIREMENTS

3.1. Fold

Fold shall be uniform and round.

3.2. Height

Receptacles shall be of equal height and bottomed on the printed circuit board.

\*Trademark of AMP Incorporated

© COPYRIGHT 1978 BY AMP INCORPORATED, HARRISBURG, PA. ALL INTERNATIONAL RIGHTS RESERVED. AMP INCORPORATED PRODUCTS COVERED BY U.S. AND FOREIGN PATENTS AND/OR PATENTS PENDING.

				DR <i>C. E. [Signature]</i> 11/9/78	<b>AMP</b>   AMP INCORPORATED Harrisburg, Pa.			
				CHK <i>D. Schwank</i> 11/9/78				
				APP <i>C. Thibbs</i> 11-9-78	LOC <b>B</b>	NO <b>A</b>	NO <b>114-2037</b>	REV <b>C</b>
C	Rev Para 3.6.	<i>[Signature]</i>	7-1 -82	SHEET 1 OF 3 NAME RECEPTACLE, PRINTED CIRCUIT BOARD, CLINCHABLE, APPLICATION OF				
B	Rev Para 3.3.	<i>[Signature]</i>	6-21 -82					
A	Rev Figure 5.	<i>[Signature]</i>	3-12 -81					
LTR	REVISION RECORD	APP	DATE					

3.3. Printed Circuit Board

- A. Thickness shall be .062 nominal.
- B. Hole shall be as indicated in Figure 2.

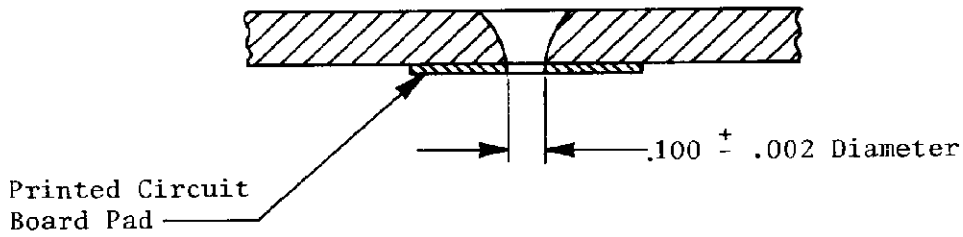


Figure 2

3.4. Clinch Tabs

Clinch tabs shall protrude through hole in the printed circuit board and be clinched within the limits specified in Figure 3.

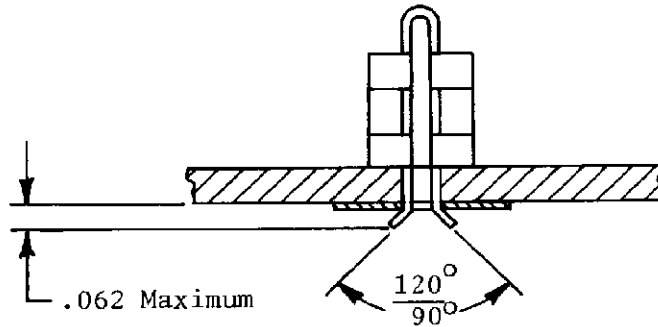


Figure 3

3.5. Alignment

Receptacles shall have a minimum of 1 corner against the printed circuit board after clinching and meet the requirements of Figure 4.

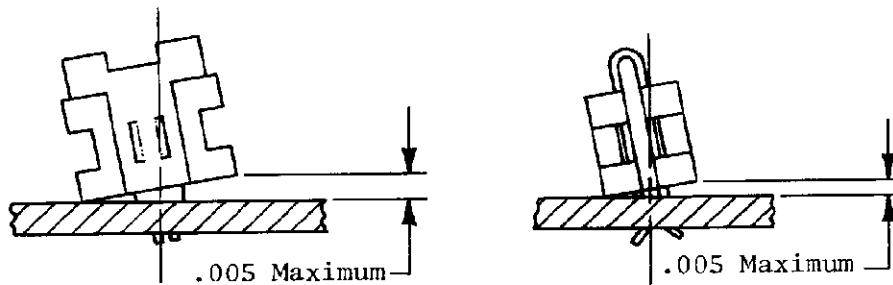


Figure 4

<b>AMP</b>		AMP INCORPORATED Harrisburg, Pa.	SHEET 2 OF 3
LOC B	NO A	114-2037	REV C
NAME RECEPTACLE, PRINTED CIRCUIT BOARD, CLINCHABLE, APPLICATION OF			

3.6. Tensile Strength

Clinched receptacles shall withstand an axial load of 5 pounds minimum.

3.7. Workmanship

There shall be no adverse distortion or effects detrimental to the ability of the receptacle to perform as designed after clinching.

Receptacle Part Number		Applicable Terminal
For Modular Insertion Tooling	For "U" Press Insertion Tooling	
62745	62750	.250 x .016 Spade
62792	62751	
62952	62793	

Figure 5

SHEET <u>3</u> OF <u>3</u>	<b>AMP</b>   AMP INCORPORATED Harrisburg, Pa.		
	LOC <b>B</b>	NO <b>A</b>	114-2037
REV <b>C</b>			
NAME RECEPTACLE, PRINTED CIRCUIT BOARD, CLINCHABLE, APPLICATION OF			