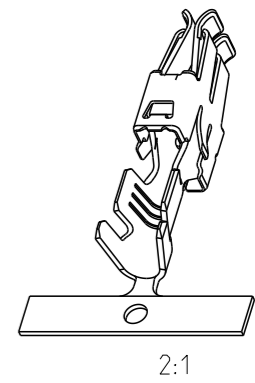
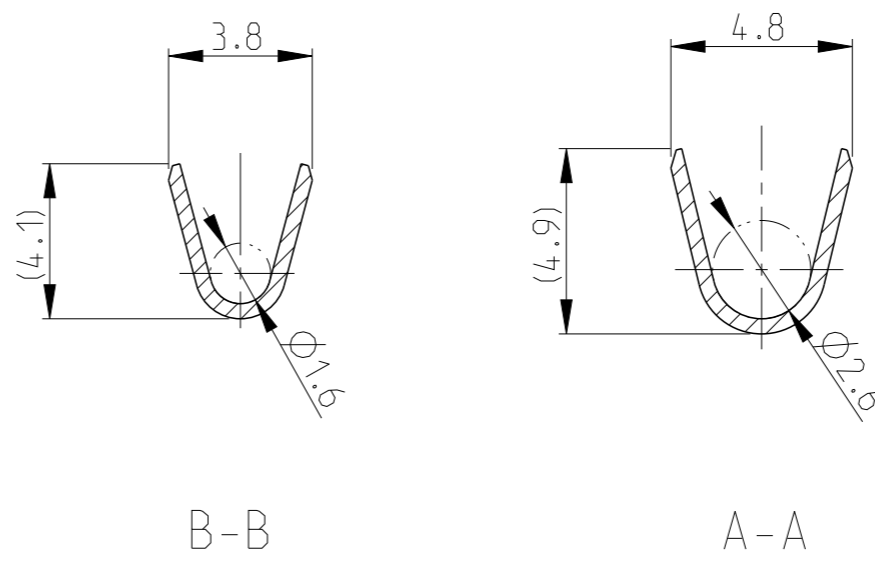
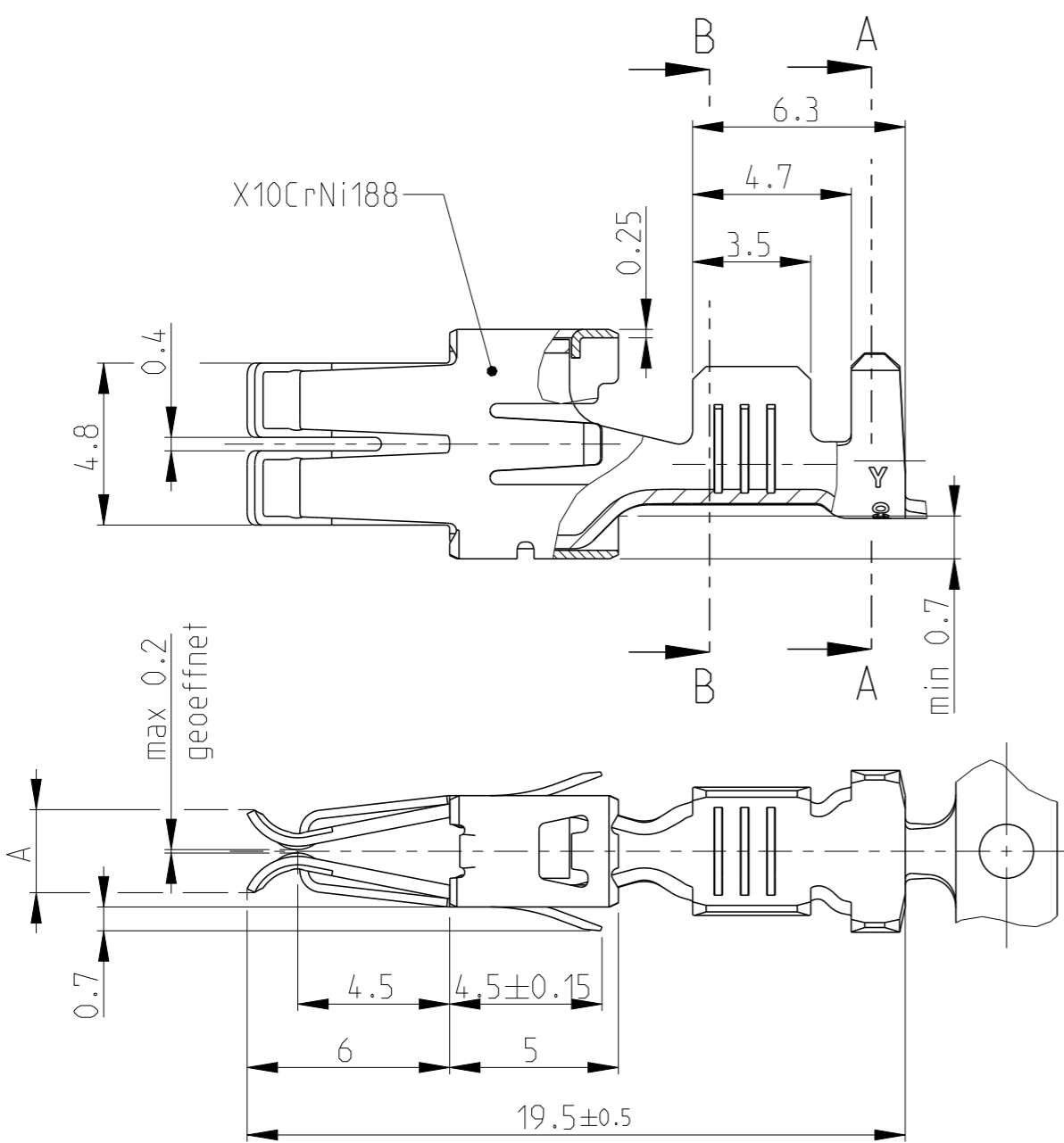


THIS DRAWING IS UNPUBLISHED. RELEASED FOR PUBLICATION. ALL RIGHTS RESERVED.

LOC	DIST	REVISIONS			
P	LTR	DESCRIPTION	DATE	DWN	APVD
		C 9	ECR-19-018282	22NOV2019	KD FL
		C 10	ECR-19-019847	20DEC2019	KD FL
		C 11	ECR-21-124363	28JAN2022	TL FL
		C 12	ECR-24-205012	08APR2024	TL FL



- Notes
- 1 OBSOLETE
 - 2 PRELIMINARY - NOT RELEASED FOR PRODUCTION
 - 3 CONTACT ZONE SELECTIVE PRE SILVER PLATED MIN 1-1.5 µm
 - 4 GENERAL TOLERANCE: ± 0.2, ± 1°
 - 5 PACKAGING CAN BE DIFFERENT BASED ON THE MANUFACTURING LOCATION. QUANTITY AND MACHINE FITTING ARE THE SAME

INSUL. RANGE	WIRE RANGE	A	LP NO	FINISH	MATERIAL	PART NO.	REV	
Ø 2.2-3.0 mm	>1-2.5 mm ²	2.5	1	1241826-5	vorversilbert/PRESILVERED	CuFe2	964203-5	C
		2.5	1	1241826-4	vorversilbert/PRESILVERED 1-1.5 µm	CuSn4	964203-4	C
		2.5	1	1241826-3	vorversilbert/PRESILVERED 3-4.5 µm	CuSN4	964203-3	C
		2.5	1	1241826-2	vorverzinnt/PRETINNED	CuSN4	964203-2	C
		2.5	1	1241826-1	vorverzinnt/PRETINNED	CuFe2	5 964203-1	C

THIS DRAWING IS A CONTROLLED DOCUMENT.

DWN: ATZMANN 06.01.94
 CHK: BARTOSCH
 APVD: Bleicher, M.
 PRODUCT SPEC: 108-18049-1
 APPLICATION SPEC: 114-18037
 WEIGHT: 0.82g ref

STE TE Connectivity

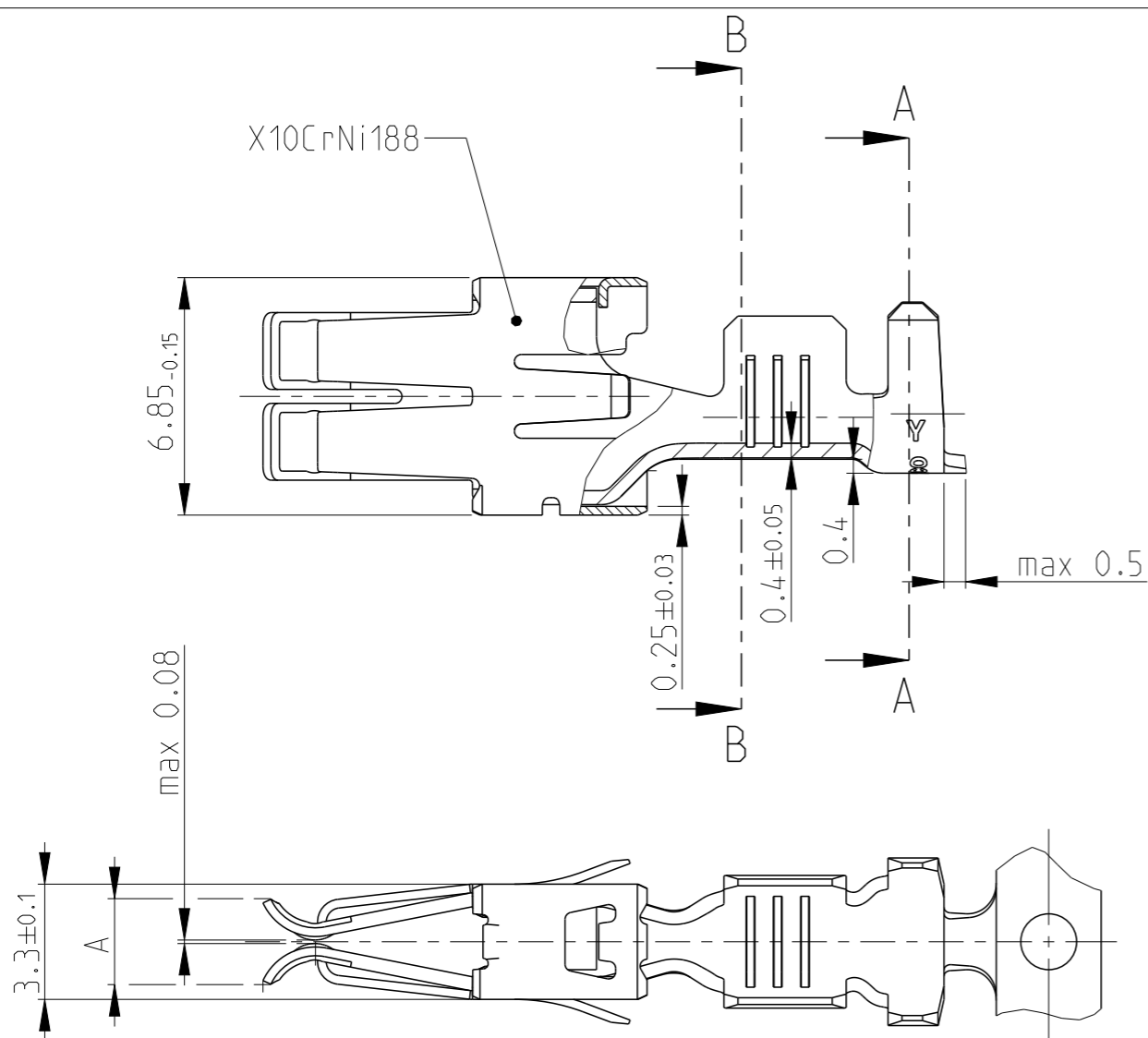
NAME: STANDARD POWER TIMER KONTAKT (Gerade Tulpe)

SIZE: A3 CAGE CODE: 00779 DRAWING NO: 964203 RESTRICTED TO: -

Customer Drawing SCALE: 5:1 SHEET: 1 OF 10 REV: 12

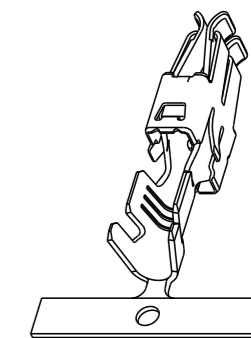
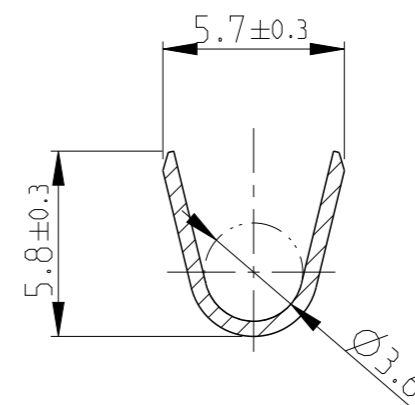
P	LTR	DESCRIPTION	DATE	DWN	APVD
1	SEE SHEET 1	rev_sym_1	rev_date_1	rev_dwn_1	rev_aprv_1
2	rev_desc_2	rev_sym_2	rev_date_2	rev_dwn_2	rev_aprv_2
3	rev_desc_3	rev_sym_3	rev_date_3	rev_dwn_3	rev_aprv_3
4	rev_desc_4	rev_sym_4	rev_date_4	rev_dwn_4	rev_aprv_4

ONLY FOR 3-927833-1 & 3-927833-2
OTHER DIMENSIONS SEE SHEET 1



B-B

A-A



2:1

INSUL. RANGE \varnothing 2.7-3.7 mm	WIRE RANGE >1-2.5 mm ²	2.3 \pm 0.15	-	PRETINNED	CuSn4	3-927833-2	A
		2.3 \pm 0.15	-	PRETINNED	CuFe2	3-927833-1	A
		A	LP NO	FINISH	MATERIAL	PART NO.	REV

THIS DRAWING IS A CONTROLLED DOCUMENT.

DWN ATZMANN 06.01.94

CHK BARTOSCH 18.01.94

APVD Bleicher, M. 28.11.07

PRODUCT SPEC 108-18049-1

APPLICATION SPEC 114-18037

WEIGHT -

Customer Drawing



TE Connectivity

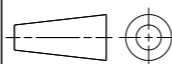
NAME STANDARD POWER TIMER KONTAKT (Gerade Tulpe)

SIZE CAGE CODE DRAWING NO RESTRICTED TO

A3 00779 C-964203

SCALE 5:1 SHEET 2 OF 10 REV 12

DIMENSIONS:
mm



TOLERANCES UNLESS OTHERWISE SPECIFIED:

0 PLC	\pm	\pm 0.2
1 PLC	\pm	
2 PLC	\pm	
3 PLC	\pm	
4 PLC	\pm	\pm 1°
ANGLES	\pm	
FINISH	-	

MATERIAL -

FINISH -

THIS DRAWING IS UNPUBLISHED.

RELEASED FOR PUBLICATION

© COPYRIGHT -

ALL RIGHTS RESERVED.

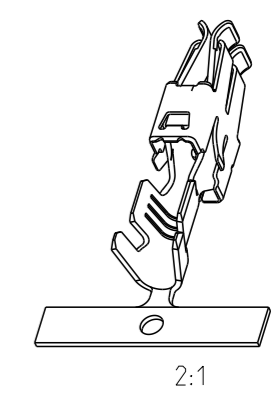
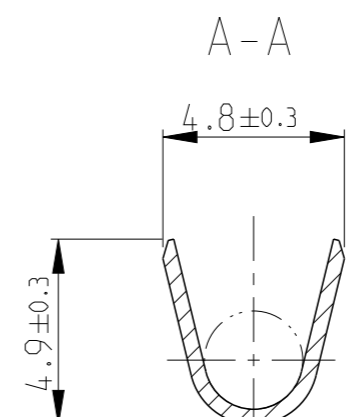
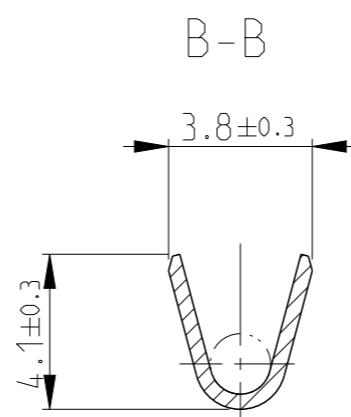
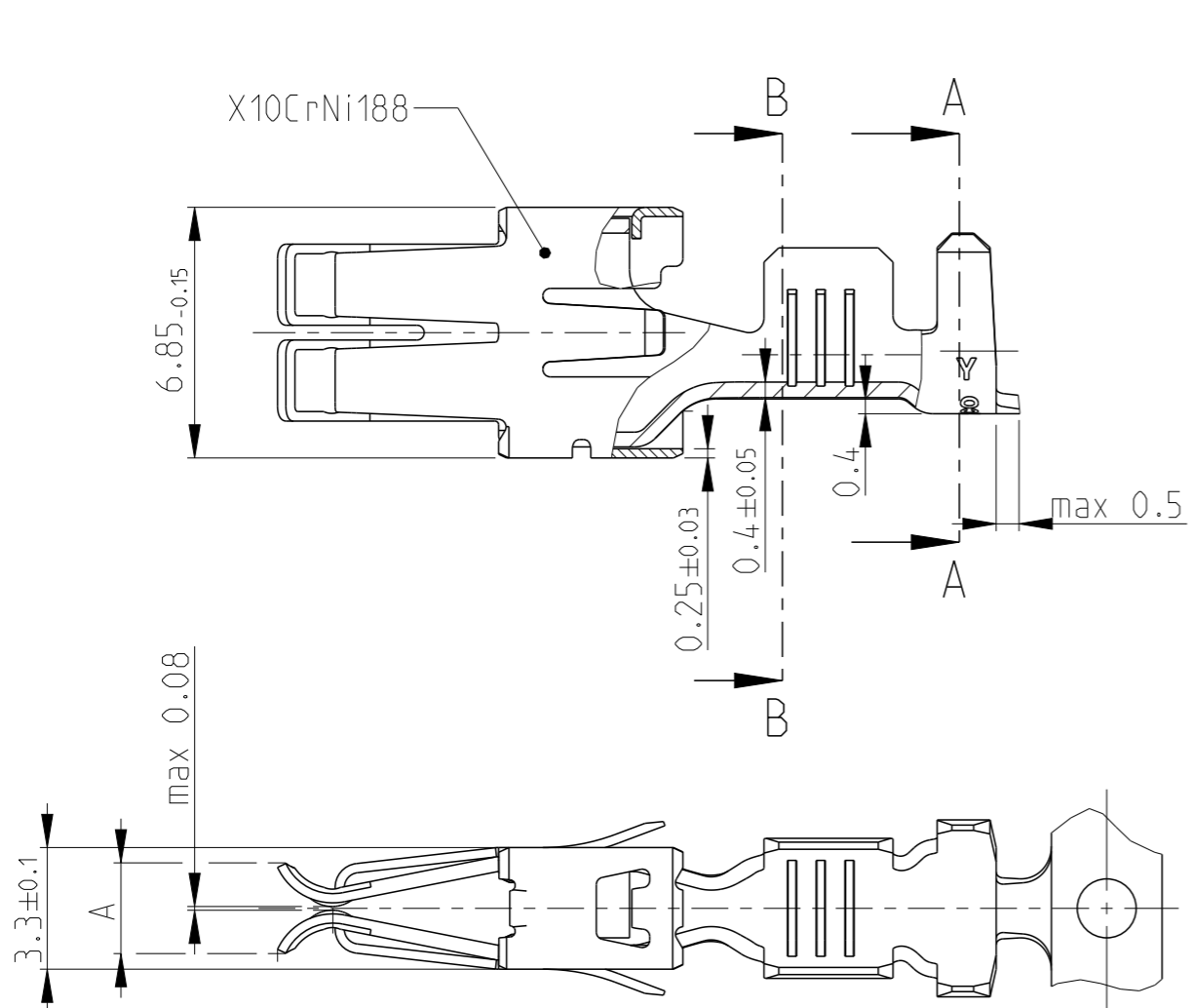
LOC
A1

DIST
-

REVISIONS

P	LTR	DESCRIPTION	DATE	DWN	APVD
1	SEE SHEET 1	rev_sym_1	rev_date_1	rev_dwn_1	rev_apvr_1
2	rev_desc_2	rev_sym_2	rev_date_2	rev_dwn_2	rev_apvr_2
3	rev_desc_3	rev_sym_3	rev_date_3	rev_dwn_3	rev_apvr_3
4	rev_desc_4	rev_sym_4	rev_date_4	rev_dwn_4	rev_apvr_4

ONLY FOR 3-927837-1, 3-927837-2,
3-927837-4 & 3-927837-5
OTHER DIMENSIONS SEE SHEET 1



INSUL. RANGE Ø 2.2-3.0 mm	WIRE RANGE >1-2.5 mm ²
---------------------------------	---

2.3 ± 0.15	-	PRESILVERED	3	CuFe2	3-927837-5	A
2.3 ± 0.15	-	PRESILVERED	3	CuSn4	3-927837-4	A
2.3 ± 0.15	-	PRETINNED		CuSn4	3-927837-2	A
2.3 ± 0.15	-	PRETINNED		CuFe2	3-927837-1	A
A	LP NO	FINISH		MATERIAL	PART NO.	REV

THIS DRAWING IS A CONTROLLED DOCUMENT.

DIMENSIONS: mm	TOLERANCES UNLESS OTHERWISE SPECIFIED: ±0.2 ±1°
MATERIAL -	FINISH -

DWN ATZMANN	06.01.94
CHK BARTOSCH	18.01.94
APVD Bleicher, M.	28.11.07
PRODUCT SPEC	108-18049-1
APPLICATION SPEC	114-18037
WEIGHT	-

STE TE Connectivity

NAME: STANDARD POWER TIMER KONTAKT (Gerade Tulpe)

SIZE: A3 CAGE CODE: 00779 DRAWING NO: 964203 RESTRICTED TO: -

Customer Drawing SCALE: 5:1 SHEET: 3 OF 10 REV: 12

THIS DRAWING IS UNPUBLISHED.

RELEASED FOR PUBLICATION

© COPYRIGHT -

ALL RIGHTS RESERVED.

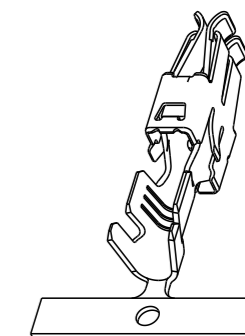
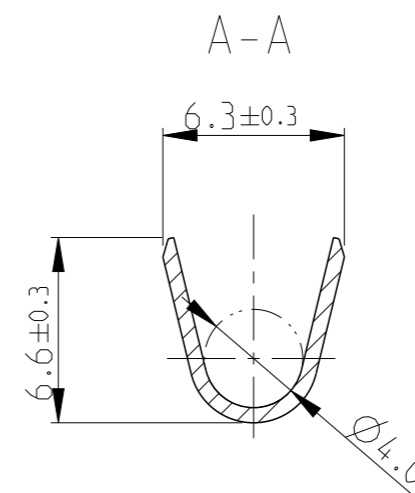
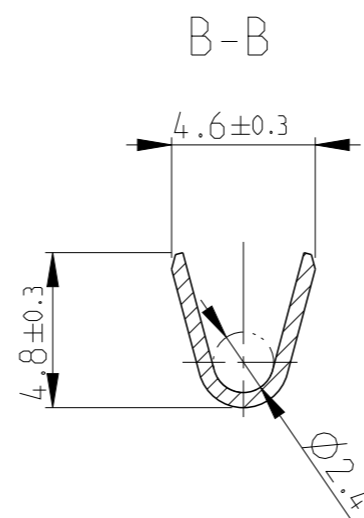
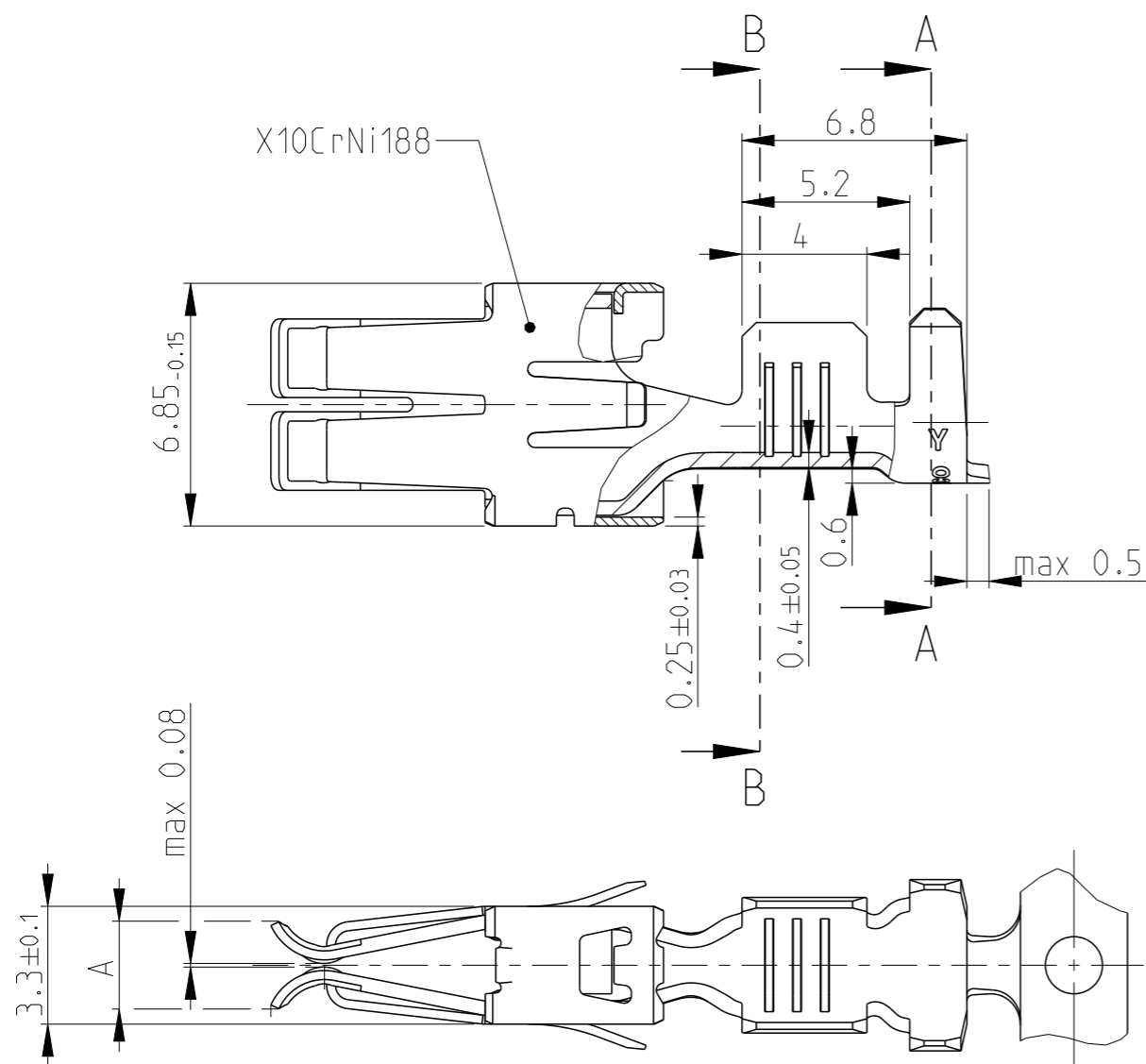
LOC
A1

DIST
-

REVISIONS

P	LTR	DESCRIPTION	DATE	DWN	APVD
1	SEE SHEET 1	rev_sym_1	rev_date_1	rev_dwn_1	rev_apvr_1
2	rev_desc_2	rev_sym_2	rev_date_2	rev_dwn_2	rev_apvr_2
3	rev_desc_3	rev_sym_3	rev_date_3	rev_dwn_3	rev_apvr_3
4	rev_desc_4	rev_sym_4	rev_date_4	rev_dwn_4	rev_apvr_4

ONLY FOR 3-927824-1 & 3-927824-2
OTHER DIMENSIONS SEE SHEET 1



2:1

INSUL. RANGE Ø3.3-4.5 mm	WIRE RANGE >2.5-4.0 >mm ²	2.3 ± 0.15	-	PRETINNED	CuSn4	3-927824-2	A
		2.3 ± 0.15	-	PRETINNED	CuFe2	3-927824-1	A
		A	LP NO	FINISH	MATERIAL	PART NO.	REV

THIS DRAWING IS A CONTROLLED DOCUMENT.

DWN ATZMANN 06.01.94

CHK BARTOSCH 18.01.94

APVD Bleicher, M. 28.11.07

PRODUCT SPEC 108-18049-1

APPLICATION SPEC 114-18037

WEIGHT -

Customer Drawing



TE Connectivity

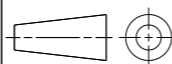
NAME STANDARD POWER TIMER KONTAKT (Gerade Tulpe)

SIZE CAGE CODE DRAWING NO RESTRICTED TO

A3 00779 C-964203

SCALE 5:1 SHEET 4 OF 10 REV 12

DIMENSIONS:
mm



TOLERANCES UNLESS OTHERWISE SPECIFIED:

0 PLC	±	±0.2
1 PLC	±	
2 PLC	±	
3 PLC	±	
4 PLC	±	±1°
ANGLES	±	
FINISH	-	

MATERIAL -

FINISH -

THIS DRAWING IS UNPUBLISHED.

RELEASED FOR PUBLICATION

© COPYRIGHT -

ALL RIGHTS RESERVED.

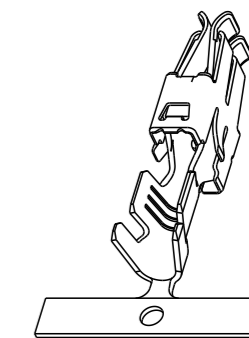
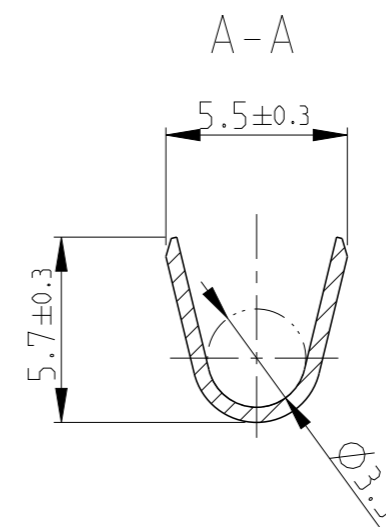
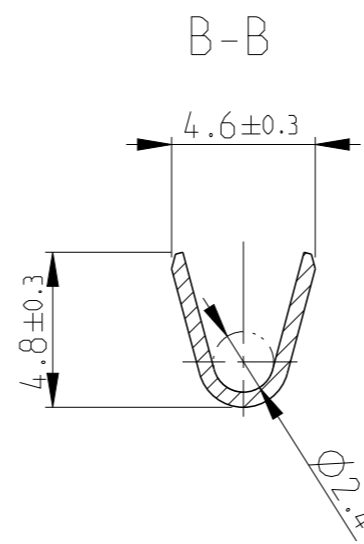
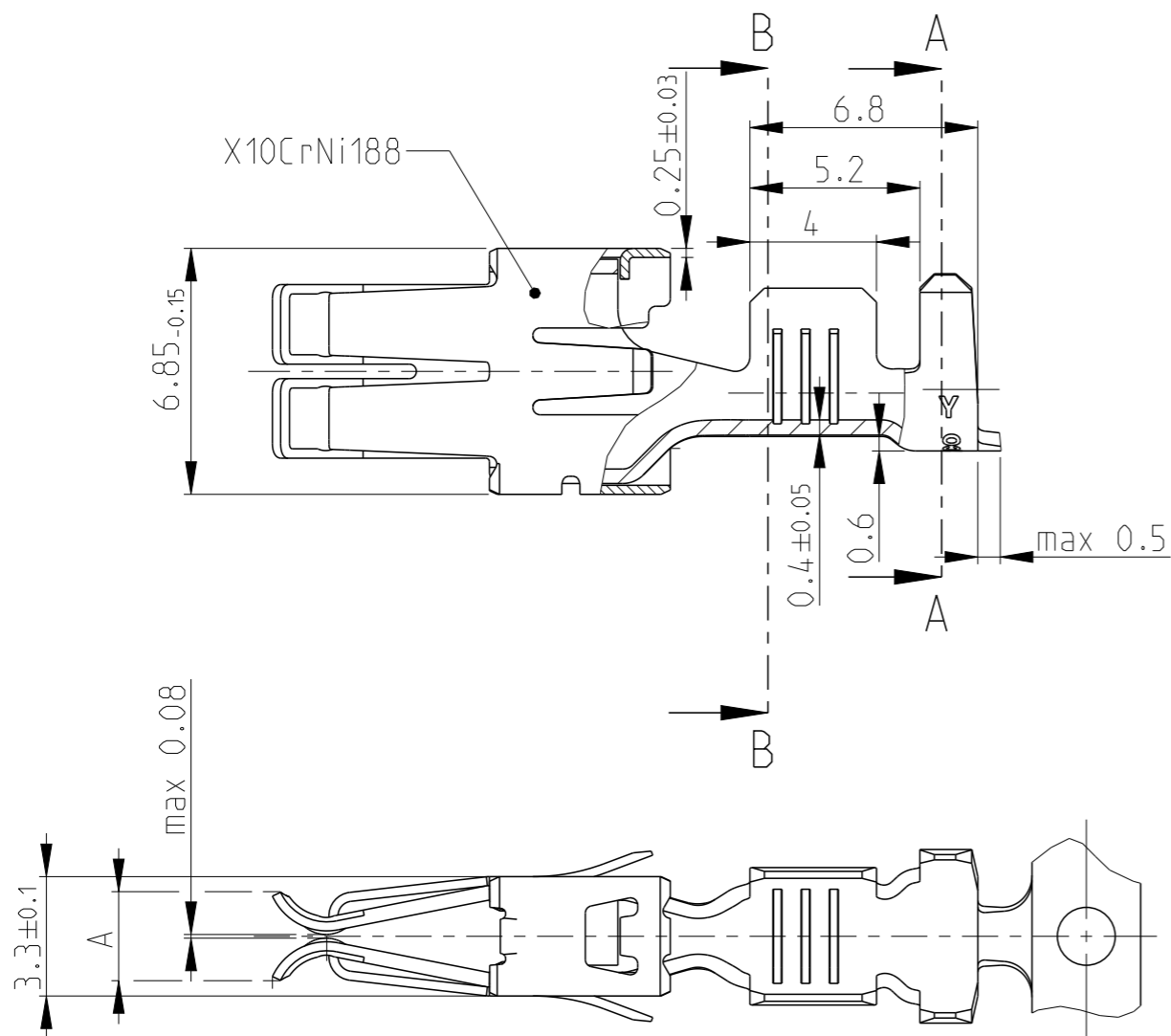
LOC
A1

DIST
-

REVISIONS

P	LTR	DESCRIPTION	DATE	DWN	APVD
rev_sym_1	SEE SHEET 1		rev_date_1	rev_dwn_1	rev_apvr_1
rev_sym_2	rev_desc_2		rev_date_2	rev_dwn_2	rev_apvr_2
rev_sym_3	rev_desc_3		rev_date_3	rev_dwn_3	rev_apvr_3
rev_sym_4	rev_desc_4		rev_date_4	rev_dwn_4	rev_apvr_4

ONLY FOR 3-927829-1 & 3-927829-5,
OTHER DIMENSIONS SEE SHEET 1



2:1

INSUL. RANGE Ø2.7-3.7 mm	WIRE RANGE >2.5-4.0 mm ²	2.3 ^{±0.15}	-	PRESILVERED \triangle_3	CuFe2	3-927829-5	A
		2.3 ^{±0.15}	-	PRETINNED	CuFe2	3-927829-1	A
		A	LP NO	FINISH	MATERIAL	PART NO.	REV

THIS DRAWING IS A CONTROLLED DOCUMENT.

DWN ATZMANN 06.01.94

CHK BARTOSCH 18.01.94

APVD Bleicher, M. 28.11.07

PRODUCT SPEC 108-18049-1

APPLICATION SPEC 114-18037

WEIGHT -

Customer Drawing



TE Connectivity

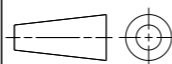
NAME
STANDARD POWER TIMER KONTAKT
(Gerade Tulpe)

SIZE CAGE CODE DRAWING NO RESTRICTED TO

A3 00779 C-964203

SCALE 5:1 SHEET 5 OF 10 REV 12

DIMENSIONS:
mm



TOLERANCES UNLESS OTHERWISE SPECIFIED:

0 PLC	±	±0.2
1 PLC	±	
2 PLC	±	
3 PLC	±	
4 PLC	±	±1°
ANGLES	±	
FINISH	-	

MATERIAL -

FINISH -

4

3

2

1

THIS DRAWING IS UNPUBLISHED.

RELEASED FOR PUBLICATION

© COPYRIGHT -

ALL RIGHTS RESERVED.

LOC

DIST

REVISIONS

A1

-

P	LTR	DESCRIPTION	DATE	DWN	APVD
rev_sym_1	1	SEE SHEET 1	rev_date_1	rev_dwn_1	1 apr 1
rev_sym_2	2	rev_desc_2	rev_date_2	rev_dwn_2	2 apr 2
rev_sym_3	3	rev_desc_3	rev_date_3	rev_dwn_3	3 apr 3
rev_sym_4	4	rev_desc_4	rev_date_4	rev_dwn_4	4 apr 4


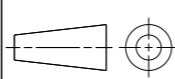
ONLY FOR 3-963709-1
OTHER DIMENSIONS SEE SHEET 1

Technical drawing of a contact component. The main view shows a side profile with dimensions: 6.85 \pm 0.15, 7.7, 5.6, 4.2, 0.25 \pm 0.03, 0.4 \pm 0.05, 0.6, and max 0.5. The material is X10CrNi188. Section lines A-A and B-B are indicated. A front view below shows a length of 20 \pm 0.5 and a diameter of 3.3 \pm 0.1. A maximum height of 0.08 is also noted.

Section view B-B showing a curved profile with a width of 5.2 \pm 0.3 and a height of 5.5 \pm 0.3. A fillet radius of ϕ 2.9 is indicated.

Section view A-A showing a curved profile with a width of 7.3 \pm 0.3 and a height of 7.6 \pm 0.3. A fillet radius of ϕ 4.5 is indicated.

2:1

INSUL. RANGE ϕ 4.0-5.2 mm	WIRE RANGE 4.0-6.0 mm ²	2.3 \pm 0.15	-	PRETINNED	CuFe2	3-963709-1	A
		A	LP NO	FINISH	MATERIAL	PART NO.	REV
THIS DRAWING IS A CONTROLLED DOCUMENT.		DWN ATZMANN	06.01.94	 TE Connectivity			
DIMENSIONS: mm		CHK BARTOSCH	18.01.94				
TOLERANCES UNLESS OTHERWISE SPECIFIED:		APVD Bleicher, M.	28.11.07	NAME STANDARD POWER TIMER KONTAKT (Gerade Tulpe)			
		PRODUCT SPEC 108-18049-1		SIZE A3			
MATERIAL -		FINISH -		APPLICATION SPEC 114-18037		CAGE CODE 00779	
		WEIGHT -		DRAWING NO C=964203		RESTRICTED TO -	
Customer Drawing				SCALE 5:1	SHEET 6 OF 10		REV 12

1470-19 (3/11)

THIS DRAWING IS UNPUBLISHED.

RELEASED FOR PUBLICATION

© COPYRIGHT -

ALL RIGHTS RESERVED.

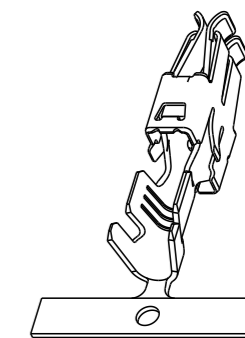
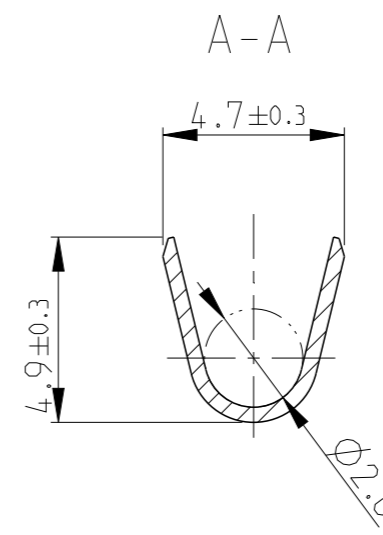
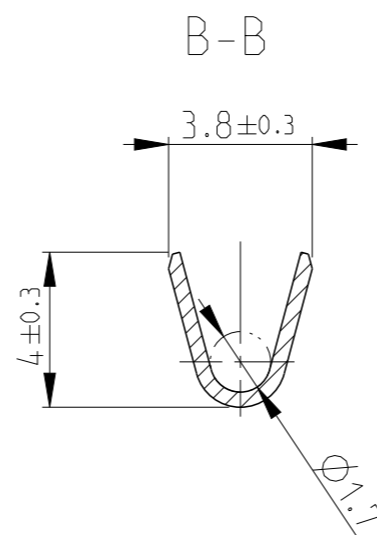
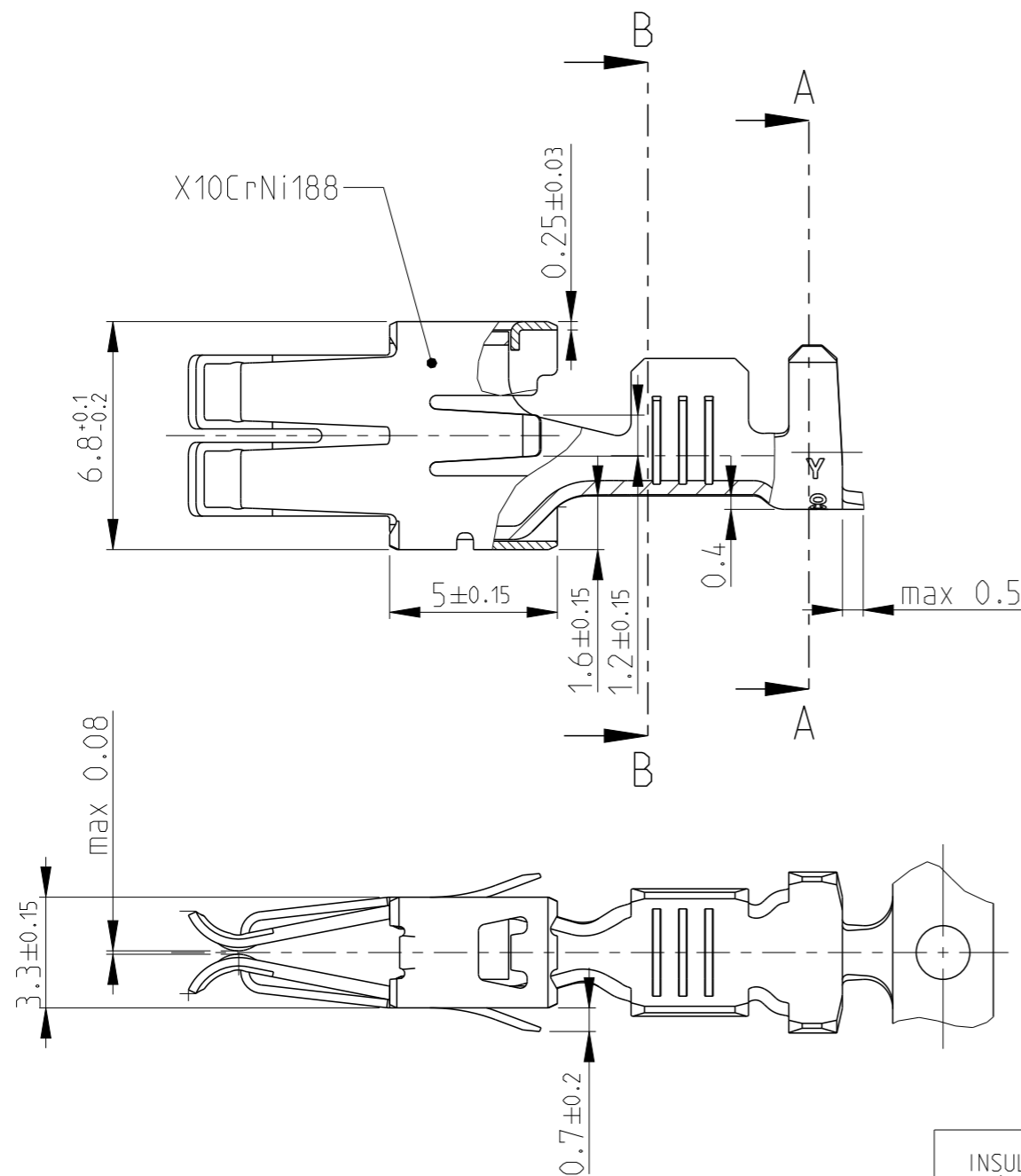
LOC
A1

DIST
-

REVISIONS

P	LTR	DESCRIPTION	DATE	DWN	APVD
rev_sym_1	SEE SHEET 1		rev_date_1	rev_dwn_1	1appr_1
rev_sym_2	rev_desc_2		rev_date_2	rev_dwn_2	2appr_2
rev_sym_3	rev_desc_3		rev_date_3	rev_dwn_3	3appr_3
rev_sym_4	rev_desc_4		rev_date_4	rev_dwn_4	4appr_4

ONLY FOR 3-964326-1
OTHER DIMENSIONS SEE SHEET 1



2:1

INSUL. RANGE Ø2.2-3.0 mm	WIRE RANGE >1.0-2.5 mm ²
--------------------------------	---

THIS DRAWING IS A CONTROLLED DOCUMENT.

DIMENSIONS: mm	TOLERANCES UNLESS OTHERWISE SPECIFIED: ±0.2
	0 PLC ± 1 PLC ± 2 PLC ± 3 PLC ± 4 PLC ± ANGLES ±1°
MATERIAL -	FINISH -

-	PRETINNED	CuFe2	3-964326-1	A
LP NO	FINISH	MATERIAL	PART NO.	REV
DWN ATZMANN 06.01.94	CHK BARTOSCH 18.01.94	APVD Bleicher, M. 28.11.07	NAME STANDARD POWER TIMER KONTAKT (Gerade Tulpe)	
PRODUCT SPEC 108-18049-1	APPLICATION SPEC 114-18037	WEIGHT -	SIZE A3	CAGE CODE 00779
Customer Drawing		SCALE 5:1	DRAWING NO C-964203	RESTRICTED TO -
		SHEET 7	OF 10	REV 12



THIS DRAWING IS UNPUBLISHED.

RELEASED FOR PUBLICATION

© COPYRIGHT -

ALL RIGHTS RESERVED.

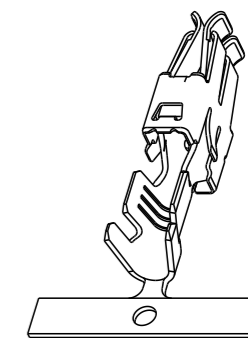
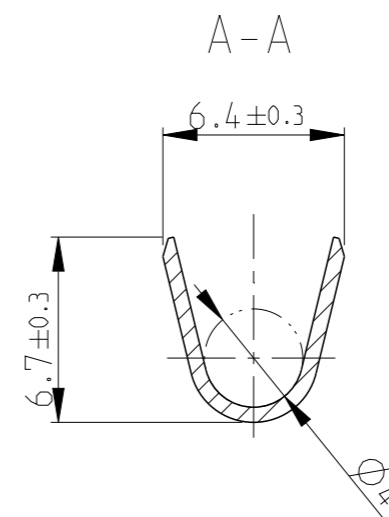
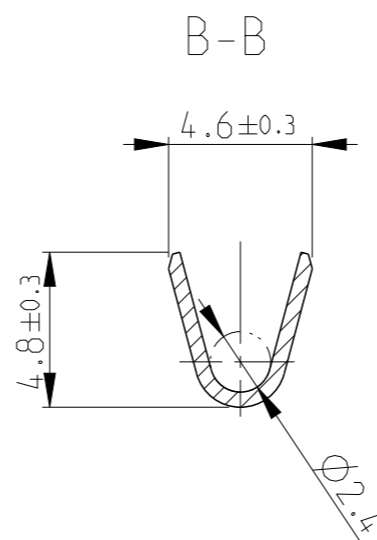
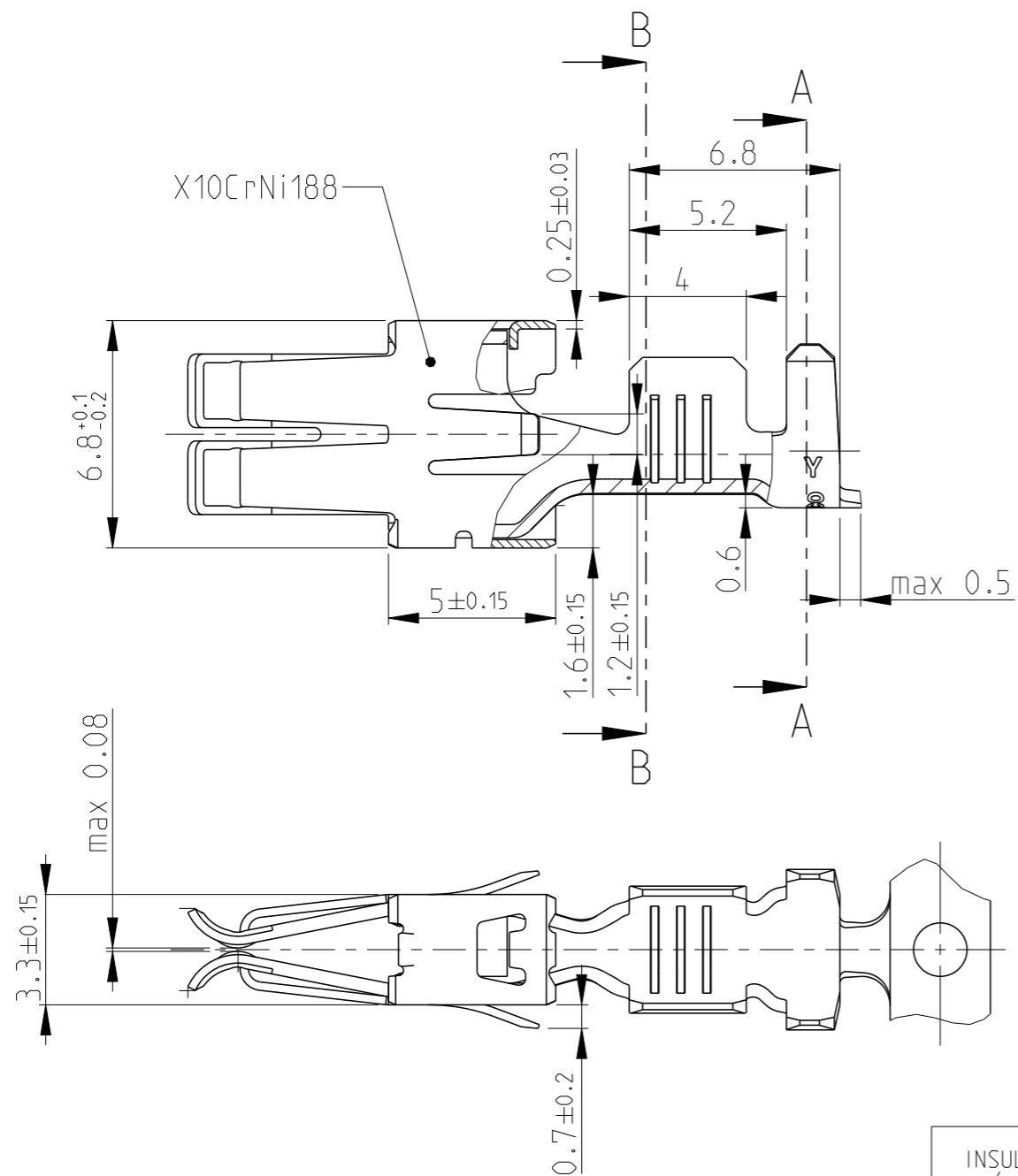
LOC
A1

DIST
-

REVISIONS

P	LTR	DESCRIPTION	DATE	DWN	APVD
rev_sym_1	16	SEE SHEET 1	rev_date_1	rev_dwn_1	1appr_1
rev_sym_2	rev_desc_2		rev_date_2	rev_dwn_2	2appr_2
rev_sym_3	rev_desc_3		rev_date_3	rev_dwn_3	3appr_3
rev_sym_4	rev_desc_4		rev_date_4	rev_dwn_4	4appr_4

ONLY FOR 3-964328-1
OTHER DIMENSIONS SEE SHEET 1




2:1

INSUL. RANGE Ø 3.3-4.5 mm	WIRE RANGE >2.5-4.0 mm ²
---------------------------------	---

THIS DRAWING IS A CONTROLLED DOCUMENT.

DIMENSIONS: mm	TOLERANCES UNLESS OTHERWISE SPECIFIED: ±0.2 ±1°
MATERIAL -	FINISH -

-	PRETINNED	CuFe2	3-964328-1	A
LP NO	FINISH	MATERIAL	PART NO.	REV

DWN ATZMANN 06.01.94	CHK BARTOSCH 18.01.94	APVD Bleicher, M. 28.11.07	 TE Connectivity	
PRODUCT SPEC 108-18049-1			NAME STANDARD POWER TIMER KONTAKT (Gerade Tulpe)	
APPLICATION SPEC 114-18037			SIZE A3	RESTRICTED TO -
WEIGHT -			CAGE CODE 00779	DRAWING NO C-964203
Customer Drawing			SCALE 5:1	SHEET 8 OF 10 REV 12

THIS DRAWING IS UNPUBLISHED.

RELEASED FOR PUBLICATION

© COPYRIGHT -

ALL RIGHTS RESERVED.

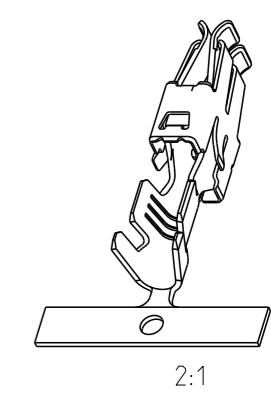
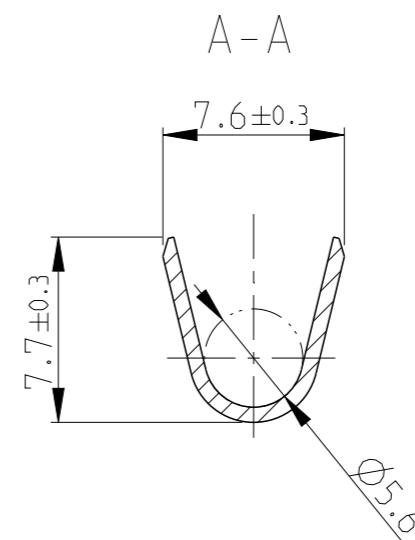
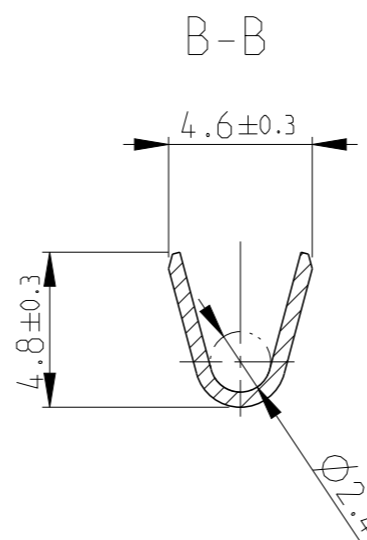
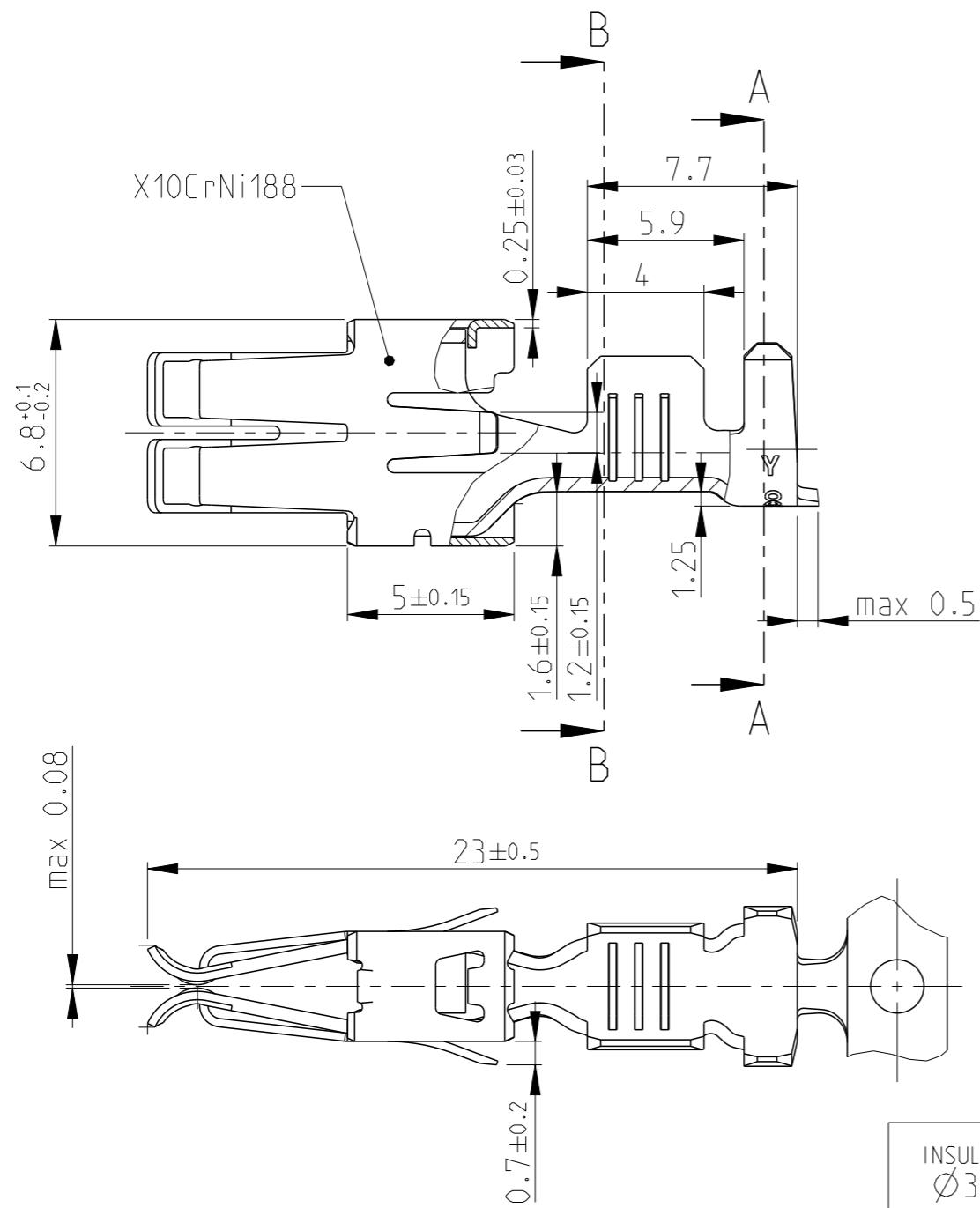
LOC
A1

DIST
-

REVISIONS

P	LTR	DESCRIPTION	DATE	DWN	APVD
rev_sym_1	SEE SHEET 1		rev_date_1	rev_dwn_1	rev_apvr_1
rev_sym_2	rev_desc_2		rev_date_2	rev_dwn_2	rev_apvr_2
rev_sym_3	rev_desc_3		rev_date_3	rev_dwn_3	rev_apvr_3
rev_sym_4	rev_desc_4		rev_date_4	rev_dwn_4	rev_apvr_4

ONLY FOR 3-968037-2
OTHER DIMENSIONS SEE SHEET 1



INSUL. RANGE Ø3.4-3.7 mm	WIRE RANGE >2.5-4.0 mm ²
--------------------------------	---

THIS DRAWING IS A CONTROLLED DOCUMENT.

DIMENSIONS: mm	TOLERANCES UNLESS OTHERWISE SPECIFIED: ±0.2
	0 PLC ± 1 PLC ± 2 PLC ± 3 PLC ± 4 PLC ± ANGLES ±1°
MATERIAL -	FINISH -

-	PRETINNED	CuSn4	3-968037-2	A
LP NO	FINISH	MATERIAL	PART NO.	REV
DWN ATZMANN	06.01.94	TE Connectivity STANDARD POWER TIMER KONTAKT (Gerade Tulpe)		
CHK BARTOSCH	18.01.94			
APVD Bleicher, M.	28.11.07	NAME		
PRODUCT SPEC 108-18049-1		SIZE	CAGE CODE	DRAWING NO
APPLICATION SPEC 114-18037		A3	00779	964203
WEIGHT -		RESTRICTED TO		
Customer Drawing	SCALE 5:1	SHEET 9	OF 10	REV 12

THIS DRAWING IS UNPUBLISHED.

RELEASED FOR PUBLICATION

© COPYRIGHT -

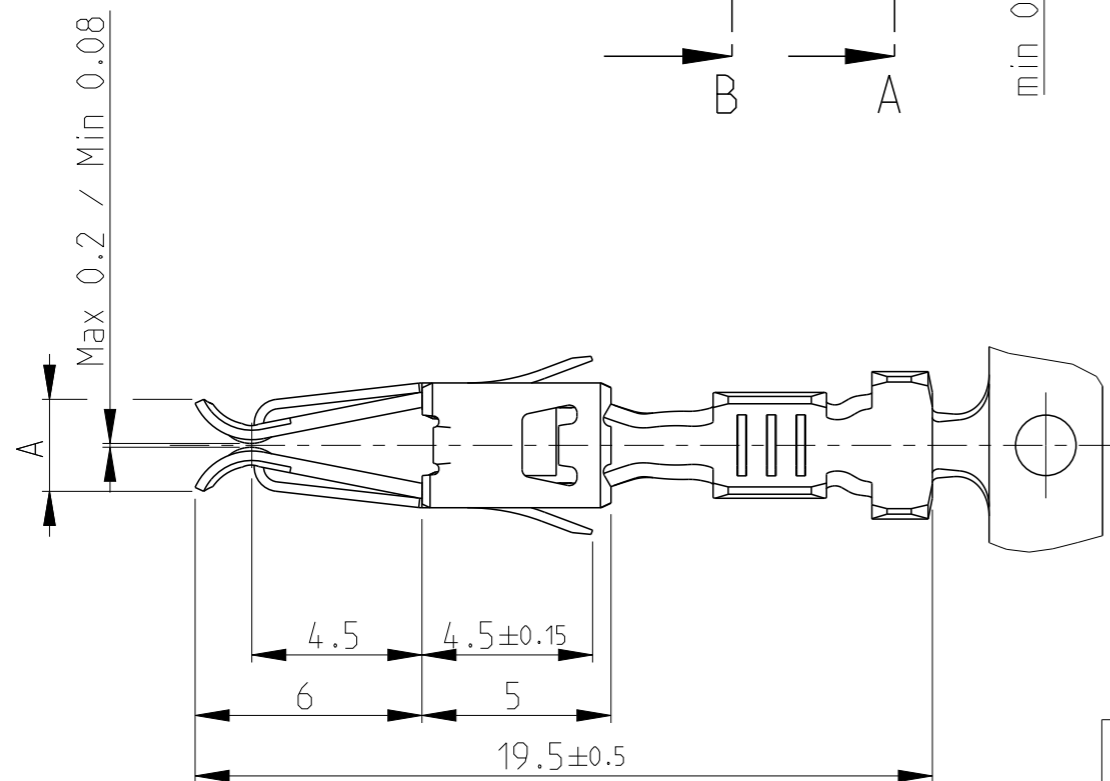
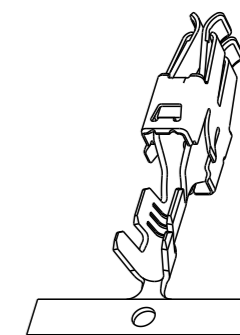
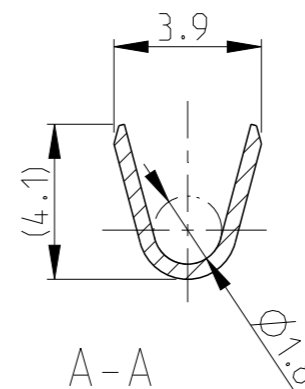
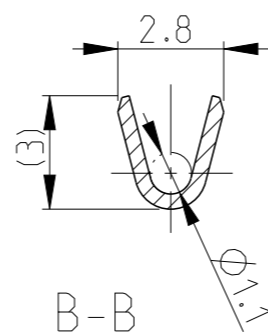
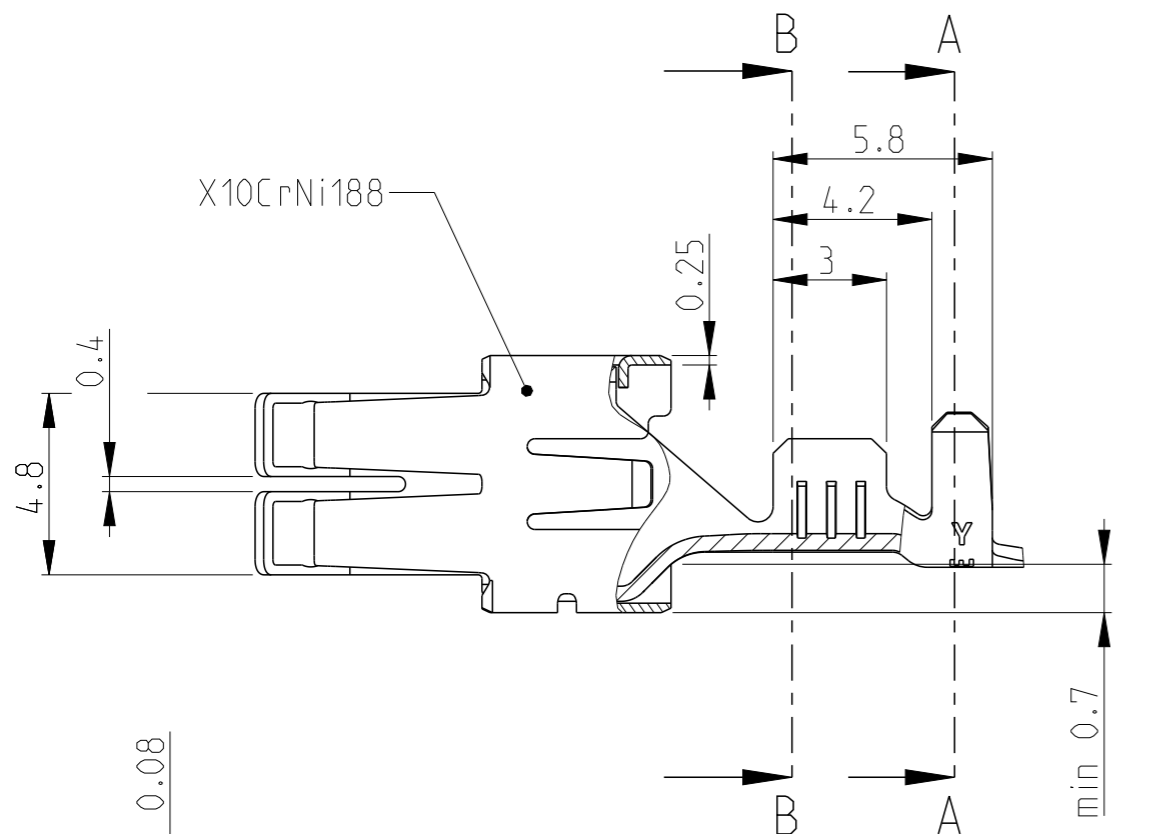
ALL RIGHTS RESERVED.

LOC
A1

DIST
-

REVISIONS

P	LTR	DESCRIPTION	DATE	DWN	APVD
-	-	SEE SHEET 1	-	-	-



INSUL. RANGE Ø 1.4-2.3 mm	WIRE RANGE 0.5-1.0 mm ²
---------------------------------	--

2.5	vorversilbert/PRESILVERED 1-1.5 µm	CuSn4	△ 2 1-964203-4
A	FINISH	MATERIAL	PART NO.

THIS DRAWING IS A CONTROLLED DOCUMENT.

DWN ATZMANN 06.01.94

CHK BARTOSCH 18.01.94

APVD Bleicher, M. 28.11.07

PRODUCT SPEC 108-18049-1

APPLICATION SPEC 114-18037

WEIGHT -

Customer Drawing

STE TE Connectivity

NAME STANDARD POWER TIMER KONTAKT (Gerade Tulpe)

SIZE CAGE CODE DRAWING NO RESTRICTED TO

A3 00779 C-964203

SCALE 5:1 SHEET 10 OF 10 REV 12

DIMENSIONS: mm	TOLERANCES UNLESS OTHERWISE SPECIFIED: ±0.2
	0 PLC ±
	1 PLC ±
	2 PLC ±
	3 PLC ±
	4 PLC ±
	ANGLES ±1°
MATERIAL -	FINISH -