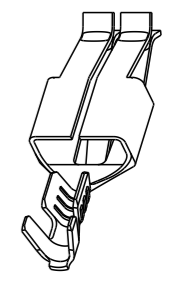
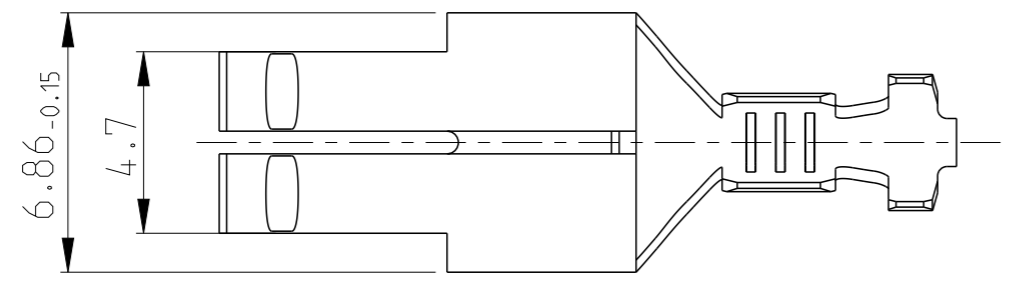
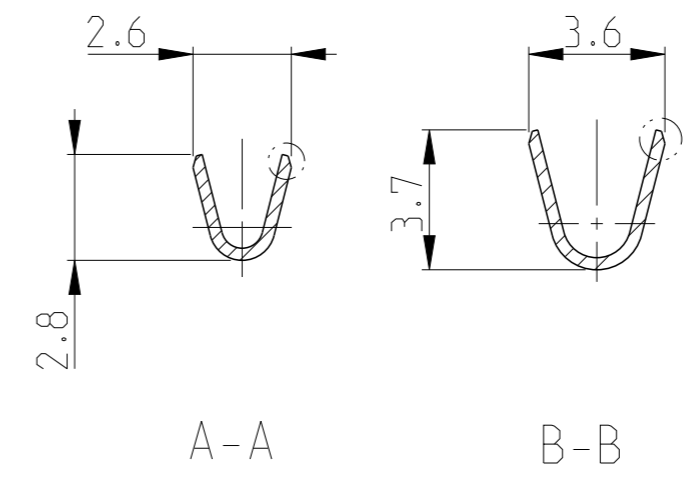
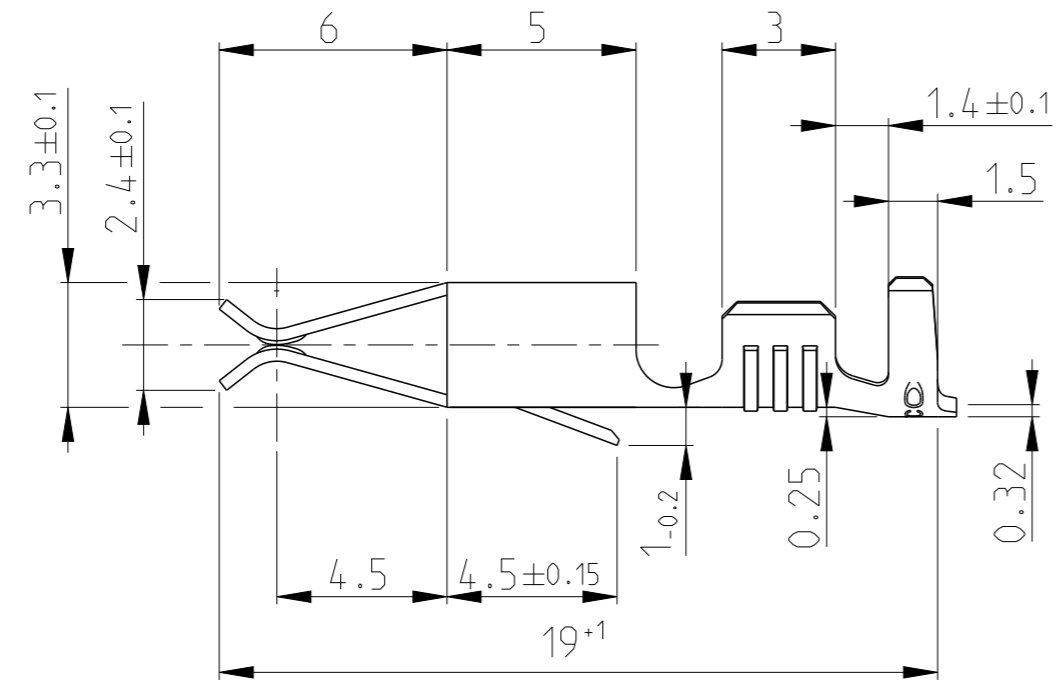


THIS DRAWING IS UNPUBLISHED. RELEASED FOR PUBLICATION 20
 © COPYRIGHT 20 BY - ALL RIGHTS RESERVED.

LOC	DIST	REVISIONS				
P	LTR	DESCRIPTION	DATE	DWN	APVD	
	E	SEE ECR-11-010607	04APR2011	JS	LB	
	E1	ECR-14-007191	21JUL2014	SK	JS	
	E2	OBSOLETE PN 927847-2	29SEP2023	KMD	SK	



2:1

CROSS-SECTION IN mm ² Leitungsquerschnitt in mm ²		0.35	0.50	0.75	1.00	1.50	2.00
SINGLE CONNECTION Einzelanschlag		X	X				
	0.35	X	X				
	0.50	X					
	0.75						
	1.00						
	1.50						
	2.00						

Note
 1 OBSOLETE

1 927848-3	TIN (vorverzinnt)	CuFe2	1 927847-3	E
1 927848-2	TIN (vorverzinnt)	CuSn4	1 927847-2	E
927848-1	TIN (vorverzinnt)	CuZn30	927847-1	E
LOOSE PIECE	FINISH	MATERIAL	PART NO.	REV.

THIS DRAWING IS A CONTROLLED DOCUMENT.		DWN J. SALO	04-Apr-11	TE Connectivity	
DIMENSIONS: mm		CHK R. SOLE	12APR2011		
TOLERANCES UNLESS OTHERWISE SPECIFIED:		APVD L. BATILLO	12APR2011	NAME STANDARD TIMER CONTACT	
		PRODUCT SPEC		-	
0 PLC ± 1 PLC ± 2 PLC ±0.2 3 PLC ± 4 PLC ± ANGLES ±1°		APPLICATION SPEC		-	
MATERIAL -		WEIGHT -		SIZE A3	CAGE CODE 00779
		Customer Drawing		DRAWING NO C-927847	RESTRICTED TO -
		SCALE 5:1		SHEET 1	OF 1
				REV E2	