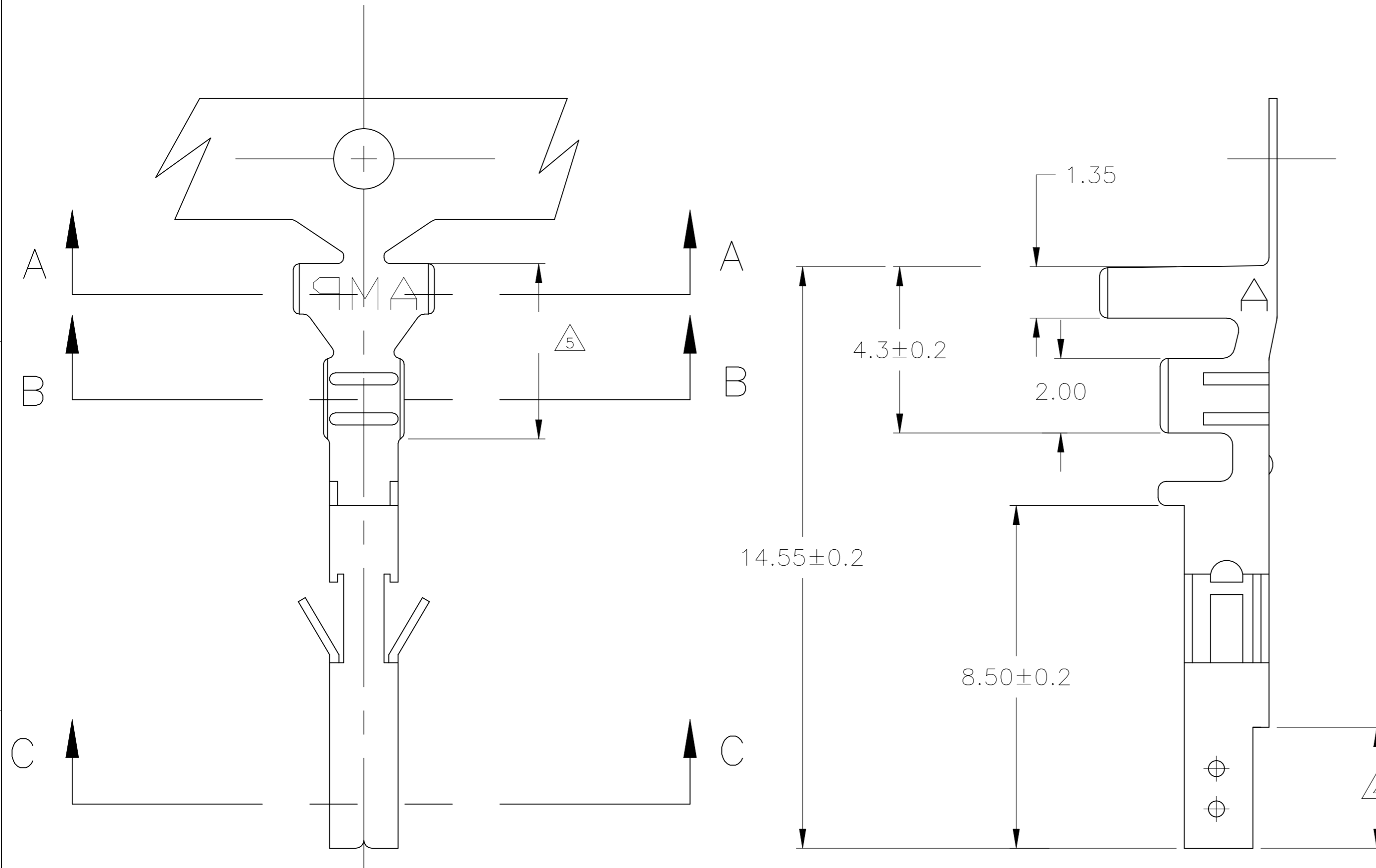
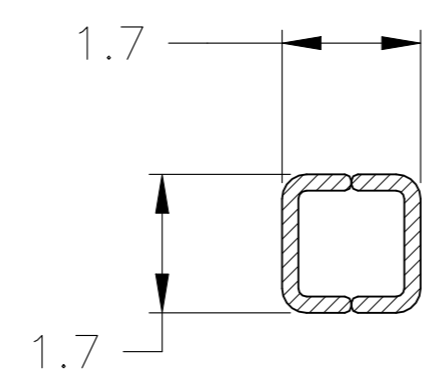
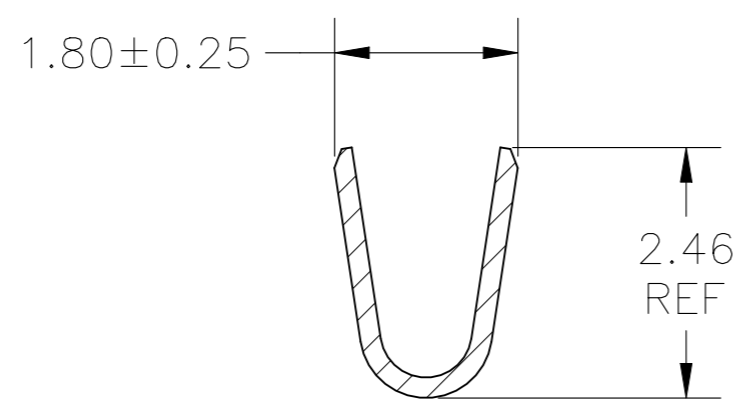
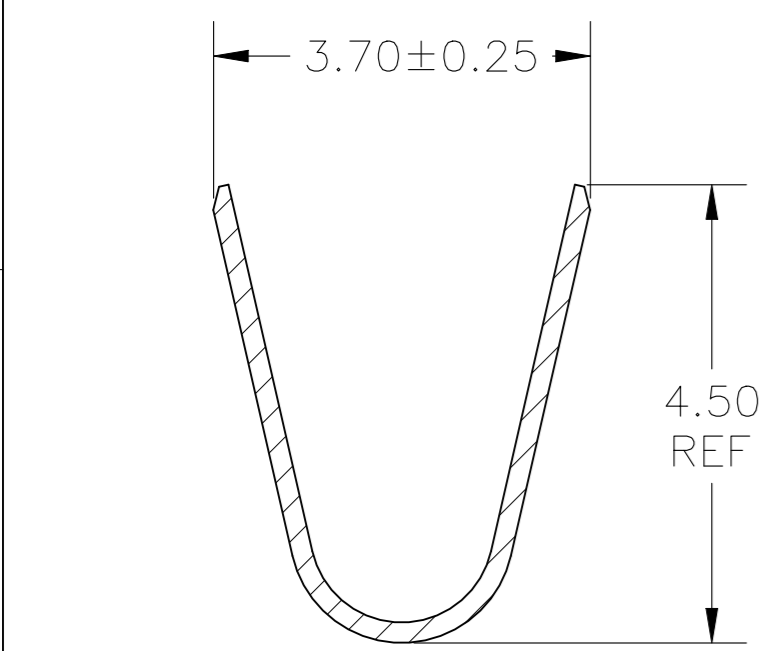


REVISIONS					
P	LTR	DESCRIPTION	DATE	DWN	APVD
J		REVISED PER ECR-23-173068	05DEC2023	P.C	D.Z



- 1 WIRE RANGE: 0.3–0.82mm<sup>2</sup> (22–18 AWG).
- 2 INSULATION RANGE: 1.50 – 3.10 DIA.
- 3 FINISH: 1.27µm MIN NICKEL ALL OVER
- 4 FINISH: 0.76µm MIN GOLD ON INNER SURFACE, PERMITTED ON OUTER SURFACE.
- 5 FINISH: 2.54µm MIN TIN ON ALL SURFACES IN THIS AREA.
- 6 FINISH: 2.54µm MINIMUM PRE-TIN OVERALL (BEFORE AND AFTER STAMPING)



SECTION B-B

SECTION C-C

SECTION A-A

	LUBRICANT	794956-1	794956-5
5	GOLD 3 4	PHOS. BRZ.	794956-4
	PRE-TIN 6	PHOS. BRZ.	794956-3
5	GOLD 3 4	BRASS	794956-2
	PRE-TIN 6	BRASS	794956-1
	FINISH:	MATERIAL:	PART NO.

THIS DRAWING IS A CONTROLLED DOCUMENT.		DWN S. HAMM 10-SEP-2001	TE Connectivity	
DIMENSIONS: MM [INCHES]		CHK D. COLEY 10-SEP-2001		
TOLERANCES UNLESS OTHERWISE SPECIFIED:		APVD D. COLEY 10-SEP-2001	NAME	
0 PLC ±		PRODUCT SPEC 108-2112	TERMINAL SOCKET VAL-U-LOK (TM)	
1 PLC ± 0.25		APPLICATION SPEC 114-13172	SIZE A2	CAGE CODE 00779
2 PLC ± 0.15		WEIGHT -	DRAWING NO C=794956	RESTRICTED TO -
3 PLC ± -		CUSTOMER DRAWING	SCALE NTS	SHEET 1 of 1
4 PLC ±			REV J	
ANGLES ±				
FINISH				