

C. Westin 5-26-92  
 APPROVED BY/DATE  
 REV

**SAFETY ORGANIZATION(S).**

THIS FILTER HAS BEEN FORMALLY RECOGNIZED, CERTIFIED OR APPROVED BY THE LISTED AGENCY, THEREFORE, ALL TEST/REQUIREMENTS SPECIFIED IN THE LATEST REVISION OF THE FOLLOWING AGENCY STANDARDS HAVE BEEN MET.

UL RECOGNIZED  
 CSA CERTIFIED  
 VDE APPROVED  
 SEV APPROVED

UL 1283  
 CSA 22-2, NO. 0, 0.4, 8  
 VDE 565-3  
 SEV 1055/TP1977/5.1.1

**OPERATING SPECIFICATIONS.**

LINE VOLTAGE/CURRENT, 6 AMP., 120/250 VAC  
 5 AMP./40°C, 250 VAC  
 LINE FREQUENCY, 50-60Hz  
 MAX. CASE RISE  $\theta$  RATED CURRENT, 40°C  
 MAX. LEAKAGE CURRENT, EACH .25mA at 120V 60 Hz  
 LINE TO GROUND .40 mA at 250V 50 Hz  
 OPERATING AMBIENT TEMP. RANGE, -10°C TO +40°C  $\theta$  RATED CURRENT, I<sub>r</sub>  
 IN AN AMBIENT, T<sub>o</sub>, HIGHER THAN 40°C, THE MAXIMUM OPERATING CURRENT, I<sub>o</sub>, IS AS FOLLOWS:  
 $I_o = I_r \sqrt{\frac{85 - T_o}{45}}$

**RELIABILITY SPECIFICATIONS.**

STORAGE TEMPERATURE, -40°C TO +85°C  
 HUMIDITY, 21 DAYS @ 40°C 95% RH  
 CURRENT OVERLOAD TEST, 5 TIMES RATED CURRENT FOR 8 SECONDS

**TEST SPECIFICATIONS.**

INDUCTANCE, 17.46 mH NOMINAL  
 CAPACITANCE; (MEASURED @ 1 KHz, 0.25 VAC MAX., 25°C  $\pm$ 1°C)  
 LINE TO GROUND, .0056 $\mu$ F  $\pm$ 20%  
 LINE TO LINE, .811 $\mu$ F  $\pm$ 20%  
 DISCHARGE RESISTOR, 330 K $\Omega$   
 LINE/GROUND AND LINE/LINE 6000 M $\Omega$  (MIN) AT 100 VDC  
 INSULATION RESISTANCE 20°C AND 50% RH  
 (W/O DISCHARGE RESISTOR)

**RECOMMENDED RECEIVING INSPECTION HIPOIT.**

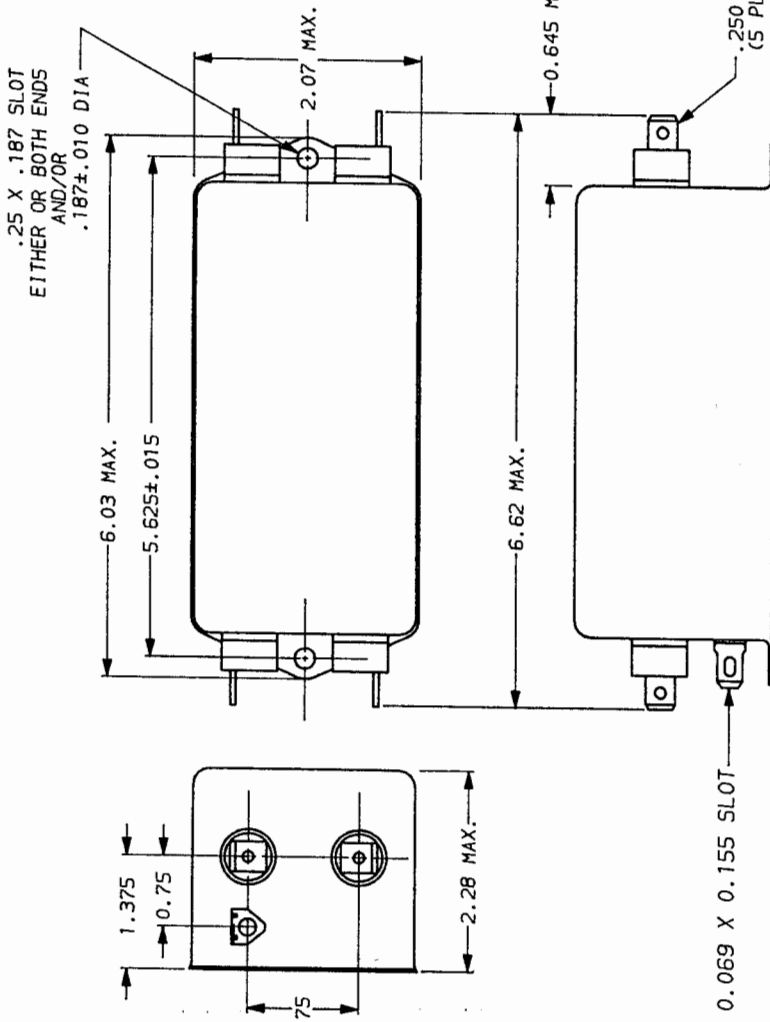
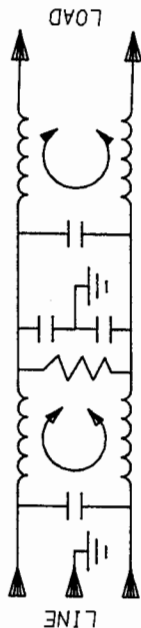
LINES TO GROUND, 2250 VDC FOR 1 MINUTE  
 LINE TO LINE, 1450 VDC FOR 1 MINUTE

**FILTER APPROVAL.**

THE BEST WAY TO SELECT AND QUALIFY A FILTER IS FOR YOUR ENGINEERING TO TEST THE UNIT IN YOUR EQUIPMENT.

50 $\Omega$ - 50 $\Omega$ (MINIMUM) INSERTION LOSS									
FREQUENCY MHz	.01	.04	.05	.06	.15	.5	10	20	30
COMMON	10	1	15	22	60	65	65	38	35
DIFF. dB	1	2	3	3	30	65	65	35	35

This document is proprietary to CORCOM, INC. and is not to be reproduced nor used for manufacturing purposes except on CORCOM's order or prior written consent.



POWER LINE FILTER

SCALE NTS  
 DATE 9-12-89  
 DRAWN BY TDL  
 ORIGINATOR CM  
 DRG. NO. 6EP1.06  
 REV. 1.06

FINISH: AS SUPPLIED

AS SUPPLIED