

4

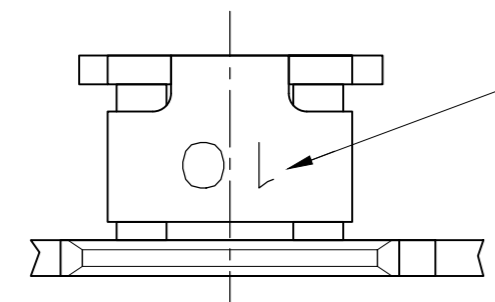
3

2

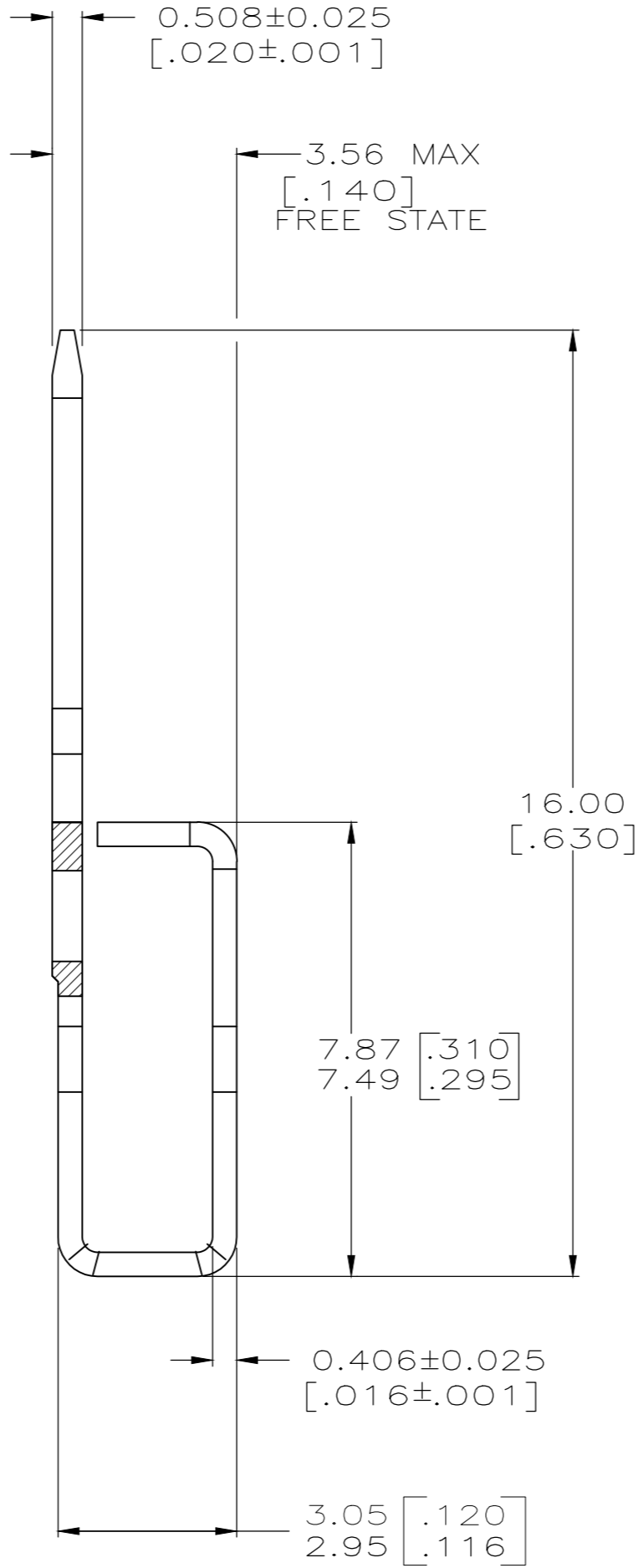
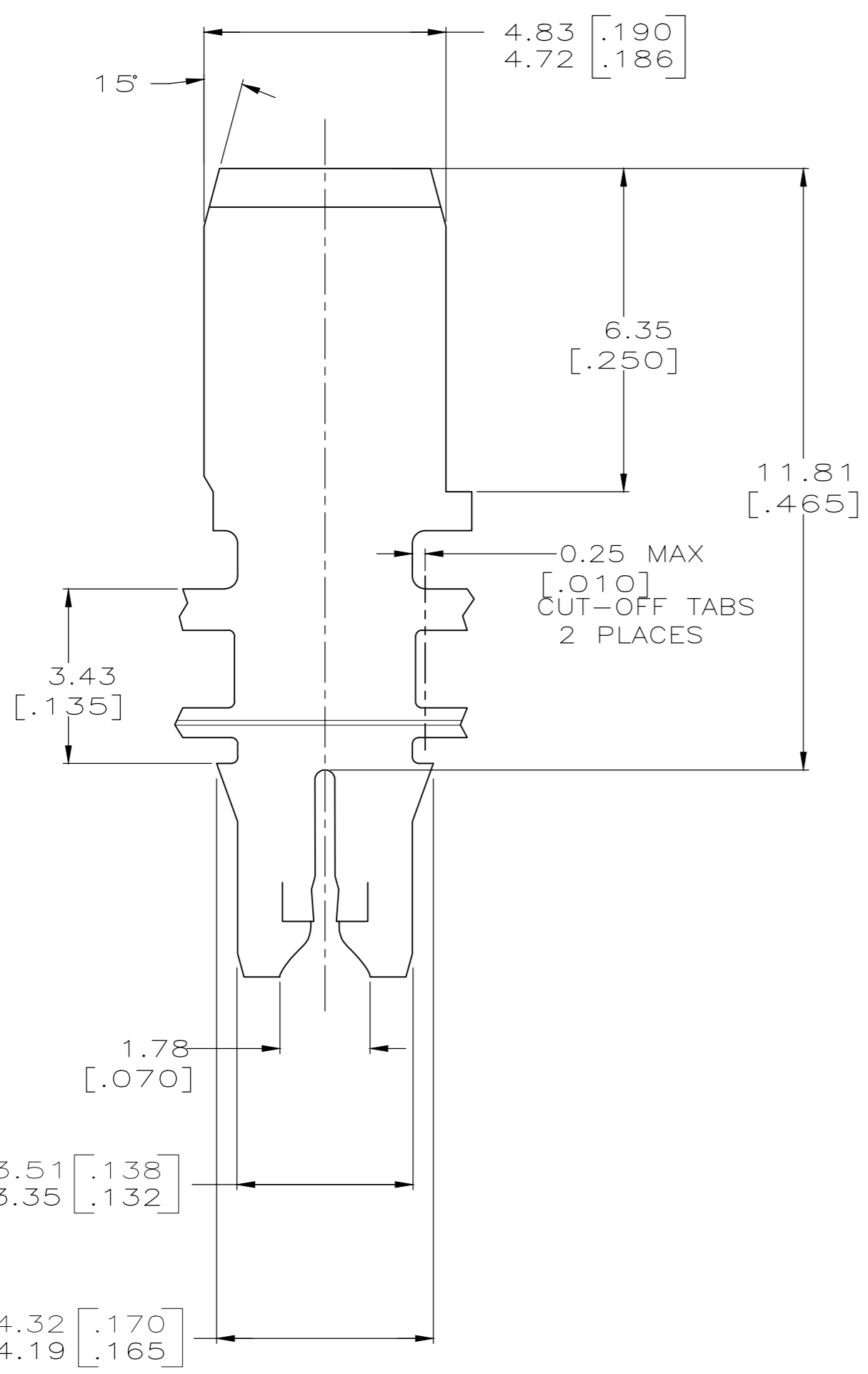
1

THIS DRAWING IS UNPUBLISHED. RELEASED FOR PUBLICATION .19
 © COPYRIGHT 19 BY AMP INCORPORATED. ALL RIGHTS RESERVED.

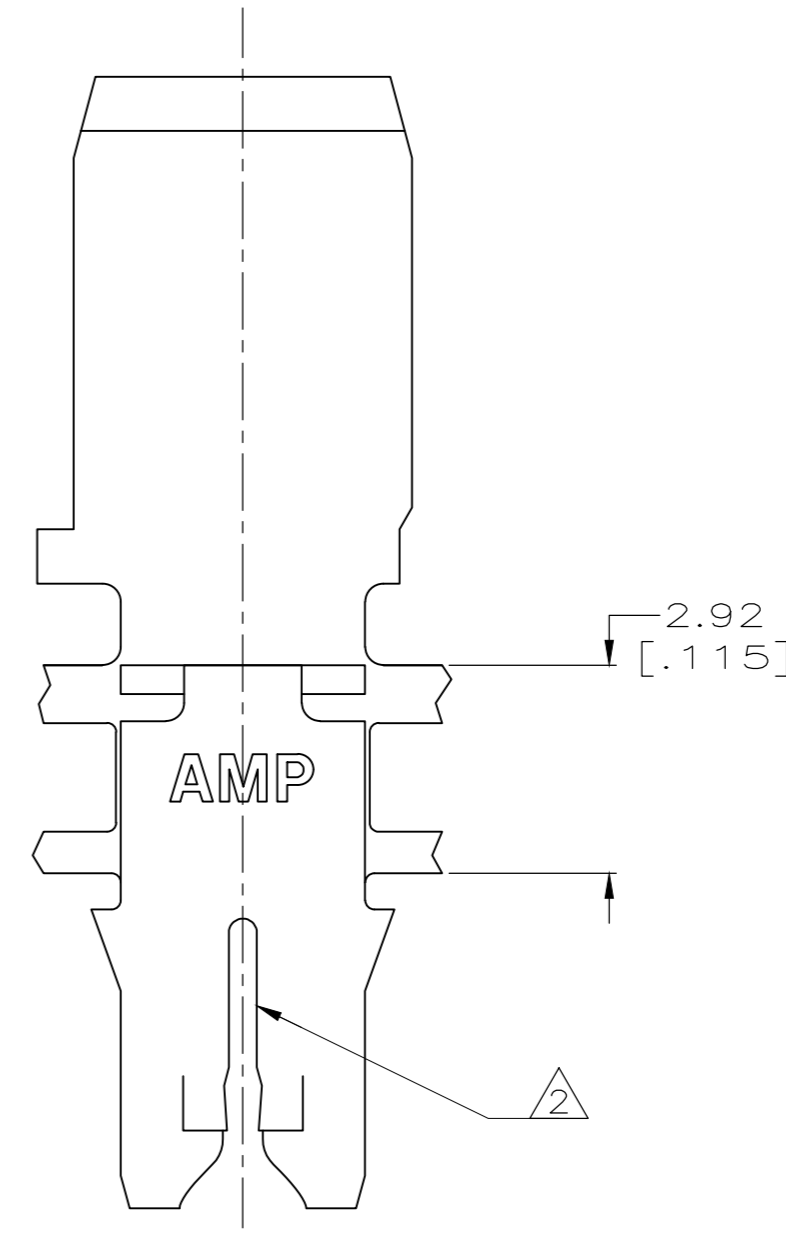
LOC		DIST		REVISIONS			DATE	DWN	APVD
P	LTR	DESCRIPTION							
AF	50	H1		REVISED PER ECR-18-006427			14MAY2018	BW	SV



IDENTIFICATION NUMBER 10
FOR MAGNET WIRE RANGE



- 1 CONTINUOUS STRIP ON REELS (SPlice FREE) WITH TERMINALS LOCATED ON 5.59±0.08 [.220±.003] CENTERS.
- 2 SLOT TERMINATES A SINGLE OR DOUBLE MAGNET WIRE ONLY. COPPER RANGE: 0.36-0.57mm [#27-#23] AWG. ALUMINIUM RANGE: 0.51-0.64mm [#24-#22] AWG. ALUMINIUM WIRE RANGE IS APPLICABLE FOR POST TIN PLATED PART NOS ONLY.
- 3 AFTER INSERTION INTO PLASTIC HOLDER TAB PORTION MUST BE BENT OVER 45° TO 90° OR POTTED-IN TO PREVENT PULL-OUT WHEN MATING RECEPTACLE IS DISCONNECTED.
- 4 SPECIAL LABELING.
- 5 PRELIMINARY - NOT FOR PRODUCTION.



OBSOLETE	STANDARD	63461-3
	REVERSE	63461-2
	STANDARD	63461-1
	REELING	PART NUMBER

THIS DRAWING IS A CONTROLLED DOCUMENT.		DWN 24JUL98 MICHAEL S. FEHER	TE CONNECTIVITY	
DIMENSIONS: mm [INCHES]		CHK 24JUL98 JEFF R. RUTH	APVD 24JUL98 KURT A. RANDOLPH	
TOLERANCES UNLESS OTHERWISE SPECIFIED:		NAME 108-2012		
0 PLC ±-	1 PLC ±-	PRODUCT SPEC		
2 PLC ±0.25[.010]	3 PLC ±-	APPLICATION SPEC		
4 PLC ±-	ANGLES ±1°	114-2046		
MATERIAL 4M PRE-MILLED BRASS	FINISH 0.002032[.000080] MIN TIN	WEIGHT	SIZE A2	CAGE CODE 00779
CUSTOMER DRAWING		DRAWING NO 63461	RESTRICTED TO	
SCALE 10:1		SHEET 1 OF 1	REV H1	

63461