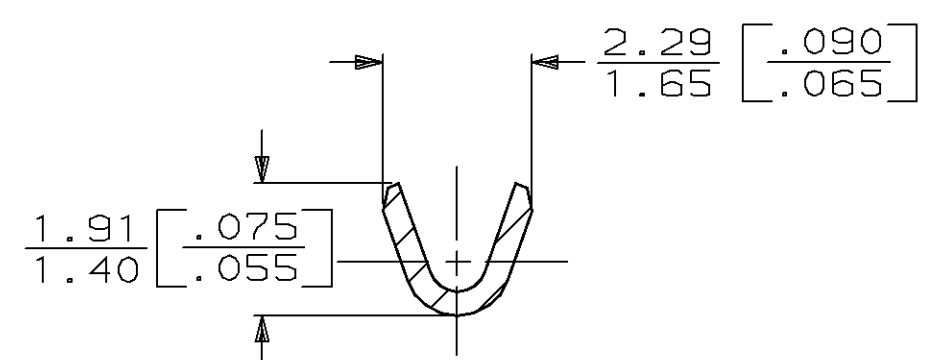
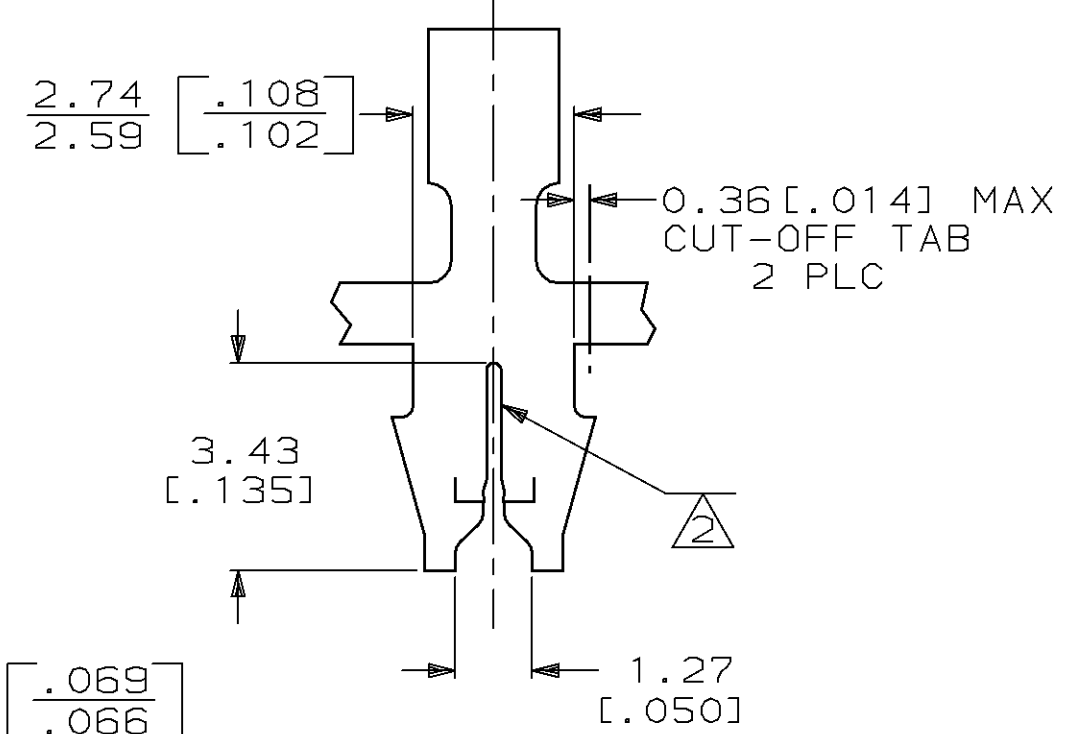
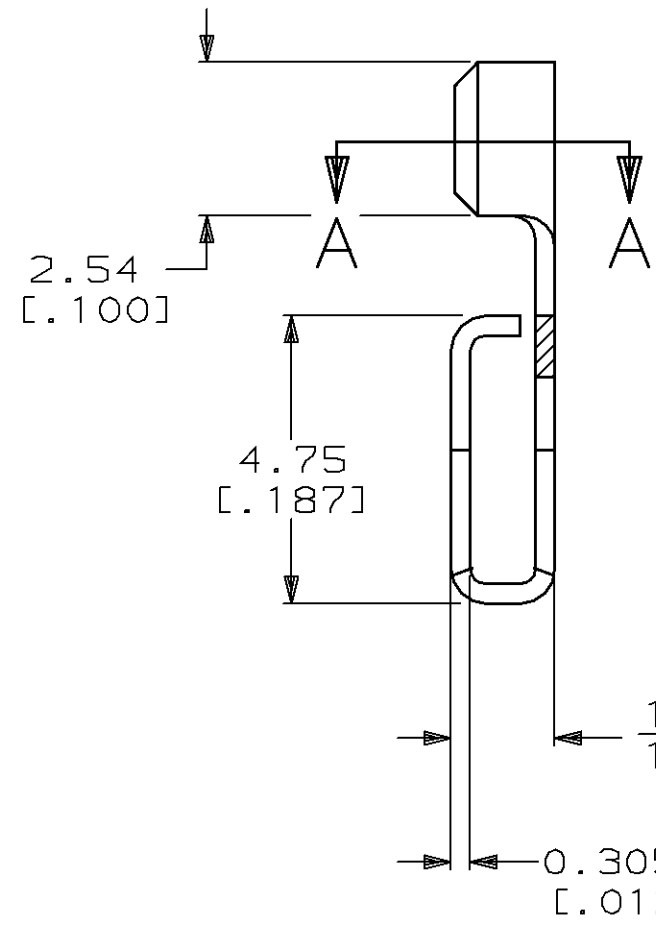
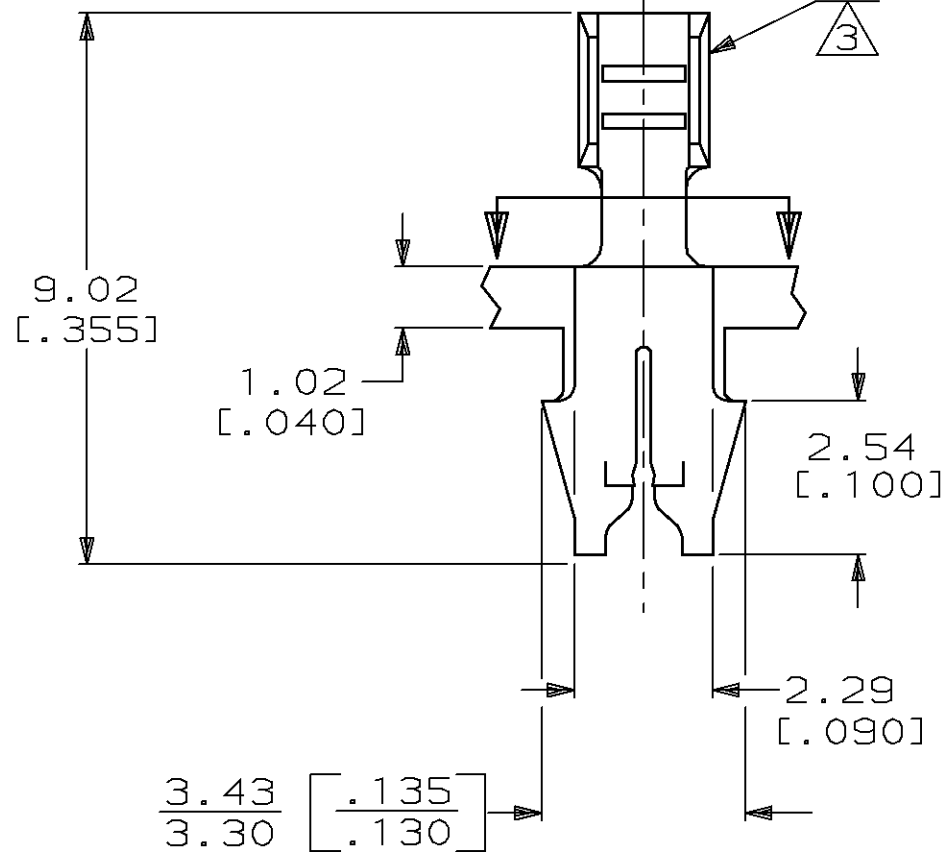
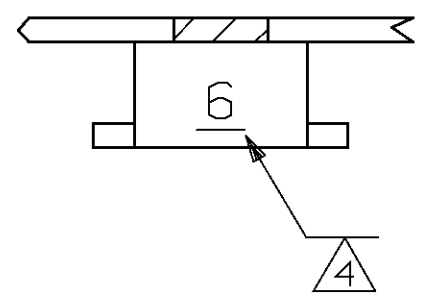


THIS DRAWING IS UNPUBLISHED. RELEASED FOR PUBLICATION, 19 .  
 © COPYRIGHT 19 BY AMP INCORPORATED. ALL INTERNATIONAL RIGHTS RESERVED.

LOC	DIST	P	F	ZONE	LTR	DESCRIPTION	DATE	APPD
AF	50					REVISED PER AF-6323	8/22/91	MSF/NN

- 1 CONTINUOUS STRIP ON REELS WITH TERMINALS LOCATED ON 5.08 [.200] CENTERS.
- 2 SLOT ACCEPTS A 0.25-0.32 mm DIA [#30-#28] AWG COPPER MAGNET WIRE ONLY (2 WIRES MAX).
- 3 WIRE BARREL ACCEPTS 0.12-0.40 mm<sup>2</sup> [#26-#22] AWG LEAD WIRE.
- 4 IDENTIFICATION NUMBER FOR MAGNET WIRE RANGE.



SECTION A-A  
ROTATED 90° CW

STRIP LENGTH ±.015	TYPE	WIDTH	±0.051 [.002] HEIGHT	WIRE
3.56 [.140]	F	1.40 [.055]	0.97 [.038]	0.35# [22]
			0.89 [.035]	0.20# [24]
			0.86 [.034]	0.14# [26]

WIRE BARREL CRIMP



0.00381 [.000150] MIN THK PER MIL-T-10727		63036-1	
FINISH		PART NO	
DO NOT SCALE PRINT. UNLESS SPECIFIED DIMENSIONS IN mm [INCHES] TOLERANCES ON : 2 PLC DEC ± - 3 PLC DEC ± 0.38 [.015] ANGLES ± -		AMP AMP INCORPORATED Harrisburg, Pa. 17105	
MATERIAL #4 HARD BRASS		NAME TERMINAL, F CRIMP, MAG-MATE™	
FINISH SEE TABLE		DRAWING NO 63036	
DR 8/3/89 DK SCHRUM CHK 8/16/89 MS FEHER APPD 8/16/89 NE NEFF APPD 8/17/89 TL SHUTTER PRODUCT SPEC -		CAGE CODE 00779	
APPLICATION SPEC 114-2069		SCALE 8:1	
WEIGHT -		SHEET 1 OF 1	