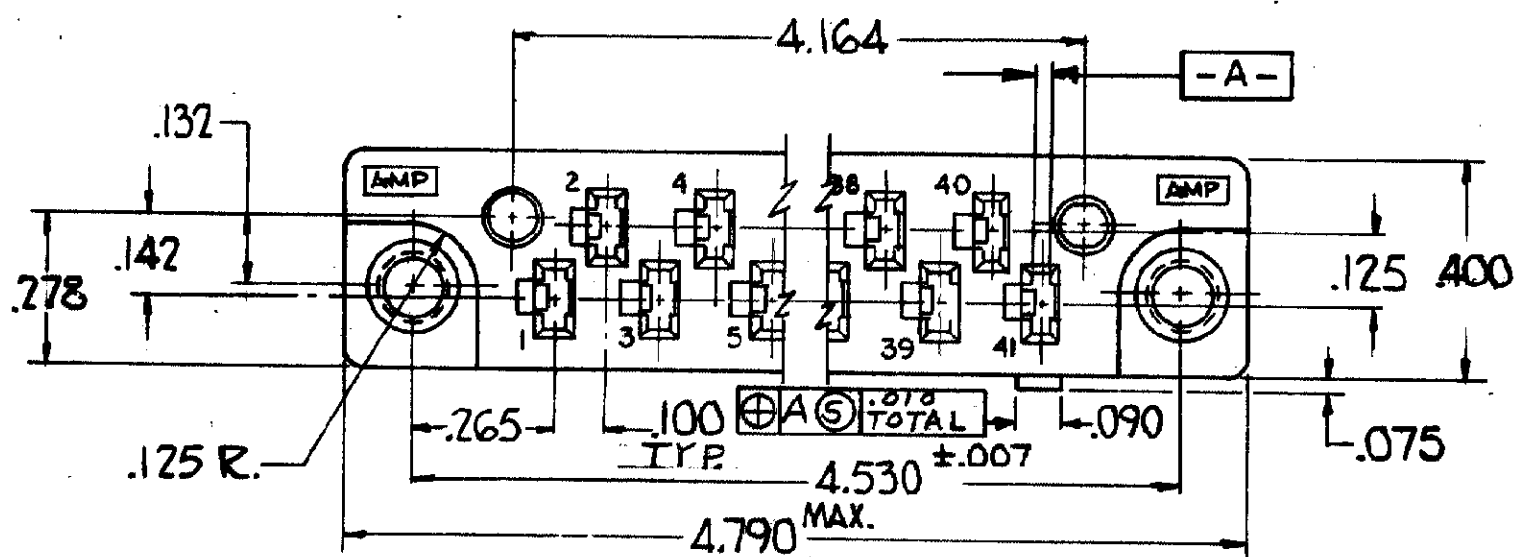
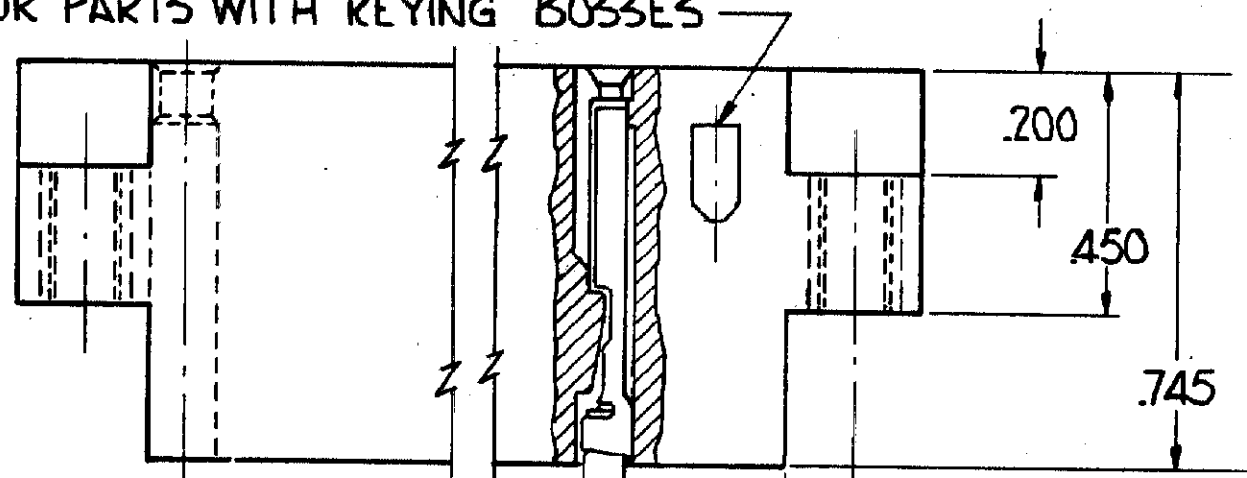


© 1964 BY AMP INCORPORATED. ALL RIGHTS RESERVED. AMP PRODUCTS COVERED BY PATENTS AND/OR PATENTS PENDING. APPROVED PER GOVT CONTRACT NO.

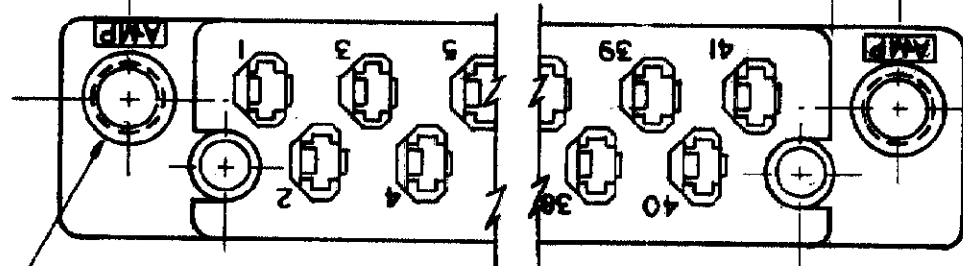
REVISIONS				
ZONE	LTR	DESCRIPTION	DATE	APPROVED
	0	RELEASED WAS # 5102-190	8-5-66	ER./L.H.
	A	REVISED SHT. 2	1094 11-9-66	M.S. D.H.
	A1	REVISED SHT. 2	2170 7-24-69	M.S. D.H.
	A-2	REVISED SHT. 1	2292 11-11-69	M.S. D.H.
	B	OBSASPERECOND 0949	21 11-66	JW



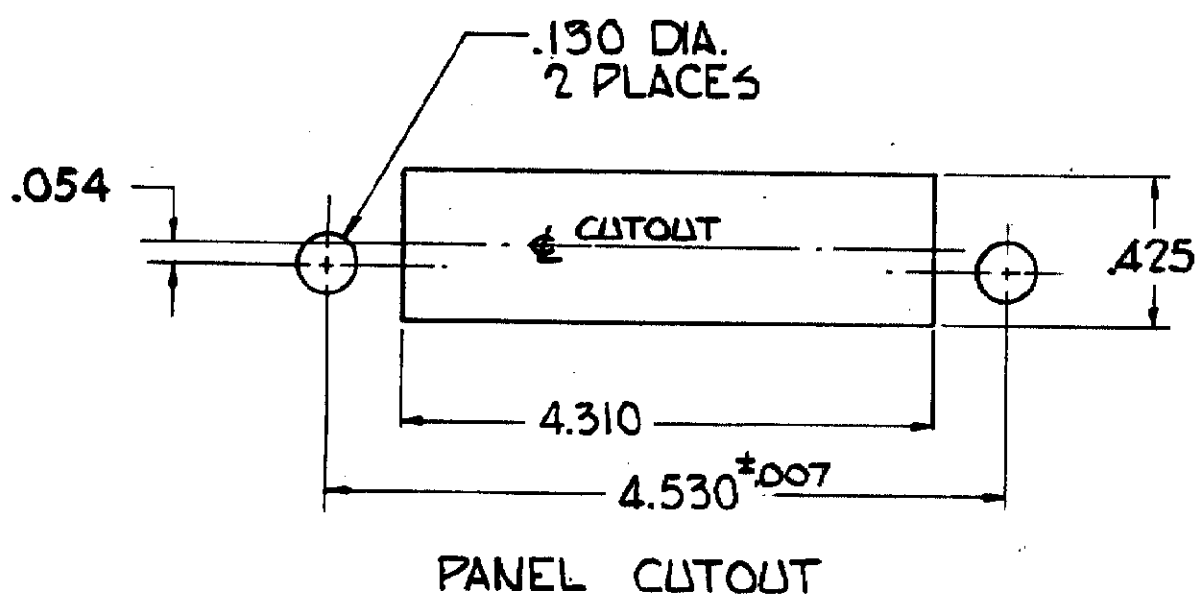
SEE SHEET 2 FOR PARTS WITH KEYING BOSSSES



CONTACT SHOWN FOR REF. ONLY



*4-40 THREADED INSERT
2 REQ'D.



PANEL CUTOUT

NOTE:

1. THE CAVITY CENTERLINES ARE MEASURED FROM THE CENTERLINE OF THE ALIGNMENT PIN HOLES AND AS LONG AS THE CAVITIES FALL WITHIN THE TOLERANCES INDICATED, THE ALLOWABLE WARPAGE IS INDEPENDENT OF THE CAVITIES AND BECOMES A MEASUREMENT OF THE OUTSIDE SURFACE OF THE BLOCK. IT DOES NOT AFFECT THE MATING OF THIS BLOCK WITH 582152.
2. THESE BLOCKS MATE PART -582152.
3. FOR SUPPLEMENT SPECIFICATIONS SEE E.S. 8-1-3.

NUMBER 583194

UNLESS OTHERWISE SPECIFIED DIMENSIONS ARE IN INCHES TOLERANCES ON		CONTRACT NO.		AMP INCORPORATED HARRISBURG, PENNSYLVANIA	
FRACTIONS ± #	DECIMALS ± .005	ANGLES ± #	DR E. Pennington	DATE 8-8-66	AMP TRADEMARK
MATERIAL DIALYL PHTHALATE GLASS FILLED - GREEN PER MIL-M-14, TYPE SDG-F			CHK S.S. Heide	DATE 8/10/66	NAME
HEAT TREAT			APPR Z. Hendrix	DATE 8/10/66	AMP BLADE RECEPTACLE HOUSING 41 CONTACTS W/ THREADED INSERTS
FINISH			DSGN APPR R. Hallock	DATE 8/10/66	SIZE C
			OTHER APPR		CODE IDENT NO. 00779
					NUMBER 583194
					SCALE 3/1
					WT. CALC. ACTUAL
					SHEET 1 OF 2

AMP INFO
LOC. PRINTING DIST.
DF B HO

© 1966 BY AMP INCORPORATED. ALL RIGHTS RESERVED. AMP PRODUCTS COVERED BY PATENTS AND/OR PATENTS PENDING. APPROVED PER GOVT CONTRACT NO.

REVISIONS				
ZONE	LTR	DESCRIPTION	DATE	APPROVED
	A.2			
B		OBS AS PER ECN OF 0749	ZP 11-88	JW

PART NO	KEYING BOSSES	PART NO	KEYING BOSSES	PART NO	KEYING BOSSES
3-583194-5	NONE	3-583194-6	△ 9 + 33	7-583194-7	3 + 21
3	△ 3 + 39	7	△ 9 + 35	1	△ 3 + 23
4	△ 3 + 37	7	△ 9 + 37	1	△ 3 + 29
4	△ 3 + 35	7	△ 9 + 39	2	5 + 9
4	△ 3 + 33	7	△ 11 + 13	2	△ 5 + 11
4	△ 3 + 31	7	△ 11 + 15	2	△ 5 + 13
4	△ 3 + 27	7	△ 11 + 17	2	△ 5 + 17
5	△ 9 + 23	8	△ 11 + 19	2	△ 5 + 19
4	9 + 13	8	△ 11 + 21	2	△ 5 + 21
5	△ 9 + 15	8	△ 11 + 23	2	△ 5 + 23
5	9 + 17	9	△ 15 + 19	2	△ 5 + 25
5	9 + 19	9	△ 15 + 21	2	△ 5 + 27
5	9 + 21	8	△ 11 + 35	2	△ 5 + 29
5	△ 9 + 25	8	△ 11 + 37	3	△ 5 + 31
5	△ 9 + 27	8	△ 11 + 39	3	△ 5 + 33
6	△ 11 + 33	8	△ 13 + 15	3	△ 5 + 35
6	△ 11 + 31	8	△ 13 + 17	3	△ 5 + 37
6	△ 11 + 29	8	△ 13 + 19	3	5 + 39
5	△ 11 + 27	8	△ 13 + 21	9-583194-9	△ 7 + 15
5	△ 11 + 25	9	13 + 23	583194-2	△ 7 + 19
5	△ 9 + 29	9	△ 13 + 27	3-583194-7	7 + 21
6	△ 13 + 25	3	△ 13 + 29	583194-3	7 + 23
6	△ 13 + 31	9	△ 13 + 33	3	△ 7 + 25
6	△ 7 + 9	9	13 + 35	4	△ 7 + 27
6	△ 7 + 11	9	△ 13 + 37	4	△ 7 + 29
6	△ 7 + 13	9	13 + 39	4-583194-2	△ 25 + 37
6	△ 7 + 17	1	△		
6	△ 7 + 31	1	△ 3 + 9		
7	△ 7 + 33	1	△ 3 + 11		
4	△ 7 + 35	1	3 + 13		
7	△ 7 + 37	1	3 + 15		
7	△ 7 + 39	1	3 + 17		
7-583194-3	△ 9 + 31	7-583194-6	△ 3 + 19		

NOTE:
 1. KEYED AT ALL ODD NUMBERED POSITIONS, 1 THRU 41 INCLUSIVE.
 2. FOR ADDITIONAL KEYED HOUSINGS, SEE DWG. NO. 583481.
 3. OBS PART NO.

NUMBER 583194

UNLESS OTHERWISE SPECIFIED		CONTRACT NO		AMP INCORPORATED HARRISBURG, PENNSYLVANIA	
DIMENSIONS ARE IN INCHES TOLERANCES ON		DR	DATE	AMP TRADEMARK	
FRACTIONS	DECIMALS	E. Pennington	6-8-66	AMP BLADE RECEPTACLE HOUSING 41 CONTACTS W/ THREADED INSERTS	
ANGLES		CHK	DATE	SIZE	CODE IDENT NO
		R. Heide	8/10/66	C	00779
MATERIAL		DESIGN ENGR	DATE	NUMBER	583194
				SCALE	WT
HEAT TREAT		APPR	DATE	CALC	ACTUAL
		Z. Hendra	8/10/66	SHEET	2 OF 2
FINISH		DESIGN APPR	DATE	CUSTOMER DRAWING	
		R. Holladay	9/1/66		
		OTHER APPR			

AMP INFO
 LOC DF (B) HO