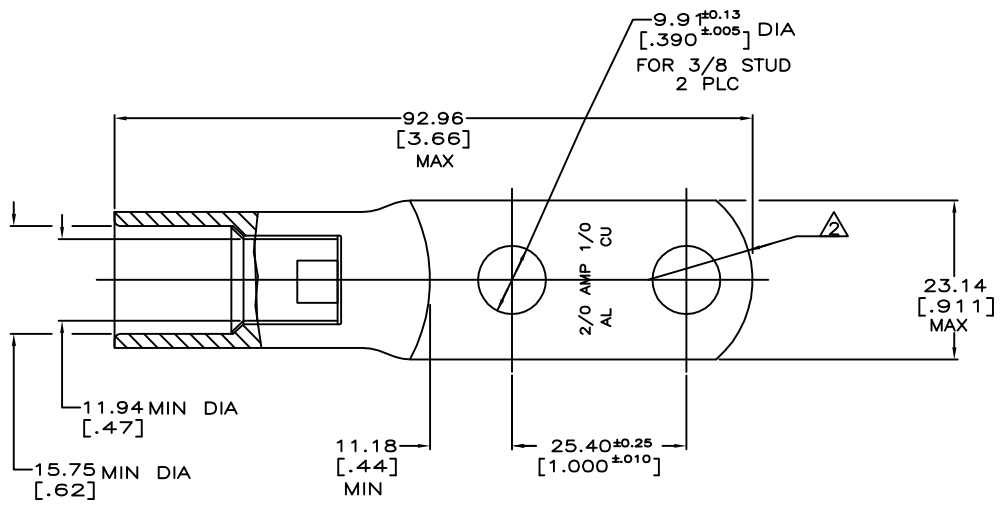
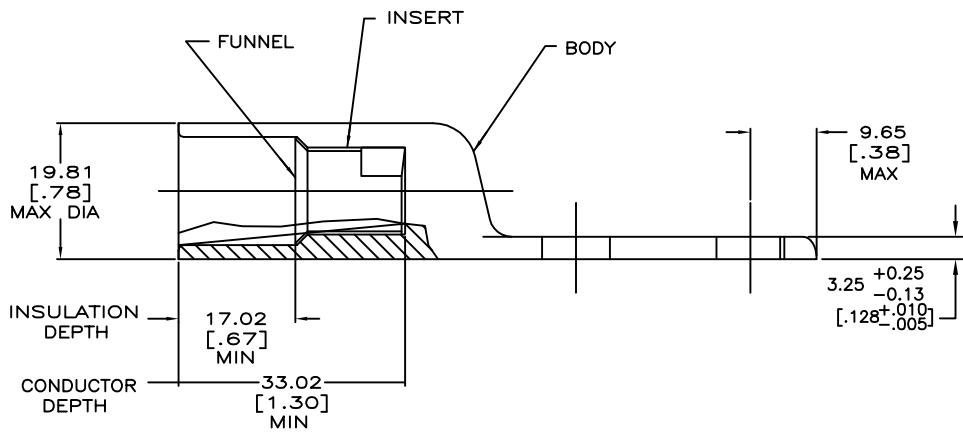


THIS DRAWING IS UNPUBLISHED. RELEASED FOR PUBLICATION
 © COPYRIGHT - By - ALL RIGHTS RESERVED.

REVISIONS					
#	LR	DESCRIPTION	DATE	DR	APPD
1	H	REV PER ECO 18-000671	2-16-18	CT	PD



1 WIRE INSULATION: 12.70[.500] - 13.97[.550] DIA
 THE TONGUE RADIUS FEATURE IS NOT A TOOLING CONTROLLED DIMENSION AND MAY NOT BE A TRUE RADIUS.



BODY: COPPER ASTM-B187 ANNEALED TIN PL MIL-T-10727 0.00457[.000150] MIN THK	55839-1
INSERT & FUNNEL: BRASS PER ASTM B36 NICKEL PLATE SAE AMS QQ-N-290A, DATED JULY 2000, 0.00254 [.000100] MIN THK	
MATERIAL AND FINISH	PART NO.

THIS DRAWING IS A CONTROLLED DOCUMENT.		DRN DK SCHRUM 6/15/92	TE TE Connectivity	
DIMENSIONS: mm [INCHES]		CHK WJ VOCKROTH 6/16/92		
TOLERANCES UNLESS OTHERWISE SPECIFIED:		DRN AJ KAUFMAN 6/16/92	NAME	
0 PLC ± -	1 PLC ± -	PRODUCT SPEC 108-11011		
2 PLC ± -	3 PLC ± -	APPLICATION SPEC 114-2134		
4 PLC ± -	ANGLES ± -	WEIGHT 0.000000	SIZE A2	CAGE CODE 00779
MATERIAL SEE TABLE	FINISH SEE TABLE	CUSTOMER DRAWING	SCALE 2:1	RESTRICTED TO -
			SHEET 1 of 1	REV H