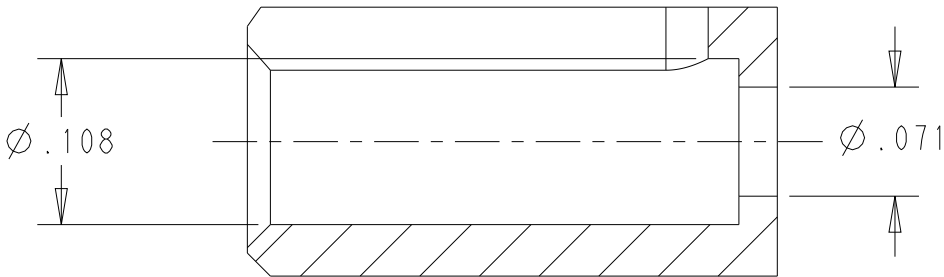
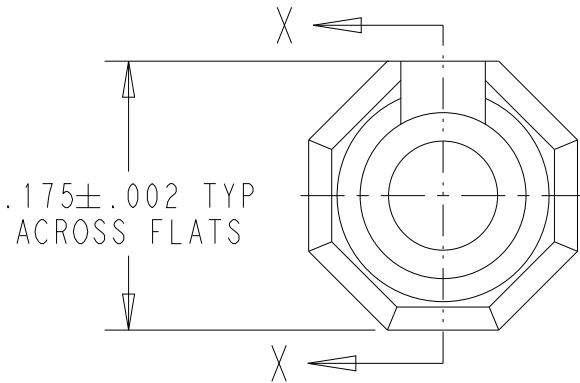
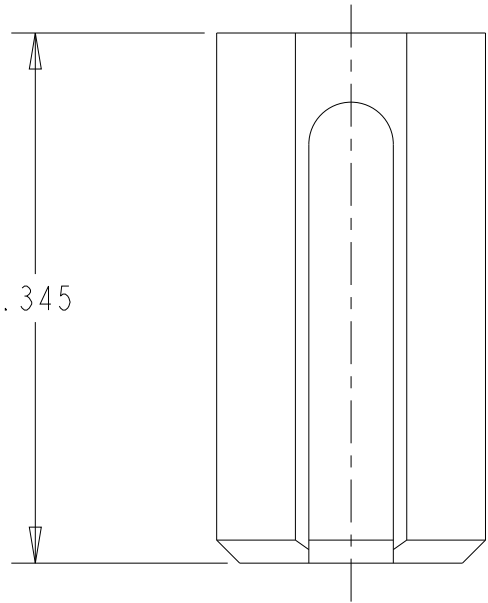


WARNING - THIS DOCUMENT CONTAINS TECHNOLOGY WHOSE EXPORT IS RESTRICTED BY THE EXPORT ADMINISTRATION REGULATIONS ("EAR") PURSUANT TO 15 C.F.R. PARTS 730-774. VIOLATIONS OF THE EAR ARE SUBJECT TO SEVERE CRIMINAL PENALTIES UNDER THE EXPORT CONTROL REFORM ACT, AS AMENDED (TITLE 50, U.S.C., SEC. 4801, ET SEQ.).

P	LTR	DESCRIPTION	DATE	DWN	APVD
	R	NEW DRAWING PER ECN-25-300342	11FEB2025	JAB	JP



531714-1 AS SHOWN


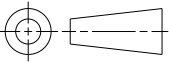
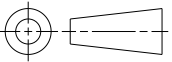
SECTION X - X

1	531714-2
2	531714-1
REMARKS	PART NUMBER

1 MATERIAL: STAINLESS STEEL.

2 FINISH: PASSIVATED.

3. TO BE USED WITH PIN 531713-1

THIS DRAWING IS A CONTROLLED DOCUMENT.		DWN J.A.BAKER 17DEC2024	 TE Connectivity		
DIMENSIONS: in		CHK J.PARKE 17DEC2024			
		APVD J.PARKE 11FEB2025			
		PRODUCT SPEC			
		APPLICATION SPEC	NAME COMBINATION GUIDE KEYING INSERT		
		WEIGHT	SIZE A3	CAGE CODE 00779	DRAWING NO C-531714
MATERIAL 1		FINISH 2	RESTRICTED TO -		
CUSTOMER DRAWING			SCALE 8:1	SHEET 1 OF 1	REV R