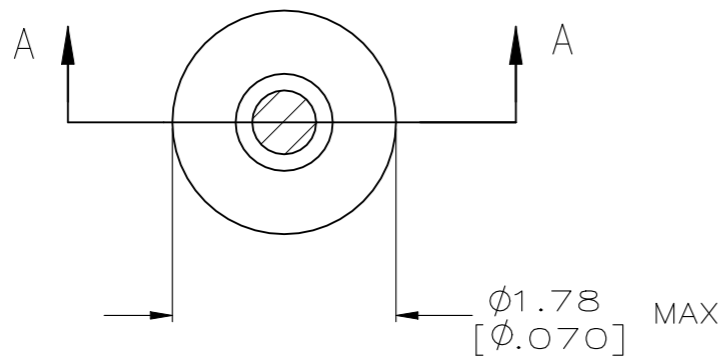


REVISIONS

| P | LTR | DESCRIPTION | DATE | DWN | APVD |
|---|-----|------------------------------|-----------|-----|------|
| | AG4 | REVISED AS PER ECR-24-199424 | 07FEB2024 | NR | JK |



- 1. TIN PER MIL-T-10727 OR TIN LEAD .000254 [.000100] MIN THK.
- 2. GOLD PER MIL-G-45204, TYPE II, 0.00076 [.000030] MIN THK OVER NICKEL PER QQ-N-290 0.00028 [.000011] MIN THK ON CONTACT AREA.
- 3. GOLD FLASH PER MIL-G-45204, TYPE II, 0.13µm [.000005] MIN THK. OVER NICKEL PLATE PER QQ-N-290 0.51µm-1.52µm [.000020-.000060] EXT THK.
- 4. GOLD PER MIL-G-45204, TYPE II, 0.00127 [.000050] MIN THK.
- 5. GOLD PER MIL-G-45204, TYPE II, 0.00127 [.000050] MIN THK OVER NICKEL PER QQ-N-290 0.00127 [.000050] MIN THK ON CONTACT AREA.

6. RECOMMENDED HOLE SIZE, PLATED OR UNPLATED:

MACHINE INSERTION: 1.32 ^{+0.08}/_{-0.05} [.052 ^{+0.003}/_{-0.002}]

HAND INSERTION: 1.32 ^{+0.10}/_{-0.00} [.052 ^{+0.004}/_{-0.000}]

7. APPLICATION TOOL PART NUMBER:

MACHINE NO. 682127-3

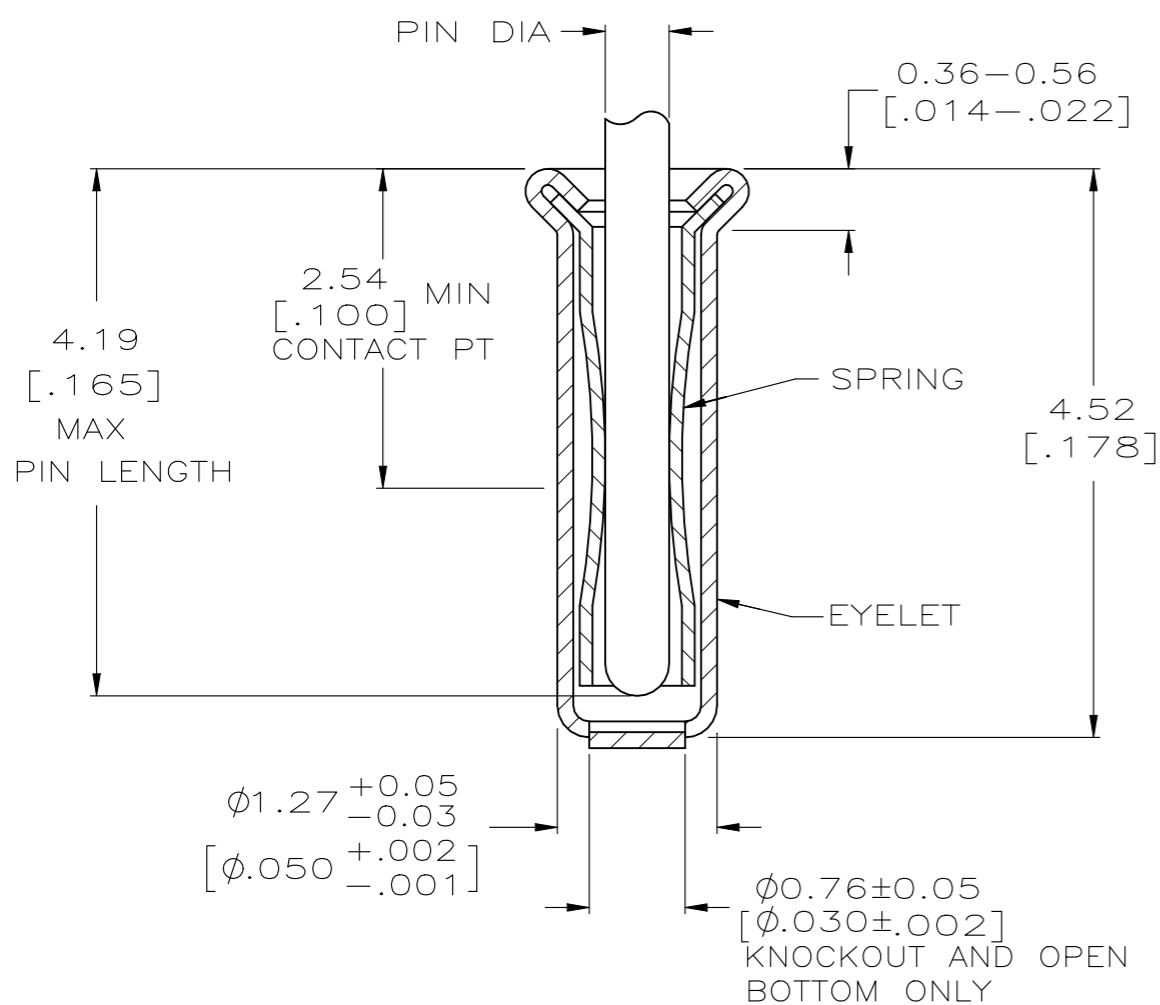
INSERTION HEAD NO. 682039-2

- 8. TO INSURE PROPER SPRING TENSION DO NOT EXCEED A 0.10 [.004] DIFFERENCE IN PIN DIA WHEN CHANGING TO A SMALLER PIN.

- 9. BOTTOM PLUG KNOCKOUT TOOL PART NUMBER 69729 WITH TIP PART NUMBER 69728.

- 10. TIN PER ASTM B545, 0.00254 [.000100] MIN THK.

- 11. MATERIAL: SPRING: BERYLLIUM COPPER QQ-C-533
EYELET: COPPER, QQ-C-576



SECTION A-A

| SUPSD BY | BOTTOM TYPE | RECOMMENDED PIN DIA | FINISH | | PART NO |
|----------|-------------|-----------------------|--------|--------|-----------|
| | | | EYELET | SPRING | |
| | CLOSED | | TIN 10 | TIN 10 | 6-50462-7 |
| | OPEN | | GOLD 4 | GOLD 5 | 1-50462-5 |
| | | | | | 1-50462-4 |
| | CLOSED | | TIN 1 | GOLD 2 | 50462-8 |
| | | | TIN 1 | TIN 1 | 50462-7 |
| | | 0.36-0.66 [.014-.026] | GOLD 3 | GOLD 2 | 50462-6 |
| | KNOCKOUT | | | | 50462-5 |
| | | | TIN 1 | TIN 1 | 50462-4 |
| | OPEN | | | | 50462-2 |
| | | | GOLD 3 | GOLD 2 | 50462 |
| | BOTTOM TYPE | RECOMMENDED PIN DIA | EYELET | SPRING | PART NO |

| | | | | | |
|--|--|----------------------|--|--------------|------------|
| THIS DRAWING IS A CONTROLLED DOCUMENT. | | DWN R. TALLEY 4-5-91 | STE TE Connectivity | | |
| DIMENSIONS: mm [INCHES] | | CHK - | | | |
| TOLERANCES UNLESS OTHERWISE SPECIFIED: | | APVD - | NAME | | |
| 0 PLC ± - | | PRODUCT SPEC - | MINIATURE SPRING SOCKET ASSEMBLY, SERIES 2 | | |
| 1 PLC ± - | | APPLICATION SPEC - | SIZE | CAGE CODE | DRAWING NO |
| 2 PLC ± - | | WEIGHT 0.000000 | A3 | 00779 | C-50462 |
| 3 PLC ± 0.20 [.008] | | CUSTOMER DRAWING | SCALE 20:1 | SHEET 1 OF 1 | REV AG4 |
| 4 PLC ± - | | | | | |
| ANGLES ± - | | | | | |
| FINISH - | | | | | |
| MATERIAL 11 | | | | | |