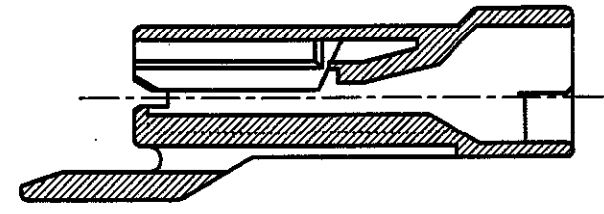
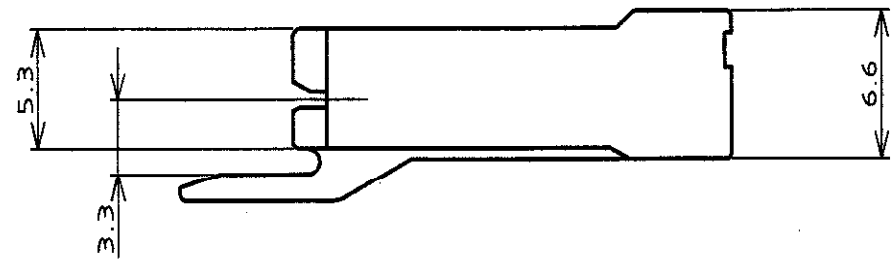
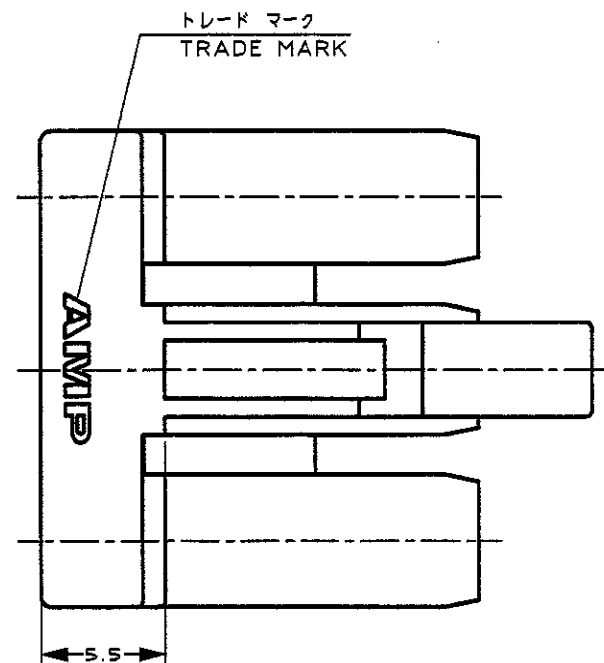
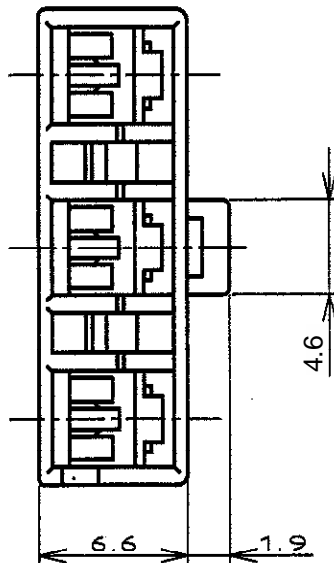
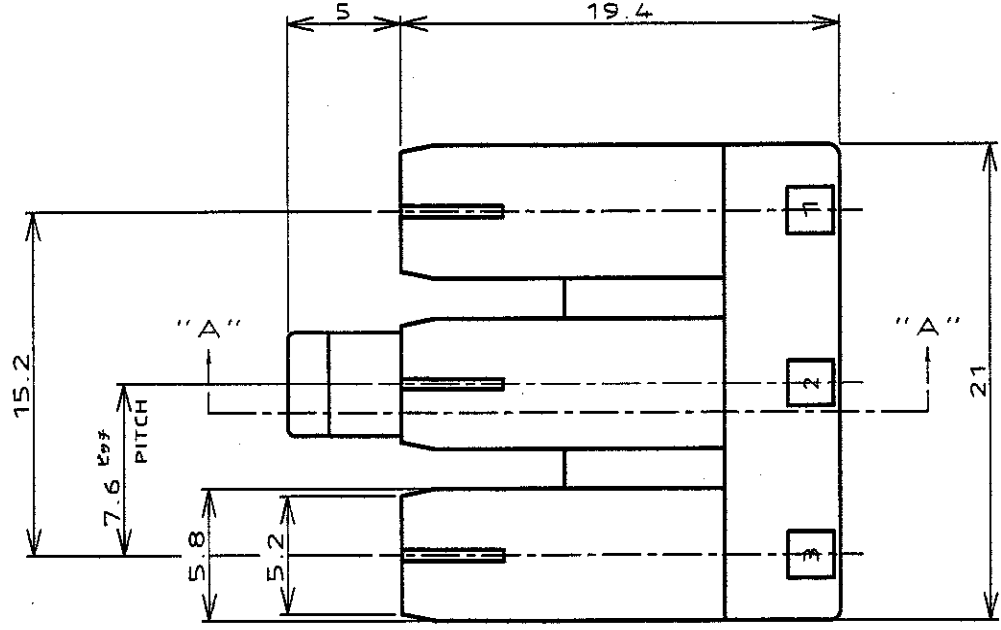
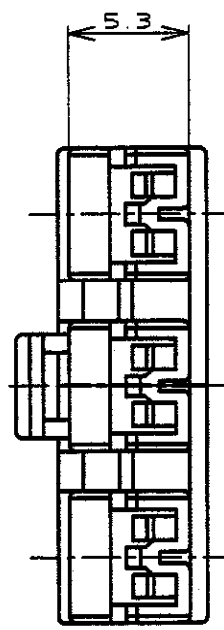


LOC		DIST		REVISIONS				
P	LTR	DESCRIPTION	ECN	DATE	DWN	APVD		
	A	REVISED	FJ00-0612-01	11JUN.'01	T.Y	M.S		
	A1	REVISED PER	ECO-09-026346	26NOV09	KK	AEG		
	A2	REVISED PER	ECO-18-005630	12APR18	DT	TD		



断面 "A" - "A" SECT.

1 OBSOLETE PARTS: OBSOLETE CIS STREAMLINING PER D.RENAUD/D.SINISI

1 OBSOLETE	赤 (RED)	353255-7
	青 (BLUE)	353255-6
	自然色 (NATURAL)	353255-1
	色別 (COLOR)	型番 (P/N)

THIS DRAWING IS A CONTROLLED DOCUMENT FOR AMP INCORPORATED. IT IS SUBJECT TO CHANGE AND THE CONTROLLING ENGINEERING ORGANIZATION SHOULD BE CONTACTED FOR THE LATEST REVISION.		CHK M.SUZUKI 23.AUG.'96	APVD H.TAGUCHI 26.AUG.'96	AMP Tyco Electronics AMP K.K. Kawasaki, Japan
DIMENSIONS: 単位 寸 mm	TOLERANCES UNLESS OTHERWISE SPECIFIED 一般公差 10 : ±0.2 >10 : ±0.25 >30 : ±0.3 ANGLE : ±0.3°	PRODUCT SPEC 製品規格 108-5530	APPLICATION SPEC 取付適用規格 114-5229	
MATERIAL 材料 6/6ナイロン(UL94V-0) 6/6 NYLON	FINISH 仕上 ---	WEIGHT ---	CUSTOMER DRAWING	WIRE RANGE 適合電線断面積 --- INSULATION DIA 被覆外径 ---
		SIZE A3	CAGE CODE 00779	DRAWING NO C=353255
		SCALE 尺数 ---		SHEET 1 OF 1 REV A2