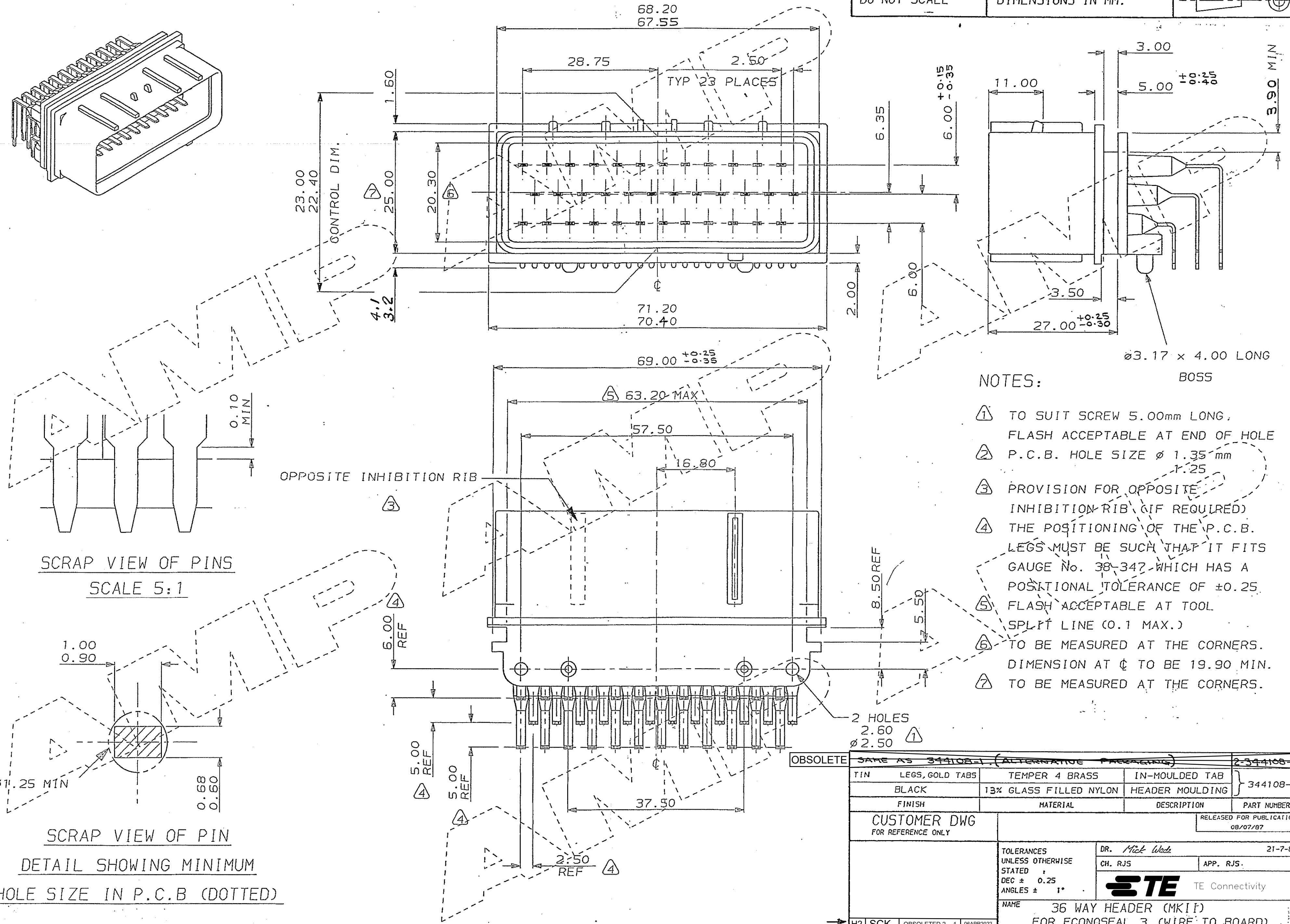
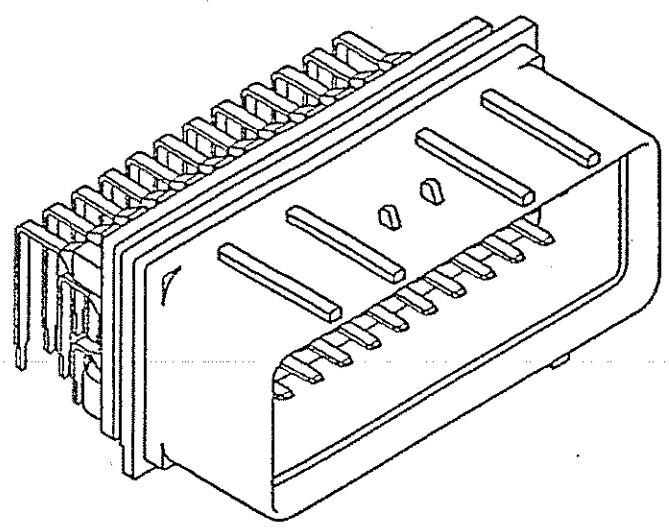


C.A.D. FILE CODE  
S. C344108.

DO NOT SCALE DIMENSIONS IN MM.



- NOTES:
- ① TO SUIT SCREW 5.00mm LONG, FLASH ACCEPTABLE AT END OF HOLE
  - ② P.C.B. HOLE SIZE  $\phi$  1.35 mm
  - ③ PROVISION FOR OPPOSITE INHIBITION RIB (IF REQUIRED)
  - ④ THE POSITIONING OF THE P.C.B. LEGS MUST BE SUCH THAT IT FITS GAUGE No. 38-347 WHICH HAS A POSITIONAL TOLERANCE OF  $\pm 0.25$
  - ⑤ FLASH ACCEPTABLE AT TOOL SPLIT LINE (0.1 MAX.)
  - ⑥ TO BE MEASURED AT THE CORNERS. DIMENSION AT  $\phi$  TO BE 19.90 MIN.
  - ⑦ TO BE MEASURED AT THE CORNERS.

OBSOLETE		SAME AS 344108-1 (ALTERNATIVE PREPARING)		2-344108-1
TIN	LEGS, GOLD TABS	TEMPER 4 BRASS	IN-MOULDED TAB	344108-1
	BLACK	13% GLASS FILLED NYLON	HEADER MOULDING	
FINISH		MATERIAL	DESCRIPTION	PART NUMBER
CUSTOMER DWG FOR REFERENCE ONLY		RELEASED FOR PUBLICATION 08/07/87		
TOLERANCES UNLESS OTHERWISE STATED :		DR. Mick Wade		21-7-88
DEC $\pm$ 0.25		CH. RJS		APP. RJS.
ANGLES $\pm$ 1°		<b>STE</b> TE Connectivity		
NAME 36 WAY HEADER (MK1P) FOR ECONOSEAL 3 (WIRE TO BOARD)				
H2	SCK	OBSOLETE 2-...-1	06APR2022	SCALE
H1	RKHMR	REVISED PER ECO-11-005150	28MAR11	LOC
REV	APPROVED	ECN	DATE	SIZE
				DWG.No.
				REV
				SHEET
				H2
				1/1

WAS CP86-076-04

\*.x - 0.TIF - 9/15/03 8:14:42 AM