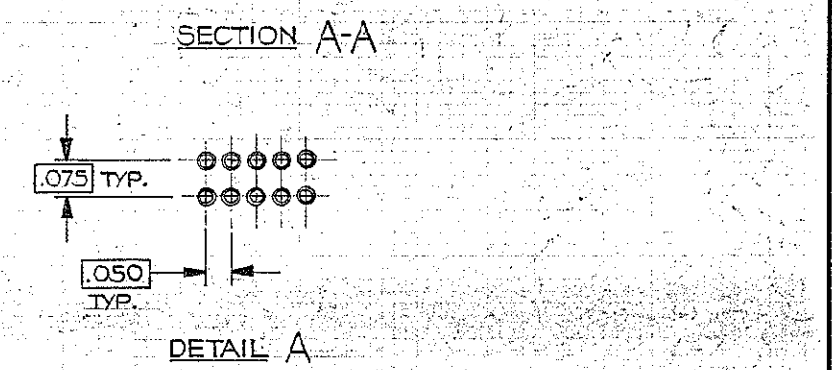
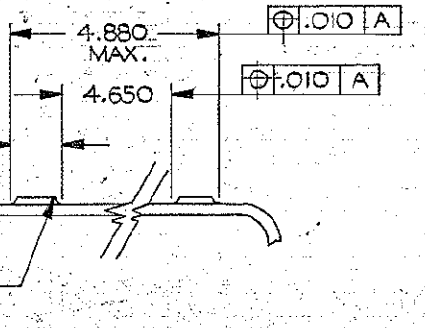
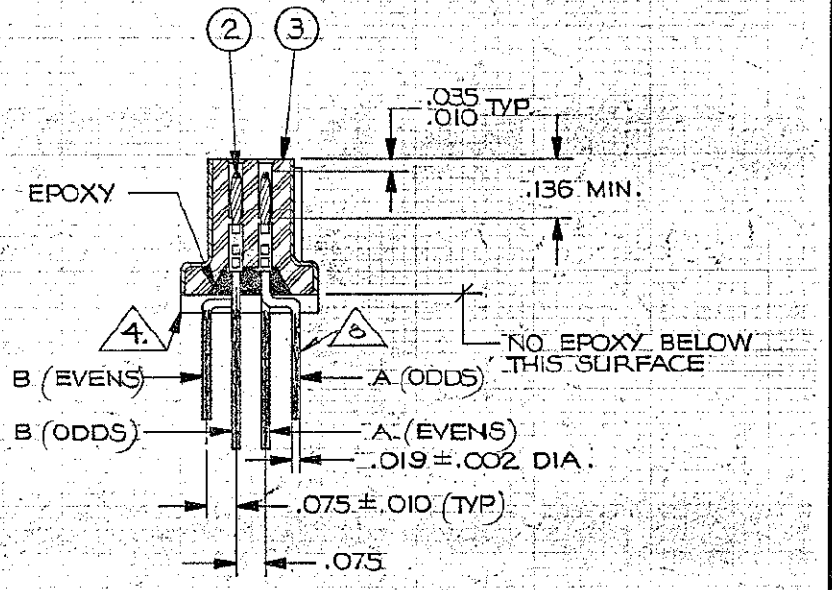
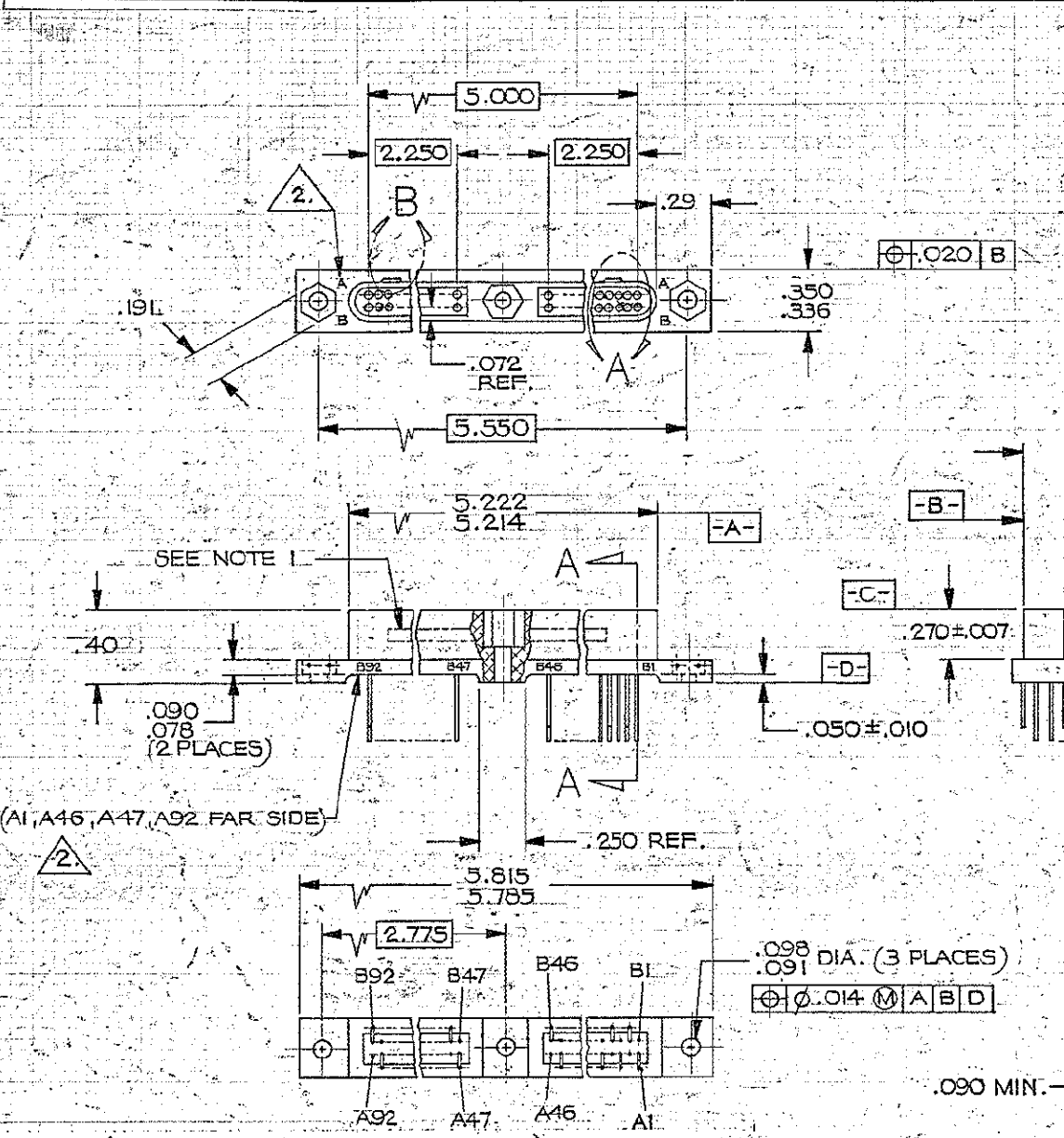
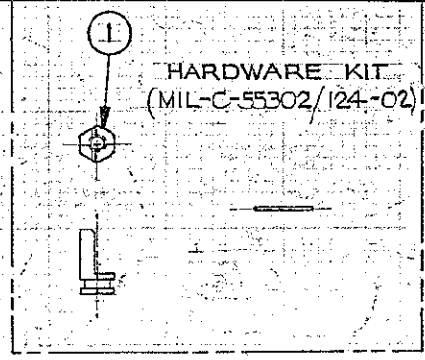


REVISIONS					
ZONE	LTR	ECN	DESCRIPTION	DATE	APPROVED
	C	30915	REVISED AND REDRAWN ORIGINAL RELEASE BY L.M. (5/1/87)	7/17/87	
	D	30959	UPDATE REV. LETTER	8/28/87	
	E	31461	ADDED TINNING INSTRUCTIONS	9-2-87	
	F	32810	REV. LTR. UPDATE	9/15/91	
	G	33372	TITLE UPDATED - SEE ECN	3/11/91	
	H	36238	UPDATE REV. LETTER	4/13/96	
	J	36894	REV. UPDATE, SH 3/6/97	3/6/97	
	K	38614	UPDATE REV. LETTER		
	L	39012	UPDATE REV. LETTER	6-4-97	



NOTES (UNLESS OTHERWISE SPECIFIED)
 1. MARK PER TIS.
 2. CAVITY IDENT AS SHOWN, BLACK CHARACTERS IN ACCORDANCE WITH MIL-STD-1285.
 3. FORM TERMINAL WIRES AS SHOWN, NO SCRATCHES EXPOSING BASE METAL PERMITTED ON WIRES AFTER FORMING.
 4. THE 90° BEND IN THE TERMINAL SHALL NOT EXTEND BELOW THE PLANE OF THE MOUNTING FLANGE.
 5. X-RAY REQUIREMENTS (QUAL & REQUAL UNITS ONLY)
 REPRESENTATIVE SAMPLE CONNECTORS SHALL BE X-RAYED BY THE WET FILM PROCESS TO PRODUCE 1 TO 1 CONTACT IMAGES TWO DIFFERENT LATERAL IMAGES SHALL BE TAKEN AT ± 18.5° INCIDENT ANGLES 50° AS TO VIEW BOTH ROWS OF CONTACTS SIMULTANEOUSLY IN EACH IMAGE THE DEVELOPED FILM SHALL BE INSPECTED AT 10 POWER MINIMUM MAGNIFICATION FOR PROPER PIN BUNDLE & TERMINAL WIRE INSERTION DEPTH.
 6. TWO POLARIZING KEYS & FOUR RETAINING PINS ARE SUPPLIED BUT NOT ASSEMBLED, HARDWARE SHALL BE SEALED IN A CLEAR POLY BAG IDENTIFIED "MIL-C-55302/124-02, DATE CODE 98278" & PACKAGED ALONG WITH

THE CONNECTOR

7. MATES WITH CONNECTORS SPECIFIED IN MIL-C-55302/123.

LEADS TINNED AS SHOWN (TINNING MAY GO UP BEYOND THE MOUNTING SURFACE)

QTY REQD	CODE IDENT	PART OR IDENTIFYING NO.	NOMENCLATURE OR DESCRIPTION
			UNLESS OTHERWISE SPECIFIED DIMENSIONS ARE IN INCHES TOLERANCES ARE: FRACTIONS DECIMALS ANGLES ± .XX ± .02 ± XXX ± .005
			MATERIAL
			FINISH
			CONTRACT NO.
			APPROVALS DATE
			DRAWN L.MATEO 6/26/87
			CHECKED H.SHIMAZA 7-17-87
			PR. ENG. M.SHIMAZA 7-17-87
			APPD.
			These drawings and specifications are the property of Microdot Inc. and shall not be divided, reproduced or copied, or used as the basis for the manufacture or sale of any article without written permission of Microdot Inc.
			SIZE CODE IDENT NO. DRAWING NO.
			C 98278 095-0087-8008
			SCALE NONE SHEET 1 OF 1

PARTS LIST

MATERIAL		CONTRACT NO.	
FINISH		APPROVALS DATE	
NEXT ASSY USED ON		DRAWN L.MATEO 6/26/87	
APPLICATION		CHECKED H.SHIMAZA 7-17-87	
DO NOT SCALE DRAWING		PR. ENG. M.SHIMAZA 7-17-87	
		APPD.	
		These drawings and specifications are the property of Microdot Inc. and shall not be divided, reproduced or copied, or used as the basis for the manufacture or sale of any article without written permission of Microdot Inc.	
		SIZE CODE IDENT NO. DRAWING NO.	
		C 98278 095-0087-8008	
		SCALE NONE SHEET 1 OF 1	