

4

3

2

1

THIS DRAWING IS UNPUBLISHED.

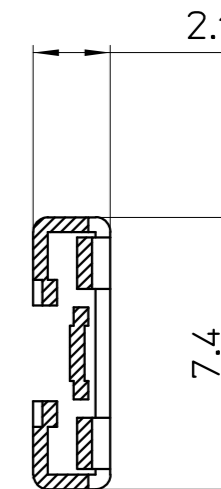
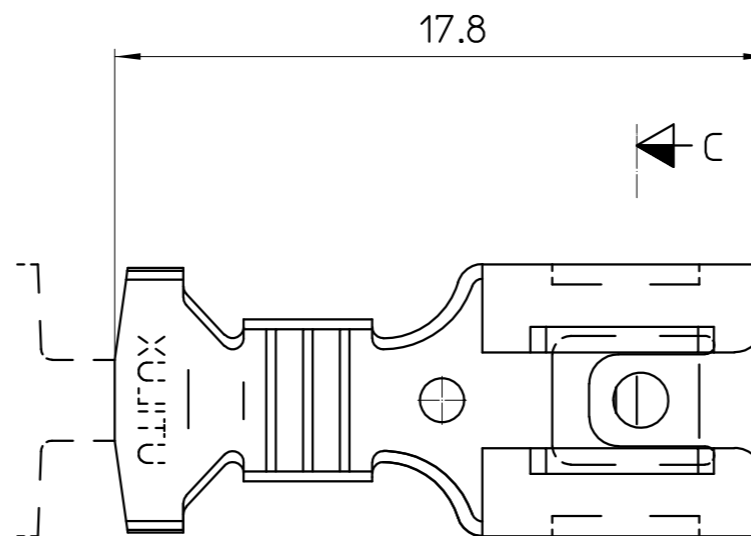
RELEASED FOR PUBLICATION

© COPYRIGHT - BY TYCO ELECTRONICS CORPORATION. ALL RIGHTS RESERVED.

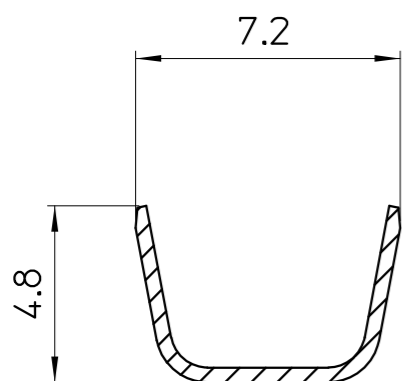
LOC	DIST
-	-

REVISIONS

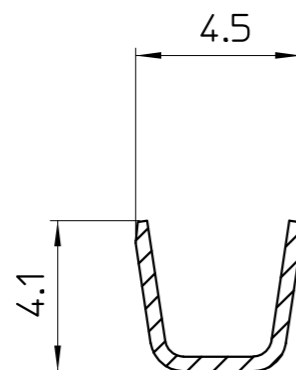
P	LTR	DESCRIPTION	DATE	DWN	APVD
-	-		-	-	-



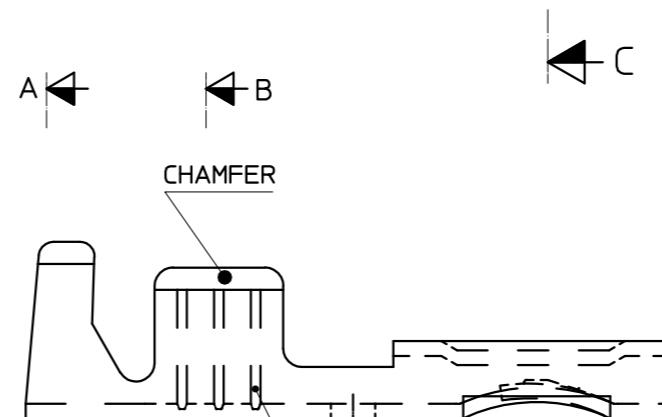
C-C



A-A



B-B

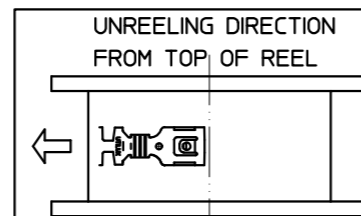


CHAMFER

3 INTERNAL RIBS

NOTES:

- WIRE SIZE RANGE:  
CONDUCTOR: 2 x 0.75mm<sup>2</sup> - 2 x 1.0mm<sup>2</sup>  
INSULATION DIA : 2 x 2.6mm - 2 x 2.8mm
- MAXIMUM CURRENT RATING: 10A
- FOR CRIMPING DETAILS REFER TO UTILUX CRIMP CHART NO. H25930



UNREELING DIRECTION FROM TOP OF REEL

THIS DRAWING IS A CONTROLLED DOCUMENT.

ALL DIMENSIONS IN mm:

TOLERANCES UNLESS OTHERWISE SPECIFIED:	
DIMENSION (mm)	TOLERANCE(+mm)
LESS THAN 10	0.4
OVER 10 TO 30	0.5
OVER 30 TO 80	0.7
OVER 80 TO 250	1.0
ANGLES	±2°

MATERIAL

FINISH

BRASS	RECEPTACLE H25930	1-0279509-0
MATERIAL	DESCRIPTION	PART No.
DWN: W.RIEDE 26.10.04	Tyco Electronics Corporation AUSTRALIA	
CHK: H.THAI 26.10.04		
APVD: W.RIEDE 26.10.04	NAME: RECEPTACLE QC 6.3	
PRODUCT SPEC: -	SIZE: A3	CAGE CODE: -
APPLICATION SPEC: -	DRAWING NO: ©=279509	
WEIGHT: -	RESTRICTED TO: -	
CUSTOMER DRAWING		SCALE: 5:1
		SHEET 1 OF 1
		REV 0

THIS INFORMATION IS CONFIDENTIAL AND PROPRIETARY TO TYCO ELECTRONICS CORPORATION AND ITS WORLDWIDE SUBSIDIARIES AND AFFILIATES. IT MAY NOT BE DISCLOSED TO ANYONE OTHER THAN TYCO ELECTRONICS PERSONNEL WITHOUT WRITTEN PERMISSION FROM TYCO ELECTRONICS CORPORATION, HARRISBURG, PENNSYLVANIA, USA.