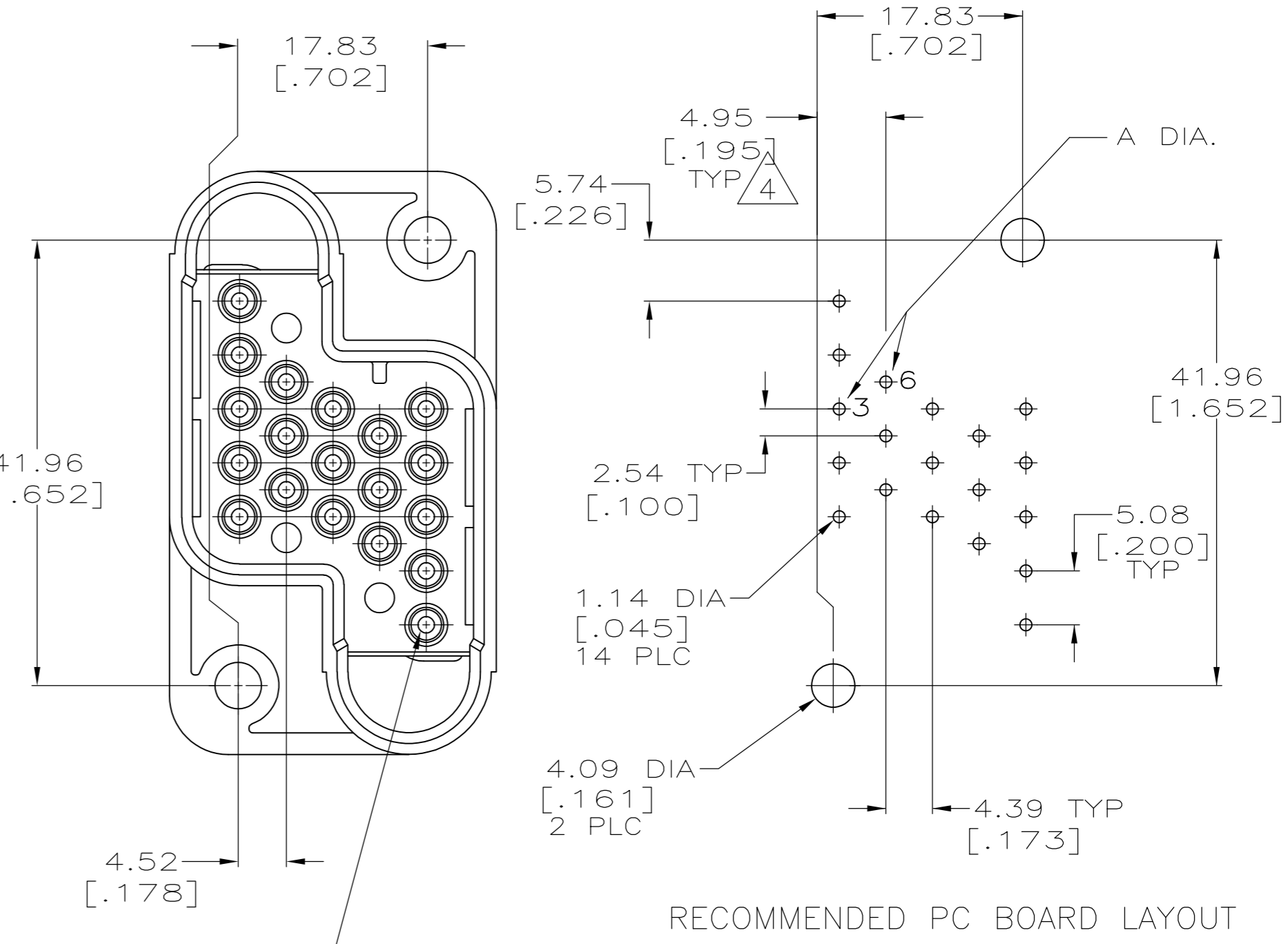
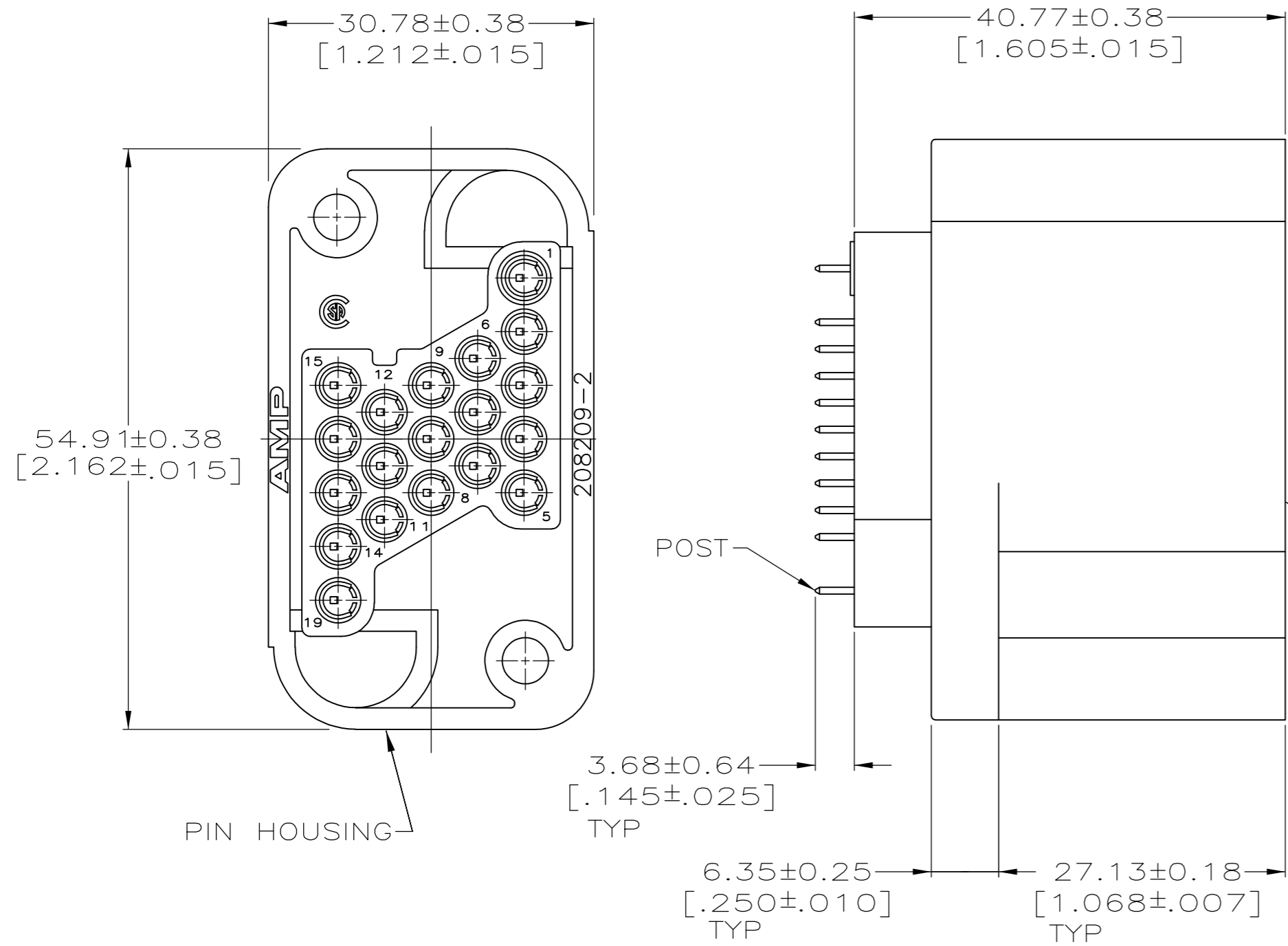


THIS DRAWING IS UNPUBLISHED. RELEASED FOR PUBLICATION  
 © COPYRIGHT - By - ALL RIGHTS RESERVED.

LOC		DIST		REVISIONS			
P	LTR	DESCRIPTION	DATE	DWN	APVD		
FT	0	J3	REVISED PER ECO-13-008672	02SEP2013	KH	DR	



- 1 ALL POSITIONS LOADED WITH POSTED SIZE 16 PIN CONTACTS EXCEPT POSITION 1.
- 2 0.76um[.000030] MIN GOLD FOR A LENGTH OF 5.08[.200] MIN FROM MATING END, GOLD FLASH ON THE REMAINDER, BOTH OVER 1.27 [.000050] MIN NICKEL ON PIN END. POST END 2.54 TIN-LEAD OVER 2.54.
- 3 CONTACT ASSEMBLY SHOULD BE FULLY SEATED IN HOUSING PRIOR TO SOLDERING TO PRINTED CIRCUIT BOARD.
- 4 THIS DIMENSION HAS BEEN CHANGED FROM THE STANDARD MOUNTING DIMENSION BY 0.43[.017] DUE TO THE POSTED CONTACT.
- 5 POSTED SIZE 16 PIN CONTACTS LOADED IN POSITIONS 1,4,5,6,7,8,12,13, 14,15,16,AND 19. POSTED SIZE 16 GROUND PIN LOADED IN POSITIONS 2,3,9,10,11,17 AND 18.
- 6 SELECTIVELY LOADED IN POSITIONS 1, 2, 4, 5, 10 THRU 19 WITH POSTED CONTACT SIZE 16. POSITIONS 3 AND 6 ARE LOADED WITH A LONGER CONTACT (.045 SQUARE POST). POSITIONS 7, 8 AND 9 ARE NOT LOADED.
- 7 HOUSING: POLYESTER, BLACK  
PIN CONTACT: BRASS  
SPRING: STAINLESS STEEL
- 8 0.76um[.000030] MIN GOLD FOR A LENGTH OF 5.08[.200] MIN FROM MATING END, GOLD FLASH ON THE REMAINDER, BOTH OVER 1.27 [.000050] MIN NICKEL ON PIN END. POST END 2.54 TIN OVER 2.54.
- 9 POSTED SIZE 16 PINS LOADED IN POSITIONS 1 THRU 8 AND 12 THRU 19. POSTED SIZE 16 GROUND PINS LOADED IN POSITIONS 9, 10 AND 11.
- 10 OBSOLETE PARTS: OBSOLETE CIS STREAMLINING PER D.RENAUD/D.SINISI

OBSOLETE	8	1.14 [.045]	9	213738-8
OBSOLETE	8	1.88 [.074]	6	213738-7
OBSOLETE	8	1.14 [.045]	5	213738-6
	8	1.14 [.045]	ALL POSITIONS LOADED	213738-5
OBSOLETE	2	1.88 [.074]	6	213738-4
OBSOLETE	2	1.14 [.045]	5	213738-3
OBSOLETE	2	1.14 [.045]	ALL POSITIONS LOADED	213738-2
OBSOLETE	2	1.14 [.045]	1	213738-1

FINISH	A	CONTACT LOADING	PART NO.
THIS DRAWING IS A CONTROLLED DOCUMENT.			
DWN C. OBERMAN 04FEB01		TE Connectivity	
CHK R. STONE 10FEB92		RCPT ASSY, 19 POSITION DRAWER CONNECTOR, METRIMATE	
APVD A. TRAVIS 10FEB92		NAME	
PRODUCT SPEC		SIZE CAGE CODE DRAWING NO RESTRICTED TO	
APPLICATION SPEC		A2 00779 C=213738	
MATERIAL		WEIGHT -	
FINISH		SCALE 2:1 SHEET 1 of 1 REV J3	
CUSTOMER DRAWING			